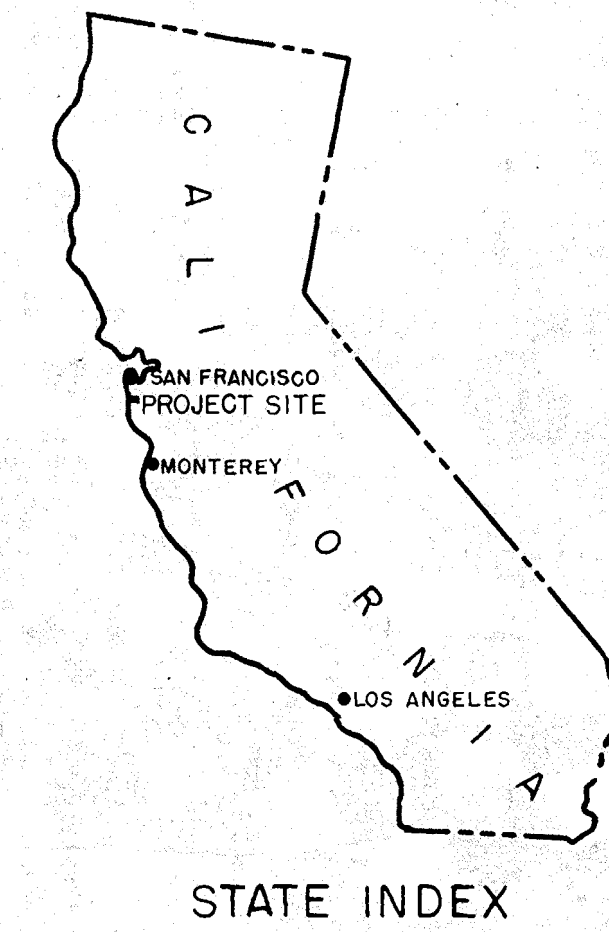


ACQUISITION TRACT REGISTER				
TRACT NO.	LAND OWNER	ACREAGE		REMARKS
		LEASE	LESSER INT'S.	
1	ADELINE MOSCONI .	10.86		Lease W 2972 - Eng.-1170 .
2	VIRGINIA W. PARKER .	9.59		Lease W 2972 - Eng.-1171 .
3	EDWARD HOVIUS and CAROLINE HOVIUS .	1.35		Lease W 2972 - Eng.-1161 .
3-A	EDWARD HOVIUS and CAROLINE HOVIUS .	0.82		Easement Lease W 2972 - Eng.-1161, For Power Line Right of Way .
4	S. H. COWELL, for himself and I. M. COWELL .	0.41		Lease W 2972 - Eng.-1536 .
4-A	S. H. COWELL, for himself and I. M. COWELL .	0.31		Easement Lease W 2972 - Eng.-1536 . For Access Road Right of Way .
5	FRANCIS MARSH and Mrs. CLAUDE PUGH, Formerly LUCILLE MARSH .	0.48		Easement Lease W 2972 - Eng.-1162 . For Access Roadway Right of Way .
5-A	FRANCIS MARSH and Mrs. CLAUDE PUGH, Formerly LUCILLE MARSH .	0.77		Lease W 2972 - Eng.-1162 .
6	OCEAN SHORE RAILROAD CO.		0.03	Unnegotiated Permit .
7	STATE OF CALIFORNIA .		NO AREA	Encroachment Permit No. C-47129 Dated 31 Dec. 43. For Water Pipe Line Right of Way .



(TYPE) FINAL

PROJECT OWNERSHIP MAP

STATE CALIFORNIA

COUNTY SAN MATEO

DIVISION SOUTH PACIFIC

DISTRICT SAN FRANCISCO

SIXTH ARMY AREA

LOCATION OF PROJECT

3 MILES S OF HALF MOON BAY

22 MILES S OF SAN FRANCISCO

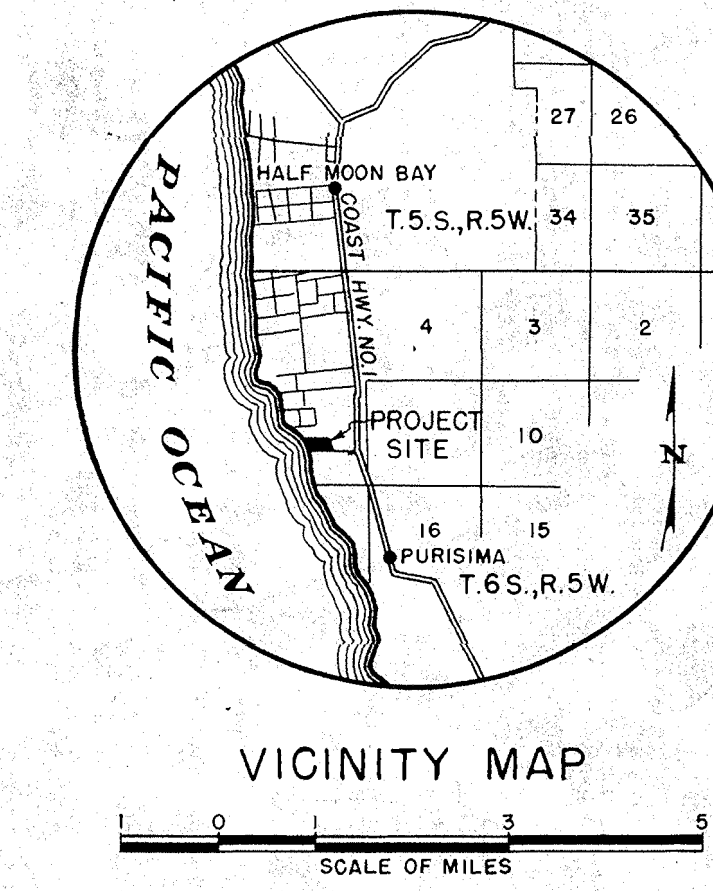
TRANSPORTATION FACILITIES

RAILROADS

STATE ROADS COAST HWY. NO. 1

FEDERAL ROADS

AIRLINES



ACQUISITION

TOTAL ACRES ACQUIRED 24.62

ACRES FEE

ACRES TRANS'F TO WAR DEPT.

ACRES LEASED TO WAR DEPT. 24.59

ACRES LESSER INTERESTS 0.03

DISPOSAL

TOTAL ACRES DISPOSED OF 24.62

ACRES SOLD BY WAR DEPT.

ACRES TRANS'D BY WAR DEPT.

ACRES RETRANS'D TO GOVT. AGCY.

ACRES LEASES TERMINATED 24.59

ACRES LESSER INT'S TERM. 0.03

LEGEND

NOTE: USE SYMBOLS FROM FM-21-30 (WAR DEPT. BASIC FIELD MANUAL) PAGES 21 TO 27 INCL. EXCEPT

RESERVATION LINE

RESERVATION LINE (Actual Survey)

DAM SITE (Taking Line)

RESERVOIR SITE (Taking Line)

CONTOUR LINES 470

AVIGATION EASEMENTS

TRACT NUMBER 99

REVISIONS	DATE	BY
	1st Feb. 49.	J. D. K.
	Due to Final Audit	

ACQUISITION AUTHORIZATION

RE-D 773 Dated 10th. Apr. 1942

CORPS OF ENGINEERS, U.S. ARMY
OFFICE OF THE DIVISION ENGINEER
SOUTH PACIFIC DIVISION

REAL ESTATE

VHF SITE 4K5
(HALF MOON BAY)

DRAWN BY: W. H. K.
TRACED BY: J. D. K.
CHECKED BY: T. W.
SUBMITTED BY: [Signature]

CHIEF, CADASTRAL SEC.
RECOMMENDED BY: [Signature]

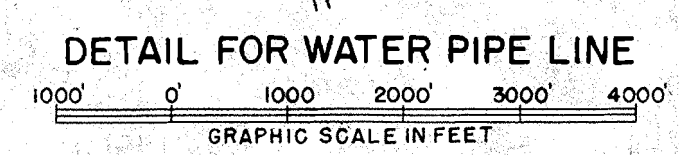
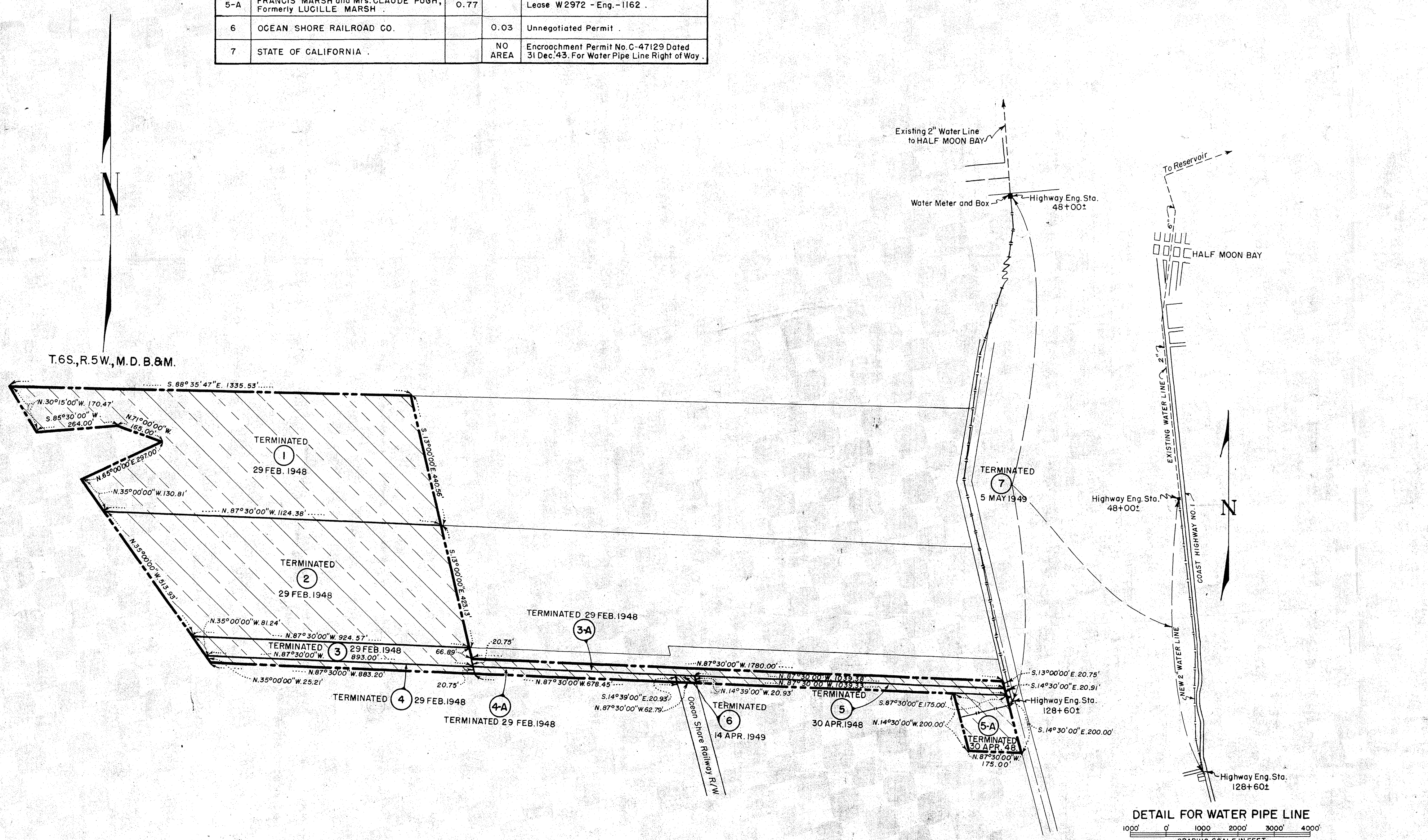
APPROVED BY: [Signature] DATE 16 Feb. 49

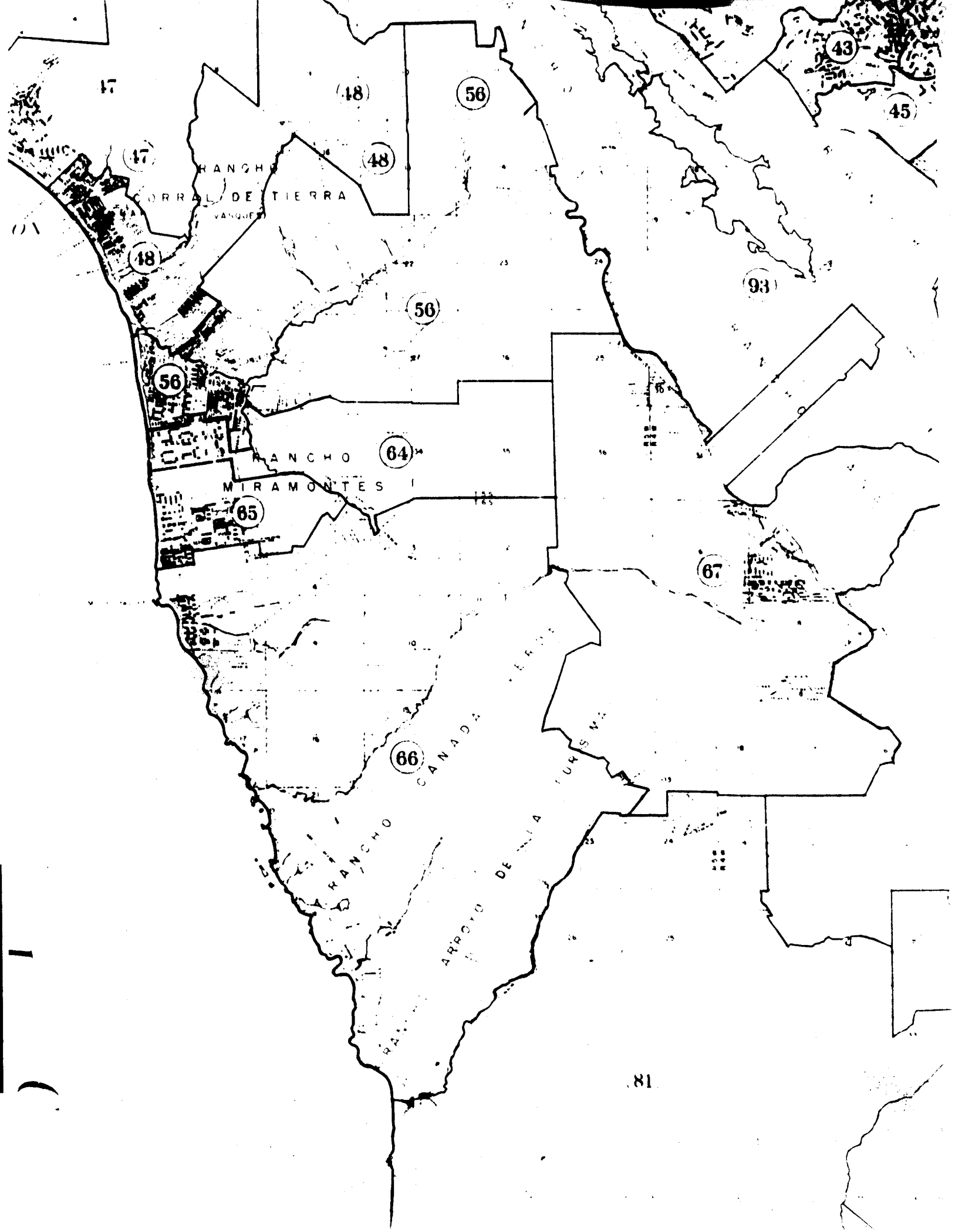
OFFICE, CHIEF OF ENGINEERS, WASHINGTON, D. C.
DIVISION REAL ESTATE OFFICER

AUDITED 2474

SCALE IN FEET 0 200 400

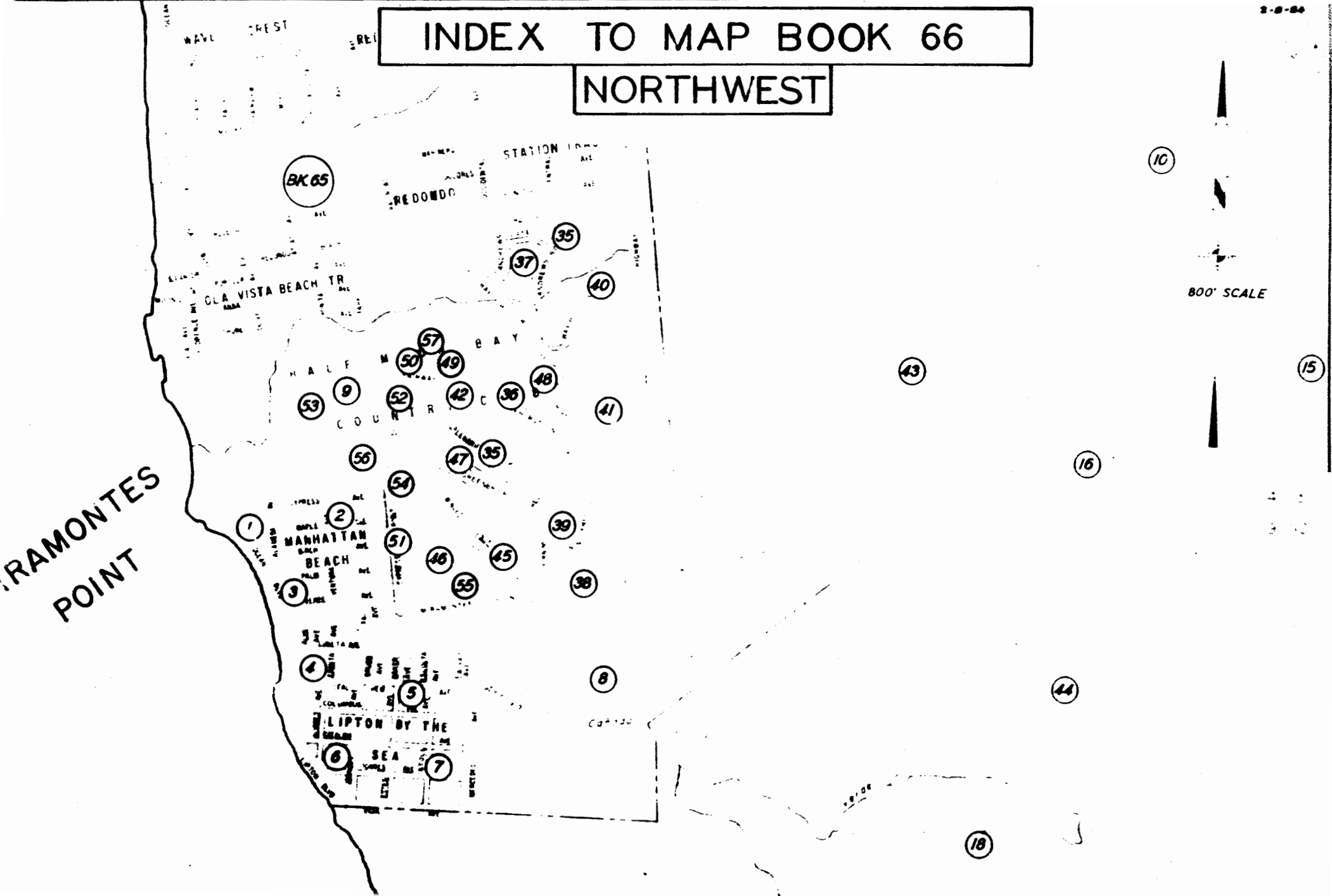
SHEET 1 OF 1 DRAWING NO.





INDEX TO MAP BOOK 66

NORTHWEST



RAMONTE'S
POINT

800' SCALE

10

15

16

44

18

BK 65

REDONDO

STATION

35

37

40

CLAY VISTA BEACH TR

57

50

49

53

9

52

42

48

38

41

HALF MOON BAY

56

47

35

2

54

1

51

3

46

45

55

39

38

4

8

5

6

7

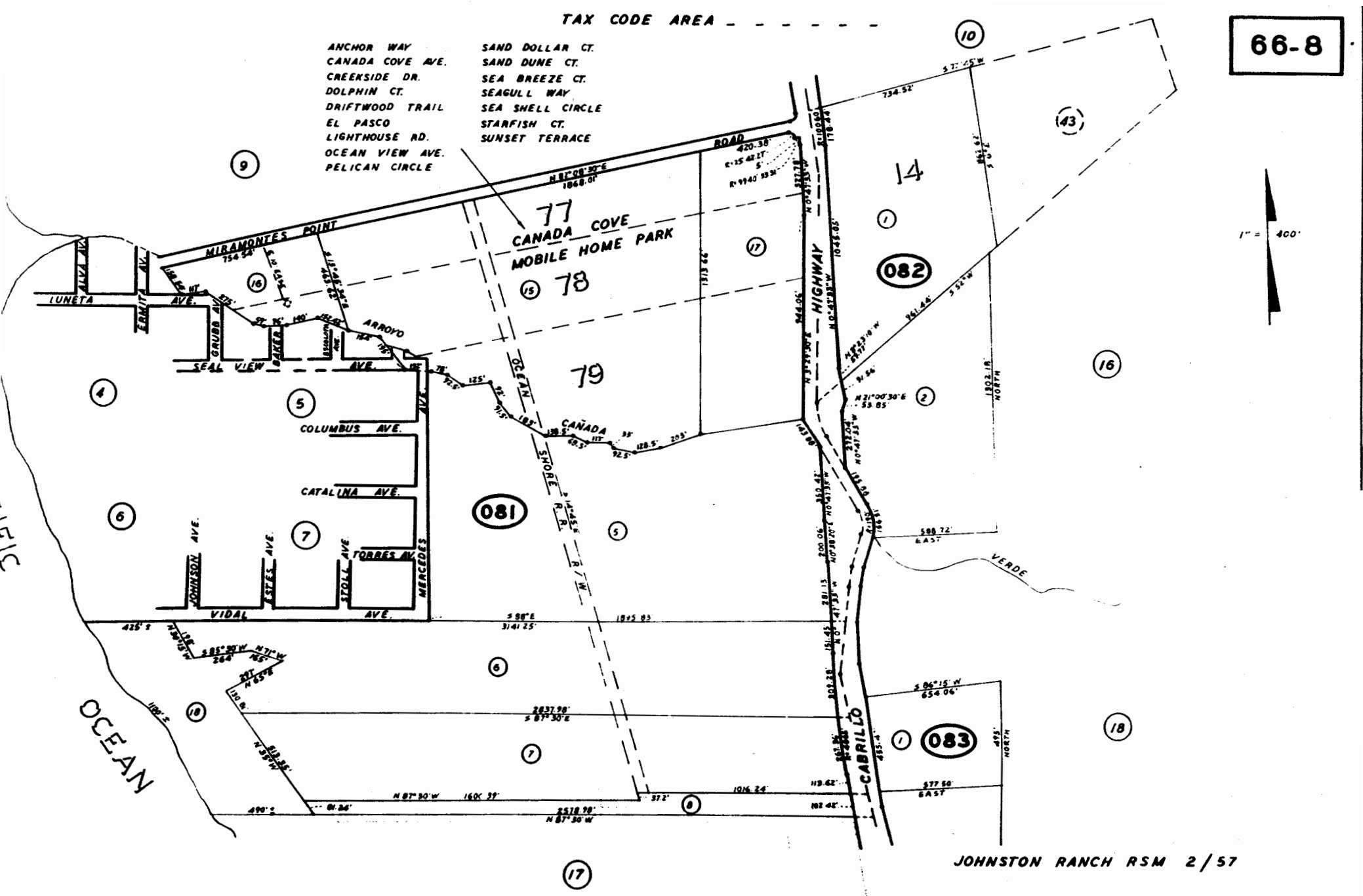
LIPTON BY THE SEA

43

TAX CODE AREA

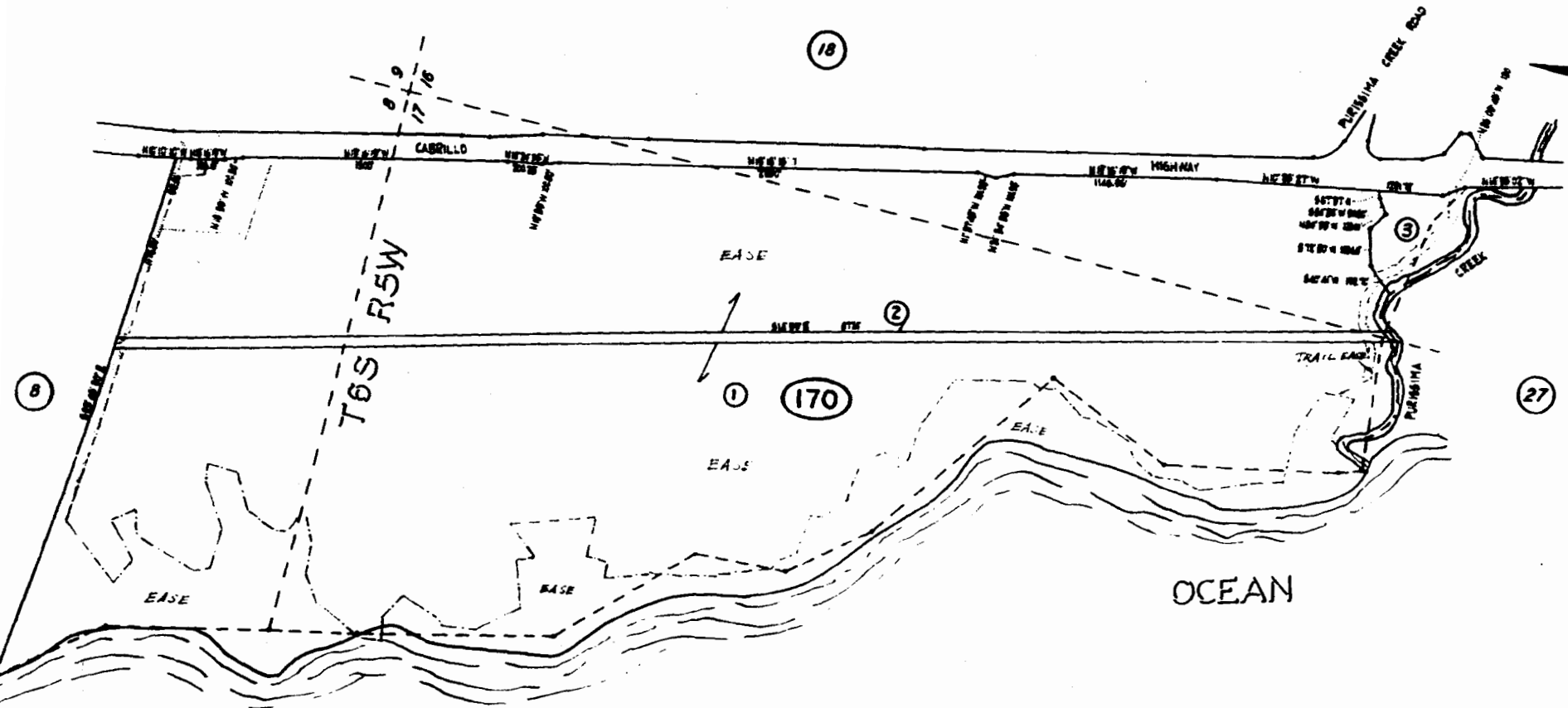
66-8

- | | |
|------------------|------------------|
| ANCHOR WAY | SAND DOLLAR CT. |
| CANADA COVE AVE. | SAND DUNE CT. |
| CREEKSIDE DR. | SEA BREEZE CT. |
| DOLPHIN CT. | SEAGULL WAY |
| DRIFTWOOD TRAIL | SEA SHELL CIRCLE |
| EL PASCO | STARFISH CT. |
| LIGHTHOUSE RD. | SUNSET TERRACE |
| OCEAN VIEW AVE. | |
| PELICAN CIRCLE | |



TAX CODE AREA _____

66-17



PACIFIC