

REPORT OF COMPLETED WORKS -- SEACOAST FORTIFICATIONS
(Gun and Mortar Batteries)

1920

COAST DEFENSES OF SAN FRANCISCO, CAL.
FORT. WINFIELD SCOTT
BATTERY. BALDWIN.
No. of guns TWO Caliber 3-INCH Carriage L. P.

Form 1 Corrected to MARCH 1, 1919

Battery commenced	1901	Source of electric current	Central power plants, two 100-k.w. steam generating sets.
Battery completed	1903		
Date of transfer	Dec. 3, 1903.	Max. kv. required for lights	0.8 k.w.
Material of construction	Concrete.	Max. kw. required for motors	No motors.
Portland or Rosendale cement	Portland.		
Cost to date of transfer	\$11,119.09	Present condition of battery	Good.
Connected to water supply	Yes.	Rooms wet or dry	Dry.
Connected to sewer	Yes.	How ventilated	Natural draft, 3" terra cotta flues, f from magazines, terminating at rear wall over entrance door.
Type of latrine	No latrine.	Remarks-	
Type of data transmission	Telephone.		
Trunnion elevation in battery	70.9		
Datum plane	M.L.L.W.		

ARMAMENT.

Emplacement or mortar No.	Guns or Mortars				Mounted	Carriages					
	Cal.	length	model	Serial No.		Manufacturer	Type	model	Serial No.	Manufacturer	Motor
1	3"	12.8625	1898	73	Driggs-Seabury	Yes.	B.Pil.	1898	73	Driggs-Seabury	None
2	3"	12.8625	1898	74	Gun and Ammunition Co.	Yes.	B.Pil.	1898	74	Gun & Ammunition Company.	required.
3											
4											
5	NOTE: Carriages modified so that guns remain at fixed height in firing position.										
6											
7											
8											

HOISTS.

Emplacement Number	Type	Delivery	Motor					Date of transfer	Remodeled for long points.
			Serial No.	Maker	H.P.	Volts	RPM		
1									
2									
3									
4									

NO HOISTS REQUIRED.

REPORT OF COMPLETED WORKS -- SEACOAST FORTIFICATIONS
(Gun and Mortar Batteries)

COAST DEFENSES OF SAN FRANCISCO, CALIF.
FORT. WINFIELD SCOTT
BATTERY. BALDWIN
No. of guns 0 Caliber 3-INCH Carriage L.F.

Form 1 Corrected to SEPTEMBER 1, 1923.

Battery commenced-----	1901	Source of electric current--- Central Power Plant: Two 100-k.w. steam generating sets.
Battery completed-----	1903	
Date of transfer-----	Dec. 3, 1903.	Max. kv. required for lights- 0.8 k.w.
Material of construction-----	Concrete.	Max. kw. required for motors- No motors.
Portland or Rosendale cement-----	Portland.	Present condition of battery- Good.
Cost to date of transfer-----	\$11,119.89	
Connected to water supply-----	Yes.	Rooms wet or dry----- Dry.
Connected to sewer-----	Yes.	How ventilated----- Natural draft. 6" terra cotta flues from magazines, terminating at rear wall over entrance door.
Type of latrine-----	No latrine.	
Type of data transmission-----	Telephone.	Remarks-
Minimum Elevation int. crest of battery-----	70.27	
Datum plane-----	M.L.L.W.	

ARMAMENT.

Emplacement or mortar No.	Guns or Mortars				Carriages					
	Cal. length	model	Serial No.	Manufacturer	mounted	Type	model	Serial No.	Manufacturer	Motor
1	GUNS REMOVED.					B.Pil.	1898M1	74	Watertown Ars.	None required.
2						B.Pil.	1898M1	73	do.	
3	NOTE: Carriages modified so that guns remain at fixed height in firing position. Carriages disposed of at public sale but not yet dismantled.									
4										
5										
6										
7										
8										

HOISTS.

Emplacement Number	Type	Delivery	Motor					Date of transfer	Remodeled for long points.
			Serial No.	Maker	H.P.	Volts	RPM		
1	NO HOISTS REQUIRED.								
2									
3									
4									

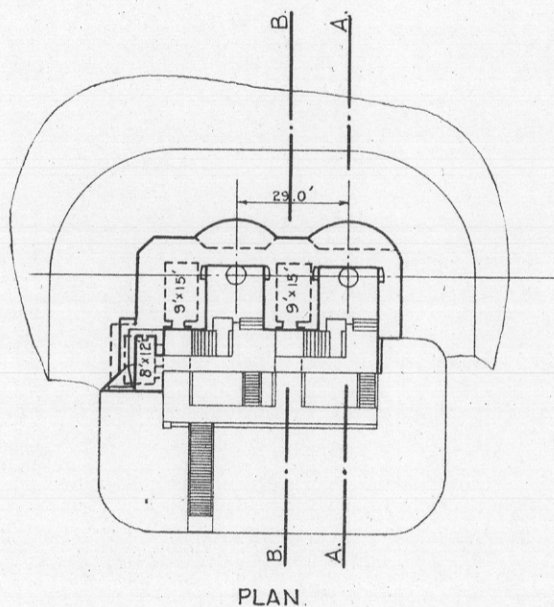
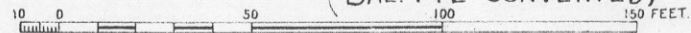
REPORT OF COMPLETED WORKS ~ SEACOAST FORTIFICATIONS
(BATTERY PLAN)

CORRECTED TO AUG. 1923.

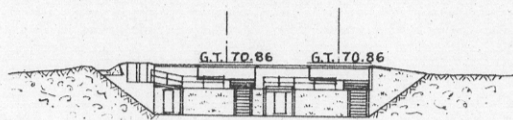
COAST DEFENSES OF SAN FRANCISCO, CAL.
FORT WINFIELD SCOTT
BATTERY BALDWIN

NO. OF GUNS 0 : CALIBER 3^{IN}: BARBETTE CARRIAGES 2
(BAL. P.L. CONVERTED)

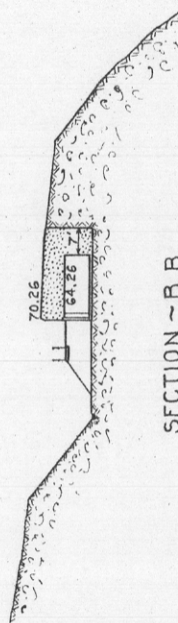
FORM-7



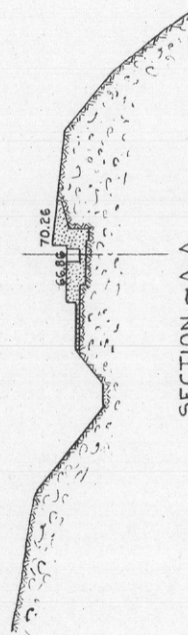
PLAN.



REAR ELEVATION.



SECTION ~ B. B.



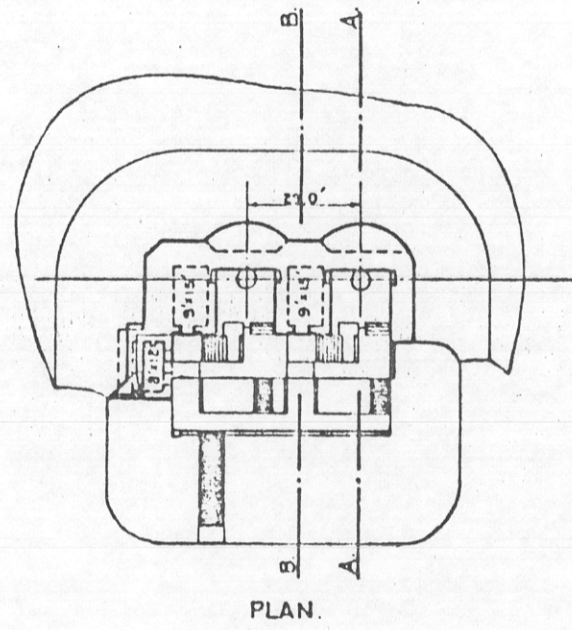
SECTION ~ A. A.

REPORT COMPLETED WORKS - SEACOAST FORTIFICATION
(BATTERY PLAN)

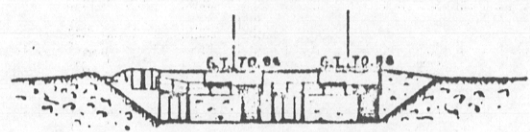
COAST DEFENSES OF SAN FRANCISCO, CAL.
FORT WINFIELD SCOTT
BATTERY BALDWIN
NO. OF GUNS 2: CALIBER 3^{IN}: BARBETTE CARRIAGE

CORRECTED TO DEC. 1919.

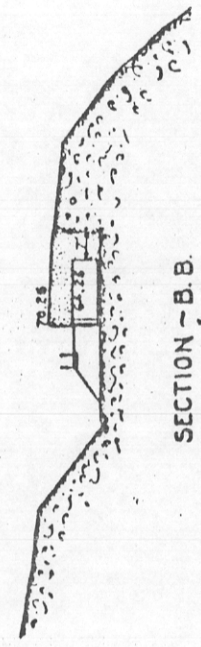
FORM-7



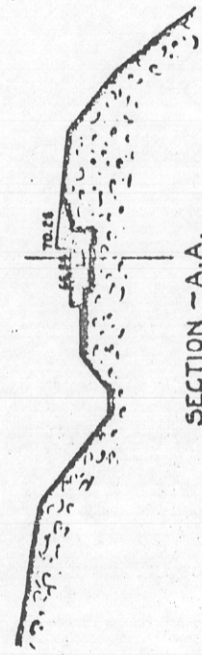
PLAN.



REAR ELEVATION.



SECTION - B.B.



SECTION - A.A.

COAST DEFENSES OF *San Francisco, California*

FORT ^{Winfield} ~~Scott~~. BATTERY *Baldwin* NO. OF GUNS: *2* CALIBER: *3"*

	EMPLACEMENT NUMBER 1.	EMPLACEMENT NUMBER 2.	EMPLACEMENT NUMBER 3.	EMPLACEMENT NUMBER 4.				
1-a. Azimuth. _____	<i>274° 13'</i>	<i>270° 00'</i>						
b. Distance. _____	<i>681</i>	<i>29</i>						
2-a. Model of Gun. _____	<i>Driggs, Seabury 1898 M.I.</i>	<i>Driggs, Seabury 1898 M.I.</i>						
b. " " Carriage _____	<i>Driggs, Seabury 1898</i>	<i>Driggs, Seabury 1898</i>						
c. Type of " _____	<i>B.P.</i>	<i>B.P.</i>						
3- Elevations of. _____								
a. Gun trunnions (in battery) _____	<i>70.86</i>	<i>70.86</i>						
b. Interior crest. _____	<i>70.26</i>	<i>70.27</i>						
c. Loading platform. _____	<i>66.86</i>	<i>66.85</i>						
4- Angle of depression. _____	<i>5° 49½'</i>	<i>5° 49½'</i>						
5- Limiting azimuths of field of fire as determined by: } a. Construction of emplacement. } b. Interference by adjacent emplacements. } c. Interference of other obstacles external to emplacement. } d. Position of Ordnance stops. }	FROM.	TO.	FROM.	TO.	FROM.	TO.	FROM.	TO.
	01	01	01	01	01	01	01	01
	<i>The field of fire of this battery is from 140° 15' to 249° 00'; which field embraces the entire water area into which the battery could fire.</i>							
	<i>No obstacles.</i>							
	<i>No ordnance stops fitted.</i>							

NOTES.

1. Azimuth and distance of emplacement No 2 are given with reference to No.1; of No.3, with reference to No.2, etc. Azimuth and distance of No.1, are given with reference to Battery Point (Latitude - 37° 48' - 304.8 meters. Slaughter (Longitude - 122° 27' - 1068.8 "
3. Above plane of M.L.L.W.
- 5-c. Nature of obstacles: No obstacles.
- 2-c Use one of following abbreviations or designations: Dis; Nondis; Alt. gun-lift; Turret; Casemate; Ped; B.P.