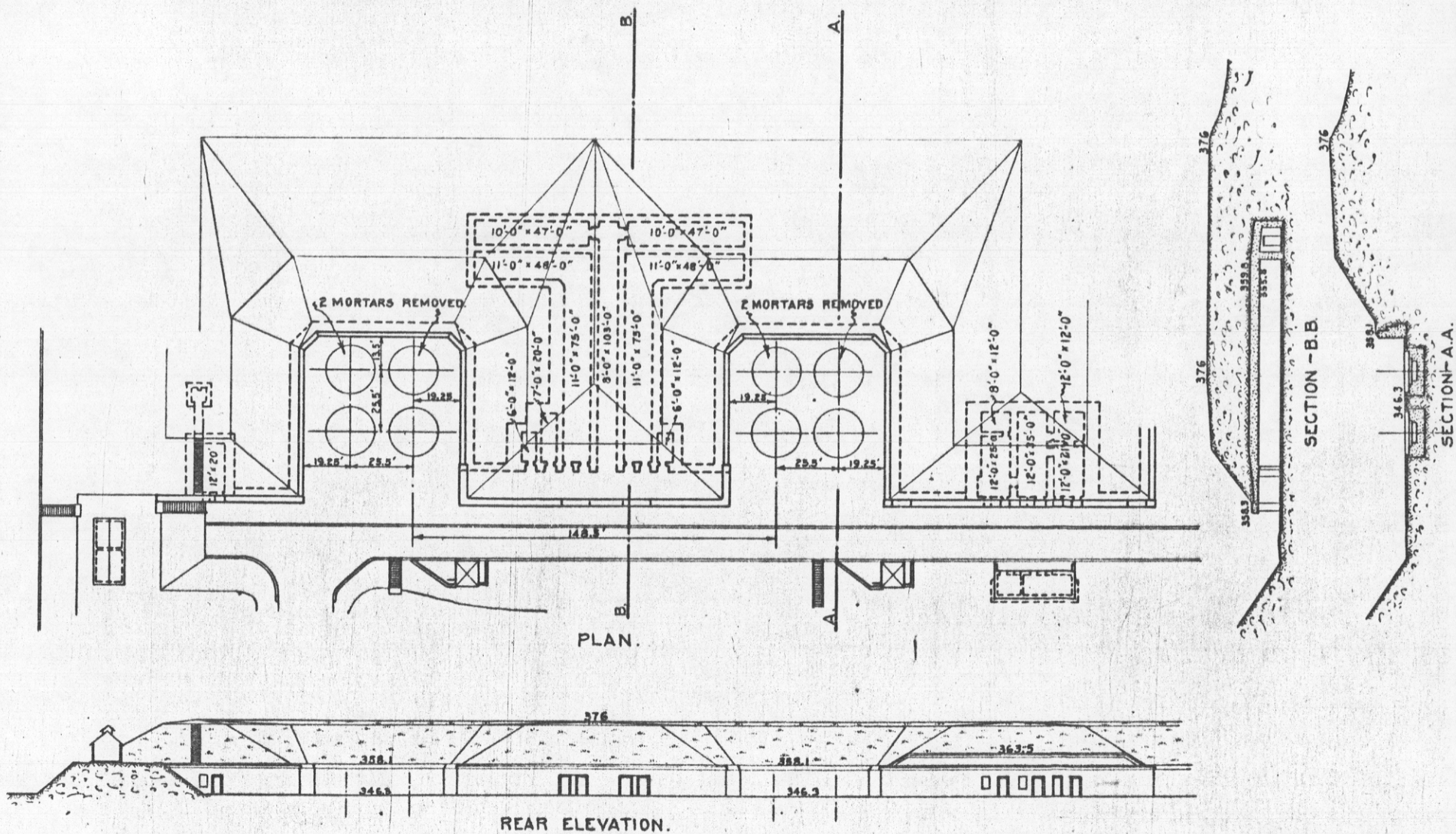


REPORT OF COMPLETED WORKS ~ SEACOAST FORTIFICATIONS
 (BATTERY PLAN)

COAST DEFENSES OF SAN FRANCISCO, CAL.
 FORT MILEY
 BATTERY ANTON SPRINGER
 NO. OF MORTARS 4: CALIBER 12^{IN.}: 8 MORTAR CARRIAGES

CORRECTED TO DEC. 1919.

FORM-7



REPORT OF COMPLETED WORKS -- SEACOAST FORTIFICATIONS
(Gun and Mortar Batteries)

COAST DEFENSES OF... SAN FRANCISCO, CALIF.
FORT... MILEY
BATTERY SPRINGER
No. of ~~guns~~ Mortars FOUR Caliber 12-INCH Carriage Mortars

Form 1 Corrected to SEPTEMBER 1, 1923.

Battery commenced -----	Nov. 27, 1899.	Source of electric current ---	Battery Plant: Two 25-k.w. gas motor sets.
Battery completed -----	1902	Max. kv. required for lights ---	6.5 k.w.
Date of transfer -----	Sept. 26, 1902.	Max. kw. required for motors ---	No motors.
Material of construction -----	Concrete.	Present condition of battery ---	Good.
Portland or Rosendale cement ---	Portland.	Rooms wet or dry -----	Dry.
Cost to date of transfer -----	\$174,050.89*	How ventilated -----	Natural draft. 8" terra cotta flues from magazines, terminating in sewer pipe elbows.
Connected to water supply -----	Yes.	Remarks -----	*Cost of Batteries Springer and Livingston combined.
Connected to sewer -----	Yes.		
Type of latrine -----	Syphon.		
Type of data transmission -----	Telephone.		
Trunnion Elevation in pit battery floor, -----	346.3		
Datum plane -----	M.L.L.W.		

ARMAMENT.

Emplacement or mortar No.	Guns or Mortars						Carriages					
	Cal.	length	model	Serial No.	Manufacturer	mounted	Type	model	Serial No.	Manufacturer	Motor	
1-PIT A 1	12"	11.759'	1890MI	164	Watervliet Ars.	Yes	B.L.	1896MI	290	Watertown Ars.	None required.	
2	2			**								
3	3	12"	11.759'	1890MI	166	do.	Yes	B.L.	1896MI	301	Rarig Eng. Co.	do.
4	4			**								
5-PIT B 1	12"	11.759'	1890MI	163	do.	Yes	B.L.	1896MI	232	Watertown Ars.	do.	
6	2			**								
7	3	12"	11.759'	1890MI	167	do.	Yes	B.L.	1896MI	233	do.	do.
8	4			**								

**MORTARS AND CARRIAGES REMOVED.

HOISTS.

Emplacement Number	Type	Delivery	Motor						Date of transfer	Remodeled for long points.
			Serial No.	Maker	H.P.	Volts	RPM	Type of Control		
1										
2										
3										
4										

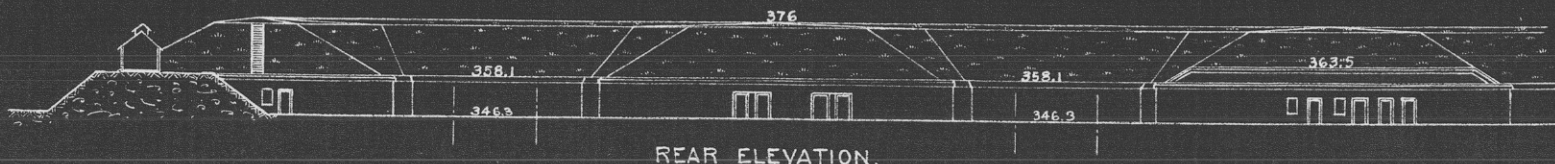
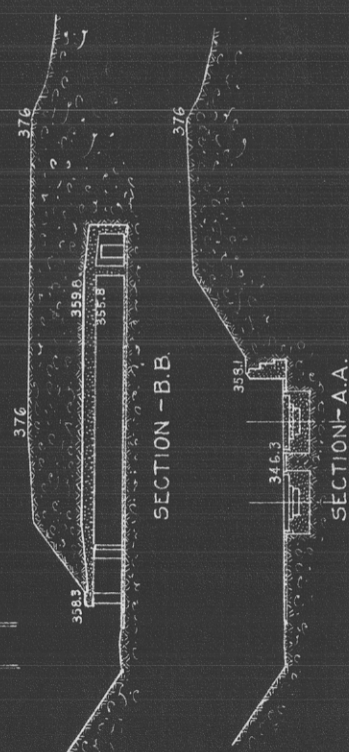
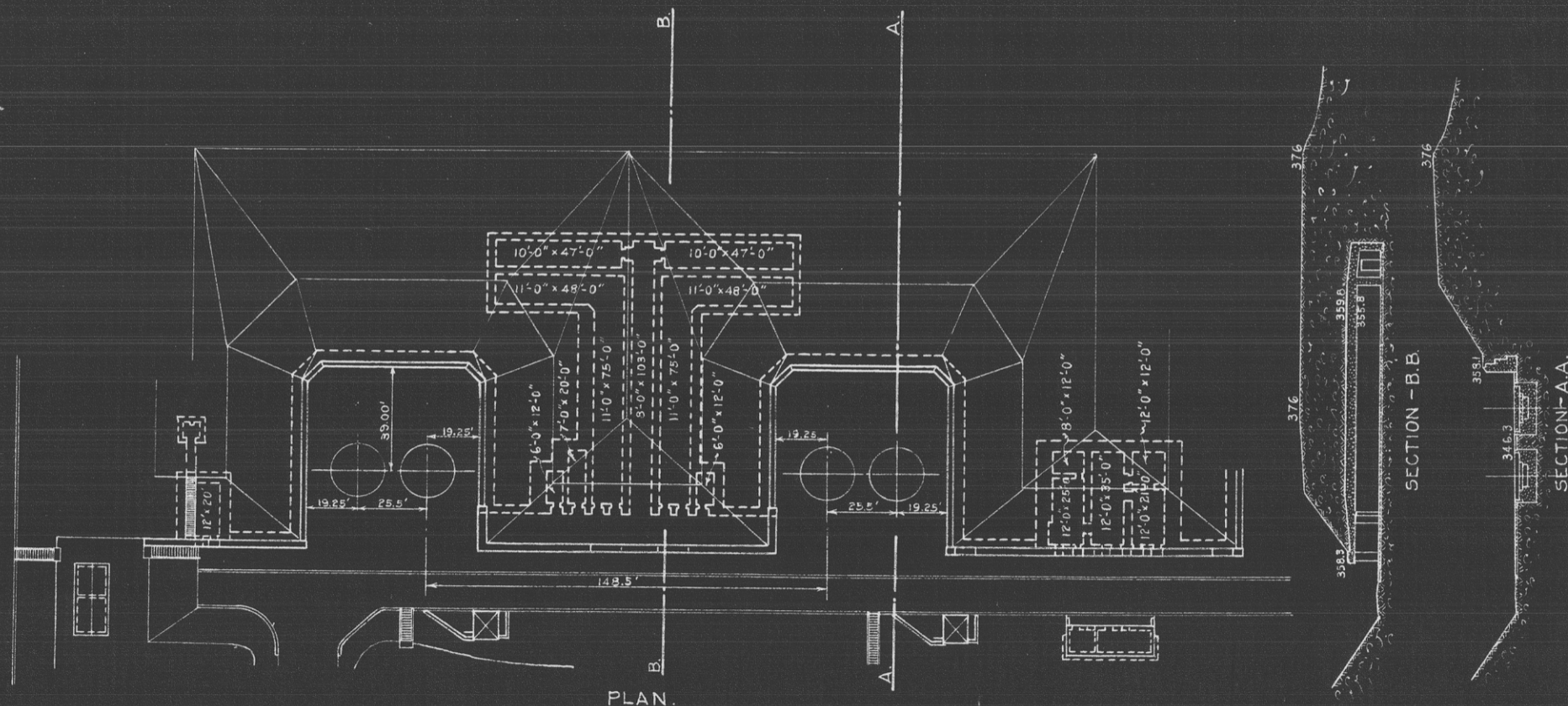
NO HOISTS REQUIRED.

REPORT OF COMPLETED WORKS ~ SEACOAST FORTIFICATIONS
(BATTERY PLAN)

COAST DEFENSES OF SAN FRANCISCO, CAL.
FORT MILEY
BATTERY ANTON SPRINGER
NO. OF MORTARS 4: CALIBER 12" : 4 MORTAR CARRIAGES

CORRECTED TO AUG. 1923.

FORM-7

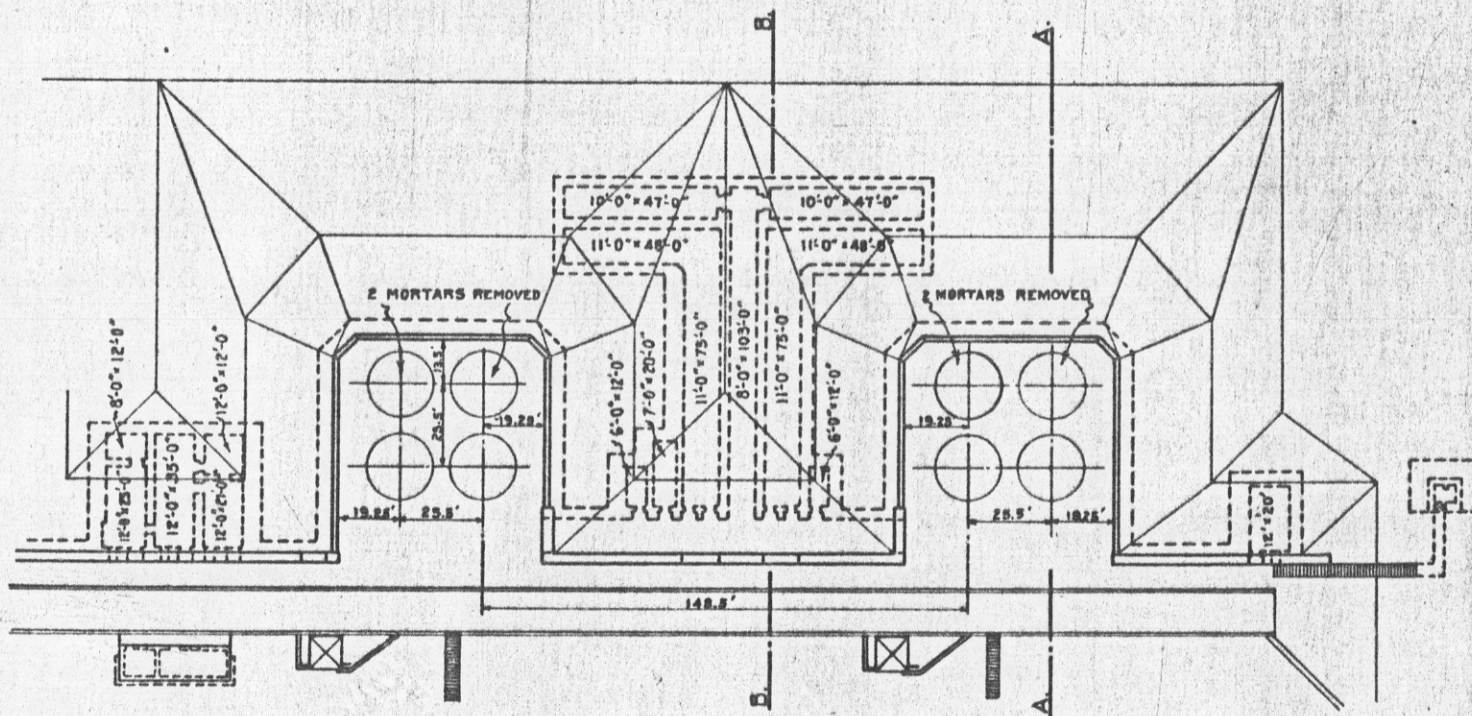


REPORT COMPLETED WORKS - SEACOAST FORTIFICATIONS
 (BATTERY PLAN)

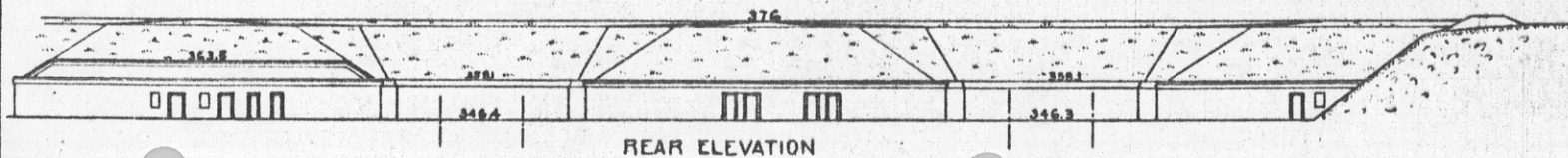
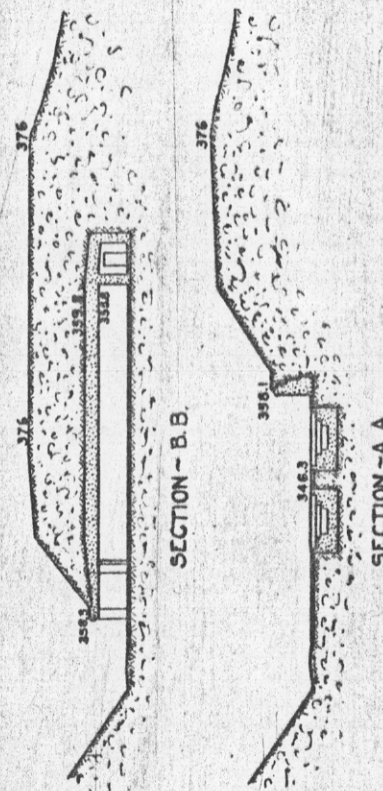
COAST DEFENSES OF SAN FRANCISCO, CAL.
 FORT MILEY
 BATTERY LA RHETT LIVINGSTON
 NO. OF MORTARS 4: CALIBER 12" : 8 MORTAR CARRIAGES

CORRECTED TO DEC. 1919.

FORM-7



PLAN.



REPORT OF COMPLETED WORKS -- SEACOAST FORTIFICATIONS
(Gun and Mortar Batteries)

COAST DEFENSES OF SAN FRANCISCO, CALIF.

FORT. WILEY

BATTERY LIVINGSTON

No. of ~~guns~~ mortars FOUR Caliber 12-INCH Carriage Mortar

Form 1 Corrected to SEPTEMBER 1, 1923.

Battery commenced-----	Mar. 27, 1899.	Source of electric current---	Battery Plant: Two 25-k.w. gas. motor sets.
Battery completed-----	1902.	Max. kv. required for lights---	6.3 k.w.
Date of transfer-----	Sept. 26, 1902.	Max. kw. required for motors---	No motor.
Material of construction-----	Concrete.	Present condition of battery---	Good.
Portland or Rosendale cement-----	Portland.	Rooms wet or dry-----	Dry.
Cost to date of transfer-----	\$174,050.89*	How ventilated-----	Natural draft. 8" terra cotta flues, from magazines, terminating in sewer pipe elbows.
Connected to water supply-----	Yes.	Remarks-----	*Cost of Batteries Livingston and Springer combined.
Connected to sewer-----	Yes.		
Type of latrine-----	Syphon.		
Type of data transmission-----	Telephone.		
Elevation of floor battery of pits-----	346.3		
Datum plane-----	M.L.L.W.		

ARMAMENT.

Emplacement or mortar No.	Guns or Mortars					Carriages						
	Cal.	length	model	Serial No.	Manufacturer	mounted	Type	model	Serial No.	Manufacturer	Motor	
1 PIT A 1	12"	11.759'	1890MI	153	Watertown Ars.	Yes	B.L.	1896Mi	300	Rarig Eng. Co.	None re- quired.	
2	2			**								
3	3	12"	11.759'	1890MI	140	do.	Yes	B.L.	1896Mi	234	Watertown Ars.	do.
4	4			**								
5 PIT B 1	12"	11.759'	1890MI	154	do.	Yes	B.L.	1896Mi	238	do.	do.	
6	2			**								
7	3	12"	11.759'	1890MI	161	do.	Yes	B.L.	1896Mi	235	do.	
8	4			**								

**MORTARS AND CARRIAGES REMOVED.

HOISTS.

Emplacement Number	Type	Delivery	Motor					Date of transfer	Remodeled for long points.
			Serial No.	Maker	H.P.	Volts	RPM		
1									
2									
3									
4									

NO HOISTS REQUIRED.

This btry. not to be used for training & target practice.

Btry. Alexander to be used instead. See 662 B (San. Fran) 224:...

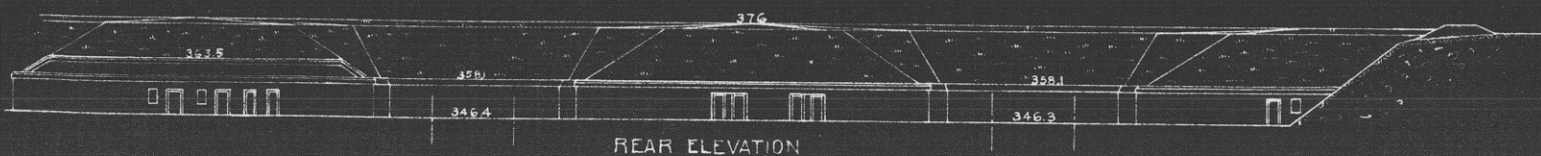
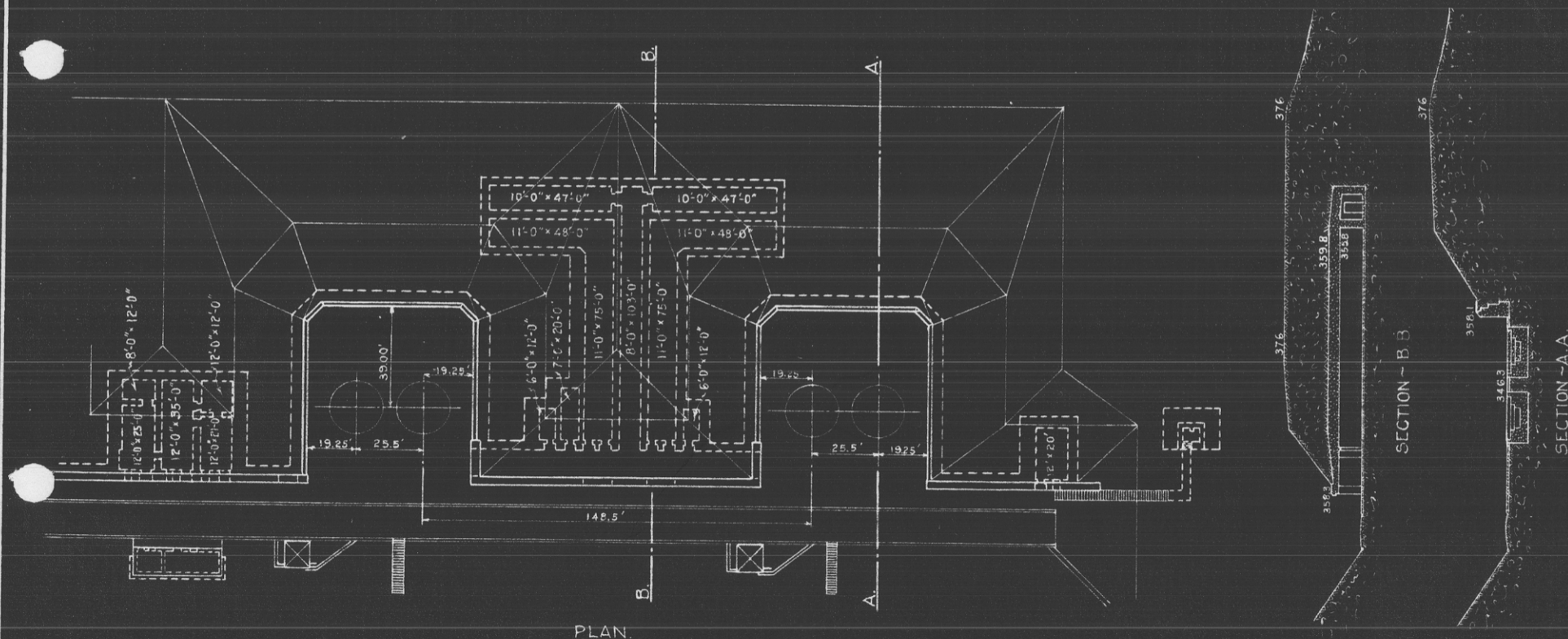
REPORT OF COMPLETED WORKS ~ SEACOAST FORTIFICATIONS
(BATTERY PLAN)

CORRECTED TO AUG. 1923.

COAST DEFENSES OF SAN FRANCISCO, CAL.
FORT MILEY
BATTERY LA RHETT LIVINGSTON
NO. OF MORTARS 4 : CALIBER 12" : 4 MORTAR CARRIAGES

FORM -7

10 0 50 100 150 FEET.

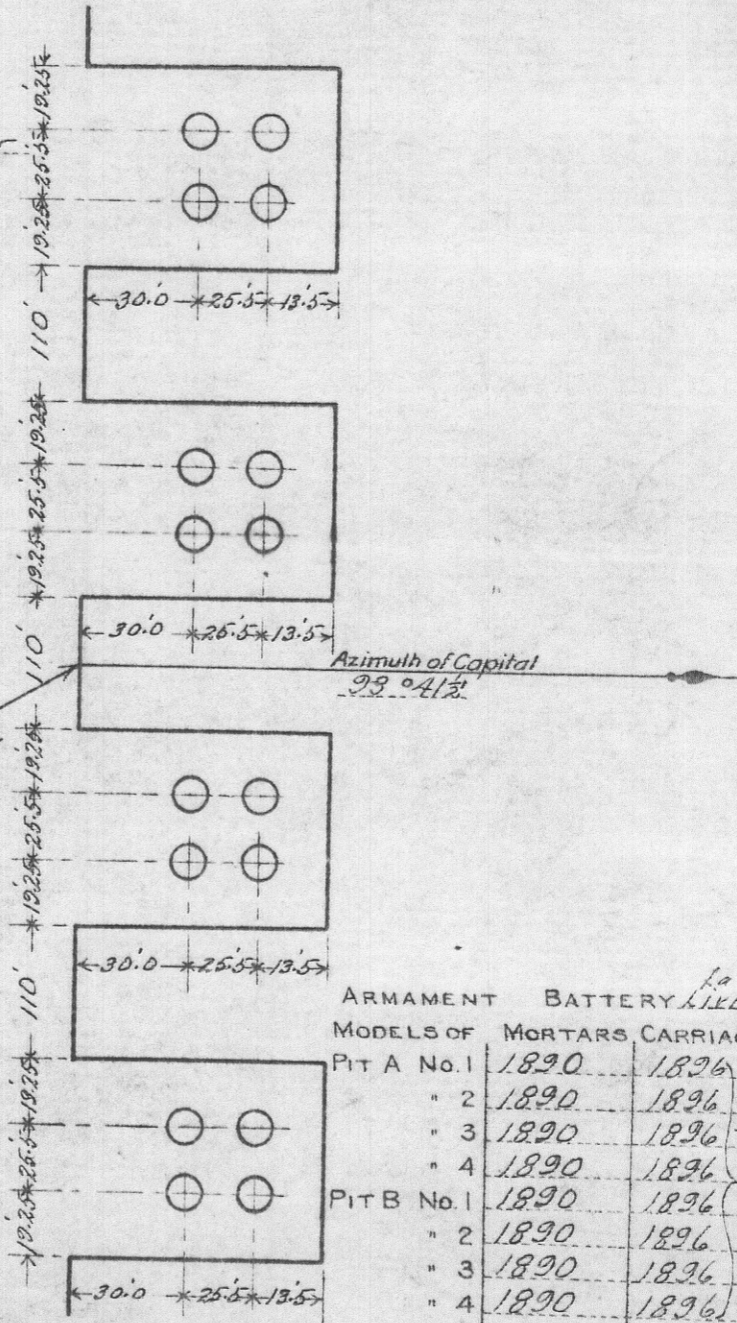


FORT *Miley* *La Rhett Livingston & Anton Springer* BATTERIES 16-12" MORTARS.

ARMAMENT BATTERY *Anton Springer*

MODELS OF MORTARS CARRIAGES		
PIT A No. 1	1890	1896
" 2	1890	1896
" 3	1890	1896
" 4	1890	1896
PIT B No. 1	1890	1896
" 2	1890	1896
" 3	1890	1896
" 4	1890	1896

Converted into Model of 1896 Ml.



Azimuth 272° 09' 2\"
central traverse from "Cement"

Position of "Cement"
 Lat. 37° 46' 1833.1 metres.
 Long. 122° 30' 586.0 "

ARMAMENT BATTERY *La Rhett Livingston*

MODELS OF MORTARS CARRIAGES		
PIT A No. 1	1890	1896
" 2	1890	1896
" 3	1890	1896
" 4	1890	1896
PIT B No. 1	1890	1896
" 2	1890	1896
" 3	1890	1896
" 4	1890	1896

Converted into Model of 1896 Ml.

ELEVATION OF FLOORS OF PITS. *746.3* ABOVE PLANE OF *M.L.L.W.*

REPORT OF COMPLETED WORKS * SEACOAST FORTIFICATIONS
(Electric Plants)

COAST DEFENSES OF SAN FRANCISCO, CAL.

FORT MILEY

POWER FOR BATTERIES LIVINGSTON AND SPRINGER.

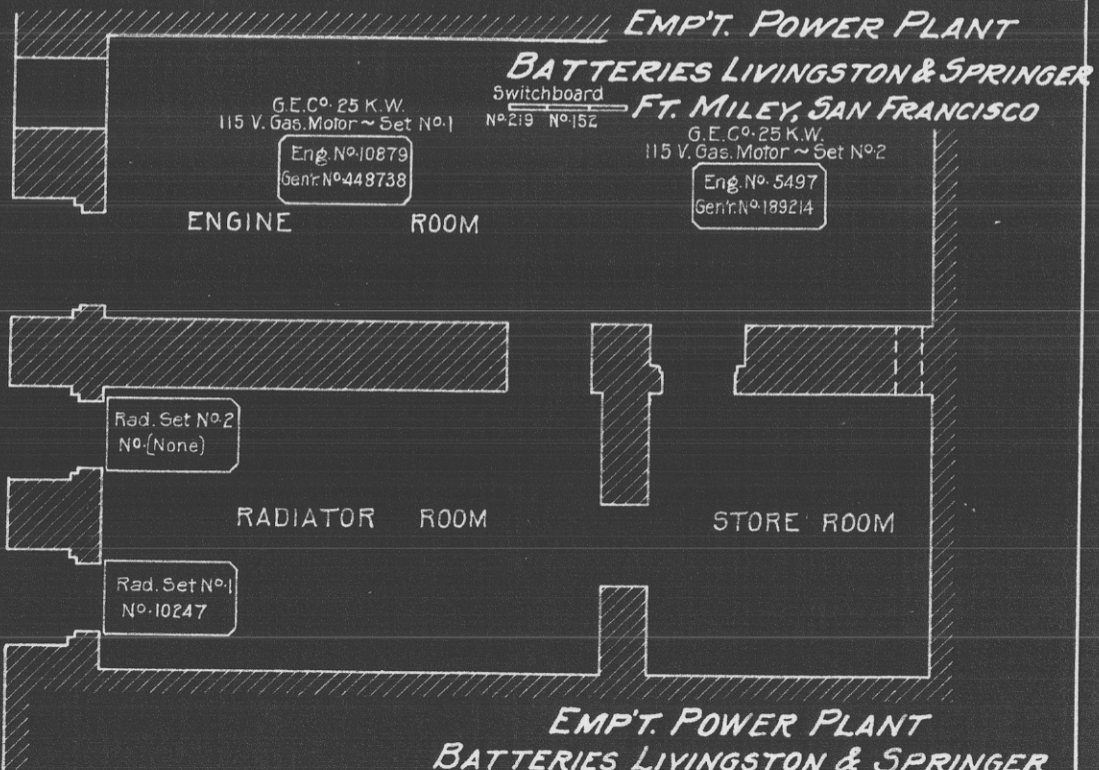
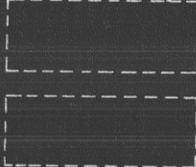
Form 5.

Corrected to OCT.1,1921

	Serial No.	Type	Size	Mfgr.	Date of transfer	Cost	Con- dition	RPM	Belt or Direct Drive	Radiator: for Engine No.	Fuel	Switchboard				
												Material	No. of Panels	Gen. Feed		
Boiler No.1																
No.2																
No.3																
Engine No.1	10879	GM 12	43/54 HP	G.E.Co.	3/21/16	----- \$7,217.54 -----	Good	560	Direct		gasln.		See	675.1	(9th C.A.)	
No.2	5497	do.	do.	do.	9/8/15		do.	do.	do.		do.		Volts	115 DC	2	No
No.3							do.	do.	do.		do.		115 DC	2	No	Used for QM Power
Generator																
No.1	448738	MPC 6	25-k.w.	do.	3/21/16		do.	do.	do.							
No.2	189214	do.	do.	do.	9/8/15		do.	do.	do.							
No.3							do.	do.	do.							
Radiator																
No.1	10247	FF 54		do.	3/21/16		do.	1150	do.		1					
No.2	None			Long-Turney	9/8/15		do.	1050	do.		2					
No.3																
Motor-generator																
No.1																
No.2																
No.3																
Switchboard	219 & 162	M	60"x 82"	Walker Co	(152 9/8/15 3/21/16)		do.						Marble	2	1	
Storage Battery																
Transformer																
No.1																
No.2																
No.3																
Auxiliaries																
No.1																
No.2																
No.3																

DISTRIBUTION OF K.W.	Lights	P	Power	Total
Battery Springer, ---:	7.34	:	.0	: 7.34
Battery Livingston, ---:	7.94	:	.0	: 7.94
Switchboard Room, ---:	.00	:	.5	: .50
TOTAL -----:	15.28	:	.5	: 15.78

370 Gallon
Gasoline Tanks
(Cross Connected)



NOTE:- For details of plant see
Transfer Plan 27-4-5 E.D. 38970/452

EMP'T. POWER PLANT
BATTERIES LIVINGSTON & SPRINGER
FT. MILEY, SAN FRANCISCO
CALIFORNIA

SCALE: $\frac{1}{8}$ IN. = 1 FT.



obsolete

REPORT OF COMPLETED WORKS -- SEACOAST FORTIFICATIONS.
(Fire control or Torpedo Structures)

HARBOR

~~COAST~~ DEFENSES OF SAN FRANCISCO.

FORT... MILEY.....

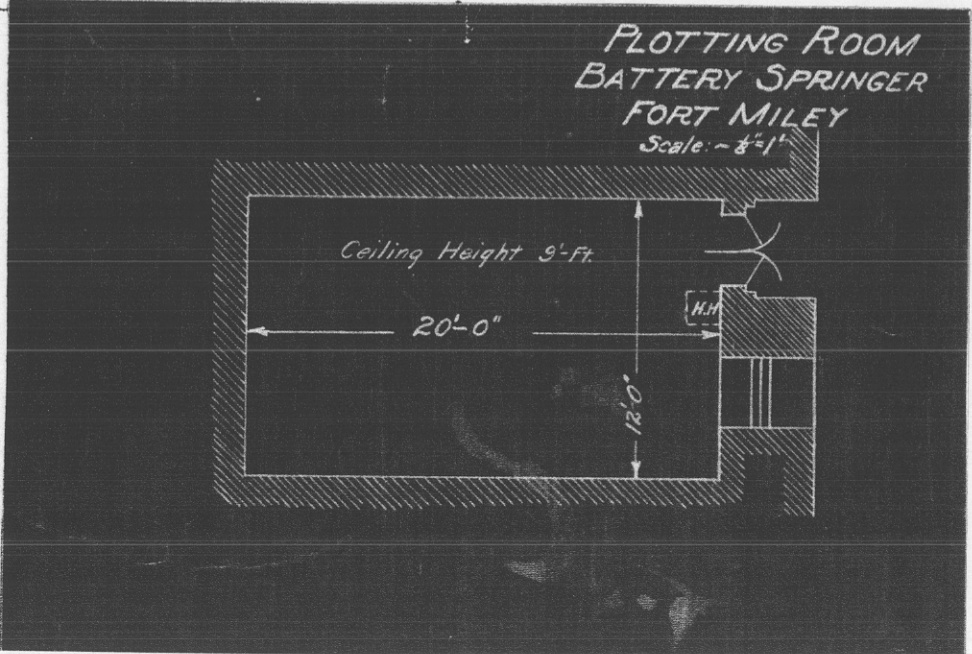
STRUCTURE... PLOTTING ROOM, SPRINGER.....

Form 2.

Corrected to NOV 1 1927

Location	Old relocating room under left traverse of Battery Springer.	Type of data transmission	Telephone.
Date of transfer	Sept. 26, 1902.	Date of transfer)
Cost of remodeling	* \$500.00.	Cost of data transmission equipment)
Type of construction) Installed by Artillery.
(a) Roof	Concrete and earth.	For tide stations give description of tide gauge	:
(b) Remainder of bldg.	Concrete.	For datum points give Forts from which visible	:
How concealed	By earth covering.	For dormitories give stations served	:
How protected	By concrete roof covered with earth.	For cable hut give S.C-Type	:
Heights above concealment	Not above concealment.		:
Heights above protection	Not above protection.		:
Conspicuous at _____ yards	Not visible from sea.		:
Source of electric current	Baty. Livingston and Springer power plant.		:
Kilowatts required	1.4 K.w.		:
Type of lighting fixtures	Indirect light fixtures and arm. cable.		:
How heated	Fire place.		:
Connected to water mains	No.		:
Connected to sewer	Yes.		:
Type of latrine	Battery syphon latrine.		:
Permanent or temporary installation	Permanent.		:
Present condition	Good.		:
Reference of site	380. M.L.L.W.		:
Reference of floor level	349.0' M.L.L.W.		:
axis			:
Type of observing inst.			:
Type of plotting board	110° Model 1915		:
Type and capacity of crane			:
Max. dimensions of reel handled			:

* Cost of building included with battery construction.



obsolete

REPORT OF COMPLETED WORKS -- SEACOAST FORTIFICATIONS.
(Fire control or Torpedo Structures)

HARBOR DEFENSES OF SAN FRANCISCO.
FORT... MILEY.....
STRUCTURE... F. G. SWITCHBOARD ROOM.....

Form 2. Corrected to NOV 1 1927

Location: Center traverse between Pits B Livingston and Springer.

Date of transfer: With Baty. Sept. 26, 1902*

Cost: ~~xxxxxxx~~ of remodeling \$1,000.00**

Type of construction:

(a) Roof: Concrete.

(b) Remainder of bldg.: Concrete.

How concealed: Earth parapet.

How protected: Earth and concrete.

Heights above concealment: Not above concealment.

Heights above protection: Not above protection.

Conspicuous at _____ yards: Not conspicuous from sea.

Source of electric current: Livingston & Springer Battery plant.

Kilowatts required: 1.k.w.

Type of lighting fixtures: W. T. fix. & arm. cable.

How heated: Arranged for stove.

Connected to water mains: No.

Connected to sewer: Yes.

Type of latrine: Syphon (Battery latrine).

Permanent or temporary installation: Permanent.

Present condition: Good.

Reference of site: 380.0 M.L.L.W.

Reference of ~~xxxxxxx~~ floor level: 349.0 M.L.L.W.

Type of observing inst.:

Type of plotting board:

Type and capacity of crane:

Max. dimensions of reel handled:

Type of data transmission: Telephone.

Date of transfer:)

Cost of data transmission:)

equipment: Installed by Artillery.

For tide stations give description of tide gauge:

For datum points give Forts from which visible:

For dormitories give stations served:

For cable hut give S.C. Type: *Remodeled 1916.

**Engineer work, only: Cost of room included in cost of Battery Livingston and Battery Springer.

