

**SUPPLEMENTAL SITE SURVEY SUMMARY SHEET
FOR
DERP-FUDS PROPERTY NO. J09CA076900
CAMP McQUAIDE MILITARY RESERVATION**

SITE NAME: Camp McQuaide Military Reservation

LOCATION: Camp McQuaide is located in California on the central coast at Monterey Bay in Santa Cruz County, six miles west of the City of Watsonville (Figure 1 and 2).

SITE HISTORY: During 1942, the War Department acquired 407.80 fee acres, 380.50 leased acres, and 244.00 permit acres from private individuals. Total acreage acquired was 1032.30. The site was used as a coast artillery training center (the Coast Artillery Seacoast Replacement Training Center). Later, the property was used for a disciplinary barracks, housing prisoners and guards. The improvements were constructed between 1941 and 1942, and includes permanent buildings, 354 tents, roads and utilities distribution systems. In 1946, 380.50 leased acres and 244.00 permit acres were terminated. In 1947, the War Assets Administration assumed accountability for 407.80 acres, in which 300.00 acres were quitclaimed to the Central California conference Association of Seventh Day Adventist. The Association is now using the site for the Monterey Bay Academy, a boarding school with a work-study program, for high school age students. General Administration Services appears to have transferred the remaining leased acres to the Federal Aviation Administration sometime after 21 May 1981.

SITE VISIT: On 22 January 1991, Mr. Roger Norris and Mr. Michael Kingsley of the Earth Technology Corporation visited the site, Camp McQuaide. At the Monterey Bay Academy, Mr. Steve Barnes, Business Manager, and Mr. Robert Wisdom, Plant Manager, provided maps and a guided tour of the Academy grounds. Mr. Wisdom identified the DOD built structures indicated on Figure 3. All of the DOD built buildings remaining on the campus are still in use. This includes two munitions-storage bunkers. Two foundations for coastal defense guns remain near the beach. DOD installed underground storage tanks (USTs) remain in four locations (Figure 3). The DoD storage tanks were removed by the Sacramento District following the approval of the initial Preliminary Assessment. No further Department of Defense Actions are recommended for initiation under the FUDS CON/HTRW program.

The outlying areas of the military reservation include Sakae Nurseries on the North, the cultivated fields of Bonadelli Farm on the South, and Sunset State Beach with adjoining inland area. Sakae Nurseries denied entry to their property. Lisa Sakae and her sister had no knowledge of any DOD remnants and were not aware that the land was once part of Camp McQuaide. Bonadelli Farm, Sunset State Beach (and coastal dune plant preserve and revegetation area), and the adjoining inland area have no identifiable DOD Remnants.

DERP-FUDS PROPERTY NO. J09CA076900
CAMP McQUAIDE MILITARY RESERVATION

Because Camp McQuaide was used as a coast artillery training center, possibility existed that there are chemical burial site(s) located at Camp McQuaide. The St. Louis District performed a records search and found that chemical warfare material was never used or stored at the site. Therefore, the previously proposed OE project recommendation is deleted. A RAC is enclosed.

In the process of attempting to obtain site closure for the UST sites, the California Regional Water Quality Control Board and DTSC requested an additional preliminary assessment shall be conducted. The preliminary assessment, draft dated September 1997, found that intrusive sampling may be warranted at the former vehicle wash rack, incinerator and at suspected landfill site. The Preliminary Assessment records search indicates an area where waste was spoiled; however, it is not clear whether the area actually served as the post landfill site.

CATEGORY OF HAZARD: CON/HTRW, HTRW

PROJECT DESCRIPTION: The proposed HTRW project consists of soil and ground water sampling at the former vehicle wash rack, incinerator, and at the suspected landfill site.

The CON/HTRW removal project is complete.

AVAILABLE STUDIES AND REPORTS:

1. California Interim Survey and Analysis Report, U.S. Army Chemical Material Destruction Agency, 1995.
2. Environmental Resources Branch, Sacramento District, Environmental Evaluation, Camp McQuaide, Santa Cruz County, CA, U.S. Army Corps of Engineers, September 1994

PA POC: Mr. Gerald Vincent, CESP-K-PM-H, U.S. Army Corps of Engineers, Sacramento District, (916) 557-7452.

DEFENSE ENVIRONMENTAL RESTORATION PROGRAM
FORMERLY USED DEFENSE SITES

FINDINGS AND DETERMINATION OF ELIGIBILITY

CAMP McQUAIDE
SANTA CRUZ COUNTY, CALIFORNIA
SITE NO. J09CA076900

FINDINGS OF FACT

1. During 1942, the War Department acquired 407.80 fee acres, 380.50 leased acres, and 244.00 permit acres from private individuals. Total acreage acquired was 1,032.30.
2. The site was known as Camp McQuaide Military Reservation, California. It is located 6 miles west of Watsonville in Santa Cruz County. The site was used as a coast artillery training center (the Coast Artillery Seacoast Replacement Training Center). Later the property was used for a disciplinary barracks, housing prisoners and guards. The improvements were constructed between 1941 and 1942, and included three permanent buildings, 354 tents, roads, and utilities distribution systems.
3. In 1946, 380.50 leased acres and 244.00 permit acres were terminated. In 1947, the War Assets Administration assumed accountability for 407.80 acres, in which 300.00 acres were quitclaimed to the Central California Conference Association of Seventh Day Adventists. The Association is using the site for educational purposes. There is no indication if restoration was required, but the United States Government does have recapture rights to the site. It appears that General Administration Services transferred the remaining leased acres to the Federal Aviation Administration some time after 21 May 1981.

DETERMINATION

Based on the foregoing findings of fact, the site has been determined to be formerly used by the DOD. Therefore, it is eligible for the Defense Environmental Restoration Program for Formerly Used Defense Sites, established under 10 U.S.C. 2701 et seq.

2 Dec '91
Date

Mark W. Potter, COL, USA
for
Roger F. Yankoupe
Brigadier General, U.S. Army
Commanding

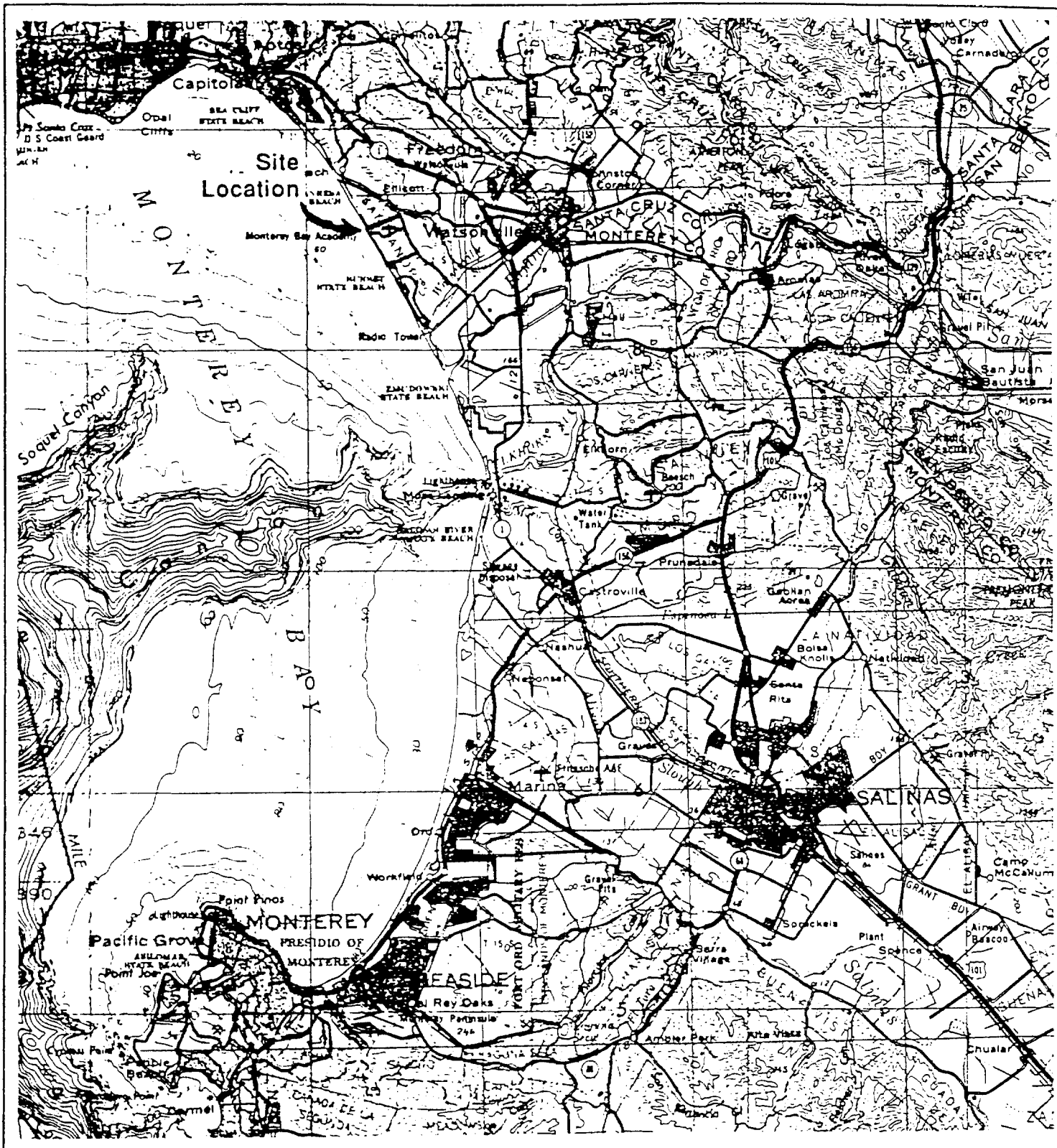
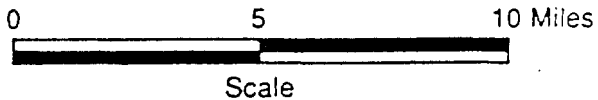


Figure 1
Location Map

Camp McQuaide

Site No. J09CA076900



Scale



North

Source: Base map from U. S. G. S. 1:250,000
Monterey Quadrangle.

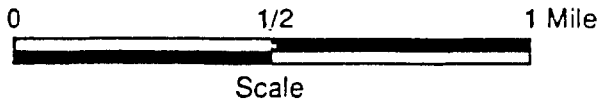
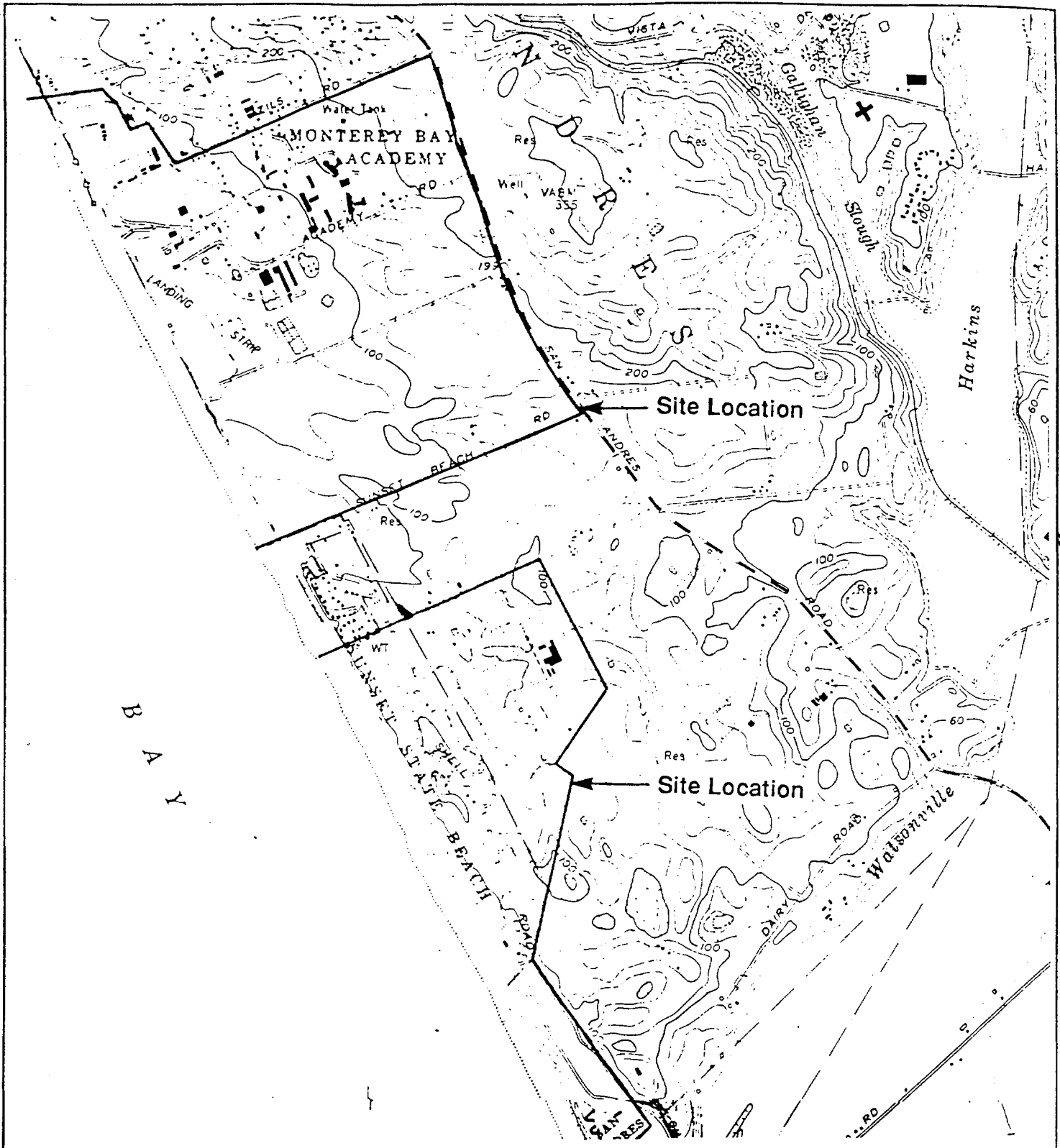


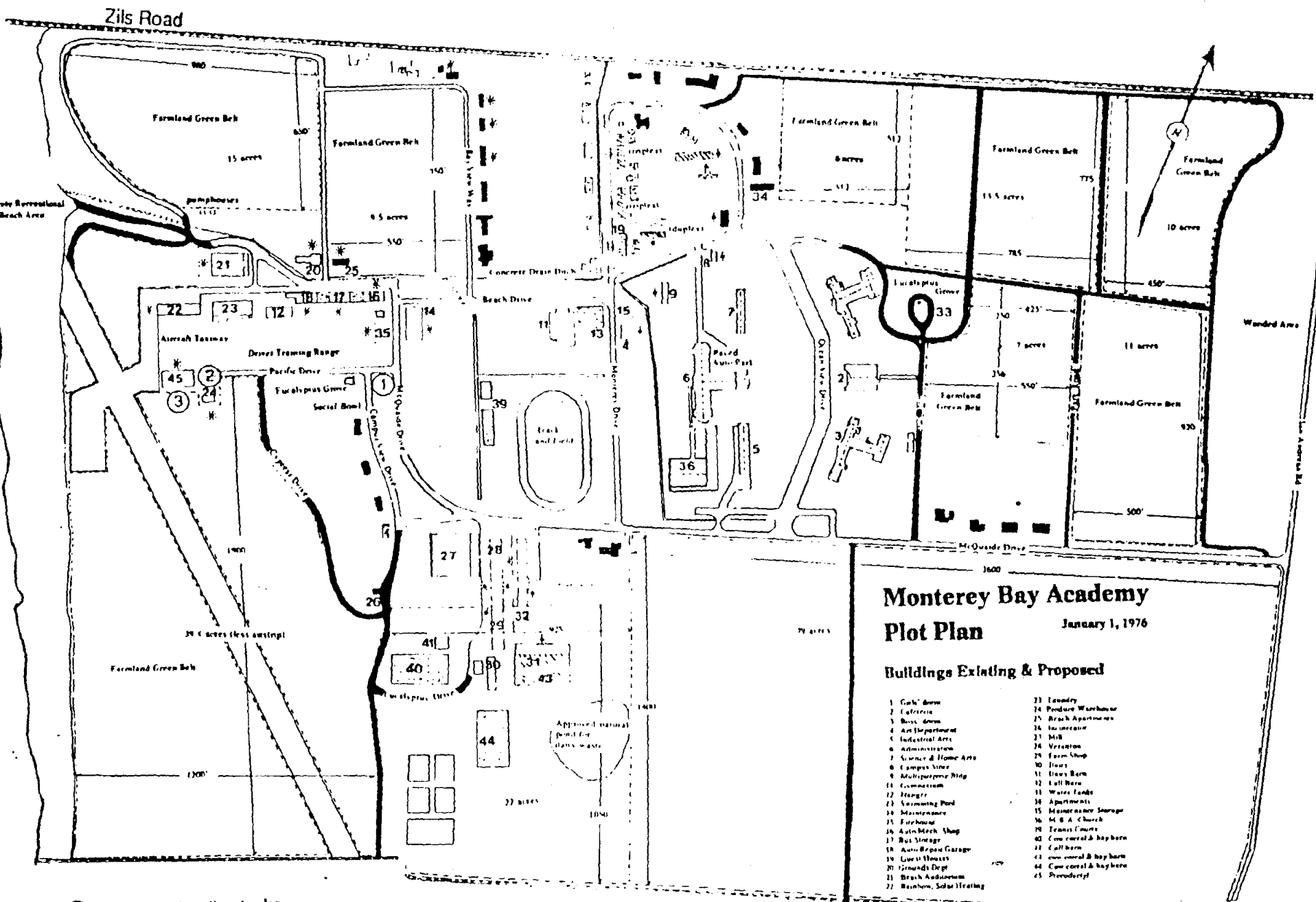
Figure 2
Site Map

Camp McQuaide

Site No. J09CA076900

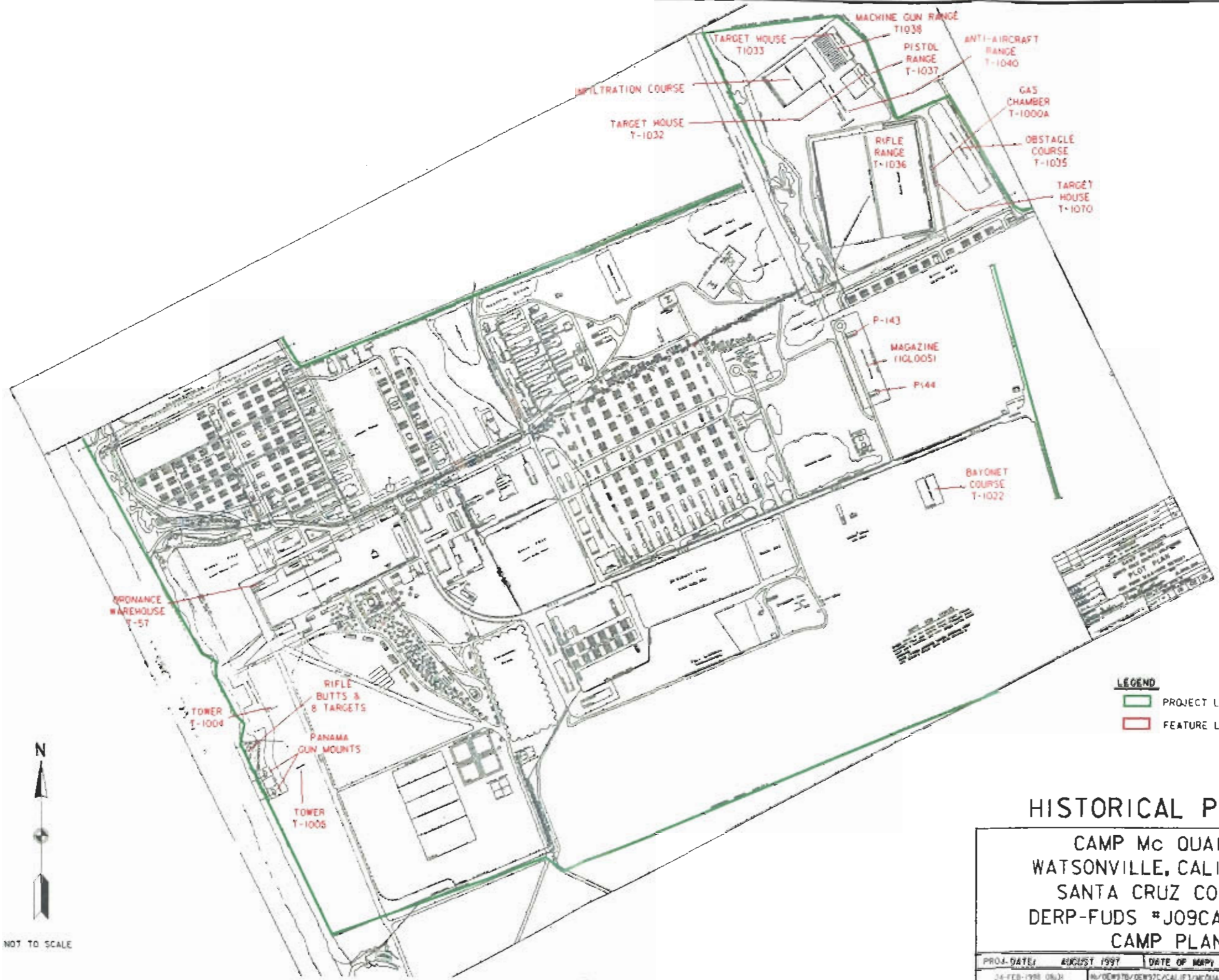


Source: Base map from U. S. G. S. 1:24,000
Watsonville West & Moss Landing
Quadrangles.



- ① Five 2,000-gallon tanks
- ② One 10,000-gallon tank
- ③ One 500-gallon tank
- + DoD built structures

Figure 3



LEGEND
 [Green Line] PROJECT LOCATION
 [Red Line] FEATURE LOCATION

HISTORICAL PLATE

CAMP McQUAIDE
 WATSONVILLE, CALIFORNIA
 SANTA CRUZ COUNTY
 DERP-FUDS #J09CA076900
 CAMP PLAN

PROJ. DATE: AUGUST 1997 DATE OF MAP: 1947
 24-FEB-1998 08:31 \\G09378\DERP\CALIF\J09CA076900\MAP\PLANK.DGN 8 51

N
 NOT TO SCALE



© 1995 DeLorme, Street Atlas USA



LEGEND
 SITE LOCATION

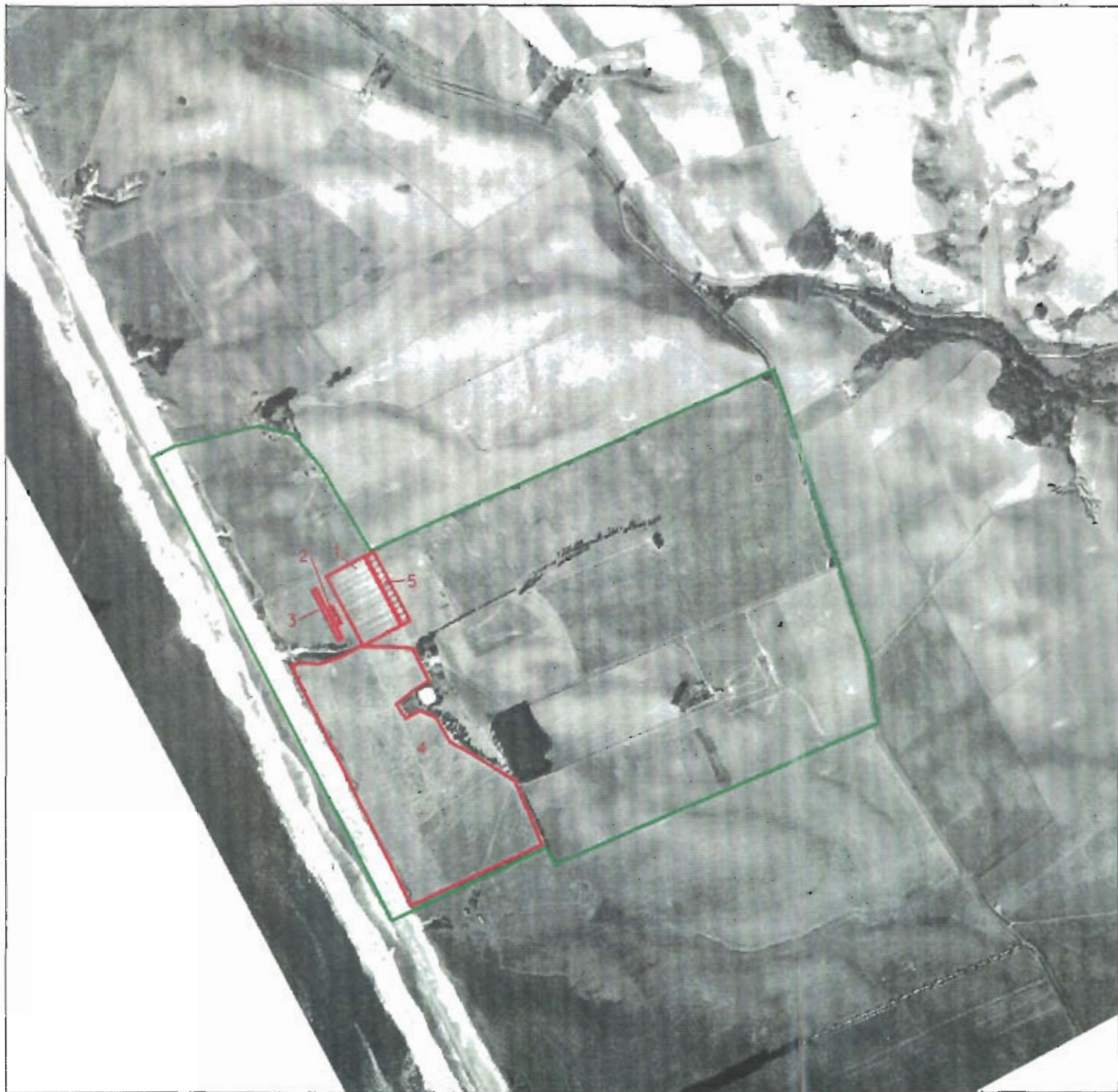


NOT TO SCALE

PLATE I

**CAMP Mc OUAIDE
 WATSONVILLE, CALIFORNIA
 SANTA CRUZ COUNTY
 DERP-FUDS #J09CA076900
 VICINITY MAP**

PROJ. DATE:	AUGUST 1997	DATE OF MAP:	1995
14 OCT 1997 09:40	N:\WORK\BTE\GEA\VC\TA\1\3\WQ\WAIDE\MAP\MCOUVIDE.DWG & .EXT		



FEATURE NO.	FEATURE DESCRIPTION
1.	CAMP AREA (TENTS)
2.	3 LARGE BUILDINGS
3.	4 MOUNDS OF DIRT, POSSIBLE BERMS
4.	NUMEROUS TRACKS
5.	12 LARGE BUILDINGS

LEGEND

-  PROJECT LOCATION
-  FEATURE LOCATION



NOT TO SCALE

PLATE 2

CAMP Mc QUAIDE
WATSONVILLE, CALIFORNIA
SANTA CRUZ COUNTY
DERP-FUDS #J09CA076900
AERIAL PHOTOGRAPH 1939



FEATURE NO.	FEATURE DESCRIPTION
1.	FORMER CAMP AREA, NOW PERMANENT HOUSING
2.	3 LARGE BUILDINGS HAVE BEEN RAZED
3.	FORMER MOUNDS OF DIRT HAVE BEEN RAZED
4.	AREA OF NUMEROUS TRACKS HAS BEEN LEVELED
6.	MAGAZINE AREA
7.	DRILL FIELD 700' Lx400' W
8.	AREA OF DISTURBED SOIL 175' Lx50' W

NOTE: FEATURE NUMBERS NOT LISTED INDICATE NO CHANGE FROM PREVIOUS PLATE OR FEATURE IS NO LONGER VISIBLE

LEGEND

- PROJECT LOCATION
- FEATURE LOCATION



PLATE 3

CAMP Mc OUAIDE
 WATSONVILLE, CALIFORNIA
 SANTA CRUZ COUNTY
 DERP-FUDS #J09CA076900
 AERIAL PHOTOGRAPH - 1940

NOT TO SCALE

PROJ. DATE: AUGUST 1997	DATE OF PHOTO: 1940
13-OCT-1997 14:08	9/10/97/CE/RE/ALIF/S/MBL/AGE/PHOTO/MDR/DEN 6 071



FEATURE NO.	FEATURE DESCRIPTION
1.	ALL HOUSING HAS BEEN RAZED
5.	12 LARGE BUILDINGS HAVE BEEN RAZED
7.	DRILL FIELD IS NOW USED FOR BUILDINGS
8.	AREA OF DISTURBED SOIL IS GONE
9.	BERMS
10.	GUN MOUNTS
11.	RIFLE BUTT
12.	ORDNANCE WAREHOUSE
13.	AREA OF RIFLE RANGE, MG RANGE, GAS CHAMBER, ANTI-AIRCRAFT RANGE, PISTOL RANGE, TARGET HOUSE, OBSTACLE COURSE, INFILTRATION COURSE

NOTE: FEATURE NUMBERS NOT LISTED INDICATE NO CHANGE FROM PREVIOUS PLATE OR FEATURE IS NO LONGER VISIBLE

LEGEND

- PROJECT LOCATION
- FEATURE LOCATION

N



NOT TO SCALE

PLATE 4

CAMP Mc OUAIDE
 WATSONVILLE, CALIFORNIA
 SANTA CRUZ COUNTY
 DERP-FUDS # J09CA076900
 AERIAL PHOTOGRAPH - 1952

PROJ. DATE: AUGUST 1997	DATE OF PHOTO: 1952
© 1997 by the U.S. Army Corps of Engineers, Santa Cruz District	



FEATURE NO.	FEATURE DESCRIPTION
1.	ALL HOUSING HAS BEEN RAZED
5.	12 LARGE BUILDINGS HAVE BEEN RAZED
7.	DRILL FIELD (S NOW USED FOR BUILDINGS
8.	AREA OF DISTURBED SOIL IS GONE
9.	BERMS
10.	GUN MOUNTS
11.	RIFLE BUTT
12.	ORDNANCE WAREHOUSE
13.	AREA OF RIFLE RANGE, MG RANGE, GAS CHAMBER, ANTI-AIRCRAFT RANGE, PISTOL RANGE, TARGET HOUSE, OBSTACLE COURSE, INFILTRATION COURSE
14.	FOUR LARGE BUILDINGS

NOTE: FEATURE NUMBERS NOT LISTED INDICATE NO CHANGE FROM PREVIOUS PLATE OR FEATURE IS NO LONGER VISIBLE

LEGEND

-  PROJECT LOCATION
-  FEATURE LOCATION



PLATE 5

CAMP Mc OUAIDE
 WATSONVILLE, CALIFORNIA
 SANTA CRUZ COUNTY
 DERP-FUDS #J09CA076900
 AERIAL PHOTOGRAPH - 1960

NOT TO SCALE

PROJ. DATE: AUGUST 1997 DATE OF PHOTO: 1960



FEATURE NO.	FEATURE DESCRIPTION
9.	BERMS REMOVED
15.	NEW BUILDINGS
16.	NEW BUILDINGS

NOTE: FEATURE NUMBERS NOT LISTED INDICATE NO CHANGE FROM PREVIOUS PLATE OR FEATURE IS NO LONGER VISIBLE

LEGEND

- PROJECT LOCATION
- FEATURE LOCATION



NOT TO SCALE

PLATE 6

CAMP Mc OUAIDE
 WATSONVILLE, CALIFORNIA
 SANTA CRUZ COUNTY
 DERP-FUDS #J09CA076900
 AERIAL PHOTOGRAPH - 1963

PROJ. DATE: AUGUST 1997 DATE OF PHOTO: 1963
CH-109-100 (100) PHOTO/PHOTOGRAPH/CALIFORNIA/COUNTY/PHOTO/MODEL/DON 4 527



NOTE: FEATURE NUMBERS NOT LISTED INDICATE NO CHANGE FROM PREVIOUS PLATE OR FEATURE IS NO LONGER VISIBLE

LEGEND

-  PROJECT LOCATION
-  FEATURE LOCATION

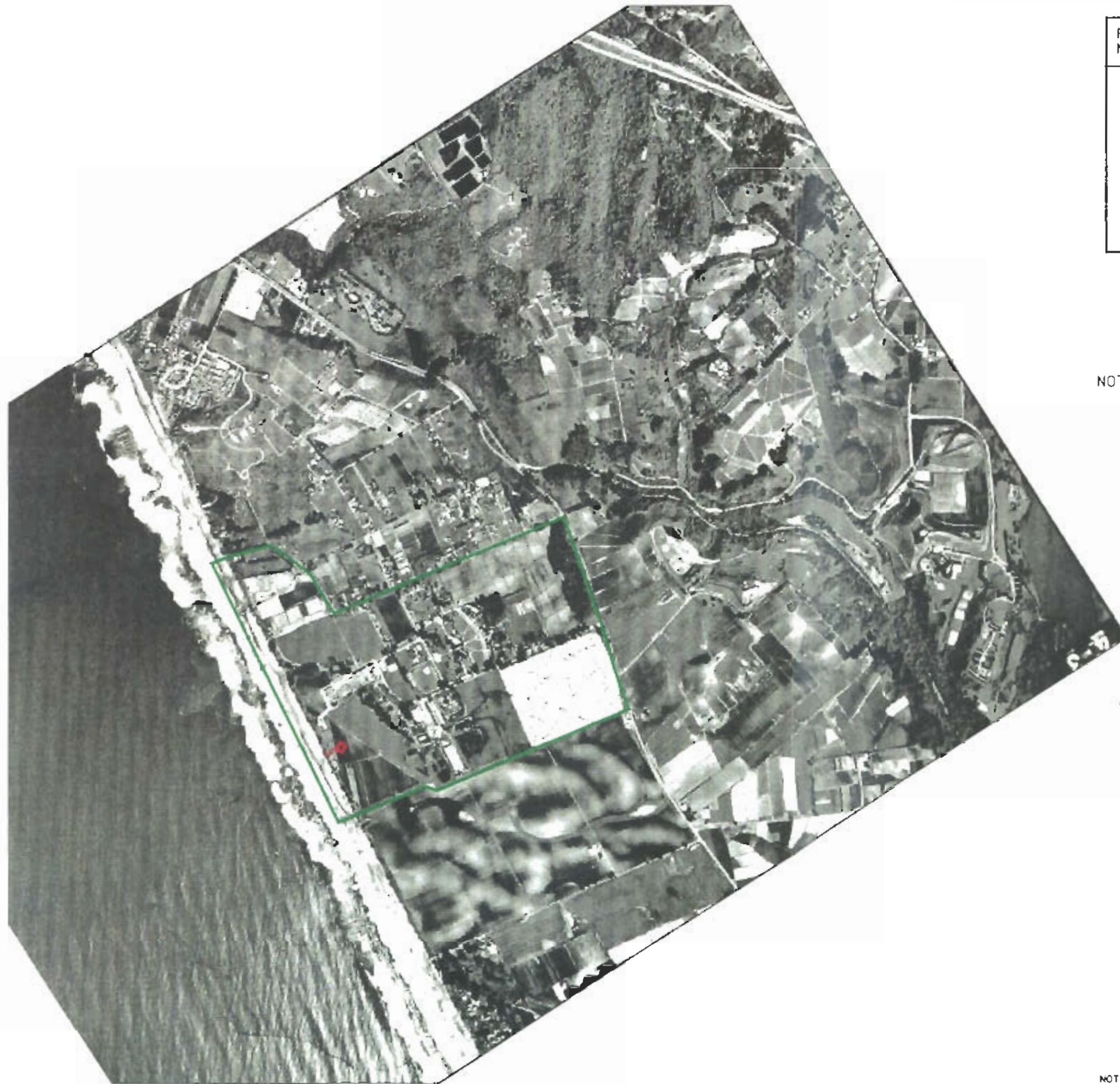


PLATE 7

CAMP Mc OUAIDE
WATSONVILLE, CALIFORNIA
SANTA CRUZ COUNTY
DERP-FUDS #J09CA076900
AERIAL PHOTOGRAPH - 1970

NOT TO SCALE

PROD. DATE:	AUGUST 1977	DATE OF PHOTO:	1970
75-220-1970 10001 81/05/04/05/06/07/08/09/10/11/12/13/14/15/16/17/18/19/20/21/22/23/24/25/26/27/28/29/30/31/32/33/34/35/36/37/38/39/40/41/42/43/44/45/46/47/48/49/50/51/52/53/54/55/56/57/58/59/60/61/62/63/64/65/66/67/68/69/70/71/72/73/74/75/76/77/78/79/80/81/82/83/84/85/86/87/88/89/90/91/92/93/94/95/96/97/98/99/100			



FEATURE NO.	FEATURE DESCRIPTION
11.	RIFLE BUTT HAS BEEN RAZED.

NOTE: FEATURE NUMBERS NOT LISTED INDICATE NO CHANGE FROM PREVIOUS PLATE OR FEATURE IS NO LONGER VISIBLE

LEGEND

- PROJECT LOCATION
- FEATURE LOCATION



NOT TO SCALE

PLATE 8

CAMP Mc OUAIDE
 WATSONVILLE, CALIFORNIA
 SANTA CRUZ COUNTY
 DERP-FUDS #J09CA076900
 AERIAL PHOTOGRAPH - 1996

PROJ. DATE: AUGUST 1997 DATE OF PHOTO: 1996
 25-FEB-1998 11:05 \N\DEM\18-GEO\97\CALIF\SANTA CRUZ\OUIDE\PHOTO\MC09L08A & EX1