



US Army Corps
of Engineers
Rock Island District

Defense Environmental Restoration Program
for
Formerly Used Defense Sites
Ordnance and Explosives

Archives Search Report

Findings
for

CLARKS PASS

SAN BERNARDINO COUNTY, CALIFORNIA
PROJECT NUMBER J09CA731501

March 2001



DEFENSE ENVIRONMENTAL RESTORATION PROGRAM
for
FORMERLY USED DEFENSE SITES

FINDINGS.

ORDNANCE AND EXPLOSIVES
ARCHIVES SEARCH REPORT
FOR
CLARKS PASS
SAN BERNARDINO COUNTY, CALIFORNIA
PROJECT NUMBER J09CA731501

March 2001

Prepared For
U.S. Army Corps of Engineers
Engineering and Support Center, Huntsville
ATTN: CEHNC-OE
Huntsville, Alabama 35807-4301

Prepared By
U.S. Army Corps of Engineers
Rock Island District
ATTN: CEMVR-ED-DO
P.O. Box 2004
Rock Island, Illinois 61204-2004

ORDNANCE AND EXPLOSIVES
 ARCHIVES SEARCH REPORT
 FOR
 CLARKS PASS
 SAN BERNARDINO COUNTY, CALIFORNIA
 PROJECT NUMBER J09CA731501

ACKNOWLEDGMENT				
The following persons provided support as indicated.				
Function	Name	Title	Organization	Telephone
On-Site Assessment	*George Ofslager	Q.A. Spec., Ammunition (QASAS)	CEMVR-ED-DO	(309) 782-1489
	James Aschnewitz	UXO Specialist	CEMVR-ED-DO	(309) 782-1490
Engineering Support	Robert E. Hoffman	Environmental Engineer	CEMVR-ED-DO	(309) 782-1492
Technical Library Search	Thomas Reinhardt	QASAS	CEMVR-ED-DO	(309) 782-1967
Geographic District Support	Lloyd Godard	Project Manager	CESPL-PM-M	(213) 452-4012
Industrial Hygiene	Bob Platt	Industrial Hygienist	MCXM-PMA	(309) 782-0806
CADD Support	Darren Evans	Engineering Technician	CEMVR-ED-DO	(309) 782-3041

* Team Leader

ORDNANCE AND EXPLOSIVES
ARCHIVES SEARCH REPORT
FOR
CLARKS PASS
SAN BERNARDINO COUNTY, CALIFORNIA
PROJECT NUMBER J09CA731501

FINDINGS

TABLE OF CONTENTS

Section	Page
1. INTRODUCTION.....	1
a. Subject and Purpose	
b. Scope	
2. PREVIOUS INVESTIGATIONS.....	2
a. 1999 Preliminary Assessment of Eligibility	
b. Other Investigations	
3. SITE DESCRIPTION	3
a. Existing Land Usage	
b. Climatic Data	
c. Topography	
d. Geology and Soils	
e. Hydrology	
f. Natural Resources	
g. Historical/Cultural Resources	
4. HISTORICAL ORDNANCE PRESENCE	6
a. Chronological Site Summary	
b. Ordnance Related Records Review	
c. Personnel Interviews	
5. SITE ELIGIBILITY	8
a. Confirmed Formerly Used Defense Sites	
b. Potential Formerly Used Defense Sites	

6.	VISUAL SITE INSPECTION	8
	a. General Procedures and Safety	
	b. Area A: Impact Area	
	c. Area B: Buffer Zone	
7.	EVALUATION OF ORDNANCE HAZARDS	10
	a. General Procedures	
	b. Area A: Impact Area	
	c. Area B: Buffer Zone	
8.	SITE ORDNANCE TECHNICAL DATA	12
	a. End Item Technical Data	
	b. Chemical Data of Ordnance Fillers	
9.	EVALUATION OF OTHER SITE INFORMATION	12

APPENDICES

A.	REFERENCE SOURCES
B.	REFERENCES AND ABSTRACTS
C.	GLOSSARY
D.	TEXTS/MANUALS
E.	REPORTS/STUDIES
F.	LETTERS/MEMORANDUMS/MISCELLANEOUS ITEMS
G.	REAL ESTATE DOCUMENTS
H.	NEWSPAPERS/JOURNALS
I.	INTERVIEWS
J.	PRESENT SITE PHOTOGRAPHS
K.	HISTORICAL PHOTOGRAPHS
L.	REFERENCE MAPS/DRAWINGS
M.	ARCHIVE SEARCH REPORT CORRESPONDENCE
N.	PROJECT AREA BIBLIOGRAPHY
O.	REPORT DISTRIBUTION LIST

TABLES

2-1	DERP-FUDS PRELIMINARY ASSESSMENT OF ELIGIBILITY.....	3
3-1	CURRENT LAND OWNERS/USAGE.....	3
3-2	NATURAL AND CULTURAL RESOURCES.....	5
8-1	AMMUNITION USED AND EXPLOSIVE/CHEMICAL FILLERS.....	12
8-2	CHEMICAL DATA OF ORDNANCE FILLERS.....	12

REPORT PLATES

1. Site Map
2. Facility Layout
3. OE Project Areas
4. Real Estate and Photo Locations

This Page Intentionally Left Blank

ORDNANCE AND EXPLOSIVES
ARCHIVES SEARCH REPORT
FOR
CLARKS PASS
SAN BERNARDINO COUNTY, CALIFORNIA
PROJECT NUMBER J09CA731501

1. INTRODUCTION

a. **Subject and Purpose**

(1) This report presents the findings of a historical records search and site inspection for the presence of ordnance and explosives (OE) located at Clarks Pass. This site is located in San Bernardino County, California approximately 40 miles east of Twentynine Palms (see plate 1 for general location map). The investigation was performed under the authority of the Defense Environmental Restoration Program for Formerly Used Defense Sites (DERP-FUDS).

(2) The investigation focused on approximately 640 acres that were identified as a precision bomb target. The War Department used the site during the Second World War; the exact dates of occupancy are unknown.

(3) The purpose of this investigation was to characterize the site for potential OE presence, to include conventional ammunition and chemical warfare materiel (CWM). The investigation was conducted by experienced ordnance experts through thorough evaluation of historical records, interviews, and on-site visual inspection results.

b. **Scope**

(1) This report presents the site history, site description, real estate ownership information, and confirmed ordnance presence (prior to and after site closure), based on available records, interviews, site inspections, and analyses. The analyses provide a complete evaluation of all information to assess current day potential ordnance presence, where actual ordnance presence has not been confirmed.

(2) For the purpose of this report, OE presence consists of live ammunition, ammunition components, CWM or explosives which have been lost, abandoned, discarded, buried, fired, or thrown from demolition pits or burning

pads. These items were either manufactured, purchased, stored, used, and/or disposed of by the War Department or the Department of Defense. Such ammunition/components are no longer under accountable record control of any DOD organization or activity.

(3) Expended small arms ammunition (caliber .50 or smaller) is not considered OE presence. OE further includes "explosive soil" which refers to any mixture in soil, sands, clays, etc., such that the mixture itself is explosive. Generally, 10 percent or more by weight of secondary explosives in a soil mixture is considered explosive soil.

2. PREVIOUS INVESTIGATIONS

a. **1999 Preliminary Assessment of Eligibility**

(1) A Preliminary Assessment of Eligibility (PAE) for Clarks Pass was conducted under DERP-FUDS by the U.S. Army Corps of Engineers, Los Angeles District.

(2) The Finding and Determination of Eligibility (FDE), dated 29 September 1999, concluded that the site near Twentynine Palms, San Bernardino County, California had been formerly used by either the Navy or the Army Air Forces (see document E-1).

(3) The PAE concluded that there were eligible categories under the DERP-FUDS program. Due to the fact that the site was used by the Army and identified as bomb target, an OE project was recommended, DERP-FUDS Project Number J09CA731501, the principal subject of this report (see document E-2 and Table 2-1).

(4) The PAE estimated that the site consisted of approximately 500 acres using an irregular site boundary (see document E-3). The achieve search report (ASR) estimates the site size as 640 acres, the standard size of an Army precision bomb target during World War II.

b. **Other Investigations**

No other investigations pertinent to this site were located.

TABLE 2-1 DERP-FUDS PRELIMINARY ASSESSMENT PROJECTS				
Project Number	DERP Category	Present Phase	Comments	Location
J09CA731501	OE	SI	Ordnance and Explosives Presence	Entire Site 640 Acres (See Plate 1)
	HTRW		None Recommended	
	BD/DR		None Recommended	

3. SITE DESCRIPTION

a. Existing Land Usage

The site is administered by the National Park Service (NPS) and is within the current boundaries of the Joshua Tree National Park. The NPS has designated the site as being within a wilderness zone. In 1994, Congress extended the protections of the Wilderness Act to the area of the park in which the site is located. As a result road, motorized vehicles and structures are prohibited on the site (references B-2, B-3 and B-4).

TABLE 3-1 CURRENT LAND OWNERS/USAGE					
AREA	FORMER USAGE	CURRENT OWNER	CURRENT USAGE	ACREAGE (see note)	COMMENTS
A	Impact Area	NPS	National Park Wilderness Zone	273	See Plates 2, 3 and 4
B	Buffer Zone	NPS	National Park Wilderness Zone	367	See Plates 2, 3 and 4
Note: approximate acreage			TOTAL	640	

b. Climatic Data

(1) The regional climate is influenced by two main sources of air movement. From fall through spring, the area is affected by a northern and middle latitude Pacific air movement which crosses the Sierra Nevada Mountains. As this moist air movement moves east from the Pacific, the mountains deplete the moisture creating a rain shadow effect over the Great Basin and Mojave deserts. During the summer and early fall months, a tropical air mass from the southern Pacific and the Gulf of Mexico dominate the region.

(2) The eastern portion of San Bernardino County is characterized as an arid area with annual precipitation totaling less than four inches. An occasional thunderstorm can produce a sudden heavy rain shower with a resulting flash flood. These flash floods cascade swiftly and forcibly down the mountainsides, eroding the surface and are dangerous to anyone caught in their path.

(3) The relative humidity is moderate to low throughout the year. The yearly early morning average reading is 45 percent which drops to 20 percent in the afternoons.

(4) The normal desert wind speed is 8 miles per hour and blows from a southern or westerly direction.

(5) The average daily and seasonal temperatures for the area are influenced by general air movement from the surrounding mountains and desert topography. June and September have the highest monthly temperature averages of 91 degrees Fahrenheit (°F). The summer daily temperature can rise to above 110 °F in the shade and drop into the 70 °F range at night. The monthly winter average temperatures range between 53 °F and 63 °F during the day. The winter evening temperatures can drop below freezing with strong winds that can result in an exposed flesh hazard (references B-5 and B-6).

c. Topography

(1) The topographic features of the Desert Center area are typical of the Basin and Range Physiographic Province. This consists of large mountain ranges that are separated by broad alluvium filled valleys and dry lake beds.

(2) The terrain of the site is flat with an average elevation of 1950 feet. The primary mountain ranges that surround Clarks Pass are the Coxcomb, Sheep Hole and Pinto Mountains.

d. Geology and Soils

(1) This site is located in the western Mojave area of the Basin and Range Physiographic province. This area is characterized by great expanses of gentle surface with isolated knobs, buttes, ridges, and locally hilly areas. A great variety of lithologies make up the core of several of the mountain ranges. These rocks, reflected in the

Quaternary alluvium, range in age from Mesozoic granitic intrusives to diverse pre-Cretaceous metamorphic and metasediments with some younger volcanics. These contrasting lithologies weather differently, develop distinctive surfaces, and thus affect the geometry, morphology, and photographic tonal expression of Quaternary landforms and soils.

(2) The soil in the area is Holocene-age post pluvial sediments of active fluvial or eolian transport. Typically the surface is still sufficiently unstable so that neither desert pavement nor stone-free vesicular silt has formed. The surface is also calcareous in places due to the continual influx of dust on the soils. These soils were weathered from easily weatherable metamorphic and volcanic rock. In some areas, disseminated lime at a depth around 24 inches may occur (reference B-7).

e. Hydrology

There is no surface water or wells on the site; some small washes and gullies, however, are present. The site has restively dense vegetation when compared to the surrounding area, indication that near surface groundwater may be present.

f. Natural Resources

The site is within a designated wilderness zone of the Joshua Tree National Park. The Desert Tortoise may potentially be found on the site. There are no other known protected species on the site.

TABLE 3-2 NATURAL AND CULTURAL RESOURCES		
RESOURCE CLASSIFICATION	TYPE	COMMENT
Wildlife	Desert Tortoise	Endangered
Vegetation	None Identified	
Historical	None Identified	Contact SHPO, NPS
Archeological	None Identified	Contact SHPO, NPS

g. Historical/Cultural Resources

There are no known historical or archeological resources on the site. However, prior to any intrusive remedial activities on this site, contact with the State

Historical Preservation Officer (SHPO) and the NPS is required to obtain information regarding all locations of archaeological, historical, and cultural resources.

4. HISTORICAL ORDNANCE PRESENCE

a. **Chronological Site Summary**

(1) The history of this site is unknown. As best as can be determined, the Army Air Forces used the site as a practice bomb target during the Second World War. The War Department's use of the property was determined based upon observations during the visual site inspection; there are no records found that mention the acquisition, use or disposal of this site.

(2) The site became a part of the Joshua Tree National Park in 1994 and was designated as a wilderness zone. Practice bombs were discovered on the site by a park ranger in 1998. The park contacted the Marine Corps Air-Ground Combat Center at Twentynine Palms and requested a search of the area by the center's Explosive Ordnance Disposal (EOD) unit. When the EOD unit searched the site, no live spotting charges were noted and 500 pounds of practice bomb debris were removed from the site (see documents F-1 and F-2).

b. **Ordnance Related Records Review**

(1) Research efforts began with a thorough review of all reports, historical documents and reference material gathered during the archival records search. During the review, an effort was made to focus on the area of potential OE presence as described in the Inventory Project Report (INPR) (reference B-1).

(2) Some of the sources that were checked in the search for any OE presence included:

- (a) National Archives
- (b) Regional Archives
- (c) Military History Institute
- (d) U.S. Army Center for Military History
- (e) Air Force Historical Research Agency
- (f) Naval Historical Center
- (g) Marine Corps Historical Center
- (h) Explosive Ordnance Disposal (EOD) Units

For a complete list of sources checked, see Appendix A and Appendix B, sections II and III.

(3) No archival records concerning the World War II use of the site were obtained during the record search. This is not altogether surprising in that this portion of California was considered barren wasteland during the Second World War and record keeping was spotty at best. One record, however, described the unauthorized use of an area "N.E. [of the] base of the Sheephole Mountains" (see document F-3). The described area may be the site now known as the bomb target at Clarks Pass or possibly another yet to be discovered site. In any case, the Army Air Forces had undocumented bomb targets in the vicinity of Clarks Pass during the Second World War.

(4) Aerial photographs clearly show a 500-foot diameter circle on the site (see document K-1). This circle attracted the attention of the park ranger who discovered the site. Upon further investigation the ranger located an additional target, two concentric asphalt circles with an outside diameter of 500 feet, near the clearly observable target (see document L-1). The concentric circles are typical of a World War II era precision bomb target. The other target is likely to be a tactical shaped target to represent an oil storage tank; various geometric shapes were often placed upon bombing ranges to represent targets that aircrews would be likely to attack overseas.

(5) When the targets are overlain onto a topographic map, it is apparent that the targets are located near the center of section 20. The arrangement of the precision bomb target circles near the center of a section was a standard practice of the Army Air Forces. Usually an entire section of land was acquired and with the primary target in the center, all stray bombs would fall within the boundaries of the site.

(6) The PAE used an irregular shape, the locations of ordnance debris found during that investigation, to describe the boundaries of the site (see document E-3). When the irregular shape is compared to the targets and section boundaries (see plate 2), it appears that the bomb run was from the northwest to the southeast; errors in range are more common than errors in deflection. As there were no archival records that described the bomb run, the orientation of expended bombs became a major point of the site inspection.

(7) The EOD incident report for the site stated that the ordnance debris was expended Mark 15 practice bombs indicating that the Navy had used the site (see document F-2). However, Navy use of the site seems doubtful in that this portion of southern California was extensively used by the War Department; the Army Ground Forces operated the California-Arizona Maneuver Area east and south of the site and the 4th Air Force operated the Cadiz Lake bomb target complex north and west of the site. As the boundaries of Navy bomb targets are often different than the standard 640-acre size used for Army precision bomb targets, the exact model number of the practice bombs became a major point of the site inspection.

c. Personnel Interviews

(1) Efforts to locate individuals who had served or had first hand knowledge of Clarks Pass when it was used by the military were unsuccessful. Interviews with those people listed in Appendix A (Reference Sources) of this report were performed, but these people had no knowledge of the site.

(2) Document I-1 is a conversation record an with the park ranger who discovered the site. He is also the president of the local historical society. He said that he was unfamiliar with ordnance type items and discussed the site only in general terms.

5. SITE ELIGIBILITY

a. Confirmed Formerly Used Defense Sites

War Department usage of this site is discussed in sections 2a and 3b of this report. The site was a standard sized 640-acre precision bomb target used the Army Air Forces in the Second World War. Today, no ownership of any part of the site remains with the Department of Defense.

b. Potential Formerly Used Defense Sites

The FDE qualified approximately 500 acre for this site. Additional acreage that was used as a buffer zone has been identified by the ASR, making the total size of the site 640 acres.

6. VISUAL SITE INSPECTION

a. **General Procedures and Safety**

(1) The primary task of the site inspection team was to assess OE presence or potential due to use as a maneuver area and possible demolition, burial or burning sites. On-site inspection was limited to non-intrusive methods in that subsurface sampling was not authorized nor permitted.

(2) Prior to the on-site visit, a thorough review of all available reports, historical documents and available reference material gathered during the archival search was reviewed to ensure awareness of potential ordnance usage and types.

(3) A site safety plan was developed and was utilized by the assessment team to assure safety from injury during the site inspection of the facility (reference B-12). A pre-inspection briefing was conducted which stressed that OE should only be handled by military EOD personnel.

(4) On 26 February 2001, members of the assessment team traveled to the bomb target at Clarks Pass. An investigation of this real estate was conducted to determine the presence or absence of OE. The assessment team did not obtain real estate rights of entry as the site is within a national park.

b. **Area A: Impact Area**

(1) The assessment team had no difficulty finding practice bombs in the impact area; they are scattered throughout the area. Some appear to have been left undisturbed since they fell to the ground in the Second World War. However, a good deal of the debris has been disturbed. The assessment team found one bomb that appeared to have been dug up by someone shortly before the team arrived at the site (see photograph J-1 and plate 4).

(2) One of the primary tasks was to determine the model number of the practice bombs on the site. The assessment team identified the OE as the remains of M38A2 practice bombs, a bomb used by the Army Air Forces. The easiest way to differentiate between M38A2 and Mk 15 debris is to examine the suspension lugs. The Mk 15 used a suspension band onto which the lugs were welded while the M38A2 used steel plates and hex nuts to secure the lug to

the bomb body (see document D-1). All the lugs examined by the assessment team were clearly that of the M38A2 variety.

(3) Another task of the assessment team as to try to determine the bomb run by examining debris. For this task, care was taken to examine only debris that was clearly undisturbed. For those items that were undisturbed, the tailfins were distinctly northwest of the point of impact indicating a northwest to southeast bomb run (see photograph J-2 and plate 4).

(4) The assessment team found a possible additional tactical shape that is in addition to the one clearly visible in aerial photographs. It is a clear area generally void of vegetation surrounded by a locally heavy concentration of bomb bodies (see photograph J-3 and plate 4). This cleared area does not have a clear geometric shape as would be expected, but the numerous bomb bodies at this location indicate that a target was in the vicinity.

(5) The only type of ordnance residue found by the assessment team was M38A2 practice bomb debris. No other items normally associated with air to ground ranges, such as expended rockets or small arms ammunition, were noted by the assessment team.

c. Area B: Buffer Zone

(1) The assessment team found no evidence of impacted bombs in this area. The assessment team noted one instance of a portion of a bomb body in the area, but it appears to have been transported from the impact area; it was about one fourth of a body, entirely above the surface and the fins were nowhere to be found (see photograph J-4 and plate 4).

(2) The assessment team also examined the land north and west of this area and found no OE related debris.

7. EVALUATION OF ORDNANCE HAZARDS

a. General Procedures

(1) Each sub-site was evaluated to determine confirmed, potential, or uncontaminated ordnance presence.

(2) Confirmed ordnance and explosives (OE) presence is based on verifiable historical record evidence or direct witness of OE items (with explosive components and/or inert

debris/fragments) since site closure. Additional field data are not needed to identify a confirmed site.

(a) Verifiable historical record evidence is based on OE items actually seen on site since site closure and authenticated by: historical records (Archive Records, Preliminary Assessment Reports, Site Investigation Reports), local fire departments and law enforcement agencies/bombs squads, military Explosive Ordnance Disposal (EOD) Units, newspaper articles, photographs, or maps.

(b) Direct witness of OE items consists of the site inspection team(s) and other credible witnesses as determined by the ASR Research Team Leader (landowners, workers on-site, soldiers who served there, etc.) verifying that they have seen OE presence on the surface or subsurface since site closure.

(3) Potential ordnance and explosives (OE) presence is based on a lack of confirmed OE presence. Potential OE presence is inferred from records, present day site features, non-verifiable direct witness, or indirect witness. Additional field data are needed to confirm potential OE sites.

(a) Inference from historical records is based on no OE items actually seen on site since site closure and would include documentation (records, aerial photographs, maps) indicating possible OE presence derived from common practice in production, storage, use, or disposal at that time and from records indicating known OE usage.

(b) Inference from present day site features would be the indication of possible OE presence from such obvious features as target circles, depressions, mounds/backstops, OB/OD areas/pits, etc.

(c) Indirect witness would be people who have stated that they have heard of OE presence on-site (hear-say evidence).

(4) Sub-sites with no ordnance presence are based on a lack of confirmed or potential ordnance presence. Additional field data are not needed to assess uncontaminated ordnance sub-sites.

b. **Area A: Impact Area**

This area is considered to have **confirmed** ordnance presence. The assessment team had no problem locating M38A2 practice bomb debris in this area.

c. **Area B: Buffer Zone**

This area is considered to have **potential** ordnance presence. While it appears that there was only one direction for the bomb run, it is not an established fact. If there were other approaches to the target it is possible that bombs landed in the area currently considered a buffer zone.

8. SITE ORDNANCE TECHNICAL DATA

a. **End Item Technical Data**

Table 8-1 has been developed to establish a list of ordnance items that are present on the site.

TABLE 8-1 AMMUNITION USED AND EXPLOSIVE/CHEMICAL FILLERS			
Item	Type, Model	Filler, Weight	Fuze Type
Bomb, 100 lb.	Practice M38A2 w/ Spotting Charge M1A1	Black Powder, 3 lbs.	-

b. **Chemical Data of Ordnance Fillers**

Table 8-2 has been developed to provide information on the explosive/chemical compounds used in the ordnance cited in Table 8-1.

TABLE 8-2 CHEMICAL DATA OF ORDNANCE FILLERS		
Explosive Material	Synonyms	Chemical Compounds
Black Powder		
72% Sodium Nitrate		NaNO ₃
11% Sulfur		S
16% Charcoal		C

9. EVALUATION OF OTHER SITE INFORMATION

There are no other known environmental hazards at the former Clarks Pass other than those already addressed by the Los Angeles District.

This Page Intentionally Left Blank

ORDNANCE AND EXPLOSIVES
ARCHIVES SEARCH REPORT
FOR
CLARKS PASS
SAN BERNARDINO COUNTY, CALIFORNIA
PROJECT NUMBER J09CA731501

APPENDIX A

REFERENCE SOURCES

This Page Intentionally Left Blank

Reference Sources

Organizations	Name	Telephone	Nature of Support
---------------	------	-----------	-------------------

GOVERNMENT SOURCES

FEDERAL AGENCIES

Department of Defense

Defense Technical Information Center and Secure STINET 8725 John J. Kingman Rd Suite 0944 Fort Belvoir, VA 22060-6218	Computer Search (STINET and DTIC)	(703) 427-8274 (703) 767-8228	No Information
---	--------------------------------------	----------------------------------	----------------

Department of Defense Explosives Safety Board (DDESB) 2461 Eisenhower Avenue Alexandria, VA 22331-0600	Computer Search	(703) 325-8624	No Information
---	-----------------	----------------	----------------

National Imagery and Mapping Agency ATTN: ISDFR 4600 Sangamore Road Bethesda, MD 20816	Bill Harris	(301) 227-2495	No Information
--	-------------	----------------	----------------

Army

MANSCEN Library 597 Engineer Loop Bldg 3202, Suite 200 Fort Leonard Wood, MO 65473-8928	Joyce Waybright	(573) 563-4109	No Information
--	-----------------	----------------	----------------

Rock Island Arsenal Museum ATTN: SMCRI-PCA-M Building 60 Rock Island, IL 61299	Chris Leinicke	(309) 794-5021	No Information
---	----------------	----------------	----------------

IOC Historical Office ATTN: AMSIO-EAH, Building 390 Rock Island Arsenal Rock Island, IL 61299	Tom Slattery	(309) 782-1450	No Information
--	--------------	----------------	----------------

Reference Sources
(continued)

Organizations	Name	Telephone	Nature of Support
GOVERNMENT SOURCES			
Department of Defense (continued)			
Army (continued)			
U.S. Army SBCCOM ATTN: AMSCB-CIH 5232 Flemming Road Aberdeen PG, MD 21010	Kathleen Ciolfi	(410) 436-4430	Negative Report
U.S. Army Military History Institute Library 22 Ashburn Drive Carlisle Barracks Carlisle, PA 17013	Louise Frend	(717) 245-3103	Background Information
U.S. Army Military History Institute Archive Branch 22 Ashburn Drive Carlisle Barracks Carlisle, PA 17013	David Keough	(717) 245-3189	No Information
U.S. Army Military History Institute Photo Archives 22 Ashburn Drive Carlisle Barracks Carlisle, PA 17013	Mike Winey	(717) 245-3434	No Information
U.S. Army Ordnance Museum ATTN: ATSL-DOS-M Building 2601 Aberdeen PG, MD 21005-5201	Dr. Atwater	(410) 278-3602	No Information

Reference Sources

(continued)

Organizations	Name	Telephone	Nature of Support
GOVERNMENT SOURCES			
Department of Defense (continued)			
Army (continued)			
759th Ordnance Company (EOD) Building 520 Fort Irwin, CA 92310	SPC Martin	(760) 380-4092	Negative Report
U.S. Army Center of Military History 103 Third Avenue Fort McNair Washington, DC 20319-5058	Staff	(202) 685-2733 DSN 325-2733	See Appendix B, Section II, Parts A&B.
USACE, Los Angeles District Cadastral Branch 911 Wilshire Boulevard Los Angeles, CA 90017-3401	Richard Nagle Armando Moneu	(213) 452-3137 (213) 452-3138	No Information
USACE, Los Angeles District Real Estate Division 911 Wilshire Boulevard Los Angeles, CA 90017-3401	Delores Henderson	(213) 452-3164	No Information
USACE, Los Angeles District DERP/FUDS 911 Wilshire Boulevard Los Angeles, CA 90017-3401	Deb Castens Gill Gonzalez	(213) 452-3990	No Information
Air Force			
Air Force Historical Research Agency Research Division 600 Chennault Drive Maxwell AFB, AL 36112	Joe Caver	(334) 953-5834	No Information

Reference Sources
(continued)

Organizations	Name	Telephone	Nature of Support
GOVERNMENT SOURCES			
Department of Defense (continued)			
Air Force (continued)			
Air Force Historical Research Agency (AFHRA) Information Systems Division 600 Chennault Circle Maxwell AFB, AL 36112-6424	Sheila Roten Essie Roberts	(334) 953-6884 (334) 953-2439	No Information
Air University Library 600 Chennault Circle Maxwell AFB, AL 36112-6424	Reference Services	(334) 953-2888	No Information
Navy			
Naval Historical Center Washington Navy Yard Navy Department Library 901 M Street, SE Washington, DC 20374-5060	Staff	(202) 433-4132	See Appendix B, Section II, Parts A and B
Naval Historical Center Washington Navy Yard Naval Aviation History Branch 901 M Street, SE Washington, DC 20374-5060	Staff	(202) 433-4407	See Appendix B, Section II, Parts A and B
Naval Historical Center Washington Navy Yard Operational Archives 901 M Street, SE Washington, DC 20374-5060	Staff	(202) 433-2833	See Appendix B, Section II, Parts A and B
Marine Corps Historical Center Building 58 Washington Navy Yard Washington, DC 20374	Staff	(202) 433-3447	See Appendix B, Section II, Parts A and B

Reference Sources
(continued)

Organizations	Name	Telephone	Nature of Support
---------------	------	-----------	-------------------

GOVERNMENT SOURCES

Department of Defense (continued)

Navy (continued)

Naval Facilities Engineering Services	Brian Thompson	(805) 982-1124	No Information
---------------------------------------	----------------	----------------	----------------

Technical Information Center
ATTN: ESC 72
1100 23rd Avenue
Port Hueneme, CA 93043

Naval Construction Battalion Center (NCBC)	Carol Marsh	(805) 982-5913	No Information
--	-------------	----------------	----------------

NAVFAC Historian Office
CB Logistics Center, Code 09
4111 San Pedro St.
Port Hueneme, CA 93043

DSN 551-5913
(805) 982-5563
DSN 551-5563

NAVEODTECDIV	Betty Arbogast	(301) 743-6834	No Information
--------------	----------------	----------------	----------------

Technical Library
2008 Stump Neck Road
Indianhead, MD 20640-5070

Dawn Risko

U.S. Naval War College Archives	Dr. Evelyn	(401) 841-2435	No Information
---------------------------------	------------	----------------	----------------

686 Cushing Road
Newport, RI 02841-1207

Cherpack

U.S. Naval War College Library	Alice Juda	(401) 841-4551	No Information
--------------------------------	------------	----------------	----------------

686 Cushing Road
Newport, RI 02841-1207

Maggie Rauch

U.S. Naval War College Museum	Tony Nicolosi	(401) 841-4052	No Information
-------------------------------	---------------	----------------	----------------

686 Cushing Road
Newport, RI 02841-1207

Bob Cembrola

Reference Sources
(continued)

Organizations	Name	Telephone	Nature of Support
GOVERNMENT SOURCES			
Department of Defense (continued)			
Navy (continued)			
USMC EOD Unit, MCAGCC Twentynine Palms, CA 92272	Sgt. Richardson	(760) 830-7215 -6885	Negative Report
National Archives and Records Administration			
NARA-Archives I (Old Military and Civil Textual Division) Pennsylvania Avenue and 7th Street, NW Washington, DC 20408	Staff	(202) 208-1903 (202) 208-0370 (202) 219-6273	See Appendix B, Section II, Parts A and B
NARA-Archives II (Cartographic and Architectural Branch) 8601 Adelphi Road College Park, MD 20740	Staff	(301) 713-7040	See Appendix B, Section II, Parts A and B
NARA-Archives II (Still Picture Branch) 8601 Adelphi Road College Park, MD 20740	Staff	(301) 713-6660	See Appendix B, Section II, Parts A and B
NARA-Archives II (Motion Picture, Sound, and Video Branch) 8601 Adelphi Road College Park, MD 20740	Staff	(301) 713-7060	See Appendix B, Section II, Parts A and B

Reference Sources
(continued)

Organizations	Name	Telephone	Nature of Support
GOVERNMENT SOURCES			
National Archives and Records Administration (continued)			
NARA-Archives II (Textual Reference Branch) 8601 Adelphi Road College Park, MD 20740	Staff	(301) 713-7250	See Appendix B, Section II, Parts A and B
Washington National Records Center 4205 Suitland Road Suitland, MD 20746-8001	Staff	(301) 457-7190	See Appendix B, Section II, Parts A and B
NARA-Pacific Region (Laguna Niguel) 24000 Avila Road Laguna Niguel, CA 92677	Bill Doty Paul Wormser	(949) 360-2641	See Appendix B, Section III, Parts A and B
NARA-Pacific Region (San Francisco) 1000 Commodore Drive San Bruno, CA 94066	John Hedger Kathleen O'Connor Barbara Bepler	(650) 876-9018	See Appendix B, Section III, Parts A and B
National Personnel Records Center 9700 Page Avenue St. Louis, MO 63132	Wilson Sullivan	(314) 538-4085	See Appendix B, Section III, Parts A and B
Department of Agriculture Natural Resources Conservation Service P.O. Box 788115 Building 1456, Griffin Road Twenty-nine Palms, CA 92278	John Rule	(760) 830-7011	No Information

Reference Sources
(continued)

Organizations	Name	Telephone	Nature of Support
GOVERNMENT SOURCES			
Department of Agriculture (continued)			
Natural Resources Conservation Service 45-691 Monroe, Suite 4 Indio, CA 92201	Staff	(760) 347-3675	No Information
Department of the Interior			
EROS Data Center Sioux Falls - ESIC U.S. Geological Survey Sioux Falls, SD 57198	Staff	(605) 594-6151	Aerial Photographs
USGS Information Services Box 25286, Bldg 810 Denver Federal Center Denver, CO 80225	Staff	(303) 202-4700	Topographical Maps
Joshua Tree National Park 74485 National Park Drive Twentynine Palms, CA 92277	Jeff Ohlfs	(760) 367-5500	Interview (I-1)
Department of Commerce			
NOAA National Climatic Data Center Federal Building, Room 305 Ashville, NC 28801	Yolanda Goosch Sam Mccowan	(704) 271-4272	Climatic Data
United States Congress			
Library of Congress Prints and Photographs Division 101 Independence Avenue, SE Washington, DC 20540-4650	Staff	(202) 707-5000	No Information

Reference Sources
(continued)

Organizations	Name	Telephone	Nature of Support
GOVERNMENT SOURCES			
United States Congress (continued)			
Library of Congress Geography and Map Division 101 Independence Avenue, SE Washington, DC 20540-4650	Staff	(202) 707-5000	No Information
State Agencies			
Sacramento Fish and Wildlife Service 2800 Cottage Way, Room W2605 Sacramento, CA 95825	Harry Mossman	(916) 414-6650	Endangered and Threatened Species Information
California State Archives 1020 O Street Sacramento, CA 95814	Mr. Metzger	(916) 653-2246	No Information
California State Library 914 Capital Mall Library And Courts Building Sacramento, CA 94237-0001	John Gonzales Sybylle Zemitis	(916) 654-0176 Fax 654-8777	No Information
San Diego State University Special Collections 5300 Campanile Drive San Diego, CA 92182-0511	Bill Payne	(619) 594-6791	No Information
San Diego State University Reference Branch 5300 Campanile Drive San Diego, CA 92182-0511	Karen Sharp	(619) 594-6724	No Information
San Diego State University Government Documents/Maps Section 5300 Campanile Dr. San Diego, CA 92182-0511	Bruce Harley	(619) 594-5832	No Information

Reference Sources
(continued)

Organizations	Name	Telephone	Nature of Support
GOVERNMENT SOURCES			
State Agencies (continued)			
Archaeological Information Center (SHPO) San Bernardino County Museum 2024 Orange Tree Lane Redlands, CA 92374	Robin Laska	(909) 307-2669 ext. 255	No Information
University Of California PO Box 19557 Irvine, CA 92110	Reference Desk	(714) 824-6836	No Information
University Of California Government Documents Department PO Box 19557 Irvine, CA 92110	Jeff Schneidewind Kay Collins	(714) 824-7234	No Information
University of California Archives PO Box 19557 Irvine, CA 92713	Mary Ellen Goddard	(714) 824-7193	No Information
County and Local Agencies			
Joshua Tree Library 6465 Park Blvd. Joshua Tree, CA 92252	Staff	(760) 366-8615	Background Information
San Bernardino County Museum 2024 Orange Tree Lane Redlands, CA 92374	Robin Laska Noella Benvenuti Pamela Frost	(909) 798-8570	No Information
San Bernardino County Planning 385 North Arrowhead Ave San Bernardino, CA 92415	Marla Taub	(909) 387-4131	No Information

**Reference Sources
(continued)**

Organizations	Name	Telephone	Nature of Support
GOVERNMENT SOURCES			
County and Local Agencies (continued)			
San Bernardino County Sheriff and Bomb Squad 655 East 3rd St. San Bernardino, CA 92415	Tom Alsky Bill Myers Bob Hall	(909) 387-3598 -3606 -3601 Fax: -3455	No Information
San Bernardino Public Library 555 West 6th St. San Bernardino, CA 92415	Staff	(909) 381-8208	No Information
NON-GOVERNMENT SOURCES			
National Agencies			
Council on America's Past 518 Why Worry Lane Phoenix, AZ 85021	Heliogram Publication	(800) 396-4693	No Information
Online Computer Library Center 6565 Frantz Road Dublin, OH 43017-3395	Computer Search (OCLC)	(800) 848-5878	No Information
Scientific and Technical Information Library System 689 Discovery Drive Huntsville, AL 35806	Computer Search (STILAS)	(205) 922-9820	No Information
Local Agencies			
California Military Museum 1119 2nd Street Sacramento, CA 95814	Staff	(916) 442-2883 Fax 442-7432	No Information
California Historical Society 678 Mission Street San Francisco, CA 94105	Beth Grahm	(415) 357-1848 Fax 357-1850	No Information

This Page Intentionally Left Blank

ORDNANCE AND EXPLOSIVES
ARCHIVES SEARCH REPORT
FOR
CLARKS PASS
SAN BERNARDINO COUNTY, CALIFORNIA
PROJECT NUMBER J09CA731501

APPENDIX B

REFERENCES AND ABSTRACTS

APPENDIX B
REFERENCES AND ABSTRACTS

Table of Contents

SECTION I	References and Abstracts
SECTION II	National Capitol Region Archive Search References
	Part A: Positive Reports
	Part B: Negative Reports
SECTION III	Regional National Archives Search References
	Part A: Positive Reports
	Part B: Negative Reports

APPENDIX B

REFERENCES AND/OR ABSTRACTS

- B-1. U.S. Army Corps of Engineers, Los Angeles District, DERP-FUDS Preliminary Assessment of Eligibility, Clarks Pass, 29 September 1999 (E-1, E-2 and E-3).
- B-2. General Management Plan Amendment, Backcountry and Wilderness Management Plan, Joshua Tree National Park, Riverside and San Bernardino Counties, California,
- B-3. California Desert Protection Act, 1994.
- B-4. Wilderness Act, 1964.
- B-5. U.S. Army Corps of Engineers, Rock Island District, "Archives Search Report, Camp Coxcomb", September 1996.
- B-6. National Oceanic and Atmospheric Administration, Climate of California, Revised June 1982.
- B-7. Shlemon, Roy J, "Quaternary Soil-Geomorphic Relationships, Southeastern Mojave Desert, California and Arizona, South Coast Geological Society, Newport Beach, CA.
- B-8. Joshua Tree National Park, Memorandum requesting EOD assistance, 14 January 1998. Obtained from St. Louis District project files for the Marine Corps Air-Ground Combat Center at Twentynine Palms (F-1).
- B-9. USMC Explosive Ordnance Disposal Unit - Twentynine Palms, EOD Incident Report, 22 January 1998. Obtained from St. Louis District project files for the Marine Corps Air-Ground Combat Center at Twentynine Palms (F-2).
- B-10. Los Angeles District, Memorandum describing unauthorized bomb targets, 31 July 1947. Obtained from St. Louis District project files for the Marine Corps Air-Ground Combat Center at Twentynine Palms (F-3).
- B-11. Aerial Photograph, 28 September 1995. Obtained from the USGS EROS Data Center (K-1).
- B-12. U.S. Army Corps of Engineers, Rock Island District, "Site Safety Plan for Ordnance and Explosive Waste", 25 June 1992 with appendix A-257 dated 13 December 2000.

- B-13. Ordnance Corps, Drawing, Bomb Practice, 100 lb. M38A2 Metal Parts Assembly and Marking Diagram, 82-3-213, 23 August 1955 (D-1).
- B-14. War Department, Ammunition Inspection Guide, TM 9-1904, 2 March 1944 (Table 8-1).
- B-15. War Department, Bombs for Aircraft, TM 9-1980, 3 June 1942 (Table 8-1, D-2).
- B-16. Ordnance Department, Complete Round Charts, No. 5981, 1947 (Table 8-1).
- B-17. Departments of the Army and Air Force, Military Explosives, TM 9-1910 TO 11A-1-34, 14 April 1955 (Table 8-2).
- B-18. U.S. Army Corps of Engineers, Huntsville Division, "Archives Search Report Procedural Document", June 1994.
- B-19. Department of the Army, Environmental Protection and Enhancement, AR 200-1, 23 April 1990.
- B-20. U.S. Army Corps of Engineers, Huntsville Division, "Management Plan for Ordnance and Explosive Waste (OEW) Mandatory Center of Expertise (MCX) and Design Center" CEHND 1105-3-9, 19 August 1992.
- B-21. U.S. Army Corps of Engineers, Rock Island District, "CENCR Management Plan for Ordnance and Explosive Waste Investigations", dated 20 July 1992, with revisions dated 10 March 1995 and 23 June 1995.
- B-22. Ohfs, Jeff, Sketch of Bomb Target, circa 1998. Obtained from Los Angeles District project files (L-1).

SECTION II
NATIONAL CAPITAL REGION ARCHIVES FINDINGS
PART A
POSITIVE FINDINGS

CLARKS PASS, CA

Also Researched Under: At Clarks Pass, CA; Twentynine Palms, CA; San Bernardino County, CA; Joshua Tree National Park, CA; Twentynine Palms Marine Corps Station, CA; US Navy Auxiliary Station, Twentynine Palms, CA; and California – Arizona Maneuver Area, CA.

***NARA - ARCHIVES II – TEXTUAL BRANCH
COLLEGE PARK, MD***

RG 38 (Records of the Office of the Chief of Naval Operations)

Entry 2: General Correspondence, July 1942 - June 1946
Box 710

Letters Relative to Real Estate Acquisition, Skip Bombing Target, Naval Auxiliary Air Station, Twenty-Nine Palms, California

RG 74 (Records of the Bureau of Ordnance)

Entry 1002A: Construction and Procurement Subject Files, 1945
Box 1282

Letter Relative to Bomb Type Ammunition Allowance and Stowage Requirements, Eleventh Naval District Air Bases

Entry 1002A: Construction and Procurement Subject Files, 1945
Box 1283

Letter Relative to Ready Service Ammunition Stowage Facilities, Eleventh Naval District Air Bases, Including Naval Auxiliary Air Station, Twenty-Nine Palms, California, 30 July 1945

Entry 1002A: Construction and Procurement Subject Files, 1945
Box 1283

Letter Relative to Rocket and Bomb Stowage, Eleventh Naval District Air Bases, 2 May 1945

Entry 1002B: Construction and Procurement Subject Files, 1946
Box 287

Correspondence Relative to Service and Training Ammunition and Ammunition Component Allowances for 11th Naval District Installations, Including Marine Corps Air Station, El Centro, California, 26 January - 28 February 1946

CLARKS PASS, CA

Entry 1002B: Construction and Procurement Subject Files, 1946
Box 287

Letter Relative to Request for Disposition of Excess Ammunition Stocks at Eleventh Naval District Installations, Including Naval Air Station, El Centro, and Marine Corps Air Station, Miramar, California

Entry 1002B: Construction and Procurement Subject Files, 1946
Box 287

Letter Relative to Request for Disposition of Small Arms Ammunition, Naval Air Station, El Centro, California, 12 August 1946

Entry 1002C: Construction and Procurement Subject Files, 1947
Box 130

Letter and Enclosure Relative to Munition Levels at Eleventh Naval District Marine Corps Air Stations, Including Miramar, California, 21 March 1947

Entry 1002C: Construction and Procurement Subject Files, 1947
Box 209

Letter Relative to Issuance of Rocket Components to Naval Air Station, El Centro, California, 18 April 1947

RG 330 (Records of the Office of the Secretary of Defense)

Entry 11: Inventories of Military Real Property, 1954 - 1957
Box 82

Inventory Summary of Military Real Property - Installation Summary, Naval Auxiliary Air Station, El Centro, California

Entry 11: Inventories of Military Real Property, 1954 - 1957
Box 82

Inventory Summary of Military Real Property - Installation Summary, Naval Auxiliary Air Station, El Centro, California

Entry 11: Inventories of Military Real Property, 1954 - 1957
Box 86

Inventory Summary of Military Real Property - Installation Summary, US Naval Auxiliary Air Station, El Centro, California

Entry 11: Inventories of Military Real Property, 1954 - 1957
Box 86

Inventory Summary of Military Real Property - Installation Summary, US Naval Auxiliary Air Station, El Centro, California

CLARKS PASS, CA

Entry 11: Inventories of Military Real Property, 1954 - 1957
Box 86

Inventory Summary of Military Real Property - Installation Summary, US Naval
Auxiliary Air Station, El Centro, California

RG 429 (Records of Organizations in the Executive Office of the President)

Entry 12: Central Real Property Surveys
Box 65

Department of the Navy Installation Survey Report, Naval Air Facility, El Centro,
California, 10 - 13 October 1972, Including Summary of Survey Report and Site
History

***NARA - ARCHIVES II - CARTOGRAPHIC BRANCH
COLLEGE PARK, MD***

RG 71 (Records of the Bureau of Yards and Docks)

Series 1253
Sheet 3-3

Oversize Map, Marine Air Corps Station, El Centro, Showing Conditions on 30
June 1943

This Page Intentionally Left Blank

SECTION II
NATIONAL CAPITAL REGION ARCHIVES FINDINGS
PART B
NEGATIVE FINDINGS

CLARKS PASS, CA

Also Researched Under: At Clarks Pass, CA; Twentynine Palms, CA; San Bernardino County, CA; Joshua Tree National Park, CA; Twentynine Palms Marine Corps Station, CA; US Navy Auxiliary Station, Twentynine Palms, CA; and California – Arizona Maneuver Area, CA.

***LIBRARY OF CONGRESS – GEOGRAPHY AND MAP DIVISION
WASHINGTON, DC***

Sanborn Map Collection
US Department of the Interior, Geological Surveys

***LIBRARY OF CONGRESS – PRINTS AND PHOTOGRAPHS
DIVISION
WASHINGTON, DC***

Divisional Catalogues
Geographic Catalogues
HABS/HAER
Stereographic Catalogues
Subject Catalogues
Videodisk Collection

***MARINE CORPS HISTORICAL CENTER
WASHINGTON, DC***

Geographic Files

***NARA – ARCHIVES I
WASHINGTON, DC***

RG 26 (Records of the U. S. Coast Guard)
Entry: Narrative Histories of World War II, 12th District
Entry 82C: Central Correspondence, 1942 – 1953
Entry 100: Real Property Surveys

CLARKS PASS, CA

RG 38 (Records of the Office of the Chief of Naval Operations)
Entry 275: Security Classified General Files Relating to the Development of
Shore Stations, 1920 - 1942

RG 49 (Records of the Bureau of Land Management)
Entry: Land Entry Papers

RG 71 (Records of the Bureau of Yards and Docks)
Entry: General Correspondence, Shore Establishments, 1925 - 1942

RG 74 (Records of the Bureau of Ordnance)
Entry 62: General Correspondence, 1925 - 1942

RG 80 (General Records of the Department of the Navy, 1798 - 1947)
Entry 22: General Correspondence, 1926 - 1949

RG 127 (Records of the U.S. Marine Corps)
Entry 18: General Correspondence, Office of the Commandant, 1917 - 1938

***NARA - ARCHIVES II - TEXTUAL BRANCH
COLLEGE PARK, MD***

RG 16 (Records of the Department of Agriculture)
Entry 17: General Correspondence of the Office of the Secretary of Agriculture,
1906 - 1965

RG 18 (Records of the Army Air Force)
Entry 2: Unclassified Decimal File, June 1944 - 1946

RG 30 (Records of the Bureau of Public Roads)
Entry 54: Highway Traffic Advisory Committee to the Defense Department, 1941
- 1945

RG 38 (Records of the Office of the Chief of Naval Operations)
Entry: CNO Administrative Correspondence, July 1943 - June 1946
Entry 269: Base Maintenance Division, Minutes of Home Base Development
Council

RG 48 (Records of the Department of the Interior)
Entry 349A: Central Classified Files, 1907 - 1936
Entry 349B: Central Classified Files, 1937 - 1953
Entry 842: Bureau of Indian Affairs Inspection Reports, 1907 - 1924

RG 51 (Records of the Office of Management and Budget)
Entry 149A: War Projects Unit, General Files, 1940 - 1945

CLARKS PASS, CA

- RG 52 (Records of the Bureau of Medicine and Surgery)
Entry: Subject Files, 1941 – 1953
- RG 57 (Records of the United States Geological Survey)
Entry 27: Correspondence and Related Records, 1906 – 1945
- RG 69 (Records of the Public Works Administration)
Entry: Central Decimal Files, 1935 - 1944
- RG 71 (Records of the Bureau of Yards and Docks)
Entry: Contract Correspondence, 1927 - 1942
Entry 1001: Naval Property Case Files, 1941 - 1958
- RG 72 (Records of the Bureau of Aeronautics)
Entry 62B: General Correspondence, 1943 – 1945
Entry 67: Confidential Correspondence, 1922 – 1944
Entry 67A: Confidential General Correspondence, 1922 – 1947
Entry 75A: Records of Divisions and Offices, Office Services Division, Central Correspondence, Secret Correspondence, 1939 - 1947
Entry 1001A: Unclassified General Correspondence, 1948 – 1959
Entry 1003A: Confidential General Correspondence, 1948 – 1949
Entry 1004B: Secret General Correspondence, 1949
Entry 1021: Records Relating to Inactive Air Stations, 1943 - 1959
- RG 74 (Records of the Bureau of Ordnance)
Entry 25: General Correspondence, Confidential, 1942
Entry 25: General Correspondence, Restricted, 1942
Entry 25: General Correspondence, Confidential, 1943
Entry 25: General Correspondence, Restricted, 1943
Entry 25: General Correspondence, Confidential, 1944
Entry 25: General Correspondence, Restricted, 1944
Entry 1001: General Correspondence, 1907 - 1949
Entry 1003A: Confidential General Correspondence, 1948 – 1949
Entry 1014: General Correspondence, 1948 – 1959
- RG 80 (General Records of the Department of the Navy, 1800 - 1947)
Entry: Assistant Secretary of War for Air Artemis Gates, General Correspondence, September 1941 – December 1945
Entry: General Correspondence, July 1942 – June 1943
Entry 16: Formerly Security Classified General Correspondence of the CNO/Secretary of the Navy, 1940 – 1947
Entry 32G: General Correspondence of the Executive Officer of the Secretary of the Navy, July 1946 – January 1947
Entry 153: Army – Navy Munition Board: Navy Section, Correspondence and Reports, 1922 - 1942

CLARKS PASS, CA

- Entry 256: Index to Reports from Shore Establishments, December 1943 – May 1944
Entry 1318: General Correspondence, 1941 - 1845
- RG 121 (Records of the Public Building Service)
Entry 80: Title Papers and Site Registers, 1938 - 1943
- RG 127 (Records of the U.S. Marine Corps)
Entry 18A: General Correspondence, Office of the Commandant, January 1939 – June 1950
- RG 143 (Records of the Bureau of Supplies and Accounts)
Entry 35: Military Construction Program Project Files, 1957 – 1964
- RG 162 (Records of the Federal Works Agency)
Entry 21: Records of the War Public Works Program, 1941 - 1949
- RG 218 (Records of the Joint Chiefs of Staff)
Entry: Series 1942 – 1959 (Geographic File)
- RG 225 (Records of Joint Army and Navy Boards and Committees)
Entry 4: General Correspondence, 1922 – 1946
Entry 4A: Army and Navy Munition Board Central Files, 1922 – 1941
Entry 5: Security Classified General Correspondence, 1922 - 1945
- RG 250 (Records of the Office of War Mobilization and Reconversion)
Entry 73: Federal Construction Projects, August – October 1946
- RG 269 (General Records of the General Services Administration)
Entry 62: Real Property Disposal Case Files
- RG 270 (Records of the War Assets Administration)
Entry 3: Office of War Information Subject Files, 1946 – 1949
Entry 4: Records of the General Review Board, 1946 – 1948
Entry 8: Records of the Real Property Review Board, 1946 – 1949
Entry 9: Subject File of the Central Office of Real Property, 1946 - 1949
- RG 291 (Records of the Federal Property Resources Service)
Entry 5: Real Property Disposal Case Files
- RG 334 (Records of Interservice Agencies)
Entry 15: Armed Forces Explosives Safety Board

CLARKS PASS, CA

RG 337 (Records of Headquarters Army Ground Forces)

Entry 29C: Desert Training Center, Decimal File, 1942 – 1943

Entry 29E: Desert Training Center, Subject Files, 1942 – 1943

Entry 29D: Desert Training Center, Histories, 1942 – 1943

Entry 55: General Correspondence, 1942 - 1945

Entry 55A: Project Decimal File, March 1942 – 1947

RG 428 (General Records of the Department of the Navy, 1947 – Present)

Entry: Secretary of the Navy, Correspondence, 1948 - 1951

Entry 2: Formerly Security Classified General Correspondence of the Deputy Chief of Naval Operations, 1948 - 1952

Entry 5: Formerly Security Classified Chronological File, 1948 - 1950

RG 429 (Records of the Organizations in the Executive Office of the President)

Entry 17: Records Relating to Property and Installation Surveys, 1978 – 1984

***NARA - ARCHIVES II - CARTOGRAPHIC BRANCH
COLLEGE PARK, MD***

RG 18 (Records of the Army Air Corps)

RG 30 (Records of the Bureau of Public Roads)

RG 74 (Records of the Bureau of Ordnance)

RG 80 (Records of the Department of the Navy)

RG 145 (Records of the Agricultural Stabilization and Conservation Service)

RG 373 (Records of the Defense Intelligence Agency)

***NARA – ARCHIVES II – MOTION PICTURE, SOUND, AND VIDEO
COLLEGE PARK, MD***

RG 69 (Records of the Work Projects Administration)

RG 200 (National Archives Gift Collection)

RG 428 (General Records of the Department of the Navy)

***NARA - ARCHIVES II - STILL PICTURES BRANCH
COLLEGE PARK, MD***

RG 18 (Records of the Army Air Force)

RG 30 (Records of the Bureau of Public Roads)

RG 71 (Records of the Bureau of Yards and Docks)

RG 74 (Records of the Bureau of Ordnance)

RG 80-G (Records of the Department of the Navy, 1798 - 1947)

RG 181 (Records of the Naval Districts and Shore Establishments)

RG 428 (General Records of the Department of the Navy)

CLARKS PASS, CA

***NAVAL HISTORICAL CENTER – AVIATION HISTORY OFFICE
WASHINGTON, DC***

Aviation History File
Command Histories

***NAVAL HISTORICAL CENTER – NAVY DEPARTMENT LIBRARY
WASHINGTON, DC***

United States Naval Administrative Histories

***NAVAL HISTORICAL CENTER – OPERATIONAL ARCHIVES
WASHINGTON, DC***

Administrative Histories: The Navy in World War II

SECTION III
REGIONAL NATIONAL ARCHIVES FINDINGS
PART A
POSITIVE FINDINGS

CLARKS PASS
(UNNAMED BOMBING TARGET WITHIN THE JOSHUA TREE NATIONAL FOREST)

Not Used

This Page Intentionally Left Blank

SECTION III
REGIONAL NATIONAL ARCHIVES FINDINGS
PART B
NEGATIVE FINDINGS

CLARKS PASS
(UNNAMED BOMBING TARGET WITHIN THE JOSHUA TREE NATIONAL FOREST)

NARA, PACIFIC REGION (LAGUNA NIGUEL)
LAGUNA NIGUEL, CA

RG 30, Records of the Bureau of Public Roads
All Entries
Nothing Found

RG 49, Records of the Bureau of Land Management
All Entries
Nothing Found

RG 156, Records of the Office of the Chief of Ordnance
All Entries
Nothing Found

RG 181, Records of Naval Districts and Shore Establishments
All Entries
Nothing Found

RG 219, Records of the Office of Defense Transportation
All Entries
Nothing Found

RG 336, Records of the Office of the Chief of Transportation
All Entries
Nothing Found

RG 338, Records of U.S. Army Commands
All Entries
Nothing Found

NARA, NATIONAL PERSONNEL RECORDS CENTER
ST LOUIS, MO

RG 338, Records of U.S. Army Commands
All Entries
Nothing Found

NARA, PACIFIC REGION (SAN FRANCISCO)
SAN BRUNO, CA

RG 30, Records of the Bureau of Public Roads
All Entries
Nothing Found

RG 49, Records of the Bureau of Land Management
All Entries
Nothing Found

RG 77, Records of the Office the Chief of Engineers
All Entries
Nothing Found

RG 92, Records of the Office of the Quartermaster General
All Entries
Nothing Found

RG 111, Records of the Chief Signal Officer
All Entries
Nothing Found

RG 112, Records of the Surgeon General (Army)
All Entries
Nothing Found

RG 121, Records of the Public Buildings Service
All Entries
Nothing Found

RG 156, Records of the Office of the Chief of Ordnance
All Entries
Nothing Found

RG 181, Records of Naval Districts and Shore Establishments
All Entries
Nothing Found

RG 219, Records of the Office of Defense Transportation
All Entries
Nothing Found

RG 269, General Records of the General Services Administration
All Entries
Nothing Found

RG 270, Records of the War Assets Administration
All Entries
Nothing Found

RG 291, Records of the Federal Property Resources Service
All Entries
Nothing Found

RG 338, Records of U.S. Army Commands
All Entries
Nothing Found

This Page Intentionally Left Blank

ORDNANCE AND EXPLOSIVES
ARCHIVES SEARCH REPORT
FOR
CLARKS PASS
SAN BERNARDINO COUNTY, CALIFORNIA
PROJECT NUMBER J09CA731501

APPENDIX C

GLOSSARY

This Page Intentionally Left Blank

APPENDIX C

GLOSSARY

AR	Army Regulation
BD	Building Demolition or Base Detonating
BD/DR	Building Demolition/Debris Removal
CEHNC	Corps of Engineers, Huntsville Center
CEMVR	Corps of Engineers, Mississippi Valley Division, Rock Island District
CENCR	Corps of Engineers, North Central Division, Rock Island District
CESPL	Corps of Engineers, South Pacific Division, Los Angeles District
COE	Corps of Engineers
CON/HTRW	Containerized Hazardous, Toxic, and Radioactive Waste
CWM	Chemical Warfare Material
DA	Department of the Army
DAC	Defense Ammunition Center
DACS	Defense Ammunition Center and School
DERP	Defense Environmental Restoration Program
DOD	Department of Defense
EE/CA	Engineering Evaluation/Cost Evaluation
EOD	Explosive Ordnance Disposal
EPA	Environmental Protection Agency
FDE	Findings and Determination of Eligibility
FUDS	Formerly Used Defense Site
HTRW	Hazardous, Toxic and Radiological Waste
HTW	Hazardous and Toxic Waste
INPR	Inventory Project Report
IRP	Installation Restoration Program
NARA	National Archives Records Administration
NPS	National Park Service
OE	Ordnance and Explosives
PAE	Preliminary Assessment of Eligibility
PN	Project Number or Part Number
QASAS	Quality Assurance Specialist (Ammunition Surveillance)
RD/RA	Remedial Design/Remedial Action
RG	Record Group
SAB	Same As Before
SI	Site Investigation or Site Inspection
SIOAC-ES	Army Material Command Ammunition Center- Explosive Safety
TM	Technical Manual
USA	U.S. Army
USACE	U.S. Army Corps of Engineers
USATCES	U.S. Army Technical Center for Explosives Safety
UXO	Unexploded Ordnance

This Page Intentionally Left Blank

ORDNANCE AND EXPLOSIVES
ARCHIVES SEARCH REPORT
FOR
CLARKS PASS
SAN BERNARDINO COUNTY, CALIFORNIA
PROJECT NUMBER J09CA731501

APPENDIX D

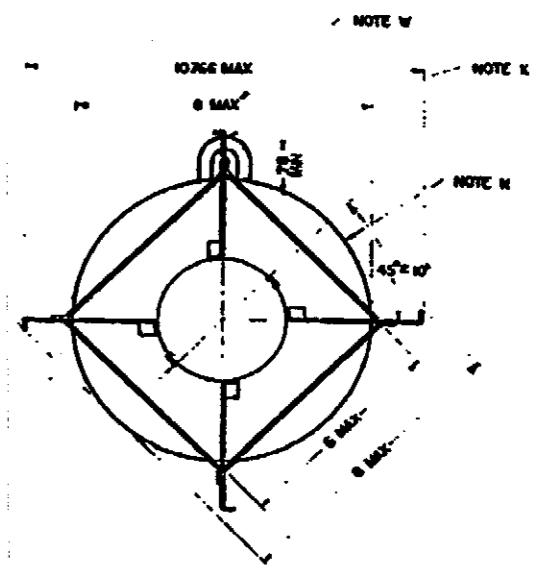
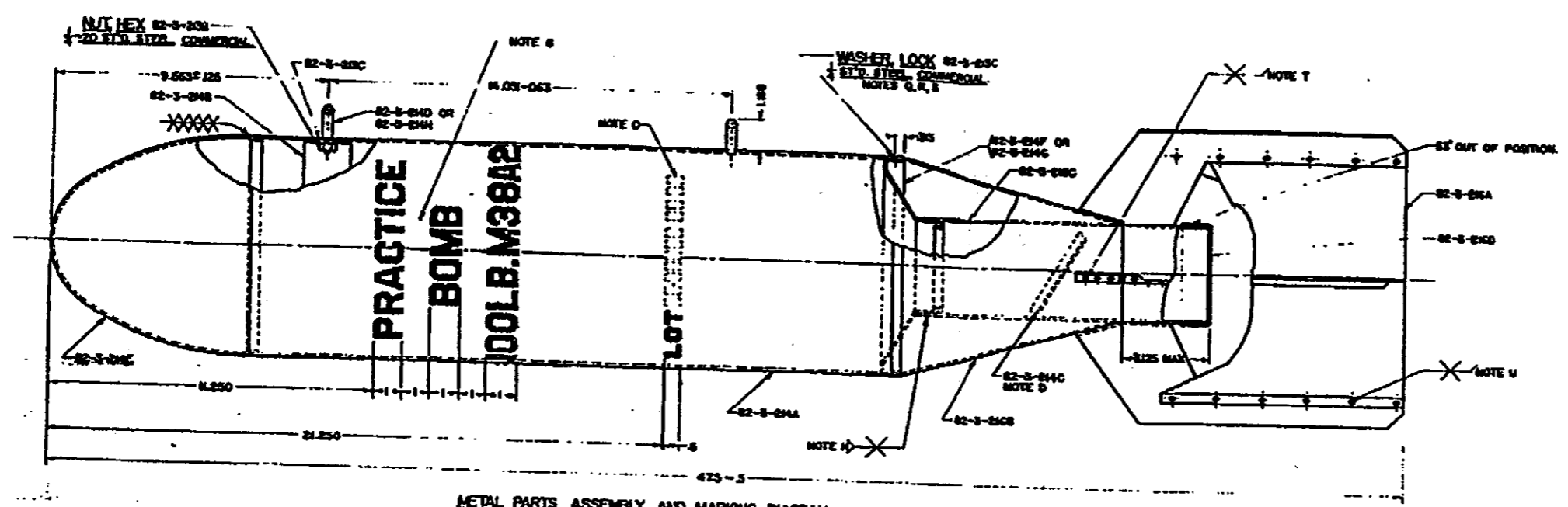
TEXTS/MANUALS

APPENDIX D

TEXTS/MANUALS

Table of Contents

- D-1 Metal Parts Drawing of M38A2 Practice Bomb,
23 August 1955 (B-13)
- D-2 M38A2 Practice Bomb, 3 June 1942 (B-15)



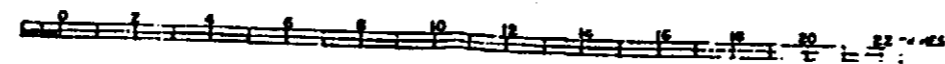
METAL PARTS ASSEMBLY AND MARKING DIAGRAM 82-3-213

- NOTES-
- A- COAT ENTIRE EXTERIOR SURFACE WITH BLUE NO. 2850, ENAMEL. NOTES L, M
 - B- MARK WITH WHITE MARKING INK, NO. 375.
 - C- INSERT LOT NUMBER OF BOMB AND DATE MONTH AND YEAR OF MANUFACTURE.
 - D- PLACE HEAD COVER LOOSELY IN SLEEVE FOR SHIPMENT.
 - E- THE CENTERLINE OF THE COMPLETE TRAIL ASSEMBLY SHALL NOT DEPART FROM THAT OF THE BODY BY MORE THAN 1/8" AS MEASURED AT THE EXTREME ENDS OF THE FIN.
 - F- SLEEVE COVER SHOULD NOT BE SHIPPED OVER PROJECTION TABS.
 - G- LETTERS, FIGURES AND SPACING 1/8" HIGH, PERMISSIBLE.
 - H- 6-3/8" DIA. SPOT WELDS OR 10-3/8" DIA. PROJECTION WELDS, EQUALLY SPACED. (OPTIONAL)
 - I- COAT ENTIRE INTERIOR SURFACE WITH ACID-PROOF BLACK PAINT, TYPE I, NOTE L.
 - L- PREPARE THE EXTERIOR SURFACES IN ACCORDANCE WITH GRADE X, SPEC MIL-C-490, BEFORE COATING. THE INTERIOR SURFACE IS TO BE PREPARED OR CLEANED BY ANY METHOD ACCEPTABLE UNDER SPEC MIL-C-490 BEFORE PAINTING.
 - M- PLATED SUSPENSION LUGS NOT REQUIRED TO BE PAINTED.
 - N- OUT OF ROUND TOLERANCE .025 ON DIAMETER.
 - P- ALTERNATIVE- 24-3/8" DIA. PROJECTION WELDS.
 - Q- WELD HEAD TO BODY WITH 12-3/8" DIA. SPOT WELDS EQUALLY SPACED. NOTE P.
 - R- WELDS TO BE LOCATED APPROX. AT CENTER OF LAP. HEIGHT OF WELD METAL 1/8" MAX AT ANY POINT ON CIRCUMFERENCE.
 - S- WELD CONE TO HEAD WITH 12-3/8" DIA. SPOT WELDS EQUALLY SPACED BETWEEN WELDS JOINING HEAD TO BODY. NOTE P.
 - T- 6-3/8" DIA. SPOT WELDS, EQUALLY SPACED 1/2" FROM EACH END. ALTERNATIVE- 10-3/8" PROJECTION WELDS, EQUALLY SPACED, STAGGERED IN TWO ROWS.
 - U- 6-3/8" DIA. SPOT WELDS OR 10-3/8" PROJECTION WELDS EQUALLY SPACED, 1/2" FROM EACH END. ALTERNATIVE- 6-3/8" PROJECTION WELDS AND 4-3/8" SPOT WELDS.
 - W- THIS DIMENSION DOES NOT INCLUDE HEIGHT OF WELDING METAL.
 - X- END OF FIN BLADE TO BE IN ALIGNMENT WITH CENTER OF SUSPENSION LUG WITHIN 1/8" INCH.

LIST NO.	LIST OF DRAWINGS	DRAWING NUMBER
1	METAL PARTS ASSEMBLY	82-3-213
2	DETAILS	82-3-214
3	DETAILS	82-3-215
4	WIRES, ARMAING, FOR BOMBS.	82-3-214
5	CARTON, PACKING	76-8-42
6	PACKING AND MARKING	20-4-168

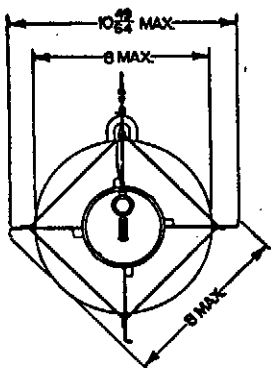
NOTICE: THIS DRAWING SHALL NOT BE USED OR REPRODUCED WITHOUT THE WRITTEN CONSENT OF THE ARMY. IT IS THE PROPERTY OF THE ARMY AND IS LOANED TO YOUR OFFICE. IT AND ITS CONTENTS ARE NOT TO BE DISTRIBUTED OUTSIDE YOUR OFFICE.

WITH 82-3-213A SUPERSEDES 82-3-213 WITH CHANGE SEPTEMBER 23, 1955



	BOMB PRACTICE 100LB, M38A2 METAL PARTS ASSEMBLY AND MARKING DIAGRAM	ORDNANCE CORPS ARMY OF THE ARMY
	82-3-213 F	82-3-213 F

Charge, spotting, assembly, practice bomb, 20-pound, M48 of M48 (black powder).
Fuze, bomb, mechanical time, M107 (nose).
~~Wire, arming, assembly, piece mark 82 3 234G.~~



RA FSD 436

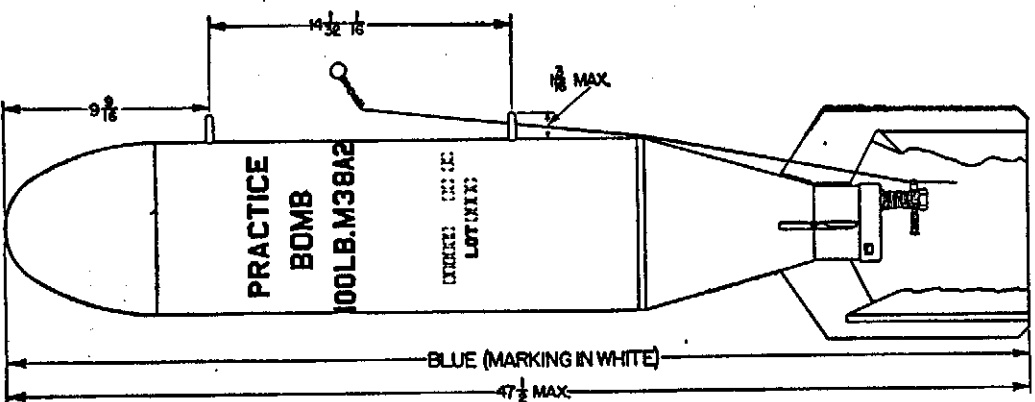
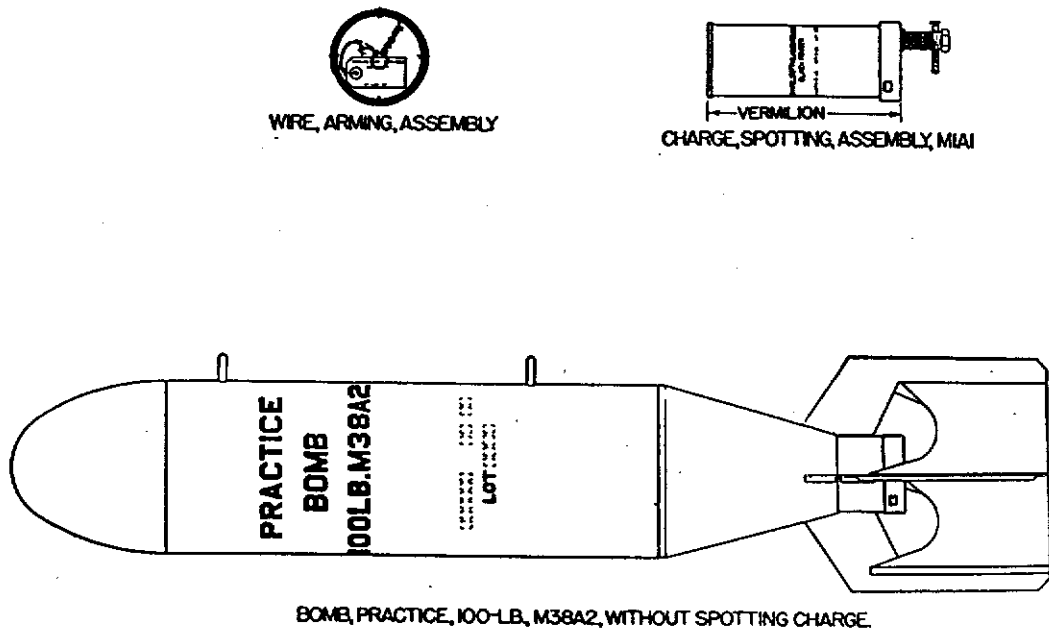


FIGURE 62.—Bomb, practice, 100-pound, M38A2—complete round.

These components are shown as received with packing material removed in figure 61.

b. Description.—A hole in the side of the bomb, covered by a sheet metal disk, is provided for the escape of the smoke for practice charge. The suspension lug on the side of the bomb body is provided for horizontal suspension, while the suspension lug at the tail is provided for vertical suspension. Principal dimensions are shown in figure 60.

c. Assembly and disassembly (fuzing and unfuzing).—The prior examination of components prescribed in paragraph 18 is to insure



RAFSD 435

FIGURE 63.—Components required for complete round No. 543, bomb, practice, 100-pound, M38A2.

that all components at the bomb fuze point are serviceable. The complete round is assembled as follows: After removing the nose closing plug, insert the practice charge and assemble the fuze as prescribed in paragraph 27. The bomb is now an assembled complete round, ready for installation in the bomb rack.

NOTE.—If the bomb is assembled for installation in a horizontal rack, the arming wire must be shortened. For assembly for horizontal suspension, cut the wire to such length that when the swivel loop is placed approximately 2½ inches to the rear of the suspension lug on the side of the bomb, the free end of the wire will protrude from 2 to 3 inches beyond the arming pin. After the bomb is installed in the bomb rack, the cotter pin is withdrawn from the fuze in accordance with instructions on the tag attached thereto. When removing the cotter pin, care will be exercised not to disturb the adjustment of the arming wire. Should it be necessary to disassemble the complete round into

ORDNANCE AND EXPLOSIVES
ARCHIVES SEARCH REPORT
FOR
CLARKS PASS
SAN BERNARDINO COUNTY, CALIFORNIA
PROJECT NUMBER J09CA731501

APPENDIX E
REPORTS/STUDIES

APPENDIX E
REPORTS/STUDIES

Table of Contents

- E-1 Finding and Determination of Eligibility (FDE), 29
September 1999 (B-1)
- E-2 PAE Site Survey Summary Sheet, 1999 (B-1)
- E-3 PAE Site Boundary (B-1)

DEFENSE ENVIRONMENTAL RESTORATION PROGRAM
FORMERLY USED DEFENSE SITES
FINDINGS AND DETERMINATION OF ELIGIBILITY

CLARKS PASS
SAN BERNARDINO COUNTY, CALIFORNIA
SITE NO. J09CA731500

FINDINGS OF FACT

1. The Department of Defense (DOD) is not known to have acquired nor have had any controlling interest in this unnamed site at Clarks Pass. Real estate information was nonspecific and incomplete. The site is estimated to cover 500 acres within Joshua Tree National Park.
2. The site was used for target bomb practice and over 20,000 pounds of munitions artifacts remain on the site. Improvements to the site include oiled concentric rings and a cleared area. No evidence was found to determine which branch of the military, the Navy or Army Air Forces, both active in the adjacent area during the period 1942-1946, used the site.
3. No DOD disposal actions are known to exist. The site has been owned by the Department of the Interior since before WWII. It was managed by the Bureau of Land Management until 1994, when it was transferred to the National Park Service. It is now within a protected wilderness area of Joshua Tree National Park.

DETERMINATION

Based on the foregoing Findings of Fact, it has been determined that this site has been formerly used by the Department of Defense. It is therefore eligible for the Defense Environmental Restoration Program-Formerly Used Defense Sites, established under 10 USC 2701 et seq.

29 Sep 99
Date

Peter T. Madsen
PETER T. MADSEN
Colonel (P), U.S. Army
Commanding

This Page Intentionally Left Blank

PROJECT SUMMARY SHEET
FOR
DERPS-FUDS OE PROJECT NO. J09CA731501
CLARKS PASS
SAN BERNARDINO CALIFORNIA
SITE NO. J09CA731500
27 August 1999

PROJECT DESCRIPTION: This unnamed bombing target is an estimated 500 acre area within Section 20, Township 1 South, Range 14 East, San Bernardino Base and Meridian. It is adjacent to the former California-Arizona Maneuver Area (CAMA) used for combat training during WWII. It is also near bombing ranges used during WWII: the Cadiz Lake Air-to-Ground Gunnery Range and Bombing targets; Sheep Hole Mountain Sonic Bombing targets. That it was used as a bombing target is suggested by the finding of oiled concentric rings and an estimated 20,000 pounds of bomb debris scattered throughout the site surface. The bomb fragments were identified by the Marine Corps Air Ground Combat Center at Twentynine Palms as MK15 MOD4 practice 100 pound sand filled bombs.

PROJECT ELIGIBILITY: The site is an undocumented bombing target, used during the approximate period of WWII, or shortly thereafter. Information on the site was nonspecific and incomplete. Although it could not be ascertained with which military activity the site was associated, the Naval Auxiliary Air Station at Twentynine Palms or Army Air Forces at CAMA, the finding of over 300 bomb fragments within 500 acres of the site, indicates Department of Defense use. Military improvements to the site include oiled concentric rings, target wooden stakes, and a cleared 500 foot diameter circular area.

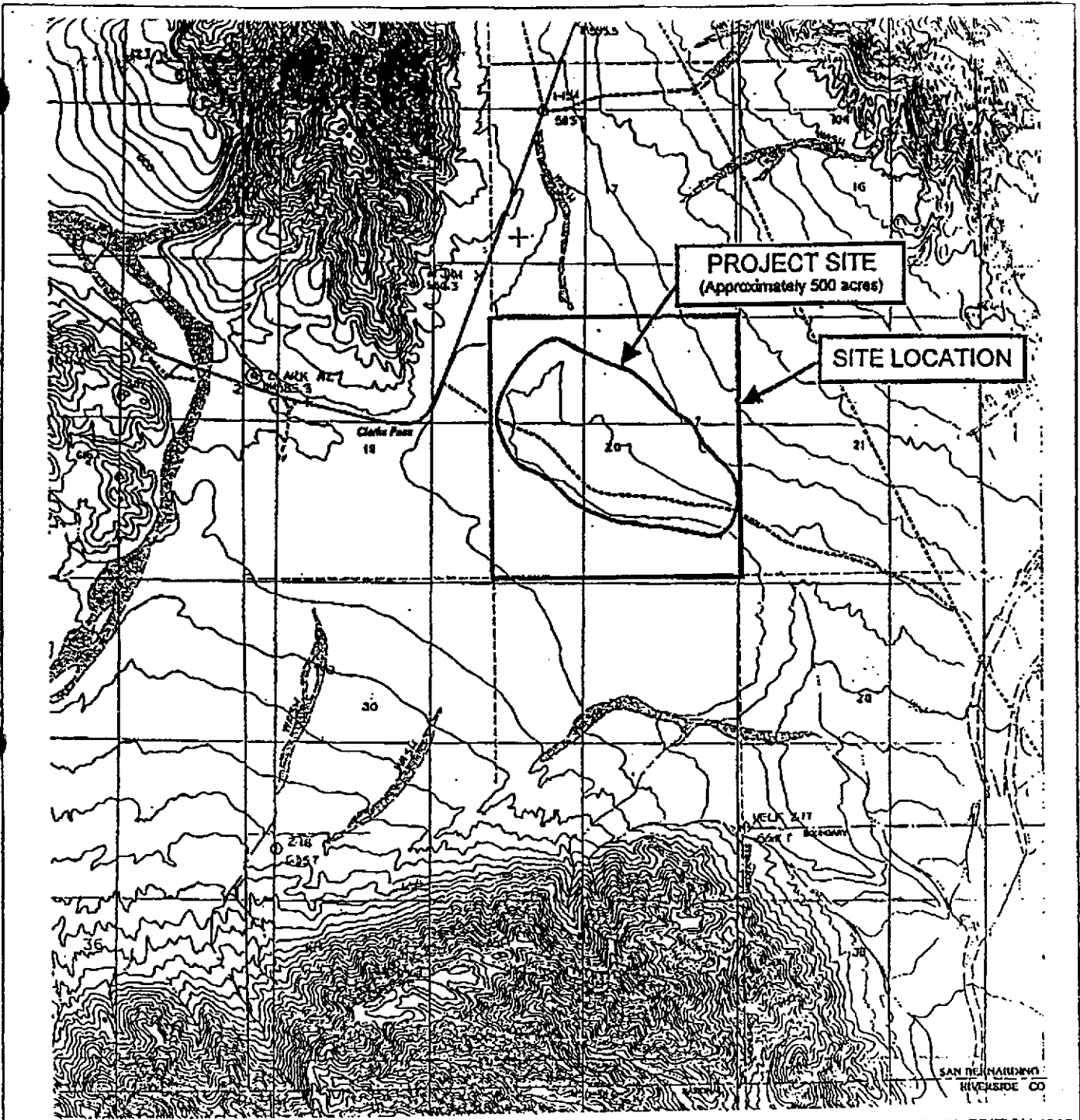
POLICY CONSIDERATIONS: No policy considerations exist which would prohibit proposal of this project.

PROPOSED PROJECT: Recommend that the Huntsville Engineering and Support Center make a determination regarding further investigation of this former bombing target.

RAC FORM: Attached.

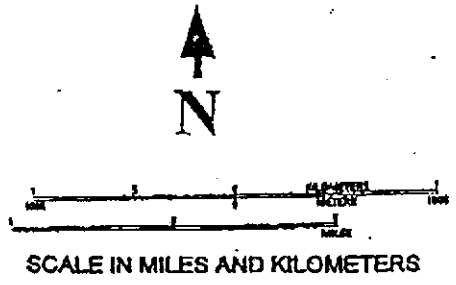
DISTRICT POC: Request CEHNC inform Mr. Jeffery B. Armentrout, Los Angeles District, at (213) 452-3720 when a determination is made regarding project status.

This Page Intentionally Left Blank



SECTION 20, TOWNSHIP 1 SOUTH, RANGE 14 EAST,
SAN BERNARDINO BASE AND MERIDIAN

U.S.G.S. TOPO, 7.5', CLARKS PASS, CALIFORNIA, PROVISIONAL EDITION 1985



SAIC
Science Applications
International Corporation
An Employee-Owned Company

OE PROJECT MAP CLARKS PASS J09CA731501 SAN BERNARDINO COUNTY, CA		
PROJECT NO. 01-255-04-1549		
DRAWN BY JP	CHECKED BY JC	DATE 08-99

This Page Intentionally Left Blank



United States Department of the Interior

NATIONAL PARK SERVICE

Joshua Tree National Park
74485 National Park Drive
Twentynine Palms, California 92277-3597

IN REPLY REFER TO:

A6419

January 14, 1998

Director
Operations and Training
Marine Corps Air-Ground Combat Center
MCB Twentynine Palms, California 92277

Dear Sir:

National Park Service and Bureau of Land Management personnel have recently discovered scrap metal cylindrical objects that have an accordion shape, presumably from ground impact, within the park boundary. We would like to request a search of this area by your Explosives Ordinance Disposal unit to determine if there are any explosive ordinance located at this site. The site is located approximately forty miles east of Twentynine Palms, on State Route 62, and south approximately one half mile, at the Clark's Pass curve. Our best information on this site is that it was used as a WWII dummy bombing target range.

If approved, we would like to schedule this search at your earliest convenience. The Park contact for this action is Chief Ranger, Judy Bartzatt. She may be reached at (760) 367-5540. Thank you for your assistance.

Sincerely,

JQB
CHIEF
367-5540 - *POE**

Ernest Quintana
Ernest Quintana
Superintendent

cc: Chief Ranger

*Lt Col Nelson.
Pass to EOD. Have already
them make contact. I've already
Responded that we will support.
S/F (TMZ)*

This Page Intentionally Left Blank

ORDNANCE AND EXPLOSIVES
ARCHIVES SEARCH REPORT
FOR
CLARKS PASS
SAN BERNARDINO COUNTY, CALIFORNIA
PROJECT NUMBER J09CA731501

APPENDIX F

LETTERS/MEMORANDUMS/MISCELLANEOUS ITEMS

APPENDIX F

LETTERS/MEMORANDUMS/MISCELLANEOUS ITEMS

Table of Contents

- F-1 Joshua Tree National Park requests EOD assistance, 14 January 1998 (B-8)
- F-2 EOD Incident Report, 22 January 1998 (B-9)
- F-3 Memorandum describing unauthorized bomb targets, 31 July 1947 (B-10).



United States Department of the Interior

NATIONAL PARK SERVICE

Joshua Tree National Park
74485 National Park Drive
Twentynine Palms, California 92277-3597

IN REPLY REFER TO:

A6419

January 14, 1998

Director
Operations and Training
Marine Corps Air-Ground Combat Center
MCB Twentynine Palms, California 92277

Dear Sir:

National Park Service and Bureau of Land Management personnel have recently discovered scrap metal cylindrical objects that have an accordion shape, presumably from ground impact, within the park boundary. We would like to request a search of this area by your Explosives Ordinance Disposal unit to determine if there are any explosive ordinance located at this site. The site is located approximately forty miles east of Twentynine Palms, on State Route 62, and south approximately one half mile, at the Clark's Pass curve. Our best information on this site is that it was used as a WWII dummy bombing target range.

If approved, we would like to schedule this search at your earliest convenience. The Park contact for this action is Chief Ranger, Judy Bartzall. She may be reached at (760) 367-5540. Thank you for your assistance.

Sincerely,

JTB
CHIEF
367-5543 *POE **

Ernest Quintana
Ernest Quintana
Superintendent

cc: Chief Ranger

*Lt Col Nelson. Pass to EDD. Have already
them make contact. I've already
responded that we will support.
S/F (Tm 2)*

This Page Intentionally Left Blank



United States Marine Corps
Explosive Ordnance Disposal Unit
Operations And Training Directorate
Marine Corps Air Ground Combat Center (MCAGCC)
Twentynine Palms, CA 92278

RUC Code: 35010

Call ID: 24 Call Date: 22/1/98 Call Time: 00:00 Received By: BAILEY

Operator: CHIEF RANGE BARTZATT POC: RANGER OHLES
Case No.: DSN: Phone No.: 367-5543 DSN:
Unit: JTPS

Provided To: OTHER FEDERAL AGENCY Type Support Provided: EOD Technical Assistance
Location: EST EOD ID METAL FOUND IN JOSHUA TREE MONUMENT AREA

Out: 28/01/1998 Date In: 28/01/1998 Total Man Hours: 24.0
In: 06:45 Time In: 12:50 Total Miles Drive: 160.0

Personnel Data: MCCOY No. Responding: 4 SANBORN
SAIKI

Taken/Remarks: (Who, What, Why, and Where)
RANGER OHLFS AT PARK HQ AT 0700, DROVE TO CLARKS PASS, AND FOLLOWED RANGER INTO AREA. FOUND APPROXIMATELY 20,000 LBS OF ORDNANCE RESIDUE FROM OLD SAND FILLED PRACTICE BOMBS (MK15 MOD 4 100LB). CHECKED UP ITEMS NEAR THE ROAD UNTIL HUMMER WAS FULL, 500 LBS. SCOUTED THE AREA OF CONTAMINATION FOUND AREA TO BE 1500 SQ METERS. IN THIS AREA WE FOUND NO EVIDENCE OF HIGH EXPLOSIVE ROUNDS. THE RESIDUE FROM SAND FILLED PRACTICE BOMBS. RANGER OHLFS SAID DUE TO THE AREA BEING AN HAZARDOUSNESS AREA THE IMPACT OF A FULL CLEAN-UP MUST BE EVALUATED AND APPROVED THROUGH HIS SUPERIOR.

IF THE OPERATION GOES IT WILL TAKE TWO DUMP TRUCKS AND 50 WORKERS (EOD TO WORKERS 1-5) ONE TRUCKER TO PICK UP RESIDUE AND TRANSPORT THIS TO THE DUMP. THE RESIDUE CAN BE DUG UP BY SHOVEL AND LOADED BY HAND TO THE HUMMER.

ICN	Item	UNITS	60 Series EOD Pubs Used: 60B-2-2-11-8
-----	------	-------	--

ICN	Item	Units	Quantity	Lot No.
-----	------	-------	----------	---------

ICN	Item	Quantity	TNT EQ	Net TNT EQ
-----	------	----------	--------	------------

Total Ordnance Destroyed:
Total TNT EQ Destroyed: lbs.

Ordnance Residue Removed During This Call: 0.00 lbs.

Signature: RISMELO Title: Ops Chief Date: 04/03/1998

This Page Intentionally Left Blank

691.1 (Cádiz Lake, Calif.)
PSLMR

Subject: RE-D 4595 A - Cádiz Lake,
Calif. (Basic: 12 March
1947.)

9th Ind.

Los Angeles District, Corps of Engineers, War Department, 31 July 1947

TO: Commanding Officer, March Field, Riverside, California

1. Information requested in paragraph 1 of preceding indorsement is, as per paragraph 3a of W. D. Circular #2, required to be furnished to the Division Engineer. This office does not have the specific information needed to declare these areas surplus so that they may be dedudded as required, Government property disposed of, etc.; and has no authorized method of obtaining this information except through the agency that used the property.

2. That agency was undoubtedly an element of the 4th Air Force formerly stationed at March Field. It is noted that so-called Bristol-Cádiz Lake Bombing and Gunnery Range was transferred to the Tactical Air Command by General Order #7, 5 April 1946. However, the War Department had no rights of any kind in this area, and it is not clear what was transferred. The only real estate records that are known to exist are various requests for acquisition of portions of the area used. Only one of these requests was authorized, and it was withdrawn before being acted upon. These various requests did not cover all areas used for practice bombing and gunnery and are therefore inadequate to determine the areas that may need dedudding. This could only be ascertained from records of training missions or a reconstruction of the situation by personnel engaged in such training.

3. This question is essentially one of clearing of an unauthorized occupancy, in which your command was not involved until after the fact. Aside from requests for acquisition, the only information this office has is based on hearsay. However, many reports have been received of practice bombing outside of the requested areas, as well as the acknowledged bombing within them. Particularly mentioned, for instance, has been an area lying along the N. E. base of the Sheep Hole Mountains.

4. It is still believed that all statements made in 1st Indorsement are correct and proper.

FOR THE DISTRICT ENGINEER:

3 Incln.
Incln 1 & 2 - n/c
Incl 3 w/d

HAROLD E. SPICKARD
Chief, Real Estate Division

This Page Intentionally Left Blank

ORDNANCE AND EXPLOSIVES
ARCHIVES SEARCH REPORT
FOR
CLARKS PASS
SAN BERNARDINO COUNTY, CALIFORNIA
PROJECT NUMBER J09CA731501

APPENDIX G

REAL ESTATE DOCUMENTS

(This Section Not Used)

This Page Intentionally Left Blank

ORDNANCE AND EXPLOSIVES
ARCHIVES SEARCH REPORT
FOR
CLARKS PASS
SAN BERNARDINO COUNTY, CALIFORNIA
PROJECT NUMBER J09CA731501

APPENDIX H

NEWSPAPERS/JOURNALS

(This Section Not Used)

This Page Intentionally Left Blank

ORDNANCE AND EXPLOSIVES
ARCHIVES SEARCH REPORT
FOR
CLARKS PASS
SAN BERNARDINO COUNTY, CALIFORNIA
PROJECT NUMBER J09CA731501

APPENDIX I

INTERVIEWS

APPENDIX I

INTERVIEWS

Table of Contents

I-1 Interview with Mr. Jeff Ohlfs, 15 February 2001

CONVERSATION RECORD	TIME 0945 CDT	DATE 15 February 2001
----------------------------	-------------------------	---------------------------------

TYPE		
<input type="checkbox"/> VISIT	<input type="checkbox"/> CONFERENCE	<input checked="" type="checkbox"/> TELEPHONE
		<input type="checkbox"/> INCOMING
		<input checked="" type="checkbox"/> OUTGOING
NAME OF PERSON CONTACT WITH Jeff Ohlfs	ORGANIZATION Joshua Tree National Park	TELEPHONE NO. (760) 367-5548

SUBJECT Clarks Pass

SUMMARY


Mr. Ohlfs was contacted because he was the park ranger that discovered the bomb target in 1998 and is also the president of the local historical society. When queried if anything other than practice bomb debris was found on the site, he replied that he was unfamiliar with ordnance items.

He said there were two areas on the site, one with concentric rings and a cleared area to the east of the rings. He said the EOD unit from Twentynine Palms was more than willing to cleanup the site but they were told not to.

When queried about the natural resources on the site, he said that potentially the Desert Tortoise could be on the site. He said that the site had a rather thick stand of mesquite, so he imagined that there is a local water table fairly close to the surface.

ACTION REQUIRED

ACTION TAKEN

NAME OF PERSON DOCUMENTING CONVERSATION George Ofslager	ORGANIZATION CEMVR-ED-DO	TELEPHONE NUMBER (309) 782-3216
SIGNATURE 	TITLE QA Spec (Ammo)	DATE 15 February 2001

This Page Intentionally Left Blank

ORDNANCE AND EXPLOSIVES
ARCHIVES SEARCH REPORT
FOR
CLARKS PASS
SAN BERNARDINO COUNTY, CALIFORNIA
PROJECT NUMBER J09CA731501

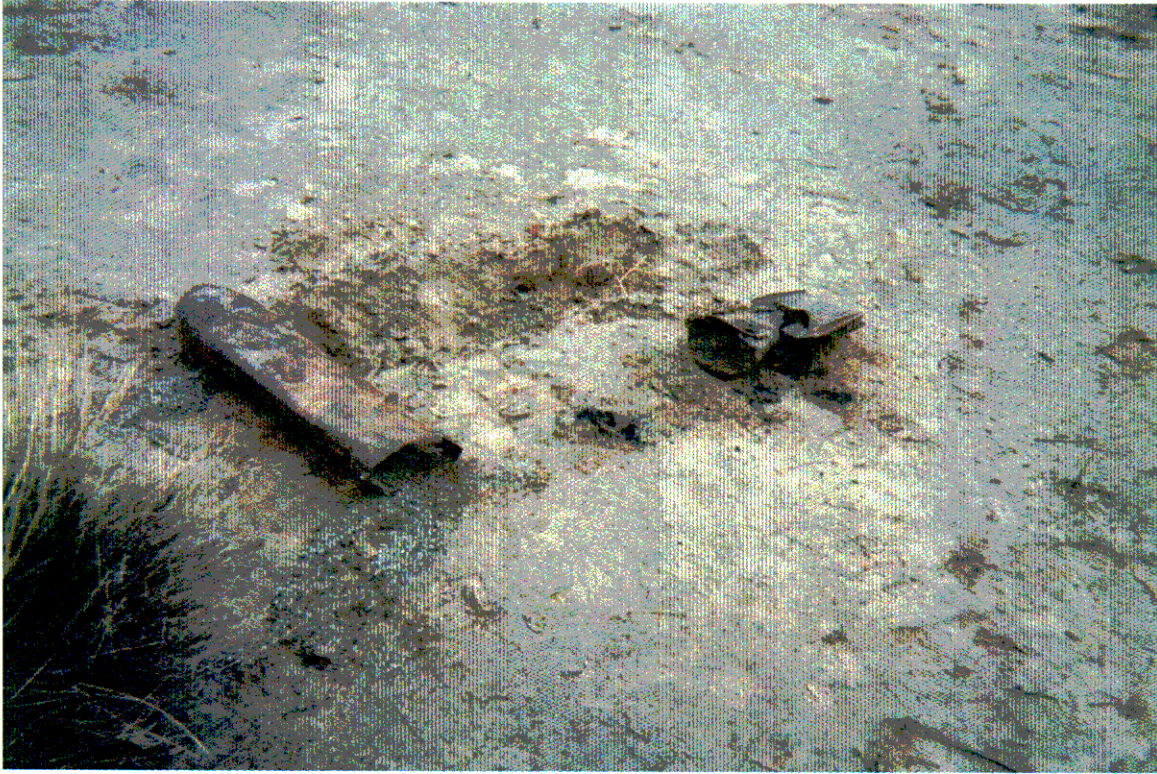
APPENDIX J

PRESENT SITE PHOTOGRAPHS

APPENDIX J
PRESENT SITE PHOTOGRAPHS

Table of Contents

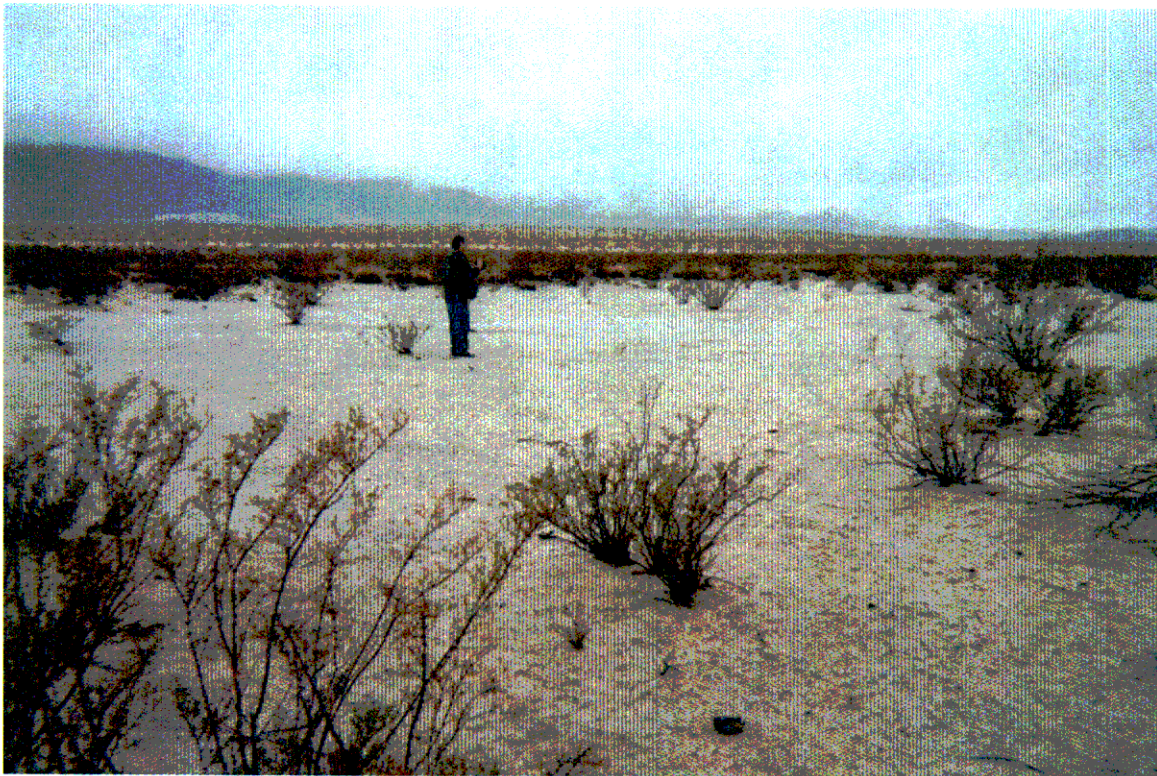
- J-1 . Practice Bomb Recently Excavated
(Area A: Impact Area)
- J-2 Tail Fin Attached to Bomb Body (Area A: Impact Area)
- J-3 Possible Tactical Shape (Area A: Impact Area)
- J-4 Bomb Body Debris (Area B: Buffer Zone)



J-1 Practice Bomb Recently Excavated (Area A: Impact Area)



J-2 Tail Fin Attached to Bomb Body (Area A: Impact Area)



J-3 Possible Tactical Shape (Area A: Impact Area)



J-4 Bomb Body Debris (Area B: Buffer Zone)

ORDNANCE AND EXPLOSIVES
ARCHIVES SEARCH REPORT
FOR
CLARKS PASS
SAN BERNARDINO COUNTY, CALIFORNIA
PROJECT NUMBER J09CA731501

APPENDIX K

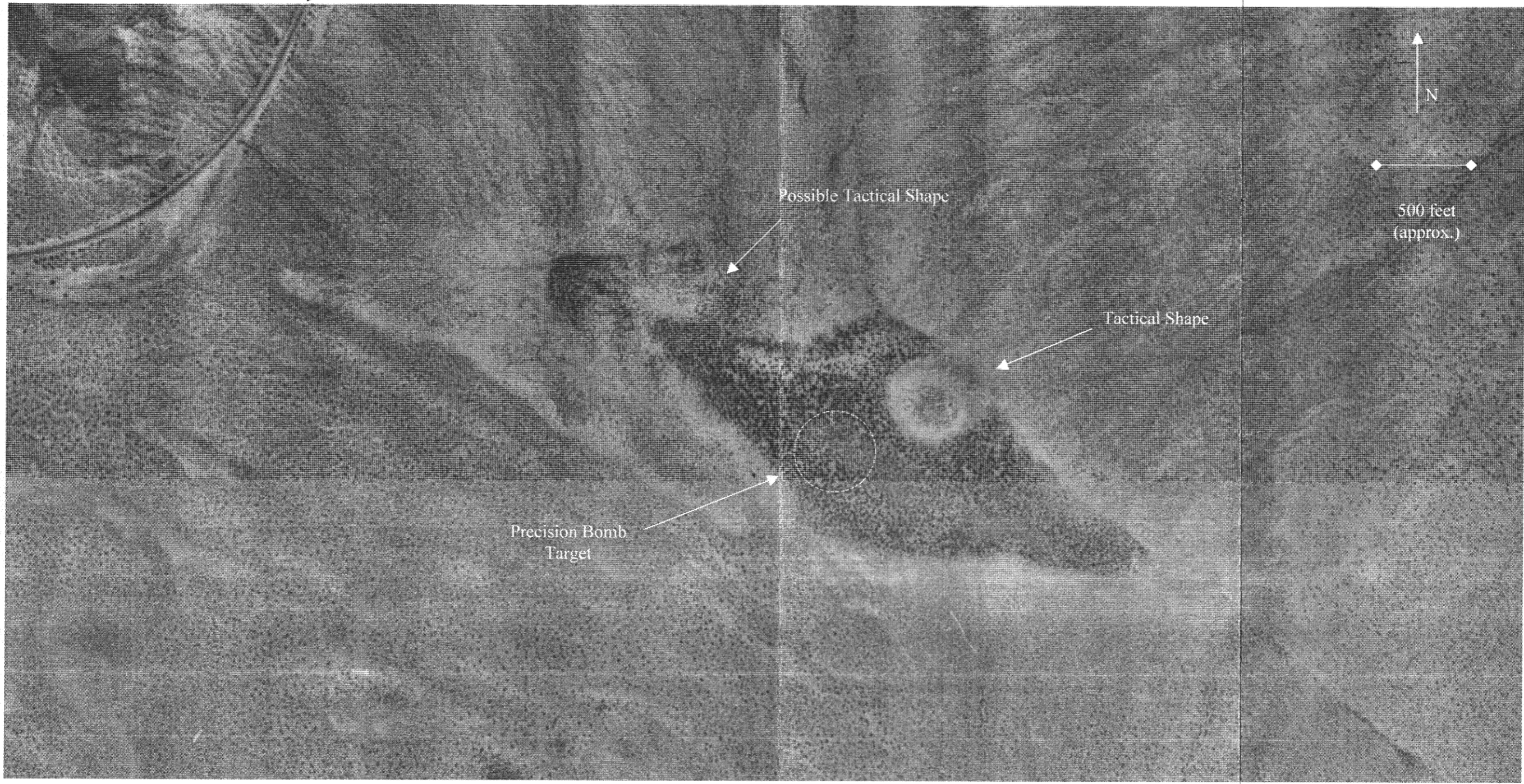
HISTORICAL PHOTOGRAPHS

APPENDIX K
HISTORICAL PHOTOGRAPHS

Table of Contents

K-1 Aerial Photograph, 28 September 1995 (B-11).

Highway 62



ORDNANCE AND EXPLOSIVES
ARCHIVES SEARCH REPORT
FOR
CLARKS PASS
SAN BERNARDINO COUNTY, CALIFORNIA
PROJECT NUMBER J09CA731501

APPENDIX L

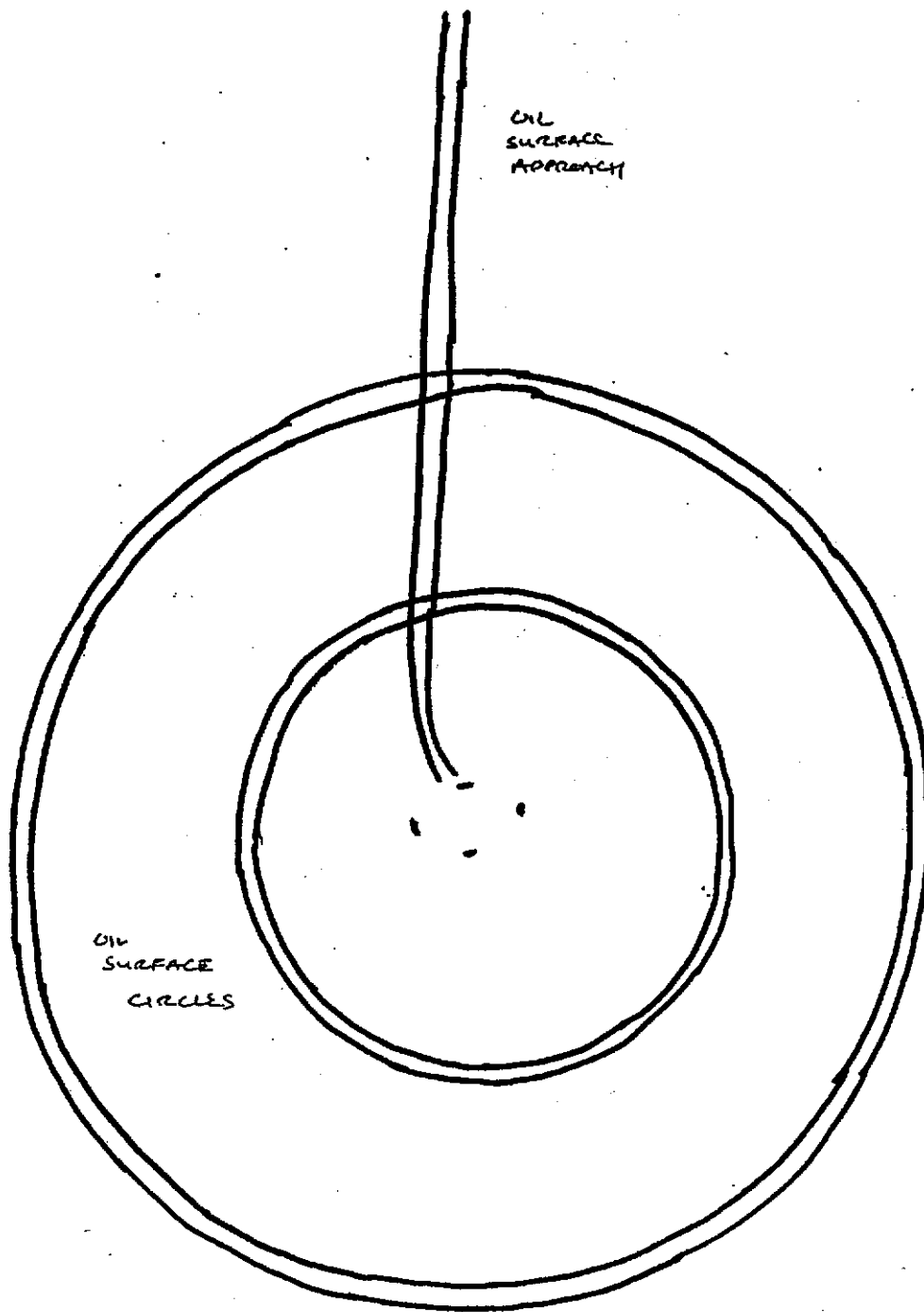
REFERENCE MAPS/DRAWINGS

APPENDIX L

REFERENCE MAPS/DRAWINGS

Table of Contents

L-1 Sketch of Bomb Target, circa 1998 (B-22)



↑
N
APPROX.

OIL
SURFACE
APPROACH

OIL
SURFACE
CIRCLES

500 DIA
CLEARANCE
CIRCLE →
6-35-155E x
37-70-884A ± 100

This Page Intentionally Left Blank

ORDNANCE AND EXPLOSIVES
ARCHIVES SEARCH REPORT
FOR
CLARKS PASS
SAN BERNARDINO COUNTY, CALIFORNIA
PROJECT NUMBER J09CA731501

APPENDIX M

ARCHIVE SEARCH REPORT CORRESPONDENCE

(This section is not used)

This Page Intentionally Left Blank

ORDNANCE AND EXPLOSIVES
ARCHIVES SEARCH REPORT
FOR
CLARKS PASS
SAN BERNARDINO COUNTY, CALIFORNIA
PROJECT NUMBER J09CA731501

APPENDIX N

PROJECT AREA BIBLIOGRAPHY

This Page Intentionally Left Blank

CLARKS PASS
SAN BERNARDINO COUNTY, CALIFORNIA
PROJECT NUMBER J09CA731501

PROJECT AREA BIBLIOGRAPHY

Document ID	Project Area(s)	OE Classification	Document Name	Document Date	Document Source	Description and Comments
1	A	Confirmed	Interview with Jeff Ohlfs, Park Ranger	15-Feb-01	Interview	I-1: Reliable accounts of OE recoveries.
2	A	Confirmed	Photographs	26-Feb-01	Site Visit	J-1: Expended M38A2 practice bomb.
3	A	Confirmed	Photographs	26-Feb-01	Site Visit	J-2: Expended M38A2 practice bomb.
4	A	Confirmed	Aerial photograph	28-Sep-95	USDA	K-1: Targets are visible in photograph.
5	A	Confirmed	Sketch of bomb target	circa 1998	Los Angeles District	L-1: Concentric circles typical of a precision bomb target.

This Page Intentionally Left Blank

ORDNANCE AND EXPLOSIVES
ARCHIVES SEARCH REPORT
FOR
CLARKS PASS
SAN BERNARDINO COUNTY, CALIFORNIA
PROJECT NUMBER J09CA731501

APPENDIX O

REPORT DISTRIBUTION LIST

This Page Intentionally Left Blank

APPENDIX O

REPORT DISTRIBUTION LIST

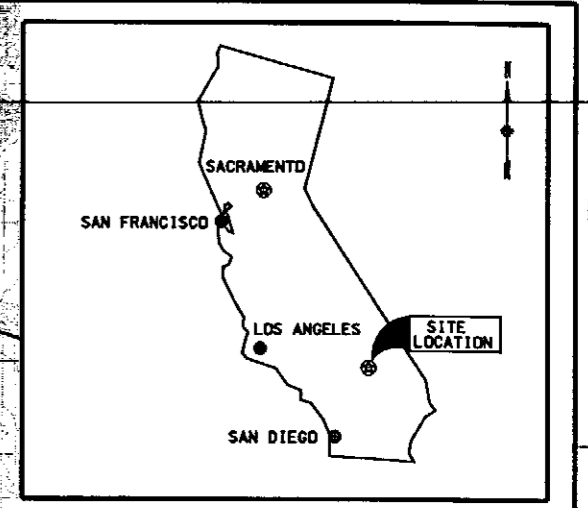
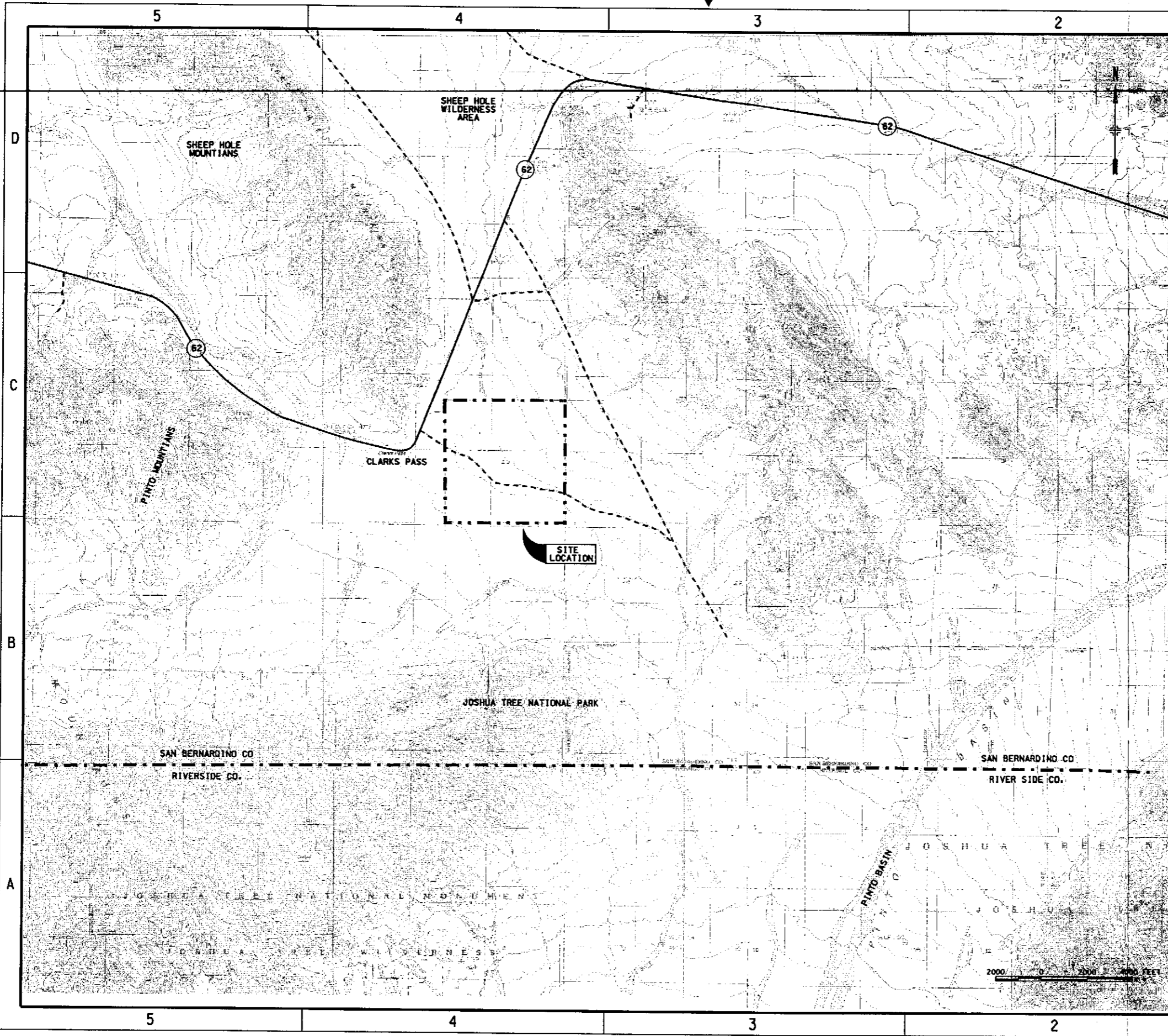
	I	II	III
Commander, U.S. Army Corps of Engineers, Engineering and Support Center, Huntsville ATTN: CEHNC-ED-SY (Mardis) P.O. Box 1600 Huntsville, Alabama 35807-4301	2	-	-
Director, Defense Ammunition Center ATTN: SIOAC-ESL 1C Tree Road, Building 35 McAlester, Oklahoma 74501	2	-	-
Commander, U.S. Army Corps of Engineers, Los Angeles District ATTN: CESPL-PM-M (Godard) 911 Wilshire Blvd. Los Angeles, CA 90017	2	-	-
Commander, U.S. Army Engineer District, Rock Island P.O. Box 2004 Rock Island, IL 61201			
CEMVR-ED			1
-ED-D			1
-ED-DO	3		
I - Final Report			
II - Findings Report			
III - Routed Final Report			

This Page Intentionally Left Blank

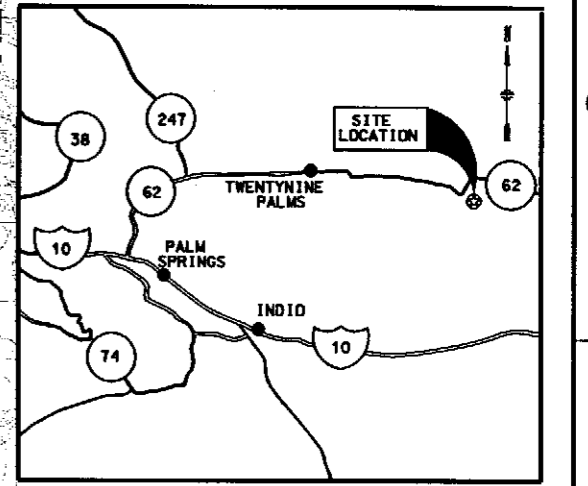
ORDNANCE AND EXPLOSIVES
ARCHIVES SEARCH REPORT
FOR
CLARKS PASS
SAN BERNARDINO COUNTY, CALIFORNIA
PROJECT NUMBER J09CA731501

REPORT PLATES

This Page Intentionally Left Blank



STATE MAP OF CALIFORNIA



VICINITY MAP

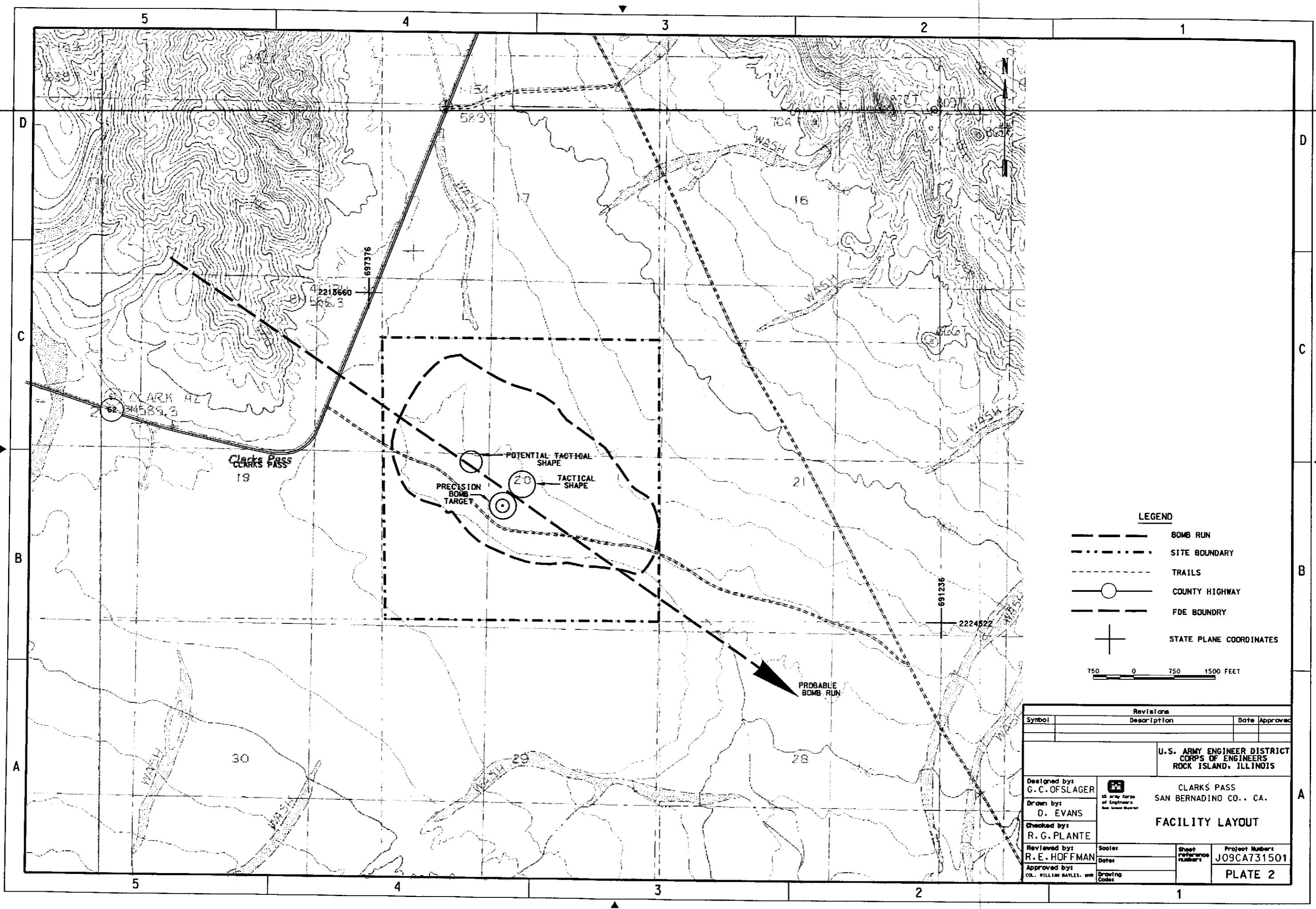
LEGEND

- SITE BOUNDARY
- TRAILS
- STATE HIGHWAY
- COUNTY BOUNDARY
- COUNTY HIGHWAY

Revisions			
Symbol	Description	Date	Approved
U.S. ARMY ENGINEER DISTRICT CORPS OF ENGINEERS ROCK ISLAND, ILLINOIS			
Designed by G. C. OFSLAGER		CLARKS PASS SAN BERNADINO CO., CA.	
Drawn by D. EVANS			
Checked by R. E. HOFFMAN		SITE MAP	
Reviewed by R. E. HOFFMAN			
Approved by COL. WILLIAM BAYLES, MAJ		Scale: Date: Drawing Codes:	Sheet reference number: Project Number: J09CA731500 PLATE 1

26-MAR-2001 13:07
e:\sp4044\SP404\PLATE1.dgn

19-APR-2001 14:42
 e:\wp40409\404PLATE2.dgn

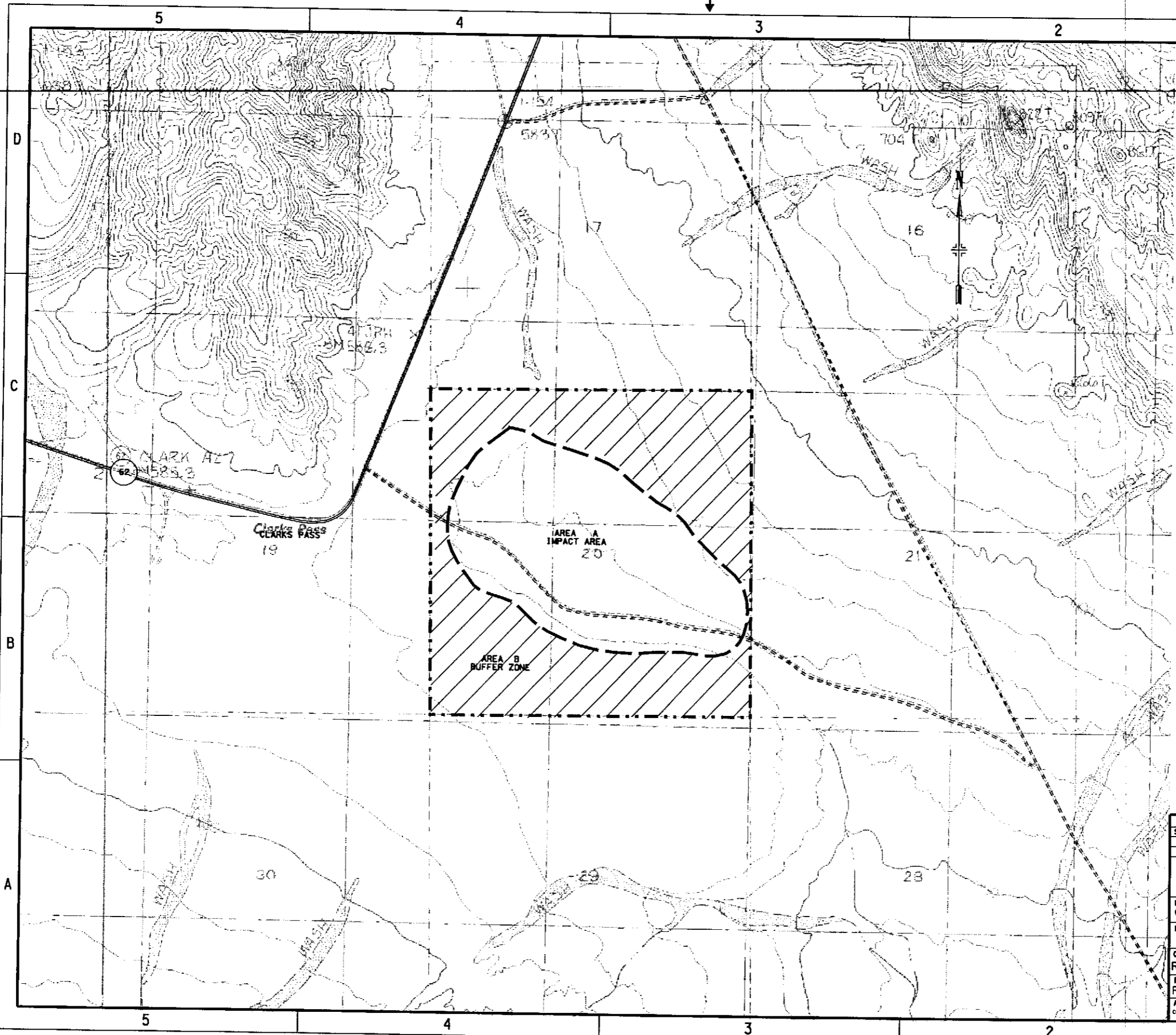


LEGEND

- BOMB RUN
- SITE BOUNDARY
- TRAILS
- COUNTY HIGHWAY
- FDE BOUNDARY
- STATE PLANE COORDINATES

750 0 750 1500 FEET

Revisions		Date	Approved
Symbol	Description		
U.S. ARMY ENGINEER DISTRICT CORPS OF ENGINEERS ROCK ISLAND, ILLINOIS			
Designed by: G. C. OFSLAGER	 U.S. Army Corps of Engineers Rock Island District	CLARK'S PASS SAN BERNADINO CO., CA.	
Drawn by: D. EVANS		FACILITY LAYOUT	
Checked by: R. G. PLANTE	Scale:	Sheet Reference Number:	Project Number: J09CA731501
Reviewed by: R. E. HOFFMAN	Date:	PLATE 2	
Approved by: COL. WILLIAM BAYLES, INR	Drawing Code:		



PROJECT AREA				
AREA	FORMER USE	DE PRESENCE	ACREAGE	
	A	IMPACT AREA	CONFIRMED	273
	B	BUFFER ZONE	POTENTIAL	367
TOTAL ACERAGE			640	

LEGEND

- AREA B BUFFER ZONE
- TRAILS
- COUNTY HIGHWAY

750 0 750 1500 FEET

Revisions			
Symbol	Description	Date	Approved

**U.S. ARMY ENGINEER DISTRICT
CORPS OF ENGINEERS
ROCK ISLAND, ILLINOIS**

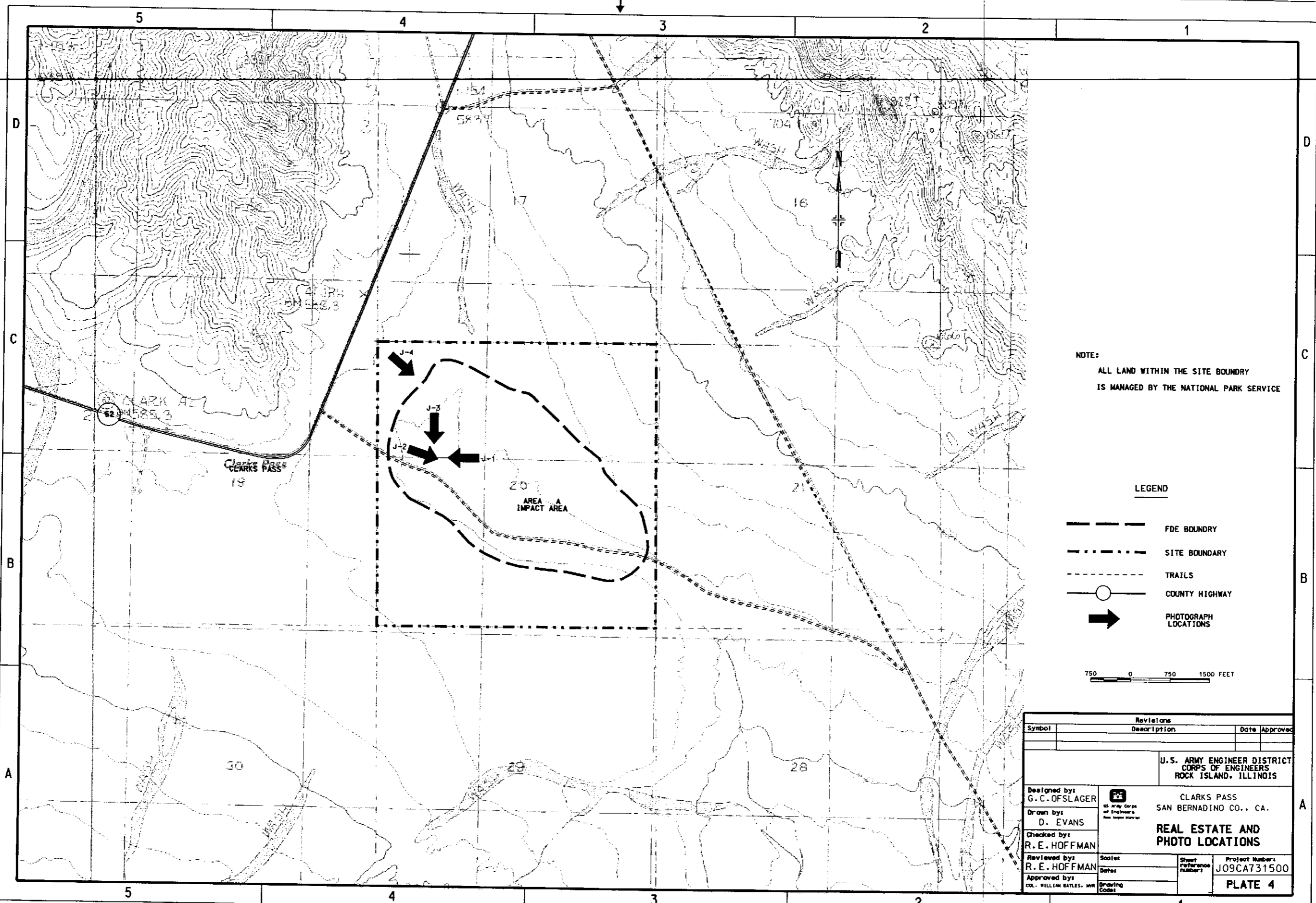
Designed by: G. C. OFSLAGER
 Drawn by: D. EVANS
 Checked by: R. E. HOFFMAN
 Reviewed by: R. E. HOFFMAN
 Approved by: COL. WILLIAM BAYLES, AMR

**CLARKS PASS
SAN BERNADINO CO., CA.
DE PROJECT AREAS**

Scales: _____
 Dates: _____
 Drawing Codes: _____

Sheet Reference Number: _____
 Project Number: J09CA731500
PLATE 3

26-MAR-2001 13:13
 e:\ep404801\04PLATE3.dgn



NOTE:
 ALL LAND WITHIN THE SITE BOUNDARY
 IS MANAGED BY THE NATIONAL PARK SERVICE

LEGEND

- FDE BOUNDARY
- · - · - SITE BOUNDARY
- - - TRAILS
- COUNTY HIGHWAY
- ➔ PHOTOGRAPH LOCATIONS

750 0 750 1500 FEET

26-MAR-2001 14:44
 61*3D-40-40P-40PLATE4.dgn

Revisions		Date	Approved
Symbol	Description		
U.S. ARMY ENGINEER DISTRICT CORPS OF ENGINEERS ROCK ISLAND, ILLINOIS			
Designed by G. C. OFSLAGER		CLARKS PASS SAN BERNADINO CO., CA.	
Drawn by D. EVANS		REAL ESTATE AND PHOTO LOCATIONS	
Checked by R. E. HOFFMAN	Reviewed by R. E. HOFFMAN	Scale: Date:	Project Number: J09CA731500
Approved by COL. WILHELM BAYLES, USMC	Drawing Code:		PLATE 4