

REPORT OF COMPLETED WORKS -- SEACOAST FORTIFICATIONS
(Gun and Mortar Batteries)

HARBOR

~~COAST~~ DEFENSES OF..... San Francisco.....
FORT..... Funston.....
BATTERY... 3-inch anti-aircraft guns.....
No. of guns 2 Caliber 3" Carriage Fixed

Form 1 Corrected to Aug. 1, 1929.

Battery commenced	1920 *	Source of electric current	Storage battery	<i>AC comm. power</i>
Battery completed	1925 *			
Date of transfer	—			
Material of construction	Concrete	Max. kw. required for lights	1/4 K.W.	
Portland or Rosendale cement	Portland	Max. kw. required for motors	None	
Cost to date of transfer	\$1,092.86			
Connected to water supply	No	Present condition of battery	Good	
Connected to sewer	No	Rooms wet or dry	No rooms	
Type of latrine	None			
Type of data transmission	None	How ventilated	No ventilation	
Trunnion elevation in battery	#1-131.0	Remarks-		
Datum plane	#2-126.9			Gun plugs built in 1920; baserings set in 1925.
	M.L.L.W.			

ARMAMENT.

Emplacement or mortar No.	Guns or Mortars				Carriages						
	Cal.	length	model	Serial No.	Manufacturer	mounted	Type	model	Serial No.	Manufacturer	Motor
1	3"	174.65"	1917MI	#97	Watervliet Ars.	mounted	A.A.	1917	#125	Watertown Ars.	None
2	3"	174.65"	1917MI	#116	" "	"	A.A.	1917	#157	" "	"
3											
4											
5											
6											
7											
8											

HOISTS.

Emplacement Number	Type	Delivery	Motor							Remodeled for long points.
			Serial No.	Maker	H.P.	Volts	RPM	Type of Control	Date of transfer	
1										
2										
3										
4										

No hoists required.

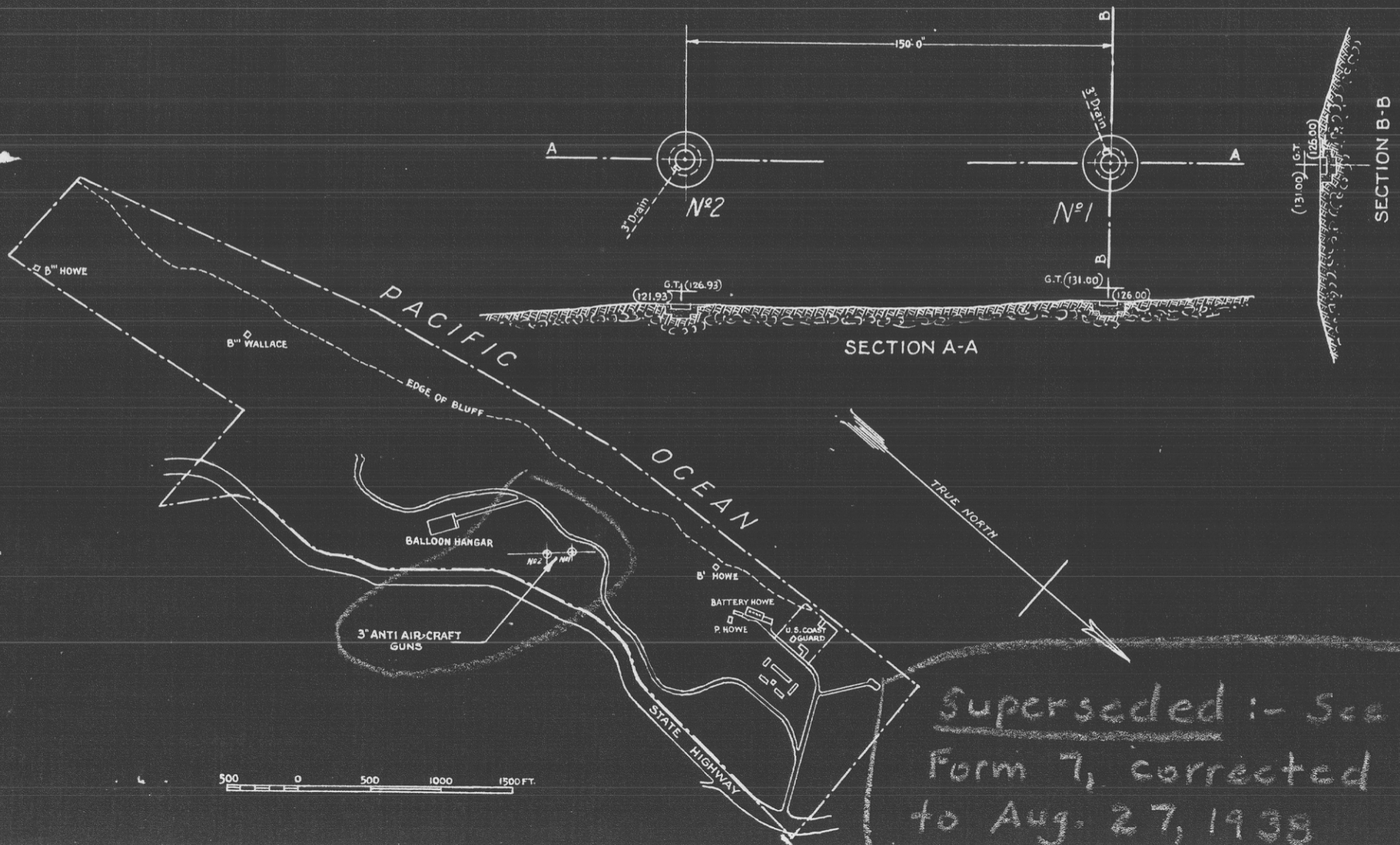
AC commercial power to be supplied to this battery. 675.1 (San Fran.) CM 1319 7/16/42

REPORT OF COMPLETED WORKS - SEACOAST FORTIFICATIONS
(BATTERY PLAN)

HARBOR DEFENSES OF SAN FRANCISCO, CAL.
FORT FUNSTON,
ANTI AIR-CRAFT BATTERY
N^o OF GUNS 2: CALIBER 3^{IN}: MODEL 1917 M.I.

CORRECTED TO AUG. 1, 1929

FORM-7



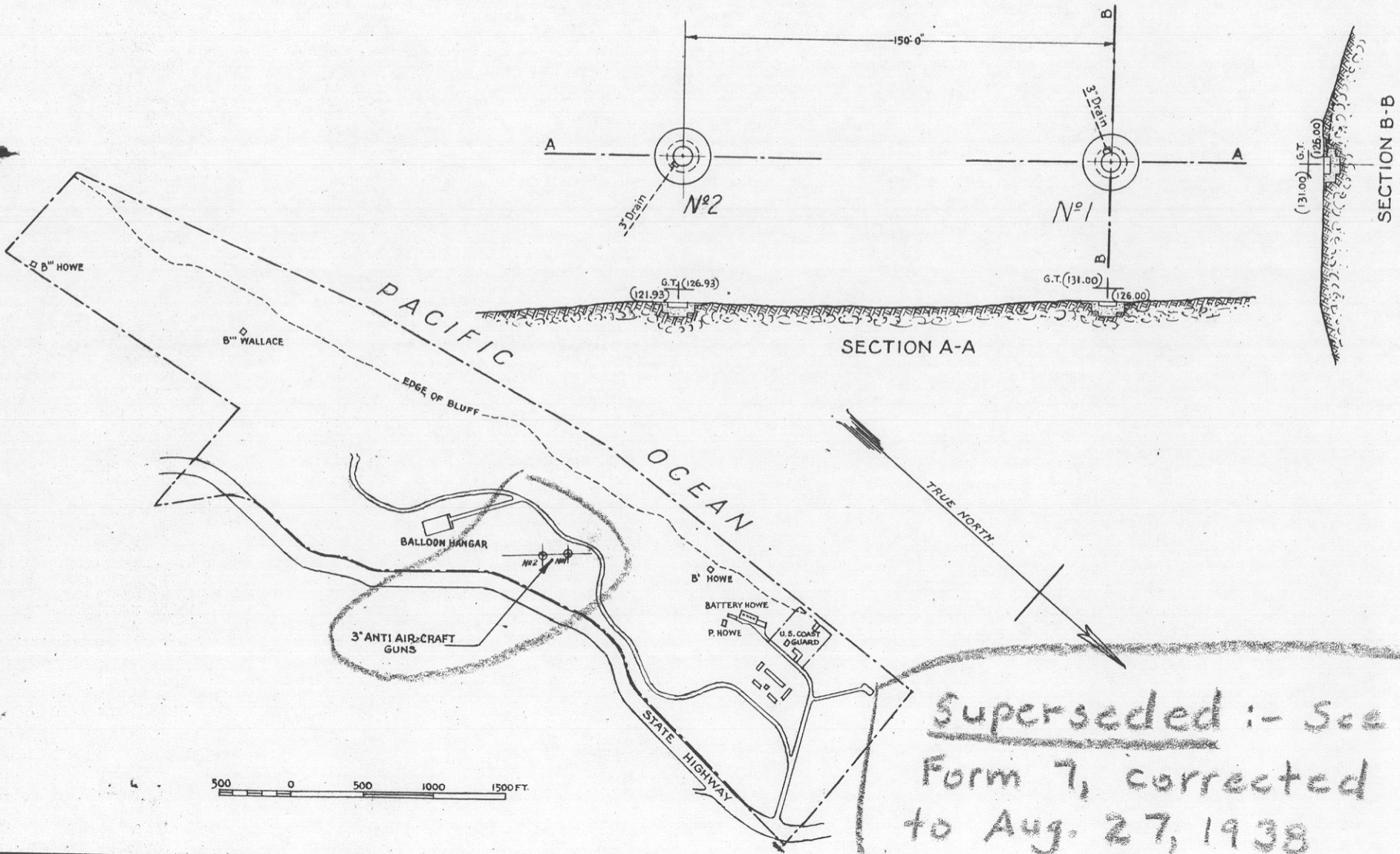
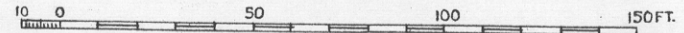
Superseded - See Form 7, corrected to Aug. 27, 1938

REPORT OF COMPLETED WORKS ~ SEACOAST FORTIFICATIONS
(BATTERY PLAN)

HARBOR DEFENSES OF SAN FRANCISCO, CAL.
FORT FUNSTON,
ANTI AIR-CRAFT BATTERY
N^o OF GUNS 2: CALIBER 3^{IN}: MODEL 1917 M.I.

CORRECTED TO AUG. 1, 1929

FORM-7



CONFIDENTIAL

SPEKM - 1

600,914 (San Fran) CM 69739
REPORT OF COMPLETED WORKS - SEACOAST FORTIFICATIONS
MAGAZINE

HARBOR DEFENSES OF SAN FRANCISCO.....
FORT ..Funston, California.....
STRUCTURE...Magazine 3" AA Battery.....

PART II Corrected to July 1943

STRUCTURE: x.....
Location (by coordinates) y.....
Location (by site description) Fort Funston.....
Date of transfer..... 24 September 1943.....
Cost to that date..... \$21,050.81 *
Type (for observing stat.--tower, dug-in,
cottages, etc.)..... dug-in.....
Type of construction.....
(a) Roof..... Reinforced Concrete.....
(b) Remainder of bldg. Reinforced Concrete.....
How concealed ... Earth Cover and Camouflage.....
How protected ... Earth Backfill.....
Height above concealment Not above concealment.....
Height above protection ..Not above protection.....
Conspicuous atyards..Not conspicuous.....

UTILITIES:
Electric PowerYes.....
Source of Power room for 3" AA.....
Characteristics: Voltage...Ac or DC..Phase.....
Kilowatts required..0.5.....
Type of lighting fixtures..S.F.l..(U. S. E. D.).....
Heat
How heated Not heated.....
Water Sewer
Connected to water mains..No.....
Connected to sewer.....No.....
Type latrine None.....

REFERENCE:
Reference of site.....
Reference of instrument axis..None.....

INSTRUMENTS & EQUIPMENT:
Type of observing inst. None.....
Type of plotting board None.....

DATA TRANSMISSION:
Type
Date of transfer

TIDE STATION:
Give description of tide gauge

* Includes cost of Power and Store Room

Paste on blue print showing
plan of each story of building,
giving principal dimensions,
including height of ceiling.

For Sections see attached Form 7

92-4882

CONFIDENTIAL

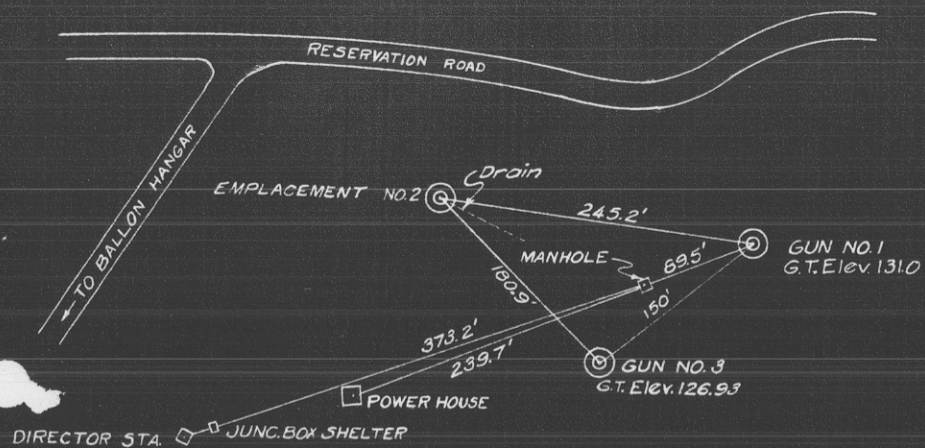
ED Form A-162B
16 Sept. 1943

REPORT OF COMPLETED WORKS - SEACOAST FORTIFICATIONS
(BATTERY PLAN)

FORM 7

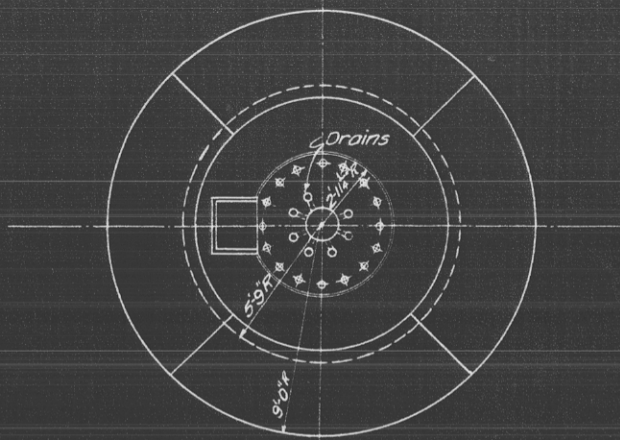
CORRECTED TO AUG. 27, 1938

HARBOR DEFENSES OF SAN FRANCISCO
FORT FUNSTON, CALIF.
ANTI AIRCRAFT BATTERY
NO OF GUNS 2 - CALIBER 3" CARRIAGE 1917
SCALES AS SHOWN

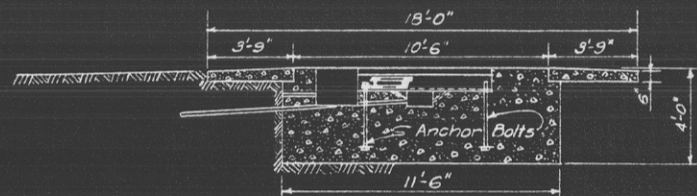


LOCATION PLAN

Scale $\sim 1" = 150'$
0 50 100 150 300

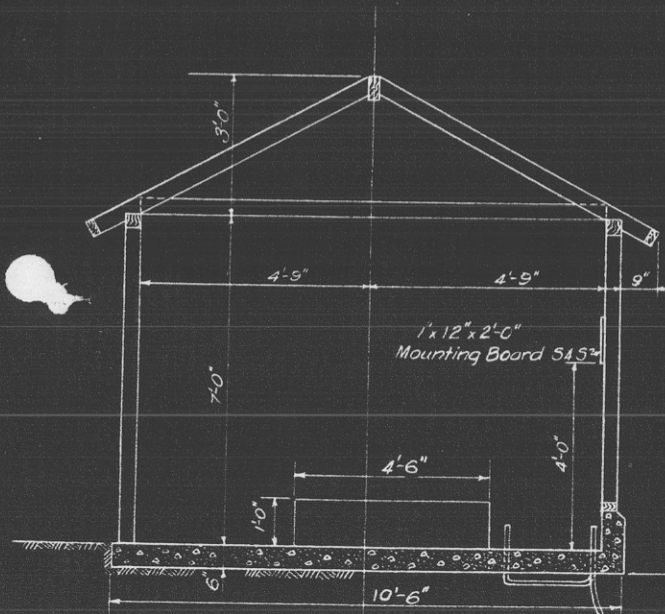


FIRING PLATFORM

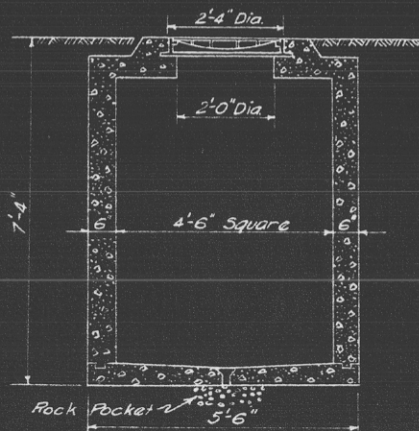


SECTION ON C

Scale $\sim \frac{1}{8}" = 1'-0"$
0 1 2 4 6 8 16

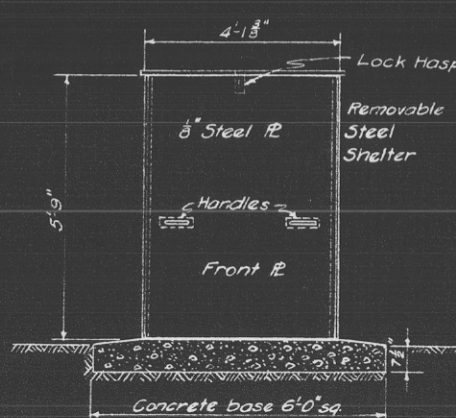


Section POWER HOUSE

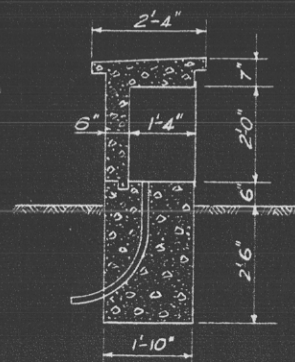


Section MANHOLE

Scale $\sim \frac{1}{4}" = 1'-0"$
0 1 2 4 8



Section DIRECTOR SHELTER



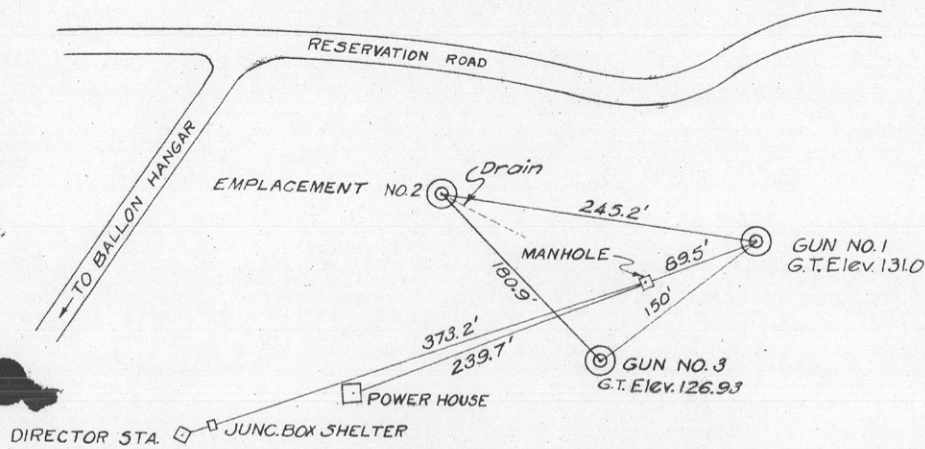
Section JUNCTION BOX

REPORT OF COMPLETED WORKS - SEACOAST FORTIFICATIONS
(BATTERY PLAN)*

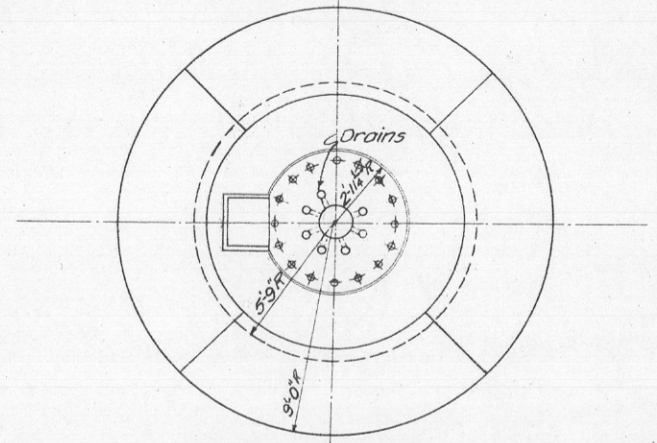
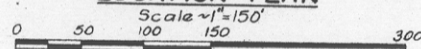
HARBOR DEFENSES OF SAN FRANCISCO
FORT FUNSTON, CALIF.
ANTI AIRCRAFT BATTERY
NO OF GUNS 2 - CALIBER 3" CARRIAGE 1917
SCALES AS SHOWN

FORM 7

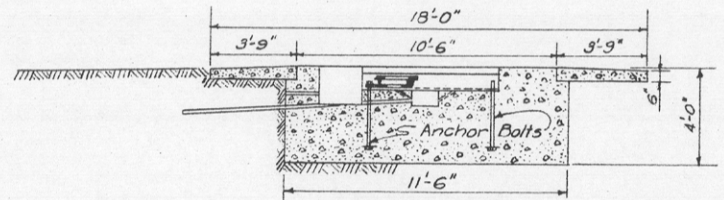
CORRECTED TO AUG. 27, 1938



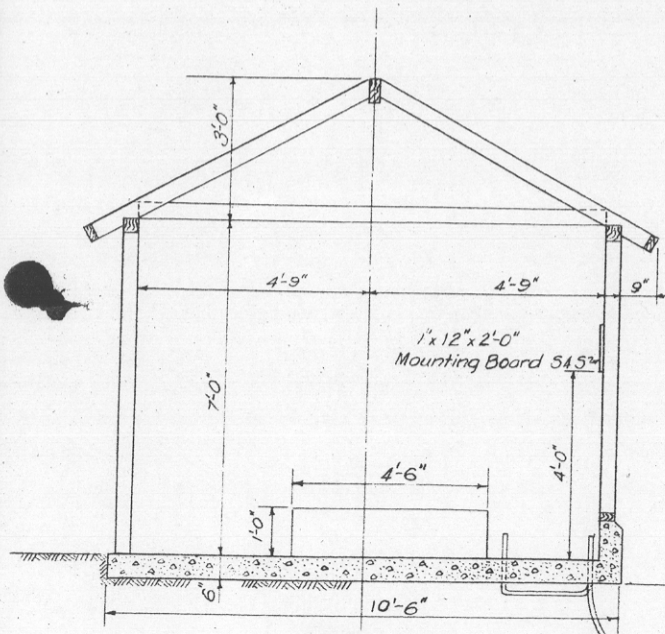
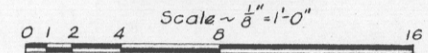
LOCATION PLAN



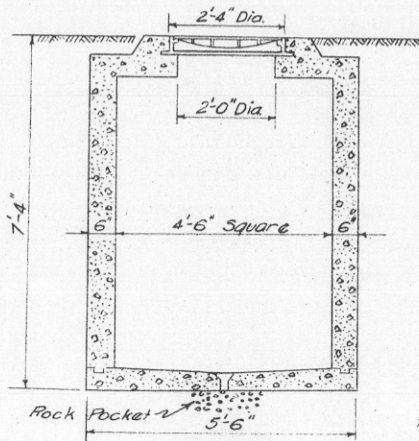
FIRING PLATFORM



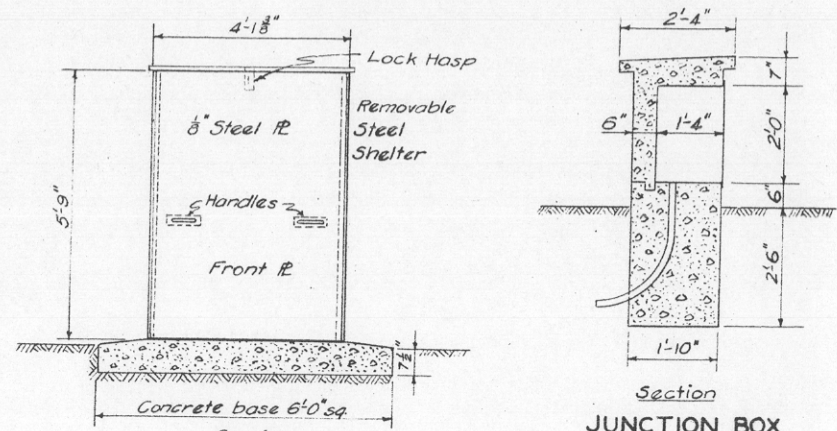
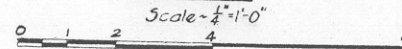
SECTION ON C



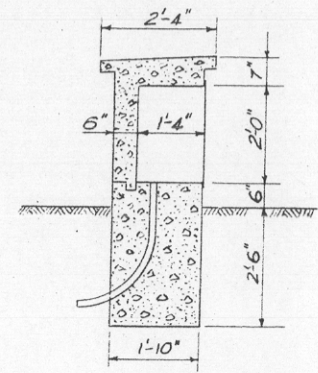
Section
POWER HOUSE



Section
MANHOLE

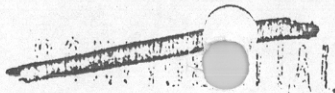


Section
DIRECTOR
SHELTER



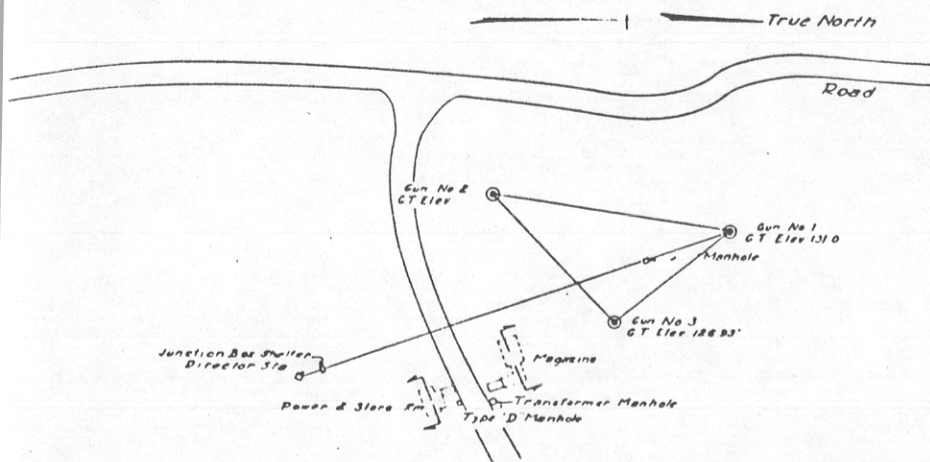
Section
JUNCTION BOX

600,914 (San Fran.) CM 69739

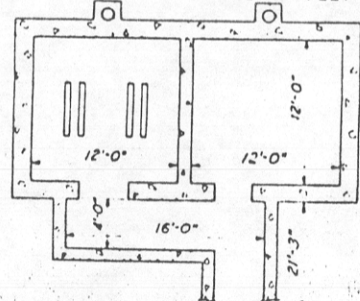


Number of Guns - 3. Caliber - 3". Carriage - 1917
 Scales as shown.

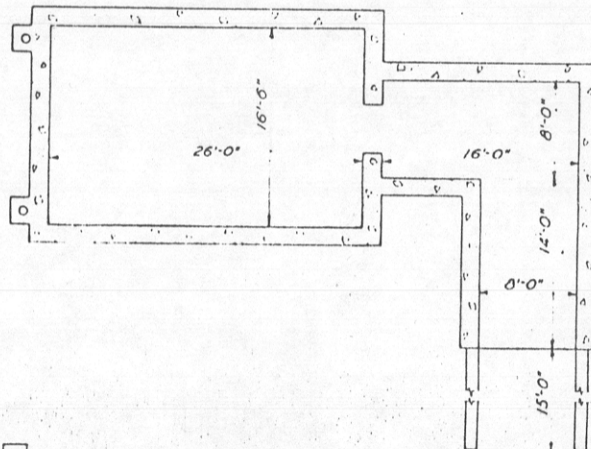
FORM 7. Corrected to July 20, 1943.



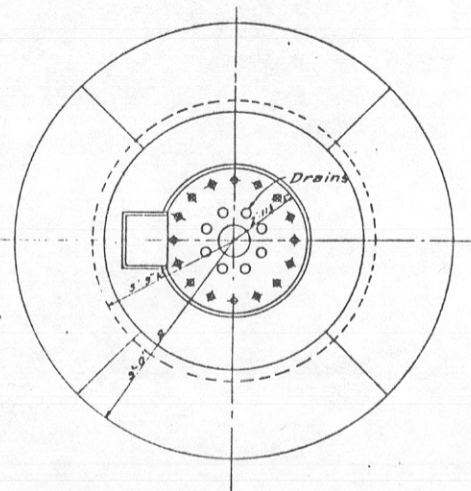
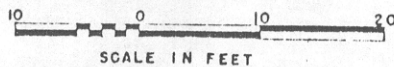
LOCATION PLAN



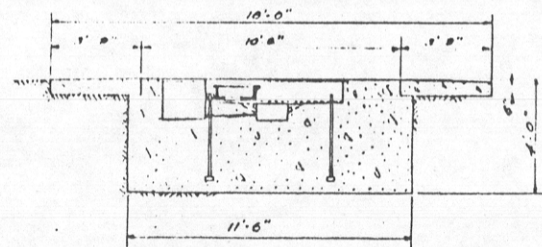
POWER & STORE RM



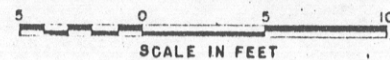
MAGAZINE



FIRING PLATFORM



SECTION ON CENTER LINE



DECLASSIFIED
 E.O. 12958, Sept. 27, 1953
 (GCM) by [signature] date 8-11-72



600714 (San Fran) CM 69739
REPORT OF COMPLETED WORKS - SEACOAST FORTIFICATIONS
MAGAZINE

HARBOR DEFENSES OF SAN FRANCISCO.....
FORT Funston, California.....
STRUCTURE.. Magazine 3" AA Battery.....

PART II Corrected to July 1943

STRUCTURE: x.....
Location (by coordinates) y.....
Location (by site description) Fort Funston.....
Date of transfer..... 24 September 1943.....
Cost to that date..... \$21,050.81 *.....
Type (for observing stat.--tower, dug-in, cottages, etc.)..... dug-in.....
Type of construction.....
(a) Roof..... Reinforced Concrete.....
(b) Remainder of bldg. Reinforced Concrete.....
How concealed..... Earth Cover and Camouflage.....
How protected..... Earth Backfill.....
Height above concealment Not above concealment.....
Height above protection Not above protection.....
Conspicuous at..... yards. Not conspicuous.....

UTILITIES:
Electric Power..... Yes.....
Source of..... Power room for 3" AA.....
Characteristics: Voltage..... Ac or DC..Phase.....
Kilowatts required..... 0.5.....
Type of lighting fixtures..... S.F.L. (U. S. F. D.).....
Heat.....
How heated..... Not heated.....
Water Sewer.....
Connected to water mains..... No.....
Connected to sewer..... No.....
Type latrine..... None.....

INSTRUMENTS & EQUIPMENT:
Type of observing inst. None.....
Type of plotting board None.....

DATA TRANSMISSION:
Type.....
Date of transfer.....

TIDE STATION:
Give description of tide gauge.....

* Includes cost of Power and Store Room

Paste on blue print showing plan of each story of building, giving principal dimensions, including height of ceiling.

For Sections see attached Form 7

92-4882

ED Form A-162B
16 Sept. 1943

REFERENCE:
Reference of site.....
Reference of instrument axis..... None.....

600.914 (S. 1 Form) CM 69739

REPORT OF COMPLETED WORKS - SEACOAST FORTIFICATIONS
POWER & STOREROOM

HARBOR DEFENSES OF SAN FRANCISCO.....
FORT ... FUNSTON.....
STRUCTURE.. POWER AND STOREROOM 3" A.A. Battery

PART II Corrected to JULY 1943

STRUCTURE: x.....

Location (by coordinates) y.....

Location (by site description) Fort Funston

Date of transfer.. 24 September 1943

Cost to that date.. \$21,050.81 *

Type (for observing stat.--tower, dug-in, cottages, etc.) Dug-in

Type of construction.....

(a) Roof Reinforced concrete

(b) Remainder of bldg. Reinforced concrete

How concealed Earth cover and camouflage

How protected Earth cover

Height above concealment Not above concealment

Height above protection Not above protection

Conspicuous atyards.. Not conspicuous

INSTRUMENTS & EQUIPMENT:

Type of observing inst. None

Type of plotting board None

DATA TRANSMISSION:

Type

Date of transfer

TIDE STATION:

Give description of tide gauge

* Includes cost of magazine

** Generators installed by others

UTILITIES:

Electric Power Yes

Source of Power Room (See note)**

Characteristics: Voltage...Ac or DC..Phase.....

Kilowatts required..0.5

Type of lighting fixtures..SF, 1 (U.S.E.D.)

Heat

How heated Not Heated.

Water Sewer

Connected to water mains..(By others)

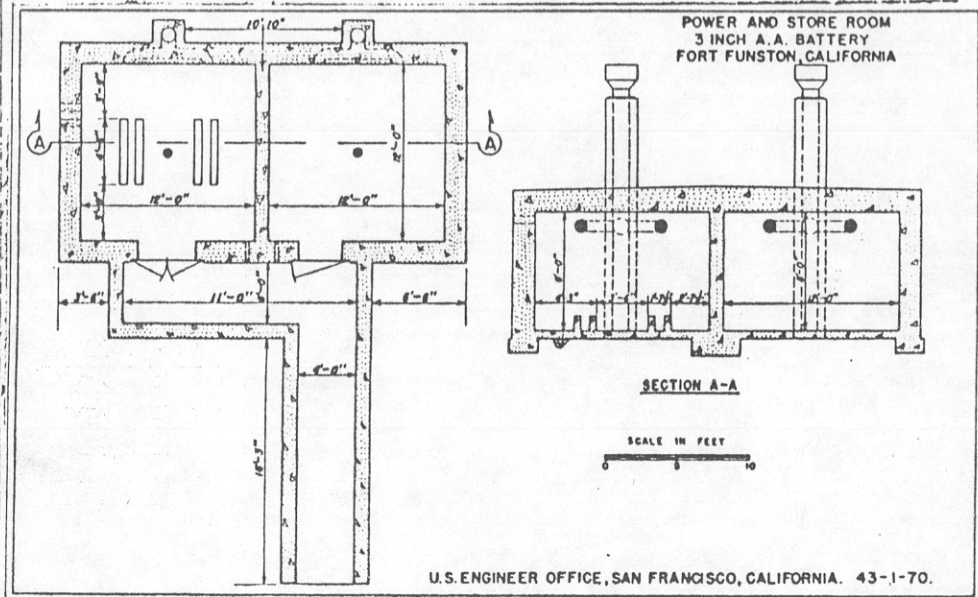
Connected to sewer.....(By others)

Type latrine(By others)

REFERENCE:

Reference of site.....

Reference of instrument axis..None



ED Form A-162B
16 Sept. 1943