

REPORT OF COMPLETED WORKS - SEACOAST FORTIFICATIONS
(Fire Control Structures)

S. SKM-1

HARBOR DEFENSES OF LOS ANGELES
FORT MAC ARTHUR
STRUCTURE: HDOP - HECP - HDOP₂ - G₁

~~CONFIDENTIAL~~

Part II Corrected to 13 January 1945

STRUCTURE: W 7213
Location (by coordinates) S 4819
Location (site description) Site No. 6
Date of transfer: 7 November 1944
Cost to that date: \$69,356.02 * *see other side*
Type: Dug-in
Type of construction
(a) Roof: Reinforced concrete -(HDOP₂ & G₁ - Plastic Armor)
(b) Remainder of bldg.: Reinforced concrete
How concealed: HDOP-HECP underground
How protected: HDOP₂-G₁ splinterproofed
Height above concealment: HDOP₂-G₁ - 3 feet
Height above protection: HDOP₂-G₁ - 3 feet
Conspicuous at 100 yards

UTILITIES:
Electric power
Source of: Commercial & 2 - 25 KW standby generators
Characteristics: Voltage 2400 AC
Kilowatts required: 45 at 3 phase & 100 KW at 1 phase
Type of lighting fixtures: Direct
Heat
How heated: Air conditioning system
Water sewer
Connected to water mains: Yes
Connected to sewer: Yes
Type latrine: Syphon-jet

REFERENCE:
Reference of site: Elevation 310.0
Reference of instrument axis: HDOP₂ - Elevation 312.91
G₁ - Elevation 310.92
Datum is Mean Lower Low Water

INSTRUMENT & EQUIPMENT:
Type of observing inst.: 1 azimuth & 1-DPF each,
in HDOP₂ & G₁
Type of plotting board: None

DATA TRANSMISSION:
Type: Telephone
Date of transfer: No record (Signal Corps item)

REMARKS: (SEE ALSO REVERSE)

HDOP - HECP: Formerly Battery Leary-Merriam
HDOP₂: Formerly G₂ Station (prior to Mod. Program)
G₁: Formerly BC-Leary (Prior to Mod. Program)
Origin of local coordinates: Station "R" (U.S.C. & G.S. Sta. "Deadman's Island")

DUE TO SIZE OF STRUCTURE, ACCOMPANYING 8" x 10 1/2"
DRAWING IS FURNISHED IN LIEU OF PRESCRIBED 3" x 5 1/2"
DRAWING ATTACHED TO FORM FOR FIRE CONTROL STRUCTURES.

~~CONFIDENTIAL~~

THIS REPORT SUPERSEDES THE FOLLOWING:

1. Report, dated 11 May 1926, "Batteries Leary & Merriam," with drawing, Form 7, dated 6 October 1919. Transferred 10 October 1919; cost to that date: \$251,362.63. (Armament removed by Ordnance Department during November 1944) (2 - 25 KW generators remain in place; 3 - 10 KW transformers replaced by 3 - 15 KW and 1 - 100 KW, added, as shown on Part V of report).
2. Report, dated 30 June 1920, "F₂¹ Station." Transferred 30 June 1920, cost to that date: \$2213.51, structure later designated: G₂, is now HDOP₂(Mod. Program - 1941).
3. No record of original report for BC-Leary (now G₁ Command Post)

No record of original report for BC-Merriam (now B₆ S₆ located to left flank on top HDOP-HECP structure. Splinter-proofed under Job No. Fort MacArthur FS-5, Directive Consecutive No. FS-1009; see report dated 18 August 1944, submitted to OCE, letter of same date).

Cost reported on reverse covers conversion of structures, Items Nos. 1, 2, and 3, above.

5512

OFFICE DIVISION ENGINEER
PACIFIC DIVISION

FEB 5 45-1030 AM

SAN FRANCISCO, CALIFORNIA

~~CONFIDENTIAL~~

SPEKM-1

REPORT OF COMPLETED WORKS - SEACOAST FORTIFICATIONS

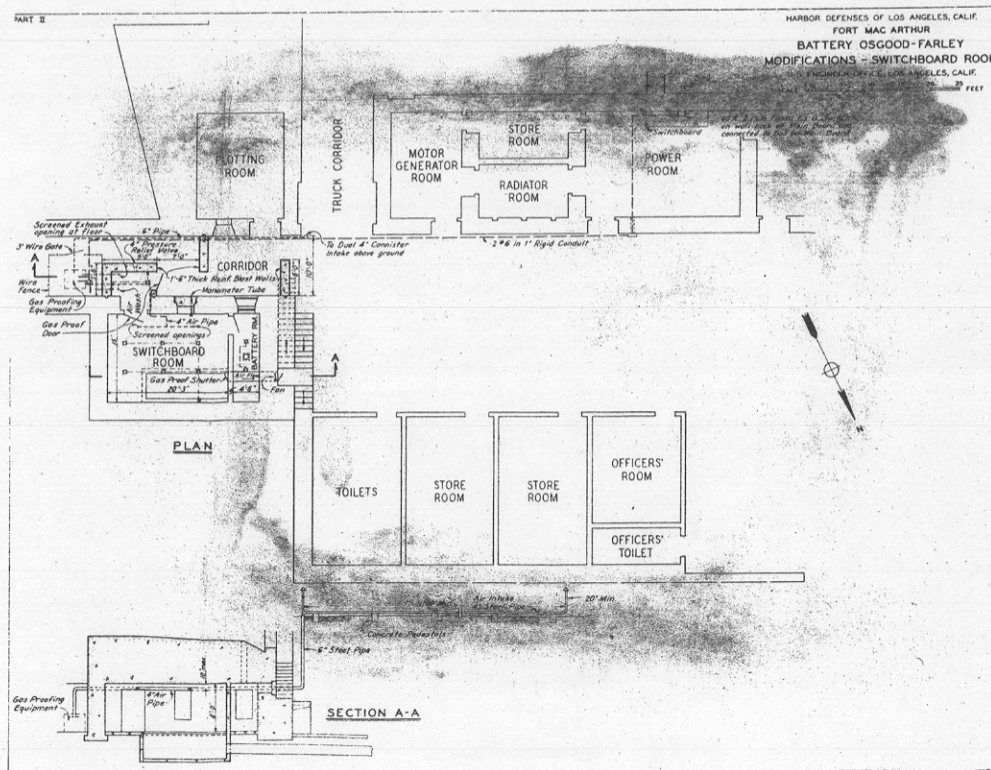
HARBOR DEFENSES OF LOS ANGELES
FORT MAC ARTHUR

130848

Gasproofing Fire Control Switchboard Room
Battery Osgood-Farley

Part VI Corrected to 12 May 1945

Authorized under Job No. Ft. Mac Arthur FS-7; Directive Consecutive No. FS-1512
Work completed: October 1944. Date of transfer: 20 November 1944, cost: \$6,169.17
Work consists of providing gasproofing for fire control switchboard room of the
Modernization Program (HDLA-1941) in existing Battery Osgood-Farley.



~~CONFIDENTIAL~~

600,914 (Los Angeles) CM 62804
 REPORT OF COMPLETED WORKS - SEACOAST FORTIFICATIONS
 (Fire control or Torpedo Structures)

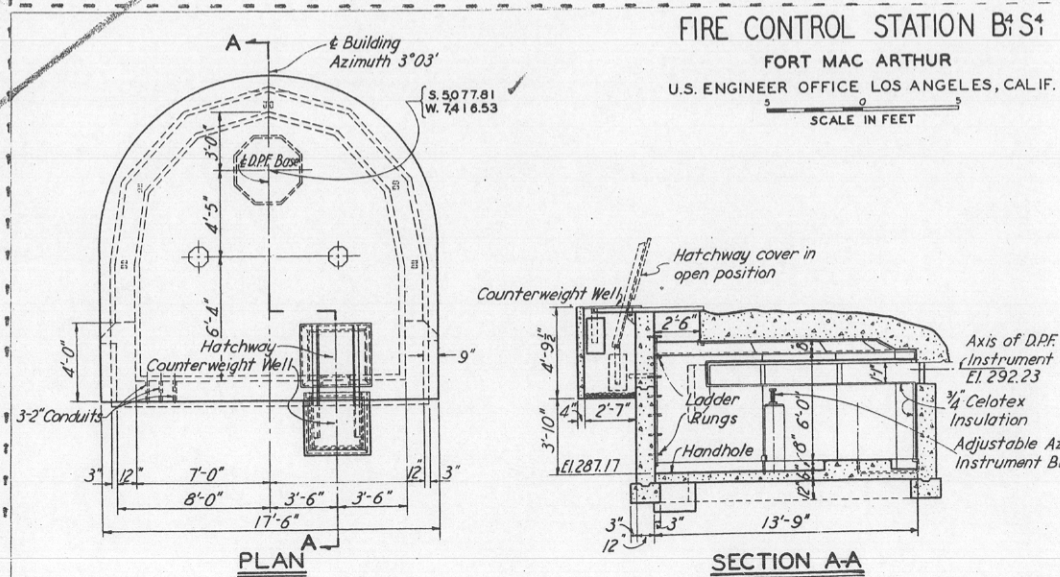
HARBOR DEFENSES OF LOS ANGELES
 FORT MAC ARTHUR (UPPER RESERVATION)
 STRUCTURE FIRE CONTROL STATION - B4 S1 #240

Form 2.

Corrected to 11 September 1943

62804

STRUCTURE:		INSTRUMENTS AND EQUIPMENT:	
Location	'Site No. 7, Ft. MacArthur '(Upper Reservation)	Type of observing inst.	'1 - D.P.F.; 1 - Azimuth
Date of transfer	'26 August 1943	Type of plotting board.	'None
Cost to that date	'\$3,483.22		
Type of construction		DATA TRANSMISSION	
(a) Roof	'Reinforced concrete	Type of	'Telephone (Signal Corps Install- ation)
(b) Remainder of bldg.	'Reinforced concrete	Date of transfer	'Not transferred (Signal Corps Installation)
How concealed	'Exposed surfaces stained 'to blend with surround- ing terrain	Cost of data transmission equipment	'Unknown (Signal Corps Install- ation)
How protected	'Dug-out type with earth 'cover; splinter-proof 'shutters	REMARKS:	'Elevations are in feet above 'Mean Lower Low Water. 'Origin of Coordinates is U.S.C. '& G.S. Sta. "R" (Deadman's Island)
Height above concealment	'3'-0"		
Height above protection	'3'-0"		
Conspicuous at 90 yards			
ELECTRIC CURRENT:			
Source of	'None		
Kilowatts required	'None		
Type of lighting fixtures	'Not lighted		
HEAT:			
How heated	'Not heated		
WATER & SEWER:			
Connected to water mains	'No		
Connected to sewer	'No		
Type of latrine	'None		
Permanent or temporary inst'n.	'Permanent		
Present condition	'Good		
REFERENCE:			
Reference of site	'D.P.F. = S-5077.81; W- '7416.53		
Reference of instrument axis	'D.P.F. = El. 292.23'		
Type and capacity of crane	'None		
Max. dim. of reel handled.	'None		



542
 FS-1008 Proj Card 33

600.914 (Los Ang) 105860
REPORT OF COMPLETED WORKS - SEACOAST FORTIFICATIONS
(Fire Control Structure)

HARBOR DEFENSES OF LOS ANGELES
FORT MAC ARTHUR
STRUCTURE B⁴ S⁴
1 1
246

SPEKM-1

~~CONFIDENTIAL~~

Part II

Corrected to 24 August 1944

105860
STRUCTURE: W 7,416.53
Location (by coordinates) S 5,077.81
Location (site description) Site No. 7 (Ft. MacArthur)
Date of transfer: 26 August 1943
Cost to that date: \$3,483.22
Type: 1-level dug-in
Type of construction
(a) Roof: Reinforced concrete
(b) Remainder of bldg.: Reinforced concrete
How concealed: Earth cover; exposed surfaces stained
How protected: Earth cover & steel slot covers
Height above concealment: 3'-0" (at slot openings)
Height above protection: - - -
Conspicuous at 90 yards

UTILITIES:

Electric power
Source of: See "Remarks-2"
Characteristics: Voltage 110 AC 3-phase
Kilowatts required: 0.10
Type of lighting fixtures: None installed
Heat
How heated: Not heated
Water sewer
Connected to water mains: No
Connected to sewer: No
Type latrine: None

REFERENCE:

Reference of site: Elevation 295.0
Reference of instrument axis: Elevation 292.23
Datum: Mean Lower Low Water
Origin of coordinates: Station "R" (U.S.C. & G.S.
station "Deadman's Island")

INSTRUMENTS & EQUIPMENT:

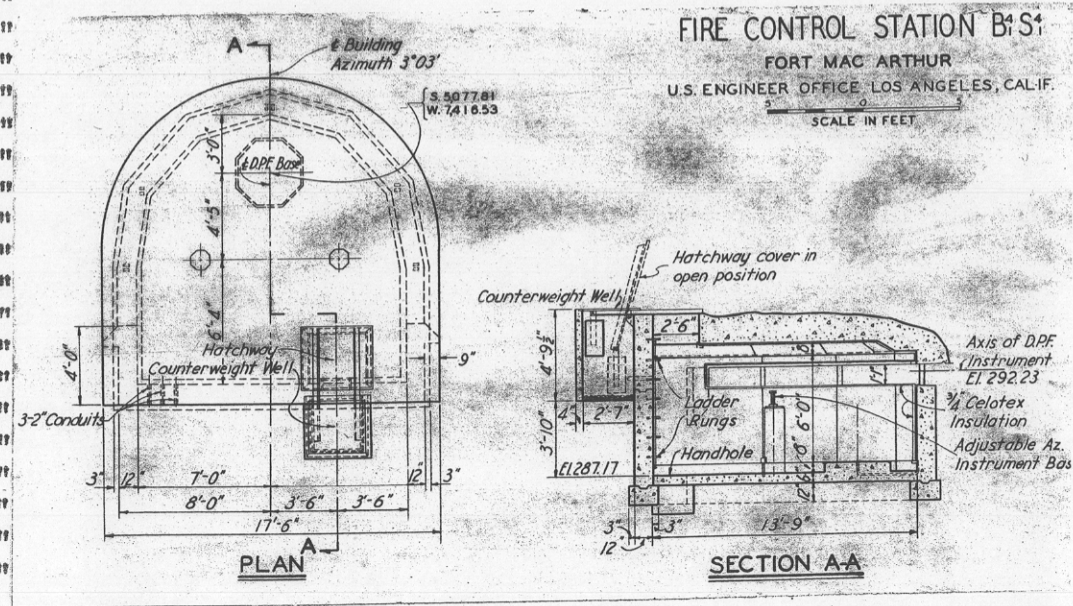
Type of observing inst.: 1-DPF & 1-azimuth
Type of plotting board: None

DATA TRANSMISSION:

Type: Telephone
Date of transfer: No record (Signal Corps item)

REMARKS:

1. This report SUPERSEDES report Form 2, dated 11 September 1943 (see "Revisions" on reverse).
2. Commercial power (from main switchboard Battery Leary-Merriam) & 2 - 2.5 KW auxiliary generators installed to serve the subject structure jointly with B₅ S₅, Site 8A & BC₃ B₃ S₃, Site 8, requiring 0.1 & 0.2 KW, respectively.



~~CONFIDENTIAL~~

Power

FS-1219

600.914(SA)104986

SPEKM-1

REPORT OF COMPLETED WORKS - SEACOAST FORTIFICATIONS
(Fire Control Structure)

HARBOR DEFENSES OF LOS ANGELES
FORT MAC ARTHUR
STRUCTURE: BC₃ B₃^{1/2} S₃^{1/2} - B₂⁶ S₂⁶

Site 8

Part II

Corrected to 18 August 1944

~~CONFIDENTIAL~~

STRUCTURE

Location (by coordinates) See drawing attached
Location (site description) Site #8 (Ft. MacArthur)
Date of transfer: 11 May 1944
Cost to that date: \$8,807.69
Type: 2-level dug-in
Type of construction
(a) Roof: Reinforced concrete
(b) Remainder of bldg.: Reinforced concrete
How concealed: Earth cover & native growth
How protected: Earth cover
Height above concealment: 3'-0" (at slot openings)
Height above protection: 3'-0" (at slot openings)
Conspicuous at 75 yards

UTILITIES:

Electric power
Source of: See "Remarks"
Characteristics: Voltage 110 AC 3 phase
Kilowatts required: 0.2
Type of lighting fixtures: None installed
Heat
How heated: Not heated
Water sewer
Connected to water mains: No
Connected to sewer: No
Type latrine: None

REFERENCE:

Reference of site: Elevation 303.0
Reference of instrument axis: See drawing attached
Datum: Mean Lower Low Water
Origin of coordinates: Station "R" (USC & GS station "Deadman's Island")

INSTRUMENTS & EQUIPMENT:

Type of observing inst.: 1-DPF & 1-azimuth (in each level)
Type of plotting board: None

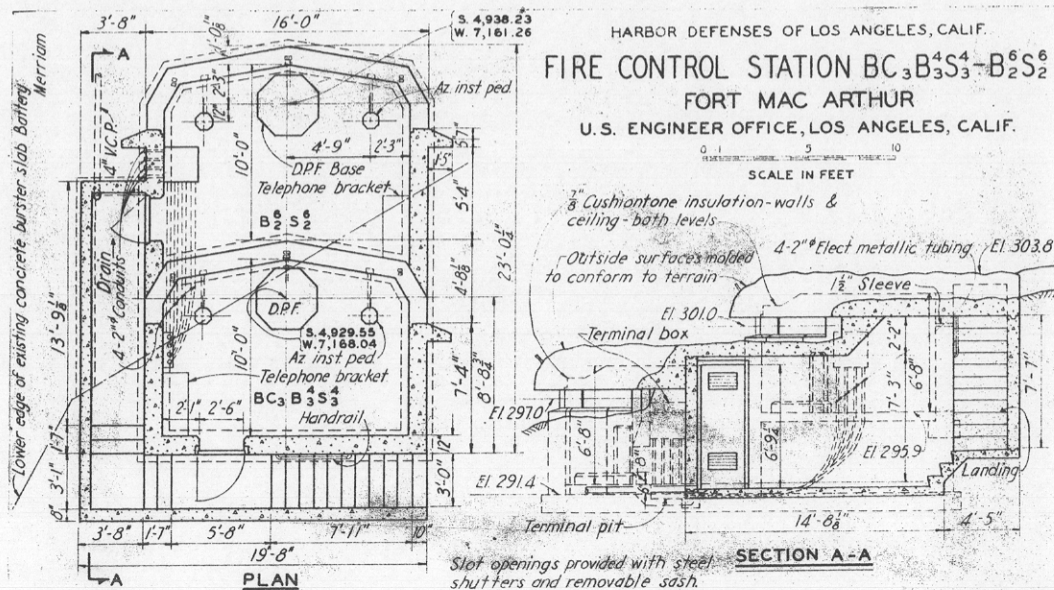
DATA TRANSMISSION:

Type: Telephone
Date of transfer: No record (Signal Corps item)

REMARKS:

Commercial power (from main switchboard Battery Leary-Merriam) & 2 - 2.5 KW auxiliary generators installed to serve the subject structure jointly with B₁ S₁⁴ and B₅ S₅⁶ (requiring approx. 0.10 KW each) which are located at Site 7 & Site 8A, respectively.

Commercial power to Battery Leary-Merriam switchboard served by Southern California Edison Company.



FS-1008

~~CONFIDENTIAL~~

600.914(LA)104985

SPEKM-1

REPORT OF COMPLETED WORKS - SEACOAST FORTIFICATIONS
(Fire Control Structure)

HARBOR DEFENSES OF LOS ANGELES
FORT MAC ARTHUR
STRUCTURE: B₅ S₅
242

~~CONFIDENTIAL~~

Part II Corrected to 18 August 1944

STRUCTURE: 104985 W 7,174.82
 Location (by coordinates) S 4,785.95
 Location (site description) Site 8A (Ft. MacArthur)
 Date of transfer: 10 February 1944
 Cost to that date: \$1,411.16 (see "Remarks 1")
 Type: See "Remarks 2"
 Type of construction
 (a) Roof: 2 1/2" plastic armor
 (b) Remainder of bldg.: Concrete (existing)
 How concealed: Tone down paint
 How protected: Plastic armor roof, steel shutters
 Height above concealment: 2'-0" (above battery fill)
 Height above protection: - - -
 Conspicuous at 100 yards

UTILITIES:

Electric power
 Source of: See "Remarks 3"
 Characteristics: Voltage 110 AC 3 phase
 Kilowatts required: 0.1
 Type of lighting fixtures: None
 Heat
 How heated: Not heated
 Water sewer
 Connected to water mains: No
 Connected to sewer: No
 Type latrine: None

REFERENCE:

Reference of site: Elevation 310.0
 Reference of instrument axis: 310.58
 Datum: Mean Lower Low Water
 Origin of coordinates: Station "R" (U.S.C. & G.S.
 station "Deadman's Island")

INSTRUMENTS & EQUIPMENT:

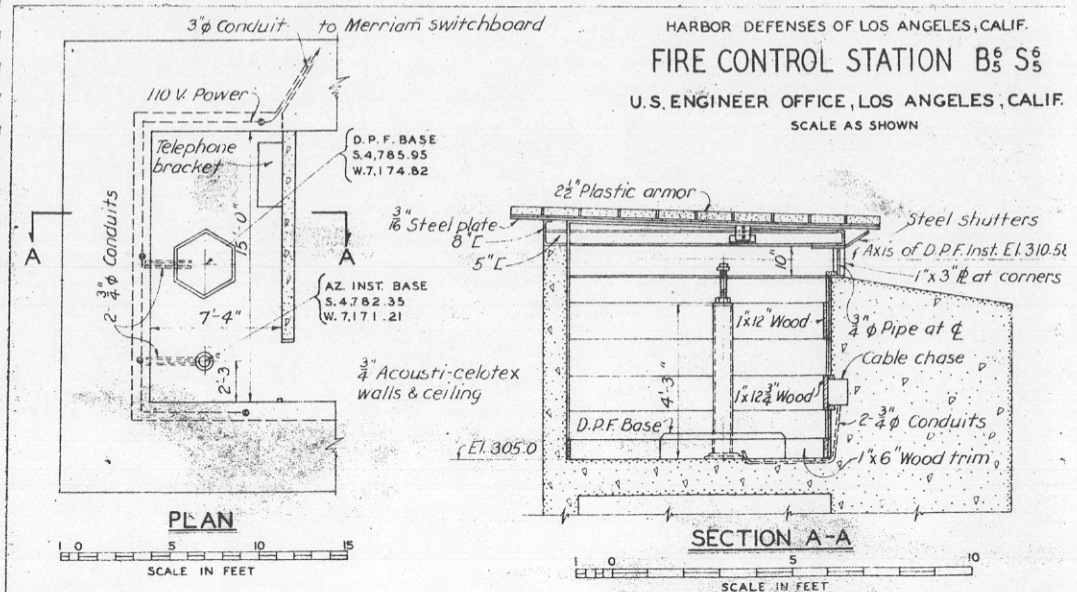
Type of observing inst.: 1-DPF & 1-azimuth
 Type of plotting board: None

DATA TRANSMISSION:

Type: Telephone
 Date of transfer: No record (Signal Corps Item)

REMARKS:

1. Cost covers modifications to existing structure only.
2. Structure is located on, & is intergal part of, Battery Merriam; was formerly BC - Merriam, splinter-proofed & assigned to Battery 242 by Mod. Program - 1941.
3. Commercial power (from main switchboard Battery Leary-Merriam) & 2 - 2.5 KW auxiliary generators installed to serve the subject structure jointly with B₁ S₁, Site 7, & BC₃ B₃ S₃-B₂ S₂, Site 8; requiring 0.1 KW & 0.2 KW, respectively.



FS-1009

~~CONFIDENTIAL~~