



**US Army Corps  
of Engineers**  
HUNTSVILLE ENGINEERING  
AND SUPPORT CENTER

---

Defense Environmental Restoration Program  
for  
Formerly Used Defense Sites  
Ordnance and Explosives

## **ARCHIVES SEARCH REPORT**

### **FINDINGS**

**Ramona Bombing Target and  
Emergency Landing Field**

**Ramona, California**

**Project Number - J09CA106901**

**MAY 1998**

---

Prepared by  
**US ARMY CORPS OF ENGINEERS  
ST. LOUIS DISTRICT**

TABLE OF CONTENTS

<b>1.0 INTRODUCTION</b>	Page 1-1
1.1 AUTHORITY	Page 1-1
1.2 SUBJECT	Page 1-1
1.3 PURPOSE	Page 1-1
1.4 SCOPE	Page 1-2
<b>2.0 PREVIOUS SITE INVESTIGATIONS</b>	Page 2-1
2.1 CORPS OF ENGINEERS DOCUMENTS	Page 2-1
2.2 OTHER REPORTS	Page 2-1
<b>3.0 SITE DESCRIPTION</b>	Page 3-1
3.1 LAND USE	Page 3-1
3.2 CLIMATIC DATA	Page 3-1
3.3 GEOLOGY AND SOILS	Page 3-2
3.4 HYDROLOGY	Page 3-3
3.5 ECOLOGY	Page 3-3
3.6 DEMOGRAPHICS	Page 3-4
<b>4.0 SITE HISTORY</b>	Page 4-1
4.1 HISTORICAL SITE SUMMARY	Page 4-1
4.1.1 General Site History	Page 4-1
4.1.2 Summary of Ordnance and Explosives Activities	Page 4-1
4.1.3 Summary of Chemical Warfare Material Activities	Page 4-2
4.1.4 Certificates of Clearance	Page 4-2
4.2 REVIEW OF HISTORICAL RECORDS	Page 4-2
4.3 SUMMARY OF INTERVIEWS	Page 4-14
4.4 AIR PHOTO INTERPRETATION AND MAP ANALYSIS	Page 4-14
4.4.1 Site Specific Map and Drawing Analysis	Page 4-14
4.4.2 Air Photo Interpretation	Page 4-14
<b>5.0 REAL ESTATE</b>	Page 5-1
5.1 CONFIRMED DOD OWNERSHIP	Page 5-1
5.2 POTENTIAL DOD OWNERSHIP	Page 5-2
5.3 SIGNIFICANT PAST OWNERSHIP OTHER THAN DOD	Page 5-2
5.4 PRESENT OWNERSHIP	Page 5-2
<b>6.0 SITE INSPECTION</b>	Page 6-1
6.1 GENERAL PROCEDURES AND SCOPE	Page 6-1
6.2 SITE INSPECTION SYNOPSIS	Page 6-1
<b>7.0 EVALUATION OF ORDNANCE POTENTIAL</b>	Page 7-1
7.1 CONVENTIONAL ORDNANCE CONTAMINATION	Page 7-1
7.2 CHEMICAL WARFARE MATERIAL CONTAMINATION	Page 7-1

**8.0 TECHNICAL DATA OF ORDNANCE AND EXPLOSIVES . . . . . Page 8-1**  
    8.1 POTENTIAL OE AND CWM ITEMS . . . . . Page 8-1  
    8.2 DESCRIPTION OF CONVENTIONAL ORDNANCE . . . . . Page 8-1  
    8.3 DESCRIPTION OF CHEMICAL WARFARE MATERIALS . . . . . Page 8-1

**9.0 EVALUATION OF OTHER SITE INFORMATION . . . . . Page 9-1**

APPENDICES

**A REFERENCES**

**B ABBREVIATIONS, ACRONYMS AND BREVITY CODES**

**C TEXT / MANUALS . . . . . Not Used**

**D REPORTS / STUDIES**

**E LETTERS / MEMORANDUMS / MISCELLANEOUS ITEMS**

**F REAL ESTATE DOCUMENTS . . . . . Not Used**

**G NEWSPAPER / JOURNALS . . . . . Not Used**

**H INTERVIEWS**

**I PRESENT SITE PHOTOGRAPHS**

**J HISTORICAL PHOTOGRAPHS**

**K HISTORICAL MAPS / DRAWINGS . . . . . Not Used**

**L SITE SAFETY AND HEALTH PLAN / SITE INSPECTION REPORT**

**M REPORT DISTRIBUTION LIST**

REPORT PLATES

**1 Ramona Bombing Target and Emergency Landing Field - Vicinity Map**  
**2 Ramona Bombing Target and Emergency Landing Field - Aerial Photograph-1949**

## 1.0 INTRODUCTION

### 1.1 AUTHORITY

In 1986, Congress established the Defense Environmental Restoration Program (DERP) at 10 United State Code (USC) 2701 et seq. This program directed the Secretary of Defense to "carry out a program of environmental restoration at facilities under the jurisdiction of the Secretary."

In March 1990, the Environmental Protection Agency (EPA) issued a revised National Contingency Plan (NCP). Under 40 Code of Federal Regulations (CFR) 300.120, EPA designated the Department of Defense (DoD) to be the removal response authority for incidents involving DoD military weapons and munitions under the jurisdiction, custody and control of DoD.

Since the beginning of this program, the U.S. Army Corps of Engineers has been the agency responsible for environmental restoration at Formerly Used Defense Sites (FUDS). Since 1990, the U.S. Army Engineering and Support Center, Huntsville (CEHNC) has been the Center of Expertise (CX) and Design Center for Ordnance and Explosives.

### 1.2 SUBJECT

**Ramona Bombing Target and Emergency Landing Field** consisted of 404.74 acres near Ramona, California, located in San Diego County. Military use began with the lease of 155.7 acres by the Navy on 15 October 1943, to establish the **Ramona Bombing Target**. The Danger Area for the practice dive bombing target at Ramona was rescinded on 6 September 1944, in order for the Navy to construct a landing strip at that location. The Navy acquired additional property and constructed an airstrip, to become the **Ramona Emergency Landing Field**. On 26 February 1947, San Diego County took possession of the airstrip, under lease with the Navy. Nearly a decade later, after being reported excess, San Diego County received the property by Quitclaim Deed in 28 December 1956. The ordnance and explosives (OE) associated with the site include practice bombs. Plate 1 in the report plates section shows the general location of the site.

### 1.3 PURPOSE

The Archives Search Report (ASR) compiles information obtained through historical research at various archives and records holding facilities, interviews with persons associated with Ramona Bombing Target and Emergency Landing Field or its operations and a team inspection of the site. The search directs efforts towards determining possible use or disposal of OE and chemical warfare materials (CWM) on the site. The research places particular emphasis on establishing the types, quantities and areas of disposal. This process obtains information for use in developing recommendations for further action at the former Ramona Bombing Target and Emergency Landing Field.

#### 1.4 SCOPE

This investigation focuses on potential OE and/or CWM contamination remaining on the former Ramona Bombing Target and Emergency Landing Field. The DERP-FUDS project number is J09CA106901. This report presents the following:

- A brief history of Ramona Bombing Target and Emergency Landing Field
- Description and characteristics of the immediate surrounding area
- A review of related site investigations
- An aerial photography and map analysis of the site
- Real estate information, past and present
- Findings of the site inspection
- Description of the OE and/or CWM identified with the site

These factors represent the basis for the evaluation of potential OE and CWM contamination and associated risks at Ramona Bombing Target and Emergency Landing Field.

## 2.0 PREVIOUS SITE INVESTIGATIONS

### 2.1 CORPS OF ENGINEERS DOCUMENTS

The Los Angeles District of the Corps of Engineers prepared the following investigation of Ramona Bombing Target and Emergency Landing Field in support of the DERP for FUDS (see Appendix D-1):

Inventory Project Report (INPR) Findings of Fact for project no. J09CA1069, *Ramona Bombing Target and Emergency Landing Field*, Ramona, California, dated 6 August 1994.

Interviews with local law enforcement "hazardous device" squads and military Explosive Ordnance Disposal (EOD) units resulted in reports of practice bombs, from "1 to 25 pounds" being recovered in the area. The INPR identified only OE as a potential hazard at the former Ramona Bombing Target and Emergency Landing Field. The INPR assigned a Risk Assessment Code (RAC) of 2, reduced to 4.

### 2.2 OTHER REPORTS

The archive search did not locate any additional environmental investigations or reports concerning Ramona Bombing Target and Emergency Landing Field.

### 3.0 SITE DESCRIPTION

#### 3.1 LAND USE

##### 3.1.1 Location

Ramona Bombing Target and Emergency Landing Field consisted of 404.74 acres in San Diego County, California (see Plate #1). This site lies approximately twenty-five miles northeast of Ramona, California.

##### 3.1.2 Prior Site Use

Prior to the Eleventh Naval District's operation of the Ramona Emergency Landing Field, it served as the Ramona Bombing Target. Before that, land usage entailed livestock grazing and agricultural.

##### 3.1.3 Present Site Use

The former Ramona Emergency Landing Field remains an airfield, the Ramona Airport. The former Ramona Bombing Target is used for livestock grazing.

#### 3.2 CLIMATIC DATA

Ramona's temperatures are tempered by the prevailing winds off the Pacific Ocean. Dry easterly winds sometimes blow for several days at a time bringing warm temperatures. These winds occur predominately in the fall, bringing warmer temperatures in the months of September and October. High temperatures are almost invariably accompanied by low relative humidities, which often drop below 20 percent. The nearest source of climatological data is the National Oceanic and Atmospheric Administration (NOAA) station located in San Diego. The station is about 25 miles southwest of the site and about 1300 feet lower in elevation. Although, the San Diego station shows unusually small daily temperature ranges, a few miles inland toward Ramona, the daily temperature ranges may increase to 30 degrees or more. Strong winds and gales associated with Pacific or tropical storms are infrequent due to the latitude. The seasonal rainfall is about 10 inches in San Diego but increases to between 20 and 40 inches inland toward the mountains. Eighty-five percent of the precipitation occurs from November through March, with monthly and seasonal variations. The maximum 24 hour rainfall in San Diego was 2.6 inches and occurred in January. The prevailing direction of the winds is WNW at about 9 mph. Climatological data are summarized in Table 3-2.

Table 3-2 - CLIMATOLOGICAL DATA FOR SAN DIEGO, CALIFORNIA

Month	Temperature		Precipitation	Wind	
	Average Minimum (*F)	Average Maximum (*F)		Average Speed Miles/Hour	Average Direction
January	48	65	2.2	7	NW
February	50	66	1.6	8	WNW
March	52	66	1.9	9	WNW
April	55	68	0.8	9	WNW
May	58	69	0.2	8	WNW
June	61	72	0.1	8	WNW
July	65	76	trace amounts	8	WNW
August	66	77	0.1	8	WNW
September	65	77	0.2	8	WNW
October	60	74	0.4	8	WNW
November	53	71	1.1	8	WNW
December	49	66	1.4	7	NW
Average	57	71	9.9	8	WNW

### 3.3 GEOLOGY AND SOILS

#### 3.3.1 Geology and Physiology

The site is located in the Peninsular Ranges section of the Lower California physiographic province. This province is characterized by a dissected, westward-sloping, granite uplands. The Peninsular Ranges belong mostly to Mexico and only the northern end of the ranges reach into California. The province has distinct northwest grain expressed by its larger mountains, to the east of the site, and its longer valleys.

The province is underlain by large homogenous batholiths. These batholiths are igneous intrusive bodies which cooled slowly and deeply, allowing the molten material to crystallize into coarse-grained rock. The batholiths are accompanied by many dikes, narrow sheet-like igneous bodies which intruded into cracks in the rock.



Younger rocks found in the province are largely sedimentary, partly marine, and partly terrestrial, and range in age from late Cretaceous to Pleistocene. Marine rocks are exposed mostly in the Santa Ana Mountains, to the north of the site (Sharp 1976).

### 3.3.2 Soils

The soils of the site were derived from both the igneous bedrock and the overlying marine and alluvial sediment, which fill the basins in the bedrock. The soils are mostly sandy and fine-grained. The soils are deep and are rapidly permeable.

## 3.4 HYDROLOGY

### 3.4.1 Surface Water

Topography of the airport is generally flat, with an approximate elevation of 1390 National Geographic Vertical Datum (NGVD), though hills rise 50 to 60 higher in the bomb target area. The site drains towards the south to the Santa Maria Creek, which flows west and eventually empties into the Pacific Ocean at the Gulf of Santa Catalina, just north of San Diego. Flooding of a portion of the site may occur from heavy localized precipitation but would likely be of short duration. Most precipitation falls in the winter, except for an occasional thunderstorm in the mountains. The U.S. Geological Survey (USGS) maintains a stream gage on Santa Maria Creek near Ramona. The maximum flow at the gage site was 152,000 cubic feet per second (cfs).

### 3.4.2 Ground Water

The site is underlain by a regionally small, principal aquifer system, part of the Coastal Basins aquifer system. The Coastal Basin aquifers occupy a number of basins in coastal areas from northern to southern California. These basins are in structural depressions formed by folding and faulting. All of the basins are filled with marine and alluvial sediments and are drained by streams that contain water at least part of the year.

Ground water in the basins is under unconfined to confined conditions, and two or more vertically sequential aquifers can be present in a basin, separated by confining units that consist of fine-grained sediments. In nearly all basins that contain more than one aquifer, the aquifers are hydraulically connected to some degree.

Due to the large populations using these relatively small aquifers, surface water needs to be used as a water source for many people. Surface water, in many instances, has to be transported from distant sources to meet demand (Planert and Williams 1995).

## 3.5 ECOLOGY

The U.S. Fish and Wildlife Service reported that the following federally listed species occur in San Diego County: desert pupfish (*Cyprinodon macularius*), endangered; tidewater goby (*Eucyclogobius newberryi*), endangered; unarmored threespine stickleback (*Gasterosteus*

*aculeatus williamsoni*), endangered; arroyo southwestern toad (*Bufo microscaphus californicus*), endangered; Riverside fairy shrimp (*Streptocephalus woottoni*), endangered; Stephens kangaroo rat (*Dipodomys stephensi*), endangered; Peninsular bighorn sheep (*Ovis canadensis cremnobates*), proposed endangered; Pacific pocket mouse (*Perognathus longimembris pacificus*), endangered; western snowy plover (*Charadrius alexandrinus nivosus*), threatened; brown pelican (*Pelecanus occidentalis*), endangered; California gnatcatcher (*Polioptila californica*), threatened; California least tern (*Sterna antillarum* (=albifrons) *browni*), endangered; light-footed clapper rail (*Rallus longirostris levipes*), endangered; least Bell's vireo (*Vireo bellii pusillus*), endangered; California Orcutt grass (*Orcuttia californica*), endangered; San Diego thornmint (*Acanthomintha ilicifolia*), endangered; Peirson's milk-vetch (*Astragalus magdalenae* var. *peirsonii*), proposed endangered; coastal dunes milk-vetch (*Astragalus tener* var. *titi*), proposed endangered; Encinitas baccharis (*Baccharis vanessae*), endangered; thread-leaved brodiaea (*Brodiaea filifolia*), proposed threatened; Orcutt's spineflower (*Chorizanthe orcuttiana*), proposed endangered; salt marsh bird's-beak (*Cordylanthus maritimus* ssp. *maritimus*), endangered; Cuyamaca Lake downingia (*Downingia concolor* var. *brevior*), proposed endangered; short-leaved dudleya (*Dudleya blochmaniae* ssp. *brevifolia*), proposed endangered; San Diego button celery (*Eryngium aristulatum* var. *parishii*), endangered; Mexican flannelbush (*Fremontodendron mexicanum*), proposed endangered; Otay tarplant (*Hemizonia conjugens*), proposed endangered; Parish's meadowfoam (*Limnanthes gracilis* ssp. *parishii*), proposed threatened; willowy monardella (*Monardella linoides* ssp. *viminea*), proposed endangered; dehesa nolina (*Nolina interrata*), proposed threatened; San Diego mesa mint (*Pogogyne abramsii*), endangered; Otay mesa mint (*Pogogyne nudiuscula*), endangered; and Gambel's watercress (*Rorippa gambellii*), endangered.

The California Department of Fish and Game Natural Diversity Data Base records report that the following state-listed species occurs in the vicinity of the Ramona: least Bell's WP, endangered; San Diego thornmint, endangered; and Encinitas baccharis, endangered.

No additional information on the occurrence of rare or endangered species or natural communities is known at this time. This does not mean that other state or federally-listed species may not be present within the areas of interest. An on site inspection by appropriate state and federal personnel may be necessary to verify the presence, absence or location of listed species, or natural communities if remedial action is recommended as part of the final ASR.

### 3.6 DEMOGRAPHICS

#### 3.6.1 Centers of activity

The city of Ramona is located approximately two miles east of the airport in San Diego County, California.

#### 3.6.2 Business and Industry Profile

Based on a total of 59,896 establishments in San Diego County, the breakdown of industry is as follows:

-Manufacturing	5.9%
-Agriculture	2.0%
-Services	38.5%
-Trade and Finance	41.5%
-Other	12.1%

Of the people in the county employed by businesses, about 36.8 percent are employed by trade and finance businesses. Also prominent are service businesses at about 37.7 percent, manufacturing at 15.1 percent and transportation and construction at 9.3 percent. Foregoing percentages are at mid-March 1993.

### 3.6.3 Population density

Location	Population	Area (Square Miles)	Population Density (Square Miles)
Ramona	13,040	n/a	n/a
San Diego County	2,601,055	4,205	618.5

### 3.6.4 Types of Housing

Housing in Ramona is composed of both single family and multi-family dwellings. The median value of the 2,402 specified owner-occupied housing units in Ramona is \$166,800.

### 3.6.5 New Development in the Area

There is new commercial and residential development in Ramona.

### 3.6.6 Typical Cross Sections of the Population

<u>Ramona</u>	<u>Percentages</u>
● White	86.2
● Black	0.8
● American Indian, Eskimo or Aleut	1.6
● Asian or Pacific Islander	1.4
● Other	10.0

Persons of Hispanic origin comprise 18.1 percent of the total population in Ramona. Persons under the age of 18 encompass 32.5 percent and the population segment over the age of 65 constitutes 7.7 percent. The median age averages at 28.6 years.

## 4.0 SITE HISTORY

### 4.1 HISTORICAL SITE SUMMARY

#### 4.1.1 General Site History

On 15 October 1943, the Eleventh Naval District leased 155.7 acres to establish the **Ramona Bombing Target** for use by the Naval Air Center (NAC) San Diego. The Interdepartmental Air Traffic Control Board (IATCB) approved of the use of the site on 16 December that year. Presumably, the Eleventh Naval District began using the Ramona Bombing Target shortly thereafter. Although the target was assigned to NAC San Diego, it could "permit another unit to use such target." Therefore it is possible that other Naval or Marine Corps aviation facilities in the Eleventh Naval District used the site (Eleventh Naval District 1944a, 1944b, 1944d).

Eleventh Naval District fighter-bombers used the Ramona Bombing Target for dive bombing training. The site was set up as a practice bomb target with concentric circles simulating a destroyer deck. The target's center had coordinates of 33° 02' 00" Latitude and 116° 54' 48" Longitude (Eleventh Naval District 1944d)<sup>1</sup>.

The IATCB rescinded the Danger Area for the Dive Bombing Target at Ramona on 6 September 1944, in order for the Navy to construct a landing strip at that location (IATCB 1944).

After acquiring the required additional property, the Navy built one aircraft runway and a hangar building and the airstrip became the **Ramona Emergency Landing Field**. On 26 February 1947, San Diego County took possession of the airstrip and its facilities under lease NOy(R)-43693 with the Navy. When the lease expired, the county received a Revocable Permit on 27 February 1952. On 14 August 1956, the field was reported as excess to the General Services Administration. San Diego County received the property by Quitclaim Deed dated 28 December 1956, recording it on 9 May 1957. The property continues to operate as a civilian airport (GSA 1957b; USN 1952, 1956).

#### 4.1.2 Summary of Ordnance and Explosives Activities

The Eleventh Naval District designated practice bombs for use at the Ramona Bombing Target, though the archive search found no information specifying specific types (Eleventh Naval District 1945c).

The ASR site inspection team identified a fair amount of sheet metal debris, apparently from MK VII or MK XV 100 pound practice bombs. They also found a single cast iron, 3 pound

---

<sup>1</sup> The aerial photo analysis located the target center at coordinates N 33° 02' 10", W 116° 54' 51". The ASR site inspection noted it as N 33° 02' 12.2", W 116° 54' 53.5" with a GPS receiver.

miniature practice bomb (i.e. AN-MK 23). They did not find evidence of high explosives (HE) ordnance or of the 25 pound practice bombs described as recovered by law enforcement agencies during the INPR investigation. Furthermore, the archive search uncovered no documentation concerning ordnance usage or storage during the site's tenure as a emergency landing field.

#### 4.1.3 Summary of Chemical Warfare Material Activities

The archive search uncovered no documentation relating to CWM at Ramona Bombing Target and Emergency Landing Field. The archive search team found no indication that Ramona Bombing Target and Emergency Landing Field conducted CWM training, storage, or disposal.

#### 4.1.4 Certificates of Clearance

By March 1945, the Target Repair Crew of the Naval Air Station San Diego cleared the southern half of the bomb target and presumably the northern half also (Eleventh Naval District 1945a). The archives search did not find any specifics concerning this clearance or any other concerning this site.

### 4.2 REVIEW OF HISTORICAL RECORDS

Appendix A contains full references of all in text citations along with the location of the copied document. Concentration in three areas directed the research methodology for this report:

- locating documentation concerning the military use of the site
- compiling the types, quantities and probable locations of OE and/or CWM used by the military
- collecting real estate information

The research team searched at the following locations for records relating to OE and CWM activities at Ramona Bombing Target and Emergency Landing Field. At these repositories the research team used finding aids and records managers to assist in locating documents relevant to the research topic. The ASR team accumulated complementary documents reviewed on Ramona Bombing Target and Emergency Landing Field but not specifically used. These complementary documents are stored with the original ASR documents. Appendix H contains a lists of additional repositories and personnel contacted which reported no pertinent information.

#### 4.2.1 National Archives

**Eighth and Pennsylvania  
Washington, D.C. 20408  
POC: Rick Peuser  
202-501-5671**

The research team reviewed the finding aids for the applicable Record Groups and researched the following entries:

**Record Group 77 (Records of the Chief of Engineers)**

Entry 391 Construction Completion Reports, 1917-1943  
Boxes 14, 15

**Record Group 175 (Records of the Chemical Warfare Service)**

Entry 2 Index Briefs, 1918-October 1942

**4.2.2 National Archives at College Park**

**8601 Adelphi Road  
College Park, MD 20740  
POC: Rich Boylan  
301-713-6800**

The research team reviewed the finding aids for the applicable Record Groups and researched the following entries:

**Record Group 18 (Records of the Army Air Forces)**

Entry 1A Confidential and Secret Decimal Correspondence File, 1945-1948  
Boxes 255-265, 288-293

Entry 1B Project Decimal File, 1945  
Boxes 295-311

Entry 1E Project Decimal File, 1946-1947  
Boxes 675-683

Entry 2 Air Adjutant General Decimal File, 1944-1946  
Boxes 2255-2257, 2277-2281, 2308-2312

Entry 2C Air Adjutant General Decimal File, 1947  
Boxes 2797, 2798

Entry 2E Air Adjutant General Unclassified Decimal File, October 1942-1944  
Boxes 1590, 3191, 3192

Entry 46 Office of the Air Inspector, Central Decimal Correspondence File-  
Demobilization Inspections  
Boxes 20, 30-32, 91, 92, 109-111, 174, 175, 185

Entry 292 Air Adjutant General Unclassified Decimal File, October 1942-1944  
Boxes 1515, 1520, 1580, 1592

Entry 294 Air Adjutant General Formerly Security Classified Bulky Decimal Files,  
1942-1944  
Boxes 873, 881, 955, 976

Entry 299 Correspondence Relating to Foreign Bases, Air Forces, Misc. Commands,  
Districts, Government-Owned Plants, National Guard and Schools, 1939-1942  
Boxes 1140-1143, 1146, 1147, 1184-1189

**Record Group 38 (Records of the Office of the Chief of Naval Operations)**

Entry World War II War Diaries  
Boxes 427, 428, 534

**Record Group 40 (General Records of the Department of Commerce)**

Entry UD68 Office of the Secretary, Office of Strategic Information  
Box 1

**Record Group 71 (Records of the Bureau of Yards and Docks)**

Entry 74A Plans and Charts of Harbors, Naval Bases and Airfields, 1938-1954  
Box 2

Entry 1001 Naval Property Case Files, 1941-1958  
Boxes 46-62, 107-114, 119-121

Entry 1013 Minutes of Meetings of the Interdepartmental Air Traffic Control Board,  
1943-1946  
Boxes 1, 2

Entry 1017 Land Purchase Progress Reports, 1942-1945  
Box 1

Entry 1018 Index Cards Showing Congressional Approval of Projects, 1943-1945  
Boxes 1-4

Entry 1019 Miscellaneous Reports and Other Records Regarding Land Investigations  
Boxes 1-4

Entry 1031 Correspondence with Naval Districts, 1947-1948  
Boxes 1, 2, 8, 13, 14, 18, 22, 27, 31, 41

Entry 1037 Lease Files, 1941-1947  
Boxes 4-6

Entry Correspondence with Naval Districts, 1947-1948  
Boxes 55, 60, 64, 67

Record Group 72 (Records of the Bureau of Aeronautics)

Entry 62 General Correspondence, 1943-1945  
Boxes 2320, 3415, 3418

Entry 67 Confidential Correspondence, 1922-1947  
Boxes 273, 298

Entry 1001A Unclassified General Correspondence, 1948-1950  
Boxes 364-368

Entry 1001F Unclassified General Correspondence, 1954  
Boxes 211, 212

Entry 1001G Unclassified General Correspondence, 1955  
Boxes 228, 229

Entry 1001H Unclassified General Correspondence, 1956  
Box 216

Entry 1001I Unclassified General Correspondence, 1957  
Box 222

Entry Records Relating to Inactive Air Stations, 1943-1949  
Boxes 2, 3

Entry Unclassified General Correspondence, 1950  
Boxes 192-194

Entry Unclassified General Correspondence, 1956  
Box 220

Entry Unclassified General Correspondence, 1958  
Box 144

Record Group 77 (Records of the Office of the Chief of Engineers)

Entry 106B General Correspondence, 1918-1945  
Boxes 302-308, 704, 708, 709, 754, 824, 825



Entry 1011 Formerly Security-Classified Subject Files, 1940-1945  
Boxes 214, 218, 219, 262, 263, 458, 483, 484, 495, 496, 588-590, 765-768,  
770-772, 799, 850

Record Group 127 (Records of the U.S. Marine Corps)

Entry 237D War Diaries and Unit Histories  
Boxes 1-12

Entry 238D Formerly Top Secret General Correspondence, 1944-1945  
Boxes 1-3

Record Group 156 (Records of the Office of the Chief of Ordnance)

Entry Records Relating to Army Guided Missile Program, 1940-1962  
Boxes 4, 12

Record Group 175 (Records of the Chemical Warfare Service)

Entry Historian's Background Files  
Boxes 1-14

Record Group 237 (Records of the Federal Aviation Administration)

Entry 11 Specifications and Blueprints, 1941-1947  
Boxes 6, 13

Record Group 270 (Records of the War Assets Administration)

Entry UD3 Subject File, 1946-1949  
Box 113

Entry UD9 Subject File of Central Property Office, 1946-1947  
Boxes 19, 20

Entry UD13 Office Files of Jess Larson, 1942-1953  
Boxes 3, 4

Record Group 291 (Records of the Federal Property Resources Service)

Entry Records Relating to Excess Property, 1964-1965  
Box 1

Entry Real Property Disposal Case Files, 1962  
Boxes 20, 26, 28, 31

**Record Group 334 (Records of Interservice Agencies)**

Entry 8 Aeronautical Board History File, 1940-1948  
Boxes 33, 34

Entry 9 Army-Navy Civil Committee  
Boxes 47, 48

**Record Group 335 (Records of the Secretary of the Army)**

Entry 60 General Correspondence 1963-64-Assistant Secretary of the Army  
(Installations and Logistics)  
Box 93

**Record Group 341 (Records of the Headquarters U.S. Air Force)**

Entry 340 Air Coordination Committee, Civil  
Boxes 35-55

Entry 340B Department Chief of Staff Operations ACC and Civil Aviation  
Organization Documents, 1942-1953  
Boxes 56-76

**Record Group 407 (Records of the Adjutant General's Office 1917-)**

Entry Unclassified Project Decimal File, 1940-1945  
Boxes 4323, 4349, 4352, 4353, 4371, 4380, 4386, 4522, 4533

**Still Pictures Branch**

The research team reviewed the finding aids for the applicable Record Groups and researched the following entries:

**Record Group 71 (Records of the Bureau of Yards and Docks)**

Entry CP Construction and Aerial Views of Naval Public Works, Facilities, and  
Utilities, 1941-1953  
Boxes 36, 37, 68, 70, 71, 83, 84

Entry GS Lantern Slides: Photographs of U.S. and Foreign Naval Shore  
Establishments, 1896-1944 (District 11)  
Boxes 6, 7

**Record Group 80 (General Records of the Department of the Navy)**

Entry G General Photographs  
Photograph - 422695-422699 OLF Ramona, CAL., May 1948

## **Cartographic & Architectural Branch**

The research team also consulted *Aerial Photographs in the National Archives-Special List 25*, dated 1990, for the San Diego County. Using the indexes, the following imagery covers the site and was acquired:

Record Group 145 (Records of the U.S. Agricultural and Stabilization Conservation Service)

18 Apr 39	1:20,000	AXN-213 43-46,212 91-94
10 Apr 49	1:20,000	AXN-3F 30-35,100-105
02 Apr 53	1:20,000	AXN-5F 181-186,9M 28-32
09 Apr 64	1:20,000	AXN-3DD 228-233
26 May 68	1:24,000	AXN-5JJ 37-41
31 May 94	1:40,000	NAPP 6859 138-141

The research team also consulted the coverage overlays for the site in Record Group 373 (Records of the U.S. Defense Intelligence Agency) but did not find any imagery at a scale of 1:20,000 or better.

### **4.2.3 Washington National Records Center**

**4205 Suitland Road  
Suitland, MD 20409  
POC: Velecia Chance  
301-457-7010**

The research team reviewed the finding aids for the applicable Record Groups and researched the following entries:

Accession 77-A52-0259  
Boxes 44, 66, 86, 92

Accession 77-A53-325  
Boxes 32, 47, 63, 66

### **4.2.4 National Personnel Records Center**

**Military Records  
9700 Page Avenue  
St. Louis, MO 63132-5100  
POC: Wilson Sullivan  
314-538-4085**

The research team reviewed the finding aids for the applicable Record Groups and researched the following entries:

Accession 342-50A-4003  
Boxes 1-9

Accession 342-50C-4003  
Box 1

Accession 342-50F-4003  
Boxes 19, 20, 29

Accession 342-50H-4003  
Box 1

Accession 342-57H-3001  
Boxes 4-14

**4.2.5 U.S. Army Center of Military History**  
1099 14th Street  
Washington, D.C. 20005-3402  
POC: Robert K. Wright  
202-761-5416

The research team reviewed Historical Data Cards, Camp, Post and Station Files, and Historical Summaries.

**4.2.6 U.S. Army Military History Institute**  
Carlisle Barracks, PA 17013  
POC: Richard Summers  
717-245-3601

The research team reviewed photographs at the photo archive, conducted a database search in the library, reviewed base newspaper reels and reviewed the post historical files.

**4.2.7 Naval History Center Photographic Archive**  
Building 44, Washington Navy Yard  
Washington, D.C. 20374-5059  
POC: Jack Green, Archivist  
202-433-2765

The research team reviewed finding aids but found nothing pertinent for this site.

**4.2.8 Naval History Center Library**  
Building 44, Washington Navy Yard  
Washington, D.C. 20374-5059  
POC: Reference Librarian  
202-433-4132

The team acquired a copy of the 11th Naval District Administrative History in World War II on microfiche.

**4.2.9 Naval Aviation History Center**  
Building 157-1, Washington Navy Yard  
Washington, D.C. 20374-5059  
POC: Tod Baker  
202-433-4355

Aviation History Files, Air/Ground Establishments  
Folders 11th Naval District in World War II  
San Diego Naval Air Station, CA  
El Centro Naval Air Station, CA  
Salton Sea Test Base, CA

**4.2.10 U.S. Army Chemical-Biological Defense Command**  
Historical Office  
Building E5183  
Aberdeen Proving Ground, MD 21010-5423  
POC: Jeff Smart  
410-671-4430

The research team reviewed, the *Army Ordnance Magazine*, the *Chemical Warfare Service Bulletin* and the 9710 Technical Escort Files, copying applicable documents.

**4.2.11 Naval Construction Battalion Center**  
History Office  
1000 23rd Avenue  
Port Hueneme, CA 93043-4301  
POC: Carol Marsh  
805-983-5913

The research team reviewed geographic files, photographs, and 11th and 12th Naval District map books.

**4.2.12 Naval Construction Battalion Center**  
Civil Engineering Support Office (CESO) Building 1443  
Port Hueneme, CA 93043  
POC: Mona Leon-Guerroero  
805-982-3057

The research team reviewed construction drawings for the 11th and 12th Naval Districts.

**4.2.13 U.S. Air Force Historical Research Agency**

**USAFHRA\HO  
Maxwell AFB, AL 36112-6424  
POC: Archie Difante  
334-953-2447**

**U.S. Army Air Corps Records**

Box 260.277 Volume 1-2

Folder 260.277 Volume 1, Airport Directory, Continental  
United States, 1945

Box 196-6

Folder Civil Aeronautics Administration Directory of Airports  
1941

Box 7 170.424 March 1944-January 1945

Folder Miscellaneous Army Air Forces Installations and  
Activities 1944-1945

**4.2.14 Defense Technical Information Center**

**8725 Kingman Road, Suite 944  
Ft. Belvoir, VA 22060-6218**

The research team conducted an on-line database search for reports associated with the site.

**4.2.15 U.S. Army Corps of Engineers, Los Angeles, CA, District Office**

**Engineering Division, DERP POC  
911 Wilshire Boulevard  
Los Angeles, CA  
POC: Jeff Armentrout  
213-452-3720**

The team reviewed and copied the applicable backup files for Ramona Bombing Target, Ramona, CA, J09CA106900.

**4.2.16 National Archives - Pacific Southwest Region**

**24000 Avila Road, P.O. Box 6719  
Laguna Niguel, CA 92607-6719  
POC: Suzanne Dewberry, Archivist  
(714) 360-2641**

The research team reviewed the finding aids for the applicable Record Groups and researched the following entries:

Record Group 49 (Records of the Bureau of Land Management)

Entry Riverside, CA Land Office  
Books 32-36

Record Group 77 (Records of the Office of the Chief of Engineers)

Accession 77-96-0133, Audit Files  
Boxes 7, 11, 13

Accession 77-96-0134, Audit Files  
Box 8A

Record Group 181 (Records of Naval Districts and Shore Establishments)

Entry 63A0589 11th Naval District Commandant's Office Correspondence  
Boxes 196, 200, 210

Entry 63A600 11th Naval District Planning Officer Office Correspondence  
Boxes 38, 39

4.2.17 **Naval Facilities Engineering Command**  
**Southwest Division-Cadastral Section**  
**1220 Pacific Highway**  
**San Diego, CA 92132**  
**POC: Thomas H. Phelps**  
**(619) 532-1169**

The team researched the real estate files but found no applicable maps or documents.

4.2.18 **Naval Facilities Engineering Command, Engineering Field Activity West**  
**Regional Specialist Support Team (RSST)-Construction**  
**Building 205 and 207**  
**900 Commodore Drive**  
**San Bruno, CA 94066-2402**  
**POC: Mimi Chwang, Editorial Assistant (maps and drawing files)**  
**415-244-3030**

The research team reviewed the engineering design files and maps, which includes installations for the entire west coast but found nothing on the site.

4.2.19 **California State Archives Library**  
**1020 O Street**  
**Sacramento, CA 95814**  
**POC: Reference Librarian**  
**916-773-3000**

The research team reviewed the Master Finding Aid and the card catalog for this site.

**4.2.20 California State Library-California History Room**  
Library and Courts Building II  
900 N Street, Room 200  
Sacramento, CA 95814  
POC: reference librarian  
916-654-0176

The research team reviewed the map card catalog file and conducted an on-line database search for the site.

**4.2.21 University of California-Riverside**  
Library Building, P.O. Box 5900  
Riverside, CA 92517  
POC: Librarian  
760-787-3221

The team researched the on-line catalog and the Library Map Room.

**4.2.22 San Diego Public Library**  
820 E Street  
San Diego, CA 92101  
POC: Reference Librarian  
(619) 236-5830

The team researched the on-line computer catalog and the Vertical Files from the California Room.

**4.2.23 U.S. Department of Agriculture**  
Aerial Photography Field Office  
2222 W 2300 S  
Salt Lake City, Utah 84119-2020  
POC: Sharron McGiff  
801-975-3503

The research team reviewed photo-mosaics of available imagery using the county in which the installation is located and did not locate any pertinent coverage.

**4.2.24 U.S. Geological Survey**  
EROS Data Center  
Sioux Falls, South Dakota 57198  
POC: Kimberly Kringen  
605-594-6151 ext. 2075

The research team reviewed photo-mosaics of available imagery using the installation's geographic coordinates. They acquired the following pertinent coverage for Ramona Bombing Target:



15 Aug 71

1:30,000

GS-VCSQ2 106-108

#### 4.2.25 Whittier College

**Fairchild Aerial Photography Collection  
Department of Geology  
Whittier, California 90608  
POC: customer service  
310-907-4220**

The research team delineated the site's boundary on a USGS quad sheet requesting a list of available photo coverage and scale. The team did not acquire any imagery.

### 4.3 SUMMARY OF INTERVIEWS

The archive search team conducted telephone and personal interviews to assist in the collection of information for this report. Appendix H lists interviewees and copies of pertinent individual conversation records. The team did not locate any veterans of Ramona Bombing Target and Emergency Landing Field or persons with first hand knowledge of the former site use.

During the INPR investigation, interviews with local law enforcement "hazardous device" squads and military EOD units resulted in reports of the recovery of 1 lb., 2 lb. and 25 lb. practice bombs at the site in the past (Groundwater Technologies Government Services 1994). The archive search team questions the specific types of practice bombs cited based on the findings of the site inspection (see section 6.0). Presumably the "1 lb. and 2 lb. practice bombs" refers to the cast iron miniature practice bomb weighing just over 3 pounds. The report of the 25 lb. practice bombs is thought to be a misidentification of the 100 pound practice bombs debris present on site identified by the site inspection team.

### 4.4 AIR PHOTO INTERPRETATION AND MAP ANALYSIS

#### 4.4.1 Site Specific Map and Drawing Analysis

The archives search did not locate any site specific layout plans for the Ramona Bombing Target and only a Land Acquisition Map for the Ramona Emergency Landing Field (see Appendix E-13).

#### 4.4.2 Air Photo Interpretation

Government and contractor personnel conducted an aerial photography database search. The aerial photography retrieved covered Ramona Bombing Target and Emergency Landing Field during the time period prior to, during and following military use. The imagery acquired is in photographic print format. The analyst performed the interpretation using the following source materials:

Photo. Date

Approx. Scale

18 Apr 39	1:20,000
10 Apr 49	1:20,000
02 Apr 53	1:20,000
09 Apr 64	1:20,000
26 May 68	1:24,000
15 Aug 71	1:30,000
31 May 94	1:40,000

The analyst delineated imagery containing important areas on hard copy plots and digitized it using Computer-Aided Drafting and Design (CADD) software. The digitized features overlay scanned aerial photography, resulting in the final plots (see Plate 2). The analysis involved using stereo viewing of photography which allows more accurate identifications than monoscopic interpretations. Resolution and scale of the imagery limited the identification of features discussed in this study. The analyst used the word "probable" when discussing features for which identification is reasonably accurate. The analysis used the term "possible" when identification was not positive, but the object/area matched known features/locations on other sources. Analysis of the aerial photographs referenced the site maps discussed in sections 4.4.1 and 4.4.2 above. The bolded numbers in parentheses referenced in the sub-paragraphs below refer to the feature descriptions on the annotated aerial photography plates. The sub-paragraphs below describe the relevant features identified on the imagery:

**4.4.3.1 1939 Imagery** - The 1939 imagery shows the condition of the site prior to military Eleventh Naval District's of Ramona Bombing Target and Emergency Landing Field.

**4.4.3.2 1949 Imagery (Plate 2)** - By 1949, military use of the site has changed to an emergency landing field, though the former bomb target (1) is still discernable approximately one thousand feet south of the runway. The bombing target consists of two concentric circles with diameters of approximately 200 and 400 feet around a visible target center. The target center is at coordinates N 33° 02' 10", W 116° 54' 51". There are no distinct signs of cratering in the area.

**4.4.3.3 1953, 1964, 1968, and Remaining Imagery** - By 1953, the bombing target is no longer discernible but the airstrip appears essentially the same. Aerial imagery reviewed from later dates, 1964 and 1968, revealed no additional information of possible ordnance or military related functions, though the airfield developed over time.

## 5.0 REAL ESTATE

### 5.1 CONFIRMED DOD OWNERSHIP

The former **Ramona Bombing Target and Emergency Landing Field** consisted of a total of 404.74 acres. The Ramona Bombing Target included 155.7 acres and the Ramona Emergency Landing Field consisted of 326.54 acres (note: a 78.2 acres parcel is part of both the bomb target and the landing field).

The Eleventh Naval District initially leased two parcels totaling 155.7 acres for use as the Ramona Bombing Target on 15 October 1943 from private land owners. The two leases were:

NOy(R) 34981: with Robert A. Hawley for the S 1/2 of SE 1/4 of Section 18, Township 13 South, Range 1 East, totaling 78.2 acres.

NOy(R) 34982: with William J. Owen for the N 1/2 of NE 1/4 of Section 19, Township 13 South, Range 1 East, totaling 77.5 acres (NAC San Diego 1944).

In 1944 the Navy decided to build an emergency landing strip just to the north of the Ramona Bombing Target. The Navy canceled the lease for the southern portion, NOy(R) 34982 for 77.5 acres and vacated it by 5 March 1945 (USN 1945b)

In 1944, the Navy began acquiring 326.54 acres for the Ramona Emergency Landing Field. The land included 4 parcels acquired in fee from private land owners, including the northern portion of the bombing target. The property consisted of:

Township 13 South, Range 1 East

Section 18

E 1/2 of the SW 1/4

SE 1/4

Section 17

SW 1/4 of the SW 1/4

West 30 acres of the SE 1/4 of the SW 1/4

Section 20

North 400 feet of the N 1/2 of the NW 1/4

(Eleventh Naval District 1944c; GSA 1957a, 1957b).

On 26 February 1947, San Diego County took possession of the airstrip and its facilities under a lease NOy(R)-43693 with the Navy. When the lease expired the county received a Revocable Permit on 27 February 1952. On 14 August 1956, the field was reported as excess to the General Services Administration. San Diego County received the property by Quitclaim Deed dated 28 December 1956, and recorded on 9 May 1957 (GSA 1957b; USN 1952, 1956).

Based on a review of available real estate documents, the Department of the Navy released Ramona Bombing Target and Emergency Landing Field with no restrictive covenants or land

use restrictions. However, it did contain a recapture clause in the event of a national emergency (USN 1956).

This real estate figure does not concur with the acreage number stated in the INPR (Appendix D-1). The discrepancy results from not counting 77.5 acres from lease NOy(R) 34982 in the southern portion of the bomb target, which was not required for the airstrip.

## **5.2 POTENTIAL DOD OWNERSHIP**

The archive search did not identify any additional areas of potential or undocumented military ownership or land use associated with Ramona Bombing Target and Emergency Landing Field.

## **5.3 SIGNIFICANT PAST OWNERSHIP OTHER THAN DOD**

This investigation did not reveal any significant past ownership of Ramona Bombing Target and Emergency Landing Field with relationship to OE or CWM.

## **5.4 PRESENT OWNERSHIP**

The current property owners of the former Ramona Bombing Target and Emergency Landing Field are the County of San Diego for the airport and William J. Cagney Trust/Cagney Enterprises for the bomb target.

## 6.0 SITE INSPECTION

### 6.1 GENERAL PROCEDURES AND SCOPE

The ASR site inspection characterized OE and CWM potential based on a visual examination at Ramona Bombing Target and Emergency Landing Field. Land owners granted verbal permission for right-of-entry on privately owned property prior to the inspection. This inspection included only visual and non-intrusive methods of inspection. The team followed a site safety and health plan (SSHP) prohibiting digging or handling of potential OE/CWM. The SSHP defined standard operating procedures to ensure safety and to prevent accidents. Appendix L-1 contains a copy of the SSHP. The inspection team consisted of the following St. Louis District Corps of Engineers personnel: Jennifer J. James, William K. James and Randal S. Curtis. They performed a site survey of the former Ramona Bombing Target and Emergency Landing Field on 30 March 1998. Subsection 6.2 contains a synopsis of the site inspection and Appendix L-2 contains a detailed account. Appendix I includes current site photographs.

### 6.2 SITE INSPECTION SYNOPSIS

The team arrived at the Ramona Airport on 30 March 1998 at 1415. They scheduled an appointment with Rick Jenkins, Ramona Airport Manager (760-788-6174) and Theresa Morrison (714-640-0791), President of Cagney Enterprises. The inspection team briefed the property holders on the research findings and showed them the aerial photography with the bomb target highlighted. The bomb target is on Cagney Enterprises' property.

The team drove out on the former drag strip south of the airport runway. As they approached the fence line between Section 18 and 19, sheet metal debris was evident for about 250 feet along the fence line. The coordinates were N 33° 02' 12.2", W 116° 54' 53.5"². The sheet metal appeared to be from 100 pound practice bombs MK VII or XV. The team also found a single cast iron, 3 pound miniature practice bomb (i.e. AN-MK 23) at N 33° 02' 10.0", W 116° 54' 55.5". The team did not find any evidence of the 25 pound practice bombs described as recovered by law enforcement agencies during the INPR investigation.

The bomb target center consisted of 2 inch diameter steel pipe about 2 feet above ground surrounded by rocks at coordinates N 33° 02' 10.0", W 116° 54' 54.1". The team could not delineate the concentric circle surrounding the center. The site inspection team did not discover any fragmentation or cratering indicating the use of high explosives (HE) on the target.

---

<sup>2</sup> All coordinates were taken with a Trimble Scout GPS (Global Positioning Satellite) receiver using mapping datum WGS 1984.

## 7.0 EVALUATION OF ORDNANCE POTENTIAL

### 7.1 CONVENTIONAL ORDNANCE CONTAMINATION

The archive search uncovered evidence that the Eleventh Naval District utilized conventional ordnance at Ramona Bombing Target. The types of ordnance and explosives associated with the site included practice bombs. None of the reviewed information indicated any other ordnance related operations at Ramona Bombing Target or with the later Ramona Emergency Landing Field.

Aerial photography analysis located distinct evidence of a bombing target. The site inspection confirmed the target center and the presence of 100 pound practice bombs and 3 pound miniature practice bombs. All the OE debris found by the inspection team appeared to be expended and no complete rounds of any type were found. They did not find any evidence of the use of HE or of the 25 pound practice bombs as described as being recovered by law enforcement agencies during the INPR investigation.

### 7.2 CHEMICAL WARFARE MATERIAL CONTAMINATION

Based on this investigation, no evidence surfaced of chemical warfare materials storage, usage, or disposal at Ramona Bombing Target and Emergency Landing Field. Furthermore, the mission of Ramona Bombing Target and Emergency Landing Field does not imply the presence of CWM. Research discovered no historical records associating CWM with the site. Interviews did not disclose any correlation of CWM with the site. Additionally, the site inspection did not uncover any evidence of CWM hazards.

## 8.0 TECHNICAL DATA OF ORDNANCE AND EXPLOSIVES

### 8.1 POTENTIAL OE AND CWM ITEMS

The archive search associated practice bombs with the Ramona Bombing Target and Emergency Landing Field. The Navy used these items on the bomb target south of the current airstrip.

The archive search did not uncover evidence of the use of chemical warfare materials at Ramona Bombing Target and Emergency Landing Field. The Eleventh Naval District's activities at this site did not include the storage, the disposal, or the use of CWM in training.

### 8.2 DESCRIPTION OF CONVENTIONAL ORDNANCE

The following pages briefly show technical details of typical examples of OE items identified with the Ramona Bombing Target and Emergency Landing Field based on this archive search<sup>3</sup>:

Bombs, Miniature Practice, AN-MK 5 MOD 1, AN-MK 23, AN-MK 43 . . . . . 8-2  
Bomb, Practice, 100-lbs, MK 15 . . . . . 8-3

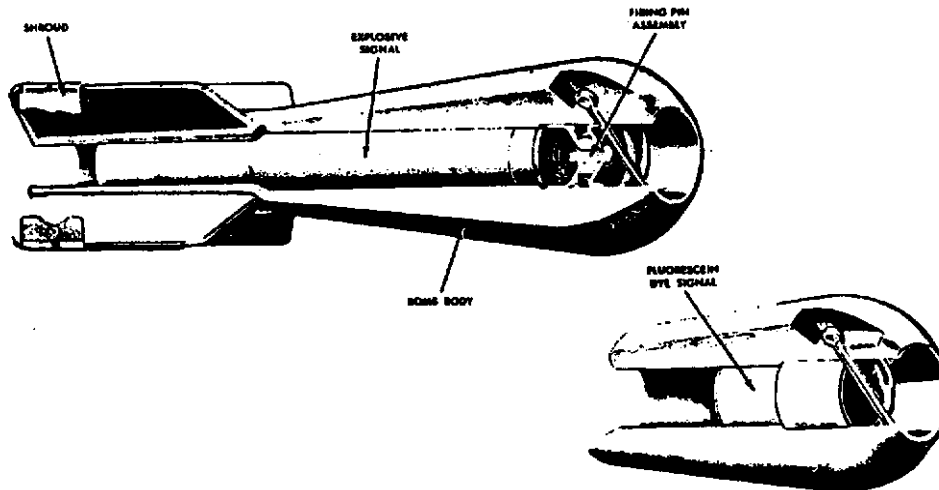
### 8.3 DESCRIPTION OF CHEMICAL WARFARE MATERIALS

The archive search did not uncover evidence of any CWM associated with the Ramona Bombing Target and Emergency Landing Field.

---

<sup>3</sup> The displayed items are general descriptions and may not include all the specific variations of a particular OE item. Furthermore, presentation of this list should not be construed that these items actually remain on site or that the OE items identified is a comprehensive list of what might actually have been used.

## MINIATURE PRACTICE BOMBS AN-MK 5 MOD 1, AN-MK 23, AN-MK 43



**Description:** These bombs are used for low-altitude horizontal, or dive bombing practice. The three bombs are similar in physical appearance, but differ basically in the metal used to cast the body. Bombs are used with the AN-Mk 4 practice bomb signal which is a blank 10 gauge shotgun shell (extended length). Signals contain a black powder expelling charge and a red phosphorous pyrotechnic mixture. These bombs also are used with the MK5 signal which contains a fluorescein dye and is actuated by impact on water. When the MK5 signal is installed, the firing pin assembly is not used.

<b>Over-all length:</b> .....	8.25 inches
<b>Body Diameter:</b> .....	2.18 inches
<b>Fin Dimension:</b> .....	2.5 inches
<b>Weight:</b> .....	AN-MK 5 Mod 1 - 2 lb. 11 oz. $\pm$ 1 oz AN-MK 23 - 3 lb. $\pm$ 2 oz AN-MK 43 - 4 lb. 7 oz. $\pm$ 2 oz.
<b>Signal:</b> .....	AN-Mk 4, Black powder/pyro- technic charge MK 5, Fluorescein dye

**Reference:** OP 1280, Aircraft Bombs, Feb 45  
 TM 9-1325-200, Bombs and Bomb Components, Apr 66



# BOMB, PRACTICE, 100-POUND, MK15

2-52. Bomb, Practice: 100-Pound, MK15 Mods 2, 3 and 4

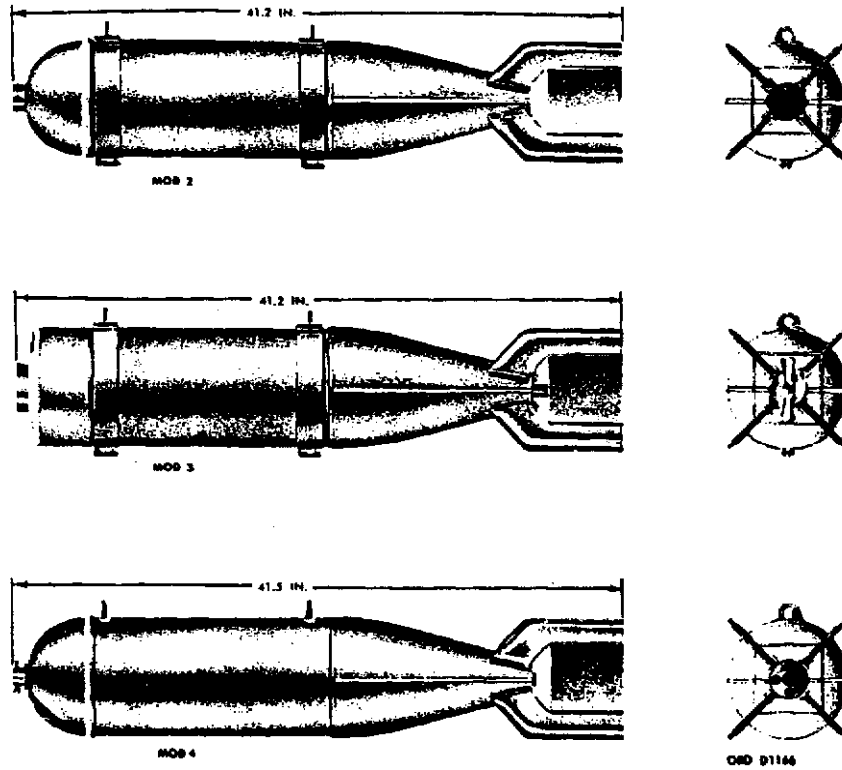


Figure 2-52. Bomb, practice: 100-pound, MK15 Mods 2, 3, and 4.

Table 2-50. Bomb, Practice: 100 pound, MK15 Mods 2, 3, and 4

Mark Mod	15 2	15 3	15 4
Length of Assembled bomb (in)...	41.2.....	41.2.....	41.5
Diameter of Body (in).....	8.0.....	8.0.....	8.0
Fin Span (in).....	.	.	11.24
Weight of Assembled Bomb (lb):	11.24.....	11.24.....	
Loaded with Wet Sand.....			97.0
Loaded with Water.....	100.0.....	100.0.....	60.0
	56.0.....	67.0.....	

Table 2-50. Bomb, Practice: 100 pound MK15 Mods 2, 3, and 4 - Continued

Mark Mod	15 2	15 3	15 4
Wet Sand Filler (lb).....	76.0.....	77.4.....	76.0
Water Filler (lb).....	39.0.....	40.0.....	39.0
Water Filler (gal).....	4.6.....	4.7.....	4.6
Signal.....	None.....	MK 7 Mod 0.....	MK 4 Mods 0,1,2,3,4
.....	None.....	MK 247 Mod 0.....	None
Fuze.....	None.....	None.....	MK 1 Mod 0
.....	MK 1 or AN-M6A2	MK 1 or AN-M6A2	No Arming Wire
Firing-Pin Assembly.....			
Arming-Wire Assembly.....			

a. *Description.* Practice bomb MK15 Mod 2 (fig. 2-62 and table 2-50) is identical to the Mod 3 except that it is not adapted for the use of a fuze and signal. It is filled with water or a mixture of sand and water (fig. 2-63) for spotting purposes. For training purposes, a small washer may be soldered to the nose of the bomb to simulate a fuze. The end of an arming wire (which is normally inserted in the fuze of service type bombs) is then secured to the washer. For armed releases, the washer is torn free of the bomb by the arming wire; for safe releases, the arming wire remains secured to the washer. When used against armored-deck target boats, it is filled with water and released from an altitude of less than 7,000 feet.

b. *Bomb, Practice: MK 15 Mod 3.* Practice bomb MK15 Mod 3 has a light cased, cylindrical body with a threaded filling hole in its rounded nose. A box-fin assembly consisting of four metal vanes attached to a cone is welded to the aft end of the body. The bomb has two metal suspension band assemblies (each consisting of a circular clamp, a suspension lug, and two cap screws) for tightening the band to the bomb. The bands may be adjusted for double suspension of the bomb by orienting to suit the rack or shackle to which the bomb is to be attached. A flat nose attachment that reduces ricochet of the bomb at entrance angles as low as 90 degrees is used during antisubmarine practice. The attachment is secured in place by a cap which threads onto the filling hose. The bomb is used with practice bomb signal MK7 Mod 0 and inert fuze MK247 Mod 0, both of which are secured to the aft end of the bomb.

c. *Bomb, Practice, 100-pound: MK15 Mod 4.* The practice bomb MK15 Mod 4 is a light-cased, cylindrical bomb with a round nose and an integral box fin and cone. A flash tube, extending throughout its transverse axis, housed a pyrotechnic signal and firing-pin assembly. Two suspension lugs are welded to the bomb body 14 inches apart. A filling hole is located off center on the bomb nose and is sealed by a filler cap similar to those used on automobile gas tanks. The firing-pin assembly consists of two shallow metal cups, separated by a spacer which housed the firing pin. A cotter-pin through the nose end of the flash tube and two recesses in the lip of the forward cup locks the firing-pin assembly and signal in place.

d. *Functioning.* Upon impact of the bomb with the target, the signal is detonated, producing a flash and a large puff of smoke, which permits observation of the bombing accuracy.

Reference:

TM 9-1325-200, Bombs and Bomb Components, April 1966

## **9.0 EVALUATION OF OTHER SITE INFORMATION**

The archive search did not reveal any additional areas of potential environmental concern associated with the military use of Ramona Bombing Target and Emergency Landing Field.

**APPENDIX A**  
**REFERENCES**

*The following list of references only represents the items cited in preparation of this report, and does not illustrate all the documents reviewed or copied for the backup files (see Records Review section 4.2 for further details). Source listings for locating each document are noted except where relatively widely available.*

## Section 2.0 PREVIOUS SITE INVESTIGATIONS

Corps of Engineers - Los Angeles District

1994 Inventory Project Report Findings of Facts - project no. J09CA1069, *Ramona Bombing Target and Emergency Landing Field*, Ramona, California, dated 6 August 1994.

Appendix D-1

## Section 3.2 CLIMATIC DATA

Federal Climate Complex - Ashville, NC

Department of the Navy

Fleet Numerical Meteorology and Oceanography Detachment

National Oceanic and Atmospheric Administration

National Climatic Data Center

U.S. Air Force Environmental Technical Application Center

## Sections 3.3 & 3.4.2 GEOLOGY, SOILS AND GROUND WATER HYDROLOGY

Planert, Michael and Williams, John S.

1995 *Ground Water Atlas of the United States, Segment 1; California, Nevada*. Hydrologic Investigations Atlas 730-B, US Geological Survey, Reston, VA.

Sharp, Robert P.

1976 *Southern California*. K/H Geology Field Guide Series, California Institute of Technology, Kendall/Hunt Publishing Company, Dubuque, IA.

## Section 3.4.1 SURFACE WATER HYDROLOGY

U.S. Geological Survey

1988 SAN PASQUAL, CALIF. Quadrangle, California-San Diego County, 7.5 Minute Series (topographic), dated 1954, photorevised 1988.

1997 Stream gage station #11028500 on Santa Marie Creek near Ramona, California. The period of record for this gage is 52 years, 1946 through 1997.

### Section 3.5 ECOLOGY

#### U.S. Fish and Wildlife Service

1997 Official correspondence dated 3 February 1997.

#### California Natural Heritage Data Base

1996 Computer software dated 23 September 1996.

### Section 3.6 DEMOGRAPHICS

#### U.S. Department of Commerce - Bureau of the Census

1990 *Census of Population and Housing - Ramona, California*, Summary Tape File 1A, from CD Rom

1994 *County and City Data Book, Land Area and Population - San Diego County, California*, Summary Tape File 1A, from CD Rom

1993 *County Business Patterns - San Diego County, California*, Summary Tape File 1A, from CD Rom

### Section 4.1 HISTORICAL SITE SUMMARY (cited references only)

#### General Services Administration

1957a Letter: *Ramona Emergency Landing Field, San Diego County, CA, N-Cal-572*, dated 14 January 1957. DERP INPR Backup Files, Folder J09CA106900 Ramona Bombing Site, CA. Engineering Division, U.S. Army Corps of Engineers, Los Angeles District, Los Angeles, CA.

Appendix E-1

1957b Transmittal Letter: *Ramona Emergency Landing Field - Quitclaim Deed and Certification of Recordation*, dated 29 May 1957. Record Group 121, Entry 9NSS-121-85-0008, Box 19, Folder H-Calif-572. National Archives and Records Administration-Pacific Sierra Region, San Bruno, CA.

Appendix E-2

#### Groundwater Technology Government Services, Inc.

1994 Telephone Conversations: *Background Information for DERP-FUDS Site No. J09CA106900 Ramona Bombing Target, Ramona, California*, dated 27 May 1994. DERP INPR Backup Files, Folder J09CA106900 Ramona Bombing Site, CA. Engineering Division, U.S. Army Corps of Engineers, Los Angeles District, Los Angeles, CA.

Appendix E-3

Interdepartmental Air Traffic Control Board

1944 Minutes: *Minutes to Meeting No. 522*, dated 6 September 1944. Record Group 71, Entry 1013 Minutes of the IATCB 1943-46, Box 1, Folder IATCB 1944. National Archives and Records Administration, Archives II, College Park, MD.

Appendix E-4

U.S. Navy

1952 Permit: *Revocable Permit, U.S. Navy with County of San Diego, CA*, dated 27 February 1952. Record Group 121, Entry 9NSS-121-85-0008, Box 19, Folder H-Calif-572. National Archives and Records Administration-Pacific Sierra Region, San Bruno, CA.

Appendix E-5

1956 *Report of Excess Real Property: Emergency Landing Field, Ramona, San Diego County, CA*, dated 14 August 1956. Record Group 121, Entry 9NSS-121-85-0008, Box 19, Folder H-Calif-572. National Archives and Records Administration-Pacific Sierra Region, San Bruno, CA.

Appendix E-6

U.S. Navy, Eleventh Naval District

1944a Letter: *Lease of Practice Bombing Target Site near Ramona, CA*, dated 17 January 1944. Record Group 71, Entry 1037 Lease Files, 1941-47, Box 4, Folder L5-7-50-3 Noy (R) 34982. National Archives and Records Administration, Archives II, College Park, MD.

Appendix E-7

1944b Letter: *Lease of Practice Bombing Target Site near Ramona, CA*, dated 4 March 1944. Record Group 71, Entry 1037 Lease Files, 1941-47, Box 4, Folder L5-7-50-3 Noy (R) 34982. National Archives and Records Administration, Archives II, College Park, MD.

Appendix E-8

1944c *Land Acquisition Map Ramona Landing Strip*, dated 23 August 1944. DERP-INPR Backup Files, Folder J09CA106900 Ramona Bombing Site, CA. Engineering Division, U.S. Army Corps of Engineers, Los Angeles District, CA.

Appendix E-9

1944d Letter: *Bombing Targets in Southern California Sector, Western Sea Frontier*, dated 24 August 1944. Record Group 181, Entry 11th Naval District Correspondence, Box 38, Folder NAB 11. National Archives and Records Administration-Pacific Southwest Region, Laguna Niguel, CA.

Appendix E-10

U.S. Navy, Eleventh Naval District

1945a Letter: *Lease Noy (R) - 34982 with William J. Owen, Ramona, CA - Site for Practice Bombing Target - Cancellation of*, dated 26 December 1944. Record Group 71, Entry 1037 Lease Files, 1941-47, Box 4, Folder L5-7-50-3 Noy (R) 34982. National Archives and Records Administration, Archives II, College Park, MD.

Appendix E-11

1945b Letter: *Lease Noy (R)-34982 with William J. Owen covering approximately 77.5 acres in San Diego County, CA - Release of*, dated 22 March 1945. Record Group 71, Entry 1037 Lease Files, 1941-47, Box 4, Folder L5-7-50-3 Noy (R) 34982. National Archives and Records Administration, Archives II, College Park, MD.

Appendix E-12

U.S. Navy, Naval Air Station, San Diego, CA

1944 Letter: *Requisition No. 231-44 Aero*, dated 13 January 1944. Record Group 71, Entry 1037 Lease Files, 1941-47, Box 4, Folder L5-7-50-3 Noy (R) 34982. National Archives and Records Administration, Archives II, College Park, MD.

Appendix E-13

Section 4.4 AIR PHOTO INTERPRETATION AND MAP ANALYSIS

U.S. Geological Survey

1988 SAN PASQUAL, CALIF. Quadrangle, California-San Diego County, 7.5 Minute Series (topographic), dated 1954, photorevised 1988.

Section 5.0 REAL ESTATE

Same references as section 4.1 above.

Section 8.0 TECHNICAL DATA OF ORDNANCE AND EXPLOSIVES

U.S. Army, Air Force and Navy

1966 *TM 9-1325-200, NAVWEPS OP 3530 & TO 11A-1-64, Bombs and Bomb Components*, dated April 1966.

U.S. Navy-Bureau of Ordnance

1945 *OP 1280 - Aircraft Bombs*, dated 17 February 1945.



**APPENDIX B**

**ABBREVIATIONS, ACRONYMS,  
AND BREVIETY CODES**

## ABBREVIATIONS, ACRONYMS AND BREVITY CODES

AAF*	Army Air Field
AA	Anti-Aircraft
ACGIH	American Conference of Governmental Industrial Hygienist
AEC	Army Environmental Center
AFB	Air Force Base
AMC	Army Materiel Command
AP	Armor Piercing
APDS	Armor Piercing Discarding Sabot
APERS	Anti-personnel
AP-T	Armor Piercing-Tracer
ASR	Archive Search Report
aux	auxiliary
BD	Base Detonating
BD/DR	Building Demolition/Debris Removal
BLM	Bureau of Land Management
BRAC	Base Realignment and Closure
CADD	Computer-Aided Drafting and Design
cal	Caliber
CBDA	Chemical and Biological Defense Agency
CBDCOM	Chemical and Biological Defense Command
CE	Corps of Engineers
CEHNC	Corps of Engineers, Huntsville Engineering and Support Center
CEMVS	Corps of Engineers, Mississippi Valley-St. Louis District
CERCLA	Comprehensive Environmental Response, Compensation and Liability Act
CERFA	Community Environmental Response Facilitation Act
CFR	Code of Federal Regulations
cfs	cubic feet per second
COE	Chief of Engineers
ctg	Cartridge
CWM	Chemical Warfare Material
CWS*	Chemical Warfare Service
DA	Department of the Army
DARCOM	Development and Readiness Command
DEET	Diethyltoluamide
DERA	Defense Environmental Restoration Account
DERP	Defense Environmental Restoration Program
DoD	Department of Defense
DOE	Department of Energy
DOI	Department of Interior
EE/CA	Engineering Evaluation/Cost Analysis
EIS	Environmental Impact Statement
EOD	Explosive Ordnance Disposal
EPA	Environmental Protection Agency
ERDA	Environmental Restoration Defense Account

FDE	Findings and Determination of Eligibility
FS	Feasibility Study
FUDS	Formerly Used Defense Sites
GIS	Geographic Information System
GPS	Global Positioning Satellite
GSA	General Services Administration
HE	High Explosive
HEAT	High Explosive Anti-Tank
HEI	High Explosive Incendiary
HEP	High Explosive Plastic
HTRW	Hazardous Toxic and Radioactive Waste
HTW	Hazardous and Toxic Waste
IAS	Initial Assessment Study
IATCB	Interdepartmental Air Traffic Control Board
INPR	Inventory Project Report
IRP	Installation Restoration Program
MCX	Mandatory Center of Expertise
MT	Mechanical Time
MTSQ	Mechanical Time Super Quick
NAC	Naval Air Center
NARA	National Archives and Records Administration
NAVSEA	Naval Sea Systems Command
NAS*	Naval Air Station
NCP	National Contingency Plan
NEW	Net Explosive Weight
NG	National Guard
NGVD	National Geographic Vertical Datum
NIMA	National Imagery and Mapping Agency
NIOSH	National Institute for Occupational Safety and Health
NMAS	National Map Accuracy Standards
NPL	National Priorities List
NOAA	National Oceanic and Atmospheric Administration
NOFA	No Further Action
NPRC	National Personnel Records Center
NRC	National Records Center
NWS	National Weather Service
OE	Ordnance and Explosives
OP	Ordnance Pamphlet
OSHA	Occupational Safety and Health Administration
PA	Preliminary Assessment
PD	Point Detonating
PIBD	Point Initiating, Base Detonating
PL	Public Law
PPE	Personal Protective Equipment
QASAS	Quality Assurance Specialist Ammunition Surveillance
RA	Removal Action

RAC	Risk Assessment Code
RD	Remedial Design
RG	Record Group
RI	Remedial Investigation
RI/FS	Remedial Investigation/Feasibility Study
SARA	Superfund Amendments and Reauthorization Act
SSHO	Site Safety and Health Officer
SSHP	Site Safety and Health Plan
SWMU	Solid Waste Management Units
TECOM	Test Evaluation Command
TEU	United States Army Technical Escort Unit
TM	Technical Manual
TNT	Trinitrotoluene
TP	Target Practice
U.S.	United States (of America)
USA	United States Army
USACE	U.S. Army Corps of Engineers
USADACS	U.S. Army Defense Ammunition Center and School
USAESCH	U.S. Army Engineering and Support Center, Huntsville, AL
USAFHRA	U.S. Air Force Historical Research Agency
USATCES	U.S. Army Technical Center for Explosive Safety
USATHMA	U.S. Army Toxic and Hazardous Materials Agency
USC	United States Code
USDA	U.S. Department of Agriculture
USGS	U.S. Geological Survey
UXO	Unexploded Ordnance
WAA*	War Assets Administration
WD*	War Department
WNRC	Washington National Records Center

\* designates a historic acronym

**APPENDIX C**  
**TEXT / MANUALS**  
**NOT USED**

**APPENDIX D**  
**REPORTS / STUDIES**

**REPORTS / STUDIES**

- D-1      Inventory Project Report Findings of Fact for Project No. J09CA1069,  
*Ramona Bombing Target and Emergency Landing Field*, Ramona, California,  
dated 6 August 1994.

## **APPENDIX D-1**

**Inventory Project Report Findings of Fact for  
Project No. J09CA1069, *Ramona Bombing Target  
and Emergency Landing Field*, Ramona, California,  
dated 6 August 1994.**



CESPD-ED-G (200-1c)

31 AUG '94

MEMORANDUM FOR

Commander, U.S. Army Corps of Engineers, 20 Massachusetts Avenue,  
N.W., Washington, DC 20314-1000

Commander, U.S. Army Engineer Division, Huntsville,  
P.O. Box 1600, Huntsville, Alabama 35807-4301

SUBJECT: Defense Environmental Restoration Program for Formerly  
Used Defense Sites (DERP-FUDS), Inventory Project Report (INPR)  
for Ramona Bombing Target, Ramona, California, Site No.  
J09CA106900

1. I am forwarding the INPR for Ramona Bombing Target for appropriate action. The site is eligible for DERP-FUDS.
2. I recommend that CEHND determine the need for further investigation and action at this site. CESPL has computed a RAC 2 on this project, but CESPL suggests a RAC 4 is more appropriate.

ORIGINAL SIGNED

Encl

MILTON HUNTER  
Brigadier General, U.S. Army  
Commanding

CF:

~~CESPL~~-ED-M (HTRW)

SEP - 1 1994



DEPARTMENT OF THE ARMY  
LOS ANGELES DISTRICT, CORPS OF ENGINEERS  
P.O. BOX 2711  
LOS ANGELES, CALIFORNIA 90053-2325

REPLY TO  
ATTENTION OF:

CESPL-ED-MI

14 JULY 1994

MEMORANDUM FOR Commander, South Pacific Division, ATTN:  
CESPD-ED-G, Vince Del Greco

SUBJECT: DERP-FUDS Inventory Project Report (INPR) for Site No.  
J09CA106900

1. Enclosed is the INPR for:

- J09CA106900 RAMONA BOMBING TARGET

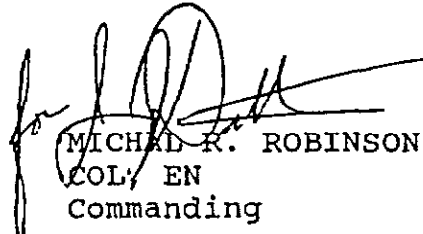
We determined that ordnance contamination (OEW) eligible under DERP-FUDS may exist.

2. I recommend the following:

a. Findings and Determination of Eligibility be approved and signed.

b. Forward a copy of this INPR to Commander, Huntsville Division to determine if further action is appropriate.

Encl

  
MICHAEL R. ROBINSON  
COL, EN  
Commanding

DEFENSE ENVIRONMENTAL RESTORATION PROGRAM  
FORMERLY USED DEFENSE SITES  
FINDINGS AND DETERMINATION OF ELIGIBILITY

RAMONA BOMBING TARGET  
RAMONA, CALIFORNIA  
SITE NO. J09CA106900

FINDINGS OF FACT

- 1) A total of 326.54 acres of land were acquired by the Department of the Navy for the Ramona Bombing Target and Landing Strip. The property was obtained by the Department of Defense (DOD) through a Declaration of Taking prior to 20 December 1944. The acquired property comprised of four parcels. They were obtained from private parties as follows: Parcel 1 - 77.85 acres - John S. Hawley III, Parcel 2 - 155.70 acres - Robert Alling Hawley, Parcel 3 - 68.75 acres - John S. Hawley III, and Parcel 4 - 24.24 acres - George and Emile Sawday.
- 2) The property was used by the Department of the Navy as both a bombing target and landing strip. Improvements made to the property during DOD occupation include one small "civilian-type" plane hanger and one asphaltic-concrete (AC) runway, 250 feet wide by 4,000 feet long. Use of the property by the Department of the Navy during World War II is indicated. Post World War II use of the property is not clear from the documentation.
- 3) On 6 August 1956, the property was declared excess by the Department of the Navy. Ownership of the property was transferred to the County of San Diego on 28 December 1956. At the time of disposal, the existing improvements were also transferred over to the County of San Diego. Currently, the majority of the original acreage (281.62 acres) of the former Navy property is owned by the County of San Diego. The southernmost portion of Parcels 1 (23.22 acres) and 2 (21.70 acres) is now owned by the William J. Casney Trust. The property is either maintained as a municipal airport or is undeveloped.

DETERMINATION

Based on the foregoing Findings of Fact, the site has been determined to have been formerly used by the Department of Defense. It is therefore eligible for the Defense Environmental Restoration Program - Formerly Used Defense Site established under 10 USC 2701 et seq.

DATE

30 Aug 74

for DEP/lt col  
MILTON HUNTER

Brigadier General, US Army  
Commanding

SITE SURVEY SUMMARY SHEET  
FOR  
DERP-FUDS SITE NO. J09CA106900

RAMONA BOMBING TARGET  
RAMONA, CALIFORNIA  
6 JULY 1994

**SITE NAME:** Ramona Bombing Target, Ramona, California, also known as Ramona Landing Strip, and Ramona Emergency Landing Field, San Diego County.

**LOCATION:** The site is located approximately two miles east of Main Street in Ramona, California. Directions to the site include: proceed northward on Montecito (later turns westward) approximately two miles then turn left onto Ramona Airport Road.

**SITE HISTORY:** By 1944, the Department of the Navy acquired 326.54 acres from private parties via a Declaration of Taking (or, condemnation). The property was acquired for use by the Navy as a bombing target and landing field. Reported improvements to the property included a small "civilian-type" hanger and a single runway (250 feet wide by 4,000 feet long).

Historical records indicate that the limited improvements to the property were transferred over to the County of San Diego when the County acquired the property on 28 December 1956. Currently, there are an estimated 30 buildings/structures at the site. However, the existing site contacts indicated that all of the current structures were built after the County acquired the airfield. While the County of San Diego owns the property, the buildings and structures are privately owned. Reportedly, the former runway still exist at the site and is used as a storage area for planes.

According to Jim Walker, OEW expert with the Army Corps of Engineers, expected ordnance at a bombing target such as this site would include small practice bombs (1 to 3 pound) and small to medium arms (0.50-caliber and 20 mm). Contacts were made to the Department of the Army 70th Ordnance Detachment, Explosive Ordnance Disposal (EOD); San Diego Sheriff's, Arsenal Group; and San Diego Fire Department, Metro Arsenal Strike Team (MAST) concerning records of ordnance found at the site. The agencies contacted (Appendix 3 of 3, Sections 2 and 3) described accounts of several instances (at least four) of practice bombs being recovered from the Ramona Airport. The records indicated that the recovered bombs ranged from 1 to 25 pounds. The available contacts did not contain any information regarding the location of the found ordnance.

**SITE VISIT:** A site visit was conducted on 17 May 1994 by Robert A. Davis, Jr. of Groundwater Technology, Inc., San Diego, California

SITE NO. J09CA106900

CATEGORY OF HAZARD: OEW, BD/DR (NOFA)

PROJECT DESCRIPTION:

a) OEW: Recommend the Mandatory Center of Expertise (MCX) for OEW at Huntsville Division make a determination regarding further investigation at this site.

b) BD/DR (NOFA): Historical records indicated that a single building was installed at the site by the Department of the Navy. While the records indicated that the building was transferred to the County of San Diego, the building was apparently torn down because it is not currently present at the site.

AVAILABLE STUDIES AND REPORTS:

National Archives and Records Administration, San Bruno, California - Mr. Bill Green provided access to records containing references and maps to Ramona Emergency Landing Field.

Pacific Executive Aviation, 2450 Montecito Road, Ramona, CA 92065 (619) 789-6384 - Ms. Jaye Matthews, Manager - provided a brief documentation of past and current history of the Ramona Airport.

California Department Forestry, Ramona Airport, Montecito Road, Ramona, CA 92065 (619) 789-1370 - Mr. William Meyers (contract pilot for the CDF) - provided access aerial photographs and photographs of the site from 1952 to the present.

DISTRICT POC: Jatin Desai, Los Angeles District (213) 894-6266.

PROJECT SURVEY SUMMARY SHEET  
FOR  
DERP-FUDS OEW PROJECT NO. J09CA106901

RAMONA BOMBING TARGET  
RAMONA, CALIFORNIA  
SITE NO. J09CA106900  
6 JULY 1994

**PROJECT DESCRIPTION:** The Ramona Bombing Target and Emergency Landing Field was used by the Department of the Navy as a bombing target and landing strip.

Reported ordnance found at the site consist of practice bombs ranging from 1 to 25 pounds. Recovered ordnance has been recovered as recently as May 1992. The reported practice bombs contained spotting charges and were disposed of either by the Army 70th Ordnance Detachment, Explosive Ordnance Disposal (EOD) or the San Diego County Sheriff's Department.

**PROJECT ELIGIBILITY:** The property was formerly owned and used by the DOD (U.S. Navy).

**POLICY CONSIDERATIONS:** No policy considerations are known to exist that would affect proposal of this project.

**PROPOSED PROJECT:** Recommend the Corps' Mandatory Center of Expertise (MCX) for OEW at the Huntsville Division make a determination if further action is required.

**RAC FORM:** Attached.

**DISTRICT POC:** Request CEHND inform Mr. Jatin Desai at (213) 894-6266 when a determination is made regarding the project status.

RISK ASSESSMENT PROCEDURES FOR  
ORDNANCE AND EXPLOSIVE WASTE (OEW) SITES

Site Name Ramona Bombing Target Rater's Name KATHLEEN S Gerber  
 Site Location Ramona California Phone No. (505) 242-8113  
 DERP Project # SO9CA 106900 Organization Groundwater Technology Government Services  
 Date Completed 27 May 1994 RAC Score RAC 2  
Reduced to RAC 4

OEW RISK ASSESSMENT:

This risk assessment procedure was developed in accordance with MIL-STD 882B and AR 385-10. The RAC score will be used by CEHND to prioritize the remedial action at this site. The OEW risk assessment should be based upon best available information resulting from records searches, reports of Explosive Ordnance Disposal (EOD) detachment actions, and field observations, interviews, and measurements. This information is used to assess the risk involved based upon the potential OEW hazards identified at the site. The risk assessment is composed of two factors, hazard severity and hazard probability. Personnel involved in visits to potential OEW sites should view the CEHND videotape entitled "A Life Threatening Encounter: OEW."

Part I. Hazard Severity. Hazard severity categories are defined to provide a qualitative measure of the worst credible mishap resulting from personnel exposure to various types and quantities of unexploded ordnance items.

TYPE OF ORDNANCE  
(Circle all values that apply)

A. Conventional Ordnance and Ammunition

	VALUE
Medium/Large Caliber (20 mm and larger)	(10)
Bombs, Explosive	10
Grenades, Hand and Rifle, Explosive	10
Landmines, Explosive	10
Rockets, Guided Missiles, Explosive	10
Detonators, Blasting Caps, Fuzes, Boosters, Bursterns	6
Bombs, Practice (w/spotting charges)	(6)
Grenades, Practice (w/spotting charges)	4
Landmines, Practice (w/spotting charges)	4
Small Arms (.22 cal - .50 cal)	(1)
Conventional Ordnance and Ammunition (Select the largest single value)	10

What evidence do you have regarding conventional OEW? Site use - Bombing target = Practice Bombs (1 to 25 pounds) have been recovered at the site. Small

B. Pyrotechnics (For munitions not described above.)

VALUE

Munition (Container) Containing  
White Phosphorus or other  
Pyrophoric Material (i.e.,  
Spontaneously Flammable)

10

Munition Containing A Flame  
or Incendiary Material (i.e.,  
Napalm, Triethylaluminum Metal  
Incendiaries)

6

Flares, Signals, Simulators

4

Pyrotechnics (Select the largest single value)

What evidence do you have regarding pyrotechnics? NO EVIDENCE OF  
Pyrotechnics Found

C. Bulk High Explosives (Not an integral part of conventional ordnance;  
uncontainerized.)

VALUE

Primary or Initiating Explosives  
(Lead Styphnate, Lead Azide,  
Nitroglycerin, Mercury Azide,  
Mercury Fulminate, Tetracene, etc.)

10

Demolition Charges

10

Secondary Explosives  
(PETN, Compositions A, B, C,  
Tetryl, TNT, RDX, HMX, HBX,  
Black Powder, etc.)

8

Military Dynamite

6

Less Sensitive Explosives  
(Ammonium Nitrate, Explosive D, etc.)

3

High Explosives (Select the largest single value)

What evidence do you have regarding bulk explosives? NO EVIDENCE OF  
Bulk explosives Found

D. Bulk Propellants (Not an integral part of rockets, guided missiles, or  
other conventional ordnance; uncontainerized)

VALUE

Solid or Liquid Propellants

6

Propellants

What evidence do you have regarding bulk propellants? NO EVIDENCE  
of bulk propellants Found



E. Radiological/Chemical Agent/Weapons

	VALUE
Toxic Chemical Agents (Choking, Nerve, Blood, Blister)	25
War Gas Identification Sets	20
Radiological	15
Riot Control and Miscellaneous (Vomiting, Tear, incendiary and smoke)	5
Radiological/Chemical Agent (Select the largest single value)	<u>0</u>
What evidence do you have of chemical/radiological OEW?	<u>NONE</u>

Total Hazard Severity Value 10  
 (Sum of Largest Values for A through E--Maximum of 61).  
 Apply this value to Table 1 to determine Hazard Severity Category.

TABLE 1

HAZARD SEVERITY\*

Description	Category	Value
CATASTROPHIC	I	≥21
CRITICAL	II	≥10 <21
MARGINAL	III	≥5 <10
NEGLIGIBLE	IV	≥1 <5
**NONE		0

\* Apply Hazard Severity Category to Table 3.

\*\*If Hazard Severity Value is 0, you do not need to complete Part II. Proceed to Part III and use a RAC Score of 5 to determine your appropriate action.

Part II. Hazard Probability. The probability that a hazard has been or will be created due to the presence and other rated factors of unexploded ordnance or explosive materials on a formerly used DOD site.

AREA, EXTENT, ACCESSIBILITY OF OEW HAZARD  
(Circle all values that apply)

A. Locations of OEW Hazards

	VALUE
On the surface	(5)
Within Tanks, Pipes, Vessels or Other confined locations.	4
Inside walls, ceilings, or other parts of Buildings or Structures.	3
Subsurface	(2)
Location (Select the single largest value)	<u>5</u>

What evidence do you have regarding location of OEW? practice Bombs are commonly found either on the surface or are buried to be and can be uncovered at a later date

B. Distance to nearest inhabited locations or structures likely to be at risk from OEW hazard (roads, parks, playgrounds, and buildings).

	VALUE
Less than 1250 feet	5
1250 feet to 0.5 miles	(4)
0.5 miles to 1.0 mile	3
1.0 mile to 2.0 miles	2
Over 2 miles	1
Distance (Select the single largest value)	<u>4</u>

What are the nearest inhabited structures? Rural Residential Area

C. Numbers of buildings within a 2 mile radius measured from the OEW hazard area, not the installation boundary.

	VALUE
26 and over	5
16 to 25	4
11 to 15	3
6 to 10	2
1 to 5	1
0	0

Number of Buildings (Select the single largest value)

5

Narrative While the area is rural more than 26 Buildings are located within a 2 mile radius of the site.

D. Types of Buildings (within a 2 mile radius)

	VALUE
Educational, Child Care, Residential, Hospitals, Hotels, Commercial, Shopping Centers	5
Industrial, Warehouse, etc.	4
Agricultural, Forestry, etc.	3
Detention, Correctional	2
No Buildings	0

Types of Buildings (Select the largest single value)

5

Describe types of buildings in the area. Predominant structures in the area are residential

E. Accessibility to site refers to access by humans to ordnance and explosive wastes. Use the following guidance:

BARRIER	VALUE
No barrier or security system	5
Barrier is incomplete (e.g., in disrepair or does not completely surround the site). Barrier is intended to deny egress from the site, as for a barbed wire fence for grazing.	4
A barrier, (any kind of fence in good repair) but no separate means to control entry. Barrier is intended to deny access to the site.	3
Security guard, but no barrier	(2)
Isolated site	1
A 24-hour surveillance system (e.g., television monitoring or surveillance by guards or facility personnel) which continuously monitors and controls entry onto the facility; or An artificial or natural barrier (e.g., a fence combined with a cliff), which completely surrounds the facility; and a means to control entry, at all times, through the gates or other entrances to the facility (e.g., an attendant, television monitors, locked entrances, or controlled roadway access to the facility).	0
Accessibility (Select the single largest value)	<u>2</u>

Describe the site accessibility. The site is an active airport  
*Access is to authorized individuals*

F. Site Dynamics - This deals with site conditions that are subject to change in the future, but may be stable at the present. Examples would be excessive soil erosion by beaches or streams, increasing land development that could reduce distances from the site to inhabited areas or otherwise increase accessibility.

	VALUE
Expected	5
None Anticipated	(0)
Site Dynamics (Select largest value)	<u>0</u>

Describe the site dynamics. No known change in site dynamics was identified during the research

-----  
 Total Hazard Probability Value  
 (Sum of Largest Values for A through F--Maximum of 30)  
 Apply this value to Hazard Probability Table 2 to determine  
 Hazard Probability Level.

21

TABLE 2

HAZARD PROBABILITY

Description	Level	Value
FREQUENT	A	≥27
PROBABLE	B	≥21 <27
OCCASIONAL	C	≥15 <21
REMOTE	D	≥ 8 <15
IMPROBABLE	E	<8

\* Apply Hazard Probability Level to Table 3.

Part III. Risk Assessment. The risk assessment value for this site is determined using the following Table 3. Enter with the results of the hazard probability and hazard severity values.

TABLE 3

Probability Level		FREQUENT A	PROBABLE B	OCCASIONAL C	REMOTE D	IMPROBABLE E
Severity Category:						
CATASTROPHIC	I	1	1	2	3	4
CRITICAL	II	1	2	3	4	5
MARGINAL	III	2	3	4	4	5
NEGLIGIBLE	IV	3	4	4	5	5

RISK ASSESSMENT CODE (RAC)

- RAC 1 Imminent Hazard - Expedite INPR - Immediately call CEHND-ED-SY--commercial 205-955-4968 or DSN 645-4968.
- RAC 2 High priority on completion of INPR - Recommend further action by CEHND.
- RAC 3 Complete INPR - Recommend further action by CEHND.
- RAC 4 Complete INPR - Recommend further action by CEHND.
- RAC 5 Recommend no further action. Submit NOFA and RAC to CEHND.

Part IV. Narrative. Summarize the documented evidence that supports this risk assessment. If no documented evidence was available, explain all the assumptions that you made.

See ATTACHED SUPPLEMENTAL INFO

SUPPLEMENTAL INFORMATION  
RISK ASSESSMENT PROCEDURES  
FOR  
DERP-FUDS OEW PROJECT NO. J09CA106901

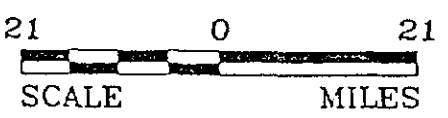
RAMONA BOMBING TARGET  
RAMONA, CALIFORNIA  
SITE NO. J09CA106900  
6 JULY 1994

An OEW risk assessment score of two (RAC 2) has been calculated based on a hazard severity category of II (Critical) and a probability level B (Probable). A RAC 2 requires further action by the U.S. Army Corps of Engineers Mandatory Center of Expertise (MCX) in Huntsville. This score is considered conservative for this site since the only ordnance found at the site have been practice bombs. Therefore a reduction of the RAC score to a RAC 4 is recommended.



INDEX TO MAPPED AREA

SOURCE: AUTOMOBILE CLUB OF SOUTHERN CALIFORNIA; CALIFORNIA ROAD MAP



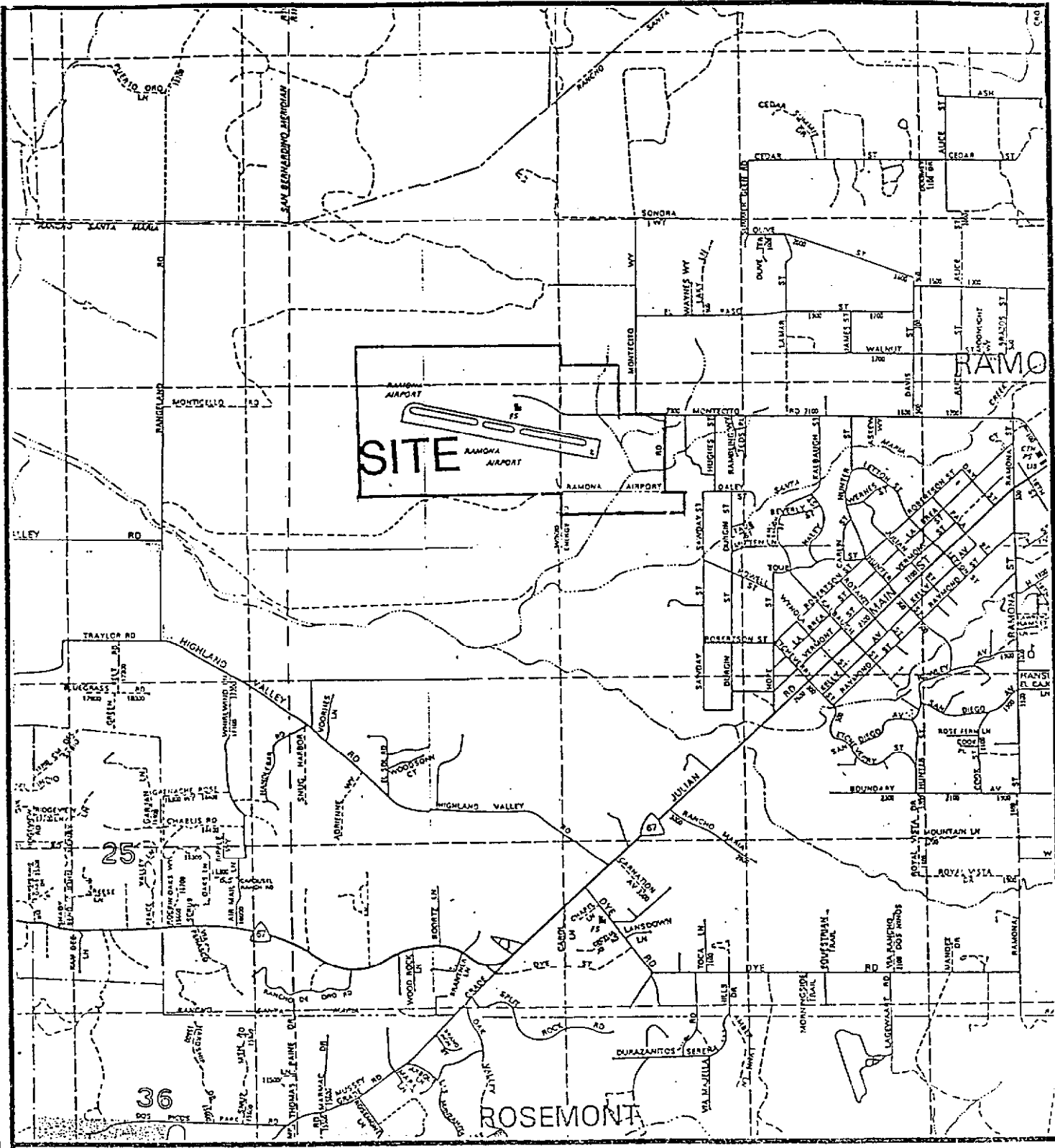
**BOMBING AREA  
RAMONA BOMBING TARGET**

JO9CA106900  
SAN DIEGO, CA

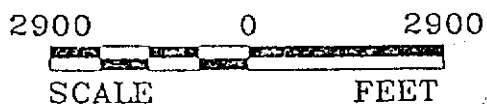
SITE INDEX MAP  
FIGURE 1

FILE: BASD-SIM





SOURCE: THOMAS GUIDE, SAN DIEGO COUNTY (1993)



**BOMBING AREA**  
**RAMONA BOMBING TARGET**  
 JO9CA106900  
 SAN DIEGO, CA

**SITE LOCATION MAP**  
**FIGURE 2**

**APPENDIX E**

**LETTERS / MEMORANDUMS  
/ MISCELLANEOUS ITEMS**

LETTERS / MEMORANDUMS / MISCELLANEOUS ITEMS

- E-1            General Services Administration  
Letter: *Ramona Emergency Landing Field, San Diego County, CA, N-Cal-572*, dated 14 January 1957. DERP INPR Backup Files, Folder J09CA106900 Ramona Bombing Site, CA. Engineering Division, U.S. Army Corps of Engineers, Los Angeles District, Los Angeles, CA.
- E-2            General Services Administration  
Transmittal Letter: *Ramona Emergency Landing Field - Quitclaim Deed and Certification of Recordation*, dated 29 May 1957. Record Group 121, Entry 9NSS-121-85-0008, Box 19, Folder H-Calif-572. National Archives and Records Administration-Pacific Sierra Region, San Bruno, CA.
- E-3            Groundwater Technology Government Services, Inc.  
Telephone Conversations: *Background Information for DERP-FUDS Site No. J09CA106900 Ramona Bombing Target, Ramona, California*, dated 27 May 1994. DERP INPR Backup Files, Folder J09CA106900 Ramona Bombing Site, CA. Engineering Division, U.S. Army Corps of Engineers, Los Angeles District, Los Angeles, CA.
- E-4            U.S. Navy  
*Report of Excess Real Property: Emergency Landing Field, Ramona, San Diego County, CA*, dated 14 August 1956. Record Group 121, Entry 9NSS-121-85-0008, Box 19, Folder H-Calif-572. National Archives and Records Administration-Pacific Sierra Region, San Bruno, CA.
- E-5            U.S. Navy  
Permit: *Revocable Permit, U.S. Navy with County of San Diego, CA*, dated 27 February 1952. Record Group 121, Entry 9NSS-121-85-0008, Box 19, Folder H-Calif-572. National Archives and Records Administration-Pacific Sierra Region, San Bruno, CA.
- E-6            U.S. Navy, Eleventh Naval District  
Letter: *Lease Noy (R)-34982 with William J. Owen covering approximately 77.5 acres in San Diego County, CA - Release of*, dated 22 March 1945. Record Group 71, Entry 1037 Lease Files, 1941-47, Box 4, Folder L5-7-50-3 Noy (R) 34982. National Archives and Records Administration, Archives II, College Park, MD.
- E-7            Interdepartmental Air Traffic Control Board  
Minutes: *Minutes to Meeting No. 522*, dated 6 September 1944. Record Group 71, Entry 1013 Minutes of the IATCB 1943-46, Box 1, Folder IATCB 1944. National Archives and Records Administration, Archives II, College Park, MD.

- E-8 U.S. Navy, Eleventh Naval District  
Letter: *Lease Noy (R) - 34982 with William J. Owen, Ramona, CA - Site for Practice Bombing Target - Cancellation of*, dated 26 December 1944. Record Group 71, Entry 1037 Lease Files, 1941-47, Box 4, Folder L5-7-50-3 Noy (R) 34982. National Archives and Records Administration, Archives II, College Park, MD.
- E-9 U.S. Navy, Eleventh Naval District  
Letter: *Bombing Targets in Southern California Sector, Western Sea Frontier*, dated 24 August 1944. Record Group 181, Entry 11th Naval District Correspondence, Box 38, Folder NAB 11. National Archives and Records Administration-Pacific Southwest Region, Laguna Niguel, CA.
- E-10 U.S. Navy, Eleventh Naval District  
Letter: *Lease of Practice Bombing Target Site near Ramona, CA*, dated 4 March 1944. Record Group 71, Entry 1037 Lease Files, 1941-47, Box 4, Folder L5-7-50-3 Noy (R) 34982. National Archives and Records Administration, Archives II, College Park, MD.
- E-11 U.S. Navy, Eleventh Naval District  
Letter: *Lease of Practice Bombing Target Site near Ramona, CA*, dated 17 January 1944. Record Group 71, Entry 1037 Lease Files, 1941-47, Box 4, Folder L5-7-50-3 Noy (R) 34982. National Archives and Records Administration, Archives II, College Park, MD.
- E-12 U.S. Navy, Naval Air Station, San Diego, CA  
Letter: *Requisition No. 231-44 Aero*, dated 13 January 1944. Record Group 71, Entry 1037 Lease Files, 1941-47, Box 4, Folder L5-7-50-3 Noy (R) 34982. National Archives and Records Administration, Archives II, College Park, MD.
- E-13 U.S. Navy, Eleventh Naval District  
*Land Acquisition Map Ramona Landing Strip*, dated 23 August 1944. DERP-INPR Backup Files, Folder J09CA106900 Ramona Bombing Site, CA. Engineering Division, U.S. Army Corps of Engineers, Los Angeles District, CA.

## APPENDIX E-1

**General Services Administration**  
**Letter: *Ramona Emergency Landing Field, San Diego County, CA, N-Cal-572*, dated 14 January 1957. DERP INPR Backup Files, Folder J09CA106900 Ramona Bombing Site, CA. Engineering Division, U.S. Army Corps of Engineers, Los Angeles District, Los Angeles, CA.**

Regional Counsel, MS 2

January 14, 1957

Chief, RPDD

Ramona Emergency Landing Field  
San Diego County, California  
N-Cal-572

Requests for Documents.

On December 20, 1956, the GSA accepted the application, dated November 20, 1956, of the County of San Diego, California, for property known as Ramona Emergency Landing Field for transfer for airport purposes.

The property consists of 326.54 acres of land improved by one small, civilian type frame hangar building and one A.C. runway. There is no personal property involved in the transfer.

The legal description of the property is as follows:

"All of those lands lying and being situate in the County of San Diego, State of California, more particularly described as follows:

"The east half of the southwest quarter of Section 18, Township 13 South, Range 1 East, S.B.M.; the southeast quarter of Section 18, Township 13 South, Range 1 East S.B.M.; the southwest quarter of the southwest quarter and the west 30 acres of the southeast quarter of the southwest quarter of Section 17, Township 13 South, Range 1 East, S.B.M.; the north 400 feet of the north half of the northwest quarter of Section 20, Township 13 South, Range 1 East, S.B.M., San Diego County, California, containing 326.54 acres of land, more or less."

It is requested that your office prepare the necessary documents transferring this property to the County of San Diego for use as a public airport.

*MJW*

## APPENDIX E-2

**General Services Administration  
Transmittal Letter: *Ramona Emergency Landing  
Field - Quitclaim Deed and Certification of  
Recordation*, dated 29 May 1957. Record Group  
121, Entry 9NSS-121-85-0008, Box 19, Folder  
H-Calif-572. National Archives and Records  
Administration-Pacific Sierra Region, San Bruno,  
CA.**

Regional Comptroller, GSA, Sta. 3

206  
May 29, 1957

Regional Counsel, GSA, Sta. 2

9L II Disposal (Gen'l)

Ramona Emergency Landing Field  
San Diego County, California  
N-Cal-572

Attached are the following documents in the above transaction:

1. Two conformed copies of Quitclaim Deed dated December 28, 1956, between the United States of America, Party of the First Part, and the County of San Diego, Party of the Second Part.
2. Original Certificate of Recordation and one conformed copy, certifying said Quitclaim Deed to have been recorded on May 9, 1957, (Doc. #69159), in Book 6571, at page 79, of the Official Records of the said County.

Kindly acknowledge receipt of above documents on the attached copy of this memorandum.

Attachments

Receipt is hereby acknowledged of the above with attachments  
on this \_\_\_\_\_ day of May, 1957.

  
CWHull

  
MM:res

File cc to E. L. Buttle, Actg. Chf., Disposal Branch, PBS - Sta. 33 with:  
Letter dated May 16, 1957, County of San Diego Board of  
Supervisors enclosing: *Certificate of Legal Adviser dated 5/2/57*  
Certified Copy of Resolution adopted by Bd of Supervisors of  
San Diego, accepting Q/Clm Deed conveying Ramona Emerg. Landing  
Field to said County for airport purposes;  
6 cc's Q/Clm Deed w/ 6 cc's Certif. of Recordation.

FOLLOW UP 6-15



## APPENDIX E-3

### U.S. Navy

***Report of Excess Real Property: Emergency Landing Field, Ramona, San Diego County, CA, dated 14 August 1956. Record Group 121, Entry 9NSS-121-85-0008, Box 19, Folder H-Calif-572. National Archives and Records Administration-Pacific Sierra Region, San Bruno, CA.***

**REPORT OF EXCESS  
REAL PROPERTY**

1. HOLDING AGENCY NO. **403**  
DATE RECEIVED (GSA use only) **8-20-56**  
2. DATE OF REPORT **8-14-56**  
GSA CONTROL NO. (GSA use only) **N-Calif-572**

3. TO (Furnish address of GSA regional offices)  
**General Services Administration  
49 Fourth Street  
San Francisco 3, California**

4. FROM (Name and address of holding agency)  
**Department of the Navy  
Washington 25, D. C.**

5. NAME AND ADDRESS OF REPRESENTATIVE TO BE CONTACTED  
**Real Estate Division  
Bureau of Yards and Docks  
Washington 25, D. C.**

6. NAME AND ADDRESS OF CUSTODIAN  
**District Public Works Officer 11ND  
1220 Pacific Highway  
San Diego 30, California**

7. PROPERTY IDENTIFICATION  
**Emergency Landing Field, Ramona, San Diego  
County, California**

8. PROPERTY ADDRESS (Give full location)  
**San Diego County, California**

9. SPACE DATA						10. LAND	
USE	NUMBER OF BUILDINGS (1)	FLOOR AREA (Sq. ft.) (2)	NUMBER OF FLOORS (3)	FLOOR LOAD CAPACITY (4)	CLEAR HEADROOM (5)	(From SF 118b)	ACRE <del>or square feet</del>
A. OFFICE						A. FEE	<b>326.54</b>
B. STORAGE						B. LEASED	
C. OTHER (See 9 F)	<b>1</b>					C. OTHER	
D. TOTAL (From SF 118a)	<b>1</b>					D. TOTAL	<b>326.54</b>
E. GOV'T INTEREST:			F. SPECIFY "OTHER" USE ENTERED IN C ABOVE				
(1) OWNER	<b>1</b>						
(2) TENANT							

11. COST TO GOVERNMENT			12. LEASEHOLD(S) DATA (Use separate sheet if necessary)	
ITEM	SCHEDULE	COST	A. TOTAL ANNUAL RENTAL	\$
A. BUILDINGS, STRUCTURES, UTILITIES, AND MISCELLANEOUS FACILITIES	A (Col. d)	<b>\$237,500</b>	B. ANNUAL RENT PER SQ. FT. OR ACRE	\$
B. LAND	B (Col. f)	<b>22,315</b>	C. DATE LEASE EXPIRES	
C. RELATED PERSONAL PROPERTY	C (Col. h)		D. NOTICE REQUIRED FOR RENEWAL	
D. TOTAL (Sum of 11A, 11B, and 11C)		<b>\$259,815</b>	E. TERMINAL DATE OF RENEWAL RIGHTS	
E. ANNUAL PROTECTION AND MAINTENANCE COST (Government-owned or leased)			F. ANNUAL RENEWAL RENT PER SQ. FT. OR ACRE	\$
			G. TERMINATION RIGHTS (in days)	
			LESSOR	GOVERNMENT

13. DISPOSITION OF PROCEEDS

14. TYPE OF CONSTRUCTION

15. HOLDING AGENCY USE  
**Airfield**

16. RANGE OF POSSIBLE USES

17. NAMES AND ADDRESSES OF INTERESTED FEDERAL AGENCIES AND OTHER INTERESTED PARTIES  
**County of San Diego  
San Diego, California**

18. REMARKS  
**There is no known defense need for this property within the Department of Defense and the requirements of Title VI Public Law 155, 82nd Congress (65 Stat. 365) have been met.  
The County of San Diego is presently using the Airfield as a public airport (see Exhibit "A")**

19. REPORT AUTHORITY  
**WRIGHT**

NAME **Acting Manager, Disposal Branch**  
TITLE **Land Management & Disposal Division**  
**By direction of Chief of Bureau**

SIGNATURE *Wright*

## BUILDINGS, STRUCTURES, UTILITIES, AND MISCELLANEOUS FACILITIES

### SCHEDULE A—SUPPLEMENT TO REPORT OF EXCESS REAL PROPERTY

1. HOLDING AGENCY NO.

403

2. **1** OF **1** PAGES  
 OF THIS SCHEDULE

GSA CONTROL NO. (GSA use  
 only) *N-calif-572*

3. ANNUAL RENTAL

LINE NO. (a)	HOLDING AGENCY BUILDING NO. (b)	DESCRIPTION (c)	COST (d)	OUTSIDE DIMENSIONS (e)	FLOOR AREA (Sq. ft.) (f)*	NO. OF FLOORS (g)*	CLEAR HEAD-ROOM (h)*	FLOOR LOAD RANGE (i)*	RESTRICTIONS ON USE OR TRANSFER OF GOVERNMENT INTEREST (j)
1		<del>Small civilian-type frame hangar</del>	<del>-----</del>						This property is reported excess for disposal subject to the condition that it be used as an airport and to recapture by the Department of the Navy in any national emergency.
2									
3		One AC Runway 4000' long	237,500 <sup>1</sup>	250'X4000'					
6									
7									
8									
9									
10									
11									
12									
13									
14									
15									
16									
17									
18									
19									
20									
21									
22									
23									
24									
25									
26									
27									
28									
29		1. Includes cost of hangar							
30									
31									
32									
TOTAL			237,500						

\*Prefix figures with symbols to denote type of space, as follows: (a) for office; (b) for storage; (c) for other.

**LAND**

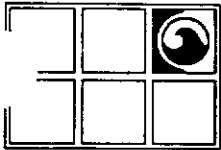
**SCHEDULE B—SUPPLEMENT TO REPORT OF EXCESS REAL PROPERTY**

1. HOLDING AGENCY NO. <b>403</b>		2. PAGE <b>1</b> OF <b>1</b> PAGES OF THIS SCHEDULE	
3. GOVERNMENT INTEREST		GSA CONTROL NO. (GSA use only)	
<input type="checkbox"/> LEASE	<input type="checkbox"/> LICENSE	<i>N Calif 572</i>	
<input type="checkbox"/> PERMIT	<input type="checkbox"/> EASEMENT INFORMAL AGREEMENT		
<input checked="" type="checkbox"/> FEE			

LINE NO. (a)	TRACT NO. (b)	NAME OF FORMER OWNER OR LESSOR AND ADDRESS (c)	TRACT ACQUIRED (Acres or more) (d)	EXCESS REAL PROPERTY			TYPE OF ACQUISITION (h)	RESTRICTIONS ON USE OR TRANSFER OF GOVERNMENT INTEREST (i)
				ACRES OR MORE (e)	COST (f)	ANNUAL RENTAL (g)		
1	4	George Sawday and Emily Sawday, joint tenants	24.24	24.24	1,315.00	---	Condemnation - No. 520-SD Civil the United States of America vs 440.14 acres of land, more or less, in the County of San Diego, State of California; Palmer Conner, et al. In the District Court of the United States in and for the Southern District of California Southern Division.	
2								
3								
4								
5								
6								
7								
8								
9								
10	1-3	John S. Hawley III	146.60	146.60	11,000.00	---	Same An easement for road purposes over that portion of described in Road Survey No. 152 and easement for road and incidental purposes over that portion of land lying in Road Survey No. 721.	
11								
12								
13								
14								
15								
16	2	Robert Alling Hawley	155.70	155.70	10,000.00	---	Same Easement for road purposes, and incidental purposes over that portion of said land lying in Road Survey No. 152  This property is reported excess subject to its continued use as an airport and subject to recapture of use by the Department of the Navy in the event of national emergency.	
17								
18								
19								
20								
21								
22								
23								
24								
25								
26								
27								
28								
29								
30								
31								
32								
TOTAL			326.54	326.54	22,315.00			

## APPENDIX E-3

**Groundwater Technology  
Government Services, Inc.  
Telephone Conversations: *Background  
Information for DERP-FUDS Site No.  
J09CA106900 Ramona Bombing Target,  
Ramona, California*, dated 27 May 1994. DERP  
INPR Backup Files, Folder J09CA106900 Ramona  
Bombing Site, CA. Engineering Division, U.S.  
Army Corps of Engineers, Los Angeles District,  
Los Angeles, CA.**



**GROUNDWATER  
TECHNOLOGY  
GOVERNMENT SERVICES**

Groundwater Technology Government Services, Inc.  
2501 Yale Blvd. SE, Suite 204, Albuquerque, NM 87106

**BACKGROUND INFORMATION  
FOR  
DERP-FUDS SITE NO. J09CA106900  
RAMONA BOMBING TARGET  
RAMONA, CALIFORNIA**

**27 MAY 1994**

(Appendix 3 of 3)

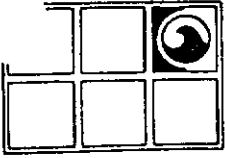
Prepared for:

Mr. Jatin Desai  
Installation Support Section, Room 6003  
Department of the Army  
Los Angeles District Corps of Engineers  
P.O. Box 2711  
Los Angeles, CA 90053-2325

Prepared by:

Groundwater Technology Government Services, Inc.  
2501 Yale Boulevard S.E., #204  
Albuquerque, New Mexico  
(505) 242-3113

Border Field  
Bombing Area  
Borrego Springs



GROUNDWATER  
TECHNOLOGY  
GOVERNMENT SERVICES

Groundwater Technology Government Services,  
2501 Yale Blvd. SE, Suite 204, Albuquerque, NM 87106  
Tel: (505) 242-3113 Fax: (505) 242-1103

Name: KATHY Gerber Date: \_\_\_\_\_

Made Call ( ) Received Call ( ) Returned Call ( )

Contact: Sheriff ARSINAL  
Name: Bill CRUZEN (4 years) Project Name: \_\_\_\_\_  
Address: (Boss Sergeant Conrad Graben (15 years)) Project No: \_\_\_\_\_  
Phone No: (619) 692-5020

SUMMARY OF CONVERSATION:

11/20/94  
p15

RE: soiled OEW at our DEEP-FWD sites  
Border Field => some OEW has been picked up  
(stuff) from Border Field  
and mostly Flares (sea flares) that wash ashore  
San Diego Fire Dept? from the night time training that  
is going on at Bean Field

Rosedale = Keene Mesa = Mont Somer Field  
(Fire Dept) Historical Airfield may have been removed to  
install the freeway = Just north on Keene Mesa  
1103 = Drone Planes  
5215 South MIRAMAR

Ramona => Recovered lots of Bombs (E)  
w/ spotting chart  
21b practice  
11b practice  
251b practice (30 inches long)

(over)

the 70th EOD has explosive ordnance reconnaissance  
classes

given couple to land survey

- he will Fax a class work sheet

They can track my request back 5-6 years

Borden Field BT

Kenny Mass BT

Ranona Airport = He is <sup>aware</sup> ~~aware~~ that the 70th EOD  
has picked up a couple of

1-pound practice Bombs over the last  
(w/ spotting charge) couple of years  
should have a signal cartridge

↑ could hurt but should not kill a person

He will follow up on Friday

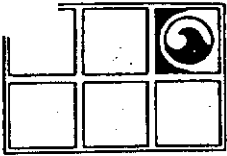
5/25/94 525 He has been real busy = HE should  
be able to get my request completed  
by Wednesday

Command 70th ORD DET (EOD)

PO Box 6376

SAN Diego CA 92166-0376





**GROUNDWATER  
TECHNOLOGY  
GOVERNMENT SERVICES**

Groundwater Technology Government Services, Inc.  
2501 Yale Blvd. SE, Suite 204, Albuquerque, NM 87106  
Tel: (505) 242-3113 Fax: (505) 242-1103

Name: Kathy Gerber Date: \_\_\_\_\_

Made Call ( ) Received Call ( ) Returned Call ( )

Contact:

Name: Sergeant Godfrey Project Name: \_\_\_\_\_

Address: Dept of Army 70th Project No: \_\_\_\_\_

Phone No: (619) 553-8500 EOD Fax (619) 553-8095

**SUMMARY OF CONVERSATION:**

4/20/94 345 the 70th EOD covers  
Riverside / Imperial so [??] San Bernardino Counties  
Arizona

I ~~am~~ ASKED IF they have info on clearance in the  
areas of our sites

Camp Iron Mtn Do not have records  
they do maintain records of sited ordinance  
But they need to go through the records  
IN R16, 17, 18 E } IRON Mtn  
IS R16, 17, 18 E }

Anzo Borrego (we are not researching the Carrizo  
Impact area)

~~As~~ The incident reports do not usually  
stipulate the specific area  
(they generally just state Anzo Borrego)  
500 lb Bomb on Incident Sheet

= the search will take a couple of days  
More practice Bombs kill people during  
search times

70th ORDNANCE DETACHMENT  
(EXPLOSIVE ORDNANCE DISPOSAL)



CALIFORNIA

PO BOX-6376  
SAN DIEGO, CA 92106-0376

PHONE (619) 553-8500  
FAX (619) 5538095  
DSN 553-8500

TO: Ms. Kathy Gerbers FAX: \_\_\_\_\_

FROM: SFC D. Hunt DATE: 27 Apr 94

NUMBER OF PAGES INCLUDING HEADER: 9

CONFIRMATION: (619) 553-8500

SUBJECT: This is all we have still on file for those  
areas your office was concerned about. Sorry for the  
delay!!

SFC H

EXPLOSIVE INCIDENT REPORT | 1. UNIT NUMBER | 2. CONTROL NUMBER | UNUSUAL: | ROUTINE: X

5. DATE TIME REPORTED: 081000MAY92 | 9. INCIDENT LOCATION: RAMONA AIRPORT | 11. ITEM(S) REPORTED: BOMB, PRACTICE

6. REPORTED BY: DEP GONZALES

7. PHONE NUMBER: (619)789-8178

10. POINT OF CONTACT: MR F. MOODY

8. AGENCY/ORGANIZATION: SDSO

12. PERSONNEL DISPATCHED: SFC HURTLE, SPC GODFREY

13. DATE/TIME: A. DEPART 081050MAY92

14. TRAVEL DATA: A. AIR: (HOURS)

15. HOURS: A: TRAVEL:

B. ARRIVE 081150MAY92

B. VEH: (MILES)

B: INCID. 8

C. COMPLETE 081355MAY92

16. CONFIRMED IDENTIFICATION: 1 BOMB, US, 1LB, PRAC

17. DISPOSITION: SCRAP

18. INCIDENT NARRATIVE:

DODIC/NOMENCLATURE	LOT #	QTY
#023/CHARGE, DEMO C-4		
#130/CAP, BLASTING, ELEC		
#456/CORD, REMONATING		
#766/IGNITER, TIME, #60		
#670/FUSE, BLASTING TIME		
#131/CAP, BLASTING, N/E		

AUTHENTICATION

TEAM LEADER, NAME, RANK, SIGNATURE AND DATE: DAVID L. HURTLE, SFC [Signature] 14 May 92

COMMANDER, NAME, RANK, SIGNATURE AND DATE: LITTMAN, Evan K., CPT, OD

## **APPENDIX E-4**

### **U.S. Navy**

***Report of Excess Real Property: Emergency  
Landing Field, Ramona, San Diego County, CA,  
dated 14 August 1956. Record Group 121, Entry  
9NSS-121-85-0008, Box 19, Folder H-Calif-572.  
National Archives and Records Administration-  
Pacific Sierra Region, San Bruno, CA.***

**REPORT OF EXCESS  
 REAL PROPERTY**

1. HOLDING AGENCY NO. **403** DATE RECEIVED (GSA use only) **8-20-56**  
 2. DATE OF REPORT **8-14-56** GSA CONTROL NO. (GSA use only) **N-Calif-572**

3. TO (Furnish address of GSA regional offices)  
 General Services Administration  
 49 Fourth Street  
 San Francisco 3, California

5. NAME AND ADDRESS OF REPRESENTATIVE TO BE CONTACTED  
 Real Estate Division  
 Bureau of Yards and Docks  
 Washington 25, D. C.

7. PROPERTY IDENTIFICATION  
 Emergency Landing Field, Ramona, San Diego  
 County, California

4. FROM (Name and address of holding agency)  
 Department of the Navy  
 Washington 25, D. C.

6. NAME AND ADDRESS OF CUSTODIAN  
 District Public Works Officer 11ND  
 1220 Pacific Highway  
 San Diego 30, California

8. PROPERTY ADDRESS (Give full location)  
 San Diego County, California

9. SPACE DATA						10. LAND	
USE	NUMBER OF BUILDINGS (1)	FLOOR AREA (Sq. ft.) (2)	NUMBER OF FLOORS (3)	FLOOR LOAD CAPACITY (4)	CLEAR HEADROOM (5)	(From SF 118b) A. FEE	ACRE <del>BY</del> <del>TO</del> <del>GOVERNMENT</del> 326.54
A. OFFICE						A. FEE	326.54
B. STORAGE						B. LEASED	
C. OTHER (See 9 F)	1					C. OTHER	
D. TOTAL (From SF 118a)	1					D. TOTAL	326.54
E. GOV'T INTEREST:			F. SPECIFY "OTHER" USE ENTERED IN C ABOVE				
(1) OWNER	1						
(2) TENANT							

11. COST TO GOVERNMENT			12. LEASEHOLD(S) DATA (Use separate sheet if necessary)	
ITEM	SCHEDULE	COST	A. TOTAL ANNUAL RENTAL	\$
A. BUILDINGS, STRUCTURES, UTILITIES, AND MISCELLANEOUS FACILITIES	A (Col. d)	\$ 237,500	B. ANNUAL RENT PER SQ. FT. OR ACRE	\$
B. LAND	B (Col. f)	22,315	C. DATE LEASE EXPIRES	
C. RELATED PERSONAL PROPERTY	C (Col. h)		D. NOTICE REQUIRED FOR RENEWAL	
D. TOTAL (Sum of 11A, 11B, and 11C)		\$ 259,815	E. TERMINAL DATE OF RENEWAL RIGHTS	
E. ANNUAL PROTECTION AND MAINTENANCE COST (Government-owned or leased)			F. ANNUAL RENEWAL RENT PER SQ. FT. OR ACRE	\$
			G. TERMINATION RIGHTS (in days)	
			LESSOR	GOVERNMENT
13. DISPOSITION OF PROCEEDS			14. TYPE OF CONSTRUCTION	
15. HOLDING AGENCY USE			16. RANGE OF POSSIBLE USES	
Airfield				

17. NAMES AND ADDRESSES OF INTERESTED FEDERAL AGENCIES AND OTHER INTERESTED PARTIES  
 County of San Diego  
 San Diego, California

18. REMARKS  
 There is no known defense need for this property within the Department of Defense and the requirements of Title VI Public Law 155, 82nd Congress (65 Stat. 365) have been met.  
 The County of San Diego is presently using the Airfield as a public airport (see Exhibit "A")

19. REPORT AUTHORIZED BY **WRIGHT**  
 NAME Acting Manager, Disposal Branch  
 Lead Management & Disposal Division  
 TITLE Director of Chief of Bureau  
 SIGNATURE *Wright*

## BUILDINGS, STRUCTURES, UTILITIES, AND MISCELLANEOUS FACILITIES

1. HOLDING AGENCY NO.

403

2. **1** OF **1** PAGES  
 OF THIS SCHEDULE

GSA CONTROL NO. (GSA use  
 only) *N-calif-572*

3. ANNUAL RENTAL

SCHEDULE A—SUPPLEMENT TO REPORT OF EXCESS REAL PROPERTY

LINE NO. (a)	HOLDING AGENCY BUILDING NO. (b)	DESCRIPTION (c)	COST (d)	OUTSIDE DIMENSIONS (e)	FLOOR AREA (Sq. Ft.) (f)*	NO. OF FLOORS (g)*	CLEAR HEAD-ROOM (h)*	FLOOR LOAD RANGE (i)*	RESTRICTIONS ON USE OR TRANSFER OF GOVERNMENT INTEREST (j)
1		Small civilian-type frame hanger	---						This property is reported excess for disposal subject to the condition that it be used as an airport and to recapture by the Department of the Navy in any national emergency.
2									
3		One AC Runway 4,000' long	237,500	1-250'x4,000'					
4									
5									
6									
7									
8									
9									
10									
11									
12									
13									
14									
15									
16									
17									
18									
19									
20									
21									
22									
23									
24									
25									
26									
27									
28									
29		1. Includes cost of hangar							
30									
31									
32									
TOTAL			237,500						

\*Prefix figures with symbols to denote type of space, as follows: (a) for office; (b) for storage; (c) for other.

**LAND**

**SCHEDULE B—SUPPLEMENT TO REPORT OF EXCESS REAL PROPERTY**

1. HOLDING AGENCY NO. <b>403</b>	2. PAGE <b>1</b> OF <b>1</b> PAGES OF THIS SCHEDULE
3. GOVERNMENT INTEREST <input type="checkbox"/> LEASE <input type="checkbox"/> PERMIT <input checked="" type="checkbox"/> FEE	<input type="checkbox"/> LICENSE <input type="checkbox"/> EASEMENT <input type="checkbox"/> INFORMAL AGREEMENT N Calif 572

LINE NO. (a)	TRACT NO. (b)	NAME OF FORMER OWNER OR LESSOR AND ADDRESS (c)	TRACT ACQUIRED (Acres or <del>36000</del> ) (d)	EXCESS REAL PROPERTY			TYPE OF ACQUISITION (h)	RESTRICTIONS ON USE OR TRANSFER OF GOVERNMENT INTEREST (i)
				ACRES <del>36000</del> (e)	COST (f)	ANNUAL RENTAL (g)		
1	4	George Sawday and Emily Sawday, joint tenants	24.24	24.24	1,315.00	---	Condemnation - No. 520-SD Civil the United States of America vs 440.14 acres of land, more or less, in the County of San Diego, State of California; Palmer Conner, et al. In the District Court of the United States in and for the Southern District of California Southern Division.	
2								
3								
4								
5								
6								
7								
8								
9								
10	1-3	John S. Hawley III	146.60	146.60	11,000.00	---	Same An easement for road purposes over that portion of described in Road Survey No. 152 and easement for road and incidental purposes over that portion of land lying in Road Survey No. 721.	
11								
12								
13								
14								
15								
16	2	Robert Alling Hawley	155.70	155.70	10,000.00	---	Same Easement for road purposes, and incidental purposes over that portion of said land lying in Road Survey No. 152  This property is reported excess subject to its continued use as an airport and subject to recapture of use by the Department of the Navy in the event of national emergency.	
17								
18								
19								
20								
21								
22								
23								
24								
25								
26								
27								
28								
29								
30								
31								
32								
TOTAL			326.54	326.54	22,315.00			

## APPENDIX E-5

**U.S. Navy**

**Permit: *Revocable Permit, U.S. Navy with County of San Diego, CA, dated 27 February 1952.***  
**Record Group 121, Entry 9NSS-121-85-0008,  
Box 19, Folder H-Calif-572. National Archives  
and Records Administration-Pacific Sierra Region,  
San Bruno, CA.**



COUNTY OF SAN DIEGO  
CONTRACT  
NUMBER 275-465-E  
(Reference above number  
in each communication  
regarding this contract)

All correspondence in  
connection with this contract  
should include reference  
to No. NOy(R) 49417

REVOCABLE PERMIT

WHEREAS, THE UNITED STATES OF AMERICA, hereinafter called  
the GOVERNMENT, developed and operated an airfield for the  
activities of the U. S. Naval Air Landing Strip, Ramona, Cali-  
fornia, upon those certain lands situated in the County of  
San Diego, State of California, hereinafter more particularly  
described; and,

WHEREAS, the County of San Diego, a political subdivision  
of the State of California, hereinafter called the COUNTY,  
went into possession of said land and facilities under the  
terms of a lease from the GOVERNMENT dated February 26, 1947  
and designated as Lease No. NOy(R)-43693; and,

WHEREAS, the said lease expired on the 20th day of  
February, 1952; and,

WHEREAS, it is in the public interest and necessary for  
the public defense that said airfield and facilities be main-  
tained in a stand-by status for possible use in connection  
with Naval aviation activities; and,

WHEREAS, the County is willing to use, maintain and  
keep said airfield and facilities thereon available for such  
use,

NOW, THEREFORE, in consideration of the premises and of  
the covenants and agreements herein contained, the GOVERNMENT  
represented by the Chief of the Bureau of Yards and Docks,  
acting under the direction of the Secretary of the Navy,  
hereby grants to the COUNTY the right to use and occupy as a  
public airport, and for such other purposes as may from time  
to time be approved by the GOVERNMENT that said tract of land,  
together with the improvements thereon and appurtenances  
thereto belonging, hereinafter called the PREMISES, described  
as follows:

REAL ESTATE FILE  
NO. WS-1 D-6

**DUPLICATE ORIGINAL**

REAL  
ESTATE  
FILES

All of those lands lying and being situate in the County of San Diego, State of California, more particularly described as follows:

The east half of the southwest quarter of Section 18, Township 13 South, Range 1 East, S.B.M.; the southeast quarter of Section 18, Township 13 South, Range 1 East S.B.M.; the southwest quarter of the southwest quarter and the west 30 acres of the southeast quarter of the southwest quarter of Section 17, Township 13 South, Range 1 East, S.B.M.; the north 400 feet of the north half of the northwest quarter of Section 20, Township 13 South, Range 1 East, S.B.M., San Diego County, California, containing ~~304.69~~ acres of land, more or less,

This permit is granted upon and subject to the following conditions:

1. This permit shall be effective as of the 27th day of February 1952 and shall continue thereafter subject to revocation at any time at the option and discretion of the GOVERNMENT.

2. The County shall maintain and keep the PREMISES in good serviceable condition and repair, including the runways, landing mats, taxi strips and parking aprons located thereon, so as to adequately and properly protect the GOVERNMENT and its property from loss or damage. All cost and expense incurred and paid by the County in maintaining the said premises shall be borne by the County and no part or portion thereof shall be reimbursed to the County by the GOVERNMENT. The County shall maintain and keep the premises in a clean, safe and healthful condition according to applicable Federal and State Laws and municipal ordinances, and shall comply with all lawful directives by proper public officials in respect thereto while this permit is in effect. Upon the termination of this permit, the County shall deliver up and surrender the premises to the GOVERNMENT in ad good order, condition and repair as said premises were on February 26, 1947, the beginning of the term of the Lease NOy(R)-43693, damage by the elements, acts of God, ordinary wear and tear and deterioration beyond the County's

## APPENDIX E-6

**U.S. Navy, Eleventh Naval District  
Letter: *Lease Noy (R)-34982 with William J. Owen covering approximately 77.5 acres in San Diego County, CA - Release of, dated 22 March 1945. Record Group 71, Entry 1037 Lease Files, 1941-47, Box 4, Folder L5-7-50-3 Noy (R) 34982. National Archives and Records Administration, Archives II, College Park, MD.***

ND11/N1-13  
L5-7-EB-3  
F-5-5/FJL/mak

March 22, 1945

To: The Commandant, Eleventh Naval District.  
Subj: Lease NOy(R)-34982 with William J. Owen covering approximately 77.5 acres in San Diego County, California - Release of.  
Refs: (a) Urttr to Sublocks No. NAC11/F41-10 Serial P-18001 dated 1 March 1945.

1. Reference (a) advised that space covered under Lease NOy(R)-34982 would be vacated on March 5, 1945, and also that the Lessor had been so advised.

2. The enclosed draft of Release has been prepared and is forwarded with request that it be presented to the Lessor for execution in duplicate and returned to this Bureau for distribution pursuant to existing regulations.

By direction of the Chief, Sublocks:

*FJL*  
*3-20-45*

JOHN J. COURTNEY

Encl: (HW)

1. Draft of release in duplicate.

*62627*

*Return to Pearl Harbor*

ROUTE TO  
LT. COMDR. E. F. McCAHILL  
F-5B

RECEIVED *3-22-45*  
RECORDED *3-23-45*

*(Signature)*

## APPENDIX E-7

**Interdepartmental Air Traffic Control Board  
Minutes: *Minutes to Meeting No. 522*, dated 6  
September 1944. Record Group 71, Entry 1013  
Minutes of the IATCB 1943-46, Box 1, Folder  
IATCB 1944. National Archives and Records  
Administration, Archives II, College Park, MD.**

DECLASSIFIED  
by 1 DATA Date 11/4/97

~~RESTRICTED~~

INTERDEPARTMENTAL  
AIR TRAFFIC CONTROL BOARD  
ROOM 1021, ARMY AIR FORCES ANNEX NO. 1  
GRAVELLY POINT, WASHINGTON 25, D. C.

Meeting No. 522

6 September 1944

Place: IATCB Room, Army Air Forces Annex No. 1

Time: 1:00 P.M. to 5:00 P.M.

Members Present:

- A. S. Koch, CAA, Department of Commerce, Presiding
- J. S. Marriott, Colonel, Air Corps, War Department
- L. E. Nivling, Commander, USNR, Navy Department
- David E. Postle, Civil Aeronautics Board

Secretary: J. B. Hartranft, Jr., Major, Air Corps

SUBJECTS:

Page No.

1. AIDS TO AIR NAVIGATION:

- A. RICHMOND HILL, GEORGIA - INSTALLATION OF FAN MARKER - CASE #2647..... 2
- B. CLOVIS, NEW MEXICO - APPROVAL OF RADIO RANGE FOR ARMY AIR FIELD -  
CASE #2649..... 2

2. AIRPORTS:

- A. DESIGNATED LANDING AREAS- CASE #2641..... 3
  - 1. ORANGE, MASSACHUSETTS - ORANGE AIRPORT
  - 2. WORCESTER, MASSACHUSETTS - LEICESTER AIRPORT
  - 3. BATAVIA, NEW YORK - BATAVIA AIRPORT
  - 4. HAMMONDSPORT, NEW YORK - MERCURY AIRPORT
  - 5. SALAMANCA, NEW YORK - SALAMANCA AIRPORT
  - 6. SOUTH CAIRO, NEW YORK - CATSKILL AIRPORT
  - 7. CARLISLE, PENNSYLVANIA - CARLISLE AIRPORT
  - 8. DUNCANNON, PENNSYLVANIA - HACKENBERGER AIRPORT
  - 9. ELIZABETHVILLE, PENNSYLVANIA - ROMBERGER AIRPORT
  - 10. ELYSBURG, PENNSYLVANIA - ELYSBURG AIRPORT
  - 11. HARRISBURG, PENNSYLVANIA - HARRISBURG SEAPLANE ANCHORAGE
  - 12. KANE, PENNSYLVANIA - KANE AIRPORT
  - 13. WELLSBORO, PENNSYLVANIA - WELLSBORO AIRPORT
  - 14. CLINTON, MARYLAND - HYDE FIELD
  - 15. SILVERDALE, PENNSYLVANIA - PHILADELPHIA GLIDER PORT
- B. RAMONA, CALIFORNIA } - OUTLYING FIELDS FOR NAVAL AIR CENTER,
- C. SWEETWATER DAM, CALIFORNIA } SAN DIEGO, CALIFORNIA - CASE #2651..... 5

3. DANGER AREAS:

- A. BOUSE, ARIZONA - RECISION OF APPROVAL OF ARTILLERY WEAPON FIRING AREA  
AND SEARCHLIGHT TRACKING AREA - CASE #2650..... 6
- B. RAMONA, CALIFORNIA - RECISION OF APPROVAL OF DIVE BOMBING TARGET SITE  
CASE #2652..... 7

\* \* \* \* \*

SOURCE: NARA COLLEGE PARK MD

RG: 71

SERIES: ENTRY: 1013 MINUTES OF

BOX: 1

FOLDER: IATCB 1944

~~RESTRICTED~~

due South and  
direction to  
said Longitude  
point of origi

Meeting No. 522

6 September 1944

3-B. RAMONA, CALIFORNIA - RESCISION OF APPROVAL OF DIVE BOMBING TARGET SITE

Discussion:

The Secretary of the Board presented a request from Bureau of Aeronautics, Maintenance Division, Shore Establishments Group, received through Navy Department Member, for rescision of approval in Meeting No. 387 of Dive Bombing Target Site in vicinity of RAMONA, CALIFORNIA, for Naval Auxiliary Air Station, Camp Kearney, California.

Findings:

This target located at Latitude 33° 02', Longitude 116° 55' 30", has been abandoned and it is proposed to construct a landing strip at this location.

RECOMMENDATION:

That approval of Dive Bombing Target Site, Latitude 33° 02', Longitude 116° 55' 30", RAMONA, CALIFORNIA, for Naval Auxiliary Air Station, Camp Kearney, California, be rescinded and the Danger Area removed from aeronautical charts, notices to airmen, and publications of aids to air navigation.

(San Diego)

\* \* \* \* \*

*Joseph B. Hartranft*  
J. B. HARTRANFT, JR.  
Major, Air Corps  
Secretary

The above recommendations are within the policies established by the War Aviation Committee and are approved.

*A. S. Koch*  
A. S. KOCH  
CAA, Department of Commerce Member

*J. S. Marriott*  
J. S. MARRIOTT  
Colonel, Air Corps  
War Department Member

*L. E. Nivling*  
L. E. NIVLING  
Commander, USN  
Navy Department Member

*David E. Postle*  
DAVID E. POSTLE  
Civil Aeronautics Board Member

REPRODUCED AT THE NATIONAL ARCHIVES  
By ST/NAVA DESIG/14/17

## APPENDIX E-8

**U.S. Navy, Eleventh Naval District  
Letter: *Lease Noy (R) - 34982 with William J. Owen, Ramona, CA - Site for Practice Bombing Target - Cancellation of*, dated 26 December 1944. Record Group 71, Entry 1037 Lease Files, 1941-47, Box 4, Folder L5-7-50-3 Noy (R) 34982. National Archives and Records Administration, Archives II, College Park, MD.**



ADDRESS REPLY TO  
COMMANDANT  
11TH NAVAL DISTRICT  
AND REFER TO:

NAC11/F41-10  
(Serial No. P-18001)

COMMANDANT'S OFFICE  
ELEVENTH NAVAL DISTRICT  
SAN DIEGO, 30, CALIFORNIA



1- MAR 1945

To: BuDocks  
Attn: F-5-5

Subj: Lease NOy(R)-34982 with William J. Owen, P.O. Box  
18, Ramona, California - Site for Practice Bombing  
Target - Cancellation of.

Ref: (a) Urltr ND11/N1-13 L5-7-SD-3 F-5-5/FJL/oph, dtd.  
5 Feb. 1945.

1. The land covered by the subject lease has been cleared by the Target Repair Crew of the Naval Air Station, San Diego, California. The owner has been approached and states that he is satisfied and no other work will be required by the Navy Department on the subject premises. ComEleven is prepared to submit Release of Lease Agreement to the Lessor if this is satisfactory with the Bureau. Advise.

2. This information was requested by ref. (a).

By direction of the Commandant:

*A. K. Fogg*  
A. K. FOGG,  
Public Works Officer  
11th Naval District.

797464

No. <u>L5-7-SD-3</u>
FILED

## APPENDIX E-9

**U.S. Navy, Eleventh Naval District  
Letter: *Bombing Targets in Southern California  
Sector, Western Sea Frontier*, dated 24 August  
1944. Record Group 181, Entry 11th Naval  
District Correspondence, Box 38, Folder NAB 11.  
National Archives and Records Administration-  
Pacific Southwest Region, Laguna Niguel, CA.**

ACC/F41-10  
A2-11(wt)  
Serial: 98

AIRCRAFT  
SOUTHERN CALIFORNIA SECTOR  
WESTERN SEA FRONTIER

24 August, 1944

Eleventh Naval District  
San Diego, California

AIRCRAFT SOUTHERN CALIFORNIA SECTOR, WESTERN SEA FRONTIER  
CIRCULAR LETTER NUMBER 20-44

From: Commander Aircraft, Southern California Sector, Western  
Sea Frontier.  
To : AIRCRAFT, Southern California Sector, Western Sea Frontier.  
Subj: Bombing Targets in Southern California Sector, Western Sea  
Frontier.

1. Enclosure (1) contains the position and description of all bombing targets in the Southern California Sector of the Western Sea Frontier, together with a statement of the type of bombing runs permitted and the type of ordnance permitted.
2. Certain bombing targets listed in enclosure (1) are not in commission as yet. A notam will be issued when such targets are commissioned.
3. The targets listed in enclosure (1) shall be used solely by the units to whom they are assigned by Joint Operations Center, San Diego (Naval Air Control Center). The unit to whom the target is assigned, however, may permit another unit to use such target. When such permission is given, Air Control Center shall be advised by teletype.
4. Where areas, targets, and landing fields are assigned by Joint Operations Center, San Diego, to more than one unit, the senior naval aviator of the units assigned the same areas, targets and landing fields shall coordinate the schedules except in cases where the assignments specify the hours a unit is to use such area, target or landing field.
5. It is frequently necessary to conduct air and surface firing and other surface operations in the same areas. All units must exercise caution. Aerial gunnery above an overcast is not permitted.
6. No dummy runs are to be made on any target declared closed.
7. Water filled bombs over 100 pounds may not be used on water bombing targets or land skip bombing targets.
8. Units desiring to drop live bombs must notify Joint Operations Center, San Diego at least 24 hours in advance.
9. The following targets can be illuminated: Otay on request to Naval Auxiliary Air Station, Brown Field, all Salton Sea targets on request to

SOURCE: NARA LAGUNA NEGEL

RG: 181

SERIES: 11th NAVAL DIST. COM

BOX: 38

FOLDER: NAB 11

ACC/F41-10

A2-11(wt)

Serial: 98

24 August, 1944

Subj: Bombing Targets in Southern California Sector, Western  
Sea Frontier.

Naval Auxiliary Air Station Salton Sea and Holtville one (1) and two (2)  
on request to Naval Auxiliary Air Station Holtville.

10. Squadrons must observe provisions of Fleet Air Detachment Circular  
Letters 25-43 and 22-44.

By direction of ComAirSoCalSec, WSF.

Enc-(1) Position & Description  
of Bombing Targets.

*Max L. Black*  
MAX L. BLACK  
Deputy Commander

Reproduced from the holdings of the National Arch  
Pacific Southwest Region

NAME	POSITION	DESCRIPTION	TYPE OF BOMBING RUN	TYPE OF ORDNANCE
WBT A	32-32-10 117-12-30	Radar-rigged Pyramid	Bombing runs must be conducted at an alt. not to exceed 700 ft. Actual releases at 200 feet.	Practice Bombs
WBT B	33-04-40 117-19-50	Radar Rigged Pyramid	Low level (see WBT A)	Practice bombs
Borego Hotel BT	33-05-30	Concentric	High Altitude and	Practice bombs
DCO.	116-06-06	Circles	Dive Bombing	and strafe
Borego Wash BT	33-11-45 115-09-15	Concentric circles with airplane silhouette adjacent to target for strafing only	High Altitude and Dive Bombing	Practice bombs and strafe
WBT C	33-26-00 117-41-30	Radar-rigged Pyramid	Low-level (see WBT A)	Practice bombs
Catalina BT	33-18-50 118-26-40	Concentric circles	Dive Bombing	Practice bombs
Clarks Dry Lake BT	33-20-24 116-16-48	Concentric circles simulated submarine	High Altitude and Dive Bombing	Practice bombs and strafe
Cortes Bank WBT	32-28-45 119-12-50	Radar-rigged	Low-level	Practice bombs
Coyote Wells BT	32-56-00 115-52-30	Circle - simulated Destroyer deck	High Altitude and Dive bombing	Practice bombs and strafe
WBT D	33-37-27 118-04-00	Radar-rigged Pyramid	Low-level (See WBT A)	Practice bombs
WBT E	34-01-00 118-36-00	Radar-rigged Pyramid	Low-level (see WBT A)	Practice bombs
East Borego BT	33-04-00 115-57-25	Circle	High Altitude and Dive Bombing	Practice bombs and strafe
Holtville BT 1	32-56-45 115-12-30	Concentric circles	Dive Bombing	Practice bombs and strafe
Holtville BT 2	33-01-30 115-18-30	Concentric circles	Low-level	Rocket
Holtville BT 3	33-09-00 115-22-05	Concentric circles	Dive Bombing	Practice bombs

Enclosure 1-10 ComAirSec  
No. 20-44

NAME	POSITION	DESCRIPTION	TYPE OF BOMBING RUN	TYPE OF ORDNANCE
Holtville I R	32-54-45 115-15-30	Concentric circles	Low-level	Rocket
Lake Hodges BT	33-00-55 117-08-45	Concentric circles simulated destroyer deck	Dive Bombing	Practice Bombs
Kane Springs SBT	33-04-10 115-47-15	Radar-rigged Fence	Low-level	Miniature Bombs and strafe
Miramar BT	32-54-00 117-07-00	Concentric circles	Runs must be made so that pull-outs will be in northerly direction and when operating below 5000 feet will remain north of an eastwest line drawn through the field to avoid conflict with traffic on Camp Kearney Field.	Practice Bombs
Ocotillo Mobile and Stationary BT	33-08-08 116-07-09	Concentric circles	Dive bombing	Practice Bombs
Otay BT	32-35-00 116-55-45	Concentric circles simulated destroyer deck	Dive bombing	Practice bombs
Ramona BT	33-02-00 116-54-48	Concentric circles simulated destroyer deck	Dive bombing	Practice bombs
ALTON, SEA SBT	33-15-15 115-49-15	Screened raft-radar	Low-level	Practice bombs (Target closed for repairs 0001 to 2000 each Monday.)
FBT 11	33-18-15 115-54-15	Pyramid	High Altitude and Dive Bombing	Practice bombs
FBT 12	33-24-30 115-59-15	Pyramid	High Altitude and Dive Bombing	Practice bombs
FBT 13 <i>Riverside</i>	33-28-15 116-02-45	Pyramid	High Altitude and Dive Bombing	Practice bombs
FBT 14	33-29-30 115-55-00	Pyramid	High Altitude and Dive Bombing	Practice Bombs

NAME	POSITION	DESCRIPTION	TYPE OF BOMBING RUN	TYPE OF ORDNANCE
FBT 15 ✓	33-27-00 115-52-30	Pyramid	High Altitude and Dive Bombing	Practice Bombs
FBT 16 ✓	33-23-30 115-48-15	Pyramid	High Altitude and Dive Bombing	Practice Bombs
FBT 17 ✓	33-20-15 115-45-00	Pyramid	High Altitude and Dive Bombing	Practice Bombs
FBT 18 ✓	33-17-30 115-40-30	Pyramid Radar-rigged	Low-level	Practice Bombs
FBT 19 ✓	33-15-15 115-37-00	Radar-rigged Pyramid	Low-level	Practice Bombs
<u>SAN CLEMENTE</u>				
LBT 21	32-53-23 118-29-13	Concentric circles and rectangle	Dive Bombing	Practice Bombs
WBT 5	32-54-55 118-27-42	Pyramid	High Altitude and Dive Bombing	Practice Bombs
Castle Rock BT	33-02-10 118-36-45	Rock	High Altitude and Dive Bombing	Practice Bombs and Strafe
WBT 6	32-49-57 118-21-17	Pyramid	High Altitude and Dive Bombing	Practice Bombs
Trabuco BT	33-37-45 117-36-00	X east target a destroyer masthead Y center target a circle Z west target a circle	Dive and Slide Bombing	Five pound practice bombs only
WBT 1	32-27-00 117-10-30	Radar-rigged Pyramid	Low-level	Practice Bombs
WBT 2	32-22-45 117-09-18	Radar-rigged	Low-level	Practice Bombs
WBT 3	32-17-34 117-09-30	Pyramid	Low-level	Practice Bombs
Winona BT 1	33-13-30 115-58-15	Concentric Circles	Low-level	Rockets
Winona BT 2	33-13-30 115-00-30	Concentric Circles	Low-level	Rockets
Wilson Rock BT	34-06-30 120-24-12	Rock	High Altitude and Dive Bombing	Practice and live Bombs and Strafe

## **APPENDIX E-10**

**U.S. Navy, Eleventh Naval District  
Letter: *Lease of Practice Bombing Target Site  
near Ramona, CA*, dated 4 March 1944. Record  
Group 71, Entry 1037 Lease Files, 1941-47, Box  
4, Folder L5-7-50-3 Noy (R) 34982. National  
Archives and Records Administration, Archives II,  
College Park, MD.**



IN REPLY KINDLY ADDRESS  
"COMMANDANT"  
NOT THE SIGNER BY NAME

NAC11/F41-10  
(Serial No. F-13606)

COMMANDANT'S OFFICE  
ELEVENTH NAVAL DISTRICT  
SAN DIEGO, CALIFORNIA

ND11/N1-13

4 MAR 1944

To: Budocks.  
Attn: F-5-5.

Subj: Lease of Practice Bombing Target Site near  
Ramona, California for Naval Air Center,  
San Diego, California.

Ref: (a) Budocks Spdltr to Com11, file ND11/N1-13,  
F-5-5/HET/eh, dated 25 February 1944.

1. In accordance with instructions contained in Ref. (a), leases have been prepared covering subject site, executed by Lessors and are forwarded herewith as Encls. 1 and 2 for approval and execution on behalf of the United States.

2. The owners of the subject property desire that that portion of Paragraph 8 requiring the Government to restore the premises not be deleted from the lease. Discussions with the owners indicated that no reasonable settlement could be made for the liquidated damages in lieu of Government restoration. The Public Works Officer estimates the restoration cost will not exceed \$100.00, inasmuch as the property will be easy to restore and is easily accessible to the District Headquarters.

By direction of the Commandant

*H. D. Hilton*

519146

H. D. HILTON  
Executive Assistant  
Public Works Department

Encls.

1. (HW) Executed Lease between Robert A. Hawley and the United States of America, dated 15 October 1943, in trip.
2. (HW) Executed Lease between William J. Owen and the United States of America, dated 15 October 1943, in trip.

## APPENDIX E-11

**U.S. Navy, Eleventh Naval District**  
**Letter: *Lease of Practice Bombing Target Site***  
***near Ramona, CA, dated 17 January 1944.***  
**Record Group 71, Entry 1037 Lease Files, 1941-**  
**47, Box 4, Folder L5-7-50-3 Noy (R) 34982.**  
**National Archives and Records Administration,**  
**Archives II, College Park, MD.**

NAVEXOS-312

# NAVAL SPEEDLETTER

File or  
Serial No.

F41-10  
566  
(Serial No. P-13503)

Date

17 January 1944

**SPEEDLETTER**

**TO:**

BuAero

**SO1 30 61**

Use in lieu of despatches, telegrams, teletypes, and mailgrams when appropriate.

Do not handle through Communication Offices.

Despatch phraseology may be used.

Use size No. 9 window envelopes when appropriate and available.

If used for classified matter handle as prescribed in U. S. Navy Regs., Arts. 75½ and 76.

Upon receipt EXPEDITE HANDLING and DELIVERY as much as possible.

Lease of Practice Bombing Target Site near Ramona, California for NAC San Diego, California. Location of subject site approved by I.A.T.C.B. meeting No. 387 16 December 1943. Requisition 231-44 Aero being prepared to cover 155 acres of vacant land in two ownerships at an estimated yearly rental of \$630.00. Rental considered fair and compares with rental for similar land in the immediate vicinity. Owners indicated willingness to lease pending approval but desire that paragraph 8 of standard Government lease obligating the Government to restore premises not be deleted. Estimated cost of restoration approximately \$100.00. Request approval of this acquisition and authority to forward leases executed by owners. Despatch reply requested.

In direction of the Commandant:

Copies To

BuDocks  
Comdt, NAC, San Diego

492453

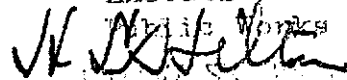
1944 FEB 2 10 34

Signature and Title

H. L. HILTON

Executive Assistant

Public Works Department



SENDER'S MAILING ADDRESS. (Including symbol or identity of originating office.)

Commandant,  
Eleventh Naval District,  
San Diego 30, California.

ATTENTION ADDRESSEE: Address reply exactly as indicated on right.

NAVY DEPT

20 JAN 1944

SO1 30 61

## **APPENDIX E-12**

**U.S. Navy, Naval Air Station, San Diego, CA  
Letter: *Requisition No. 231-44 Aero*, dated 13  
January 1944. Record Group 71, Entry 1037  
Lease Files, 1941-47, Box 4, Folder L5-7-50-3  
Noy (R) 34982. National Archives and Records  
Administration, Archives II, College Park, MD.**

44 JAN 15 PM 2 35

NAVAL SUPPLY DEPOT  
SAN DIEGO, CALIF.

(246) HAS, San Diego, California  
Requisition No. 231-44 Aero Bureau Aeronautics Date 13 January 1944 Contract No. \_\_\_\_\_

Schedule No. \_\_\_\_\_ Material for Stores account APA Title 13-X-6L; or Final Title \_\_\_\_\_  
Ship or account \_\_\_\_\_

Appropriation 1741502.3 Aviation Navy 1943  
Purpose Rental of land for Naval Air Center (Ramona Bombing Target)

Ultimately chargeable:  
Appropriation \_\_\_\_\_  
Title \_\_\_\_\_

Job Order No. \_\_\_\_\_  
(or) Ship's Req. No. \_\_\_\_\_

Estimated Cost: \$446.26

Date \_\_\_\_\_

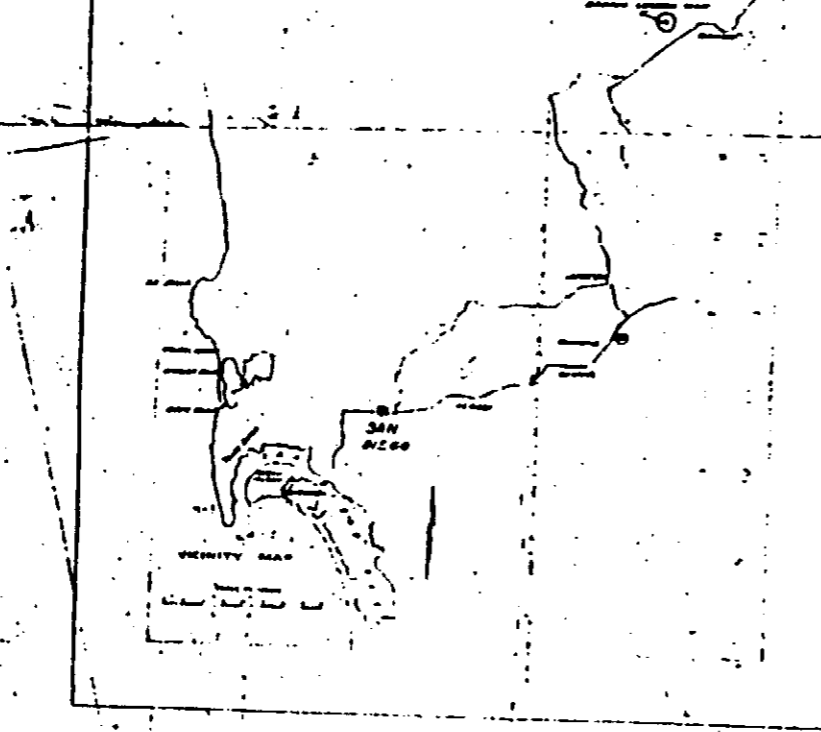
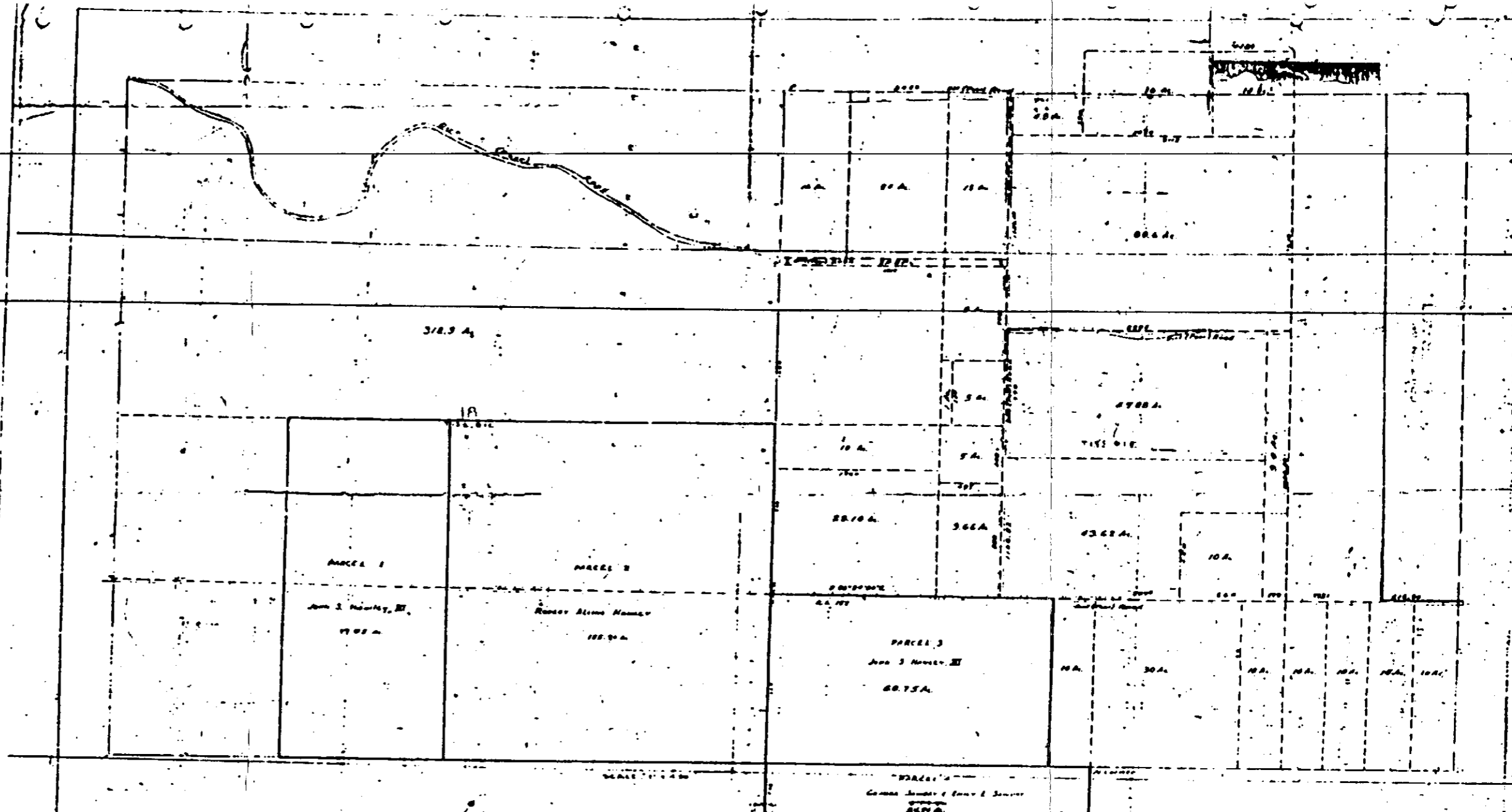
ITEM No.	ARTICLES OR SERVICES	QUANTITY	UNIT	UNIT PRICE	AMOUNT	
					Dollars	Cents
	FOR RENTAL OF LAND FOR PERIOD FROM OCTOBER 15, 1943 TO JUNE 30, 1944.					
	Rental of land for Naval Air Center, San Diego, California, to be used for a bombing target site (Ramona Target):					
1.	77.5 acres of vacant land - the North half (N $\frac{1}{2}$ ) of the Northeast quarter (NE $\frac{1}{4}$ ) of Section nineteen, Township thirteen South, Range one East, SBEM San Diego County, California.  Lessor: William J. Cron P.O. Box 18 Ramona, California	8 $\frac{1}{2}$	No.	PER AC. 32.0	219	56
2.	76.2 acres of vacant land - the South half (S $\frac{1}{2}$ ) of the Southeast quarter (SE $\frac{1}{4}$ ) of Section eighteen, Township thirteen South, Range one East, SBEM San Diego County, California.  Lessor: Robert A. Hawley 6631 Newcomb Court San Diego 10, California	6 $\frac{1}{2}$	No.	PER AC. 32.0	220	70
	TOTAL				\$446	26
	Facilities included in rental - None					
	Persons to occupy space continuously - None					
	This lease shall become effective October 15, 1943, and shall expire on June 30, 1944. It shall be renewable yearly on June 30 and until six months after termination of present war, unless either party shall have given notice in writing not less than 90 days prior thereto that renewal is not desired. Such renewal or renewals shall be upon the same terms and conditions as the original lease.					
	Rental bills in duplicate to be forwarded to the Supply Officer, Naval Air Station, San Diego, California.					

Payment will be made by the Disbursing Officer, 13th Naval District, San Diego, California

Enclosures: (1) Copy of Information for Requisitions for lease with William J. Cron.  
(2) Copy of Information for Requisitions for lease with Robert A. Hawley.

## **APPENDIX E-13**

**U.S. Navy, Eleventh Naval District  
*Land Acquisition Map Ramona Landing Strip,*  
dated 23 August 1944. DERP-INPR Backup Files,  
Folder J09CA106900 Ramona Bombing Site, CA.  
Engineering Division, U.S. Army Corps of  
Engineers, Los Angeles District, CA.**



**OWNER & DESCRIPTION OF PROPERTY**

**Parcel 1:** John S. Hickey, III  
 The East 1/2 of the Southwest Quarter of Section 18, Twp 37 S, Rng 12 E, S 2 R.

**Parcel 2:** Robert Alton Hickey  
 The East 1/2 of the Southwest Quarter of the South 1/2 of the Southwest Quarter of Section 18, Twp 37 S, Rng 12 E, S 2 R.

**Parcel 3:** John S. Hickey, III  
 The Southwest 1/4 of the Southwest 1/4 of the West 1/2 of the Southwest 1/4 of the South 1/2 of the Southwest Quarter of Section 18, Twp 37 S, Rng 12 E, S 2 R.

**Parcel 4:** Robert Alton Hickey & John S. Hickey  
 The South 1/2 of the West 1/2 of the Southwest 1/4 of the Southwest Quarter of Section 18, Twp 37 S, Rng 12 E, S 2 R.

**Exhibit C**

ELEVENTH NAVAL DISTRICT, SAN DIEGO, CALIF.

LAND ACQUISITION MAP

RAMONA LANDING STRIP

REPORT OF THE DISTRICT ENGINEER

NOVEMBER 1944

ND11/N1-13(19)

**APPENDIX F**  
**REAL ESTATE DOCUMENTS**  
**NOT USED**  
**(see Appendix E)**



**APPENDIX G**  
**NEWSPAPER / JOURNALS**  
**NOT USED**

**APPENDIX H**  
**INTERVIEWS**

## INTERVIEWS

The following individuals provided pertinent information through interviews concerning Ramona Bombing Target and Emergency Landing Field. A summary of these cited conversations is included in Section 4.3. This appendix contains documented conversations in the form of Telephone Conversation Records for the following:

<u>Individual Contacted</u>	<u>Date Interviewed</u>	<u>Position/ Organization</u>	<u>Page Number</u>
Rick Jenkins	30 October 1997	Ramona Airport Manager	D-3

The following organization and individuals comprised the archive search team:

### U.S. Army Corps of Engineers

St. Louis District (DSN: 555)

Engineering Division - Ordnance and Technical Services Branch (CEMVS-ED-P)

1222 Spruce Street

St. Louis, MO 63103-2833

<u>Individual</u>	<u>Telephone Number</u>	<u>CEMVS Position</u>
Kenneth J. Brimm	314-331-8797	ED-P, Historian
Randal Curtis	314-331-8786	ED-P, ASR Project Manager
Michael Dace	314-331-8036	ED-P, Chief of Ordnance and Technical Service Branch
Shirley Hamilton	314-331-8848	ED-P, Project Assistant
Sharon Hornback	314-331-8388	ED-HG, CADD Specialist
Jennifer James	314-331-8897	ED-P, Quality Assurance Specialist Ammunition Surveillance (QASAS)
William K. James	314-331-8789	ED-P, Safety Specialist
Shelia Thomas	314-331-8793	ED-P, Historian
Rick Webster	314-331-8639	ED-HG, Aerial Photography Interpretation

The archive search team also contacted the following individuals in preparation of this ASR. Conversation with these people yielded information of three general sorts:

- background data contained in written documents
- negative information (i.e. no pertinent knowledge of the site)
- coordination of efforts for various interested parties

While valuable, conversations with these individuals did not yield information cited in this report and hence Telephone Conversation Records have not been included. (See additional Points of Contact under section 4.2 Records Review):

<u>Individual Contacted</u>	<u>Telephone Number</u>	<u>Position/ Organization</u>
Rick Jenkins	760-788-6174	Ramona Airport, airport manager
FAX	760-788-1729	
Silvia Gustafson	619-596-3909	Acting director San Diego County Airports
Theresa Morrison	714-640-0791	President Cagney Enterprises (Land Trust)

**U.S. Army Engineering and Support Center, Huntsville (CEHNC)**  
**Mandatory Center of Expertise and Design Center of Ordnance and Explosives**  
Danny Mardis                      205-895-1797                      ASR Project Manager

**TELEPHONE OR VERBAL CONVERSATION RECORD**      DATE 30 October 1997  
For use of this form, see AR340-15; the proponent agency is the Adjutant General's Office.

<b>SUBJECT OF CONVERSATION</b>  Ramona Bombing Target and Emergency Landing Field		
<b>PERSON CALLING</b>  Kenneth J. Brimm	<b>ADDRESS</b>  CEMVS-ED-P	<b>PHONE NUMBER AND EXTENSION</b>  314-331-8797
<b>PERSON CALLED</b>  Rick Jenkins	<b>OFFICE</b>  Ramona Airport Manager Ramona, CA	<b>PHONE NUMBER AND EXTENSION</b>  760-788-6174

**SUMMARY OF CONVERSATION:**

Mr. Jenkins is aware that the USACE LA District contacted Ms. Mathews at Executive Aviation, a tenant at the airport, for historical information. Mr. Jenkins says that the area that is still likely to contain ordnance or pieces of practice bombs lies of the south end of the runways in a shrimp habitat. He also says that the team can get a copy of the airport's master plan and an environmental EIR report done on the property.

Follow up - 19 March 1998 by Randal Curtis (314-331-8786)

I made arrangements for the site inspection on 30 March. Mr. Jenkins assisted me with contacting the land owner to the south, Cagney Enterprises.

**APPENDIX I**  
**PRESENT SITE PHOTOGRAPHS**

**PRESENT SITE PHOTOGRAPHS**

**TABLE OF CONTENTS**

<b><u>Photo. No.</u></b>	<b><u>Photograph Location</u></b>	<b><u>Page No.</u></b>
1.	Looking north across bomb target to airport.	I-2
2.	<u>Bomb Target Center</u> - 2 inch diameter steel pipe.	I-2
3.	Sheet metal debris from 100 pound practice bomb.	I-3
4.	Sheet metal debris from 100 pound practice bomb.	I-3
5.	Cast iron, 3 pound miniature practice bomb.	I-4
6.	Sheet metal debris from 100 pound practice bomb.	I-4



↑ Photo #1

**Ramona Bombing Target and Emergency Landing Field - 30 March 1998**

Looking north across bomb target to airport. The fence line between Sections 18 and 19 is in the middle of the photo and the limits of noted sheet metal scrape is about 250 feet.

↓ Photo #2

**Ramona Bombing Target and Emergency Landing Field - 30 March 1998**

**Bomb Target Center** - 2 inch diameter steel pipe about 2 feet above ground surrounded by rocks is at coordinates N 33° 02' 10.0", W 116° 54' 54.1".







↑ Photo #3

**Ramona Bombing Target and Emergency Landing Field - 30 March 1998**

Sheet metal debris apparently from 100 pound practice bombs (MK VII or MK XV) along fence line between Sections 18 and 19 at N 33° 02' 12.2", W 116° 54' 53.5".

↓ Photo #4

**Ramona Bombing Target and Emergency Landing Field - 30 March 1998**

Sheet metal debris apparently from 100 pound practice bombs (MK VII or MK XV) along fence line between Sections 18 and 19 at N 33° 02' 12.2", W 116° 54' 53.5".





↑ Photo #5

**Ramona Bombing Target and Emergency Landing Field - 30 March 1998**

Cast iron, 3 pound miniature practice bomb (i.e. AN-MK 23) at N 33° 02' 10.0", W 116° 54' 55.5".

↓ Photo #6

**Ramona Bombing Target and Emergency Landing Field - 30 March 1998**

Sheet metal debris apparently from 100 pound practice bombs (MK VII or MK XV).



**APPENDIX J**  
**HISTORICAL PHOTOGRAPHS**

## HISTORICAL PHOTOGRAPHS

Page No.      Historical Photographs

- J-2      Department of the Navy  
*Photograph 422699: Vertical of OLF Ramona, CAL., dated May 1948, Record Group 80, Entry G General Photographs, Still Pictures Branch National Archives at College Park, MD.*
- J-3      Department of the Navy  
*Detail of Photograph 422699: Vertical of OLF Ramona, CAL., dated May 1948, Record Group 80, Entry G General Photographs, Still Pictures Branch National Archives at College Park, MD.*

U.S. NAVY NO.

422699

NEG

U.S. NO.

DATE

PC-48

422699

MAY 1948

SUBJECT:

CAPTION:

VERTICAL OF OLF  
RAMONA, CAL.



UNCLASSIFIED

LOCATION:  
OLF, RAMONA, CAL.

PHOTOGRAPHER:

TAKEN BY (UNIT):

FVU-7

LOCAL NO.:

FVU-7#4183

CLASSIFICATION:

ARCHIVES SEARCH REPORT - FINDINGS  
Ramona Bombing Target and Emergency Landing Field  
Ramona, CA



**APPENDIX K**  
**HISTORICAL MAPS / DRAWINGS**  
**NOT USED**

**APPENDIX L**

**SITE SAFETY AND HEALTH PLAN / SITE  
INSPECTION REPORT**



**SITE SAFETY AND HEALTH PLAN / SITE INSPECTION REPORT**

- L-1 Site Safety and Health Plan - Ramona Bombing Target and Emergency Landing Field
- L-2 Site Inspection Report - Ramona Bombing Target and Emergency Landing Field

## **APPENDIX L-1**

### **Site Safety and Health Plan - Ramona Bombing Target and Emergency Landing Field**

**SITE SAFETY AND HEALTH PLAN (SSHP)**  
**for**  
**Ramona Bombing Target and Emergency Landing Field**  
**San Diego, CA**  
**SITE # J09CA106901**

The purpose of this site visit is to reconnoiter, document, and photograph areas on Ramona Bombing Target, San Diego, California suspected to be contaminated with unexploded ordnance and/or toxic chemical munitions.

PREPARED BY: William K. James  
OFFICE USACE, CEMVS-ED-P  
ADDRESS 1222 Spruce St. St. Louis, Mo  
PHONE (314) 331-8789  
DATE PREPARED 3-23-98

REVIEWED/APPROVED BY: Randy Fraser  
SSHO, UXO Spec.

NOTE This SSHP is to be used only for non-intrusive site visits and must be approved by safety prior to the start of the field visit. All team members must read, and comply with the SSHP, and attend the safety briefings. The Site Safety and Health Officer (SSHO) shall ensure the Safety Briefing Checklist and the SSHP acceptance form (Appendix C) is filled out prior to the start of the site visit.

**A. SITE DESCRIPTION AND PREVIOUS INVESTIGATIONS**

**1. Site Description**

a. Size 404.74 Acres

b. Present Usage (check all that apply)

- |   |  |  |
|---|--|--|
| <input type="checkbox"/> Military               | <input type="checkbox"/> Recreational          | <input type="checkbox"/> Other (specify) |
| <input checked="" type="checkbox"/> Residential | <input checked="" type="checkbox"/> Commercial | _____                                    |
| <input type="checkbox"/> Natural Area           | <input checked="" type="checkbox"/> Industrial | _____                                    |
| <input type="checkbox"/> Agricultural           | <input type="checkbox"/> Landfill              | _____                                    |
| <input type="checkbox"/> Secured                | <input type="checkbox"/> Active                | <input type="checkbox"/> Unknown         |
| <input checked="" type="checkbox"/> Unsecured   | <input type="checkbox"/> Inactive              |  |

2. Past Uses: The property was used by the Department of the Navy as both a bombing target and landing strip.

3. Surrounding Population (check all that apply)

- |  |   |  |
|--|---|--|
| <input type="checkbox"/> Rural                 | <input checked="" type="checkbox"/> Residential | <input type="checkbox"/> Other (specify) |
| <input type="checkbox"/> Urban                 | <input type="checkbox"/> Industrial             | _____                                    |
| <input checked="" type="checkbox"/> Commercial |   |  |

4. Ordnance/Explosives (OE) Potential: Practice bombs and small arms.

**B. DESCRIPTION OF ON-SITE ACTIVITIES (check all that apply)**

- |  |   |  |
|--|---|--|
| <input checked="" type="checkbox"/> Walk-through | <input checked="" type="checkbox"/> Drive-through | <input type="checkbox"/> Other (specify) |
| <input checked="" type="checkbox"/> On-Path      | <input checked="" type="checkbox"/> On-road       | _____                                    |
| <input checked="" type="checkbox"/> Off-Path     | <input type="checkbox"/> Off-road                 |  |

**C. SITE PERSONNEL AND RESPONSIBILITIES**

**1. Responsibilities**

a. **Project Manager** The Corps of Engineers Project Manager (PM) is overall responsible for the site visit. He will assign a Team Leader, (most situation will be the PM). The PM will ensure that the SSHP is completed. Coordinates and executes the site visit.

b. **Site Safety and Health Officer** Individual designated to conduct safety, enforce the SSHP, conduct safety briefings, and ensure that the team leader can safely fulfill his objectives. The SSHO will maintain the safety gear, and monitor on-site operations. The SSHO is responsible for identifying, marking, and

reporting any unexploded ordnance and explosives.

**2. Team Members**

Name	Position	Address	Phone
<u>Randal Curtis</u>	<u>PM/Team Leader</u>	<u>USACE, St. Louis, MO</u>	<u>314-331-8786</u>
<u>William K. James</u>	<u>QASAS/UXO SAFETY</u>	<u>USACE, St. Louis, MO</u>	<u>314-331-8789</u>
<u>Jennifer J. James</u>	<u>QASAS</u>	<u>USACE, St. Louis, MO</u>	<u>314-331-8897</u>

**D. OVERALL HAZARD EVALUATION (check one)**

High       Moderate       Low       Unknown

This assessment was developed using the Site Investigation Hazard Analysis and Risk Assessment Code Matrix.

**E. GENERAL PRECAUTIONS** Prior to the on-site visit, all team members are required to read this SSHP and sign the form acknowledging that they have read and will comply with it. In addition, the SSHO shall hold a brief tailgate meeting in which site specific topics regarding the days activities will be discussed. If unanticipated hazardous conditions arise, team members are to stop work, leave the immediate area and notify the SSHO. The buddy system will be enforced at all times.

**F. STANDARD OPERATION SAFETY PROCEDURES, ENGINEERING CONTROLS AND WORK PRACTICES**

- 1. Site Rules/Prohibitions** At any sign of unanticipated hazardous conditions, stop tasks, leave the immediate area and notify the SSHO. Smoking, eating and drinking allowed in designated areas only.
- 2. Material Handling Procedures** Do not handle.
- 3. Drum Handling Procedures** Do not handle.
- 4. Confined Space Entry** An area identified as a Permit Required Confined space will not be entered. All confined spaces shall be considered permit required confined spaces until the pre-entry procedures demonstrate otherwise. Confined spaces may be entered without a written permit or attendant provided the space is determined not to be a permit required confined space as specified in 29 CFR 1910.146.
- 5. Electrical Protection** Overhead power lines, downed electrical wires and buried cables pose a danger of shock and electrocution. In addition, buildings may contain exposed wiring that may hold a potential load. Workers should avoid contact with any and all exposed wire and cables

6. **Spill Containment** N/A
7. **Excavation Safety** Do not enter trenches/excavations.
8. **Illumination** Site visits will be conducted during daylight hours only.
9. **Sanitation** Use existing sanitary facilities.
10. **Buddy System** Individuals will maintain constant contact with other personnel at all times. No one will work alone at any time during the site visit.
11. **Engineering Controls** N/A
12. **Insects** Wearing light colored clothing and tucking in the pant legs can reduce contact. In severely infested area it may be necessary to tape all openings. Apply repellents to both clothing and bare skin. Diethyltoluamide (DEET) is an active ingredient in many repellents, which is effective against ticks and other insects. Repellents containing DEET can be applied on exposed areas of skin and clothing. However, repellents containing permethrin should be used on only clothing. For more information on insect bites, refer to Appendix B.
13. **Poisonous Vegetation** Recognition and avoidance is the best protection. Cover all exposed skin. If it is known or suspected that an individual has been exposed, wash the effected area with soapy water.
14. **Inclement Weather** When there are warnings or indications of impending severe weather (heavy rains, strong winds, lightning, tornados, etc.), weather conditions shall be monitored and appropriate precautions taken to protect personnel and property from the effects of the severe weather.
15. **Hot Weather** In hot environments, cool drinking water shall be made available and workers shall be encouraged to frequently drink small amounts, e.g., one cup every 15 - 20 minutes; the water shall be kept reasonably cool. In those situations where heat stress may impact worker safety and health, work regimens shall be established. Environmental monitoring of the Wet Bulb Globe Temperature Index shall be conducted and work loads and work regimens categorized as specified in the American Conference of Governmental Industrial Hygienist (ACGIH) publication "Threshold Limit Values and Biological Exposure Indices". For more information on Heat Stress refer to Appendix A of this SSHP.
16. **Cold Weather** Cold injury (frost bite and hypothermia) and impaired ability to work are dangers at low temperatures and when the wind-chill factor is low. To guard against them; wear appropriate clothing; have warm shelter readily available; carefully schedule work and rest periods, and monitor workers' physical conditions.
17. **Off-Road Driving** Ensure all emergency equipment is available with the vehicle

i.e. tire changing equipment. Drivers shall familiarize themselves with the procedures for engaging four-wheel drive systems before the need for added traction arises. Vehicles will not be driven into an environment that is unknown, such as deep water, or an unstable surface. Vehicles will not be driven into a suspected ordnance impact area.

## **18. Ordnance**

### **a. General Information**

- (1) The cardinal principle to be observed involving explosives, ammunition, severe fire hazards or toxic materials is to limit the exposure to a minimum number of personnel, for the minimum amount of time, to a minimum amount of hazardous material consistent with a safe and efficient operation.
- (2) The age or condition of an ordnance item does not decrease the effectiveness. Ordnance that has been exposed to the elements for extended periods of time become more sensitive to shock, movement, and friction, because the stability agent in the explosives may be degraded.
- (3) When chemical agents may be present, further precautions are necessary. If the munitions item has green markings leave the area immediately, since it may contain a chemical filler.
- (4) Consider ordnance that has been exposed to fire as extremely hazardous. Chemical and physical changes may have occurred to the contents which render it more sensitive than it was in its original state.

### **b. On-Site Instructions**

- (1) **DO NOT TOUCH or MOVE** any ordnance items regardless of the markings or apparent condition.
- (2) **DO NOT** conduct a site visit during an electrical storm or an approaching electrical storm. If a storm approaches during the site visit leave the site immediately and seek shelter.
- (3) **DO NOT** use a radio or cellular phone in the vicinity of a suspect ordnance item.
- (4) **DO NOT** walk across an area where the ground cannot be seen.
- (5) **DO NOT** drive a vehicle into a suspected OE area; use clearly

marked lanes.

(6) DO NOT carry matches, cigarettes, lighters or other flame producing devices into a OE site.

(7) DO NOT rely on color code for positive identification of ordnance items or their contents.

(8) Approach ordnance items from the side; avoid approaching from the front or rear.

(9) Always assume ordnance items contain a live charge until it can be determined otherwise.

(10) Dead vegetation and animals may indicate potential chemical contamination. If a suspect area is encountered, personnel should leave the immediate area and evaluate the situation before continuing the site visit.

**c. Specific Action Upon Locating Ordnance**

(1) DO NOT touch, move or jar any ordnance item, regardless of its apparent condition.

(2) DO NOT be misled by markings on the ordnance item stating "practice", "dummy", or "inert". Practice munitions may contain an explosive charge used for spotting the point of impact. The item may also be mismarked.

(3) DO NOT roll the item over or scrape the item to read the markings.

(4) The location of any ordnance items found during site investigations should be clearly marked so it can be easily located and avoided.

(5) Reporting will be conducted in accordance with CELMS-PM-M, Standard Operating procedure for Reporting Ordnance and Unexploded Ordnance (UXO), dated 19 January 1995.

19. Other (specify)

**G. SITE CONTROL AND COMMUNICATIONS**

1. **Site Map** Map will be maintained by the PM or Safety Officer.



2. **Site Work Zones** N/A

3. **Buddy System** Individuals will maintain constant contact with other personnel at all times. No one will work alone at any time during the site visit.

4. **Communications**

a. **On-Site** Verbal communications will be used among team members.

b. **Off-Site** Communications shall be established on every site. Communications may be established by using an cellular phone or by public or private phone which may be readily accessible. (specify below)

Cellular phone

Public/private phone (location \_\_\_\_\_)

Other \_\_\_\_\_

c. **Emergency Signals** In the case of small groups, a verbal signal for emergencies will suffice. An emergency signal for large groups (i.e. air horn, whistle) should be incorporated at the discretion of the SSHO. (specify below)

Verbal

Nonverbal (specify) \_\_\_\_\_

**H. EMERGENCY RESPONSE** Team members are to be alert to the dangers associated with the site at all times. If an unanticipated hazardous condition arises, stop work, evacuate the immediate area and notify the SSHO. A First Aid Kit and emergency eye wash (if applicable) will be located in the SSHO's field vehicle. If qualified persons (i.e. fire department, medical facility or physician) are not accessible within five minutes of the site at least two team members shall be qualified to administer first aid and CPR.

1. **Emergency/Important Telephone Numbers**

Palerado Sheriffs Department . . . . . (760)458-1898

Hospital . . . . . (760)458-6511

710th Ord. Co. (EOD) . . . . . (619)553-7291/8500

3d Ord. Bn. (EOD) . . . . . (206)967-1972/3/4 853-9952

Huntsville Safety Office . . . . . (205) 895-1598/1596

Huntsville Safety (after hours) . . . . . (205) 895-1180

On-site cellular phone . . . . . (314) 606-4960

St Louis Corps of Engineers . . . . . (314) 331-8036

**2. Hospital/Medical Facility Information**

Name: Poway Medical  
Address: Poway, CA Phone: (760)458-6511

Distance to hospital: Approximately 24 miles.

Route to Hospital: refer to the site map included with this SSHP.

**I. MONITORING EQUIPMENT AND PROCEDURES**

**1. Exposure Monitoring** For non-intrusive on-site activities such as site visits, air monitoring is typically not required. However, if the site situation dictates the need for monitoring, complete the following information on a separate page and attach the page to the SSHP.

a. **Monitoring Equipment To Be Utilized** N/A

b. **Equipment Calibration Results** N/A

c. **Action Levels** N/A

**2. Heat/ Cold Stress Monitoring**

a. Heat Stress monitoring criteria published in Chapter 8 of the NIOSH/OSHA/USCG/EPA "Occupational Safety and Health Guidance Manual for Hazardous Waste Site Activities" shall be followed.

b. Cold Stress monitoring shall be conducted in accordance with the most current published American Conference of Governmental Industrial Hygienists (ACGIH) cold stress standard.

**J. PERSONAL PROTECTIVE EQUIPMENT** Typically, for non-intrusive site visits, Level D is required. If a higher level of protection is to be used initially or as contingency, a brief discussion will be attached. At a minimum personnel shall wear clothing suitable for the weather and work condition. The minimum for field work shall be short sleeve shirt, long trousers, and leather or other protective work shoes or boots. If a higher level of protection is to be used initially or as contingency, a brief discussion will be attached.

**1. Footwear** Footwear providing protection against puncture shall meet the applicable requirements as stated in EM 385-1-1, paragraph 05.A.08. All activities which personnel are potentially exposed to foot hazards will be identified and documented in a hazard analysis.

**2. Hand Protection** Persons involved in activities which subject the hands to injury (e.g., cuts, abrasions, punctures, burns) shall use leather gloves.

**3. Head Protection** Hardhats shall be worn when personnel are subject to potential head injury. The identification and analysis of head hazards will be documented in a hazard analysis.

**4. Eye Protection** Personnel will wear eye protection when activities present potential injuries to the eyes. All eye protection equipment shall meet the requirements as stated in EM 385-1-1, paragraph 05.B.

**K. DECONTAMINATION PROCEDURES** Decontamination procedures are not anticipated for this site investigation. Team members are cautioned not to walk, kneel or sit on any surface with potential leaks, spills or contamination.

**L. TRAINING** All site personnel shall have completed the training required by EM 385-1-1 and 29 CFR 1910.120 (e). The U.S. Army Corps of Engineer (USACE) Project Manager shall ensure, and the SSHO shall verify, that all on-site personnel have completed appropriate training. Additionally, the SSHO shall inform personnel before entering, of any potential site-specific hazards and procedures.

**M. MEDICAL SURVEILLANCE PROGRAM** The USACE Project Manager shall ensure, and the SSHO shall verify, that all on-site personnel are on the Medical Surveillance Program meeting the requirements of 29 CFR 1910.120, and ANZI Z-88.2, as appropriate, depending on the PPE and site specific tasks.

NAME	HAZWOPER	PROVIDER	MEDICAL
		DATE	DATE
<u>Randy Curtis</u>	<u>Jan 98</u>	<u>Corps of Engineers</u>	<u>Oct 97</u>
<u>William K. James</u>	<u>Dec 97</u>	<u>Corps of Engineers</u>	<u>Oct 97</u>
<u>Jennifer J. James</u>	<u>Jan 98</u>	<u>Corps of Engineers</u>	<u>Oct 97</u>

**N. LOGS, REPORTS AND RECORDKEEPING** Site logs are maintained by the Project Manager and SSHO. This is to include historical data, personnel authorized to visit the site, all records, standard operating procedures, air monitoring logs and the SSHP.

**O. GENERAL** The number of personnel visiting the site shall be a limited to a minimum of two, maximum of eight. The more personnel on-site, the greater potential for an accident. The SSHO may modify this SSHP if site conditions warrant it and without risking the safety and health of the team members. This modification will be coordinated with the team members. The SSHO shall notify Corps of Engineers Safety Office in Huntsville, AL. of the change as the situation allows.

## APPENDIX A

### HEAT- RELATED INJURIES

Once the signals of a heat-related illness begin to appear, the victim's condition can quickly get worse. A heat related illness can result in death. If you see any of the signals of sudden illness, and the victim has been exposed to extremes of heat, suspect a heat-related illness.

People at risk for heat-related illness include those who work or exercise outdoors, elderly people, young children, and people with health problems. Also at risk are those who have had a heat-related illness in the past, those with medical conditions that cause poor blood circulation, and those who take medications to get rid of water from the body (diuretics).

People usually try to get out of extreme heat before they begin to feel ill. However, some people do not or can not. Those that work outdoors often keep working even after they begin to feel ill. Many times, they might not even recognize that they are in danger of becoming ill.

Heat cramps, heat exhaustion, and heat stroke are conditions caused by overexposure to heat. You can help prevent heat-stress emergencies by recognizing and properly treating symptoms. Below is a quick reference guide to heat-related emergencies:

**HEAT CRAMPS** Heat cramps are the least severe, and often are the first signals that the body is having trouble with the heat. *Symptoms* include: Muscle twitching; painful spasms in the legs, arms or abdomen.

#### WHAT TO DO:

- Have the individual rest in a cool place.
- Give cool water or a commercial sports drink.
- lightly stretch the muscle and gently massage the area.

**HEAT EXHAUSTION** Heat exhaustion is a more severe condition than heat cramps. *Symptoms* include: cool, moist, pale, or flushed skin, headache, nausea, dizziness, weakness, and exhaustion.

**HEAT STROKE** Heat stroke is the least common but most severe heat emergency. It most often occurs when people ignore the signals of heat exhaustion. Heat stroke develops when the body systems are overwhelmed by heat and begin to stop functioning. Heat stroke is a serious medical emergency. *Symptoms* include: red, hot, dry skin; changes in consciousness; rapid, weak pulse; and rapid, shallow breathing.

**WHAT TO DO:** When you recognize a heat-related illness in its early stages, you can usually reverse it.

- Get the victim out of the heat.
- Loosen any tight clothing and apply cool, wet cloths, such as towels or sheets.

- If the victim is conscious, give cool water to drink. Do not let the conscious victim drink too quickly. Give about 1 glass (4 ounces) of water every 15 minutes.
- Let the victim rest in a comfortable position, and watch carefully for changes in his or her condition. The victim should not resume normal activities the same day.
- Refusing water, vomiting, and changes in consciousness mean that the victim's condition is getting worse. Call for an ambulance immediately if you have not already done so.
- If the victim vomits, stop giving fluids and position them on their side.
- Watch for signals of breathing problems.
- Keep the victim lying down and continue to cool the body any way you can. If you have ice packs or cold packs, place them on each of the victim's wrists and ankles, on the groin, in each armpit, and on the neck to cool the large blood vessels.

## APPENDIX B

### BITES AND STINGS

#### Scorpions, Bees and Spiders

Bee stings are painful, but rarely fatal. Some people, however have a severe allergic reaction to an insect sting. This allergic reaction may result in a breathing emergency. If someone is stung by an insect, remove the stinger. Scrape it away with from the skin with your fingernail or plastic car, such as a credit card, or use tweezers. If you use the tweezers, grasp the stinger, not the venom sac. Wash the site with soap and water. Cover it to keep it clean. Apply a cold pack to the area to reduce the pain and swelling. Watch the victim for signals of an allergic reaction.

Scorpions live in dry regions of the southwestern United States and Mexico. They live under rocks, logs, and the bark of certain trees and are most active at night. Only a few species of scorpions have a sting that can cause death.

Spiders; there are also only two spiders in the United States whose bite can make you seriously sick or be fatal. These are the black widow spider and the brown recluse. The black widow is black with a reddish hourglass shape on the underside of its body. The brown recluse is light brown with a darker brown, violin-shaped marking on the top of its body. Both spiders prefer dark, out of the way places. Often, the victim will not know that he or she has been bitten until he or she starts to feel ill or notices a bite mark or swelling.

*Symptoms:* include nausea and vomiting, difficulty breathing or swallowing, sweating and salivating much more than normal, severe pain in the sting or bite area, a mark indicating a possible bite or sting, and swelling of the area.

*First Aid:* if someone has been stung by a scorpion or bitten by a spider he or she thinks is a black widow or brown recluse, wash the wound, apply a cold pack to the site, and get medical help immediately.

#### Ticks - Lyme Disease

##### *Transmission:*

Lyme Disease (LD) is most commonly transmitted by a tick bite (usually painless). The tick vectors include *Ixodes scapularis* (Deer Tick), *Ixodes dammini* (Deer tick), *Amblyomma americanum* (Lone Star Tick) and *Ixodes pacificus*. *Ixodes dammini* was thought to be the only species responsible for transmission until it was shown to be the same as *Ixodes scapularis* in 1993. The ticks prefer to live in wooded areas, low growing grassland, seashores and yards. Depending on the location, anywhere from less than 1% to more than 90% of the ticks are infected with spirochetes.

The Deer tick has a 2 year life cycle and must feed 3 times. In the larvae stage, it is tan, the size of a pin head and feeds on small animals like the mouse where it can pick up the spirochete. During the nymph stage the tick is the size of a poppy seed, beige or partially transparent and feeds on larger animals such as cats, dogs and humans. The adult ticks are black and/or reddish and feed on cattle, deer, dogs and humans. The Lone Star tick is grey with a white dot. April through October is considered the "tick season" even though Lyme disease is a year round problem. Ticks are very active in the spring and early summer.

*Location:*

Cases of Lyme disease have been reported in virtually every state, although the Northeastern, Great Lakes, and Pacific Northwest areas are particularly endemic.

*Symptoms:*

Lyme disease is called the "Great Imitator" because it can mimic many other diseases, which makes diagnosis difficult. A rash can appear several days after infection, or not at all. It can last a few hours or up to several weeks. The rash can be very small or very large (up to twelve inches across). A "bulls-eye" rash is the hallmark of LD. It is a round ring with central clearing. Unfortunately, this is not the only rash associated with Lyme. Various other rashes associated with LD have been reported. One bite can cause multiple rashes. The rash can mimic such skin problems as hives, eczema, sunburn, poison ivy, flea bites, etc. The rash can itch or feel hot or may not be felt at all. The rash can disappear and return several weeks later. For those with dark skin the rash will look like a bruise. If you notice a rash, take a picture of it. Some physicians require evidence of a rash before prescribing treatment.

Early Symptoms: Several days or weeks after a bite from an infected tick, a patient usually experiences "flu-like" symptoms such as aches and pains in their muscles and joints, low grade fever, and/or fatigue.

Other Possible Symptoms -- No organ is spared:

- Jaw -- pain, difficulty chewing
- Bladder -- frequent or painful urination, repeated "urinary tract infection"
- Lung -- respiratory infection, cough, asthma, pneumonia
- Ear -- pain, hearing loss, ringing, sensitivity to noise
- Eyes -- pain due to inflammation, sensitivity to light, scleritis drooping of eyelid, conjunctivitis, blurring or double vision
- Throat -- sore throat, swollen glands, cough, hoarseness, difficulty swallowing
- Neurological -- headaches, facial paralysis, seizures, meningitis, stiffneck, burning, tingling, or prickling sensations, loss of reflexes, loss of coordination, MS like syndrome
- Stomach -- pain, diarrhea, nausea, vomiting, abdominal cramps, anorexia
- Heart -- weakness, dizziness, irregular heart-beat, myocarditis, pericarditis, palpitations, heart block, enlarged heart, fainting inflammation of muscle or membrane, shortness of breath, chest pain

- Joint -- arthralgias or arthritis, muscle inflammation and pain
- Other Organs -- liver infection, elevated liver enzymes, enlarged spleen, swollen testicles, irregular or ceased menses
- Neuropsychiatric -- mood swings, irritability, poor concentration, cognitive loss, memory loss, loss of appetite, mental deterioration, depression, disorientation, sleep disturbance
- Pregnancy -- miscarriage, premature birth, birth defects, stillbirth
- Skin -- single or multiple rash, hives

The above is a list of possible symptoms. They can occur in any combination. You may have one or several symptoms but not everyone will experience every symptom. Lyme affects each host in a different way. Having one or many of these symptoms does not indicate that you have Lyme disease. Diagnosis for Lyme is a clinical one and must be made by a physician experienced in recognizing LD. Serological testing is not reliable.

#### *Lyme Disease Prevention:*

- Dress properly, wear long-sleeved shirts that button at the wrist, long pants tucked into socks, and closed shoes. Choose light-colored fabric so you can spot and brush off ticks.
- Apply approved tick repellent and use only as directed. Products that contain DEET are tick repellents. They do not kill the tick and are not 100% effective in discouraging a tick from feeding on you. Products like Permanone contain permethrin and are known to kill ticks. However, they are not to be sprayed on the skin. Permanone can be sprayed on clothing. Once it is dry it is assumed to be safe. Ticks are anti-gravitational. They are generally seeking the highest point. If they get on your body below the clothes line, one hopes they will travel up and die once they come in contact with treated clothing.
- Always do regular tick checks when outdoors.
- Shower after all outdoor activities are over for the day. If the tick is still wandering it may wash off. Check all body parts that bend. Run fingers gently over skin. If there is a tick and it is attached, it will feel like the last piece of scab left before a cut completely heals. Remove ticks promptly and properly from yourself.

#### *Proper Tick Removal:*

Using fine-tipped tweezers, grasp tick close to the skin. Apply gentle, steady straight upward pressure to remove. Disinfect the bite site. Do not squeeze the body, apply Vaseline, use a burnt match, or clean with alcohol while the tick is attached. Any of these actions could cause transmission of the bacteria. Save the tick for testing. Put it in a vial or ziplock bag with a blade of grass. Contact your doctor for further instructions.

The best defense against LD is education. Know your facts.



APPENDIX C

SSHP ACCEPTANCE FORM  
ABBREVIATED SITE SAFETY AND HEALTH PLAN  
FOR  
Ramona Bombing Target  
San Diego, CA

I have read and agree to abide by the contents of the Site Safety and Health Plan.

NAME	OFFICE	SIGNATURE	DATE
<u>Randy Curtis</u>	<u>USACE-STL, CEMVS-ED-P</u>	<u>Randy Curtis</u>	<u>30 March 98</u>
<u>William K. James</u>	<u>USACE-STL, CEMVS-ED-P</u>	<u>William K. James</u>	<u>30 Mar 98</u>
<u>Jennifer J. James</u>	<u>USACE-STL, CEMVS-ED-P</u>	<u>Jennifer J. James</u>	<u>30 March 98</u>

**SITE SURVEY SAFETY BRIEFING**

(Check subjects discussed)

Date \_\_\_\_\_

**GENERAL INFORMATION**

- \_\_\_\_\_ Purpose of Visit
- \_\_\_\_\_ Identify Key Site Personnel

**SITE SPECIFIC INFORMATION**

- \_\_\_\_\_ Site Description/Past Use
- \_\_\_\_\_ Results of Previous studies
- \_\_\_\_\_ Potential Site Hazards
- \_\_\_\_\_ OE Safety Procedures
- \_\_\_\_\_ Site SOP
- \_\_\_\_\_ Site Control and Communications
- \_\_\_\_\_ Emergency Response
  - ( ) Location of First aid Kit
  - ( ) Emergency Phone Numbers
  - ( ) Map to Facility
- \_\_\_\_\_ PPE
- \_\_\_\_\_ Weather Precautions
  - ( ) Cold/Heat
  - ( ) Severe Weather

**Safety Briefing Attendance**

All team members and any accompanying personnel will be briefed and sign this form.

NAME (Print)	ORGANIZATION	SIGNATURE
<u>Randy Curtis</u>	<u>USACE-STL, CEMVS-ED-P</u>	<u><i>Randy Curtis</i> 30 Mar '98</u>
<u>William K. James</u>	<u>USACE-STL, CEMVS-ED-P</u>	<u><i>William K. James</i> 30 Mar '98</u>
<u>Jennifer J. James</u>	<u>USACE-STL, CEMVS-ED-P</u>	<u><i>Jennifer J. James</i> 30 Mar '98</u>

## **APPENDIX L-2**

### **Site Inspection Report - Ramona Bombing Target and Emergency Landing Field**

CEMVS-ED-P

30 March 1998

**MEMORANDUM FOR RECORD**

**SUBJECT: ASR Site Inspection: Ramona Bombing Target and Emergency Landing Field - California**

1. Personnel from the St. Louis District Corps of Engineers travelled to California to perform a site survey of the former Ramona Bombing Target and Emergency Landing Field. The Ordnance and Explosive (OE) and Chemical Warfare Materials (CWM) Archive Search Report (ASR) program requires a site inspection. The ASR program supports the Defense Environmental Restoration Program (DERP) at Formerly Used Defense Sites (FUDS).
2. The ASR site inspection characterized OE and CWM potential based on a visual examination at the former Ramona Bombing Target and Emergency Landing Field. Land owners granted verbal permission for right-of-entry prior to the site inspection. The site inspection included only visual and non-intrusive methods of inspection. The team followed a site safety and health plan (SSHP) prohibiting digging or handling of potential OE/CWM. The inspection team consisted of the following personnel: Jennifer J. James, William K. James and Randal S. Curtis.
3. The team arrived at the Ramona Airport on 30 March 1998 at 1415. They scheduled an appointment with Rick Jenkins, Ramona Airport Manager (760-788-6174) and Theresa Morrison (714-640-0791), President of Cagney Enterprises. The inspection team briefed the property holders on the research findings and showed them the aerial photography with the bomb target highlighted. The bomb target is on Cagney Enterprises' property.
4. The team drove out on the former drag strip south of the airport runway. As they approached the fence line between Section 18 and 19, sheet metal debris was evident for about 250 feet along the fence line. The coordinates were N 33° 02' 12.2", W 116° 54' 53.5"<sup>4</sup>. The sheet metal appeared to be from 100 pound practice bombs MK VII and XV. The team also found a single cast iron, 3 pound miniature practice bomb (i.e. AN-MK 23) at N 33° 02' 10.0", W 116° 54' 55.5". The team did not find any evidence of the 25 pound practice bombs described as recovered by law enforcement agencies during the INPR investigation.
5. The bomb target center consisted of 2 inch diameter steel pipe about 2 feet above ground surrounded by rocks at coordinates N 33° 02' 10.0", W 116° 54' 54.1". The team could not delineate the concentric circle surrounding the center. The site inspection team did not

---

<sup>4</sup> All coordinates were taken with a Trimble Scout GPS (Global Positioning Satellite) receiver using mapping datum WGS 1984.

CEMVS-ED-P

**SUBJECT: ASR Site Inspection: Ramona Bombing Target and Emergency Landing Field - California**

discover any fragmentation or cratering indicating the use of high explosives (HE) on the target.



RANDAL S. CURTIS, P.E.  
Project Manager/Civil Engineer



JENNIFER J. JAMES  
Quality Assurance Specialist  
Ammunition Surveillance (QASAS)



WILLIAM K. JAMES  
Safety and Occupational Health Specialist  
Quality Assurance Specialist  
Ammunition Surveillance (QASAS)

**APPENDIX M**  
**REPORT DISTRIBUTION LIST**

**REPORT DISTRIBUTION LIST**

<u>Addressee</u>	<u>No. Copies</u>
Commander, U.S. Army Engineering and Support Center Huntsville, ATTN: CEHNC-ED-SY-O (D. MARDIS) P.O. Box 1600 Huntsville, Alabama 35807-4301	2
Commander, U.S. Army Engineer District, Los Angeles ATTN: CESPL-ED-MI 911 Wilshire Boulevard P.O. Box 2711 Los Angeles, CA 90053-2325	1
Project Manager Chemical Demilitarization, Non-Stockpile ATTN: SFAE-CD-NM Aberdeen Proving Ground, Maryland 21010-5401	1
Commander, U.S. Army Chemical & Biological Defense Command ATTN: AMSCB-CIH, Bldg. E5183 Aberdeen Proving Ground, MD 21010-5423	1
U.S. Army Technical Center for Explosives Safety ATTN: SIOAC-ESM Savanna, IL 61074-9639	1

**PLATES**



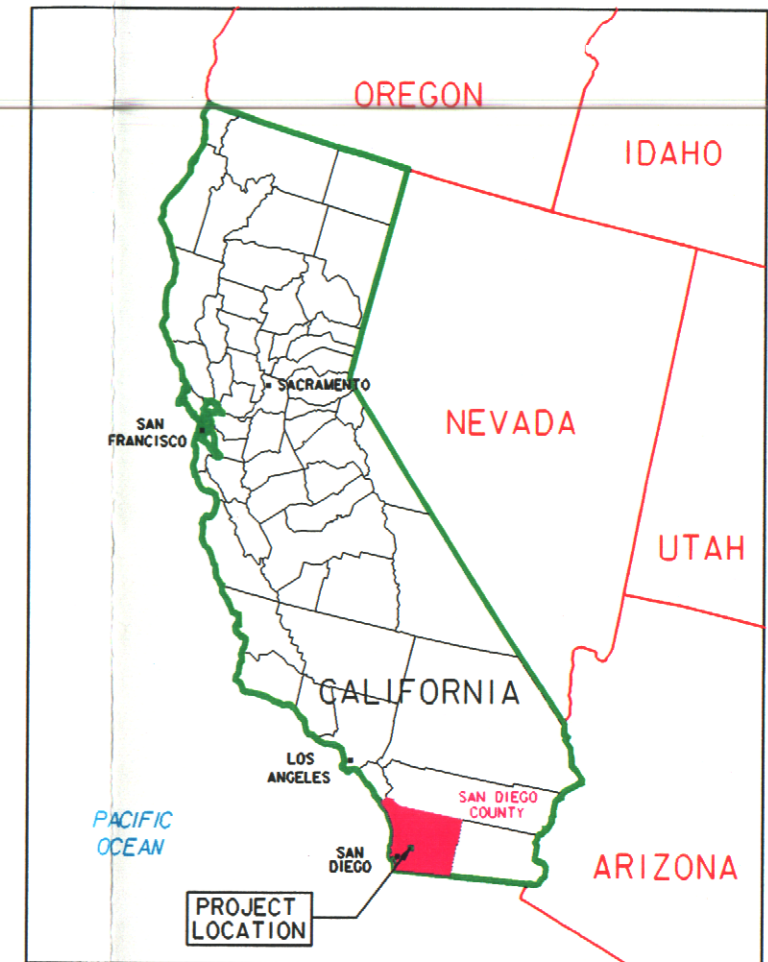
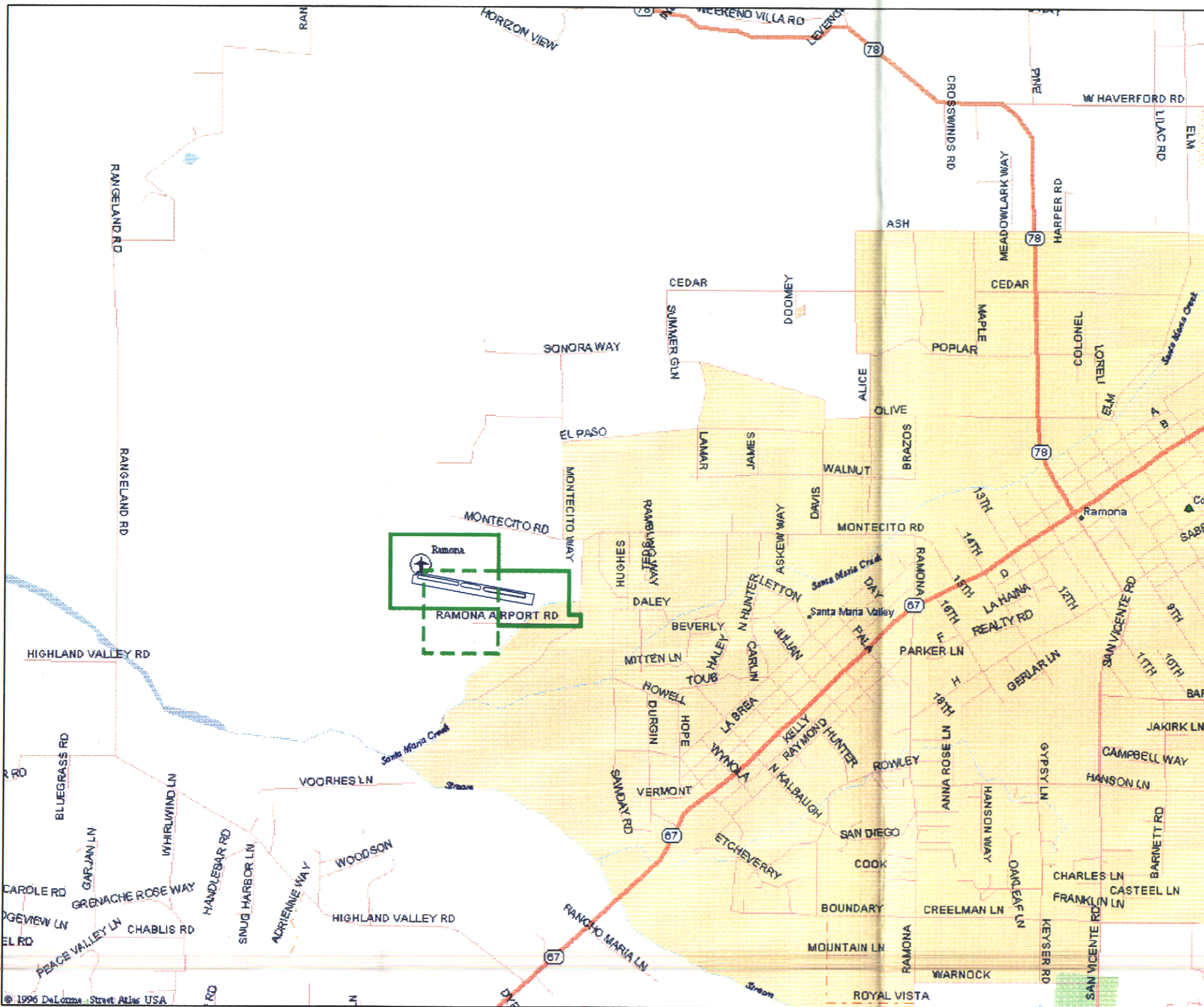
- 1 **Ramona Bombing Target and Emergency Landing Field - Vicinity Map**
- 2 **Ramona Bombing Target and Emergency Landing Field - Aerial Photograph-1949**

Computer-Aided Design and Drafting (CADD) files are referenced to USGS quadrangles at a scale of 1:24,000. The quadrangles conform to National Map Accuracy Standards (NMAS), which provide that vertical accuracy on maps of such scale are within one (1) contour interval, and horizontal accuracies are within 60 feet.

Minor distortions are associated with rectifying or georeferencing quadrangles to a known grid and projection, scanning historical documents (and subsequent vector-to-raster conversion), and rectifying the scanned historical maps to the georeferenced quadrangle.

Each of the above steps may introduce minute positional errors in the location of historical objects delineated on CADD drawings and plates. The caveat "NOT TO SCALE" will be used when the original historical map is not considered to conform to NMAS. Many of the historic maps used were hand-drawn or built on survey data that was inaccurate by modern standards. In general, historic maps used can have significant distortions, which are then magnified by the georeferencing process. CADD Drawings containing historic maps and drawings will have an accuracy no greater than that of the compilation accuracy of the historic document.

Furthermore, aerial photography used in CADD plates has not been orthorectified. While photography used in CADD plates has been rectified (georeferenced) to a coordinate system, the photos have not been corrected for photogrammetric displacements such as those due to topography or the attitude of the aircraft at the time of imaging. Therefore, locations of features detected on aerial photography are not exact due to the rectifying of both the image and the base map.



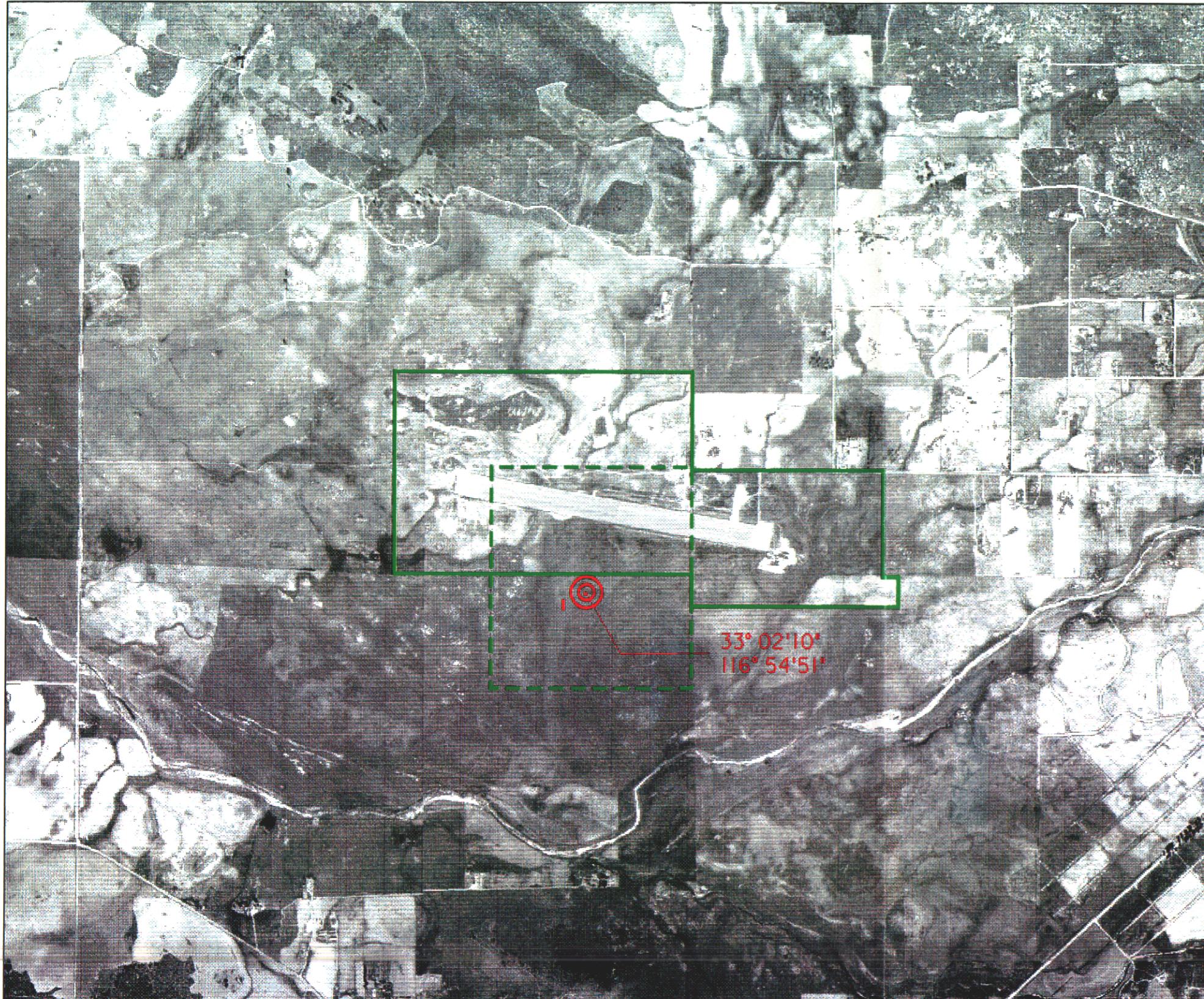
- RAMONA EMERGENCY LANDING FIELD
- RAMONA BOMBING TARGET



ORDNANCE AND TECHNICAL SERVICES BRANCH  
 U.S. ARMY CORPS OF ENGINEERS  
 ST. LOUIS DISTRICT

**RAMONA BOMBING TARGET  
 AND EMERGENCY LANDING FIELD  
 RAMONA, CALIFORNIA  
 SAN DIEGO COUNTY  
 DERP-FUDS\* J09CA106901  
 VICINITY MAP**




© 1996 DeLorme Street Atlas USA

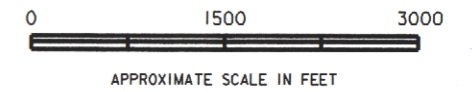


KEY TO FEATURES:

FEATURE NUMBER	FEATURE DESCRIPTION
I.	BOMBING TARGET; TWO CONCENTRIC RINGS WITH DIAMETERS APPROXIMATELY 200 AND 400 FEET

LEGEND

-  RAMONA EMERGENCY LANDING FIELD
-  FEATURE LOCATION
-  RAMONA BOMBING TARGET



ORDNANCE AND TECHNICAL SERVICES BRANCH  
 U.S. ARMY CORPS OF ENGINEERS  
 ST. LOUIS DISTRICT

**RAMONA BOMBING TARGET  
 AND EMERGENCY LANDING FIELD  
 RAMONA, CALIFORNIA  
 SAN DIEGO COUNTY  
 DERP-FUDS\* J09CA106901  
 AERIAL PHOTOGRAPHS-1949**