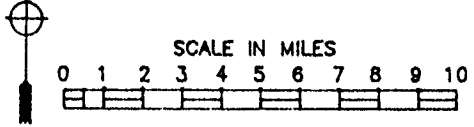


34° 39' 05" N
117° 12' 00" W

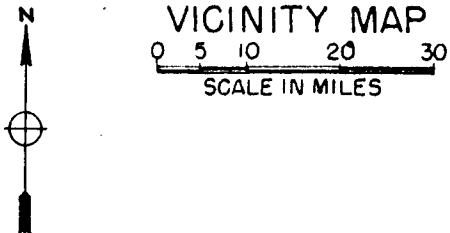
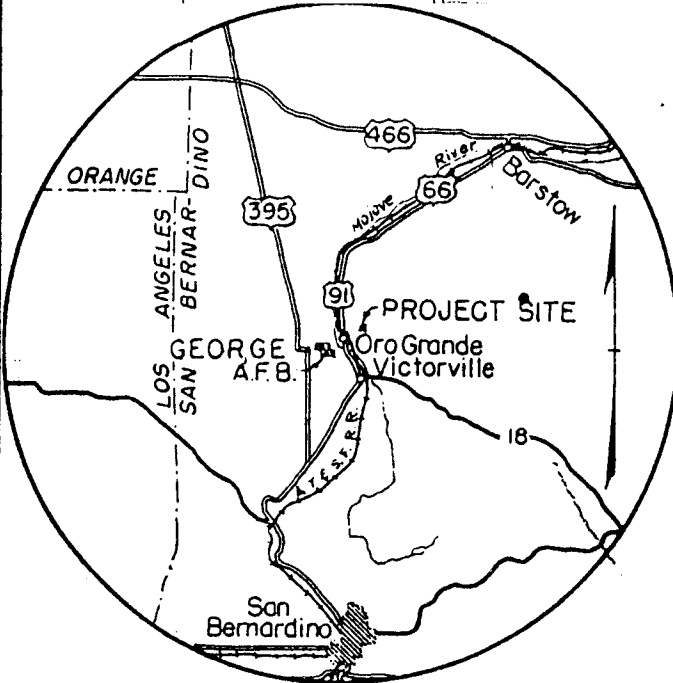
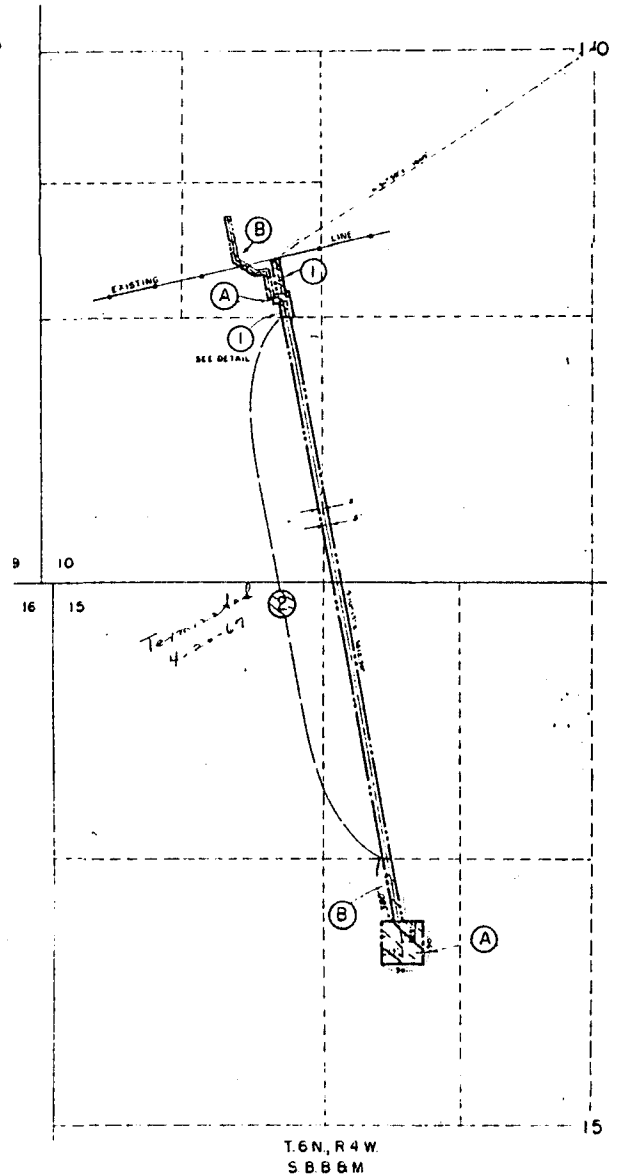
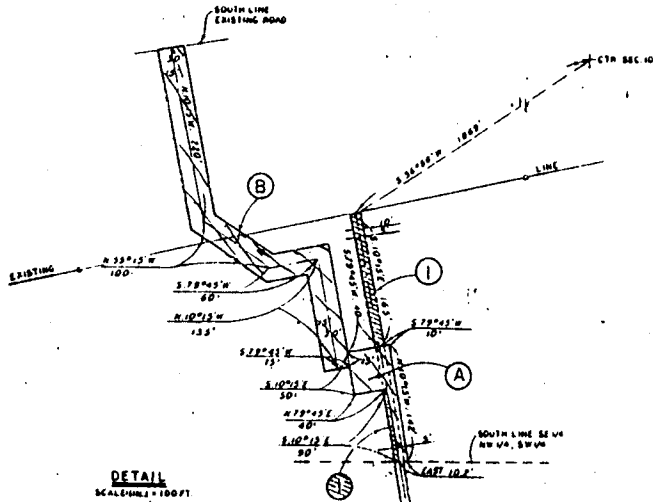


REFERENCE San Bernardino County
Automobile Club of Southern California &
California State Automobile Association Map

MESA ENGINEERING, INC. 207 E. POMONA BLVD. SUITE A MONTEREY PARK CA. 91754		U.S. ARMY ENGINEER DISTRICT LOS ANGELES CORPS OF ENGINEERS	
SITE LOCATION SILVER PEAK VICTORVILLE CALIFORNIA		DATE 12 July 1993	
SITE NUMBER J09CA005400		FIGURE 1	
LOCATION MAP			

TRACT REGISTER OF ACQUISITION AFTER 1 JULY 1940

TRACT NO.	LAND OWNER	ACREAGE		REMARKS
		TRANS.	LEASED	
A	DEPARTMENT OF THE INTERIOR	0.14		Air Navigation Site Withdrawal (Los Angeles 0137762) dated 28 September 1957. Includes 0.08 Ac. formerly shown as a portion of Tract 1.
B	DEPARTMENT OF THE INTERIOR	0.44		Recorded on Public Land Records 6 May 1957 (Los Angeles 0137762) pursuant to Dept. of the Interior Regulation 44 LD 513. Includes 0.09 Ac. formerly shown as a portion of Tract 1.
1	DEPARTMENT OF THE INTERIOR	0.05		By Use Permit from Department of the Interior, undated. Retransferred to Department of the Interior on 10-28-52.
2	SOUTHWESTERN PORTLAND CEMENT COMPANY		0.62	Lease DA-04-353-eng-8616 dated 10-27-62, eff. 10-28-62. Formerly acq. by Lease W04-193-eng-6313 dated 9-8-45, as amended by S/A Nos. 1 and 2, eff. 5-1-43 to 10-27-62.



REFERENCE
Project Ownership Map
Department of The Army

MESA ENGINEERING, INC. 207 E. POMONA BLVD. SUITE A MONTEREY PARK CA. 91754		U.S. ARMY ENGINEER DISTRICT LOS ANGELES CORPS OF ENGINEERS	
SITE LOCATION SILVER PEAK VICTORVILLE CALIFORNIA			DATE. 12 July 1993
SITE NUMBER J09CA005400		FIGURE. 2	
SITE MAP			