

600.914 (Los Angeles) CM 79348 ~~CONFIDENTIAL~~

SPEKM-1

REPORT OF COMPLETED WORKS - SEACOAST FORTIFICATIONS
(Batteries)

HARBOR DEFENSES OF LOS ANGELES
FORT MAC ARTHUR (ROCKY POINT)
BATTERY PANAMA MOUNTS No. of guns 3
Caliber 155 MM Carriage MOBILE

Part I Corrected to 31 January 1944.

79348

GENERAL:

Battery commenced: December 1941 (original 2 mounts)
Battery completed: September 1943 (see "Remarks")
Date of transfer: 11 September 1943
Cost to date of transfer: \$19,809.00
Materials of construction: Reinforced concrete
Battery new or modernized: New

Trunnion elevation in battery: Mobile carriage
Datum plane: Mean Lower Low Water

UTILITIES:

WATER SUPPLY

Source of: Palos Verde Water Co. (by Post Engineer)
Alternate source: --
Size of main: --

SEWER:

Connected to sewer: No
Type of disposal: None
Type of latrine: None

"
"
" UTILITIES: (Contd.)
" ELECTRIC POWER
" Sources of: So. Calif. Edison Co. (Commercial power)
" Procured & installed by: Post Engineer
" Characteristics: Voltage 110 AC 50 cycle
" Number of units and capacity: None
" Max. K.W. required for utilities: 1 K.W.
" Max. K.W. required for nonbattle conditions: 2.5 K.W.
" Commercial power provided: No
" Auxiliary power unit provided: No.
" Type of lighting fixtures: Vapor-proof, in magazines
" Dehumidifying unit Make and capacity: None
" Rooms wet or dry: Dry
" How ventilated: Not ventilated
" How heated: Not heated
" DATA TRANSMISSION:
" Type: Field telephone
"
" REMARKS:
" Completion date includes construction of one additional
" mount with ammunition shelters and trenches authorized Dec.
" 1942 and July 1943, respectively.
" Origin of coordinates to gun positions shown on accompanying
" Part VII, is station "R"(U.S.C. & G.S. station "Deadman's Is.")

ARMAMENT

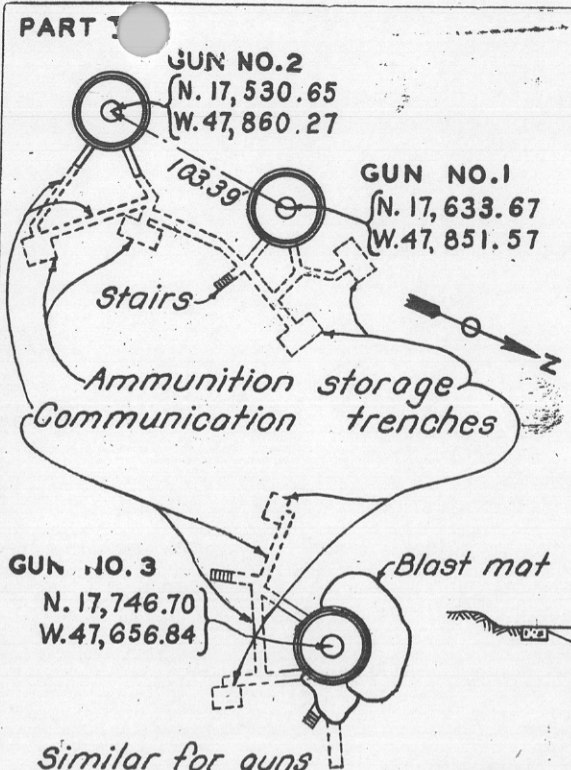
Emplacement Number	Guns					Carriages					
	Cal.	Length	Model	Serial No.	Manufacturer	Mounted	Type	Model	Serial No.	Manufacturer	Motor
1	"155 MM'										
2	"155 MM'										
3	"155 MM'					Mobile	-			Mounted by Coast Artillery	

See Proj Cards 11, 19 #64

~~CONFIDENTIAL~~

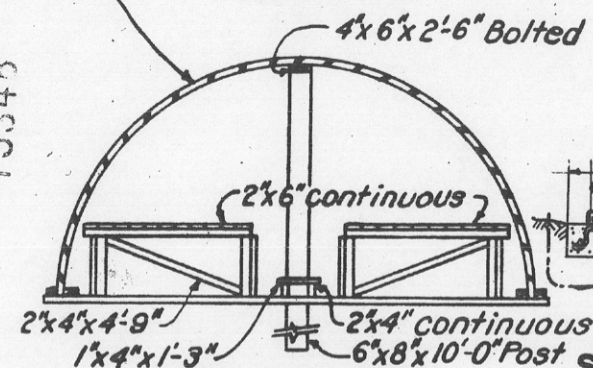
Sub 1'

~~CONFIDENTIAL~~

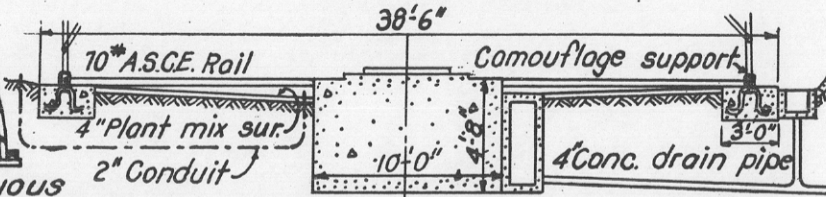


79348

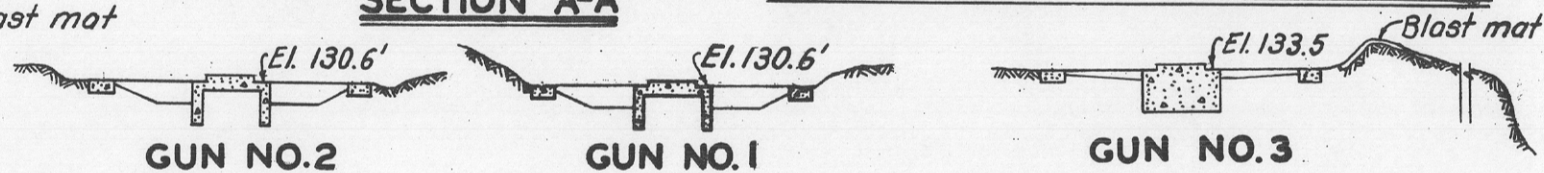
Multi-plate Corrugated Arch 6
 Plate Base 180.0" Rise 92.7" Gage 7.
 Ground line



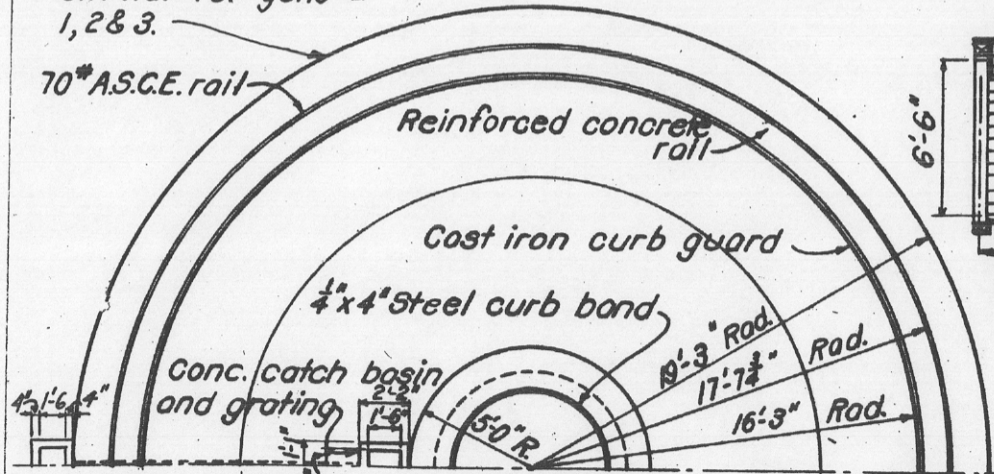
SECTION A-A



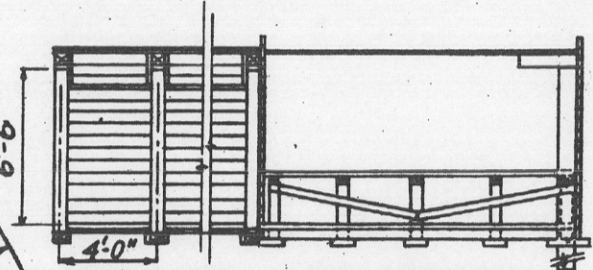
SECTION THRU PLATFORM, GUN NO. 3



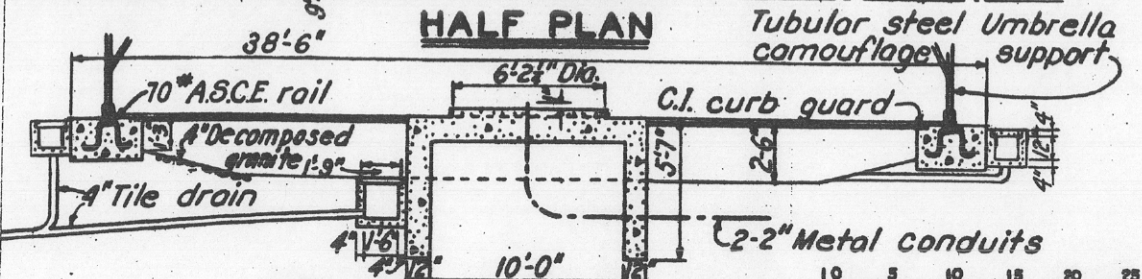
Similar for guns
 1, 2 & 3.



HALF PLAN

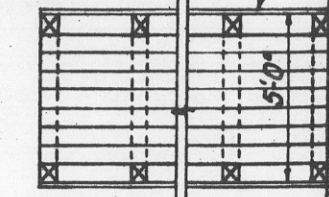


SECTION THRU TRENCH & STORAGE

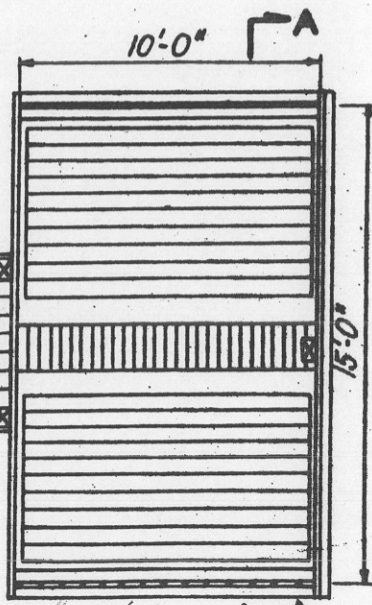


SECTION THRU PLATFORM

Covered trench



PLAN



~~CONFIDENTIAL~~

Incl 2'