

(TYPE) FINAL

PROJECT OWNERSHIP MAP

STATE CALIFORNIA
COUNTY SAN FRANCISCO
DIVISION SOUTH PACIFIC
DISTRICT SAN FRANCISCO
6TH ARMY AREA

LOCATION OF PROJECT

1.5 MILES NE. OF SAN FRANCISCO
MILES OF

TRANSPORTATION FACILITIES

RAILROADS KEY SYSTEM
STATE ROADS
FEDERAL ROADS U.S. HWYS 40 & 50
AIRLINES

ACQUISITION

TOTAL ACRES ACQUIRED 9.10
ACRES FEE
ACRES TRANSFER PRIOR 1940 9.10
ACRES LEASED TO WAR DEPT.
ACRES LESSER INTERESTS

DISPOSAL

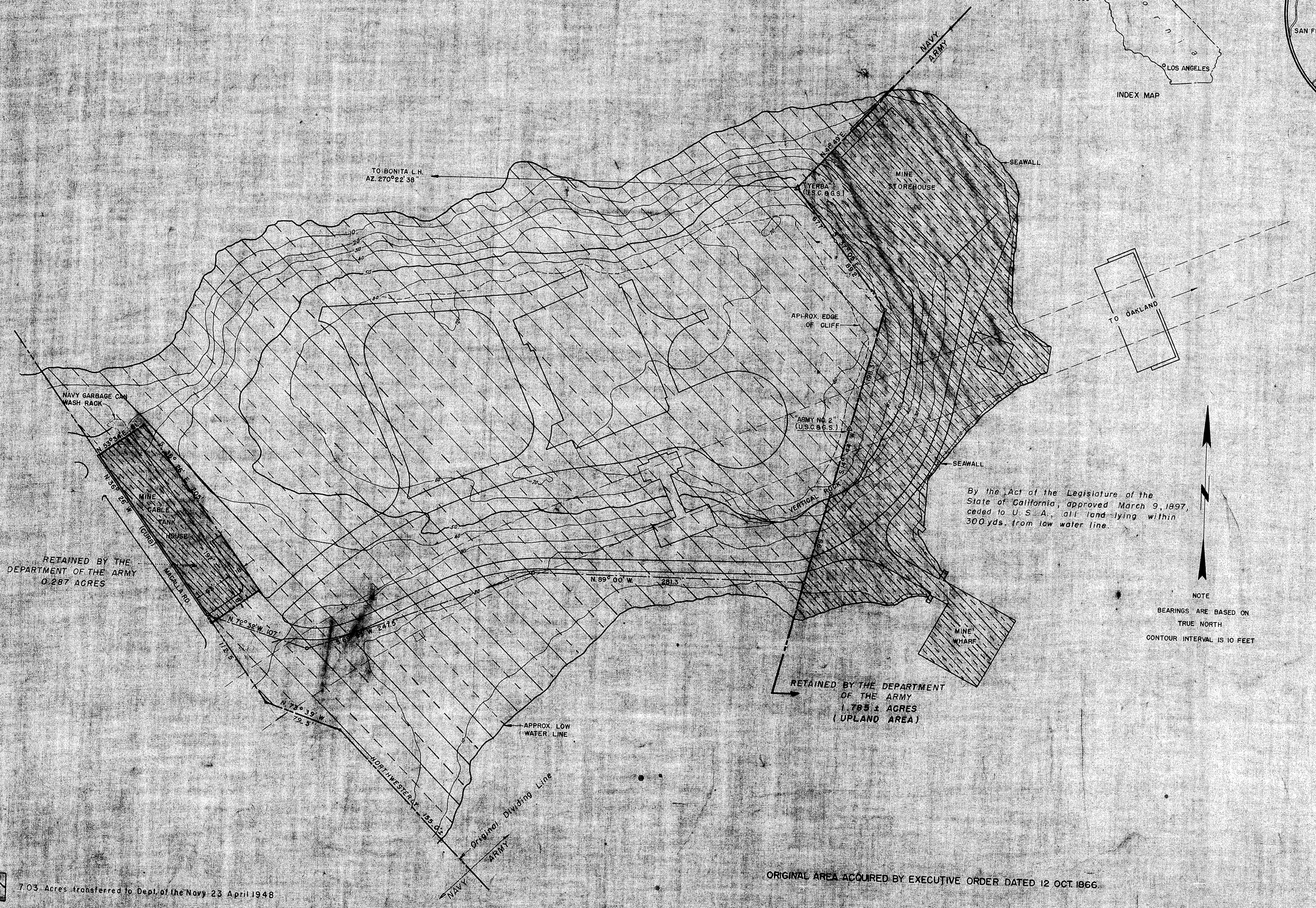
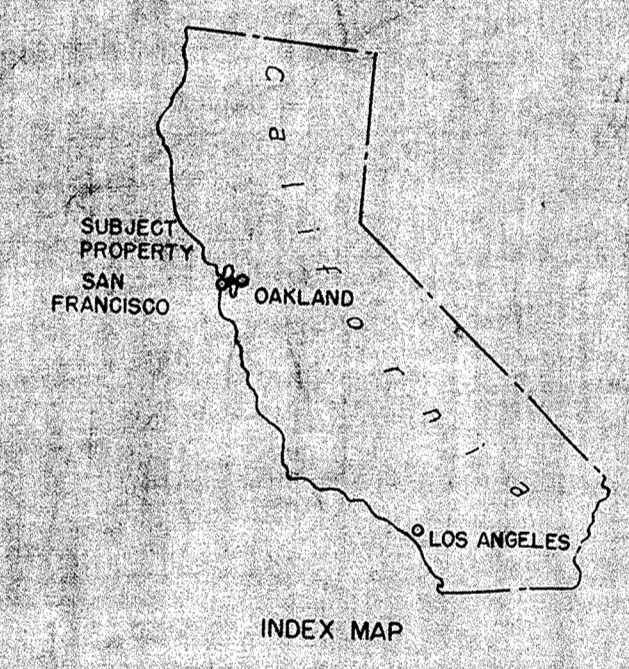
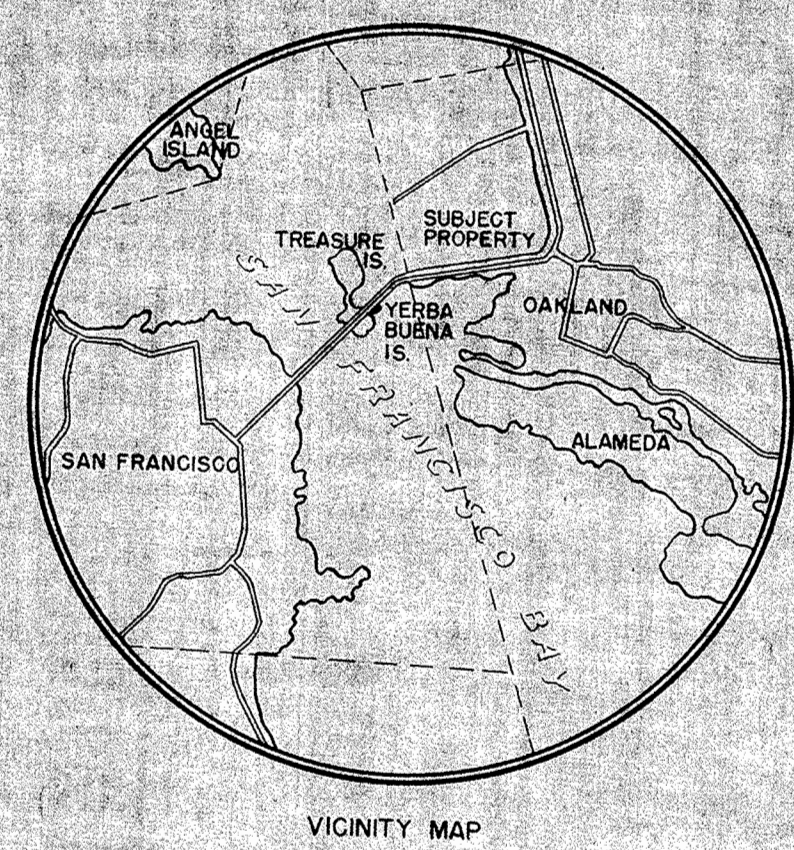
TOTAL ACRES DISPOSED OF
ACRES SOLD BY WAR DEPT.
ACRES TRANSFERRED BY WAR DEPT.
ACRES RETRANSFERRED TO GOVT. AGCY. 9.10
ACRES LEASES TERMINATED
ACRES LESSER INT'S TERM.

LEGEND

NOTE: USE SYMBOLS FROM FM-21-30 (WAR DEPT. BASIC FIELD MANUAL) PAGES 21 TO 27 INCL. EXCEPT

- RESERVATION LINE
- RESERVATION LINE (Actual Survey)
- DAM SITE (Taking Line)
- RESERVOIR SITE (Taking Line)
- CONTOUR LINES
- AVIGATION EASEMENTS
- TRACT NUMBER

99



By the Act of the Legislature of the State of California, approved March 9, 1897, ceded to U.S.A., all land lying within 300 yds. from low water line.

NOTE
BEARINGS ARE BASED ON TRUE NORTH
CONTOUR INTERVAL IS 10 FEET

RETAINED BY THE DEPARTMENT OF THE ARMY
0.287 ACRES

RETAINED BY THE DEPARTMENT OF THE ARMY
1.795 4 ACRES (UPLAND AREA)

ORIGINAL AREA ACQUIRED BY EXECUTIVE ORDER DATED 12 OCT 1866

- 7.03 Acres transferred to Dept. of the Navy 23 April 1948
- 2.07 Acres transferred to Dept. of the Navy 22 December 1961

Note: Bearings shown herewith differ by 9 min. from those shown on Map No. 6797-101 entitled 'Yerba Buena Island (Goat Island) California Reservation Map', dated December 1935, revised 10 December 4, 1939 on file in the Office of the Quartermaster General, War Department, Washington, D.C. Bearings may be made applicable by subtracting 9' and rotating clockwise.

REVISIONS	DATE	BY
	5-19-55	J.C.M.
Disposal data Added		

DEPARTMENT OF THE ARMY
OFFICE OF THE DIVISION ENGINEER
SOUTH PACIFIC DIVISION

REAL ESTATE
PROPOSED BOUNDARY REVISION TO
YERBA BUENA ISLAND
MILITARY RESERVATION

DRAWN BY: _____
TRACED BY: M.C.
CHECKED BY: _____
SUBMITTED BY: _____
RECOMMENDED BY: _____
CHIEF, CADASTRAL SEC. _____
CHIEF, PROJ. OR SUB. OFF. _____
APPROVED BY: _____
DIVISION REAL ESTATE OFFICER _____
OFFICE, CHIEF OF ENGINEERS, WASHINGTON, D.C. _____

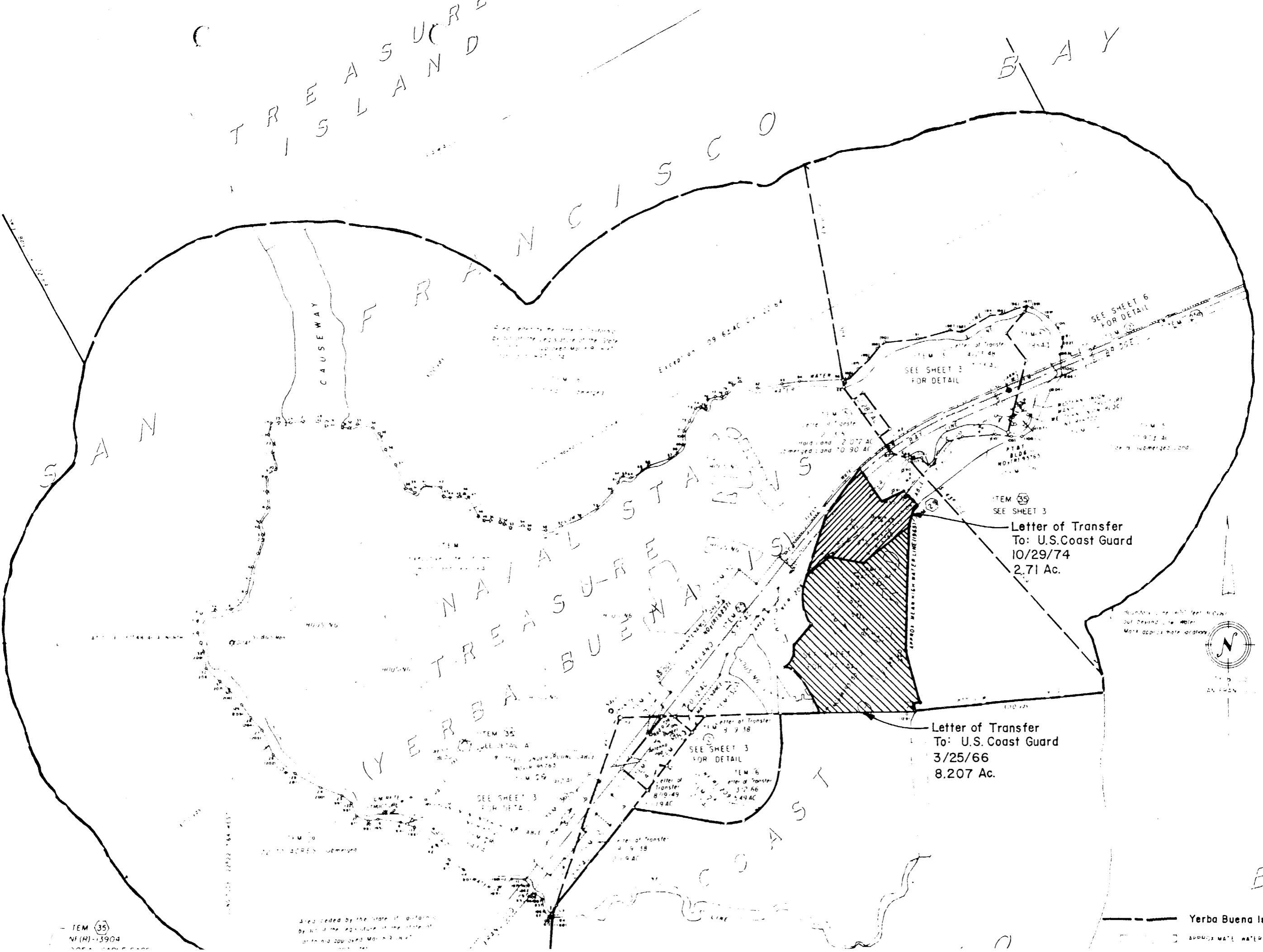
AUDITED

INSTALLATION OR PROJECT NO. 403
SHEET 1 OF 1
DRAWING NO. FB-312

SCALE IN INCHES
0 50 100

ENG. FORM 1054 (REV. 2-54)
GPO: 1954 O-547-121
SAN FRANCISCO, CALIF.

Disposed of



TO POINT FROM U.S.C.G.S. MON.

1	1
2	2
3	3
4	4
5	5
6	6
7	7
8	8
9	9
10	10
11	11
12	12
13	13
14	14
15	15
16	16
17	17
18	18
19	19
20	20
21	21
22	22
23	23
24	24
25	25
26	26
27	27
28	28
29	29
30	30
31	31
32	32
33	33
34	34
35	35
36	36
37	37
38	38
39	39
40	40
41	41
42	42
43	43
44	44
45	45
46	46
47	47
48	48
49	49
50	50
51	51
52	52
53	53
54	54
55	55
56	56
57	57
58	58
59	59
60	60
61	61
62	62
63	63
64	64
65	65
66	66
67	67
68	68
69	69
70	70
71	71
72	72
73	73
74	74
75	75
76	76
77	77
78	78
79	79
80	80
81	81
82	82
83	83
84	84
85	85
86	86
87	87
88	88
89	89
90	90
91	91
92	92
93	93
94	94
95	95
96	96
97	97
98	98
99	99
100	100

TEM (35)
NF(R)-3904

Area ceded by the State of California by Act of the Legislature of the State of California, Chapter 100, Statutes of California, 1949.

Yerba Buena Island Boundary

APPROXIMATE WATER LINE

Letter of Transfer
To: U.S. Coast Guard
10/29/74
2.71 Ac.

Letter of Transfer
To: U.S. Coast Guard
3/25/66
8.207 Ac.



Boundary line will be marked out beyond the water. Mark approximate water line.