

**TRACT REGISTER OF ACQUISITION AFTER JULY 1940**

TRACT NO.	LAND OWNER	A C R E A G E		REMARKS
			TRANS.	
A	Department of Agriculture, Forest Service.		4.44	Special Use Permit 113-1404, dated 6-2-58.

**PROJECT MAP**

AGENCY: DEPT. OF THE AIR FORCE  
 STATE: CALIFORNIA  
 COUNTY: SISKIYOU  
 DIVISION: SOUTH PACIFIC  
 DISTRICT: SACRAMENTO  
 ARMY AREA: 6TH

**LOCATION OF PROJECT**

7 MILES W OF YREKA  
 MILES OF

**TRANSPORTATION FACILITIES**

RAILROADS  
 STATE ROADS  
 FEDERAL ROADS 99  
 AIR LINES

**ACQUISITION**

TOTAL ACRES ACQUIRED 4.44  
 ACRES FEE  
 ACRES TRANSFERRED  
 ACRES LEASED  
 ACRES LESSER INTERESTS  
 USE PERMIT 4.44

**DISPOSAL**

TOTAL ACRES DISPOSED OF 4.44  
 ACRES SOLD  
 ACRES TRANSFERRED  
 ACRES LEASES TERMINATED  
 USE PERMIT 4.44  
 ACRES LESS. INT'S. TERMINATED  
 ACRES REASSIGNED

**LEGEND**

EXCEPT FOR THE SPECIAL SYMBOLS SHOWN BELOW, MAP SYMBOLS ARE STANDARD IN ARMY MAP SERVICE TECHNICAL MANUAL NO. 23.

RESERVATION LINE

RESERVATION LINE (Actual Survey)

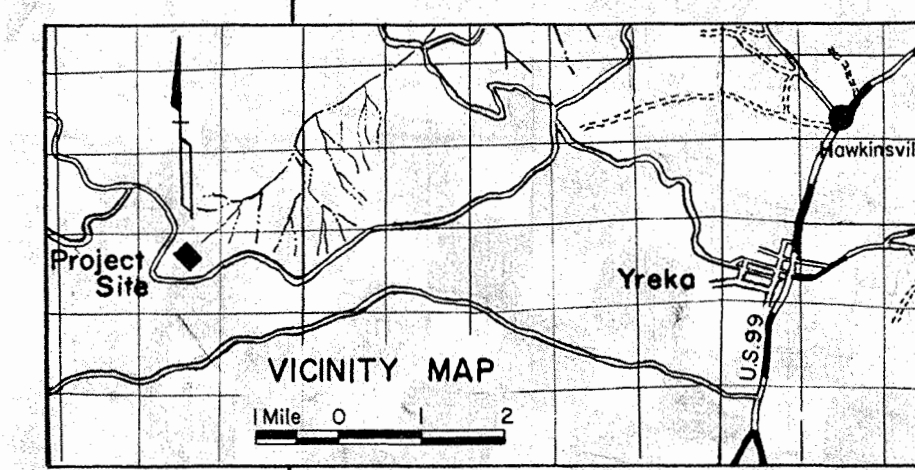
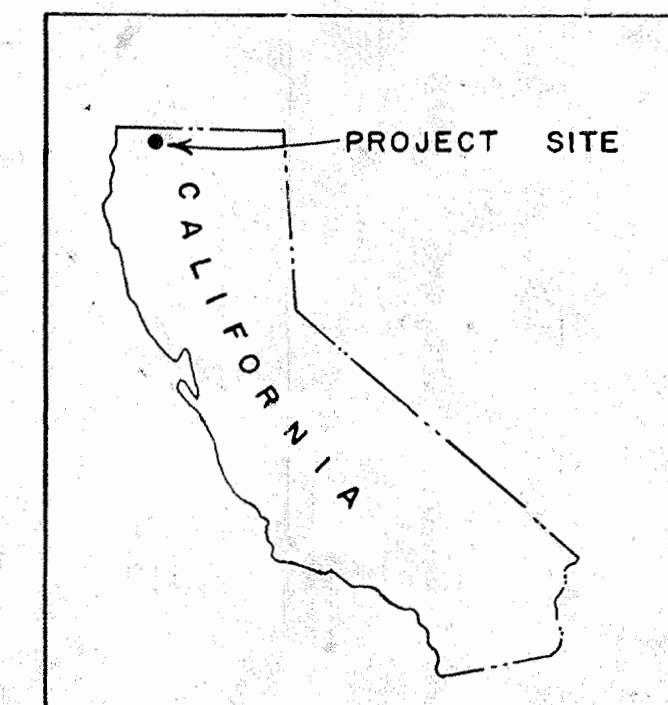
TRACT BOUNDARY LINE

TRACT NUMBER

AVIGATION EASEMENT

CONTOUR LINE

DISPOSAL



**ACQUISITION AUTHORIZATION**  
 RE-D 6790 dated 28 November 1956

**SEGMENT "I"**

**DEPARTMENT OF THE ARMY**  
 OFFICE OF THE SACRAMENTO DISTRICT ENGINEER  
**SOUTH PACIFIC DIVISION**

**REAL ESTATE**  
**YREKA GAP FILLER**  
**ANNEX. (TM-180A)**  
 MILITARY RESERVATION

DRAWN BY S.L.  
 TRACED BY  
 CHECKED BY J.O.M.  
 SUBMITTED BY  
 Joseph O. MacIntyre, Jr.  
 CHIEF, CADASTRAL SECTION

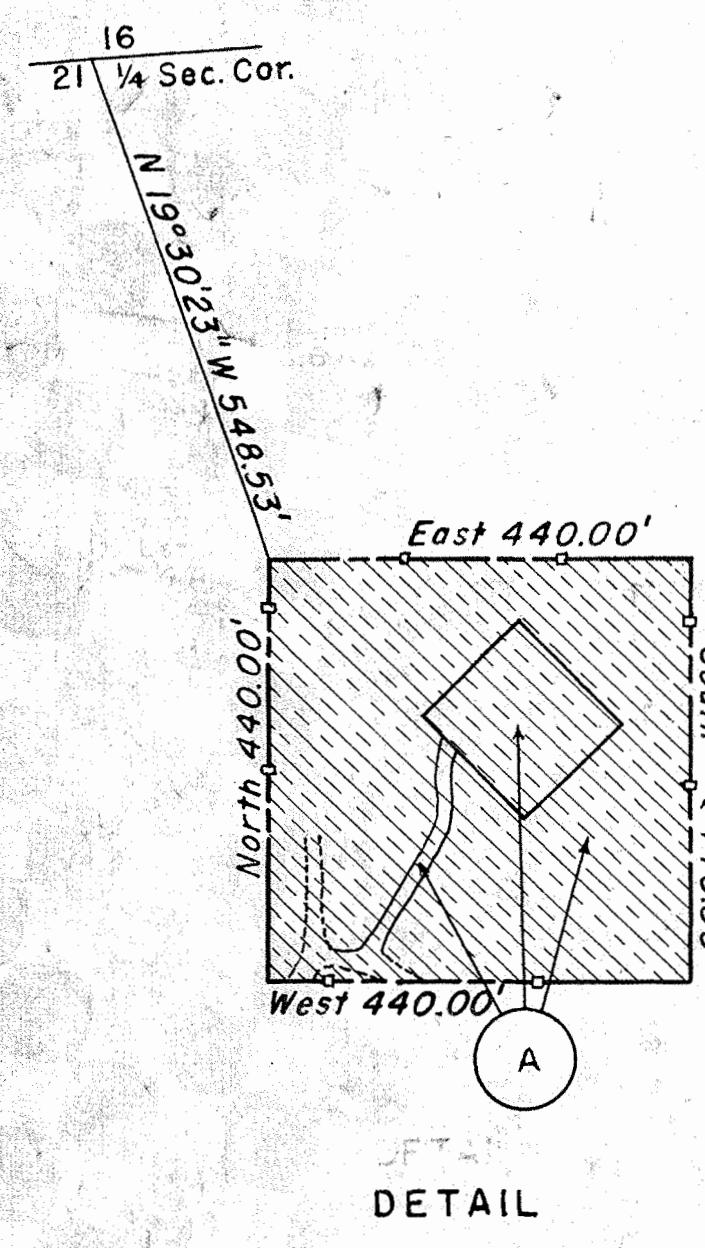
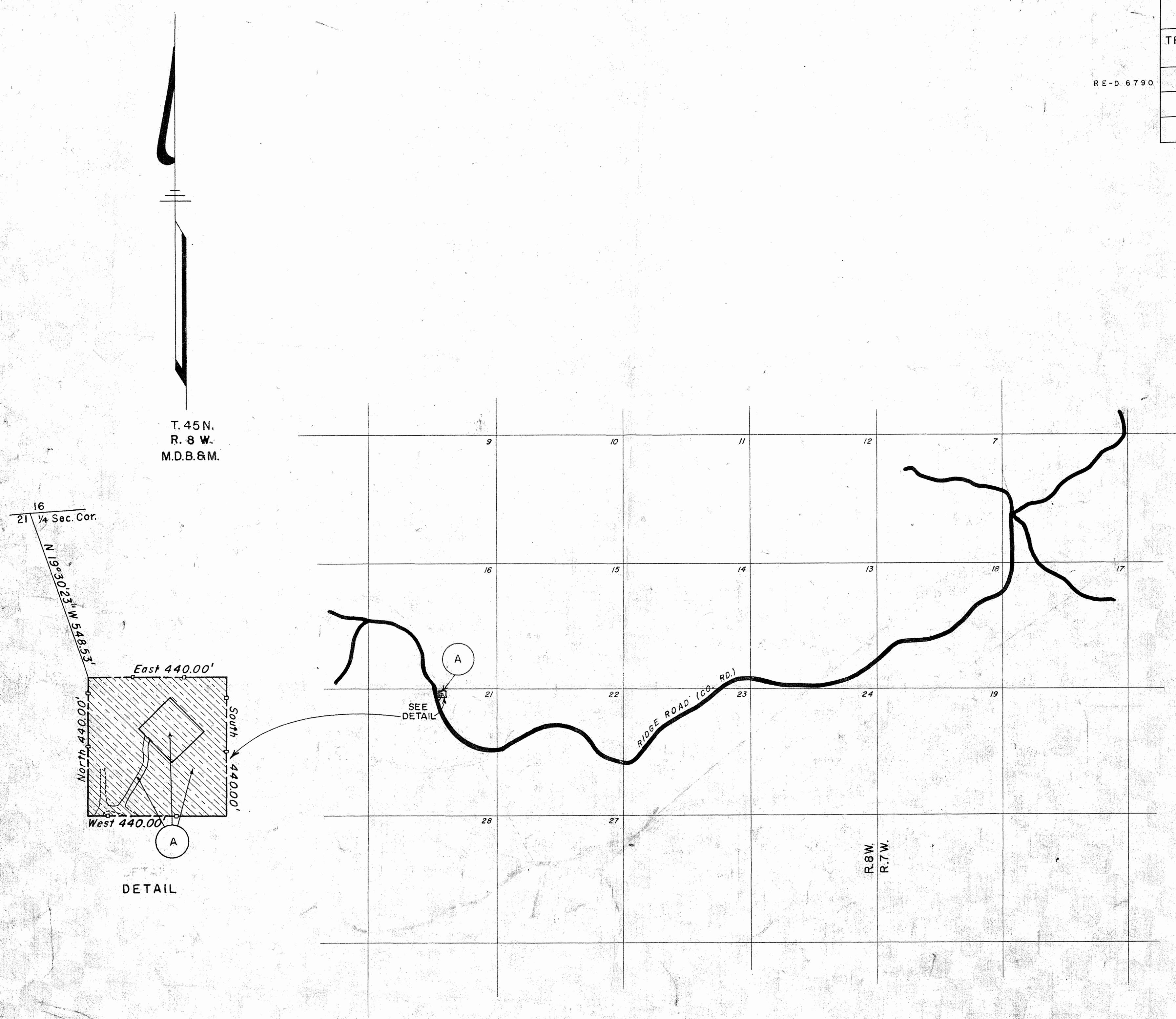
RECOMMENDED BY  
 [Signature]  
 CHIEF, PLANNING AND CONTROL BRANCH

APPROVED BY  
 [Signature]  
 CHIEF, REAL ESTATE DIVISION

DATE 26 Sept 1957

**AUDITED** 3949

Scale 0 1 Mile  
 SHEET 1 OF 1 FILE NO. 160-12-4 DR NO. 15-02-88 FB 393



Note:  
 The boundary of this installation was compiled from actual survey and deed descriptions.

4.44 AC. BY SPECIAL USE PERMIT 113-1404 RETRANSFERRED TO DEPARTMENT OF AGRICULTURE, FOREST SERVICE ON 1 JUL 61.

DATE	REVISIONS	BY
11-8-61	Disposal data added	D.A.B.
6-1-61	Jurisdiction Transferred from San Francisco District	J.O.M.
9-22-58	Due to final audit.	S.L.
11-8-57	Map revised to show Jurisdiction Transferred to San Francisco District Engineers	M.C.