



**US Army Corps
of Engineers**
Rock Island District

DEFENSE ENVIRONMENTAL RESTORATION PROGRAM
FOR
FORMERLY USED DEFENSE SITES
ORDNANCE AND EXPLOSIVES



ARCHIVES SEARCH REPORT

FINDINGS
FOR THE FORMER

VICTORVILLE PBR # 13

LUCERNE VALLEY, CALIFORNIA

OE PROJECT NUMBER J09CA067901

SEPTEMBER 1996



DEFENSE ENVIRONMENTAL RESTORATION PROGRAM
for
FORMERLY USED DEFENSE SITES

FINDINGS

ORDNANCE AND EXPLOSIVES
ARCHIVES SEARCH REPORT
FOR
FORMER VICTORVILLE PBR # 13
LUCERNE VALLEY, SAN BERNARDINO COUNTY, CALIFORNIA
OE PROJECT NUMBER J09CA067901

September 1996

Prepared For
U.S. Army Engineering and Support Center,
Huntsville
P. O. Box 1600
ATTN: CEHNC-OE
Huntsville, Alabama 35807-4301

Prepared by
U.S. Army Corps of Engineers
Rock Island District
P. O. Box 2004
ATTN: CENCR-ED-DO
Rock Island, Illinois 61204-2004

and

U.S. Army Defense Ammunition
Center and School
ATTN: SIOAC-ESL
Savanna, Illinois 61074-9639

ORDNANCE AND EXPLOSIVES
 ARCHIVES SEARCH REPORT
 FOR
 FORMER VICTORVILLE PBR # 13
 SAN BERNARDINO COUNTY
 LUCERNE VALLEY, CALIFORNIA
 OE PROJECT NUMBER J09CA067901

ACKNOWLEDGEMENT				
The following persons provided support as indicated:				
Function	Name	Title	Organization	Telephone
On-Site Assessment	*William Akins	Q.A. Spec., Ammunition (QASAS)	SIOAC-ESL	(815) 273-8538
	Charles Holcombe	QASAS/ UXO Spec.	CENCR-ED-DO	(309) 794-6009
Engineering Support	Daniel Holmes	Professional Engineer	CENCR-ED-DO	(309) 794-6080
Historical Research	Shirley Daniels	Tech. Info Mgt. Spec.	SIOAC-ESL	(815) 273-8716
Geographic District	Greg Boghossian	Project Manager	CESPL-ED-MI	(213) 452-3722
Industrial Hygiene	Robert Platt	Industrial Hygienist	MCXP-RIA	(309) 782-0806
CADD	Jeff McCrery	Technician	CENCR-ED-DO	(309) 794-6074
*Team Leader				

ORDNANCE AND EXPLOSIVES
ARCHIVES SEARCH REPORT
FOR
FORMER VICTORVILLE PBR # 13
SAN BERNARDINO COUNTY
LUCERNE VALLEY, CALIFORNIA
OE PROJECT NUMBER J09CA067901

FINDINGS

TABLE OF CONTENTS

Section	Page
1. INTRODUCTION.....	1
a. Subject and Purpose	
b. Scope	
2. PREVIOUS INVESTIGATIONS.....	2
a. 1994 Preliminary Assessment	
b. Other Investigations	
3. SITE DESCRIPTION.....	3
a. Existing Land Usage	
b. Climatic Data	
c. Topography	
d. Geology and Soils	
e. Hydrology	
f. Natural Resources	
g. Historical/Cultural Resources	
4. HISTORICAL ORDNANCE PRESENCE.....	4
a. Chronological Site Summary	
b. Ordnance-Related Records Review	
c. Interviews with Site-Related Personnel	
5. SITE ELIGIBILITY.....	7
a. Confirmed Formerly Used Defense Site	
b. Potential Formerly Used Defense Site	

6.	VISUAL SITE INSPECTION.....	7
	a. General Procedures and Safety	
	b. Area A: Bomb Target	
	c. Area B: Target Buffer Zone	
	d. Area C: Remaining Land	
7.	EVALUATION OF ORDNANCE PRESENCE.....	10
	a. General Procedures	
	b. Area A: Bomb Target	
	c. Area B: Target Buffer Zone	
	d. Area C: Remaining Land	
8.	SITE ORDNANCE TECHNICAL DATA.....	10
	a. End Item Technical Data	
	b. Chemical Data of Ordnance Fillers	
9.	OTHER ENVIRONMENTAL HAZARDS.....	10
	a. Hazardous, Toxic, and Radiological Waste (HTRW)	
	b. Building Demolition/Debris Removal (BD/DR)	

APPENDICES

A.	REFERENCE SOURCES
B.	REFERENCES AND ABSTRACTS
C.	GLOSSARY
D.	TEXTS/MANUALS
E.	REPORTS/STUDIES
F.	LETTERS/MEMORANDUMS/MISCELLANEOUS ITEMS
G.	REAL ESTATE DOCUMENTS
H.	NEWSPAPERS/JOURNALS
I.	INTERVIEWS
J.	PRESENT SITE PHOTOGRAPHS
K.	HISTORICAL PHOTOGRAPHS
L.	REFERENCE MAPS/DRAWINGS
M.	ARCHIVES SEARCH REPORT CORRESPONDENCE
N.	REPORT DISTRIBUTION LIST

TABLES

- 2-1 DERP-FUDS PRELIMINARY ASSESSMENT PROJECTS
- 3-1 CURRENT LAND USAGE
- 3-2 NATURAL AND CULTURAL RESOURCES
- 8-1 AMMUNITION USED AND EXPLOSIVE/CHEMICAL FILLERS
- 8-2 CHEMICAL DATA OF ORDNANCE FILLERS

REPORT PLATES

- 1. SITE MAP
- 2. FACILITY LAYOUT (CIRCA 1942)
- 3. PROJECT AREAS
- 4. CURRENT OWNERSHIP
- 5. PHOTO LOCATIONS

ORDNANCE AND EXPLOSIVES
ARCHIVES SEARCH REPORT
FOR
FORMER VICTORVILLE PBR # 13
SAN BERNARDINO COUNTY
LUCERNE VALLEY, CALIFORNIA
OE PROJECT NUMBER J09CA067901

1. INTRODUCTION

a. **Subject and Purpose**

(1) This report presents the findings of an historical records search and site inspection for present-day ordnance and explosives (OE) presence at the former Victorville Precision Bombing Range (PBR) # 13, Lucerne Valley, California (see plate 1 for general location map). The OE investigation was conducted under the authority of the Defense Environmental Restoration Program for Formerly Used Defense Sites (DERP FUDS).

(2) The investigation focused on the center 20 acres of the 640-acre PBR site, since this was the location of the actual asphalt target and would be the most probable location of present-day OE.

(3) The purpose of this investigation was to characterize the site for potential present-day OE contamination, to include conventional ammunition and chemical warfare material (CWM). The investigation was conducted by experienced ordnance experts through thorough evaluation of historical records, interviews, and on-site visual inspection results.

b. **Scope**

(1) This report presents the site history, site description, real estate ownership information, and confirmed ordnance presence (prior to and after site closure), based on available records, interviews, site inspections, and analysis. The analysis provides a complete evaluation of all information to assess present-day potential ordnance contamination, where actual ordnance presence has not been confirmed.

(2) For the purpose of this report, OE contamination consists of live ammunition, live ammunition components, CWM or explosives which have been lost, abandoned, discarded, buried, fired, or thrown from demolition pits or burning pads. These items were either manufactured, purchased, stored, used, and/or disposed of by the War Department (WD)/Department of Defense (DOD). Such ammunition and

components are no longer under accountable record control of any DOD organization or activity.

(3) OE includes "explosive soil", which refers to any mixture in soil, sands, clays, etc., such that the mixture itself is explosive. Generally, 10 percent or more by weight of secondary explosives in a soil mixture is considered explosive soil. Expended small arms ammunition (.50 caliber or smaller) is not considered OE contamination.

2. PREVIOUS INVESTIGATIONS

a. 1994 Preliminary Assessment

(1) A 1994 assessment of the 640-acre FUDS was performed by a team from Earth Technology Corporation, under the direction of the U.S. Army Corps of Engineers (USACE), Los Angeles District (see document at E-2). A 28 April 1994 Findings and Determination of Eligibility (FDE) has been signed, showing the site (J09CA067900) had been formerly used by the War Department/Department of Defense (WD/DOD) and one OE project was eligible under the DERP FUDS for further assessment (see document at E-1).

(2) In the accompanying 23 June 1994 Project Survey Summary Sheet (OE Project J09CA067901), the OE project was referred to the Corps' Mandatory Center of Expertise (MCX), Huntsville (see document E-3). The recommendation of the 1994 assessment is summarized in Table 2-1.

TABLE 2-1 DERP-FUDS PRELIMINARY ASSESSMENT PROJECTS				
Project Number	DERP Category	Present Phase	Comments	Location
J09CA067901	OE	SI	Assess for present-day OE contamination	Entire site
None	HTRW	--	None recommended	
None	BD/DR	--	None recommended	

b. Other Investigations

No other investigations were uncovered during this assessment.

3. SITE DESCRIPTION

a. **Existing Land Usage**

(1) Today, most of the 640 acres are controlled by the U.S. Department of the Interior, Bureau of Land Management (BLM). There are a number of small tracts on the FUDS which are owned by private individuals (see documents G-1, G-2 and plate 4).

(2) During the 1996 OE site inspection, visible evidence remained of the weathered asphalt bomb target rings, as was mentioned in the 1994 preliminary assessment (see document E-1). Aside from the few widely-dispersed occupied dwellings present on the site, there is little to suggest present day human use of the site on a regular basis. Table 3-1 depicts the current use.

TABLE 3-1 CURRENT LAND USAGE					
AREA	FORMER USAGE	PRESENT OWNER	PRESENT USAGE	ACREAGE	COMMENTS
A	Bomb Target	Various	Undeveloped desert land	20.00	See plate 3
B	Target Buffer	Various	Undeveloped desert land	150.00	See plate 3
C	Remaining Land	Various	Undeveloped desert & a few dwellings	470.00	See plate 3
				640.00	TOTAL

b. **Climatic Data**

(1) The information in section 3, paragraphs b.(2) through g. was obtained primarily from reference B-7 and B-15.

(2) The overall climate in this portion of San Bernardino County is warm and semi-arid to arid. There is one wet season during the year, as 90 percent of all precipitation falls from October through April. Summers are cloudless, hot, and dry. Winters are mild and semi-arid to arid.

c. Topography

The former PBR #13 is situated in the Mojave Valley. The land is relatively flat, with an average elevation of 1,850 feet above sea level.

d. Geology and Soils

The surface material is undifferentiated Holocene alluvium. The predominant soil on the site is Cajon sand, a very deep, somewhat excessively drained soil. Permeability is rapid and water capacity is low. Runoff is slow and water erosion is slight.

e. Hydrology

Due to the dry climate and rapid permeability of the soil, there are no streams on the site. No dry streams or gullies or rills were noted during the site inspection. The Mojave River has only 3 major tributaries with the desert--the Fremont Wash, Buckthorn Canyon, and Oro Grande Wash. These tributaries flow only after intense storms.

f. Natural Resources

The desert tortoise, a federally-listed endangered species, is likely to be present within the site (see document F-1). No other threatened or endangered species have been specifically cited within the site.

g. Historical/Cultural Resources

There are no historical or archeological sites specifically designated by the California State Historical Preservation Office (SHPO) for this site (see map at G-3). However, SHPO recommends that if historical artifacts over 50 years in age are encountered during land modification, an on-site inspection should be performed immediately by a qualified archaeologist (reference B-15).

**TABLE 3-2
NATURAL AND CULTURAL RESOURCES**

Resource Classification	Type	Comment
Wildlife	Desert Tortoise	Endangered
Vegetation		None identified
Historical/Cultural	None identified	Coordinate with SHPO

4. HISTORICAL ORDNANCE PRESENCE

a. **Chronological Site Summary**

(1) In May 1943, 640 acres were transferred from the U.S. Department of the Interior to the War Department through Public Land Order 125. Victorville PBR Number 13 was only one of approximately twenty bombing ranges in the immediate vicinity of Victorville, California. These bombing ranges were constructed and used by the Army Air Forces based at Victorville Airfield (aka Victorville Army Flying School) as practice bombing areas in the training of aircraft crews (see document at E-3). No buildings or towers were constructed on the Victorville PBR #13 site (see document at E-1). A thorough review of historical information related to this FUDS failed to reveal the direction of flight of the aircraft used at this precision bombing range.

(2) Improvements on site consisted of frame butts and appurtenances, fences and gates, and a bombing target (see document at E-1). The bombing target consisted of asphalt strips approximately 5 feet wide configured as three concentric circles, with two strips of asphalt transecting the concentric circles (see document at E-1).

(3) The FUDS was informally returned to the U.S. Department of the Interior in November 1948 by a Letter of Transfer, which also declared the bomb target as deduded and free and clear of explosives or explosive objects (see document at F-2). The transfer from DOD to the Department of the Interior became official in March 1954.

(4) Currently, most of the site is controlled by the U.S. Department of the Interior, Bureau of Land Management (see plate 4). Additionally, private landowners possess approximately 70 parcels (see document G-2 and plate 4). There are no DOD improvements existing on the site. A few occupied civilian dwellings are present on the site.

b. **Ordnance-Related Records Review**

(1) Research efforts began with a review of all reports, articles, historical documents, and reference materials gathered during the archival records search. During this review, an effort was made to focus on those land areas having the highest potential for present-day OE contamination, as described in the OE project summary sheet, as well as any additional areas which may have been identified during research.

(2) A collection of documents, including drawings, maps, correspondence, reports, and various other records appropriate to the former PBR #13 was reviewed by the site inspection (SI) team.

(3) Specific information on the exact munitions used at PBR # 13 was not located by either the archival records search team or the SI team. However, two 1948 letters were located by the archival records search team, showing deduinding of this and ten other surrounding ranges of the Victorville Bombing Ranges (see documents F-2 and F-3). Approximately 840 total tons of scrap metal was disposed of in the eleven ranges numbered 3, 7, 10, 11, 12, 13, 14, 16, 17, 19 and 20 which were all part of the Victorville Bombing Ranges (aka Victorville Army Flying School). No information could be obtained, however, on specific items or quantities disposed of at PBR #13, the subject PBR of this report.

(4) General historical documents pertaining to the Victorville Army Flying School were reviewed to ascertain whether information relating specifically to the subject PBR #13 FUDS could be gleaned. Although information on storage structures, troop barracks, etc., was obtained which related to the Victorville Base itself, nothing specifically relating to the outlying PBR # 13 was located. The SI team attempted to locate, through interviews and historical records searches, the specific aircraft types used specifically at PBR #13. No specific information could be located on this subject.

(5) Correspondence relating to land purchases for the bombing ranges supporting the Air Corps Flying School, Victorville, was reviewed. Nothing in this correspondence specifically addressed the FUDS, known as PBR # 13.

(6) The SI team reviewed the historical records information for mention of EOD actions related to the subject FUDS. The SI team found nothing other than the 1948 letters mentioned earlier in this report (see documents at F-2 and F-3). The SI team visited the local, supporting EOD unit at Fort Irwin for information on responses over the years to PBR # 13. The EOD unit at Fort Irwin could not provide proof of any responses to this FUDS (see interview at I-1).

(7) Sources checked in the search for any mention of specific bombing aircraft, assigned units, and/or the specific type(s) of munitions used at the the specific bomb target #13, included:

National Archives	Regional Archives
Local Highway Patrol Office	Local Police Department
County Court House	State and Local Libraries
Sheriff's Department	Bureau of Land Management

c. Interviews with Site-Related Personnel

(1) SFC Dennis White, 259th Ordnance Detachment (EOD), Fort Irwin, was contacted at his office. SFC White reiterated information he had already given Mrs. Shirley Daniels, USATCES, about there having been no responses to this FUDS by his unit (see interview at I-1).

(2) The California Highway Patrol, Victorville, was visited. The desk sergeant stated to the SI team that his unit has never responded to any OE discoveries at this FUDS (see interview at I-2).

(3) The Sheriff's Office, Victorville, was contacted. A deputy stated that his office has never responded to any OE discoveries at the FUDS (see interview at I-3).

(4) Mr. Edward Laska was interviewed by a member of the SI team. Although Mr. Laska was aware of the site, he had no specific information related to present-day OE presence (see interview at I-4).

(5) Mr. Wayne Fowlie was interviewed by a member of the SI team. Although Mr. Fowlie was aware of the site, he had no specific information related to present-day OE presence (see interview at I-5).

5. SITE ELIGIBILITY

a. Confirmed Formerly Used Defense Site

Former land usage and legal possession by the War Department/DOD was confirmed for the entire 640-acre site, as summarized in section 4.a. of this report. There were no recapture or restrictive use documents for this site discovered during the historical research phase or during the SI inspection phase.

b. Potential Formerly Used Defense Sites

No additional acreage for this FUDS was located and no other previously unknown sites were discovered during this site visit.

6. VISUAL SITE INSPECTION

a. General Procedures and Safety

(1) During the period 16 April through 19 April 1996, members of the SI team performed an OE assessment of the former PBR # 13, Lucerne Valley, California. The primary task of the team was to assess the site for present-day OE contamination, as a result of its former War Department/DOD use. The inspection was limited to

nonintrusive methods; i.e., subsurface sampling was neither authorized nor performed.

(2) A site safety and health plan (SSHP) was developed and utilized by the assessment team to assure safety from injury during the site inspection (reference B-3). Prior to the inspection, a briefing was conducted which stressed that OE should be handled by military EOD personnel only.

(3) Prior to the site visit, a thorough review of all available reports, historical documents, texts, and technical ordnance reference materials gathered during the historical records search was made to ensure awareness of potential ordnance types and associated hazards.

b. Area A: Bomb Target

(1) This 20-acre area near the center of the 640-acre FUDS was the site of three concentric asphalt circles, which denoted the target for which the pilots would aim when dropping their practice bombs (see document at E-1 and plates 2 and 3). The asphalt circles were still faintly visible at the time of the INPR.

(2) The OE SI team walked to the general center of the site and found traces of the asphalt circles (see photograph J-1). Additionally, scores of spotting charge remnants associated with the M38A2 100 lb., sand-filled practice bomb were discovered scattered throughout Area A (see photographs J-3, J-5, and J-6).

c. Area B: Target Buffer Zone

The two SI team members and the escort from the Bureau of Land Management walked through Area B and found OE, consisting of remnants of spotting charges (see photograph J-4). Many spotting charge remnants not photographed were also found.

d. Area C: Remaining Land

The SI team and the escort ranger from the Bureau of Land Management walked over some of Area C and drove over other parts of Area C without any additional OE discoveries. The SI team and escort dismounted from the vehicle many times during the survey of Area C and performed a ground search of the immediate area, looking for OE. No OE was discovered on any portion of Area C by the SI team. Area C is the location of the few scattered occupied dwellings on the FUDS (see photograph at J-8).

7. EVALUATION OF ORDNANCE PRESENCE

a. General Procedures

(1) Each area (subsite) was evaluated to determine confirmed OE contamination, potential OE contamination, or a lack of OE contamination since site closure. Confirmed OE contamination is based on verifiable historical evidence or direct witness of OE. Verifiable historical record evidence consists of OE located on site since site closure and documented by local bomb squads, military EOD teams, newspaper articles, correspondence, and current findings. Direct witness of OE consists of the site inspection team directly locating OE by visual inspection. Additional field data is not needed to identify a confirmed OE-contaminated area (subsite).

(2) Potential OE contamination is based on a lack of confirmed OE presence since site closure. Potential OE contamination is inferred from records, on-site observations, and interviews. Inference from historical records would include common practice in production, storage, training, or disposal at that time, which could have allowed present-day OE contamination. Potential OE contamination could also be inferred from indirect witness (hearsay), and from present-day site features. Corroborative data is needed to verify that an area has potential OE contamination.

(3) Uncontaminated OE areas are based on a lack of confirmed or potential OE presence. Historical records and present-day site inspections do not indicate confirmed or potential OE contamination. There is no reasonable evidence, either direct or inferred, to suggest present-day confirmed or potential OE contamination. Additional field data is not needed to assess uncontaminated ordnance areas.

b. Area A: Bomb Target

(1) **Area A is considered contaminated.** The SI team members and the BLM escort walked much of Area A, locating traces of the asphalt target rings and many remnants of the spotting charges associated with the M38A2 practice bomb. Due to the quantity of spotting charge remnants found on the surface, it is possible that subsurface OE contamination consisting of the M38A2 practice, sand-filled bomb and the accompanying spotting charge will also be discovered.

(2) The Earth Technology team which performed the 1994 INPR had no mention in their report of there being any present day OE at the FUDS. The company did state that, although the site was dedudded and certified free of OE, no subsurface clearance was ever performed. Accompanying the 1994 INPR from Earth Technology Company was a 1993 Risk Assessment document, prepared by Captain Maruya and Kevin

McLinchey. The 1993 document states "there was no visual evidence of OEW or HTRW or DOD related items."

c. Area B: Target Buffer Zone

(1) **Area B is considered contaminated.** During the ground search of most of this area by the SI team and the escort from the Bureau of Land Management, some spotting charge remnants were discovered.

(2) It is possible that the same type of munitions item discovered by the SI team on the surface in Areas A and B are also present in the subsurface of Area B. It is also possible that some M38A2 practice, sand-filled bomb parts will be discovered in the subsurface of Area B. The SI team has included enough buffer zone land around the target area of the FUDS to ensure that the Area B land includes all land used as the outlying buffer zone of the bombing range target zone (see plate 3).

d. Area C: Remaining Land

(1) **Area C is considered uncontaminated.** During the ground search and the vehicle search of this area, no munitions-related items were discovered by the team.

(2) The search team consisted of the SI team and the escort from the Bureau of Land Management. The search team split up and walked much of Area C, with each person searching for any OE on the surface. The search team also drove to outlying portions of Area C, dismounting the vehicle, and individually searching on foot portions of Area C for hundreds of yards around the vehicle. During these exercises, no OE was discovered by the SI team or the escort.

(2) During the search of Area C it was observed that there was no evidence of extensive usage of Area C by off-road vehicles. Such recreational usage would suggest the removal or disturbance of munitions-related remnants over the years. No such off-road activity was evident during the SI search of Area C or Areas A and B.

(3) No evidence was uncovered to suggest that any part of Area C ever had a munitions-related mission. The practice bombing mission of PBR #13 was limited to Areas A (the bomb target) and B (the buffer zone).

8. SITE ORDNANCE TECHNICAL DATA

a. End Item Technical Data

Table 8-1 has been developed, showing the likely ordnance item used on the practice bomb target range and its explosive/chemical filler(s).

TABLE 8-1 AMMUNITION USED AND EXPLOSIVE/CHEMICAL FILLERS			
Item	Model/Type	Filler/Weight	Fuze Type
Bomb, Practice 100 lb. w/spotting charge	M38A2	Sand (inert) 100 lbs. 3 lb. black powder	--

b. Chemical Data of Ordnance Fillers

Table 8-2 defines the chemical compounds of the item listed in Table 8-1.

TABLE 8-2 CHEMICAL DATA OF ORDNANCE FILLERS		
Explosive Material	Synonym	Chemical Compound
Black Powder		
74% Potassium Nitrate	Salt Peter; Niter	KNO ₃
11% Sulfur	-	S
16% Charcoal	-	C

9. OTHER ENVIRONMENTAL HAZARDS

a. Hazardous, Toxic, and Radiological Waste (HTRW)

There are no HTRW hazards known to exist on this FUDS.

b. Building Demolition/Debris Removal (BD/DR)

During the period that Victorville Precision Bombing Range # 13 was under WD/DOD control, improvements consisted of frame butts and appurtenances, fences, gates, and the asphalt target rings. Except for the faint traces of the asphalt target rings, none of these improvements now exist.

ORDNANCE AND EXPLOSIVES
ARCHIVES SEARCH REPORT
FOR
VICTORVILLE PBR # 13
SAN BERNARDINO COUNTY, CALIFORNIA
PROJECT NUMBER J09CA067901

APPENDIX A

REFERENCE SOURCES

Reference Sources

The following organizations/personnel are acknowledged for their support

Organizations	Name	Telephone	Nature of Support
GOVERNMENT SOURCES			
FEDERAL AGENCIES			
<u>Department of Defense</u>			
Historical Accident Data Base 2461 Eisenhower Avenue Alexandria, VA 22331-0600	Computer Search (DDESB)	(703) 325-8624	No information found on this site.
Defense Library On Disk Pentagon Library, Room 1A518 Washington, DC 20301-6000	Computer Search (DLOD)	(703) 697-4658	No information found on this site.
Defense Logistics Studies Information Exchange U.S. Army Logistics Management College Fort Lee, VA 23801	Computer Search (DLSIE)	(804) 734-4007	No information found on this site.
Defense Technical Info Center Cameron Station Alexandria, VA 22304-6145	Computer Search (DTIC)	(202) 274-7633 (312) 922-6571	No information found on this site.
Defense Mapping Agency ATTN: PMSC 6001 McArthur Blvd Bethesda, MD 20816	James Ferguson	(301) 227-2495 DSN 287-2495	Source of topographical and aeronautical charts.
<u>Department of Defense</u>			
Army			
Army Safety Management Information System Fort Rucker, AL 36322	Computer Search (ASMIS)	(205) 255-6485	No information found on this site.

**Reference Sources
(continued)**

Organizations	Name	Telephone	Nature of Support
GOVERNMENT SOURCES			
Department of Defense (continued)			
Army (continued)			
Aberdeen Proving Ground Ordnance Museum Aberdeen Proving Ground, MD 21005	Roger Godin	DSN 298-3602	Source of old Army ordnance and Navy publications.
Center of Military History ATTN: DAMH-RAS 1099 14th Street NW Washington, DC 20536	Contractor	(202) 761-5416	See Appendix B, Section II, Parts A and B.
Office of History ATTN: AMSIO-EAH Rock Island Arsenal Rock Island, IL 61299-5000	Tom Slattery	(309) 794-1450	No information found on this site.
Rock Island Arsenal Museum Rock Island, IL 61299-6000	Kris Gayman Leinicke	(309) 794-5021 DSN 793-5021	Technical information furnished for USATCES reference area.
U.S. Marine Corps EOD Unit, MCAGCC 29 Palms, CA 92272	Sgt. Meyer	(619) 830-7215	No information found on this site.
U.S. Army Chemical & Biological Defense Command Historical Division Aberdeen Proving Ground, MD 21010	Kathleen Ciolfi	(410) 671-4430	Chemical information database furnished.
U.S. Army Chemical Corps Museum ATTN: ATZN-CM-MM Bldg 2299 Fort McClellan, AL 35205	Sgt Maj Murray	(205) 848-6555	Reference source only. Nothing found on this site.

Reference Sources

(continued)

Organizations	Name	Telephone	Nature of Support
GOVERNMENT SOURCES			
<u>Department of Defense (continued)</u>			
<u>Army (continued)</u>			
U.S. Army Chemical School Fisher Library, Building 1081 Fort McClellan, AL 36205-5000	Dick Pastorett	(205) 848-4414 DSN 854-4414	Many documents are available that apply to chemical, biological and nuclear subjects if needed.
U.S. Army Technical Center for Explosives Safety ATTN: SIOAC-ESL Savanna, IL 61074-9639	Reference Center	(815) 273-8749	Excerpts from airport directory, U.S. Military History Institute, Carlisle Barracks.
U.S. Army Technical Center for Explosives Safety ATTN: SIOAC-ESM Savanna, IL 61074-9639	Technical Library	(815) 273-8771	Technical reference sources.
U.S. Army, 259th Ordnance Disposal Unit Fort Irwin Barstow, CA 92301-5051	SGT 1st Class Marshall White	(619) 380-4092	(See interview at I-1).
U.S. Army 70th Explosive Ordnance Disposal Unit P.O. Box 6376 San Diego, CA 92166	Sgt. McFarlen	(619) 553-8500 DSN 553-8500	Not responsible for this area of California.
U.S. Military History Institute Photo Archives Carlisle Barracks Carlisle, PA 17013	Mike Winey	(717) 245-3434 DSN 242-3434	No information on this site.

**Reference Sources
(continued)**

Organizations	Name	Telephone	Nature of Support
---------------	------	-----------	-------------------

GOVERNMENT SOURCES

Department of Defense (continued)

Army (continued)

U.S. Military History Institute Textual Archives Carlisle Barracks Carlisle, PA 17013	Richard Sommers	(717) 245-3601 DSN 242-3601	No information on this site.
U.S. Military History Institute Carlisle Barracks, Bldg 22 Carlisle, PA 17013-5003	Dennis Vetock John Slonaker	(717) 245-3611 DSN 242-3611	Miscellaneous information.
USACE, Los Angeles District 300 N. Los Angeles St., Room 6003 Los Angeles, CA 90024	Deborah Castens	(213) 894-2865	Obtained copies of documents.
USACE, Los Angeles District 300 N. Los Angeles St., Room 6003 Los Angeles, CA 90024	Greg Boghossian	(213) 894-3760	Greg is program manager for FUDS/BRAC at this district.
USACE, Los Angeles District 360 East 2d Street Room 501 Los Angeles, CA 90012	Richard Nagle	(213) 894-2951	Real estate maps.
USACE, Los Angeles District Real Estate Div 360 East 2d Street Room 508 Los Angeles, CA 90012	Deloris Henderson	(213) 894-5583	Real estate information.

**Reference Sources
(continued)**

Organizations	Name	Telephone	Nature of Support
---------------	------	-----------	-------------------

GOVERNMENT SOURCES

Department of Defense (continued)

Army (continued)

USACE Office of History 7701 Telegraph Road Alexandria, VA 22310-3865	Contractor	(703) 355-3558	See Appendix B, Section II, Parts A and B.
---	------------	----------------	---

Department of Defense

Air Force

AFHRA/Air University Library 600 Chennault Circle Maxwell AFB, AL 36112-6424	Leroy Bell	(205) 953-2888 DSN 493-2888	No information found on this site.
--	------------	--------------------------------	---------------------------------------

U.S. Air Force History Research Agency 600 Chennault Drive Maxwell AFB, AL 36112-6424	IRIS System	(205) 953-2439	Reports of histories and George AFB. See Appendix B, Section III, Parts A and B.
--	-------------	----------------	--

U.S. Air Force History Research Agency 600 Chennault Drive Maxwell AFB, AL 36112-6424	CPT. Petters	DSN 493-2437 (205) 953-2437	See Appendix B, Section III, Parts A and B.
--	--------------	--------------------------------	--

U.S. Air Force Museum P.O. BOX 1903 Wright-Patterson AFB, OH 45433	Reference	(513) 555-3286 DSN 785-3286	No information found on this site.
--	-----------	--------------------------------	---------------------------------------

U.S. Air Force, 1st Camera Squadron DET9, 1CTCS/DOV 3720 Fetchet Ave Andrews AFB, MD 20331	James Ferguson	(301) 981-2257	Source of aerial photos.
---	----------------	----------------	--------------------------

**Reference Sources
(continued)**

Organizations	Name	Telephone	Nature of Support
GOVERNMENT SOURCES			
<u>Department of Defense (continued)</u>			
<u>Navy (continued)</u>			
Marine Corps Historical Center Building 58 Washington Navy Yard Washington, DC 20374	Contractor	(202) 433-3483	See Appendix B, Section II, Parts A and B.
Naval Construction Battalion Center 621 Pleasant Valley Road Port Hueneme, CA 93032	Vince Transano	(805) 982-5913	No information found on this site.
Naval Historical Center Building 57 Washington Navy Yard Washington, DC 20374	Contractor	(202) 433-3171	See Appendix B, Section II, Parts A and B.
U.S. Marine Base Explosive Ordnance Disposal Unit Twenty-nine Palms, CA 92272	Sgt. Phillips	(619) 830-7215	Not responsible for this area. Referred us to Fort Irwin.
<u>National Archives and Record Administration</u>			
National Archives Records Center ATTN: Military Records 9700 Page Avenue St. Louis, MO 63132	Bill Siebert Wilson Sullivan	(314) 538-4085	See Appendix B, Section III, Parts A and B.
National Archives Federal Records Center 1000 Commodore Drive San Bruno, CA 94066	Barbara Bepler	(415) 876-9001	See Appendix B, Section III, Parts A and B.

**Reference Sources
(continued)**

Organizations	Name	Telephone	Nature of Support
---------------	------	-----------	-------------------

GOVERNMENT SOURCES

National Archives and Records Administration (continued)

National Archives Federal Records Center 2400 Avila Road Laguna Niguel, CA 92607-6719	Greg Pearman	(714) 643-4220	See Appendix B, Section III, Parts A and B.
National Archives Archives I (Navy) Pennsylvania Avenue & 7TH Washington, DC 20408	Contractor	(202) 501-5385	See Appendix B, Section II, Parts A and B.
National Archives Archives I (Old Military) Pennsylvania Avenue & 7th Washington, DC 20408	Contractor	(202) 501-5385	See Appendix B, Section II, Parts A and B.
National Archives Archives II (Cartographic/Architect) 8601 Adelphi Road College Park, MD 20740	Contractor	(301) 713-7040	See Appendix B, Section II, Parts A and B.
National Archives Archives II (Civil Reference Branch) 8601 Adelphi Road College Park, MD 20740	Contractor	(301) 713-7250	See Appendix B, Section II, Parts A and B.
National Archives Archives II (Motion Picture Branch) 8601 Adelphi Road College Park, MD 20740	Contractor	(301) 713-7060	See Appendix B, Section II, Parts A and B.

**Reference Sources
(continued)**

Organizations	Name	Telephone	Nature of Support
GOVERNMENT SOURCES			
<u>National Archives and Record Administration (continued)</u>			
National Archives Archives II (Still Picture Branch) 8601 Adelphi Road College Park, MD 20740	Contractor	(301) 713-6660	See Appendix B, Section II, Parts A and B.
National Archives Archives II (Textual Branch) 8601 Adelphi Road College Park, MD 20740	Contractor	(301) 713-7250	See Appendix B, Section II, Parts A and B.
National Archives Federal Records Center 2400 Avila Road Laguna Niguel, CA 92656	Greg Pearman	(714) 643-4220	See Appendix B, Section III, Parts A and B.
National Archives Pacific Sierra Region 1000 Commodore Drive San Bruno, CA 94066	Lisa Miller	(415) 876-9009	See Appendix B, Section III, Parts A and B.
National Archives Pacific Southwest Region 2400 Avila Road Laguna Niguel, CA 92656	Suzanne Dewberry	(714) 643-4220	See Appendix B, Section III, Parts A and B.
National Archives Suitland Branch (Civil/Military) 4205 Suitland Road Suitland, MD 20409	Contractor	(301) 457-7190	See Appendix B, Section II, Parts A and B.

**Reference Sources
(continued)**

Organizations	Name	Telephone	Nature of Support
GOVERNMENT SOURCES			
<u>Library of Congress</u>			
Library of Congress Washington, DC 20536	Contractor	(202) 707-5522	See Appendix B, Section II, Parts A and B.
<u>Smithsonian Institute</u>			
Smithsonian Institution Historical Research Division Washington, DC 20560	Contractor	(202) 357-3133	See Appendix B, Section II, Parts A and B.
<u>Department of Agriculture</u>			
Aerial Photography Field Office P.O. Box 30010 Salt Lake City, UT 84131-0010	Sherrie Holyoak	(801) 975-3503	Source of USDA aerial photographs for post-1956 timeframe.
Consolidated Farm Service Agency North 13th Street West Lancaster, CA 93534	Doug Brand	(805) 942-9549	Source of aerial photos for the county.
Natural Resources Conservation Service 18484 Highway 18, Suite 195 Apple Valley, CA 92307	Jackie Lindgren Rick Aguay	(619) 242-2906	Soil survey for San Bernardino County and old aerial photos.
Natural Resources Conservation Service 222 East Main Street Barstow, CA 92311	Peter Fahnestock	(619) 256-5004	Referred to the Apple Valley office.

**Reference Sources
(continued)**

Organizations	Name	Telephone	Nature of Support
GOVERNMENT SOURCES			
<u>Department of Commerce</u>			
NOAA, Air Force Weather Service 151 Patton Ave, Room 120 Asheville, NC 28801	Janet Wall	(704) 271-4404	Local Climatological Data.
NOAA, National Climatic Data Center Federal Building Asheville, NC 28801	Yolanda Goosch Sam McCowan	(704) 271-4272	Climatology of U.S., NO. 60.
<u>Department of the Interior</u>			
Bureau of Land Management 6221 Box Springs Boulevard Riverside, CA 92507-0714	John Keyes	(909) 697-5383	Several documents on dedudding.
Bureau of Land Management Barstow Resource Area 150 Coolwater Lane Barstow, CA 92311	Tim Reab	(619) 255-8700	Real estate records for the Victorville area.
U.S. Fish and Wildlife 2730 Loker Avenue West Carlsbad, CA 92008	Beth Burr	(619) 431-9440	Referred to the local office in Ventura, CA.
U.S. Fish and Wildlife Ecological Service 2493 Portola Road, Suite B Ventura, CA 93003	Ray Branfield	(805) 644-1766	Listing of endangered species, plants and animals.

Reference Sources

(continued)

Organizations	Name	Telephone	Nature of Support
GOVERNMENT SOURCES			
<u>Department of the Interior</u> (continued)			
U.S. Geological Survey, (ESIC) Box 25046, Bldg 810 Denver Federal Center Denver, CO 80225	Tim Hannon	(303) 202-4200	Aerials for all targets.
U.S.G.S. (DISTRIBUTION) Box 25286, Building 810 Denver Federal Center Denver, CO 80225	Customer Service	(303) 202-4700	Source of all topographical maps.
U.S.G.S. (ESIC) 507 National Center Reston, VA 22092	Customer Service	(703) 860-6045	No information ordered for this site.
<u>State Agencies</u>			
California SHPO Archeological Information Center 2024 Orange Tree Lane Redland, CA 92374	Robin Laska	(909) 792-1497	Archeological and historical sites on site.
California State Archives 1020 East O Street Sacramento, CA 92415-0795	Mr. Metzger	(916) 653-2246	Referral.
California State Library 914 Capital Hall Library and Courts Building Sacramento, CA 94237-0001	John Gonzales	(916) 654-0176	No information found on this site.

**Reference Sources
(continued)**

Organizations	Name	Telephone	Nature of Support
GOVERNMENT SOURCES			
<u>State Agencies (continued)</u>			
California State University San Bernardino Library 5500 University Parkway San Bernadino, CA 92407-2397	Reference Librarian	(909) 880-5084 FAX: 880-7048	No information available on bombing targets.
<u>County Agencies</u>			
San Bernardino County Archives 777 East Rialto Avenue San Bernardino, CA 92415-0795	Jim Hoffer	(909) 387-2030	Have vertical file of news articles, aerial photos and some maps.
San Bernardino County Assessor 172 West 3rd Street San Bernardino, CA 92415-0022	Recorded message	(909) 387-8307	Source for plat maps.
San Bernardino County Flood Control Planning 825 East 3rd Street San Bernardino, CA 92415	Gary Duncan	(909) 387-2529	Aerial photos for entire county.
San Bernardino County Library Lucerne Valley Branch 33103 Old Woman Springs Road Lucerne Valley, CA 92356	Reference Desk	(619) 248-7521	No information on the bombing ranges of Victorville.
San Bernardino County Library Victorville Branch 15011 Circle Drive Victorville, CA 92392	Mr. Booker	(619) 245-4222	No information found on this site.

Reference Sources
(continued)

Organizations	Name	Telephone	Nature of Support
GOVERNMENT SOURCES			
County Agencies (continued)			
San Bernardino County Museum 2024 Orange Tree Lane Redlands, CA 92374	Robin Laska Noella Benvenuti	(909) 798-8570	Cross reference for SHPO.
San Bernardino County Planning 385 N. Arrowhead Avenue San Bernardino, CA 92415	Marla Taub	(909) 387-4131	Land use and hazard information.
San Bernardino County Recorder 222 West Hospitality Land San Bernardino, CA 92415-0022	Recorded message	(909) 387-8322	Source for real estate deeds.
San Bernardino County Sheriff and Bomb Squad 655 East 3d Street San Bernardino, CA 92415	Detective Abernathy	(909) 387-3583	No calls to the Victorville sites.
San Bernardino Director of Airports 825 East 3d Street San Bernardino, CA 92415-0831	Robert Olislagers	(909) 387-2877	No information found on this site.
San Bernardino Public Library 555 West 6th Street San Bernardino, CA 92410	Chris Shovey	(909) 381-8208	Newspaper files on history of WWII and excerpts from publications.

Reference Sources
(continued)

Organizations	Name	Telephone	Nature of Support
NON-GOVERNMENT SOURCES			
<u>National Agencies</u>			
Northern Illinois Library System 4034 East State Street Rockford, IL 61108	Computer Search (NILS)	(815) 229-0330	No information found on this site.
Online Computer Library Center 6565 Franz Road Dublin, OH 43017-3395	Computer Search (OCLC)	(800) 848-5878 (614) 764-6000	Received several publications regarding this site.
Scientific & Technical Information Library Automation System Huntsville, AL 35806	Computer Search (STILAS)	(205) 922-9820	No information found on this site.
Do You Graphics 14827 Old Frederick Road Woodbine, MD 21797-8615	Cyndy Gilley	(410) 442-1060	Photos, prints, and other items which have been referenced by National Archives research.
<u>Local</u>			
Personal Contact 19446 Corwin Road Apple Valley, CA 92307	Edward Laska	(619) 242-5746	(See interview at I-4)
Personal Contact 518 Why Worry Lane Phoenix, AZ 85021	John Lynch	(205) 922-9820 (800) 398-4693	No information on Victorville targets.

Reference Sources

(continued)

Organizations	Name	Telephone	Nature of Support
NON-GOVERNMENT SOURCES			
<u>Local (continued)</u>			
Personal Contact 809 Standish Way Redlands, CA 92373	Arda Haenszal	(909) 798-0550	No information found on this site.
Personal Contact 2162 Belhaven Avenue Simi Valley, CA 93063	Jerry Theaker	(805) 527-6758	No information found on this site.
San Bernardino Visitor and Convention Bureau 201 North E Street San Bernardino, CA 92401	Staff	(909) 889-3980	Information packets on the area.
Scholarly Resource Inc. 104 Green Hill Avenue Wilmington, DE 19805-1897	Customer Service	(800) 772-8937	Source of historical microfiche and histories.
Victor Valley Community College Library 18422 Bear Valley Road Victorville, CA 92392-9699	Reference Desk	(619) 245-4271	No information on targets around Victorville. Referral.
Victor Valley Economic Development Authority 13246 Eagle Street Victorville, CA 92394-0000	Richard Cole Michael Pexton	(619) 246-6115	No information found on this site.

Reference Sources**(continued)**

Organizations	Name	Telephone	Nature of Support
NON-GOVERNMENT SOURCES			
<u>Local</u> (continued)			
Victorville Chamber of Commerce 14174 Greentree Boulevard Victorville, CA 92392	Sally Martinez	(619) 245-6506	Informational packet on the area.
Victorville Museum 11873 Apple Valley Road Apple Valley, CA	Walter Day	(619) 240-2111	Exhibit of the air base history; photographs, old uniforms and other items.
Victorville Museum 11873 Apple Valley Road Apple Valley, CA	Wayne Fowlie	(619) 240-2111	(See interview at I-5)

ORDNANCE AND EXPLOSIVES
ARCHIVES SEARCH REPORT
for the former
VICTORVILLE PBR # 13
SAN BERNARDINO COUNTY
LUCERNE VALLEY, CALIFORNIA
OE PROJECT NUMBER J09CA067901

APPENDIX B

REFERENCES AND ABSTRACTS

APPENDIX B

REFERENCES AND ABSTRACTS

Table of Contents

Section I: Bibliographies

Section II: National Capitol Region Archives Search

Part A: Positive Findings

Part B: Negative Findings

Section III: Regional National Archives Findings

Part A: Positive Findings

Part B: Negative Findings

APPENDIX B

BIBLIOGRAPHIES

SECTION I

- B-1 Mandatory Plan for Ordnance and Explosives (OE), Mandatory Center of Expertise (MCX) and Design Center, CEHND 1105-3-9, U.S. Army Corps of Engineers, Huntsville Division, 10 August 1992.
- B-2 DERP FUDS OE Archives Search Report Instructions, Version 1.0 w/changes, U.S. Army Corps of Engineers, Rock Island District, 17 April 1992.
- B-3 Site Safety & Health Plan for OE Investigations (Appendix B-64), USACE, Rock Island District, 25 June 1992.
- B-4 U.S. Army Corps of Engineers, Huntsville Division, "Defense Environmental Restoration Program for Formerly Used Defense Sites, Ordnance and Explosives, Archives Search Report Procedural Document," CEHND 1115-3-521, June 1994.
- B-5 Department of the Army, AR 200-1, Environmental Protection and Enhancement, 23 April 1990.
- B-6 War Department, TM 9-1904, Ammunition Inspection Guide, March 1944 (D-1).
- B-7 Climatography of the United States No. 60 - Climate of California, National Oceanic and Atmospheric Administration June 1982.
- B-8 Archives Search Report Manual - Defense Environmental Restoration Program for Formerly Used Defense Sites, Ordnance and Explosives, USACE-Rock Island District, 17 April 1995.
- B-9 DERP FUDS FDE for Site J09CA067900 - Victorville PBR # 13 28 April 1994 (E-1).
- B-10 Site Survey Summary Sheet for DERP FUDS J09CA067900 - Victorville PBR # 13, (E-2)
- B-11 Project Summary Sheet for DERP FUDS OE Project J09CA067901 - 23 June 1994 (E-3).

- B-12 Letter, Species List for Victorville PBR # 13 Area, U.S. Department of Interior - Fish & Wildlife Service
30 January 1996 (F-1).
- B-13 Letter, War Department, Office of Chief of Engineers, Subj: Deduinding of Victorville Bomb Targets (including #13),
4 February 1948 (F-2).
- B-14 Certificate of Clearance - Victorville Bomb Targets
(including #13), 22 March 1948 (F-3).
- B-15 Letter, Archeological Center (SHPO), Subject: Victorville #13
Historical Resources Record Search, 17 January 1996.
- B-16 Assessor's Map, Book 454, Page 56 - San Bernardino County
Section 6 (G-1).
- B-17 Current Land Owners for Victorville PBR # 13 Site (G-2).
- B-18 Map of Cultural Sites at former Victorville PBR # 13
(G-3).
- B-19 Aerial photograph of Victorville PBR # 13, dated
16 August 1989 (K-1).
- B-20 Aerial photograph of Victorville PBR #13, (undated)
NAPP 1837-014 (K-2).

SECTION II
NATIONAL CAPITOL REGION ARCHIVES FINDINGS
PART A
POSITIVE FINDINGS

VICTORVILLE PRECISION BOMBING RANGE

***CENTER FOR AIR FORCE HISTORY
WASHINGTON, DC***

Microfilm Roll No. B2647

Page 1481 thru Roll No. B2648

Historical Record of Victorville Army Airfield, Victorville, CA, January 1939-
30 June 1944

***CENTER OF MILITARY HISTORY
WASHINGTON, DC***

Historical Research Branch

Posts, Camps, and Stations - WWII Vol. XII (T-Z)
Data Sheet, Victorville, CA, 1943-1945

***NARA - ARCHIVES I
WASHINGTON, DC***

RG 18 (Records of the Army Air Corps)

Entry: Project Files - Airfields, 1939-1942
Box 1834

Correspondence Relative to Proposed Construction Victorville Advanced Twin
Engine School, (Bombadier), June 6, 1941

Entry: Project Files - Airfields, 1939-1942
Box 1834

Correspondence Relative to Funding for Bombing Range Targets at Victorville
Army Airfield, 30-31 January 1942

Entry: Project Files - Airfields, 1939-1942

Box 1834

Correspondence Relative to Government Owned Lands Required for Advance Flying School No. 4, Victorville Bombing Ranges, February-March 1942

Entry: Project Files - Airfields, 1939-1942

Box 1834

Memorandum Relative to Real Estate Data For Victorville Army Flying School Ordnance Storage Facilities, March 1942

Entry: Project Files - Airfields, 1939-1942

Box 1834

Memoranda Relative to Real Estate Acquisition for Victorville Army Flying School Target Ranges, Ordnance Facilities, Etc, March-April 1942

Entry: Project Files - Airfields, 1939-1942

Box 1834

Memoranda Relative to Land Acquisition for Victorville Military Airport Bombing Ranges, June-October 1942

Entry: Project Files - Airfields, 1939-1942

Box 1834

Memorandum Relative to Land Acquisition, Victorville Army Airfield Bombing Ranges, September 17, 1942

Entry: Project Files - Airfields, 1939-1942

Box 1835

Authorized Ordnance Storage Facility Construction, Victorville Army Flying School, November 1941-May 1942

Entry: Project Files - Airfields, 1939-1942

Box 1835

Detailed Real Estate Acquisition Data, Victorville Army Flying School Bombing Ranges, January-August 1942

***NARA - ARCHIVES II
COLLEGE PARK, MD***

RG 18 (Records of the Army Air Corps)

Entry 2: Air Adjutant General's Unclassified Decimal File, 1944-1946
Box 2281

Memorandum Relative to Status and Proposed Usage of Victorville Army
Airfield, 1945

Entry 2: Air Adjutant General's Unclassified Decimal File, 1944-1946
Box 2281

Memorandum Relative to Hangar Modifications, Victorville Army Airfield, 1945

Entry 2: Air Adjutant General's Unclassified Decimal File, 1944-1946
Box 2281

Correspondence Relative to Installation of Sonic Bomb Scoring Targets,
Victorville Army Airfield Bombing Ranges, March-April 1945

Entry 2: Air Adjutant General's Unclassified Decimal File, 1944-1946
Box 2281

Letter Relative to Status of Victorville Army Airfield, 4 October 1945

Entry 2: Air Adjutant General's Unclassified Decimal File, 1944-1946
Box 2281

Memorandum Relative to Use of Victorville Army Airfield for Surplus Aircraft
Storage, 13 November 1945

Entry 2: Air Adjutant General's Unclassified Decimal File, 1944-1946
Box 2281

Memorandum Relative to Assignment of Victorville Precision Bombing Ranges
to Fourth Air Force, 6 February 1946

Entry 2: Air Adjutant General's Unclassified Decimal File, 1944-1946
Box 2281

Correspondence Relative to Decontamination of Bombing and Target Ranges,
August -September 1946

Entry 292: Air Adjutant General's Central Decimal Files, October 1942-1944
Box 1592

Rolled Map, Bombing Range Target Areas, Advanced Twin Engine School,
Victorville Army Airfield

Entry 292: Air Adjutant General's Central Decimal File, October 1942-1944
Box 1592

Correspondence Relative to Bombing Target Site Acquisition, Victorville
Advanced Twin Engine School, January 1943

Entry 292: Air Adjutant General's Central Decimal File, October 1942-1944
Box 1592

Memorandum Relative to Bombing Target Situation, Victorville Army Airfield,
26 October 1943

Entry 292: Air Adjutant General's Central Decimal File, October 1942-1944
Box 1641

Correspondence Relative to Status and Requirements of Bombing and Gunnery
Ranges, Victorville Advanced Twin Engine School, 12 August 1943

RG 48 (Records of the Department of the Interior)

Entry 749B: Central Classified Files, 1937-1953
Box 3221

Correspondence Relative to Withdrawal of Public Lands for Use by Victorville
Army Flying School, May 1943

RG 77 (Records of the Office of the Chief of Engineers)

Entry 1011: Security Classified Subject Files, 1940-1945
Box 855

Memorandum Relative to Cost Estimate for Bombing Target Site Construction,
Victorville Military Airfield, 14 January 1942

Entry 1023: General Correspondence Relating to Airfields, Part II, Progress Reports,
1940-1945

Box 69

Construction Program at Air Corps Stations, Advanced Twin Engine School,
Victorville, 15 June 1941

Entry 1023: General Correspondence Relating to Airfields, Part II, Progress Reports,
1940-1945

Box 80

Construction Program at Air Corps Stations, Advanced Twin Engine School,
Victorville, 15 September 1941

Entry 1023: General Correspondence Relating to Airfields, Part II, Progress Reports,
1940-1945

Box 85

Construction Program at Air Corps Stations, Advanced Twin Engine School,
Victorville, 30 September 1941

Entry 1023: General Correspondence Relating to Airfields, Part II, Progress Reports,
1940-1945

Box 90

Construction Program at Air Corps Stations, Advanced Twin Engine School,
Victorville, 31 October 1941

Entry 1023: General Correspondence Relating to Airfields, Part II, Progress Reports,
1940-1945

Box 105

Construction Program at Air Corps Stations, Advanced Twin Engine School,
Victorville, 31 January 1942

RG 107 (Records of the Secretary of War)

Entry 102: Administrative Assistant to the Secretary of War, Project Decimal File, 1943-
January 1946

Box 133

Correspondence Relative to Land Acquisition, Victorville Army Airfield
Bombing Ranges, April 1943

***SMITHSONIAN AIR AND SPACE MUSEUM
WASHINGTON, DC***

Videodisc 3B-21786

Aerial View, Test Area, Victorville Army Airfield

Videodisc 3B-48582 thru 48621

17 Aerial Views of Landing Field, Surrounding Area, and Ranges, Victorville Army
Airfield

***USACE OFFICE OF HISTORY
ALEXANDRIA, VA***

Real Estate Records

Realty Control File Summary
Victorville Precision Bombing Range

SECTION II
NATIONAL CAPITOL REGION ARCHIVES FINDINGS
PART B
NEGATIVE FINDINGS

VICTORVILLE PRECISION BOMBING RANGE

***LIBRARY OF CONGRESS
WASHINGTON, DC***

Geography and Map Division

***NARA - ARCHIVES I
WASHINGTON, DC***

RG 18 (Records of the Army Air Corps)

Entry: Central Decimal File, 1939-1942

RG 49 (Records of the Bureau of Land Management)

Entry 1515: Central Files (Division of Technical Programs - Range Staff), 1937-1955

Entry 1519: Records Relating to District Grazing Boundaries, 1935-1961

RG 69 (Records of the Work Projects Administration)

Entry: Central Files, 1935-1944

Entry: Civil Works Administration Central Files, 1931-1954

Entry: FERA, New General Subject Series

Entry: General Subject Series, National Defense Program, 1940-1946

Entry: WPA General Series, National Defense, 1940-1942

RG 135 (Records of the Public Works Administration)

Entry: Project Files

RG 153 (Records of the Office of the Judge Advocate General)

Entry: Reservations File, 1800-1950

RG 162 (Records of the Federal Works Agency)

Entry 7: Central Decimal Files, 1941-1949

Entry 21: Records of the War Public Works Program, 1941-1949

RG 337 (Records of the Headquarters, Army Ground Forces)

Entry 55A: Project Decimal Files, 1942-1947

Entry: Western Defense Command, Airfields

RG 407 (Records of the Adjutant General's Office, 1917-)
Entry: Army - AG Decimal File, 1940-1945

***NARA - ARCHIVES II
COLLEGE PARK, MD***

RG 18 (Records of the Army Air Corps)
Entry: Air Adjutant General, Bulky File, October 1944-1946
Entry 294: Air Adjutant General, Bulky Files, October 1942-1944

RG 22 (Records of the Bureau of Fish and Wildlife)
Entry 243: Cooperative Agreements with the Corps of Engineers, 1943-1962

RG 30 (Records of the Bureau of Public Roads)
Entry 54: Correspondence, 1941-1945

RG 48 (Records of the Department of the Interior)
Entry 749B: Central Classified Files, 1937-1953

RG 57 (Records of US Geological Survey)
Entry 27: Correspondence and Related Records, 1906-1948

RG 77 (Records of the Office of the Chief of Engineers)
Accession 51A-277: District Files, 1945
Accession 52A-40: Division Files, 1945
Accession 53A-132: Miscellaneous Files, 1945
Accession 58A-1076: Real Estate Files
Entry 18: Correspondence, 1789-1942
Entry 106B: General Correspondence, 1918-1945
Entry 1019: General Correspondence with Service Commands, 1918-1949

RG 92 (Records of the Office of the Quartermaster General)
Entry 1890: General Correspondence (Subject File), 1936-1961
Entry 1890AA: Formerly Classified General Correspondence (Subject Files), 1936-1954
Entry 1892: Classified Geographic File, 1936-1945
Entry 1892A: General Correspondence (Geographic File), 1936-1945

RG 107 (Records of the Office of the Secretary of War)
Entry 211: Office, Assistant Secretary of War for Air, Establishment of Airfields and Airbases, 1940-1945
Entry 158: Special Assistant for Construction - MJ Madigan, General Correspondence, 1940-1945
Entry 159: Special Assistant for Construction - MJ Madigan, Projects, 1940-1945

RG 111 (Records of the Office of the Chief Signal Officer)

Entry: Unclassified Central Decimal Files, 1941-1957

RG 112 (Records of the Office of the Surgeon General)

Entry: Historical Unit, Medical Detachment - Records Used for Preparing WW II Era Medical Unit Histories

Entry 31: Geographic Series, 1938-1946

Entry 32: Geographic Series (Formerly Security Classified), 1938-1946

RG 115 (Records of the Bureau of Reclamation)

Entry 7: General Administrative and Program Records, 1919-1945

RG 160 (Records of the Army Service Forces)

Entry 25: Director of Plans and Operations, Liaison and Control Branch, Subject Files, 1942-1944

Entry 27: Mobilization Division, Command Installation Branch, Correspondence File, 1942-1946

Entry 138: Readjustment Division, Central Decimal Files, 1943-1944

Entry 139: Readjustment Division, Central Decimal Files, 1943-1946

RG 165 (Records of War Department General and Special Staffs)

Entry 258: Installations Branch, Reports and Correspondence Relating to Construction, Utilization, and Disposal of Army Installations, 1944-1947

Entry 484D: Federal Works Agency Project Files, 1940-1946

Entry 484G: Federal Agencies Branch, Airport Development Project Files, 1940-1942

RG 168 (Records of the Bureau of the National Guard)

Entry 344: State Decimal Files, 1941-1947

Entry 348: State Guard State Files, 1941-1949

RG 175 (Records of the Chemical Warfare Service)

Accession 67A-4900: General Correspondence, 1946-1954

Accession 67A-4900: Miscellaneous Files, 1946-1954

Accession 67A-4900: Station Files, 1946-1954

Entry 2A: General Correspondence (Subject Series), 1942-1945

Entry 2B: Correspondence with the War Department and Other Government Agencies, Army Commands and Units, and Schools (Miscellaneous Series), 1942-1945

RG 207 (Records of the Housing and Home Finance Agency)

Entry 24: General National Housing Records, War Housing Program, 1942-1947

RG 218 (Records of the U.S. Joint Chiefs of Staff)

Entry: Series, 1942-1959, Geographic File

- RG 269 (Records of the General Services Administration)
Entry 62: Real Property Disposal Case Files Transferred from the Farm Credit Administration, 1945-1953)
- RG 270 (Records of the War Assets Administration)
Entry 3: Office of Information, Subject Files, 1946-1959
- RG 291 (Records of the Federal Property Resources Service)
Entry 5: Real Property Disposal Case Files, 1962
- RG 319 (Records of the Army Staff)
Entry 47: Army Intelligence Project Decimal File, 1941-1945
- RG 340 (Records of the Office of the Secretary of the Air Force)
Entry 53: Air Coordinating Committee, General File, 1945-1950
- RG 341 (Records of the Headquarters, US Air Force)
Entry 468: General File, Subject, 1944-1950
- RG 342 (Records of US Air Force Commands)
Entry: "Sarah Clarke" Decimal Correspondence File

***NARA - CARTOGRAPHIC BRANCH
COLLEGE PARK, MD***

Record Groups Specified in Project Work Plan

***NARA - MOTION PICTURE BRANCH
COLLEGE PARK, MD***

Record Groups Specified in Project Work Plan

***NARA - STILL PICTURES BRANCH
COLLEGE PARK, MD***

Record Groups Specified in Project Work Plan

***NARA - SUITLAND REFERENCE BRANCH
SUITLAND, MD***

- RG 77 (Records of the Office of the Chief of Engineers)
Entry 391: Construction Completion Reports, 1917-1943
Entry 393: Historical Records of Buildings at Active Army Posts, 1905-1942

RG 156 (Records of the Office of the Chief of Ordnance)
Entry 36: General Correspondence, 1917-1941
Entry 39: Confidential Correspondence, 1917-1940

RG 175 (Records of the Chemical Warfare Service)
Entry 1: Central Correspondence, 1918-Oct 1942
Entry 4: Secret & Confidential Central Correspondence, 1918-1942

RG 336 (Records of the Office of the Chief of Transportation)
Entry: Historical Program Files, 1940-1950

RG 338 (Records of U.S. Army Commands, 1942-)
Entry: Records of Posts, Camps and Stations
9th Service Command
Western Defense Command

RG 394 (Records of U.S. Army Continental Commands, 1920-1942)
Entry 296: General Correspondence of the Construction Division, 1916-1945
Entry 298: Historical Reports Relating to Post Planning, 1899-1945

RG 407 (Records of the Adjutant General's Office, 1917-)
Entry 427: WWII Operations Reports

***WASHINGTON NATIONAL RECORDS CENTER
SUITLAND, MD***

RG 77 (Records of the Office of the Chief of Engineers)
Accession A52-117
Accession A52-259
Accession A52-434
Accession 68A-1932

SECTION III
REGIONAL NATIONAL ARCHIVES FINDINGS
PART A
POSITIVE FINDINGS

VICTORVILLE PBR 13, CA

NARA, PACIFIC SOUTHWEST REGION
LAGUNA NIGUEL, CA

RG 49, Records of the Bureau of Land Management
Box 1029

Memo, Subject: Contamination of Land by Defense Agencies,
dated April 27, 1962

RG 77, Records of the Office of the Chief of Engineers
Box 2, Realty Historical Files
Affidavit in Support of Motion to Dismiss, and Order Thereon
(As to Tracts 14 and 15)
Judgement by Default
(As to Tracts 11)
Preliminary Certificate of Title No. 140863
Tract No. 11
Victorville Airport Extension
Judgement for Deficiency
(As to Tract No. 12 Only)
Quitclaim Deed, Dated 28 August 1942 for 4.195 Acres,
Victorville Army Flying School
List of Documents Pertaining to Victorville AAF, California
Transmitted to Division Engineer, South Pacific Div,
California
Map, Victorville Military Airport Bombing Targets, File No.
L-113, CAL-26, No Date Listed
Map, Real Estate, Victorville Army Air Field, Expansion of
Facilities, dated 3 February 1945, Drawing No. 208-P

RG 270, Records of the War Assets Administration

Box 161, Real Property Disposal Case Files
Public Land Order 125, California, Withdrawing Public Lands
for Use of the War Department as Bombing Target Sites

Memo, Subject: Report on the Dedudding of Victorville
Bombing Targets, San Bernardino County, California, dated
20 October 1947 Nos. 6, 8, 9, 15, Y, 1-Z and 2-Z

Memo, Subject: Report of the Dedudding of Victorville
Bombing Targets, San Bernardino County, California, dated
4 February 1948 Nos. 3, 7, 10, 11, 12, 13, 14, 16, 17, 19
and 20

Certificate of Clearance, Victorville Bombing Targets, Nos.
3, 7, 10, 11, 12, 13, 14, 16, 17, 19 and 20, dated 22
March 1948

Memo to Surplus Property Disposal, Farm Credit
Administration, re: Decontamination certificate covering
Victorville Bombing Targets Nos. 6, 8, 9, 15, Y, 1-Z and
2-Z, dated June 4, 1948

Map, Auxiliary Landing Fields Location Map, Victorville
Military Airport, Victorville, California, dated December
1941, File No. 514/68

**NARA, FEDERAL RECORDS CENTER
LOS ANGELES, CA**

Accession No. 77-82-0045
Box 12/20, George Air Force Base, Title Insurance to Tract
#11

**NARA, NATIONAL PERSONNEL RECORDS CENTER
ST. LOUIS, MO**

Location: K110.5035-1, 1941-1950, IRIS 00905362
Brief History of George AFB, 1941-1950

SECTION III
REGIONAL NATIONAL ARCHIVES FINDINGS
PART B
NEGATIVE FINDINGS

VICTORVILLE PBR 13, CA

***NARA, PACIFIC SOUTHWEST REGION
LAGUNA NIGUEL, CA***

RG 18, Records of the Army Air Forces
All Entries
Nothing found.

RG 49, Records of the Bureau of Land Management
All Entries
Nothing found.

RG 92, Records of the Quartermaster General
All Entries
Nothing found.

RG 121, Records of the Public Buildings Service
All Entries
Nothing found.

RG 156, Records of the Chief of Ordnance
All Entries
Nothing found

RG 219, Records of the Office of Defense Transportation
All Entries
Nothing found.

RG 72, Records of the Bureau of Aeronautics
Nothing of value to this ASR found.

RG 77, Records of the Office of the Chief of Engineers
LA District, Military Construction Projects Log Books 1948-
1970, George AFB
Nothing of value to this ASR found.

NARA, PACIFIC SIERRA REGION
SAN BRUNO, CA

RG 30, Records of the Bureau of Public Roads
all records

Nothing found

RG 49, Records of the Bureau of Land Management
Boxes 1098G-1098J
Box 1015, Series 98
Index to Investigation Case Files 1927-1945
Nothing of value to this ASR found

RG 92, Records of the Office of the Quartermaster
All records
Nothing found

RG 112, Records of the Office of the Surgeon General (Army)
All records
Nothing found

RG 156, Records of the Office of the Chief of Ordnance
All records
Nothing found

RG 219, Records of the Office of Defense Transportation
All records
Nothing found

RG 291, Records of the Federal Property Resources Service
All records
Nothing found

RG 392, Records of the U.S. Army Coast Artillery Districts and
Defenses, 1901-1942
All records
Nothing found

RG 406, Records of the Federal Highway Administration
Accession Number 72A1388
Box 9
Nothing of value to this ASR found
Boxes 3, 4, 5, 6, California FAP Route Reports, 1920-1969,

**NARA, FEDERAL RECORDS CENTER
LOS ANGELES, CA**

Accession No. 70A 1364

Boxes 1 and 2

Nothing found

Accession No 77-82-0045

Boxes 1, 2, 3, 4, 6, 7, 8, 9, 10, 11, 13, 14, 15, 18, 19, 20

Nothing found

Accession No 77-85-0006

Boxes 1, 9, 10

Box 3, 6, 8 transferred to U.S. Army Corps of Engineers, Los Angeles, 8/6/87 and Box 7, 1/29/95

Nothing found

Accession No 77-85-0003

Boxes 1, 2, 3, 4, 6, 7, 8, 9

Nothing found

Accession No 77-70A132

Boxes 1, 2, 3, 4, 5 were destroyed

Box 6 transferred to Los Angeles Corps of Engineers District (Not found at COE by researchers)

Nothing found

**NARA, NATIONAL PERSONNEL RECORDS CENTER
ST. LOUIS, MO**

Location: IRIS 1017448

Nothing of value to this ASR found

Box 36, Geigen thru George

Nothing of value to this ASR found

Boxes 23, 28, 53, George, George-Gila Bend

Nothing of value to this ASR found

Accession Number 342-50A4042

Box 06-38-18-1-3 (1 of 2)

Box 06-38-18-1-5 (2 of 2)

Nothing of value to this ASR found

ORDNANCE AND EXPLOSIVES
ARCHIVES SEARCH REPORT
for the former
VICTORVILLE PBR # 13
SAN BERNARDINO COUNTY
LUCERNE VALLEY, CALIFORNIA
OE PROJECT NUMBER J09CA067901

APPENDIX C

GLOSSARY

APPENDIX C

GLOSSARY

ASR	Archives Search Report
BD/DR	Building Demolition & Debris Removal
BLM	Bureau of Land Management
DA	Department of the Army
DERP FUDS	Defense Environmental Restoration Program for Formerly Used Defense Sites
DOD	Department of Defense
EOD	Explosive Ordnance Disposal
F	Fahrenheit
FDE	Findings and Determination of Eligibility
FUDS	Formerly Used Defense Site(s)
GSA	General Services Administration
HTRW	Hazardous, Toxic and Radiological Waste
INPR	Inventory Project Report
LB.	Pound
OE	Ordnance and Explosives
PA	Preliminary Assessment
QASAS	Quality Assurance Specialist (Ammunition Surveillance)
RAC	Risk Assessment Code
SHPO	State Historical Preservation Office
SI	Site Inspection
WD	War Department

ORDNANCE AND EXPLOSIVES
ARCHIVES SEARCH REPORT
for the former
VICTORVILLE PBR # 13
SAN BERNARDINO COUNTY
LUCERNE VALLEY, CALIFORNIA
OE PROJECT NUMBER J09CA067901

APPENDIX D

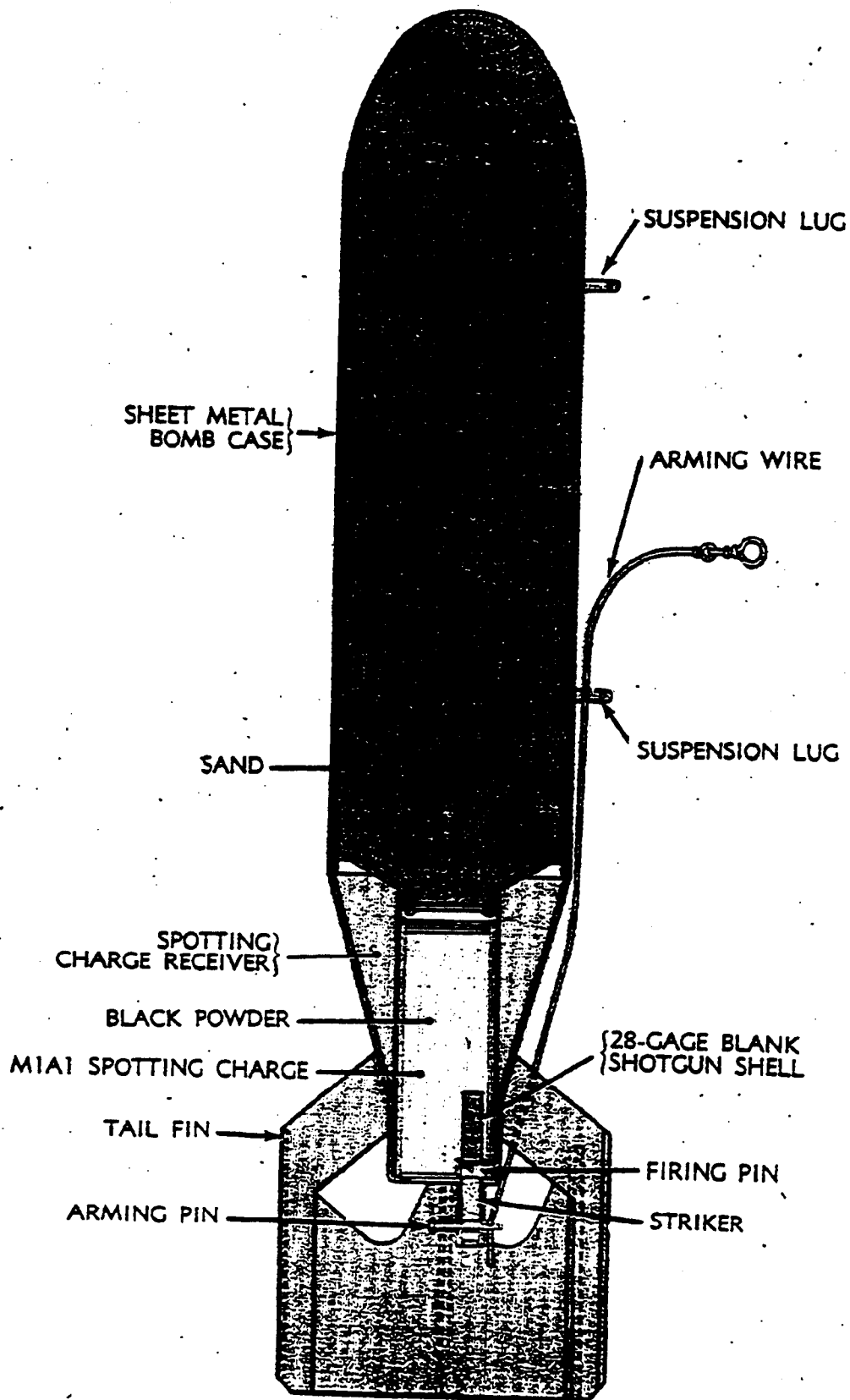
TEXTS/MANUALS

APPENDIX D

TEXTS/MANUALS

TABLE OF CONTENTS

D-1 Bomb, Practice, 100 lb., M38A2 (B-6).



100-pound, M38A2—Sectioned

ORDNANCE AND EXPLOSIVES
ARCHIVES SEARCH REPORT
for the former
VICTORVILLE PBR # 13
SAN BERNARDINO COUNTY
LUCERNE VALLEY, CALIFORNIA
OE PROJECT NUMBER J09CA067901

APPENDIX E

REPORTS/STUDIES

APPENDIX E

REPORTS/STUDIES

TABLE OF CONTENTS

- E-1 DERP FUDS FDE for Site J09CA067900 - Victorville PBR # 13
28 April 1994 (B-9).
- E-2 Site Survey Summary Sheet for DERP FUDS J09CA067500
Victorville PBR # 13 (B-10).
- E-3 Project Summary Sheet for DERP FUDS OE Project J09CA067901
Victorville PBR # 13, 23 June 1994 (B-11).

4-287

**DEFENSE ENVIRONMENTAL RESTORATION PROGRAM
FORMERLY USED DEFENSE SITES
FINDINGS AND DETERMINATION OF ELIGIBILITY**

**VICTORVILLE PRECISION BOMBING RANGE NO. 13
SAN BERNARDINO COUNTY, CALIFORNIA
PROJECT NO. J09CA067900**

FINDINGS OF FACT

1. In May 1943, 640 acres were transferred from the U.S. Department of the Interior to the War Department through Public Land Order 125.

13
2. Victorville PBR No. 13 was used by the Army Forces based at Victorville Airfield as a practice bombing area. There were no buildings on the site. The Department of Defense (DOD) improvements on the site consisted of frame butts and appurtenances, fences and gates, and a bombing target. The bombing target, located in the center of the site, was composed of asphalt strips approximately 5 feet wide configured as three concentric circles with approximate radii of 100, 200 and 300 feet. In addition, there were two strips of asphalt which transected the concentric circles at right angles to each other. Four more weathered asphalt strips configured as a square with sides 270 feet in length were found in the west portion of the site.

13
3. Victorville PBR No. 13 was informally returned to the U.S. Department of the Interior in November 1948 by a Letter of Transfer. The Letter of Transfer declared the bombing target to have been deduded and certified to be free and clear of explosives or explosive objects reasonably possible to detect by visual inspection. All removable improvements, e.g. fences and gates, were removed. The transfer of land from the DOD to the department of the Interior became official in March 1954, by Public Land Order 948. Currently, the site is controlled by the U.S. Department of the Interior, Bureau of Land Management, however, 70 parcels, consisting of two and one-half acres each, are owned by private land owners.

DETERMINATION OF ELIGIBILITY

Based on the foregoing Finding of Fact, Victorville Precision Bombing Range No. 13, Project No. JO9CA067900 has been determined to be formerly used by Department of Defense. It is therefore eligible for the Defense Environmental Restoration Program - Formerly Used Defense Sites established under 10 U.S.C. 2701 et seq.

28. Apr 94
Date

Milton Hunter
for MILTON HUNTER
Brigadier General, U.S. Army
Commanding

SITE SURVEY SUMMARY SHEET
DERP-FUDS SITE NO. J09CA067900
VICTORVILLE PRECISION BOMBING RANGE NO. 13
SAN BERNARDINO COUNTY, CALIFORNIA

SITE NAME: Victorville Precision Bombing Range (PBR) No. 13.

LOCATION: The former Victorville PBR No. 13 was located approximately 12 miles southeast of Lucerne Valley, California (see location map enclosed).

SITE HISTORY: In May 1943, 640 acres were transferred from the U.S. Department of the Interior to the War Department through Public Land Order 125. The site was used by the Army Air Forces based at Victorville Airfield as a practice bombing area. In November 1948, PBR No. 13 was transferred back to the U.S. Department of the Interior, Bureau of Land Management, however, 70 parcels, consisting of two and one-half acres each, are owned by private land owners.

SITE VISIT: A site visit was conducted by Dennis Parker and Paul Robinson, The Earth Technology Corporation.

CATEGORY OF HAZARD: Potential OEW.

PROJECT DESCRIPTION: CEHND to determine the need for further study and remedial action.

AVAILABLE STUDIES AND REPORTS: A real estate file is maintained by the Real Estate Division, Los Angeles District, Army Corps of Engineers. The real estate file contains a partial record of acquisition and disposal information relative to the site. The real estate file also contains a document declaring the bombing target to be free and clear of explosives and explosive objects reasonably possible to detect by visual inspection.

PA/POC: Debra Castens, (213) 894-2865, Los Angeles District.

PROJECT SUMMARY SHEET
FOR
DERP-FUDS OEW PROJECT NO. J09CA067901
VICTORVILLE PRECISION BOMBING RANGE NO. 13
DERP-FUDS SITE NO. J09CA067900
23 JUNE 1994

PROJECT DESCRIPTION: Site was formerly used as a practice bombing area by Army Air Forces stationed at Victorville Airfield. The site was declared excess in 1948 and the Letter of Transfer declared the site deduded and certified ordnance free. It is assumed that only a visual surface survey was conducted, the standard at that time. A subsurface investigation may be appropriate. Presently, there are approximately six homes on the site, underground cable lines, and unpaved roads.

PROJECT ELIGIBILITY: Victorville Precision Bombing Range No. 13 was used by the Army Air Force during the 1940s. Any ordnance found could be the result of past DOD activities.

POLICY CONSIDERATIONS: There appears to be no policy consideration that would prohibit the proposal of this project.

PROPOSED PROJECT: Recommend the Corps' Mandatory Center of Expertise (MCX) for OEW at Huntsville Division make a determination if further action is appropriate. If the MCX decides an Archives Search Report is necessary, it is suggested that one ASR be done for all the Victorville Precision Bombing Ranges.

RAC FORM: Attached

DISTRICT POC: Request that CEHND inform Mr. Jatin Desai, (213) 894-6266, Los Angeles District, when a determination is made in regard to project status.

ORDNANCE AND EXPLOSIVES
ARCHIVES SEARCH REPORT
for the former
VICTORVILLE PBR # 13
SAN BERNARDINO COUNTY
LUCERNE VALLEY, CALIFORNIA
OE PROJECT NUMBER J09CA067901

APPENDIX F

LETTERS/MEMORANDUMS/MISCELLANEOUS ITEMS

APPENDIX F

LETTERS/MEMORANDUMS/MISCELLANEOUS ITEMS

TABLE OF CONTENTS

- F-1 Letter, Species List for Victorville PBR # 13 Area, U.S. Department of Interior - Fish & Wildlife Service
30 January 1996 (B-12).
- F-2 Letter, War Department, Office of Engineers, Subject:
Dedudding of Victorville Bomb Targets (including #13),
4 February 1948 (B-13).
- F-3 Certificate of Clearance - Victorville Bomb Targets
(including #13), 22 March 1948 (B-14).



United States Department of the Interior

FISH AND WILDLIFE SERVICE

Ecological Services
Ventura Field Office
2493 Portola Road, Suite B
Ventura, California 93003

January 30, 1996

Shirley Daniels
Information Management Specialist
Attention: SIOAC-ESL
Department of the Army
U. S. Army Technical Center for Explosive Safety
Savanna, Illinois 61074-9639

Subject: Species List for Specified Areas near Victorville, San Bernardino County, California

Dear Ms. Daniels:

This letter is in response to your facsimile transmission, dated and received on January 8, 1996 requesting a compilation of listed and candidate species that may occur in the following specific areas near Victorville, California.

PBR Y- Township 4N, Range RE, Sections 24 and 25
PBR 1- Township 6N, Range 5E, Sections 19 and north ½ of 30
PBR 13 - Township 3N, Range 4E, Section 6

These areas may contain unexploded ordnance and explosive wastes. The U.S. Army Technical Center for Explosive Safety (USATCES) is preparing to survey the above areas for unexploded ordnance. The information enclosed in this letter will be used by the USATCES in preparation for the survey.

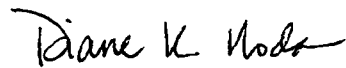
Our records indicate that the federally listed desert tortoise (*Gopherus agassizii*) is likely to occur within the survey area.

This letter fulfills the requirements of the Service under section 7(c) of the Endangered Species Act of 1973, as amended (Act). If the subject project may affect a listed species, the Department of the Army (Army) has the responsibility to prepare a biological assessment if the project is a construction project which may require an environmental impact statement^{1/}. If a biological assessment is not required, the Army still has the responsibility to review its proposed activities and determine whether the listed species will be affected.

During the assessment or review process, the Army may engage in planning efforts, but may not make any irreversible commitment of resources. Such a commitment could constitute a violation of section 7(d) of the Endangered Species Act. If a listed species may be affected, the Army should request, in writing through our office, formal consultation pursuant to section 7 of the Act. Informal consultation may be used to exchange information and resolve conflicts with respect to listed species prior to a written request for formal consultation.

Should you have any questions regarding the species listed, or your responsibilities under the Act, please contact Doug Laye of my staff at (619) 255-8844.

Sincerely,



Diane K. Noda
Field Supervisor

Enclosure

^{1/} "Construction Project" means any major Federal action which significantly affects the quality of the human environment designed primarily to result in the building or erection of man-made structures such as dams, buildings, roads, pipelines, channels and the like. This includes Federal actions such as permits, grants, licenses, or other forms of Federal authorizations or approval which may result in construction.

WAR DEPARTMENT
Office of the Chief of Engineers
9800 TSU DETACHMENT NO. 14
BOMB AND SHELL DISPOSAL TEAM

4 February 1948

SUBJECT: Report of the dedudding of Victorville Bombing
Targets, San Bernardino County, California.

TO: Division Engineer
South Pacific Division
Corps of Engineers, War Dept
Oakland Army Base
Oakland 14, California

1. The 9800th TSU-CE Detachment #14, Bomb & Shell Disposal Team was assigned the clearing of the Victorville Bombing Targets, Victorville, California under Surplus Real Estate Directive, South Pacific Division Number: 4892-3 and Los Angeles District Number 2364-3. This directive covers the dedudding of target Numbers: 3, 7, 10, 11, 12, 13, 14, 16, 17, 19 and 20, a total of 7,022 acres. The dedudding of said targets began 20 October 1947 and were completed 24 January 1948.
2. Six laborers, hired through the Los Angeles District Engineers and the personnel of the Detachment made up the searching party. Two Project Engineers were also furnished by the Los Angeles District Engineers.
3. The total man hours, including civilian and Detachment labor, were 7176 hours. The total civilian field cost (salary, per diem and vehicle repairs) was \$7,547.
4. A team made up of one Project Engineer and one Sergeant from the Detachment surveyed and marked the boundaries of each range ahead of the search crew. The other Project Engineer, in conjunction with a Detachment Sergeant, controlled the search crew.
5. It is estimated that there is approximately 840 tons of scrap on subject targets.
6. The method of searching was as it has been in similar reported jobs. However, the immediate target areas were more heavily impacted and a large percentage of the bombs were buried or partially buried necessitating several passes of the search crew and considerable excavating. The excavating was done with non-sparking picks cutting down the danger of setting off a bomb by accidentally digging into one.
7. All blasting was done after the searchers were out of the range or at a later date. The dud bombs were rid of by placing a sufficient size charge of Composition C-3 on them so as to explode the bomb or completely demolish it. After detonation the demolition men checked the surrounding area to see that the object in question had been destroyed.

Reproduced from the holdings of the National Archives
Pacific Southwest Region

8. A list of duds found and destroyed are given below:

- (a) 2,860 Bombs, Practice, M38-A2
- (b) 32 Bombs, Flare, Aircraft, Parachute, M26

9. I believe the 7,022 acres covered by this report to be free from explosive material for the purpose of grazing; mining and/or agricultural purposes.

10. The location of this area is designated by the enclosed map of:

Real Estate
Victorville Army Air Field Bombing Ranges
Drawing No. 65-FP
State: California
County: San Bernardino

JOSEPH P. SAINATO
1st Lt., CE
9800th TSU-CE Det #14
Bomb & Shell Disposal Team
Commanding

CERTIFICATE OF CLEARANCE
VICTORVILLE BOMBING TARGETS NOS. 3, 7, 10, 11, 12, 13, 14, 16, 17, 19, AND 20

22 March 1948

This is to certify that the areas known as Victorville Bombing Targets Nos. ③, 7, 10, 11, 12, 13, 14, 16, 17, 19 and 20, as shown on Real Estate Map of Victorville Army Air Force Bombing Ranges, Drawing No. 65-FF, were completely dedudded during the period from 20 October 1947 to 24 January 1948.

2860 dud practice bombs M38-A2 and 32 dud flare bombs, aircraft parachute #26, were found and destroyed during the course of the dedudding.

To the best of our knowledge and belief, the entire area covered by these 11 bombing targets is clear of all explosive or dangerous material and the land is safe for the purpose of grazing, mining or other agricultural purposes.

B. C. Hedrick
B. C. HEDRICK
Engineer, Civil
Los Angeles District

Joseph P. Sainato
JOSEPH P. SAINATO
1st Lt., C. E.
9800th TSU-CE Det, #14
Bomb & Shell Disposal Team
Commanding

ORDNANCE AND EXPLOSIVES
ARCHIVES SEARCH REPORT
for the former
VICTORVILLE PBR # 13
SAN BERNARDINO COUNTY
LUCERNE VALLEY, CALIFORNIA
OE PROJECT NUMBER J09CA067901

APPENDIX G

REAL ESTATE DOCUMENTS

APPENDIX G

REAL ESTATE DOCUMENTS

TABLE OF CONTENTS

- G-1 Assessor's Map, Book 454, Page 56 - San Bernardino County Section 6 (B-16).
- G-2 Current Land Owners for Victorville PBR # 13 Site (B-17).
- G-3 Map of Cultural Sites at former Victorville PBR # 13 (B-18).



N.1/2, Fractional Sec. 6, T. 3 N., R. 4 E., S.B.B. & M.

Lucerne Valley Union 454-55
 Tax Rate Area
 88031

Victorville #13

42

447
42

447
43

35

N 89° 27' W															
T. 4 N., R. 4 E.															
T. 3 N., R. 4 E.															
18 1.74 AC (10)	17 2.52 AC (9)	16 2.55 AC (8)	15 2.61 AC (7)	14 2.72 AC (6)	13 2.77 AC (5)	12 2.83 AC (4)	11 2.88 AC (3)	10 2.92 AC (12)	9 2.97 AC (11)	8 3.03 AC (10)	7 3.08 AC (9)	6 3.12 AC (8)	5 3.17 AC (7)	4 3.23 AC (6)	3 3.28 AC (5)
19 1.74 AC (11)	20 (18)	21 (28)	22 (27)	23 (26)	24 (25)	25 (24)	26 (23)	27 (13)	28 (22)	29 (23)	30 (24)	31 (25)	32 (19)	33 (26)	34 (44)
50 1.76 AC (12)	49	48	47 (19)	46	45	44	43 (39)	42 (39)	41 (36)	40 (37)	39 (36)	38 (35)	37 (34)	36 (33)	35 (14)
R. 4 E.															
T. 3 N.															
51 1.77 AC (13)	52 (34)	53 (33)	54 (32)	55 (31)	56 (30)	57 (1)	58 (29)	59 (20)	60 (27)	61 (28)	62 (29)	63 (30)	64 (31)	65 (32)	66 (1)
R. 3 E.															
T. 3 N.															
82 1.83 AC (14)	81	80	79	78 (20)	77	76	75	74	73	72	71 (15)	70	69	68	67
83 1.85 AC (15)	84	85	86	87 (21)	88	89	90	91 (16)	92 (52)	93 (47)	94 (48)	95 (50)	96 (51)	97 (49)	98 (3)
114 1.87 AC (16)	113	112	111	110 (22)	109	108	107	106 (57)	105 (56)	104 (46)	103 (55)	102 (45)	101 (53)	100 (54)	99 (17)
115 1.88 AC (17)	116	117	118	119 (2)	120	121	122	123 SEC. 123 (18)	124 (40)	125 (21)	126 (4)	127 (41)	128 (42)	129 (43)	130 (2)
N 87° 39' W															

6 (636.30 AC.)

56

Note-Assessor's Blk. & Lot Numbers Shown in Circles

Assessors Map
 Book 454, Page 55
 San Bernardino County

REVISED
 3/29/48
 6/5/93 GP

June 1960

G-1



S.1/2, Fractional Sec. 6, T. 3 N., R. 4 E., S. B. B. & M.

Lucerne Valley Union
Tax Rate Area
88031

454-56

Victorville #13

Note- All Lots Are 2.5 Acres
Unless Otherwise Shown

55

SEC

6

④ 138 1.90 AC.	137	136	135	134	133	132	131 (636.30 AC)	⑮	⑰	⑰	⑰	7	5 AC.	⑮	5 AC.	⑮
⑤ 139 1.92 AC	140	141	142	143	144	145	146	⑰	⑳	㉑	㉒	㉒	5 AC.	⑳	5 AC.	㉒
⑥ 154 1.93 AC	153	152	151	150	149	148	147	㉒	㉓	㉔	㉕	㉕	5 AC.	㉓	5 AC.	㉕
⑦ 155 1.95 AC	156	157	158	159	160	161	162	⑥	㉗	㉘	⑤	⑤	2	④	⑮	③
⑧ 170 1.97 AC	169	168	167	166	165	164	163	⑧	⑪	⑩	⑨	⑨	5 AC.	④	5 AC.	④
⑨ 171 1.99 AC	172	173	174	175	176	177	178	5 AC.	5 AC.	5 AC.	5 AC.	5 AC.	5 AC.	5 AC.	5 AC.	5 AC.
⑩ 186 2.00 AC	185	184	183	182	181	180	179	5 AC.	5 AC.	5 AC.	5 AC.	5 AC.	5 AC.	5 AC.	5 AC.	5 AC.
⑪ 187 2.02 AC	188	189	190	191	192	193	194	5 AC.	5 AC.	5 AC.	5 AC.	5 AC.	5 AC.	5 AC.	5 AC.	5 AC.

447
54

T. 3 N.,
R. 4 E.,
S. B. B. & M.

562

561

49

34

Note-Assessor's Blk. 8 Lot
Numbers Shown in Circles

Assessors Map
Book 454, Page 56
San Bernardino County

REVISED
3/29/88
6/9/93 GP

VICTORVILLE PBR #13 CURRENT OWNERSHIP

W 1/2	N 1/2	T3N	R4E	Sec 6	454-552-01 to 34	Gov't Land
E 1/2					454-553-01,-02	Gov't Land
					-03	Hancock, B.
					-04	Matijevich, J.
					-05	Gov't Land
					-06	Gov't Land
					-07	Gov't Land
					-08	Haywood, R.
					-09	Wu, K-W
					-10	Gov't Land
					-11	Gov't Land
					-12	Gov't Land
					-13	Gov't Land
					-14	Brown, M.
					-15	Gov't Land
					-16	Gov't Land
					-17	Gov't Land
					-18	Gov't Land
					-19	Aardema, A.
					-20	Whitehead, A.
					-21	McMillen, D.
					-22	Kaplus, S.
					-23	Kaplus, S.
					-24	Kaplus, S.
					-25 thru	
					-36	Gov't Land
					-37	Estes, B.
					-38	Gov't Land
					-39	Gov't Land
					-40	Hutton, N.
					-41	Wu, K-W
					-42	Caskey, K
					-43	Gov't Land
					-44	Gov't Land
					-45	Arduser, M.
					-46	Gov't Land
					-47	Gov't Land
					-48	Jennings, J.
					-49	Nolan, R.
					-50	Beatie, D.
					-51	Gov't Land
					-52	Peterson, W.
					-53	Tiffany, V.
					-54 thru	
					-57	Gov't Land

W 1/2	S 1/2	T3N	R4E	Sec 6	454-562-01, -02	Gov't Land
					-03	Halopoff, P.
					-04	Gov't Land
					-05	Gov't Land
					-06	Weber, M.
					-07	Weber, L.
					-08	Shortina, A.
					-09	Hershberger, T.
					-10	Dumond, T.
					-11	McDonough, R.
					-12 thru	
					-15	Gov't Land
					-16	---
					-17	Siverts, V.
					-18	Gov't Land
					-19	Buchert, H.
					-20	Booth, W.
					-21	Fallin, A.
					-22	Janer, W.
					-23	Bennet, B.
					-24	Bennet, B.
					-25	Gov't Land
					-26	Robert, P.
					-27	Gov't Land
					-28	Dickman, N.
					-29	Hershberger, T.
					-30	Gov't Land
					-31	Gov't Land
					-32	Johnson, T.
					-33	H.W. Rutherford Limited Partnership
					-34	Rayburn, C.
					-35 thru	
					-37	Gov't Land
					-38	Bennet, B.
					-39	Steffen, M.
					-40	Gov't Land
					-41	Bennet, B.
					-42	Janer, A.
					-43	Steffen, M.
					-44	Pesicka, N.
					-45 thru	
					-47	Gov't Land
					-48	Johnson, J.
					-49	Howell, D.
					-50	Kandert, R.

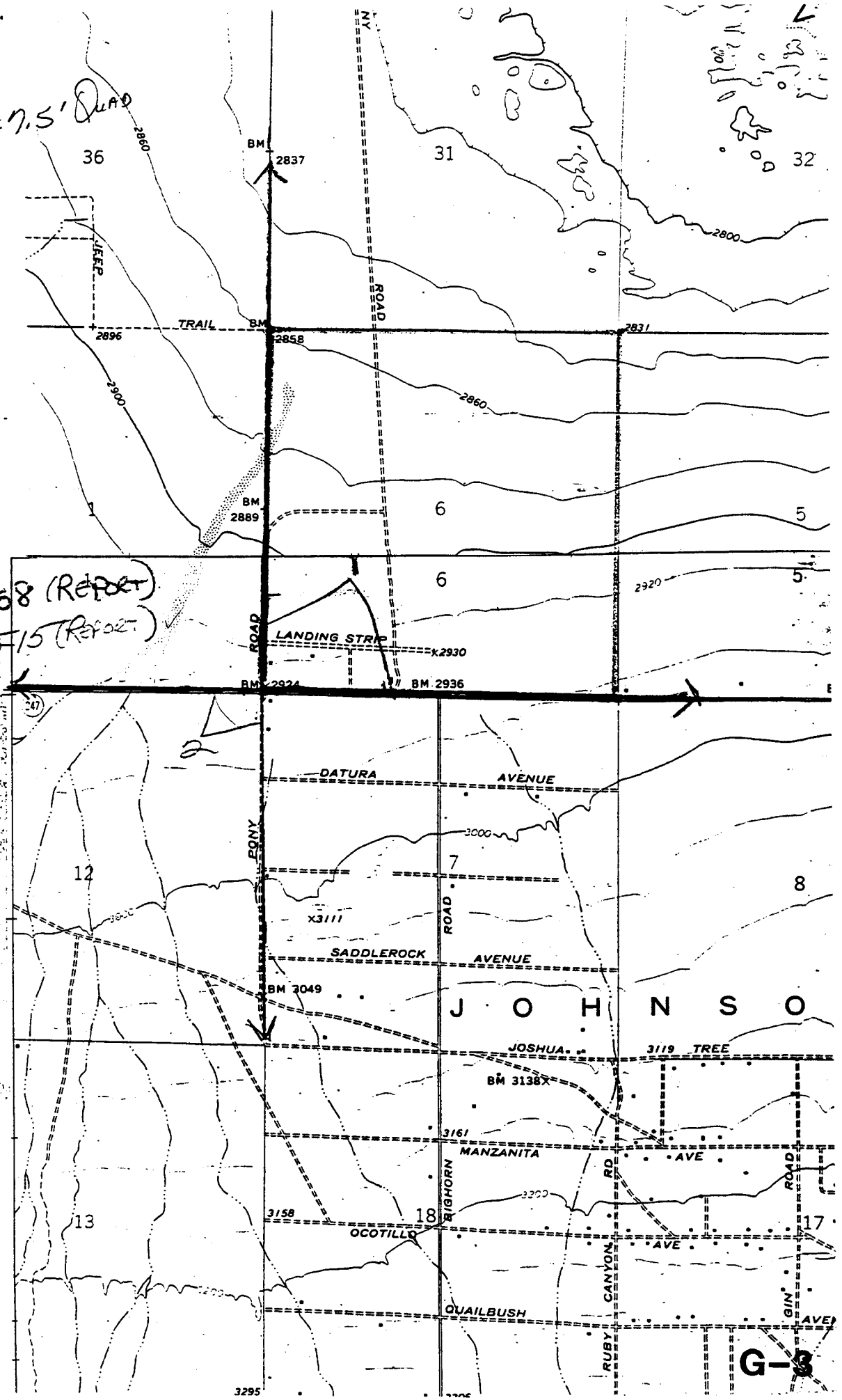
E 1/2	S 1/2	T3N	R4E	Sec 6	454-561-01	Gov't Land
					-02	Crowell, E.
					-03	Dolan, W.
					-04	Verclun, A.
					-05	Neugebauer, D.
					-06	Kimble, C.
					-07	O Pacic, M.
					-08	Hartwick, M.
					-09	Redfern, W.
					-10	Lewis, D.
					-11	Su, A.
					-12	---
					-13 thru	
					-17	Gov't Land
					-18	Hutton, S.
					-19 thru	
					-27	Gov't Land
					-28	Beatie, D.
					-29	Pratt, G.
					-30	Pratt, V.
					-31 thru	
					-34	Gov't Land
					-35	Mitchell, R.
					-36 thru	
					-49	Gov't Land

MEVILLE LAKE 7.5' Quad
USGS 1301

1 - NADB 1062158 (Report)
2 - NADB 1062515 (Report)

NO SITES
PBE # 13
T 3N R 4E
Sec 6

BIGHORN CANYON
7.5' Quad
USGS 1304



GIS

ARCHIVES SEARCH REPORT
for the former
VICTORVILLE PBR # 13
SAN BERNARDINO COUNTY
LUCERNE VALLEY, CALIFORNIA
OE PROJECT NUMBER J09CA067901

APPENDIX H

NEWSPAPERS/JOURNALS
(not used)

ORDNANCE AND EXPLOSIVES
ARCHIVES SEARCH REPORT
for the former
VICTORVILLE PBR # 13
SAN BERNARDINO COUNTY
LUCERNE VALLEY, CALIFORNIA
OE PROJECT NUMBER J09CA067901

APPENDIX I

INTERVIEWS

APPENDIX I

INTERVIEWS

TABLE OF CONTENTS

I-1	SFC Marshall White
I-2	California Highway Patrol Office Representative
I-3	Sheriff's Office, Victorville
I-4	Edward Laska
I-5	Wayne Fowlie

CONVERSATION RECORD

TIME: 1400 hours

Date: 18 April 1996

TYPE

VISIT

CONFERENCE

TELEPHONE

INCOMING

OUTGOING

Person Contacted:

Organization:

Telephone Number:

California Highway
Patrol

Subject: Interview related to Present-day OE Contamination Assessment

SUMMARY: The California Highway Patrol representative with whom the SI team spoke had no knowledge of OE discoveries at the FUDS. The representative was certain the Victorville office has never responded to any OE discoveries at the FUDS.

ACTION REQUIRED: None

ACTION TAKEN: None

INTERVIEWER:

ORGANIZATION:

TELEPHONE NUMBER:

W. Akins

USATCES, SIOAC-ESL

(815) 272-8538

SIGNATURE:

TITLE:

DATE:

QASAS

3 June 1996

CONVERSATION RECORD

TIME: 1400 hours

Date: 18 April 1996

TYPE

VISIT

CONFERENCE

TELEPHONE

INCOMING

OUTGOING

Person Contacted:

Organization:

Telephone Number:

Sheriff's Office,
Victorville

Subject: Interview related to Present-day OE Contamination Assessment

SUMMARY: The Sheriff's Office representative with whom the SI team spoke had no knowledge of OE discoveries at the FUDS. The representative was certain the Victorville office has never responded to any OE discoveries at the FUDS.

ACTION REQUIRED: None

ACTION TAKEN: None

INTERVIEWER:

ORGANIZATION:

TELEPHONE NUMBER:

W. Akins

USATCES, SIOAC-ESL

(815) 272-8538

SIGNATURE:

TITLE:

DATE:

QASAS

3 June 1996

CONVERSATION RECORD

TIME: 1030 hours

DATE: 20 April 1996

TYPE

VISIT

CONFERENCE

TELEPHONE

INCOMING

OUTGOING

Person Contacted:

Organization:

Telephone Number:

Edward Laska

Civilian

(619) 242-5746

Subject: Interview related to Present-day OE Contamination Assessment

SUMMARY: Mr. Edward Laska was stationed at Victorville in 1943-1945. He was involved in the tear down and preservation of aircraft. He stated that he knew of the bombing ranges located around Victorville, but did not know of their exact location nor the exact purpose of each target. When asked specifically about PBR's 1, 13, or Y he did not know any details about any of the targets.

Mr. Laska was familiar with present-day active ranges located in the Cuttieback region. (This is the area that is used by the Marine Corps at Twenty Nine Palms, California.)

Mr. Laska had no knowledge of any ammunition items that might have been found on the subject targets nor did he know what type of munitions might have been used on the ranges.

ACTION REQUIRED: None

ACTION TAKEN: None

INTERVIEWER:

ORGANIZATION:

TELEPHONE:

W. Akins

USATCES, SIOAC-ESL
Savanna, IL

(815) 273-8538

SIGNATURE:

TITLE:

DATE:

QASAS

3 June 1996

CONVERSATION RECORD

TIME: 1500 hours

DATE: 20 April 1996

TYPE

VISIT

CONFERENCE

TELEPHONE

INCOMING

OUTGOING

Person Contacted:

Organization:

Telephone Number:

Wayne Fowlie

Civilian

(619) 240-2111

Subject: Interview related to Present-day OE Contamination Assessment

SUMMARY: Mr. Wayne Fowlie was not involved with ranges and target associated with Victorville. He had no knowledge of PBR 1, 13, or Y.

Mr. Fowlie was a rocket engineer working at China Lake. He was involved in the Tiny Tim rocket.

Mr. Fowlie knew of no ammunition items, demolition ranges, or targets relevant to this investigation.

ACTION REQUIRED: None

ACTION TAKEN: None

INTERVIEWER:

ORGANIZATION:

TELEPHONE:

W. Akins

USATCES, SIOAC-ESL
Savanna, IL

(815) 273-8538

SIGNATURE:

TITLE:

DATE:

QASAS

3 June 1996

ORDNANCE AND EXPLOSIVES
ARCHIVES SEARCH REPORT
for the former
VICTORVILLE PBR # 13
SAN BERNARDINO COUNTY
LUCERNE VALLEY, CALIFORNIA
OE PROJECT NUMBER J09CA067901

APPENDIX J
PRESENT SITE PHOTOGRAPHS

APPENDIX J

PRESENT SITE PHOTOGRAPHS

TABLE OF CONTENTS

- J-1 Faint traces of asphalt target ring visible in foreground.
- J-2 View of a pole, which denotes the center of FUDS.
- J-3 One of many remnants of spotting charges located in Area A.
- J-4 View of a typical spotting charge remnant discovered in Area B.
- J-5 Remnant of spotting charge used in M38A2 practice bomb - discovered in Area A.
- J-6 View of some military-related metal discovered in Area A.
- J-7 Northerly view of road intersecting site.
- J-8 Western view from intersecting road, showing house in the southwestern corner of site.



J-1 Faint traces of asphalt target ring visible in foreground.



J-2 Pole, denoting the center of the site.



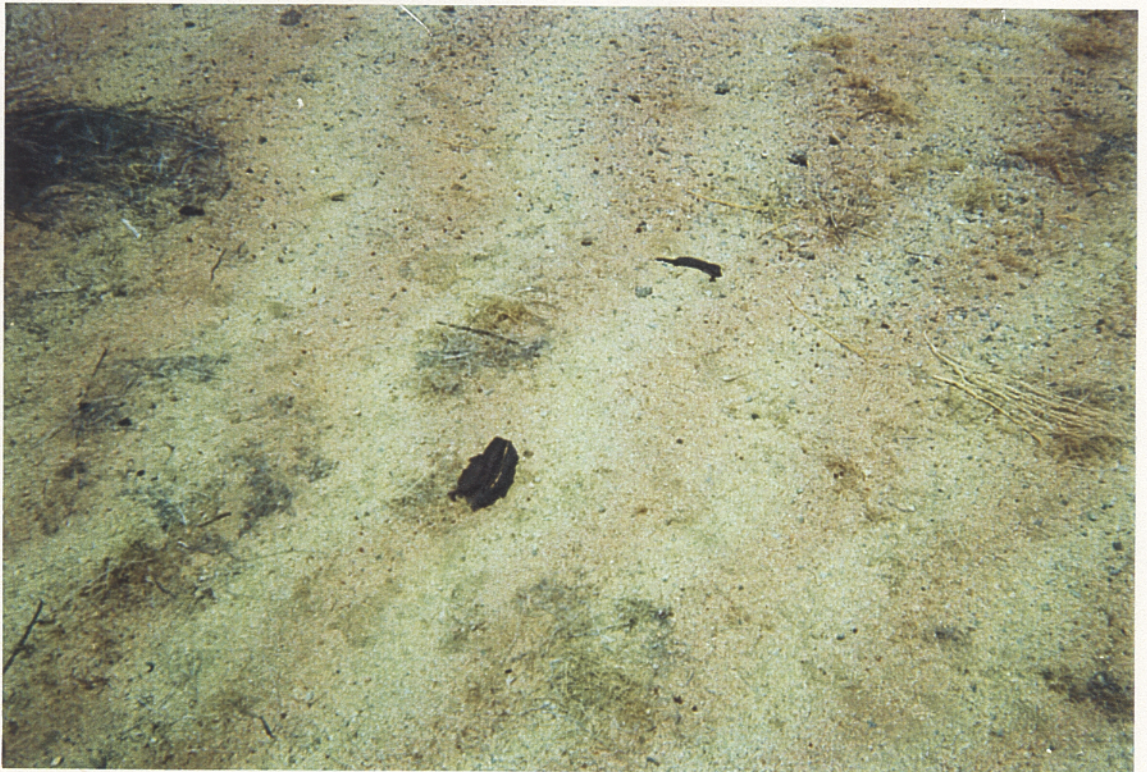
J-3 A typical spotting charge remnant -
one of hundreds in Area A



J-4 Remnant of spotting charge located on
the surface in Area B



J-5 Remnant of spotting charge used in the M38A2 practice bomb - discovered on surface in Area A.



J-6 View of military-related metal on the surface in Area A.



J-7 Northerly view of road intersecting site.



J-8 Western view from intersecting road, showing house in the southwestern corner of site.

AMMUNITION AND EXPLOSIVES
ARCHIVES SEARCH REPORT
for the former
VICTORVILLE PBR # 13
SAN BERNARDINO COUNTY
LUCERNE VALLEY, CALIFORNIA
OE PROJECT NUMBER J09CA067901

APPENDIX K
HISTORICAL PHOTOGRAPHS

APPENDIX K

HISTORICAL PHOTOGRAPHS

TABLE OF CONTENTS

- K-1 Aerial photograph of Victorville PBR # 13, dated
16 August 1989 (B-19).
- K-2 Aerial photograph of Victorville PBR #13, (undated)
NAPP 1837-014 (B-20).

NAPP

1837-013

8-16-89

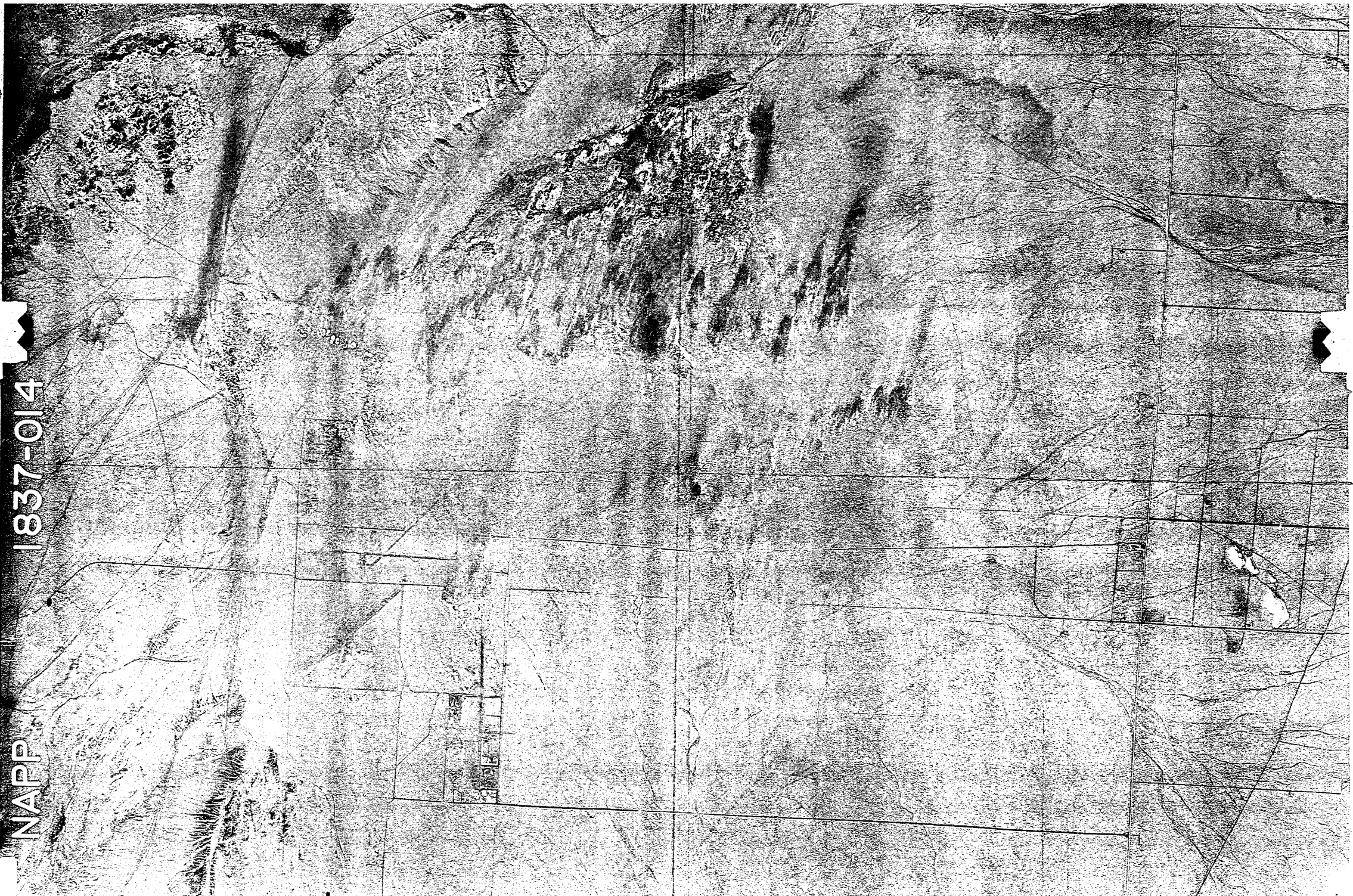


K-1

21-0

NAPP

1837-014



K-2

ORDNANCE AND EXPLOSIVES
ARCHIVES SEARCH REPORT
for the former
VICTORVILLE PBR # 13
SAN BERNARDINO COUNTY
LUCERNE VALLEY, CALIFORNIA
OE PROJECT NUMBER J09CA067901

APPENDIX L
REFERENCE MAPS/DRAWINGS
(not used)

ORDNANCE AND EXPLOSIVES
ARCHIVES SEARCH REPORT
for the former
VICTORVILLE PBR # 13
SAN BERNARDINO COUNTY
LUCERNE VALLEY, CALIFORNIA
OE PROJECT NUMBER J09CA067901

APPENDIX M

ARCHIVES SEARCH REPORT CORRESPONDENCE

(not used)

ORDNANCE AND EXPLOSIVES
ARCHIVES SEARCH REPORT
for the former
VICTORVILLE PBR # 13
SAN BERNARDINO COUNTY
LUCERNE VALLEY, CALIFORNIA
OE PROJECT NUMBER J09CA067901

APPENDIX N

REPORT DISTRIBUTION LIST

APPENDIX N

REPORT DISTRIBUTION LIST

EXTERNAL	NUMBER OF COPIES		
	I	II	III
Commander, U.S. Army Engineering & Support Center, Huntsville ATTN: CEHNC-OE-AI (Mardis) P. O. Box 1600 Huntsville, AL 35807-4301	2	-	-
Commander, U.S. Army Corps of Engineers North Central Division ATTN: CENCD-PE-ED-TE 111 North Canal Street, 12th Floor Chicago, IL 60606-7205	1	-	-
Commander, U.S. Army Defense Ammunition Center and School ATTN: SIOAC-ES Savanna, IL 61074-9639	3	-	-
Commander, U.S. Army Health Clinic ATTN: MCXP-RIA (Platt) Rock Island Arsenal Rock Island, IL 61201	1	-	-
Commander, U.S. Army Corps of Engineers Los Angeles District ATTN: CESPL-ED-MI (Boghossian) 911 Wilshire Boulevard P. O. Box 2711 Los Angeles, CA 90053-2325	2	-	-

- I - Final Report
- II - Findings Report
- III - Routed Final Report

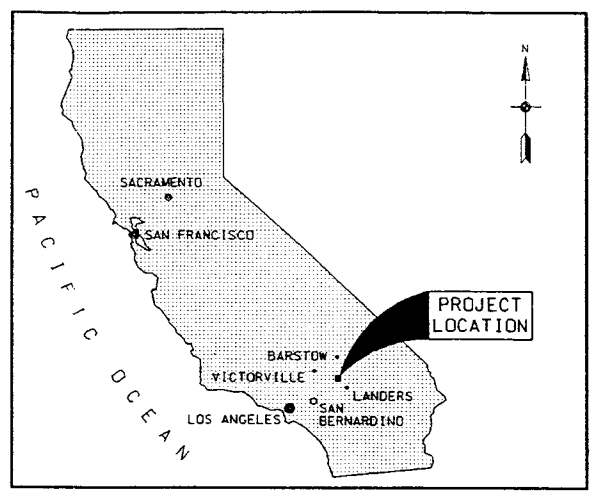
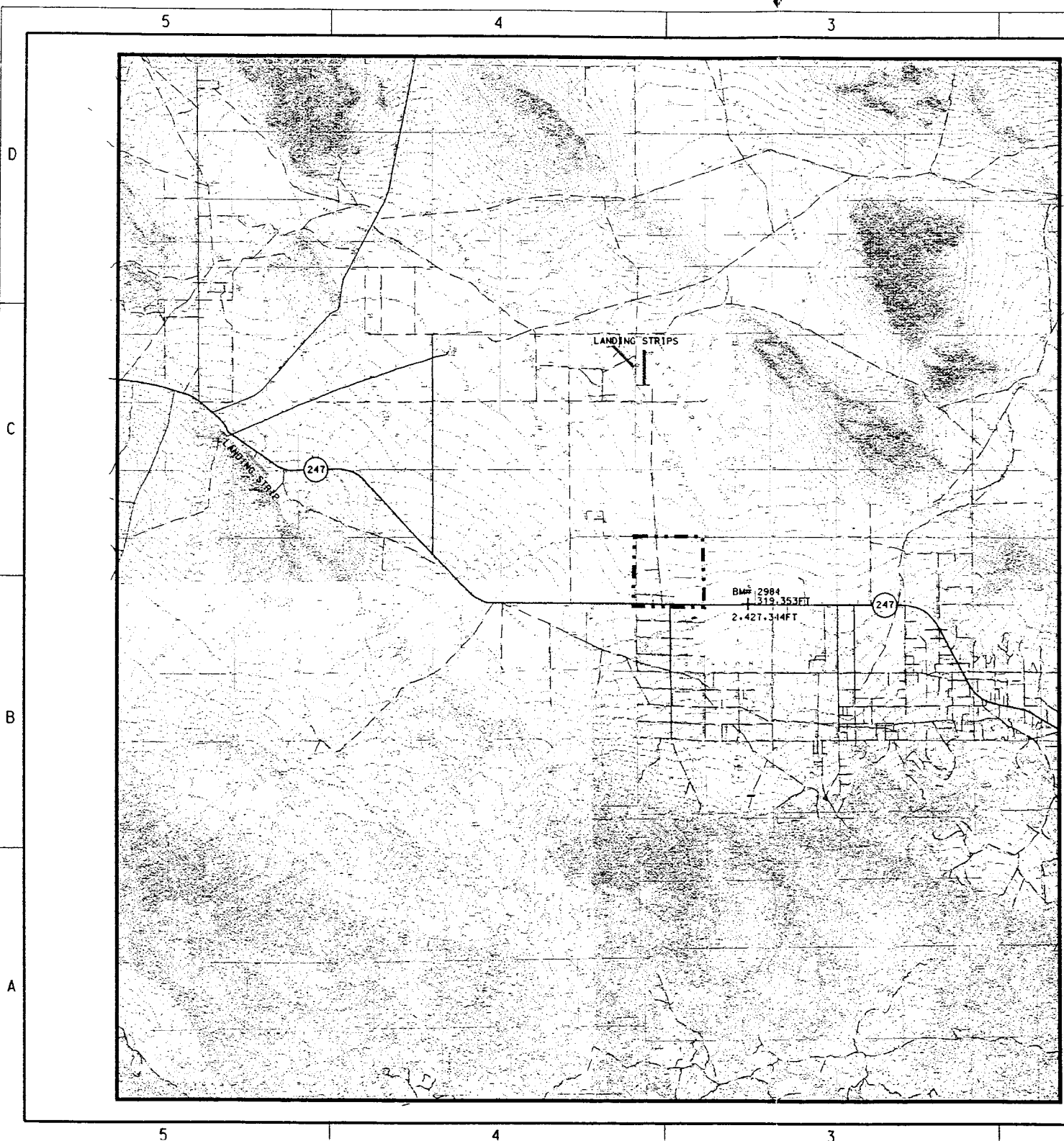
APPENDIX N
REPORT DISTRIBUTION LIST (con't)

INTERNAL	NUMBER OF COPIES		
	I	II	III
Commander, U.S. Army Corps of Engineers Rock Island District P. O. Box 2004 Rock Island, IL 61201-2004			
ATTN: CENCR-			
ED	-	-	1
ED-D	-	-	1
ED-DO	3	-	-
ED-G	-	-	1
ED-H	-	-	1
SO	-	-	1
PD	-	-	1
RE	-	-	1

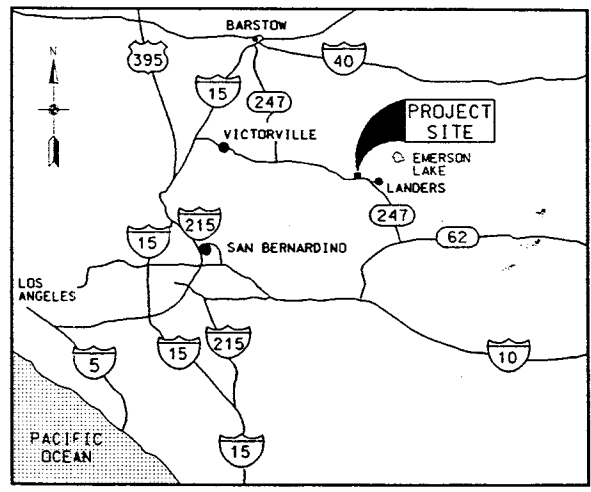
I - Final Report
II - Findings Report
III - Routed Final Report

ORDNANCE AND EXPLOSIVES
ARCHIVES SEARCH REPORT
for the former
VICTORVILLE PBR # 13
SAN BERNARDINO COUNTY
LUCERNE VALLEY, CALIFORNIA
OE PROJECT NUMBER J09CA067901

REPORT PLATES



STATE MAP OF CALIFORNIA



VICINITY MAP

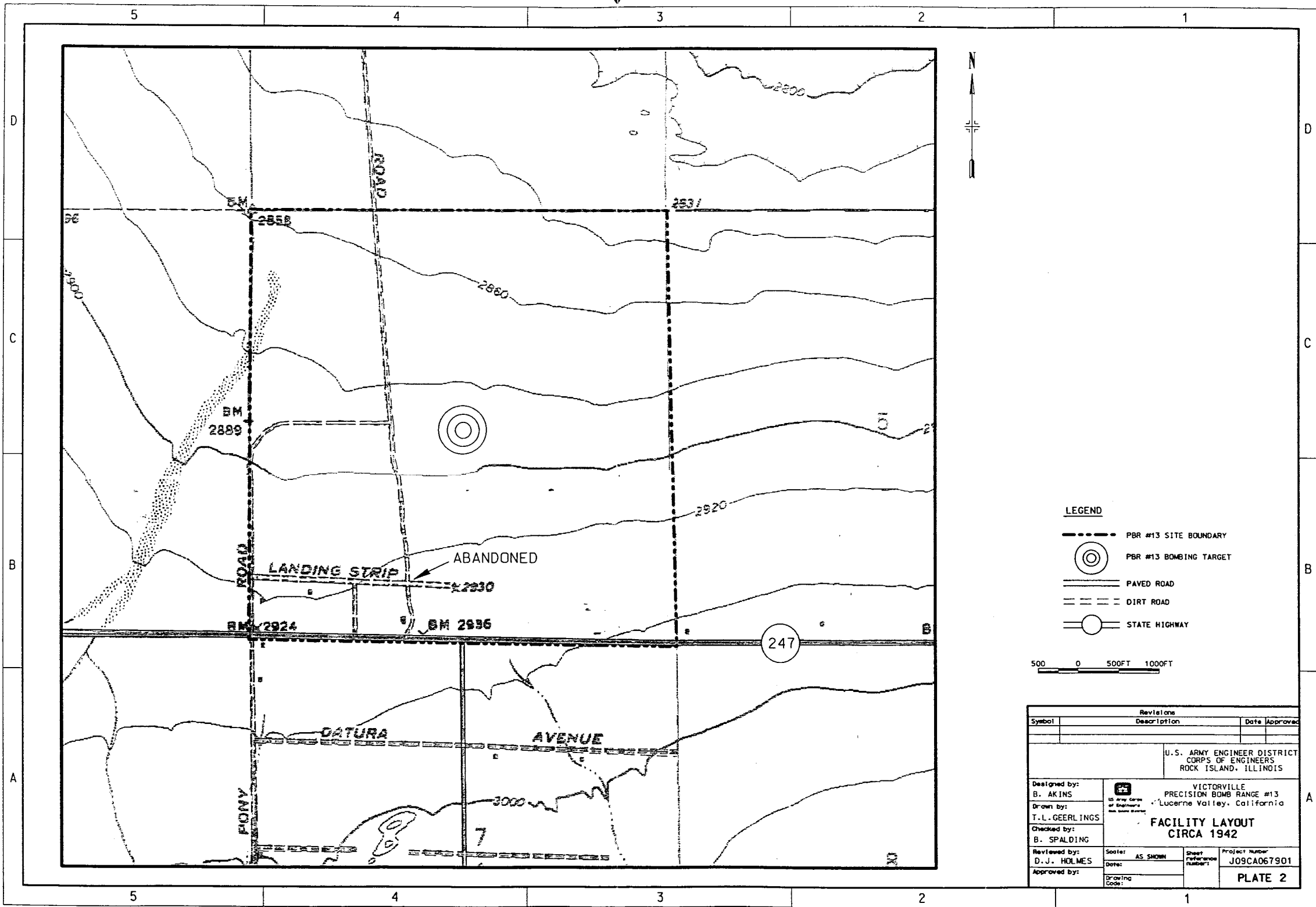
LEGEND

- PBR #13 SITE BOUNDARY
- PAVED ROAD
- - - DIRT ROAD
- STATE HIGHWAY



Revisions			
Symbol	Description	Date Approved	
U.S. ARMY ENGINEER DISTRICT CORPS OF ENGINEERS ROCK ISLAND, ILLINOIS			
Designed by: B. AKINS	 T.L. GEERLINGS Professional Engineer No. 00000000	VICTORVILLE PRECISION BOMB RANGE #13 Lucerne Valley, California	
Drawn by: T.L. GEERLINGS		SITE MAP	
Checked by: B. SPALDING	Scale: AS SHOWN	Sheet Reference Number:	Project Number J09CA067901
Reviewed by: D.J. HOLMES	Date:	Drawing Code:	
Approved by:	PLATE 1		

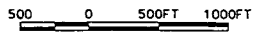
12-AUG-1996 10:34
 et:\projects\p206\p206sp11.dgn



19-AUG-1996 15:15
 e:\proj\ect\ep206\p12.dgn

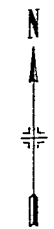
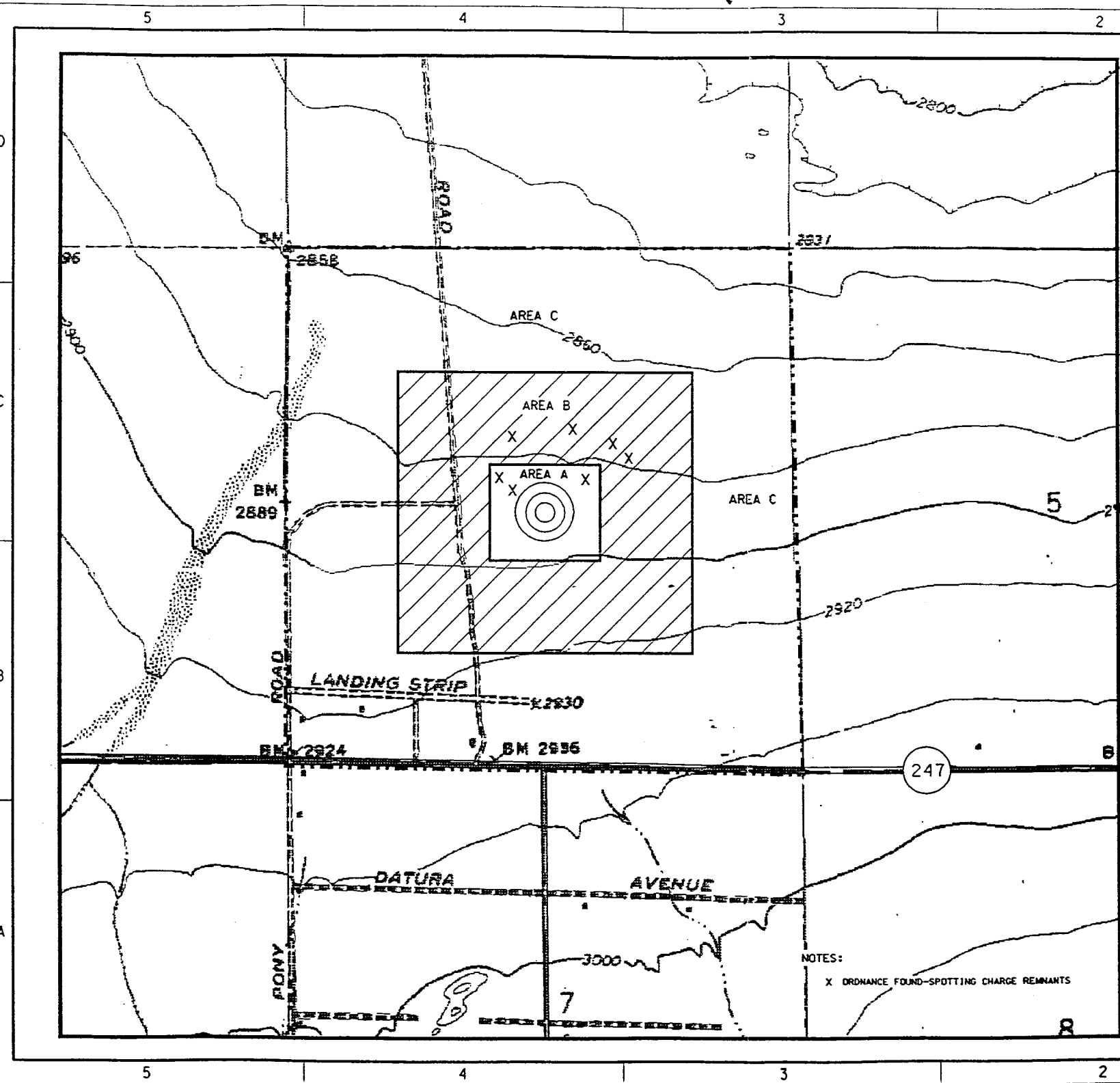
LEGEND

- PBR #13 SITE BOUNDARY
- ⊙ PBR #13 BOMBING TARGET
- ==== PAVED ROAD
- - - - DIRT ROAD
- STATE HIGHWAY



Revisions		Date		Approved	
Symbol	Description				
U.S. ARMY ENGINEER DISTRICT CORPS OF ENGINEERS ROCK ISLAND, ILLINOIS					
Designed by: B. AKINS		VICTORVILLE PRECISION BOMB RANGE #13 Lucerne Valley, California			
Drawn by: T.-L. GEERLINGS		FACILITY LAYOUT CIRCA 1942			
Checked by: B. SPALDING		Scale: AS SHOWN		Project Number: J09CA067901	
Reviewed by: D. J. HOLMES		Date:		Sheet Reference Number: PLATE 2	
Approved by:		Drawing Code:		Drawing Code:	

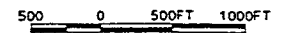
12-AUG-1986 10:49
 el:\proj\ao\land\206\ep\206p13.dgn



SUMMARY OF AREAS			
AREA	FORMER USAGE	OE PRESENCE	ACREAGE
	A BOMB TARGET	CONFIRMED	20*
	B TARGET BUFFER	CONFIRMED	150*
	C REMAINING LAND	UNCONTAMINATED	470*
ACREAGE IS APPROXIMATE			TOTAL ACREAGE 640*

LEGEND

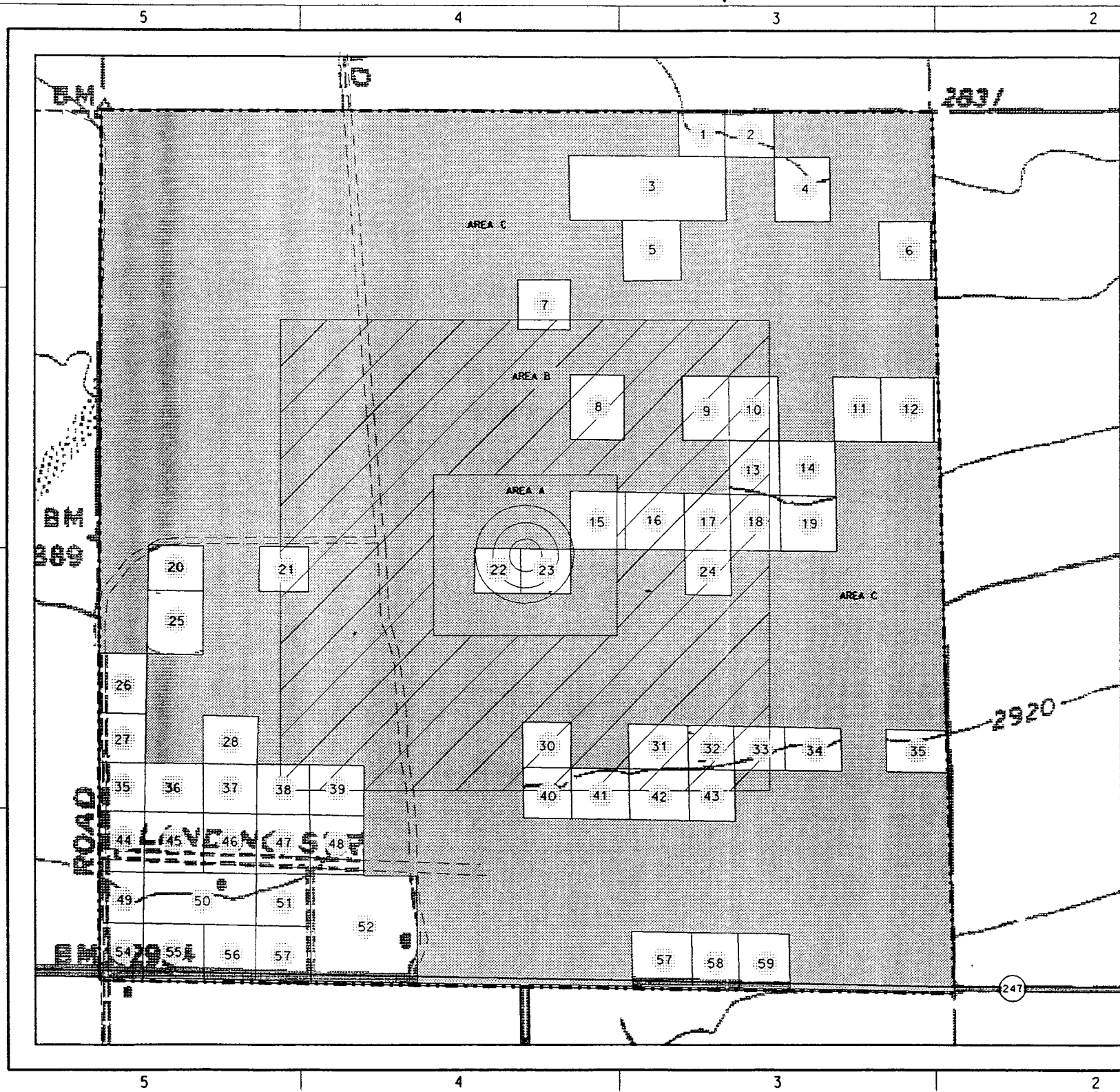
- PBR #13 SITE BOUNDARY
- PAVED ROAD
- DIRT ROAD
- STATE HIGHWAY



NOTES:
 X ORDNANCE FOUND-SPOTTING CHARGE REMNANTS

Revisions		
Symbol	Description	Date Approved
U.S. ARMY ENGINEER DISTRICT CORPS OF ENGINEERS ROCK ISLAND, ILLINOIS		
Designed by: B. AKINS		VICTORVILLE PRECISION BOMB RANGE #13 Lucerne Valley, California
Drawn by: T.L. GEERLINGS		OE PROJECT AREAS
Checked by: B. SPALDING	Scale: AS SHOWN	Sheet Reference: Number:
Reviewed by: D.J. HOLMES	Drawing Code:	Project Number: J09CA067901
Approved by:		PLATE 3

12-AUG-1996 10:52
 et:\proj\fac\map\206\p14.dgn



PARCEL OWNER		PARCEL OWNER	
4	AARDEMA, A.	30	KIMBLE, C.
45	ARJUSER, M.	42	LEWIS, D.
10, 31	BEATE, D.	17	MATLIEVICH, J.
52	BENNET, B.	54	MCDONOUGH, R.
56	BOOTH, W.	16	MCMILLEN, D.
6	BROWN, W.	59	MITCHELL, R.
20	BUCHERT, H.	32	NEUGEBAUER, D.
19	CASKEY, K.	11	NOLAN, R.
33	CROWELL, E.	24	O'PACIC, M.
28	DICKMAN, N.	39	PESICKA, N.
35	DOLAN, W.	8	PETERSON, W.
49	DUMOND, T.	57	PRATT, G.
5	ESTES, B.	58	PRATT, V.
55	FALLEN, A.	48	RAYBURN, C.
21	HALOPOFF, P.	43	REDFERN, W.
12	HANCOCK, B.	25	ROBERT, P.
40	HARTWICK, M.	46	RUTHERFORD, H.W.
2	HAYWOOD, R.	35	SHORTINA, A.
22, 44	HERSHBERGER, T.	45	SIVERTS, V.
37	HOWELL, D.	50	STEFFEN, M.
15	HUTTON, N.	41	SU, A.
23	HUTTON, S.	14	TIFFANY, V.
51	JANER, A.	27	WEBER, L.
57	JANER, W.	26	WEBER, M.
9	JENNINGS, J.	7	WHITEHEAD, A.
38	JOHNSON, J.	34	VERCLIN, A.
47	JOHNSON, T.	1, 18	WU, K-W.
36	KANDERT, R.		
3	KAPLUS, S.		

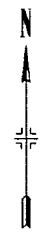
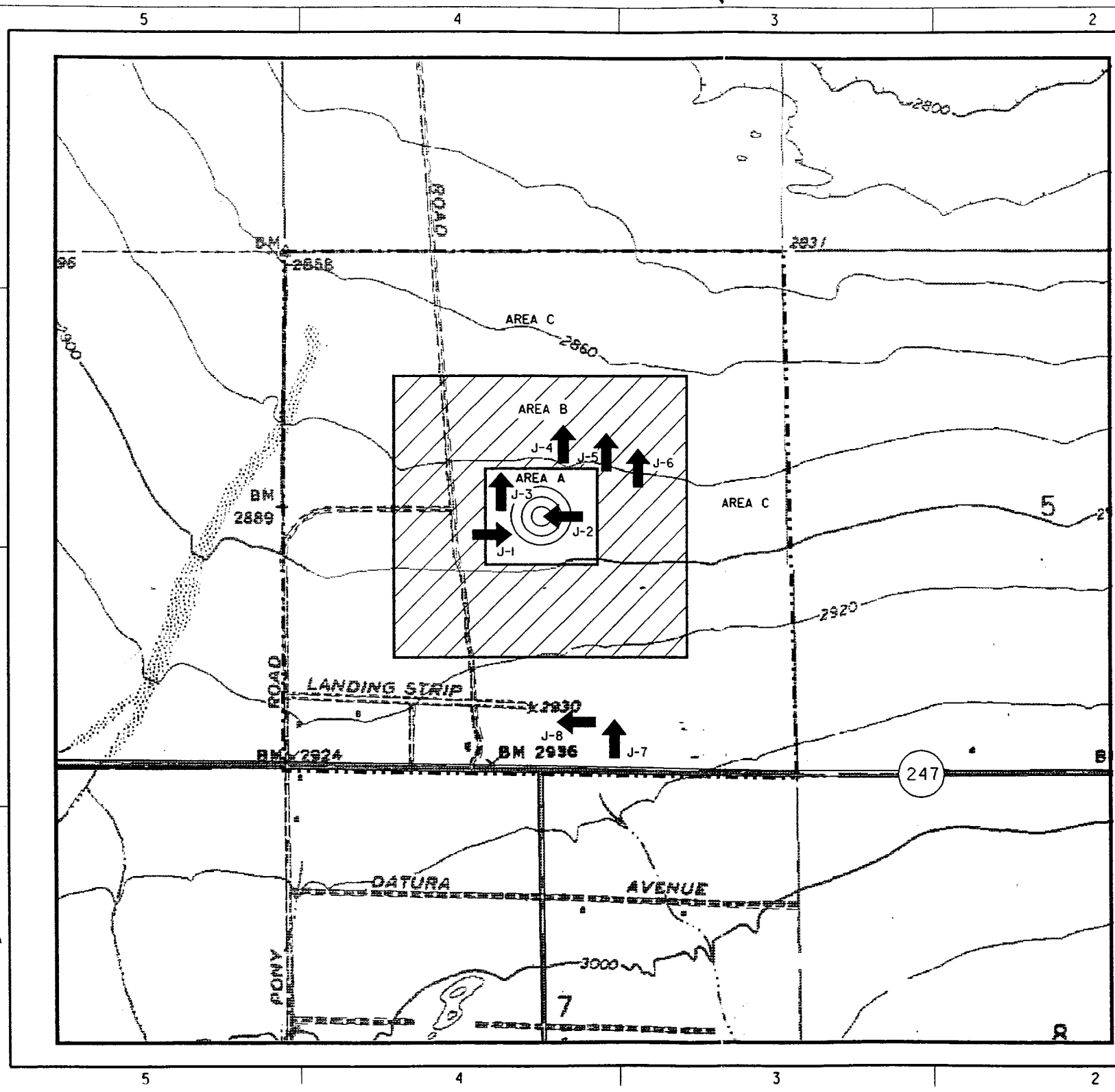
ALL REMAINING LAND OWNED BY U.S. GOVERNMENT

- LEGEND**
- PBR #13 SITE BOUNDARY
 - PAVED ROAD
 - DIRT ROAD
 - STATE HIGHWAY



Revisions		
Symbol	Description	Date Approved
U.S. ARMY ENGINEER DISTRICT CORPS OF ENGINEERS ROCK ISLAND, ILLINOIS		
Designed by: B. AKINS	 VICTORVILLE PRECISION BOMB RANGE #13 Lucerne Valley, California	CURRENT OWNERSHIP
Drawn by: T.L. GEERLINGS		
Checked by: B. SPALDING	Scale: AS SHOWN	Sheet Reference Number: J09CA067901
Reviewed by: D.J. HOLMES	Date:	Project Number: J09CA067901
Approved by:	Drawing Code:	PLATE 4

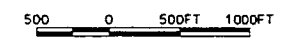
12-AUG-1996 10:459
 61 apr 01 ea te adp 206 wdp 206 p 15 . dgn



SUMMARY OF AREAS			
AREA	FORMER USAGE	QE PRESENCE	ACREAGE
	A BOMB TARGET	CONFIRMED	20*
	B TARGET BUFFER	CONFIRMED	150*
	C REMAINING LAND	UNCONTAMINATED	470*
ACREAGE IS APPROXIMATE		TOTAL ACREAGE	640*

LEGEND

- PBR #13 SITE BOUNDARY
- PAVED ROAD
- DIRT ROAD
- STATE HIGHWAY
- PHOTO LOCATION AND DIRECTION



Revisions		Date Approved	
Symbol	Description		
U.S. ARMY ENGINEER DISTRICT CORPS OF ENGINEERS ROCK ISLAND, ILLINOIS			
Designed by: B. AKINS		 VICTORVILLE PRECISION BOMB RANGE #13 Lucerne Valley, California	
Drawn by: T. L. GEERLINGS			
Checked by: B. SPALDING		PHOTO LOCATIONS	
Reviewed by: D. J. HOLMES	Scales: AS SHOWN	Sheet Reference Number:	Project Number: J09CA067901
Approved by:	Drawing Code:	PLATE 5	