

600.914 (San Diego) 116 325

REPORT OF COMPLETED WORKS - SEACOAST FORTIFICATIONS
(Batteries)

HARBOR DEFENSES OF SAN DIEGO
FORT ROSECRANS **EMORY.**
BATTERY (CONSTR. NO.) 134
Caliber 16-INCH

SP

No. of guns 2
Carriage BARBETTE

~~CONFIDENTIAL~~

Part I

Corrected to 7 December 1944

116325

GENERAL:

Battery commenced: 27 March 1943
Battery completed: 21 February 1944 (Curtailed status)
Date of transfer: 11 November 1944 (curtailed status)
Cost to date of transfer: \$1,044,907.29 (Curtailed status)
Materials of construction: Reinforced concrete
Battery new or modernized: New
Trunnion elevation in battery: None installed (34.0-Top
of firing platforms)
Datum plane: Mean Lower Low Water

UTILITIES:

WATER SUPPLY

Source of: California Water & Telephone Company
Alternate source: None
Size of main: 6-inch

SEWER:

Connected to sewer: No
Type of disposal: Septic tank
Type of latrine: Syphon-jet

"
" UTILITIES: (Contd.)
" ELECTRIC POWER
"* Sources of: Commercial power (for minimum lighting)
" Procured & installed by OCE
" Characteristics: Voltage 120/240 AC 1 - phase
" Number of units and capacity: None installed
" Max. K.W. required for utilities: 8 KW (lighting only)
" Max. K.W. required for nonbattle conditions: None
" * Commercial power provided: Yes Capacity: 10 KW
" Auxiliary power unit provided: No
" Type of lighting fixtures: Direct
" Dehumidifying unit: None installed
" Rooms wet or dry: Dry
" How ventilated: 15" dia. ventilator shaft (for latrine only)
" How heated: Not heated
"
" DATA TRANSMISSION:
" Type: None
"
" REMARKS:
" Construction curtailed by directive O.C.E. 26 Nov. 1943,
" File C. of E. 662 (Western Defense Command) SPEKM CM
" 69618, subj: "Curtailement of Seacoast Battery Program."
"

ARMAMENT

Emplacement #	Guns										Carriages	
	Number	Cal	Length	Model	Serial No.	Manufacturer	Mounted	Type	Model	Serial No.	Manufacturer	Motor
"	NO ARMAMENT INSTALLED (Cancelled by War Department)											
"												
"												
"												

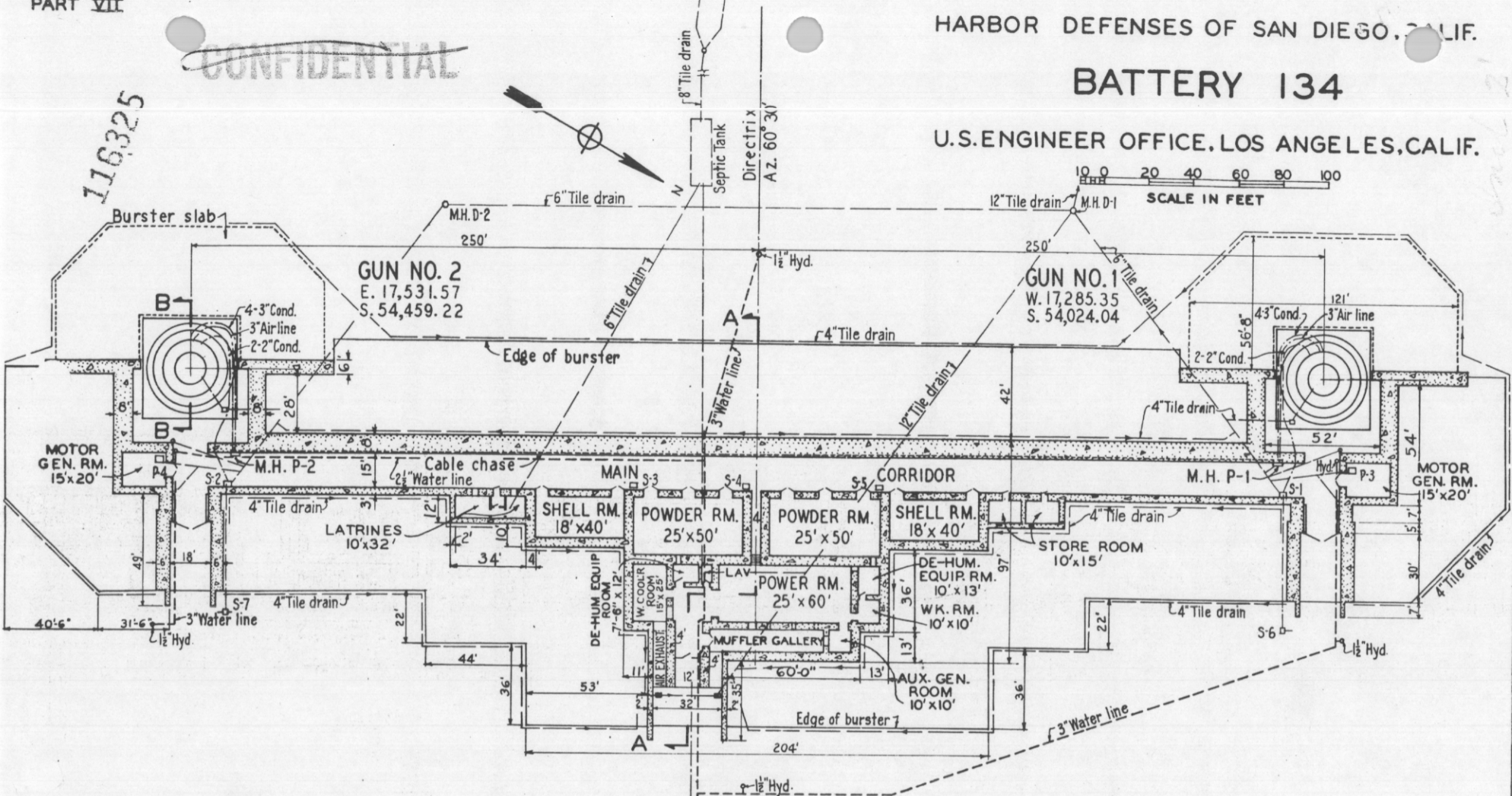
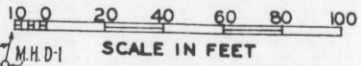
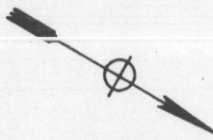
~~CONFIDENTIAL~~

~~CONFIDENTIAL~~

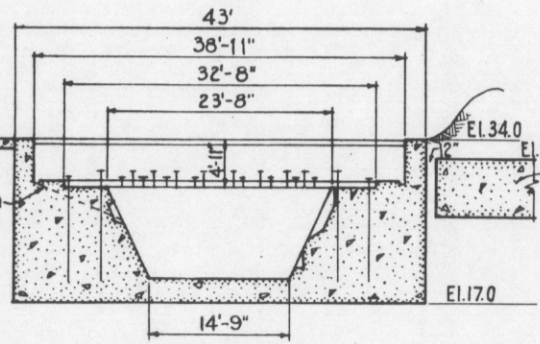
BATTERY 134

U.S. ENGINEER OFFICE, LOS ANGELES, CALIF.

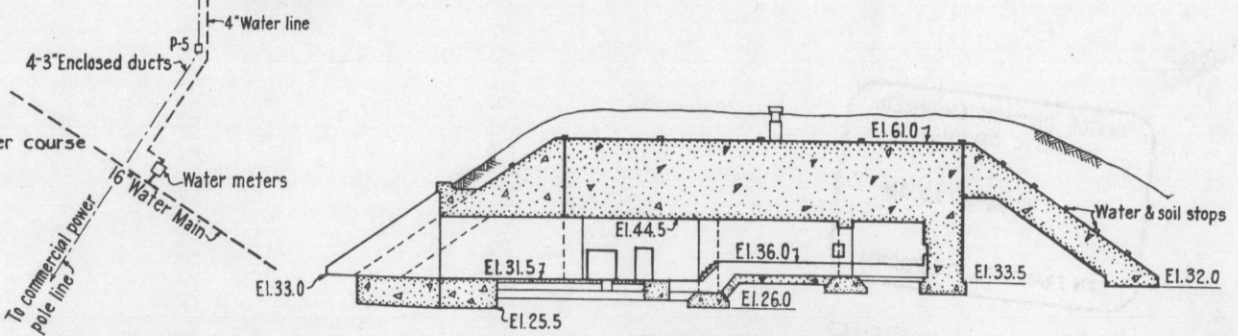
116325



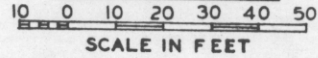
PLAN



SECTION B-B



SECTION A-A



~~CONFIDENTIAL~~

~~CONFIDENTIAL~~

HARBOR DEFENSES OF SAN DIEGO
 FORT EMORY
 STRUCTURE PSR (BATTERY CONST. NO. 134)

Part II (Modified) Corrected to 26 May 1944

STRUCTURE: E 18,000
Location: S 53,300
Location: Fort Emory (Site No. 12)
Date of transfer: 25 April 1944
Cost to that date: \$121,348.15

95460

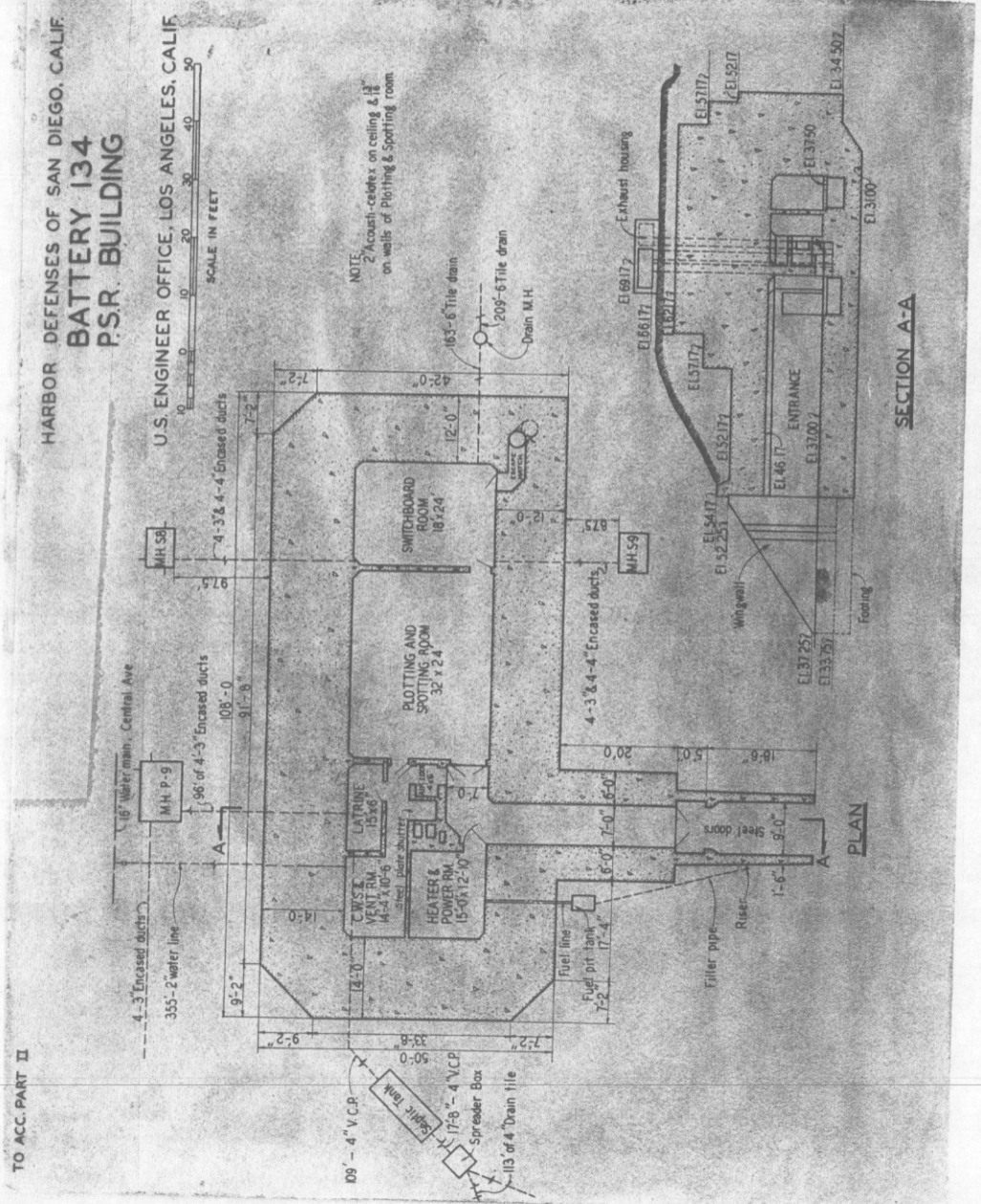
Type of construction
 (a) Roof: Reinforced concrete
 (b) Remainder of bldg.: Reinforced concrete
How concealed: Earth cover & Native grasses
How protected: Earth cover & burster-roof (16' thick)
Height above concealment: None
Height above protection: None
Conspicuous at 300 yards

UTILITIES:
Electric power:
 Source of: Commercial & Auxiliary Generator
 Characteristics: (See reverse)
 Kilowatts required: 23.5 (plus 6.5 for Ord. & Sig. Corps)
 Type of lighting fixtures: Direct (Wheeler reflectors)
Heat
 How heated: Electric strip-heaters (2 - 6 KW, each)
Water sewer
 Connected to water mains: 2" line to 16" main
 Connected to sewer: No
 Type latrine: Frost-proof, syphon jet.
 Type of disposal: Septic tank

REFERENCE:
 Reference of site: Elev. 37.0 above M.L.L.W.

Origin of U.S.E.D. local coordinates is U.S.C. & G.S.
 Station "Old Town."

But Road Const #7



~~CONFIDENTIAL~~

REPORT OF COMPLETED WORKS - SEACOAST FORTIFICATION
(Electric Plants)

HARBOR DEFENSES OF SAN DIEGO

FORT EMORY

POWER (AUXILIARY) FOR PSR BATTERY (CONST.) NO. 134

PROCURED & INSTALLED BY ENGINEERS

Incl 2

Part V

Corrected to 26 May 1944

	Serial	Type	Size	Mfr.	Date of	Transfer	Cost	Condition	RPM	Type	Radiator	Fuel	Switchboard
	No.				Transfer					of	for	Material	No. of Panels
Engine No. 1	1S6521SP	D-4600	53 HP	Caterpillar	25 Apr 44	*		Good	1200	Direct		Diesel Oil	
No. 2	--												
No. 3	--			Diesel									
No. 4	--												
Generator													
No. 1	30HK69	Alt.	37.5 KVA	Louis Allis Co.	"	*	"	"	"	"		--	
No. 2	--												
No. 3	--												
No. 4	--												
Radiator (or Water Cooler)													
No. 1	None	(Contained in unit)											
No. 2	--												
No. 3	--												
No. 4	--												
Motor Generator													
No. 1	--												
No. 2	--												
No. 3	--												
Switchboard	65070L	3 phase	--	Trumbull Elec.Co.	"	*	"		--	--	--		2
Storage Battery	None	--	Heavy Duty	Exide	"	*	"		--	--	--		
Transformer													
No. 1	#8019	Dry	15 KVA	Kuhlman Elec.Co.	"	*	"		--	--	--		
No. 2	"	"	"	"	"	*	"		--	--	--		
No. 3	"	"	"	"	"	*	"		--	--	--		
Auxiliaries													
No. 1	--												
No. 2	--												
No. 3	--												

Note: Original Primary Source of power: Main Battery (Construction curtailed).
 Present " " " " Commercial power.
 " Secondary " " " Engine-Generator Set, above.

* Cost included in Construction Contract.

95460

