

REPORT OF COMPLETED WORKS -- SEACOAST FORTIFICATIONS
(Gun and Mortar Batteries)

COAST DEFENSES OF SAN FRANCISCO, CALIF.

FORT. BARRY

BATTERY ALEXANDER

No. of ~~guns~~ ^{Mortars}

FOUR Caliber 12-INCH CarriageMortar

Form 1 Corrected to SEPTEMBER 1, 1923.

Battery commenced -----	1901.	Source of electric current---	* Battery Guthrie electric plant: Two 25-k.w. gas. motor sets.
Battery completed -----	1903.*		
Date of transfer -----	June 8, 1905.	Max. kv. required for lights---	8.2 k.w.
Material of construction ---	Concrete.	Max. kw. required for motors---	No motors.
Portland or Rosendale cement	Portland.		
Cost to date of transfer-----	\$100,382.00		
Connected to water supply---	Yes.	Present condition of battery-	Good.
Connected to sewer -----	Yes.	Rooms wet or dry -----	Dry.
Type of latrine -----	Syphon.		
Type of data transmission ---	Telephone.	How ventilated -----	Natural draft. Two 6" dia. flues from each magazine, extending through roof in one 10" dia. flue terminating in metal cap.
Union Elevation in-floor		Remarks-----	*Except as to minor details, work incident to setting baserings, delivering and mounting ordnance, etc.
battery of pits-----	170.6		
Datum plane -----	M.L.L.W.		

ARMAMENT.

Emplacement or mortar No.	Guns or Mortars					Carriages					
	Cal.	length	model	Serial No.	Manufacturer	mounted	Type	model	Serial No.	Manufacturer	Motor
1 PIT A 1	12"	11.759'	1890MI	160	Watervliet Ars.	Yes	Steel	1896Mi	280	Rarig Eng.Co.	None required.
2 2				**							
3 3	12"	11.759'	1890MI	147	do.	Yes	Steel	1896Mi	277	do.	do.
4 4				**							
5 PIT B 1	12"	11.759'	1890MI	151	do.	Yes	Steel	1896Mi	282	do.	do.
6 2				**							
7 3	12"	11.759'	1890MI	155	do.	Yes	Steel	1896Mi	284	do.	do.
8 4				**							

**MORTARS AND CARRIAGES REMOVED.

HOISTS.

Emplacement Number	Type	Delivery	Motor						Remodeled for long points.
			Serial No.	Maker	H.P.	Volts	RPM	Type of Control	
1									
2									
3			NO HOISTS REQUIRED.						
4									

* Plans for AC commercial power for lighting approved 6/29/42, 67511(San Fran.) CM 13,445

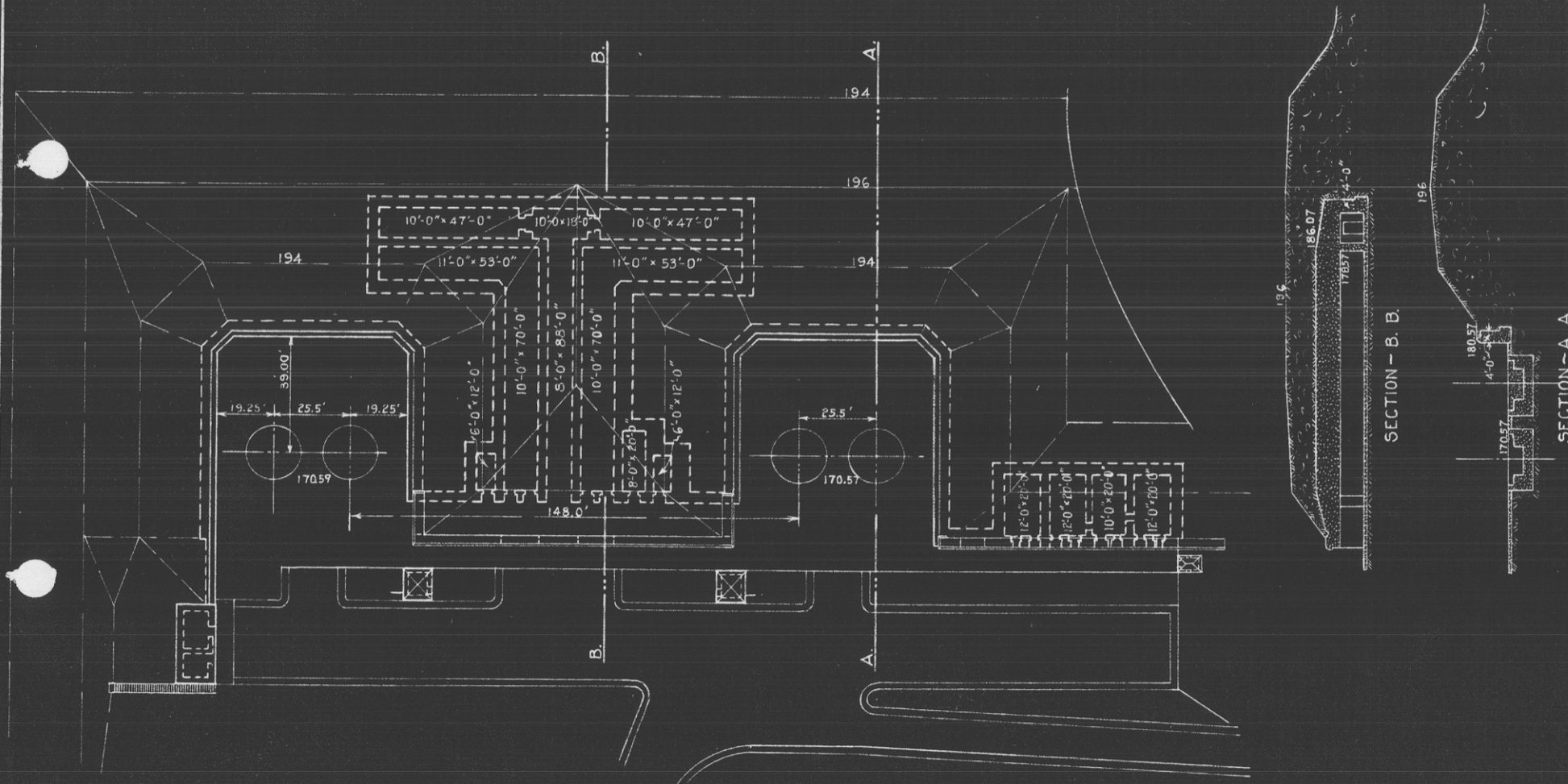
Reclassified in Class "C". To be used in training & target practice in lieu of Btry. Livingston. See 662B(San Fran)296

REPORT OF COMPLETED WORKS ~ SEACOAST FORTIFICATIONS
(BATTERY PLAN)

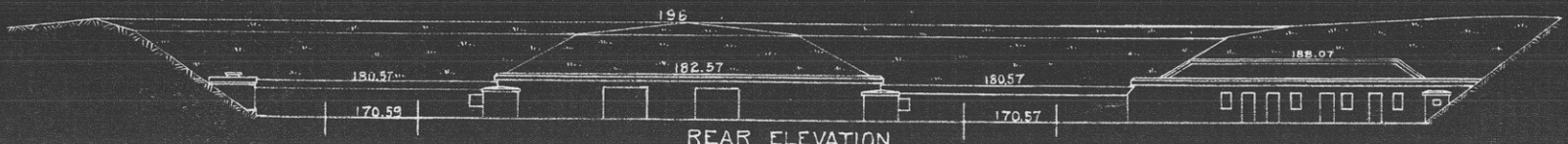
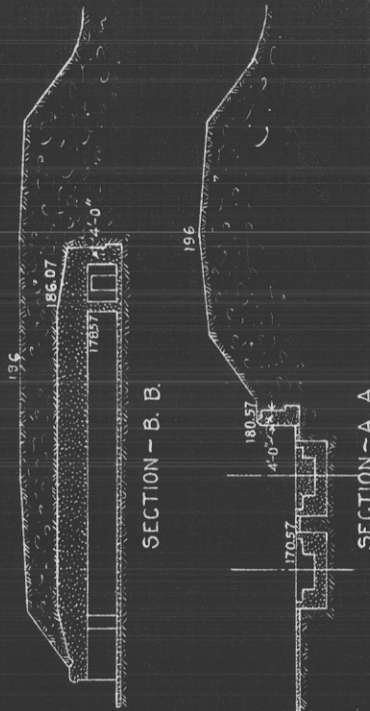
CORRECTED TO AUG. 1923

COAST DEFENSES OF SAN FRANCISCO, CAL.
FORT BARRY
BATTERY ALEXANDER
NO. OF MORTARS 4: CALIBER 12" : 4 MORTAR CARRIAGES

FORM-7



PLAN.



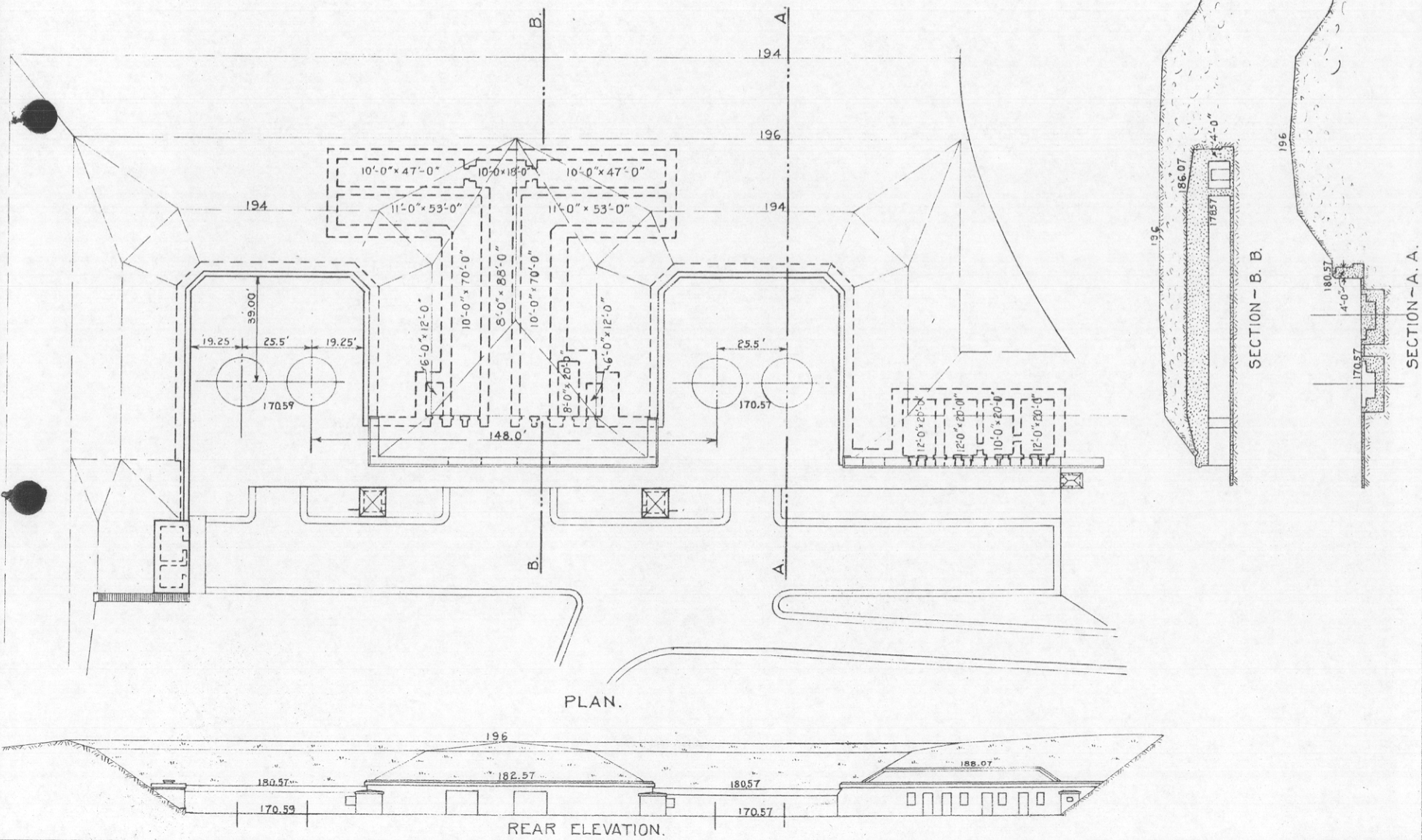
REAR ELEVATION.

REPORT OF COMPLETED WORKS ~ SEACOAST FORTIFICATIONS
(BATTERY PLAN)

CORRECTED TO AUG. 1923

COAST DEFENSES OF SAN FRANCISCO, CAL.
FORT BARRY
BATTERY ALEXANDER
NO. OF MORTARS 4: CALIBER 12^{IN}: 4 MORTAR CARRIAGES

FORM-7

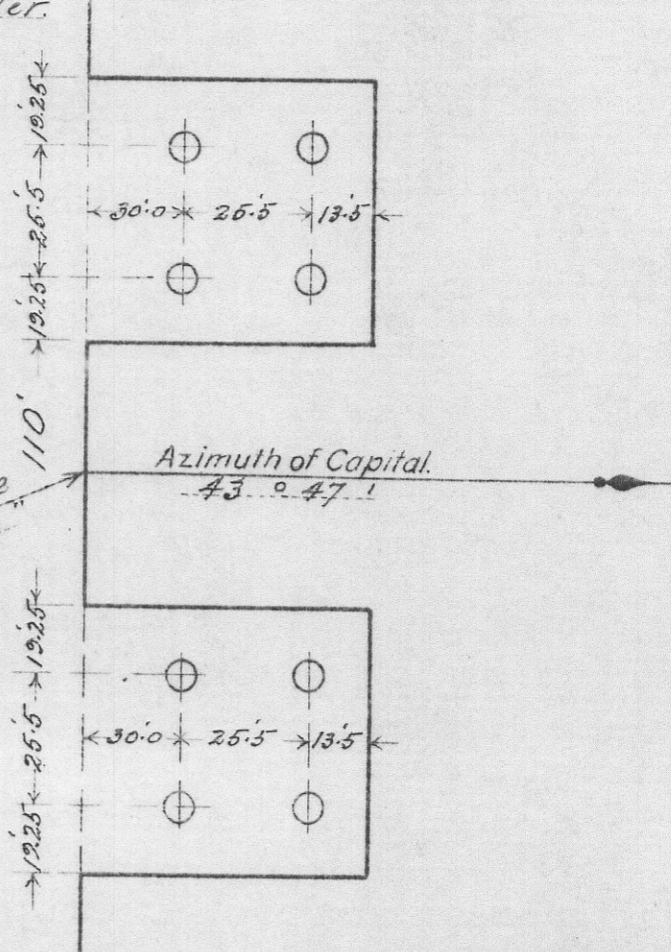


FORT Barry BATTERY Alexander 8-12" MORTARS.

ARMAMENT BATTERY Alexander.

MODELS OF	MORTARS	CARRIAGES
PIT A No.1	1890	1896
" 2	1890	1896
" 3	1890	1896
" 4	1890	1896
PIT B No.1	1890	1896
" 2	1890	1896
" 3	1890	1896
" 4	1890	1896

Converted into Model 1896 Ml.



Azimuth 77.572° $\frac{1840}{1000}$ ft. to ϕ rear face of center traverse from "Rodeo"

Position of "Rodeo"
 Lat. $37^\circ 49'$ 1195.6 metres.
 Long. $122^\circ 31'$ 511.7 "

ELEVATION OF FLOORS OF PITS 170.57 ABOVE PLANE OF M.L.L.W.

Obsolete

REPORT OF COMPLETED WORKS -- SEACOAST FORTIFICATIONS.
(Fire control or Torpedo Structures)

HARBOR DEFENSES OF SAN FRANCISCO.
~~XXXXXX~~ FORT. BARRY.
STRUCTURE. Plotting Room, Battery Alexander.

Form 2. Corrected to DEC 10 1927

Location	In right flank traverse of Battery Alexander.	Type of data transmission	Telephone.
Date of transfer	Room built when battery was constructed. Occupied as P. Alexander about 1919.	Date of transfer	Installed by Artillery.
Cost to that date		Cost of data transmission equipment	
Type of construction		For tide stations give description of tide gauge	
(a) Roof	Concrete and earth.	For datum points give Forts from which visible	
(b) Remainder of bldg.	Concrete and earth.	For dormitories give stations served	
How concealed	Concrete and earth.	For cable hut give S.C-Type	
How protected	Concrete and earth.		
Heights above concealment	Not above concealment.		
Heights above protection	Not above protection.		
Conspicuous at _____ yards	Not visible from sea.		
Source of electric current	Batty. Guthrie power plant.		
Kilowatts required	.84 k.w.		
Type of lighting fixtures	Arm. cable, w. t. fixtures, indirect lights.		
How heated	Not heated.		
Connected to water mains	No.		
Connected to sewer	No.		
Type of latrine	Use battery latrine.		
Permanent or temporary installation	Permanent.		
Present condition	Good.		
Reference of site	171 ft. above M.L.L.W.		
Reference of instrument axis			
Type of observing inst.			
Type of plotting board	110° Board, Model 1915.		
Type and capacity of crane			
Max. dimensions of reel handled			

