

Superseded

REPORT OF COMPLETED WORKS -- SEACOAST FORTIFICATIONS
(Gun and Mortar Batteries)

COAST DEFENSES OF SAN FRANCISCO, CAL.....
FORT BAKER.....
BATTERY DUNCAN.....
No. of guns 0** Caliber 8-INCH Carriage Non.Dis.

Form 1 Corrected to **MARCH 1, 1920**

Battery commenced-----	1898.	Source of electric current-----	Duncan-Yates plant: Two 25-k.w. gas. motor sets.
Battery completed-----	1899.		
Date of transfer-----	May 5, 1900.	Max. kv. required for lights	4. k.w.
Material of construction---	Concrete.	Max. kw. required for motors	No motors.
Portland or Rosendale cement	Portland.		
Cost to date of transfer----	\$57,535.00	Present condition of battery	Good.
Connected to water supply---	Yes.	Rooms wet or dry-----	Dry.
Co. nected to sewer-----	Yes.	How ventilated-----	Natural draft. 6" vent from magazine terminat-
Type of latrine-----	Syphon.	Remarks-	ing in Emplacement wall.
Type of data transmission---	Telephone and speaking tube.		
Minimum Elevation intr. crest			
of battery-----	215.1		
Datum plane-----	M.L.L.W.		

ARMAMENT.

Emplacement or mortar No.	Guns or Mortars				Carriages						
	Cal.	length	model	Serial No.	Manufacturer	mounted	Type	model	Serial No.	Manufacturer	Motor
1											
2	**TWO EMPLACEMENTS. GUNS REMOVED, 1918; CARRIAGES DISMOUNTED BUT STILL AT BATTERY.										
3											
4											
5											
6											
7											
8											

HOISTS.

Emplacement Number	Type	Delivery	Motor					Date of transfer	Remodeled for long points.
			Serial No.	Maker	H.P.	Volts	RPM		
1									
2									
3									
4									

Superseded - See Form 1, corrected to Oct 1, 1927

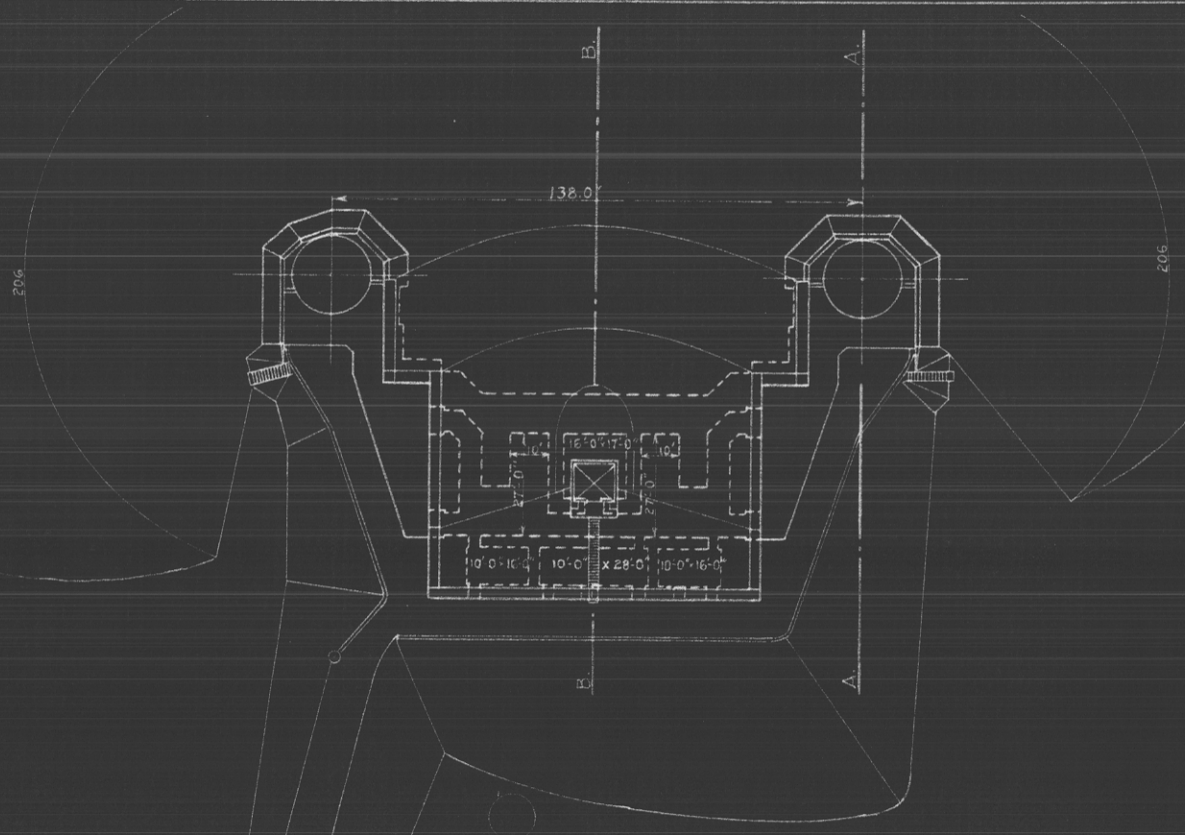
REPORT OF COMPLETED WORKS ~ SEACOAST FORTIFICATIONS
(BATTERY PLAN)

COAST DEFENSES OF SAN FRANCISCO, CAL.
FORT BAKER
BATTERY DUNCAN

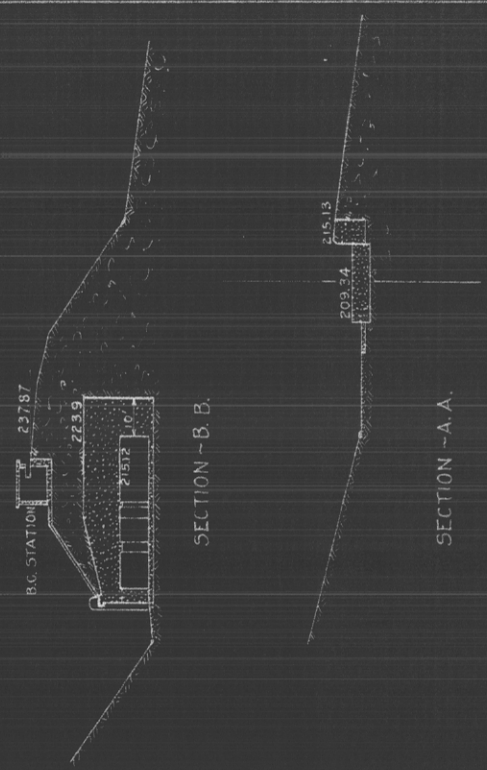
CORRECTED TO DEC. 1919.

No. of GUNS 0: CALIBER — : CARRIAGE 0
EMPTS. FOR 8" GUNS NONDISAPPEARING CARRIAGES

FORM-7

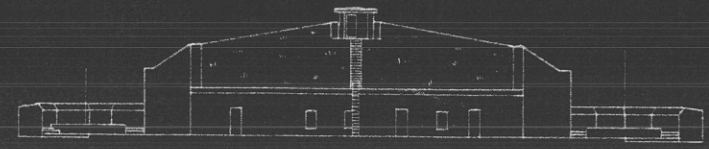


PLAN.



SECTION - B. B.

SECTION - A. A.



REAR ELEVATION.

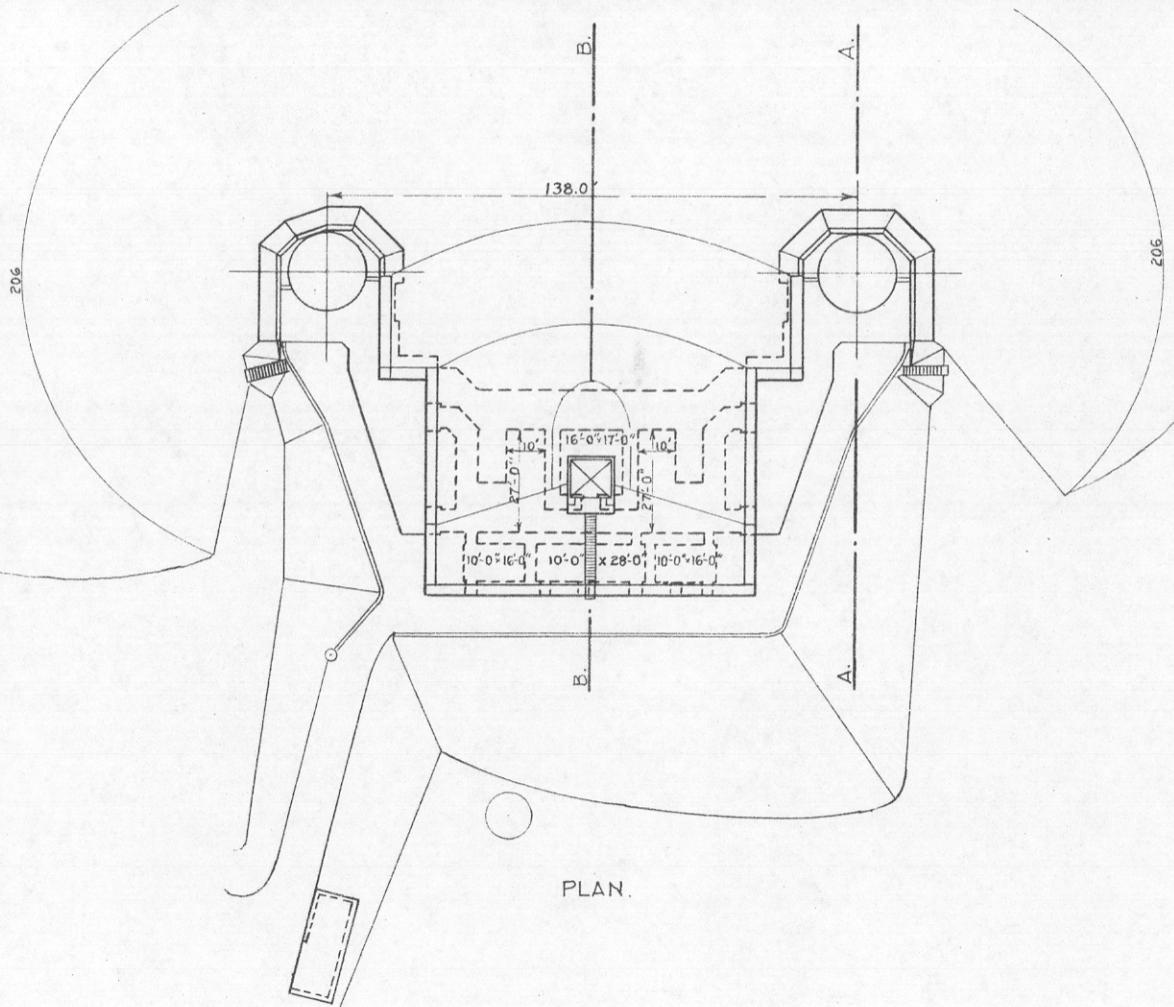
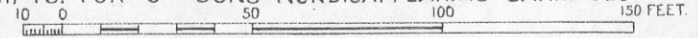
REPORT OF COMPLETED WORKS ~ SEACOAST FORTIFICATIONS
(BATTERY PLAN)

COAST DEFENSES OF SAN FRANCISCO, CAL.
FORT BAKER
BATTERY DUNCAN

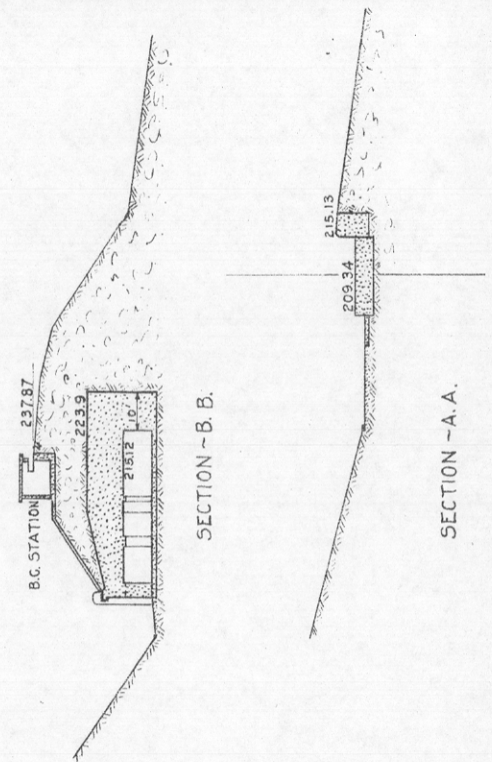
CORRECTED TO DEC. 1919.

No. OF GUNS 0 : CALIBER — : CARRIAGE 0
EMPTS. FOR 8" GUNS NONDISAPPEARING CARRIAGES

FORM-7

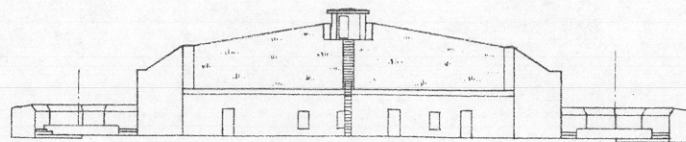


PLAN.



SECTION - B. B.

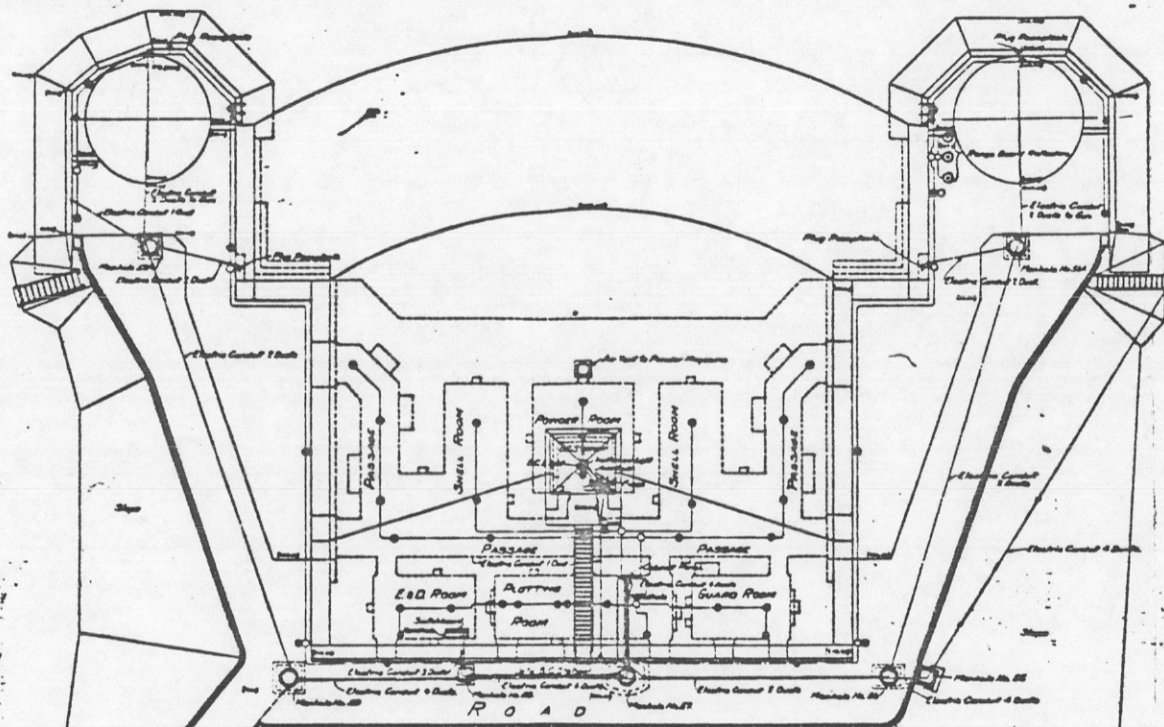
SECTION - A. A.



REAR ELEVATION.

CIRCUIT INDEX FOR CABINET PANEL

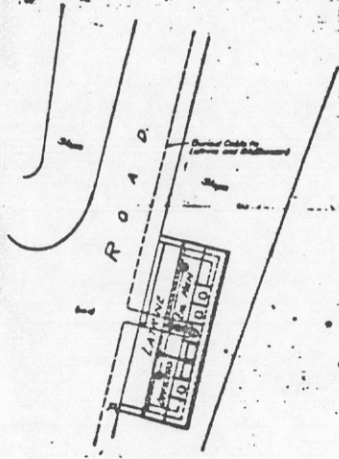
- 1- Magazine and Shell Rooms
- 2- Messing
- 3- Messing Light Exp. No. 1
- 4- Messing and Guard Room
- 5- Messing Light Exp. No. 2
- 6- All Light
- 7- Light Sun No. E
- 8- Light B.A. (Sun) and Latrine
- 9- Light B.C. (Ship)
- 10- Light Sun No. L



Electric Control
1 Switch to Sun
2 Switch to Sun
3 Switch to Sun
4 Switch to Sun
5 Switch to Sun
6 Switch to Sun
7 Switch to Sun
8 Switch to Sun
9 Switch to Sun
10 Switch to Sun
11 Switch to Sun
12 Switch to Sun

LEGEND

- Switch and junction box and lamp receptacle
- Junction box and lamp receptacle
- Junction box
- Switch
- Plug
- Drop Light Fixture
- Plug receptacle
- Plug fixture
- Arranged cable
- Wiring as installed
- Buried cable



**ELECTRIC WIRING
AT
BATTERY DUNCAN,
FORT BAKER, CAL.**

Scale: 1/8" = 1 Foot.

U.S. Engineer Office
San Francisco, Cal.
Approved and Recommended by the Chief of Engineers
U.S. Army with former dated December 24, 1916.
Frank H. Cole
Lieut. Col., Corps of Engineers, U.S. Army.

RECORDED
INDEXED
20 4 3

COAST DEFENSES OF San Francisco, California

FORT Baker BATTERY Duncan No. of GUNS: 2 CALIBER: 8"

	EMPLACEMENT NUMBER 1.		EMPLACEMENT NUMBER 2.		EMPLACEMENT NUMBER 3.		EMPLACEMENT NUMBER 4.	
	FROM.	To.	FROM.	To.	FROM.	To.	FROM.	To.
1-a. Azimuth.	303°33'		30°21½'					
b. Distance.	656.0		137.7					
2-a. Model of Gun.	1888		1888					
b. " " Carriage.	1892		1892					
c. Type of " "	Non Dis.		Non Dis.					
3- Elevations of.								
a. Gun trunnions (in battery.)	217.41		217.42.					
b. Interior crest.	214.86		214.87					
c. Loading platform.	209.36		209.37					
4- Angle of depression.	4°45'		6°00'					
5- Limiting azimuths of field of fire as determined by:								
a. Construction of emplacement.	01	01	01	01	01	01	01	0
b. Interference by adjacent emplacements.	No interference.							
c. Interference of other obstacles external to emplacement.	No obstacles.							
d. Position of Ordnance stops.	No ordnance stops fitted							

NOTES.

1. Azimuth and distance of emplacement No. 2 are given with reference to No. 1; of No. 3, with reference to No. 2, etc. Azimuth and distance of No. 1, are given with reference to Cavallos 2 { Latitude - 37°50' - 434.3 meters.
Longitude - 122°28' - 517.5 " }
3. Above plane of M. L. L. W.
- 5-c. Nature of obstacles: No obstacles.
- 2-c. Use one of following abbreviations or designations: Dis.; Nondis.; Alt. gun-lift; Turret; Casemate; Ped.; B.P.

Obsolete

REPORT OF COMPLETED WORKS -- SEACOAST FORTIFICATIONS.
(Fire control or Torpedo Structures)

HARBOR
~~COAST~~ DEFENSES OF SAN FRANCISCO.
FORT... **BAKER**
STRUCTURE... **PLOTTING ROOM**
BATTERY DUNCAN.

Form 2. Corrected to NOV 1 1927

Location : Under traverse between Emp. #1 and 2.

Date of transfer : Aug. 5, 1910.

Cost to that date : MODIFICATIONS \$496.35

Type of construction :

(a) Roof : Concrete.

(b) Remainder of bldg. : Concrete.

How concealed : By earth and concrete.

How protected : By earth and concrete.

Heights above concealment : Not above concealment.

Heights above protection : Not above protection.

Conspicuous at _____ yards : Not conspicuous.

Source of electric current : Duncan-Yates power plant.

Kilowatts required : .6 k.w. (when in service)

Type of lighting fixtures : W.T. fixtures, arm. cable.

How heated : Not heated.

Connected to water mains : No.

Connected to sewer : Yes.

Type of latrine : Use battery latrine.

Permanent or temporary installation : Permanent.

Present condition : Good.

Reference of site : ~~220~~ 220'

Reference of ~~instrument~~ floor : 201.7'

~~201.7'~~

Type of observing inst. :

Type of plotting board : Removed.

Type and capacity of crane :

Max. dimensions of reel handled :

Type of data transmission : Telephone. All equipment removed; battery disarmed.

Date of transfer :

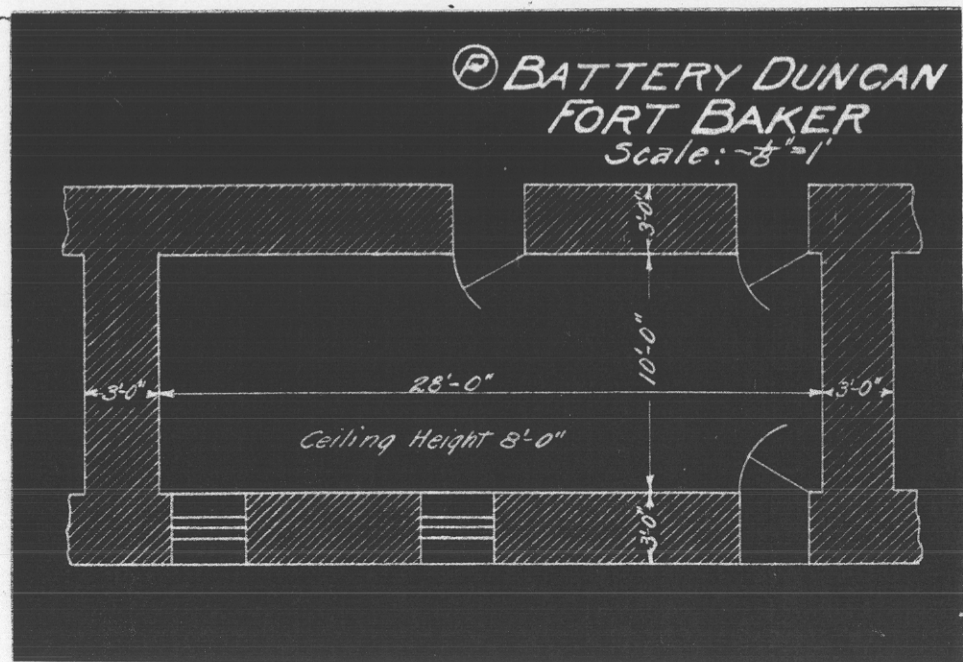
Cost of data transmission : equipment

For tide stations give description of tide gauge :

For datum points give Forts from which visible :

For dormitories give stations served :

For cable hut give S.C-Type :



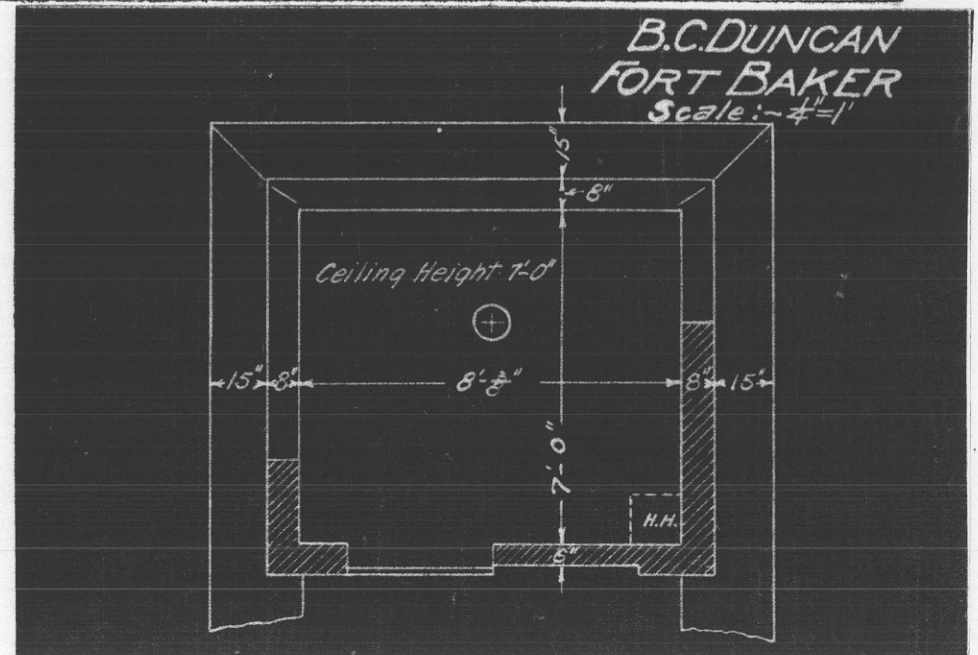
Obsolete

REPORT OF COMPLETED WORKS -- SEACOAST FORTIFICATIONS.
(Fire control or Torpedo Structures)

HARBOR DEFENSES OF SAN FRANCISCO.
~~SEACOAST~~ FORT BAKER.
STRUCTURE B.C. DUNCAN.

Form 2. Corrected to NOV 1 1927

Location	On earth traverse between Guns #1 and #2.	Type of data transmission	Telephone. All equipment removed; battery disarmed.
Date of transfer	Aug. 5, 1910.	Date of transfer	
Cost to that date	MODIFICATIONS \$816.80	Cost of data transmission	
Type of construction		equipment	
(a) Roof	Concrete.	For tide stations give description of tide gauge	
(b) Remainder of bldg.	Concrete.	For datum points give Forts from which visible	
How concealed	By earth parapet.	For dormitories give stations served	
How protected	By earth parapet.	For cable hut give S.C-Type	
Heights above concealment	3.9'		
Heights above protection	3.9'		
Conspicuous at 1500 yards	from sea.		
Source of electric current	Duncan-Yates power plant.		
Kilowatts required	.12 (when in service)		
Type of lighting fixtures	W.T. fixtures and iron conduit.		
How heated	Not heated.		
Connected to water mains	No.		
Connected to sewer	No.		
Type of latrine	Use battery latrine.		
Permanent or temporary installation	Permanent.		
Present condition	Good.		
Reference of site	228.		
Reference of instrument axis	234.23		
Type of observing inst.	Instrument removed.		
Type of plotting board			
Type and capacity of crane			
Max. dimensions of reel handled			



*Recommended to be demolished
C/E, 600.6 (San Francisco) 6*

Obsolete

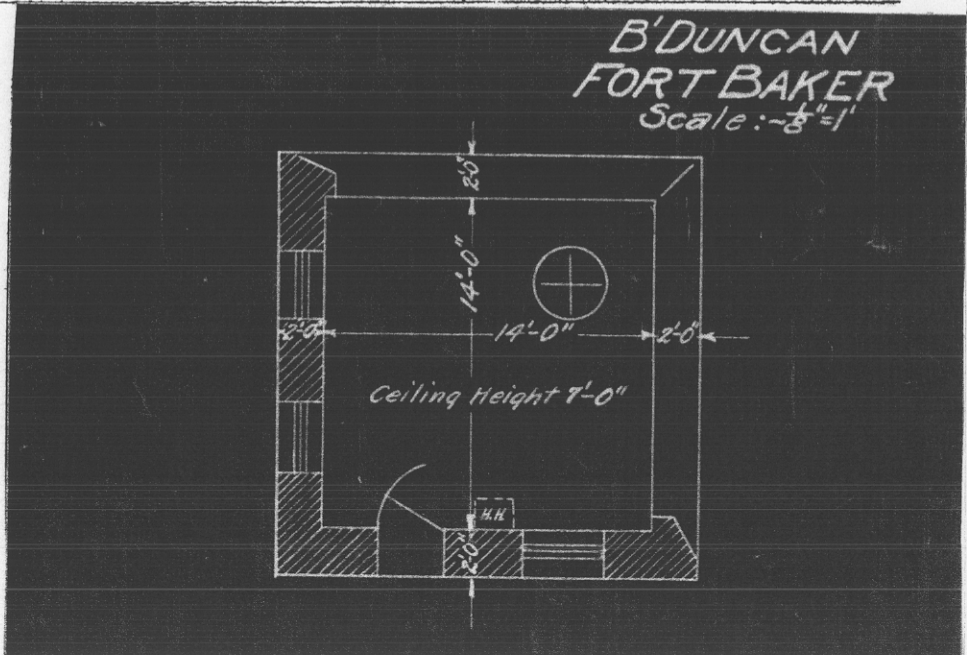
REPORT OF COMPLETED WORKS -- SEACOAST FORTIFICATIONS.
(Fire control or Torpedo Structures)

~~COAST~~ HARBOR DEFENSES OF SAN FRANCISCO.

FORT. ~~BAKER~~.....
STRUCTURE.. B' DUNCAN.....

Form 2. Corrected to NOV 1 1927

Location	: On hill about 740 ft. to north of Battery Duncan.	Type of data transmission	: Telephone. All equipment removed; battery disarmed.
Date of transfer	: Dec. 28, 1900.	Date of transfer	:
Cost to that date	: \$1,542.88	Cost of data transmission	:
Type of construction	:	equipment	:
(a) Roof	: Iron.	For tide stations give description of tide gauge	:
(b) Remainder of bldg.	: Concrete.	For datum points give Forts from which visible	:
How concealed	: Earth parapet.	For dormitories give stations served	:
How protected	: Earth parapet.	For cable hut give S.C. Type	:
Heights above concealment	: 4.5'	:	:
Heights above protection	: 4.5'	:	:
Conspicuous at 1000 yards	: from sea.	:	:
Source of electric current	: Duncan-Yates power plant;	:	:
Kilowatts required	: .12 k.w. (when in service)	:	:
Type of lighting fixtures	: W.T. fixtures, arm. cable.	:	:
How heated	: Not heated.	:	:
Connected to water mains	: No.	:	:
Connected to sewer drain	: Yes.	:	:
Type of latrine	: No latrine.	:	:
Permanent or temporary installation	: Permanent.	:	:
Present condition	: Fair.	:	:
Reference of site	: 284.0	:	:
Reference of instrument axis	: 285.5 above M.L.L.W. Inst. removed.	:	:
Type of observing inst.	:	:	:
Type of plotting board	:	:	:
Type and capacity of crane	:	:	:
Max. dimensions of reel handled	:	:	:



*Recommended to be demolished
c/f E. 600.6 (San Francisco) 6*