

662 (San Francisco) CM 38179

CONFIDENTIAL

O-129

REPORT OF COMPLETED WORKS - SEACOAST FORTIFICATIONS
(Gun and Mortar Batteries)

HARBOR DEFENSES OF San Francisco
FORT Scott
BATTERY Fort Point 3"
No. of Guns 2 Caliber 3" Carriage

Form 1 Corrected to February 12, 1943

| | | | |
|-----------------------------|--------------------|------------------------------|---------|
| GENERAL: | | ELECTRIC CURRENT: | |
| Battery commenced | July 25-42 | Sources of | None |
| Battery completed | Aug 12-42 | | |
| Date of transfer | June 1-43 | Max. kw. required for lights | None |
| Cost at date of transfer | \$1361.02 | Max. kw. required for motors | None |
| Materials of construction | Concrete | | |
| Types of cement | Portland | | |
| WATER & SEWER: | | Present condition of battery | Good |
| Connected to water supply | No | Rooms wet or dry | Not cas |
| Connected to sewer | No | | |
| Type of latrine | None | How ventilated | None |
| | | Type of data transmission | |
| Trunnion elevation in btry. | #1 - 69.57 | Remarks- | |
| Datum plane | #2 - 69.66 MLLW | | |

ARMAMENT Installed by Ordnance

| Emplacement or mortar No. | Cal. | length | Guns or Mortars | | | Carriages | | | | | |
|------------------------------|------|--------|-----------------|------------|-----------------|-----------|-------|-------|------------|-----------------|-------|
| | | | model* | Serial No. | Manufacturer | mounted | Type | model | Serial No. | Manufacturer | Motor |
| 1 | 3" | | 1902 M1 | 20 | Bethlehem Steel | | Barb. | 1902 | 20 | Bethlehem Steel | |
| 2 | 3" | | " | 21 | " " | | " | " | 21 | " " | |
| 3 | | | | | | | | | | | |
| 4 | | | | | | | | | | | |
| 5 | | | | | | | | | | | |
| 6 | | | | | | | | | | | |
| 7 | | | | | | | | | | | |
| 8 | | | | | | | | | | | |

HOISTS

| Emplacement Number | Type | Delivery | Motor | | | | | Date of transfer | Remodeled for long points |
|-----------------------|------|----------|------------|-------|------|-------|-----|------------------|---------------------------------|
| | | | Serial No. | Maker | H.P. | Volts | RPM | | |
| 1 | | | | | | | | | |
| 2 | | | | | | | | | |

CONFIDENTIAL

Incl. 3'

Superseded - see Part I corrected to Oct 43

REPORT OF COMPLETED WORKS - SEA COAST DEFENSES

HARBOR DEFENSES OF SAN FRANCISCO
 FT. POINT, FORT SCOTT, CALIFORNIA
 3" GUN PEDESTAL MOUNTS
 No. of guns-2 Caliber-3" Carriage

Corrected to Feb. 12, 1943.

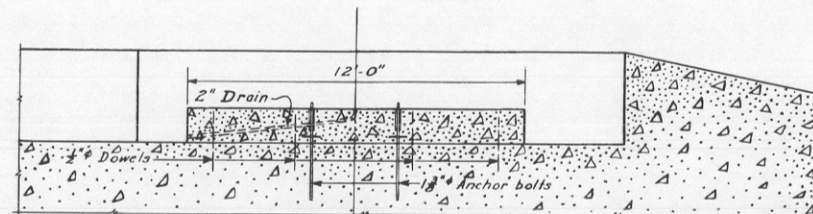
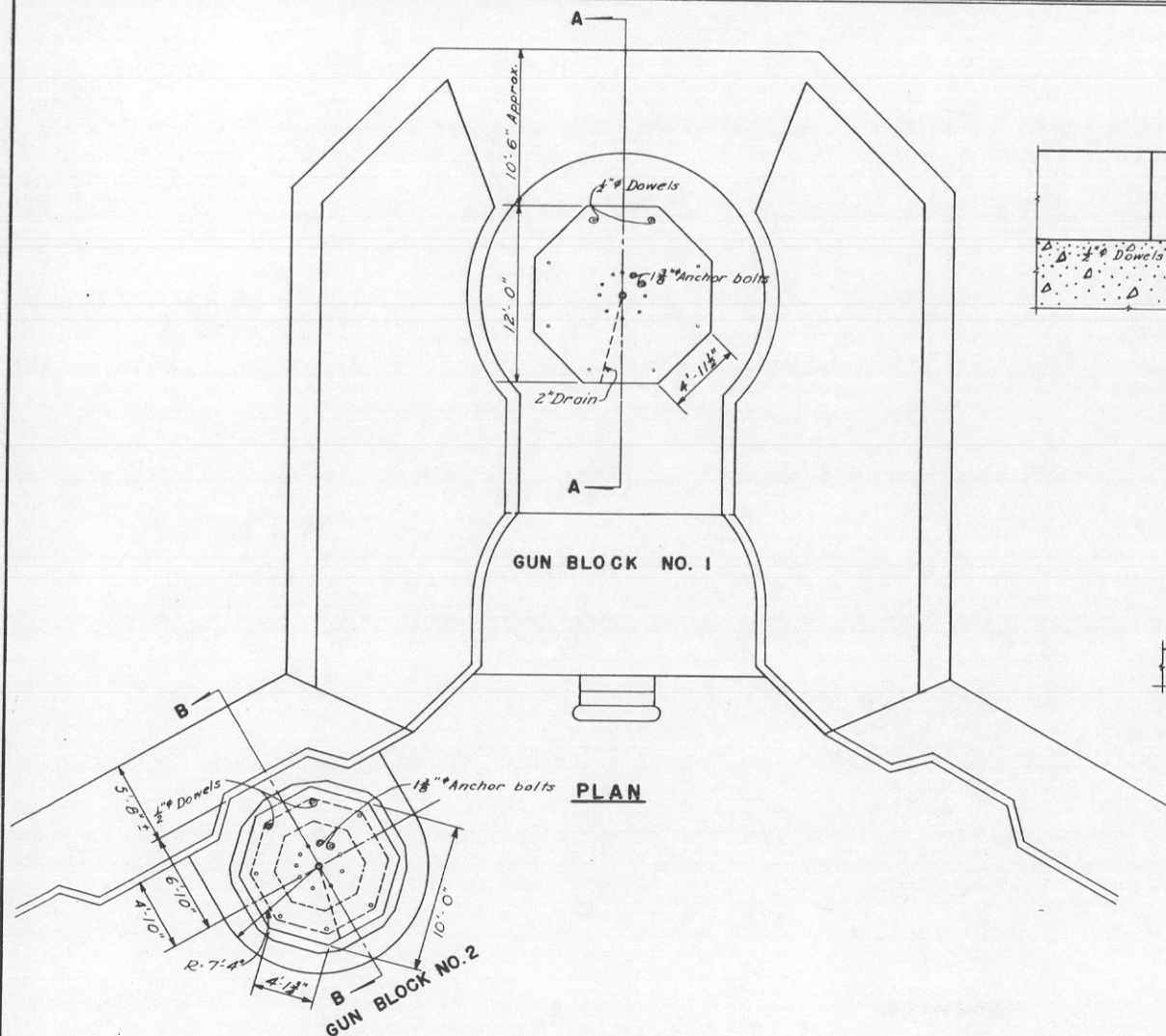
Form 7

5 0 5 10 15 20 FEET

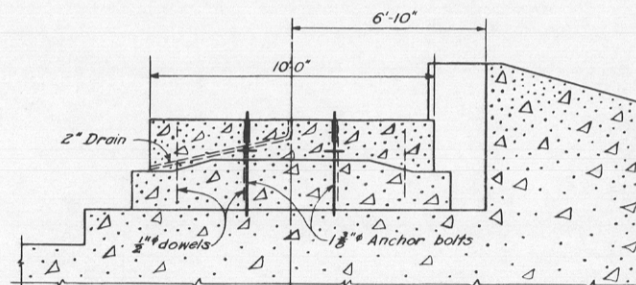
PLAN

5 0 5 10 FEET

SECTION



SECTION A-A



SECTION B-B

Note: Elev. at ϵ of Trunnion - Gun No. 1 = 69.57' MLLW
 Elev. at ϵ of Trunnion - Gun No. 2 = 69.66' MLLW

CONFIDENTIAL

SPEKM-1

600,914 (San Fran) CM 81701

REPORT OF COMPLETED WORKS - SEACOAST FORTIFICATIONS
(Batteries)

HARBOR DEFENSES OF SAN FRANCISCO
FORT.. Scott
BATTERY.. Ft. Point.....No. of Guns.. 2, 4
Caliber.....3".....Carriages.. 1902

Part I Corrected to October 1943

GENERAL:

Battery commenced .. 25 July 1942
Battery completed... 13 August 1942
Date of transfer.... 1 June 1943
Cost to date of transfer. \$1,361.02 (see reverse)
Materials of construction. Reinforced Concrete
Battery new or modernized. Modernized
(If modernized give detailed statement on reverse side)
Trunnion elevation in btry. #1 - 69.57 #2 - 69.68
Datum plane.. MLLW ± 0.00
Elev. top gun blocks #3 - 65.53 #4 - 65.51 MLLW

UTILITIES:

WATER SUPPLY

Source of .. None
Alternate source.....
Size of Main.....

SEWER

Connected to sewer... No
Type of Disposal.....
Type of Latrine..... None

UTILITIES (Cont'd)

ELECTRIC POWER

Sources of .. None
Procured & installed by (OCE or ORD).....
Characteristics: VoltageAc or DC...Phase....
No. of units and capacity.....
Max. K.W. required for utilities.....
Max. K.V. required for non-battle conditions.....
Commercial power provided (yes or no). No. Capacity.....
Auxiliary power unit provided (yes or no). No..... Capacity.....
Type of lighting fixtures.....
Dehumidifying Unit...Make and capacity.....
Rooms Wet or Dry.....
How ventilated.....
How heated.....

DATA TRANSMISSION

Type.....
REMARKS See reverse side of this form for addition of Gun Emplacements #3 & #4

ED Form A 162A
16 Sept. 43

ARMAMENT for Guns #1 & #2 transferred by HDSF
ARMAMENT for Guns. #3 & #4
ARMAMENT (Transferred from 3" Battery Kirby by HDSF)

81701

| Emplacement No. | Cal. | Length | Model | Guns | | | | Carriages | | | |
|-----------------|------|--------|---------|------------|-----------------|---------|-------|-----------|------------|-----------------|-------|
| | | | | Serial No. | Manufacturer | Mounted | Type | Model | Serial No. | Manufacturer | Motor |
| 1 | 3" | | 1902 M1 | 20 | Bethlehem Steel | Yes | Barb. | 1902 | 20 | Bethlehem Steel | none |
| 2 | 3" | | " | 21 | " | " | " | " | 21 | " | " |
| 3 | 3" | | " | 22 | " | " | " | " | 22 | " | " |
| 4 | 3" | | " | 23 | " | " | " | " | 23 | " | " |

CONFIDENTIAL

Incl #91

FS-386 Proj Cal. 93

CONFIDENTIAL

REPORT OF COMPLETED WORKS—SEA COAST DEFENSES

HARBOR DEFENSES OF SAN FRANCISCO
FT. POINT, FORT SCOTT, CALIFORNIA
3" GUN PEDESTAL MOUNTS

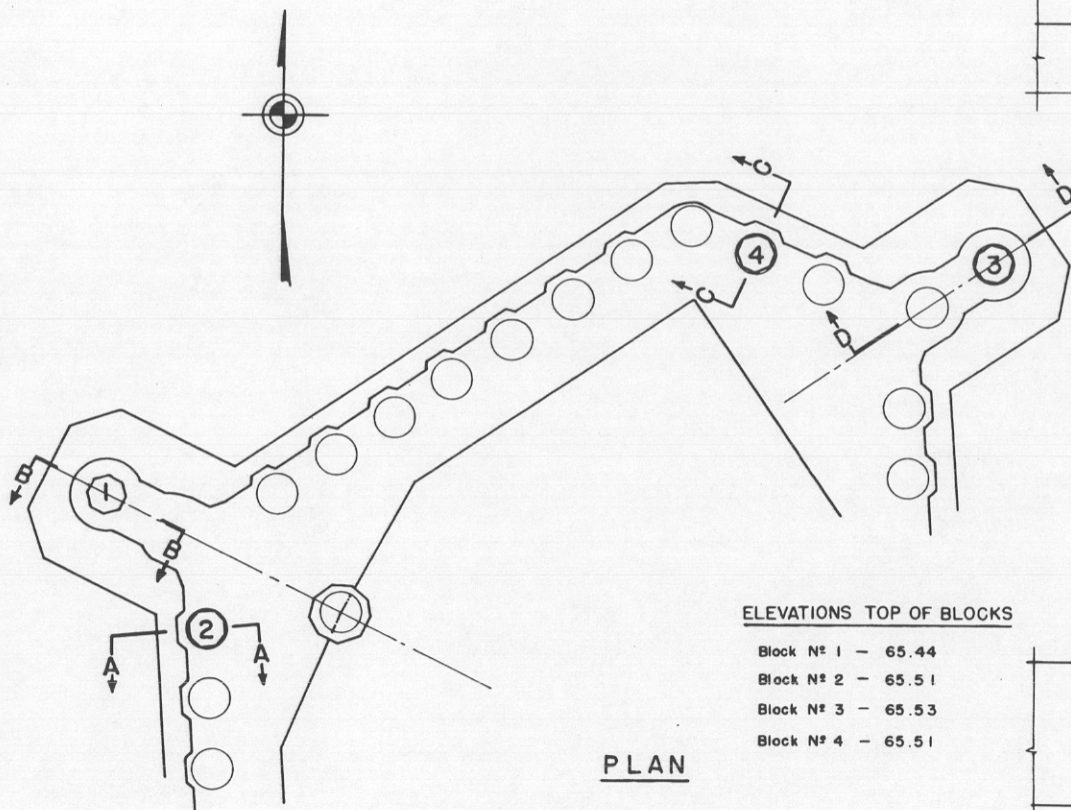
N^o of Guns - 4 Caliber - 3" Carriage - 1902

20 0 20 40 60 80 100 FEET

6 3 0 3 6 9 12 FEET
PLAN
SECTIONS

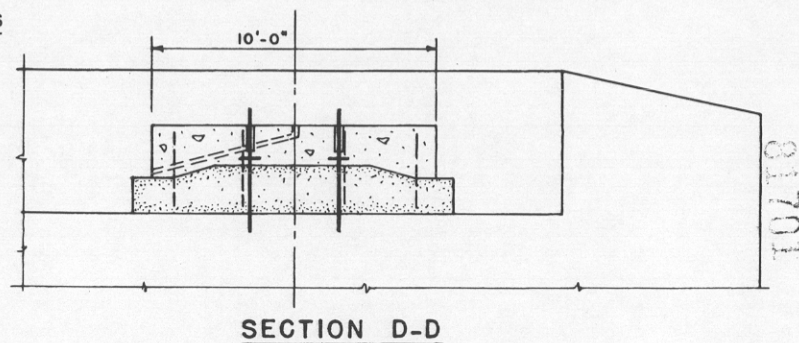
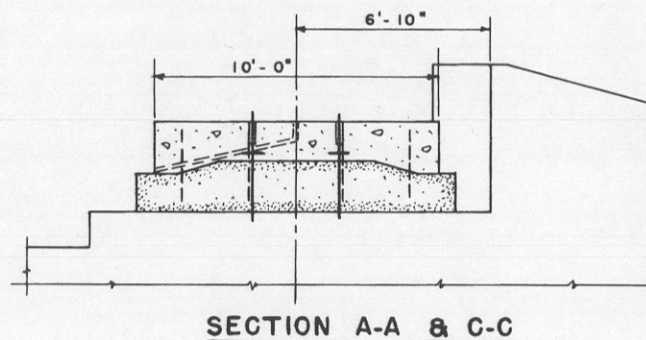
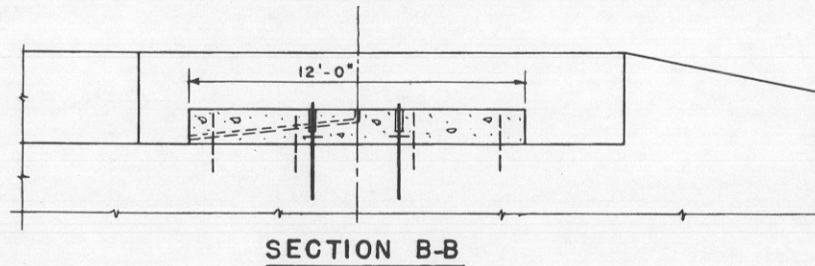
Part VII

Corrected to December 1943



ELEVATIONS TOP OF BLOCKS

- Block N^o 1 - 65.44
- Block N^o 2 - 65.51
- Block N^o 3 - 65.53
- Block N^o 4 - 65.51



81701

CONFIDENTIAL