

REPORT OF COMPLETED WORKS -- SEACOAST FORTIFICATIONS
(Gun and Mortar Batteries)

COAST DEFENSES OF... SAN FRANCISCO, CALIF.
FORT. BAKER
BATTERY... GEORGE YATES
No. of guns SIX Caliber 3-INCH Carriage Barb. A.R.F.

Form 1 Corrected to SEPTEMBER 1, 1923.

Battery commenced -----	April, 1903.	Source of electric current---	* From Duncan-Yates Plant: Two 25-k.w. gas. motor sets.
Battery completed -----	Dec. 1903.		
Date of transfer -----	June 8, 1905.	Max. kv. required for lights	2.9 k.w.
Material of construction ----	Concrete.	Max. kw. required for motors	No motors.
Portland or Rosendale cement	Portland.		
Cost to date of transfer -----	\$41,406.82	Present condition of battery	Good.
Connected to water supply ----	Yes.	Rooms wet or dry -----	Dry.
Connected to sewer -----	Yes.		
Type of latrine -----	Syphon.	How ventilated -----	Natural draft. 6" vents from magazines terminating in traverse wall.
Type of data transmission ----	Telephone.	Remarks-	
Trunnion elevation in battery -----	76.4		
Datum plane -----	M.L.L.W.		

ARMAMENT.

Emplacement or mortar No.	Guns or Mortars					Carriages					
	Cal.	length	model	Serial No.	Manufacturer	mounted	Type	model	Serial No.	Manufacturer	Motor
1	3"	12.8625	1902MI	18	Bethlehem S.Co.	Yes	Barb.	1902	18	Bethlehem S.Co.	
2	3"	12.8625	1902MI	19	do.	Yes	do.	1902	19	do.	
*** 3	3"	12.8625	1902MI	20	do.	Yes	do.	1902	20	do.	
4	3"	12.8625	1902MI	21	do.	Yes	do.	1902	21	do.	None
** 5	3"	12.8625	1902MI	22	do.	Yes	do.	1902	22	do.	re-
6	3"	12.8625	1902MI	23	do.	Yes	do.	1902	23	do.	quired.
7											
8											

HOISTS.

Emplacement Number	Type	Delivery	Motor						Date of transfer	Remodeled for long points.
			Serial No.	Maker	H.P.	Volts	RPM	Type of Control		
1										
2										
3			NO HOISTS REQUIRED.							
4										

* Plans for furnishing A.C. commercial power approved 4/29/42, 6751 (San Fran) & M. 12,916.
 *** Resiting of guns 3 & 4 to "Old Fort Point" approved by CG, WDC 49th Army 4/20/42 662 B (San Fran) MR 6374.
 ** Temporary relocation of guns 5 & 6 to Ft. Cronkhite approved 6/14/40. See 662 B (San Fran) 224. Done 9/30/42

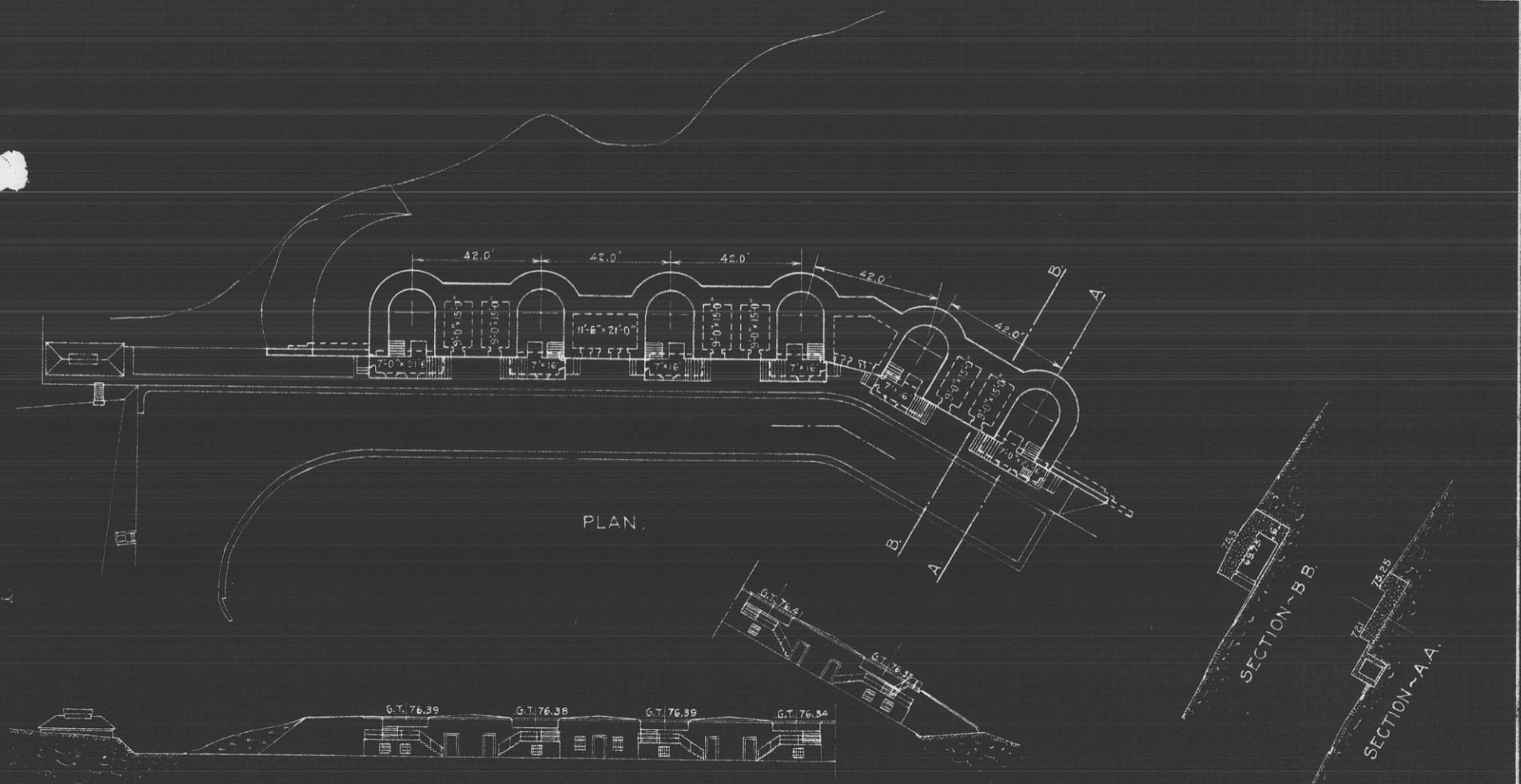
REPORT OF COMPLETED WORKS - SEACOAST FORTIFICATIONS
(BATTERY PLAN)

COAST DEFENSES OF SAN FRANCISCO, CAL.
FORT BAKER
BATTERY GEORGE YATES
NO. OF GUNS 6 : CALIBER 3 IN. : BARBETTE CARRIAGE

CORRECTED TO DEC. 1919.

FORM-7

10 0 50 100 150 FEET



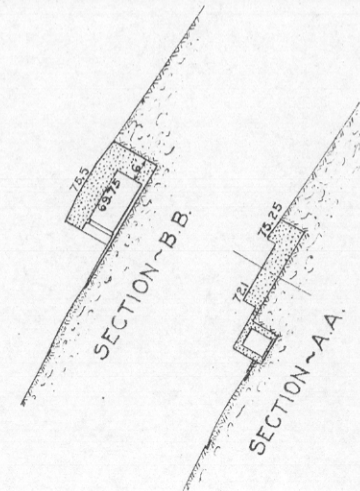
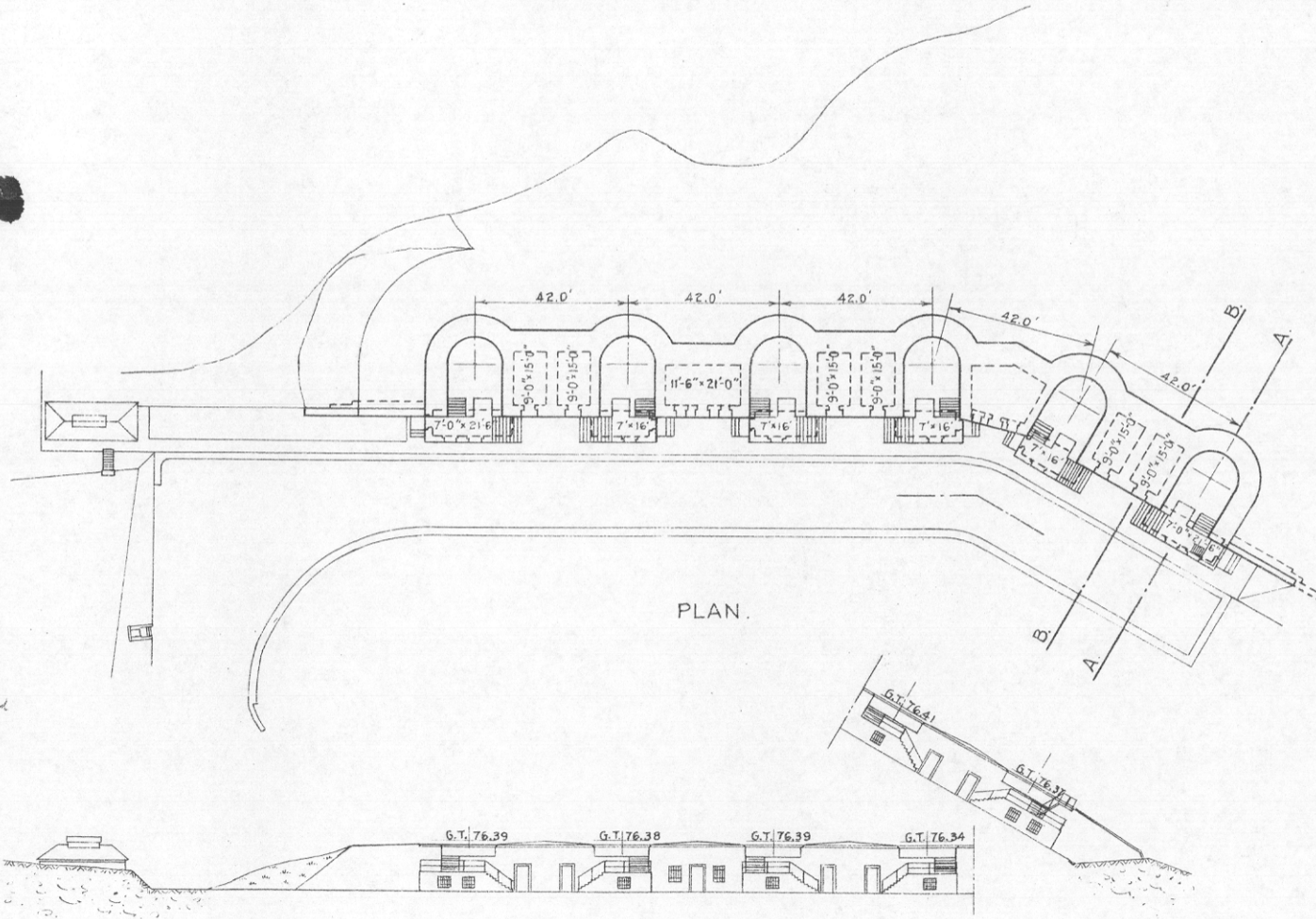
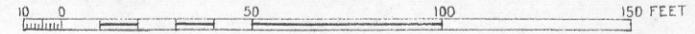
REAR ELEVATION.

REPORT OF COMPLETED WORKS - SEACOAST FORTIFICATIONS
(BATTERY PLAN)

CORRECTED TO DEC. 1919.

COAST DEFENSES OF SAN FRANCISCO, CAL.
FORT BAKER
BATTERY GEORGE YATES
NO. OF GUNS 6 : CALIBER 3^{IN.} : BARBETTE CARRIAGE

FORM-7



REAR ELEVATION.

COAST DEFENSES OF San Francisco, California

FORT Baker BATTERY George Yates No. of GUNS: 6 CALIBER: 3"

	EMPLACEMENT NUMBER 1.		EMPLACEMENT NUMBER 2.		EMPLACEMENT NUMBER 3.		EMPLACEMENT NUMBER 4.		EMPLACEMENT NUMBER 5.		EMPLACEMENT NUMBER 6.	
	FROM.	TO.	FROM.	TO.	FROM.	TO.	FROM.	TO.	FROM.	TO.	FROM.	TO.
1-a. Azimuth.	181° 25'		47° 05'		32° 08'		17° 12'		17° 12'		17° 12'	
b. Distance.	130.6'		41.5'		41.5'		41.5'		41.5'		41.5'	
2-a. Model of Gun.	1902		1902		1902		1902		1902		1902	
b. " " Carriage.	1902		1902		1902		1902		1902		1902	
c. Type of " "	Ped.		Ped.		Ped.		Ped.		Ped.		Ped.	
3- Elevations of.												
a. Gun trunnions (in battery.)	76.37		76.41		76.34		76.39		76.38		76.39	
b. Interior crest.	75.19		75.22		75.16		75.21		75.18		75.21	
c. Loading platform.	72.18		72.21		72.15		72.20		72.17		72.20	
4- Angle of depression.	4° 00'		4° 00'		4° 00'		4° 00'		4° 00'		4° 00'	
5- Limiting azimuths of field of fire as determined by:												
a. Construction of emplacement.	01	01	01	01	01	01	01	01	01	01	01	01
b. Interference by adjacent emplacements.	No interference											
c. Interference of other obstacles external to emplacement.	27° 30'	180° 00'	← No interference →						70° 00'	211° 00'		
d. Position of Ordnance stops.	No stops fitted											

NOTES.

1. Azimuth and distance of emplacement No. 2 are given with reference to No. 1; of No. 3, with reference to No. 2, etc. Azimuth and distance of No. 1, are given with reference to Carallos 2 { Latitude - 37° 50' - 434.3 meters.
Longitude - 122° 28' - 517.5 " }

3. Above plane of M. L. L. V.

5-c. Nature of obstacles: Topography in vicinity.

2-c. Use one of following abbreviations or designations: Dis.; Nondis.; Alt. gun-lift; Turret; Casemate; Ped.; B.P.

REPORT OF COMPLETED WORKS -- SEACOAST FORTIFICATIONS.
(Fire control or Torpedo Structures)

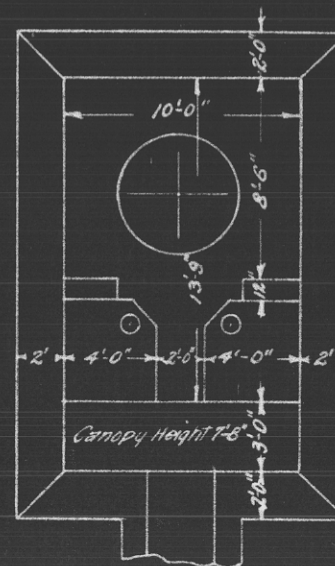
HARBOR
~~COAST~~ DEFENSES OF SAN FRANCISCO.
FORT.. **BAKER**
STRUCTURE.. **C.R.F. YATES**.....

Form 2. Corrected to NOV 1 1927

Location : About 480' north of Gun #1, Battery Yates.
Date of transfer : April 25, 1919.
Cost to that date : \$1,776.18
Type of construction :
(a) Roof : Canvas canopy.
(b) Remainder of bldg. : Concrete breast wall and floor.
How concealed : Not concealed.
How protected : Breast walls and earth.
Heights above concealment : 5.5'
Heights above protection : 5.5'
Conspicuous at 1300 yards : from sea.
Source of electric current : Duncan-Yates Power Plant.
Kilowatts required : .18 k.w.
Type of lighting fixtures : W.T. fix. l. c. cable, iron conduit.
How heated : Not heated.
Connected to water mains : No.
Connected to sewer : Yes.
Type of latrine : None.
Permanent or temporary installation : Permanent.
Present condition : Good.
Reference of site : 118.0
Reference of instrument axis : 118.05
Type of observing inst. : *(For Barr & Stroud 9' coincidence range finder.
Type and capacity of crane :
Max. dimensions of reel handled :

Type of data transmission : Telephone.
Date of transfer : With station
Cost of data transmission equipment : Supplied by S.C.
For tide stations give description of tide gauge :
For datum points give Forts from which visible :
For dormitories give stations served :
For cable hut give S.C. Type :

* Instrument not on hand.



C.R.F. YATES
FORT BAKER
Scale: - 1/8" = 1'