

89096

REPORT OF COMPLETED WORKS - SEACOAST FORTIFICATIONS

HARBOR DEFENSES OF SAN FRANCISCO.....

FORT Barry.....

STRUCTURE. SCR 296 (BONITA RIDGE - 9-114) KATHARINE

PART II

Corrected to February 1944

STRUCTURE: x...122° 31' 47.465".....
 Location (by coordinates) y...37° 49' 13.504".....
 Location (by site description) Bonita Ridge.....
 Date of transfer..23 March 1944.....
 Cost to that date..\$9,083.82.....
 Type (for observing stat.--tower, dug-in, cottages, etc.)...Tower.....
 Type of construction.....
 (a) Roof ...Antenna House copper; balance corr. iron.....
 (b) Remainder of bldg. Corrugated iron, steel tower concrete foundations.....
 How concealed Camouflage.....
 How protected .Not protected.....
 Height above concealment ..50'.....
 Height above protection ...50'.....
 Conspicuous at .1000....yards.....

UTILITIES:

Electric Power Yes.....
 Source of Post Power & Standby Generator Set*.....
 Characteristics: Voltage 120 Ac or DC..Phase Single...
 Kilowatts required..15 KW.....
 Type of lighting fixtures. CFS-1.....
 Heat.....
 How heatedNot heated.....
 Water Sewer.....
 Connected to water mains...No.....
 Connected to sewer.....No.....
 Type latrineNone.....

REFERENCE:

Reference of site.....271.0' MLLW.....
 Reference of instrument axis.....
 Elev. top of piers for antenna house = 275.0' MLLW

INSTRUMENTS & EQUIPMENT:

Type of observing inst. ...Installed by Signal Corps
 Type of plotting board

DATA TRANSMISSION:

Type Installed by others
 Date of transfer

TIDE STATION:

Give description of tide gauge

* One power unit installed in HO-1-A Power House

Existing service modified to pass through new transformer M.H.

1 - 25 KVA 1ø 60 cycle 2400/120/240 V Transformer installed in transformer M.H.

Paste on blue print showing plan of each story of building, giving principal dimensions, including height of ceiling.
 See Attached Print.

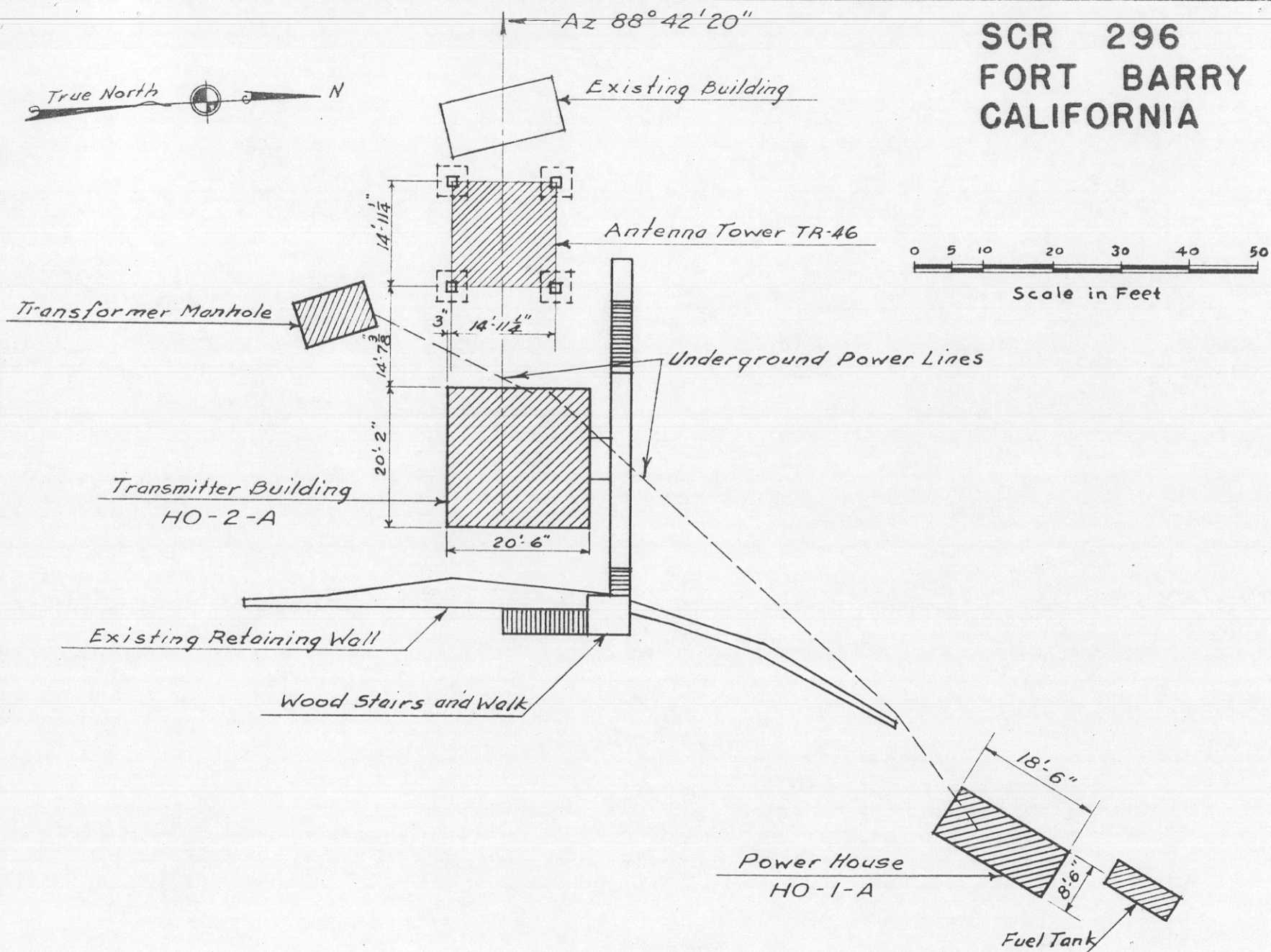
SCR 296-A declared obsolete, ltr. AG 17 Jan 46, file AG 413.44 (15 Jan. 46) OB-S-SPOPS.
 Tower and equipment to be disposed of. Buildings to be retained.

ED Form A-162B
16 Sept. 1943

FS-1316 Proj Card 164

Incl 1

SCR 296
FORT BARRY
CALIFORNIA



U.S. ENGINEER OFFICE, SAN FRANCISCO, CALIFORNIA 3-2-46

96096

SECRET

SITEK-1

600.914 (San Fran) 889096
REPORT OF COMPLETED WORKS - SEACOAST FORTIFICATIONS

HARBOR DEFENSES OF SAN FRANCISCO.....
FORT Berry.....
STRUCTURE. SCR 396.....

PART II Corrected to February 1944

STRUCTURE: x... 122° 31' 47.465"
Location (by coordinates) y... 37° 49' 13.504"
Location (by site description) Donita Ridge
Date of transfer... 17 March 1944
Cost to that date... \$7,083.22
Type (for observing stat.--tower, dug-in, cottages, etc.)... Tower
Type of construction.....
(a) Roof... Antenna House copper; balance corr. iron
(b) Remainder of bldg. Corrugated iron, steel tower concrete foundations.
How concealed Camouflage
How protected Not protected
Height above concealment... 50'
Height above protection... 50'
Conspicuous at 1000 yards.....

UTILITIES:
Electric Power Yes
Source of Post Power & Standby Generator
Characteristics: Voltage 120 Ac or Dc Ac Phase Single
Kilowatts required... 15 KW
Type of lighting fixtures... CRS-1
Heat
How heated... Not heated
Water Sewer
Connected to water mains... No
Connected to sewer... No
Type latrine... None

REFERENCE:
Reference of site... 271.0' M.H.
Reference of instrument axis.....

Elev. top of piers for antenna house = 275.0' M.H.
SECRET

INSTRUMENTS & EQUIPMENT:
Type of observing inst. Installed by Signal Corps
Type of plotting board

DATA TRANSMISSION:
Type Installed by others
Date of transfer

TIDE STATION:
Give description of tide gauge

* One power unit installed in NO-1-A Power House

Existing service modified to pass through new transformer M.H.

1 - 25 KVA 1/60 cycle 2400/120/240 V Transformer installed in transformer M.H.

Paste on blue print showing plan of each story of building, giving principal dimensions, including height of ceiling.
See Attached Print.

Incl. #1 ~ 48