

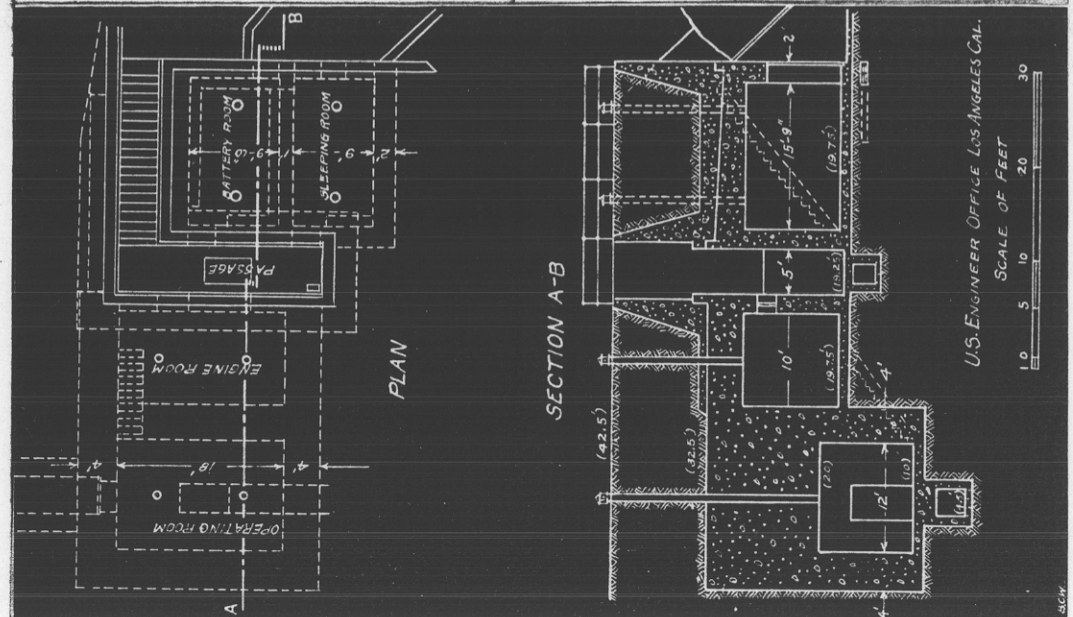
REPORT OF COMPLETED WORKS - SEACOAST FORTIFICATIONS.
(Fire Control or Torpedo Structures)

COAST DEFENSES OF SAN DIEGO, CAL.
FORT ROSECRANS
STRUCTURE MINING CASEMATE

Form 2.

Corrected to MAR 27 1919

Location	500 feet northerly from Batteries Wilkeson & Calef	Type of data transmission	Telephone
Date of transfer	May 31, 1901	Date of transfer	
Cost to that date	\$12,622.20	Cost of data transmission equipment	
Type of construction	Concrete	For tide stations give description of tide gauge	
(a) Roof	Concrete-earth covered	For datum points give Forts from which visible	
(b) Remainder of bldg.	Concrete	For dormitories give stations served	
How concealed	Earth covered	For cable hut give S.C. type	
How protected	Earth covered		
Height above concealment	0		
Height above protection	0		
Conspicuous at 10 yards			
Source of electric current	Generating set in casemate		
Kilowatts required	10 K.W.		
Type of lighting fixtures	11 lights .44 K.W.		
How heated	Water Tight & Non-Water tight		
Connected to water mains	Not heated		
Connected to sewer	Yes		
e of latrine	No		
Permanent or temporary installation	None		
Present condition	Permanent		
Reference of site	Good		
Reference of instrumental axis	42.50 feet		
Type of observing inst.	None		
Type of plotting board	None		
Type and capacity of crane	None		
Max. dimensions of reel handled	None		



REPORT OF COMPLETED WORKS - SEACOAST FORTIFICATIONS.
(Fire Control or Torpedo Structures)

COAST DEFENSES OF SAN DIEGO, CAL.
FORT ROSECRANS
* STRUCTURE TORPEDO STOREHOUSE

Form 2.

Corrected to MAR 27 1919

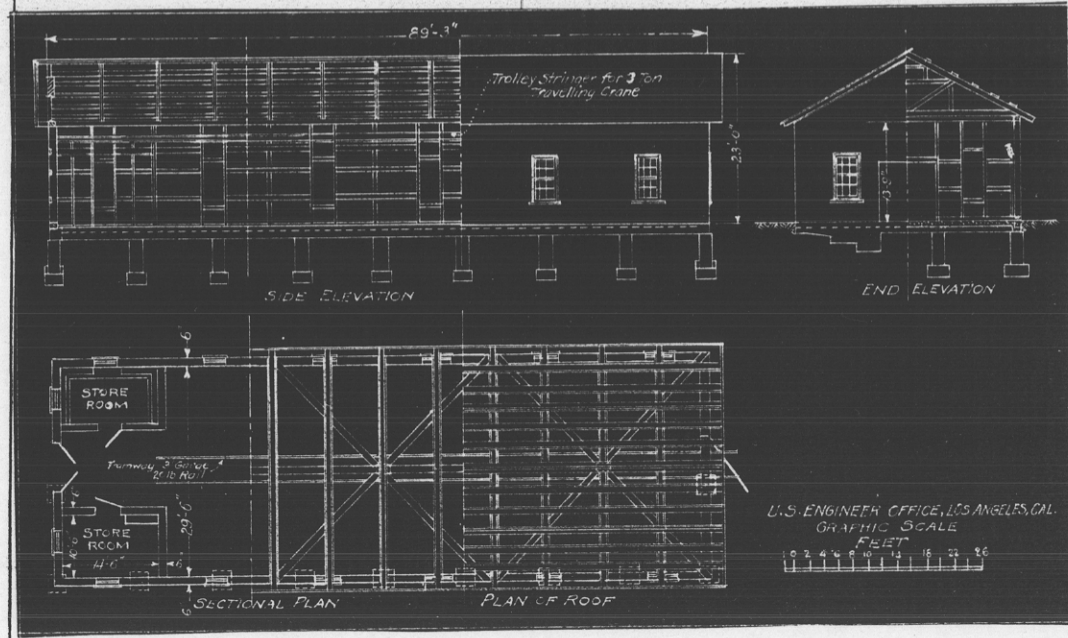
Location	700 ft. northerly from Batteries Wilkeson & Calef
Date of transfer	Feb. 15, 1911
Cost to that date	\$23,227.56*
Type of construction	
(a) Roof	Corrugated iron & wood frame
(b) Remainder of bldg.	Corrugated iron & wood frame
How concealed	Concealment painting
How protected	Not protected
Height above concealment	17' 6"
Height above protection	17' 6"
Conspicuous at 7000 yards from	from half the field of fire
Source of electric current	Commercial power, casemate, & Central Power House
Kilowatts required	.44 K.W.
Type of lighting fixtures	11 lights Non-Water Tight
How heated	Not heated
Connected to water mains	Yes
Connected to sewer	No
Type of latrine	None
Permanent or temporary installation	Permanent
Present condition	Good
Reference of site	9.68 ft.
Reference of instrumental axis	None
Type of observing inst.	None
Type of plotting board	None
Type and capacity of crane	3 Ton traveling crane
Max. dimensions of reel handled	No. 33, 40 & 42 Mines.
Cable Tank, Tramway and Addit	* Cost includes Storehouse, Loading Room, tion to Mining Casemate.

Type of data transmission	
Date of transfer	
Cost of data transmission equipment	
For tide stations give description of tide gauge	
For datum points give Forts from which visible	
For dormitories give stations served	
For cable hut give S. C. type	

Telephone

Temporarily being used as an "Engr. Storehouse", see Index Plat Rev of Oct 30, 1934

* Transfer to GM authorized by Sec. of War 10/15/91. 600.1 (Fr. Rosecrans) 1.



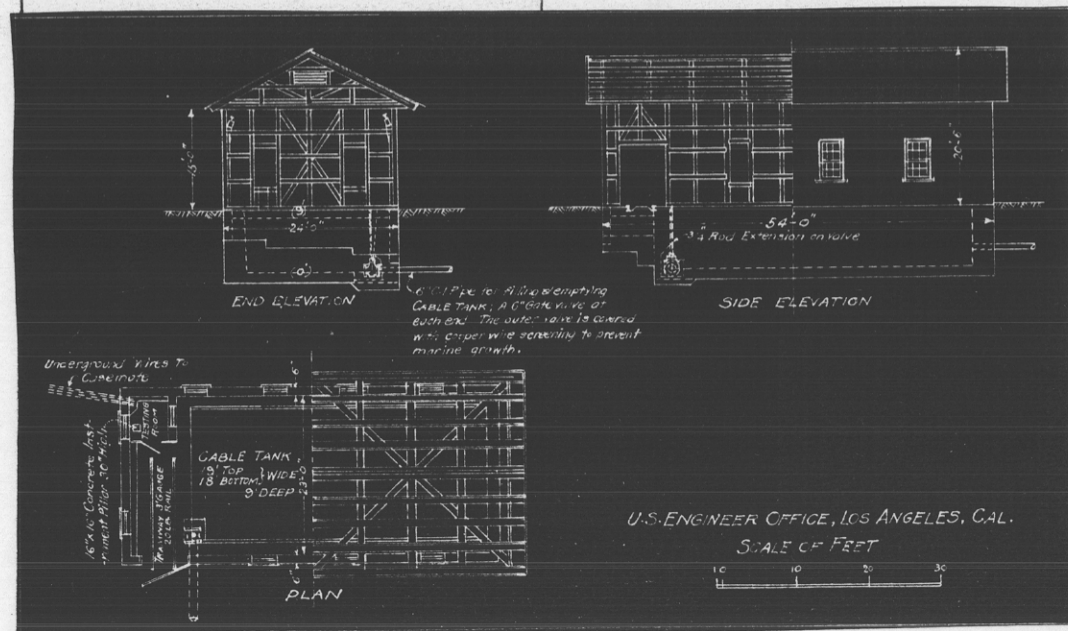
REPORT OF COMPLETED WORKS -- SEACOAST FORTIFICATIONS.
(Fire Control or Torpedo Structures)

COAST DEFENSES OF SAN DIEGO, CAL.
FORT ROSECRANS
* STRUCTURE CABLE TANK

Form 2.

Corrected to MAR 27 1919

Location	800 ft. northerly from Batteries Wilkeson & Calef	Type of data transmission		Telephone	
Date of transfer	Feb. 15, 1911	Date of transfer		Temporarily being used as an "Engr. Carpenter Shop", See Index Plat. Rev. of Oct. 30, 1934.	
Cost to that date	*Cost included with cost of Torpedo Storehouse	Cost of data transmission equipment			
Type of construction	Corrugated iron & wood frame do	For tide stations give description of tide gauge	For tide stations give description of tide gauge	* Transfer to QM authorized by Sec. of War 10/15/41. 600.1 (Ft. Rosecrans) 1.	
(a) Roof					
(b) Remainder of bldg.		For datum points give Forts from which visible			
How concealed	Concealment painting	For dormitories give stations served			
How protected	Not protected	For cable hut give S. C. type			
Height above concealment	17 ft.				
Height above protection	17 ft.				
Conspicuous at 7000 yards					
Source of electric current	(mate. & Central Power House, Commercial power, mining case)				
Kilowatts required	.16 K.W.				
Type of lighting fixtures	4 lights, Non-Water Tight				
How heated	Not heated				
Connected to water mains	Yes				
Connected to sewer	No				
Type of latrine	None				
Permanent or temporary installation	Permanent				
Present condition	Good				
Reference of site	9.68 ft.				
Reference of instrumental axis	None				
Type of observing inst.	None				
Type of plotting board	None				
Type and capacity of crane	5-Ton traveling crane, hand operated.				
Max. dimensions of reel handled	6'0" Dia. x 5'0" Mine cable reel.				



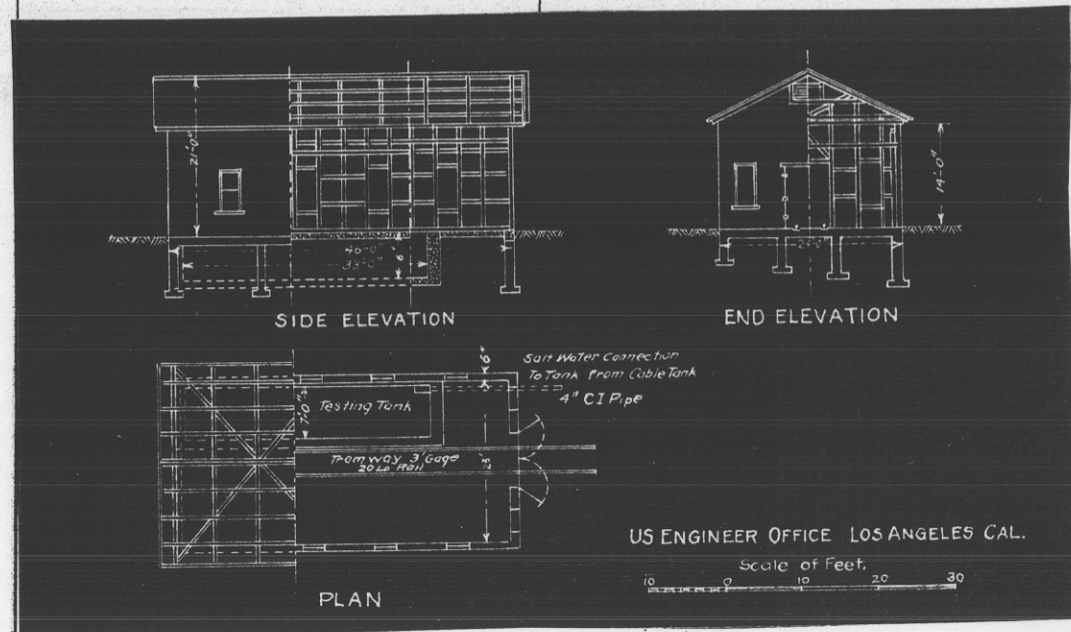
REPORT OF COMPLETED WORKS - SEACOAST FORTIFICATIONS.
(Fire Control or Torpedo Structures)

COAST DEFENSES OF SAN DIEGO, CAL.
FORT ROSECRANS
* STRUCTURE LOADING ROOM

Form 2.

Corrected to MAR 27 1919

Location	900' northerly from Batteries Wilkeson & Calef	Type of data transmission		Telephone	
Date of transfer	Feb.15, 1911	Date of transfer		<p>Temporarily being used as an "Engr. Blacksmith Shop," See Index Plat Rev. of Oct. 30, 1934.</p> <p>* Transfer to GM authorized by Sec. of War 10/15/91. 600.1 (Ft. Rosecrans)-1.</p>	
Cost to that date	*Cost included with cost of Torpedo Storehouse.	Cost of data transmission equipment			
Type of construction	Corrugated iron & wood frame	For tide stations give description of tide gauge			
(a) Roof	do	For datum points give Forts from which visible			
(b) Remainder of bldg.	do				
How concealed	Concealment painting.				
How protected	Not protected	For dormitories give stations served			
Height above concealment	18'	For cable hut give S. C. type			
Height above protection	18'				
Conspicuous at 7000 yards					
Source of electric current	Commercial power, mining casemate & Cent. Power House				
Kilowatts required	.28 K.W.				
Type of lighting fixtures	7 lights Non-Water Tight				
How heated	Not heated				
Connected to water mains	Yes				
Connected to sewer	No				
Use of latrine	None				
Permanent or temporary installation	Permanent				
Present condition	Good				
Reference of site	9.68 ft.				
Reference of instrumental axis	None				
Type of observing inst.	None				
Type of plotting board	None				
Type and capacity of crane	3-Ton traveling crane, hand operated.				
Max. dimensions of reel handled	5'-0" x 6'-0" Dia.				



REPORT OF COMPLETED WORKS - SEACOAST FORTIFICATIONS.
(Fire control or Torpedo Structures)

COAST DEFENSES OF SAN DIEGO, CAL.
FORT ROSECRANS.
STRUCTURE MINE PRIMARY (M¹)

Form 2.

Corrected to February 24, 1920.

Location	500 ft. westerly from Battery McGrath. (as modernized)	Type of data transmission	Telephone.
Date of transfer	October, 1909. (Feb. 24, 1920)	Date of transfer	
Cost to that date	\$1,975.60 (\$2,114.01)	Cost of data transmission equipment	
Type of construction		For tide stations give description of tide gauge	
(a) Roof	Gal. iron	For datum points give Forts from which visible	
b) Remainder of bldg.	Concrete	For dormitories give stations served.	
How concealed	Partly concealed	For cable hut give S. C. type	
How protected	Partly protected.		
Height above concealment	2 feet		
Height above protection	4 feet		
Conspicuous at 7000 yards			
Source of electric current	Battery White		
Kilowatts required	6 lights, .24 kw.		
Type of lighting fixtures	Non water tight		
How heated	Not heated.		
Connected to water mains	No.		
Connected to sewer	No.		
Type of latrine	None.		
Permanent or temporary installation	Permanent.		
Present condition	Good.		
Reference of site	256.8 feet.		
Reference of instrumental axis	261.83 feet.		
Type of observing inst.	Lewis D.P.F. Model 1907, Type DD.		
Type of plotting board	Submarine plotting board No. 27.		
Type and capacity of crane	None.		
Max. dimensions of reel handled	None.		

2,114.01
1,975.60
138.41

