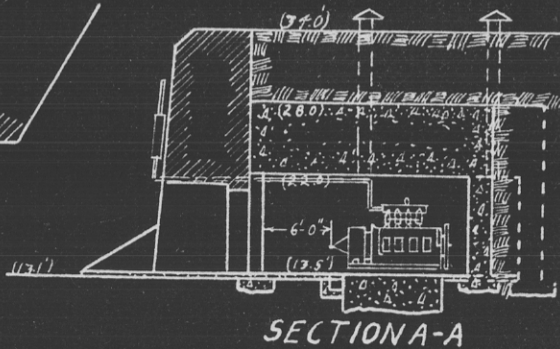
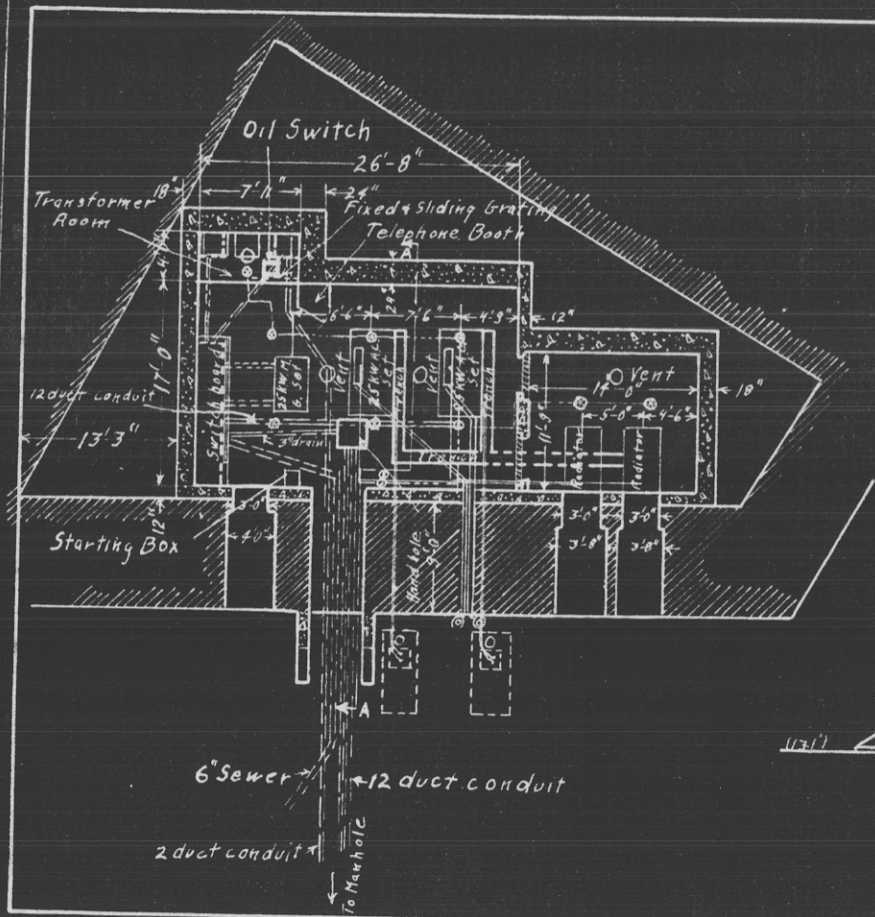
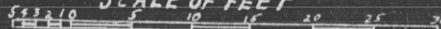


POWER ROOM, BATTERY CALEF
FORT ROSECRANS, CAL.

U.S. Engineer Office, Los Angeles Cal.

SCALE OF FEET



PORT OF COMPLETED WORKS - SEACOAST FORTIFICATIONS
(Electric Plants)

COAST DEFENSES OF SAN DIEGO, CAL.
FORT ROSECRANS
POWER FOR SUBSTATION AT BATTERY CALEF

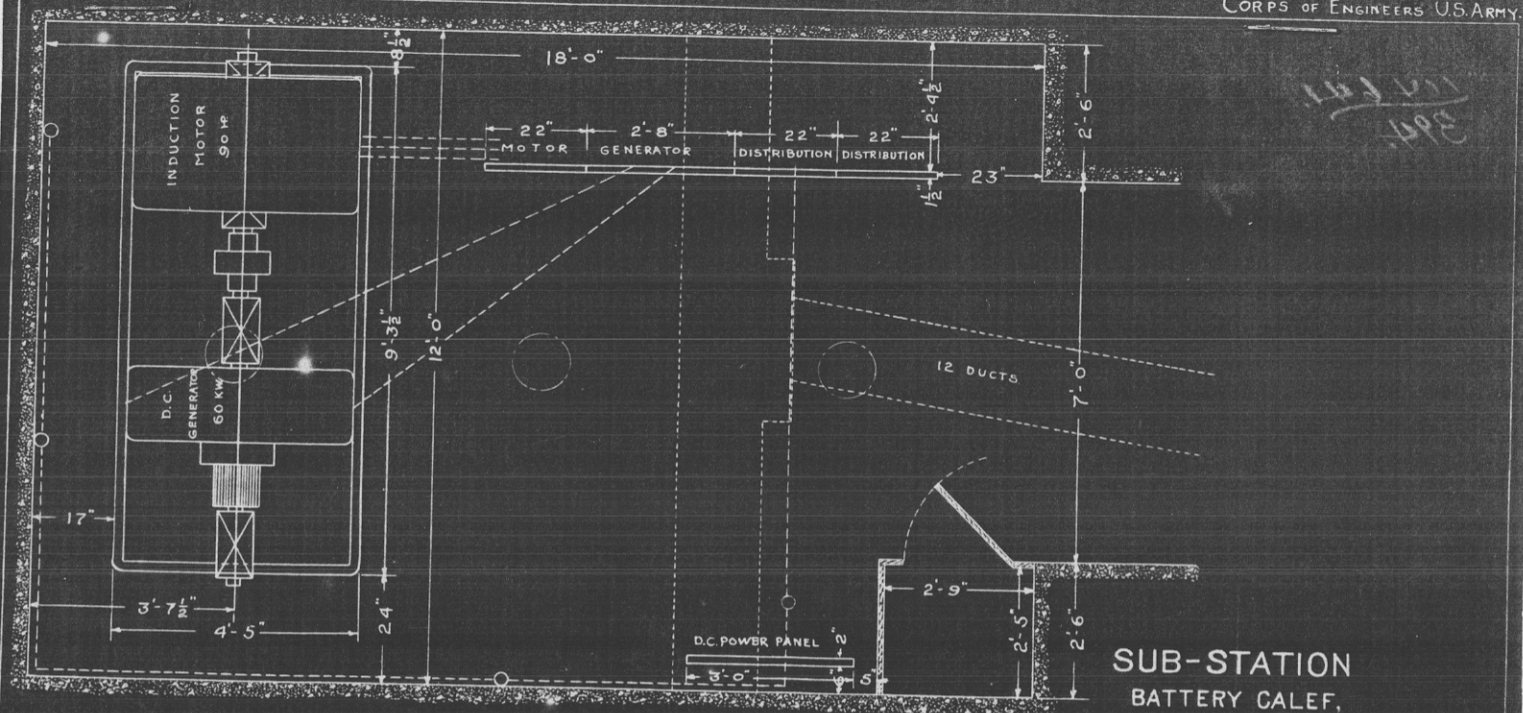
Form 5. Corrected to MAR 27 1919

	Serial No.	Type	Size	Mfgr.	Date of transfer	Cost	Con- dition	RPM	Belt or Direct Drive	Radiator for Engine No.	Fuel	Switchboard	
												Material	No. of Panels
Boiler No.1	No Boiler												
No.2													
No.3													
Engine No.1	No Engine												
No.2													
No.3													
Generator	No Generator												
No.1													
No.2													
No.3													
Radiator	No Radiator												
No.1													
No.2													
No.3													
Motor-generator													
No.1 Motor	290016	3 phase	90 HP.1100	Westinghouse									
		volt.speed	575RPM	Elec.Co.									
No.2 Gen.	292031	D.C.60 kw.	125 v.	"									
		480 A											
No.3													
Switchboard			4 panel										
Storage battery	No Storage Battery												
Transformer													
No.1	187029	O.D.Class	200,Style										
		10104-3	phase.										
No.2													
No.3													
Auxiliaries													
No.1													
No.2													
No.3													

DISTRIBUTION OF KW.

WAR DEPARTMENT

CORPS OF ENGINEERS U.S. ARMY.



Note:
Power from Central Power Plant.

SUB-STATION
BATTERY CALEF,
FORT ROSECRANS, CAL.

In 1 sheet
Scale of feet. Scale $\frac{1}{24}$

U.S. Engineer Office, Los Angeles, Cal. May 19, 1917.
Submitted:
Chas. T. Leeds
Capt. U.S. Army, Retired.
Drawn by F.C.D. File No. 8-22-3A Transmitted with letter dated May 28, 1917.

REPORT OF COMPLETED WORKS - SEACOAST FORTIFICATIONS
(Electric Plants)

COAST DEFENSES OF SAN DIEGO, CAL.
FORT ROSEGRANS
POWER FOR SUBSTATION AT BATTERY CALEF

Form 5.

Corrected to MAR 27 1919

	Serial No.	Type	Size	Mfr.	Date of transfer	Cost	Con- dition	RPM	Belt or Direct Drive	Radiator for Engine No.	Fuel	Switchboard	
												Mate- rial	No. of Panels
Boiler No.1	No Boiler												
No.2													
No.3													
Engine No.1	No Engine												
No.2													
No.3													
Generator	No Generator												
No.1													
No.2													
No.3													
Radiator	No Radiator												
No.1													
No.2													
No.3													
Motor-generator													
No.1 Motor	290016	3 phase	90 HP.1100 volt.speed 575RPM	Westinghouse Elec.Co.									
No.2 Gen.	292031	D.C.	60 kw.125 v. 480 A	"									
No.3													
Switchboard	4 panel												
Storage battery	No Storage Battery												
Transformer													
No.1	187029	O.D.	Class 200, Style 10104-3 phase.										
No.2													
No.3													
Auxiliaries													
No.1													
No.2													
No.3													

DISTRIBUTION OF KW.

With 675.1 (SD) F21

Sheet No. 1.

REPORT OF COMPLETED WORKS - SEACOAST FORTIFICATIONS.
(Electric Plants)

COAST DEFENSES OF SAN DIEGO, CALIF.
FORT ROSECRANS
POWER FOR BATTERIES WILKESON AND CALEF.

Form 5.

Corrected to June 16, 1920

	Serial No.	Type	Size	Mfr.	Date of transfer	Cost	Con- dition	RPM	Belt or Direct Drive	Radiator for Engine No.	Fuel	Switchboard		
												Material	No. of Panels	
Boiler No. 1	NO BOILERS.													
Engine No. 1	11262	GM 12, Form A 31	HP 43/54	Gen.Elec.	June 16,	\$9370.07	Good	600	Direct	Volts 115 AC	Cycle 60	Gas.	Wire 3	Used for OM Pow. No (suitable)
Engine No. 2	11014	GM 12, Form A 31	HP 43/54	Gen.Elec.	1920		Good	600	Direct	115 AC	60	Gas.	3	No. (suitable)
Generator														
Generator No. 1	1423846	A.T.I. 12-31-600 3 ph. 60 cy.	156 Amp. 115 V. 25 KW	Gen.Elec.			Good	600	Direct	See 675.1 (9th C.A.) 1				
Generator No. 2	1423847	A.T.I. 12-31-600 3 ph. 60 cy.	156 Amp. 115 V. 25 KW	Gen.Elec.			Good	600	Direct					
Exciter No. 1	911113	MP 6-2.5-600 Form E.	20 Amp. 126 V.	Gen. Elec.			Good	600	Direct					
Exciter No. 2	911114	MP 6-2.5-600 Form E	20 Amp. 126 V.	Gen.Elec.			Good	600	Direct					
Fan No. 1	17092	FF 54-B-9		Gen.Elec.			Good	900	Direct	No. 1				
Fan No. 2	17091	FF 54-B-9		Gen.Elec.			Good	900	Direct	No. 2				
Motor No. 1	1483577	KT 201-8-3-900 Form C, 60 cy.	16.8 Amp. 115 V.	Gen.Elec.			Good	900	Direct					
Motor No. 2	1483574	KT 201-8-3-900 Form C, 60 cy.	16.8 Amp. 115 V.	Gen.Elec.			Good	900	Direct					
Voltage Regulator	11404	TA 125, Form F 2		Gen.Elec.			Good							
Motor Generator														
I Motor	2246716	CS Constant Sp. 3 ph. 60 cy.	HP 38.3	W.E. & M. Co.			Good	1150	Direct					
D.C. Generator	2246720	S K compound wound	25 KW, 217 A., 115 V.	W.E. & M. Co.			Good	1150	Direct					
Auto starter	244766		35-50 HP 220 V.	W.E. & M. Co.			Good							
Switchboard													Marble	6
Transformer														
Transformer No. 1	Style No. L 83820D	Type S 2200/ 1100 and 220/ 110 V.	20 KVA	W.E. & M. Co.			Good							

REPORT OF COMPLETED WORKS - SEACOAST FORTIFICATIONS.
(Electric Plants)

COAST DEFENSES OF SAN DIEGO, CALIF.
FORT ROSECRANS
POWER FOR BATTERIES WILKESON AND CALEF.

Form 5.

Corrected to June 16, 1920.

	Serial No.	Type	Size	Mfgr.	Date of transfer	Cost	Con- dition	RPM	Belt or Direct Drive	Radiator for Engine No.	Fuel	Switchboard Mate- rial	No. of Panels
Transformer No. 2	Style No. L 83820 D	Type S 2200/ 1100 and 220/ 110 V.	20 KVA	W.E. & M. Co.	June 16, 1920		Good						
No. 3	Style No. L 83820 D	Type S 2200/ 1100 and 220/ 110 V.	20 KVA	W.E. & M. Co.			Good						
Oil Switch Panel	201331			Gen. Elec.									
Oil Circuit Breaker	580712	Type F 129259 Form K 12	200 A. 3300 V.	Gen. Elec.			Good						

DISTRIBUTION OF KW.

Lights, Wilkeson and Calef 5.68 k.w.; lights, McGrath .84 k.w.; lights Fetterman .52 k.w.;
for EACH of four (4) hoist motors 7.70 k.w.