

600.9144 (San Diego) 115293

REPORT OF COMPLETED WORKS - SEACOAST FORTIFICATIONS
(Fire Control Structure)

115293 Dupl sent to Sig Corps
~~CONFIDENTIAL~~

HARBOR DEFENSES OF SAN DIEGO
FORT ROSECRANS
STRUCTURE SCR-296 "LA JOLLA"
for Bul 126

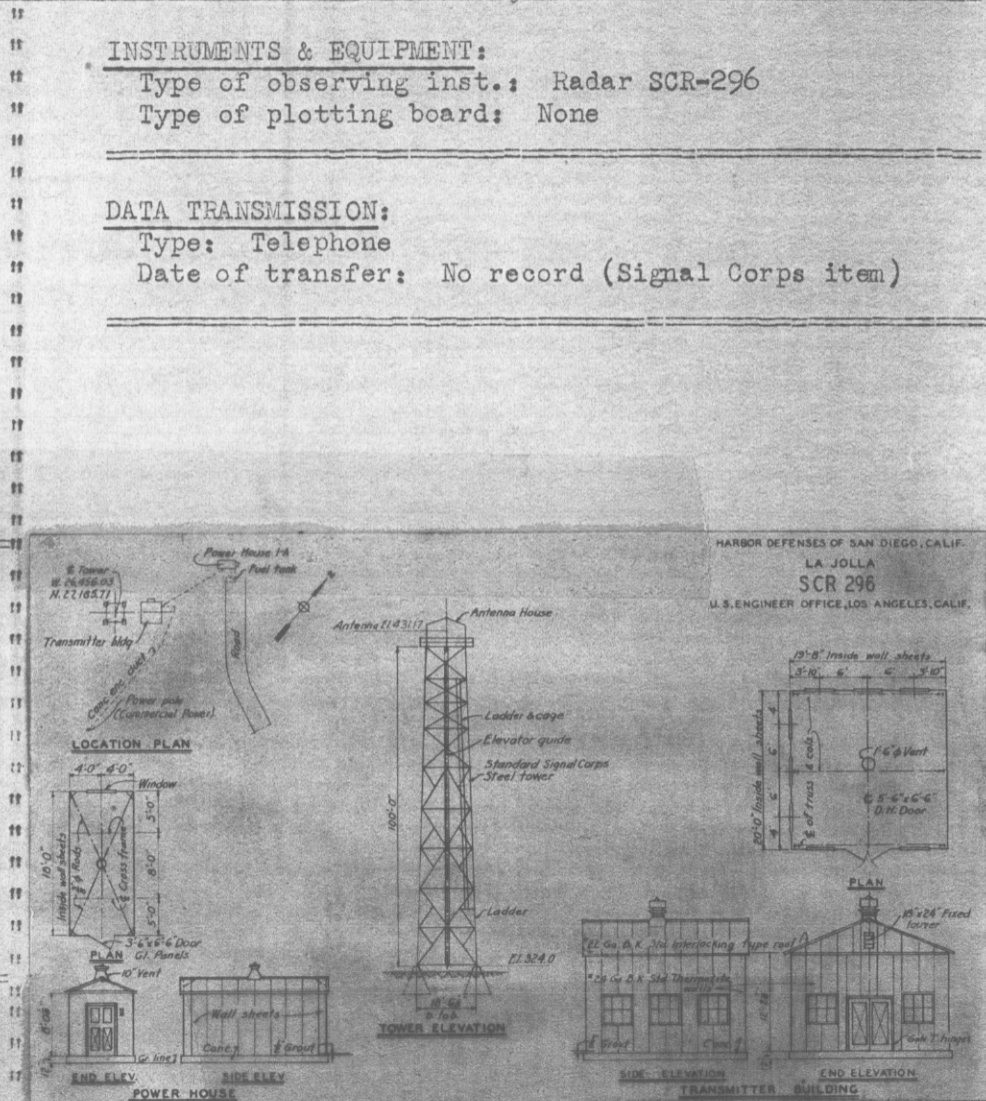
SPEKM-1

Part II Corrected to 22 November 1944

STRUCTURE: W 26,456.03
Location (by coordinates) N 27,185.71
Location (site description) La Jolla
Date of transfer: 14 September 1944
Cost to that date: \$15,787.08
Type: Standard Signal Corps 100' tower, Type TR-18
Type of construction
(a) Power & transmitter houses: 22 ga. Thermotite
(b) Antenna house: Wood
(c) Tower: Steel
How concealed: Simulated water tank & tone-down paint
How protected: Not protected
Height above concealment: 110' (approx.) above ground
Height above protection: - -
Conspicuous at 2000 yards

UTILITIES:
Electric power
Source of: Commercial & 1 - 25 KVA auxiliary generator
Characteristics: Voltage 120 AC 1 - phase
Kilowatts required: 16.3
Type of lighting fixtures: None
Heat
How heated: Not heated
Water sewer
Connected to water mains: No
Connected to sewer: No
Type latrine: None

REFERENCE:
Reference of site: 324.0
Reference of antenna axis: 431.17
Datum plane: Mean Lower Low Water
Origin of coordinates: U.S.C. & G.S. sta. "Old Town"
SCR 296-A declared obsolete, ltr. AG 17 Jan. 46, file
AG 413.44 (15 Jan. 46) OB-S-SPOPS.
Tower and equipment to be disposed of. Bldgs. to be retained.



~~CONFIDENTIAL~~

REPORT OF COMPLETED WORKS - SEACOAST FORTIFICATIONS
(Fire Control Structure)

HARBOR DEFENSES OF SAN DIEGO
FORT ROSECRANS
STRUCTURE: SCR-296 (SITE "A")
For Battery Strong.

Part II

Corrected to 10 March 1945

~~CONFIDENTIAL~~

STRUCTURE: W 20,306.75
Location (by coordinates) S 16,548.00
Location (site description) North Ft. Rosecrans (Site No. 5)
Date of transfer: 15 March 1944
Cost to that date: \$10,524.29 (see "Remarks")
Type: 25 ft. steel tower
Type of construction
(a) Power & Transmitter Houses: 24 ga. Thermotite
(b) Antenna House: Wood
(c) Tower: Steel
How concealed: Simulated water tank
How protected: Not protected
Height above concealment: Approx. 30' (above ground)
Height above protection: - - -
Conspicuous at 400 yards

UTILITIES:

Electric power
Source of: Commercial & 1 - 25 KVA auxiliary generator
Characteristics: Voltage 120/240 AC 1-phase 60 cycle
Kilowatts required: 16.3
Type of lighting fixtures: None
Heat
How heated: Not heated
Water sewer
Connected to water mains: No
Connected to sewer: No
Type latrine: None

REFERENCE:

Reference of site: Elevation 335
Reference of antenna: 368.00
Datum is Mean Lower Low Water
Origin of local coordinates: U.S.C. & G.S. Sta. "Old Town"
SCR 296-A declared obsolete, letter AG 17 Jan. 46, file
AG 413.44 (15 Jan. 46) OB-S-SPOPS. Tower and equipment
to be disposed of. Buildings to be retained.

INSTRUMENTS & EQUIPMENT:

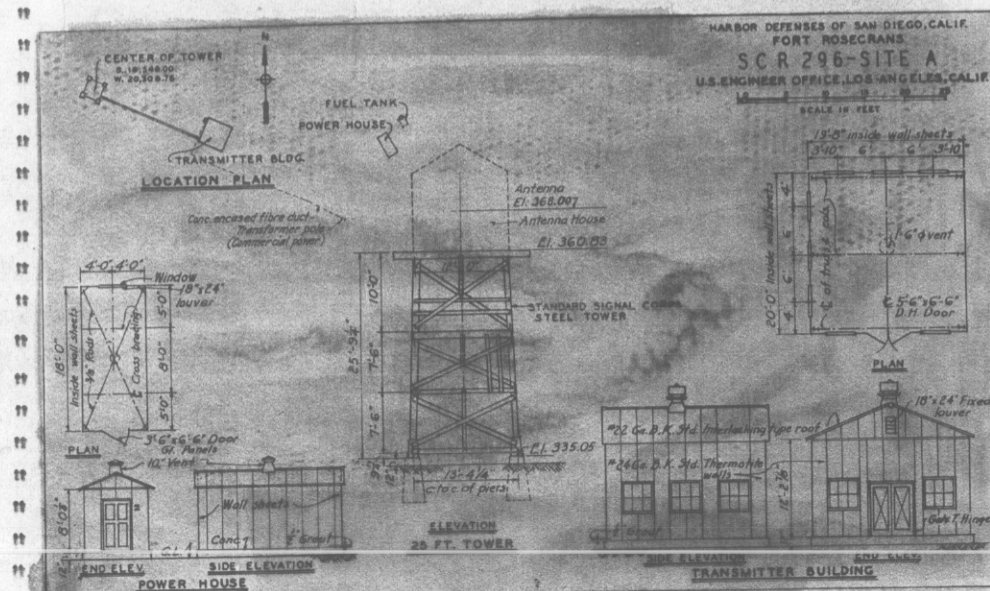
Type of observing inst.: SCR-296
Type of plotting board: None

DATA TRANSMISSION:

Type: Telephone
Date of transfer: No record (Signal Corps item)

REMARKS:

Cost includes \$ 2,524.46 for commercial power,
Job No. Fort Rosecrans FS-11, Directive Consecutive
No. FS-870

~~CONFIDENTIAL~~

REPORT OF COMPLETED WORKS - SEACOAST FORTIFICATIONS
(Fire Control Structure)

HARBOR DEFENSES OF SAN DIEGO
FORT ROSECRANS
STRUCTURE: SCR-296 (SITE "C")
For Btry 238

Part II

Corrected to 15 March 1945

~~CONFIDENTIAL~~

STRUCTURE: W 16,853.60
Location (by coordinates) S 30,859.56
Location (site description) Point Loma (Site No. 8)
Date of transfer: 4 September 1944
Cost to that date: \$8,611.22
Type: 50 ft. tower
Type of construction
(a) Power & transmitter houses: 24 ga. Thermotite
(b) Antenna house: Wood
(c) Tower: Steel
How concealed: Simulated water tank
How protected: Not protected
Height above concealment: Approx. 60 ft. (above ground)
Height above protection: - - -
Conspicuous at 500 yards

INSTRUMENTS & EQUIPMENT:

Type of observing inst.: SCR-296
Type of plotting board: None

DATA TRANSMISSION:

Type: Telephone
Date of transfer: No record (Signal Corps item)

UTILITIES:**Electric power**

Source of: Commercial & 1 - 25 KVA auxiliary generator
Characteristics: Voltage 120/240 AC 1-phase 60 cycle
Kilowatts required: 16.3
Type of lighting fixtures: None

Heat

How heated: Not heated

Water sewer

Connected to water mains: No

Connected to sewer: No

Type latrine: None

REFERENCE:

Reference of site: Elevation 129

Reference of antenna: 187.43

Datum is Mean Lower Low Water

Origin of local coordinates: U.S.C. & G.S. Sta. "Old Town"

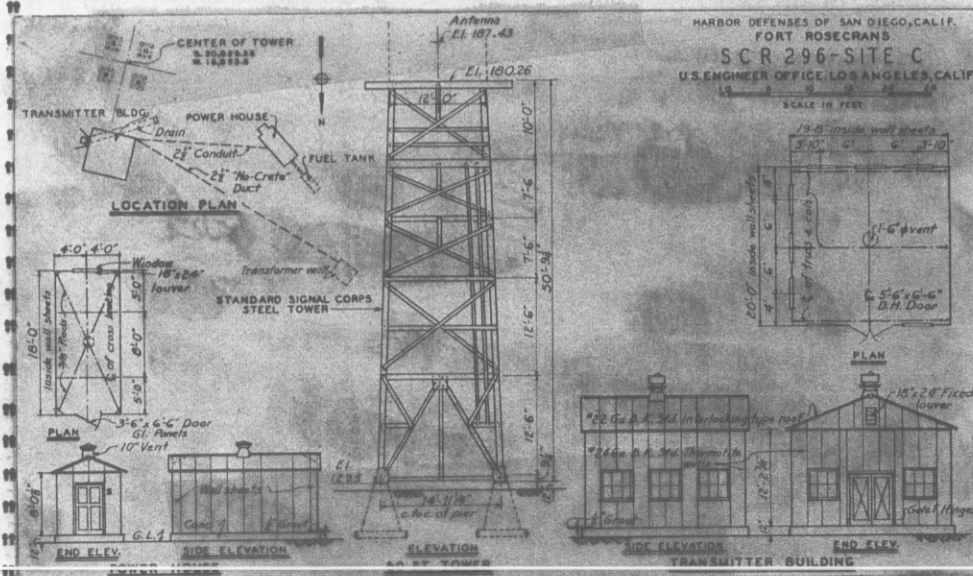
SCR 296-A declared obsolete, ltr AG 17 Jan. 46, file

AG 413.44(15 Jan. 46)OB-S-SPOPS.

Tower and equipment to be disposed of.

Buildings to be retained.

125477

~~CONFIDENTIAL~~

6001914 (San Diego) 113353

SPEKM-1

REPORT OF COMPLETED WORKS - SEACOAST FORTIFICATIONS
(Fire Control Structure)

HARBOR DEFENSES OF SAN DIEGO
FORT ROSECRANS
STRUCTURE: BC₇ B₇¹ S₇¹ - SCR 296 (Combined)

Part II Corrected to 8 November 1944

~~CONFIDENTIAL~~ 113353

*L for 739
at Ft Emory*

STRUCTURE: E 18,115.65
Location (by coordinates) S 55,806.78
Location (site description) Site No. 12 (Fort Emory)
Date of transfer: 4 October 1944
Cost to that date: \$29,893.52
Type: 2 level steel tower; SCR-296 on top
Type of construction
(a) Roof: Steel
(b) Remainder of bldg.: Steel
How concealed: Simulated water tank
How protected: Not protected
Height above concealment: 125' above ground (approximately)
Height above protection: - -
Conspicuous at 1000 yards

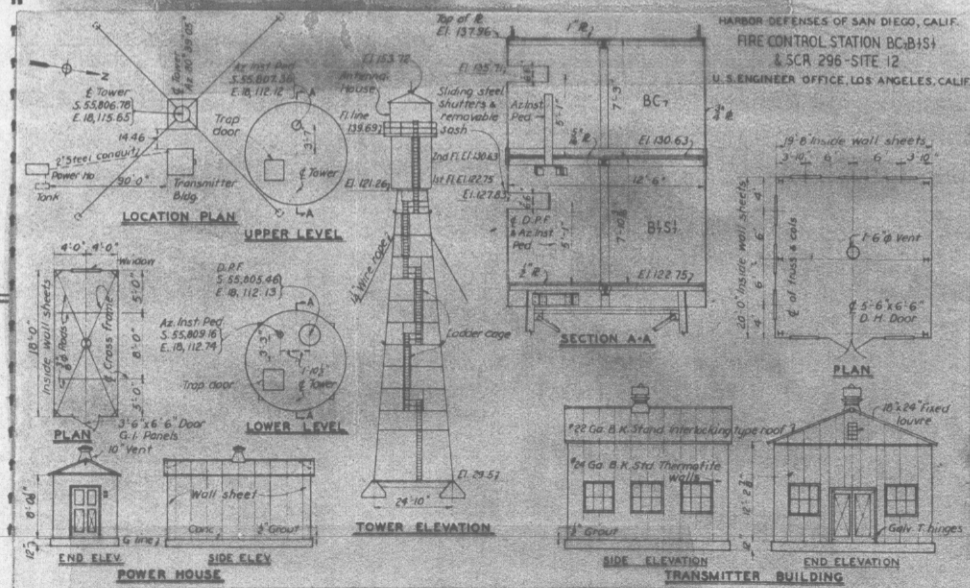
INSTRUMENTS AND EQUIPMENT:
Type of observing inst.: 2-azimuth; 1-DPF; 1-SCR 296
Type of plotting board: None

DATA TRANSMISSION:
Type: Telephone
Date of transfer: No record (Signal Corps item)

REMARKS:
SCR-296 (antenna): Elevation 146.86
BC₇ (azimuth instrument variable) Center of slot:
Elevation 135.71
B₇¹ (axis of D.P.F. instrument): Elevation 127.83

UTILITIES:
Electric power
Source of: Commercial & 1 - 25KVA auxiliary generator
Characteristics: Voltage 125 AC 1 - phase
Kilowatts required: 18.0 (16.3 for SCR-296)
Type of lighting fixtures: Not lighted
Heat
How heated: Not heated
Water sewer
Connected to water mains: No
Connected to sewer: No
Type latrine: None

REFERENCE:
Reference of site: Elevation 29 (approximately)
Reference of instrument axis: See "REMARKS"
Datum: Mean Lower Low Water
Origin of coordinates: U.S.C. & G.S. sta "Old Town"



FS-1732

~~CONFIDENTIAL~~

REPORT OF COMPLETED WORKS - SEACOAST FORTIFICATIONS
(Fire Control Structure)

HARBOR DEFENSES OF SAN DIEGO
FORT ROSECRANS
STRUCTURE: SCR-296 (SITE "D")

SPEKM-1

124556

~~CONFIDENTIAL~~

Part II Corrected to 8 March 1945

STRUCTURE: E 25,001.36
Location (by coordinates) S 77,902.92
Location (site description) Mexican Border
Date of transfer: 12 January 1945
Cost to that date: \$20,870.02 (see also "Remarks")
Type: 25 ft. steel Signal Corps tower
Type of construction
(a) Power & Transmitter Houses: 24 ga. Thermotite
(b) Antenna House: Wood
(c) Tower: Steel
How concealed: Tone down paint & simulated water tank
How protected: Not protected
Height above concealment: Approximately 35' (above grd)
Height above protection: - - -
Conspicuous at 500 yards

UTILITIES:

Electric power
Source of: Commercial & 1 - 25 KVA auxiliary generator
Characteristics: Voltage 120/240 AC 1 - phase 60 cycle
Kilowatts required: 16.3
Type of lighting fixtures: None
Heat
How heated: Not heated
Water sewer
Connected to water mains: No
Connected to sewer: No
Type latrine: None

REFERENCE:

Reference of site: Elevation 340
Reference of antenna: 373.80
Datum: Mean Lower Low Water
Origin of local coordinates: U.S.C. & G.S. Sta.
"Old Town"
SCR 296-A declared obsolete, ltr. AG 17 Jan. 46, file
AG 413.44 (15 Jan 46)OB-S-SPOPS.
Tower and equipment to be disposed of.
Bldgs. to be retained.

INSTRUMENTS & EQUIPMENT:

Type of observing inst.: Radar SCR-296
Type of plotting board: None

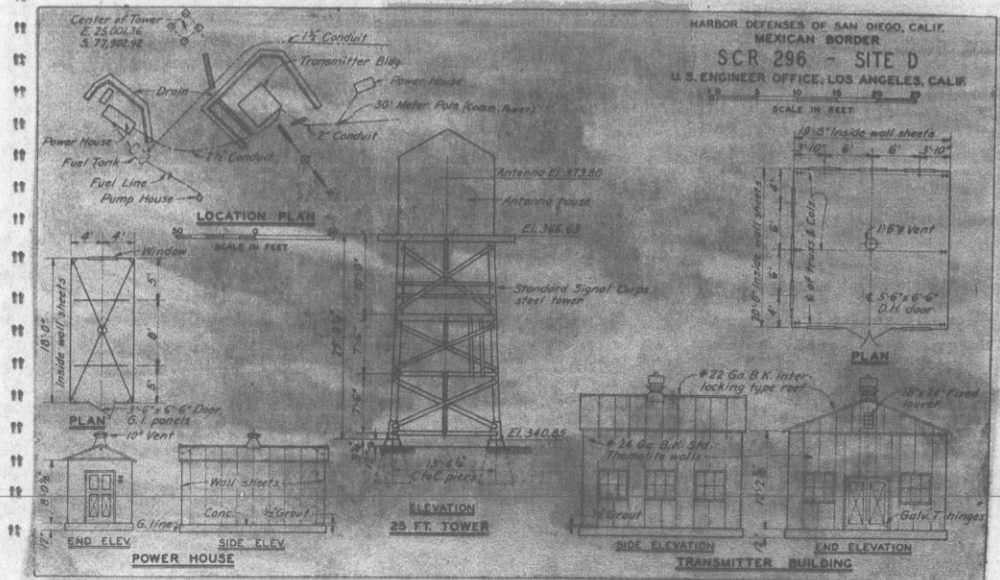
DATA TRANSMISSION:

Type: Telephone
Date of transfer: No record (Signal Corps item)

REMARKS:

Cost includes \$2,538.60, fencing, Job No. Mexican Border FS-5, Directive Consecutive No. FS-1089; \$2,331.76 for commercial power, Job No. Mexican Border FS-8, Directive Consecutive No. FS-1350.

Incl 1



~~CONFIDENTIAL~~

124556

Part VI (Modified)

Corrected to 7 March 1945

STRUCTURE: INCLINE HOIST - SCR 296, SITE "D"

INCLINE ELEVATOR HOIST: Authorized under Job No. Mexican Border FS-6, Directive Consecutive No. FS-1250
Date of transfer: 12 January 1945; Cost: \$5,198.26

INCLINE: 4" x 4" wooden stringers
Approximate length 325'

HOIST HOUSE: 8' x 12'; 1" x 8" wood shiplap sheathing

HOIST: Otis Elevator Company, single drum, 3 sheath,
Serial No. 101479

MOTOR: Sterling Cross Line, 10 H.P., 60 cycle, 3-phase,
220/440 volts, Serial No. 141795

Sheet 1

