

REPORT OF COMPLETED WORKS - SEACOAST FORTIFICATIONS.
(Searchlights)

COAST DEFENSES OF SAN DIEGO, CALIF.
FORT ROSECRANS.
SEARCHLIGHT NO. ~~ONE.~~ No. 11**

Form 4. Corrected to JUN 14 1921

Size 60-INCH Portable or fixed FIXED**

<p>PROJECTOR</p> <p>Location..... N.67°25' W.1300 ft. from Gun 1, Pit A, Battery Whistler. Co-ord. 16657.4S - 20625.8W.</p> <p>Manufacturer..... General Electric Co.</p> <p>Type of projector..... E.C. Form N, 150 Amp. - N-10 *</p> <p>Serial No. of projector... 21740</p> <p>Type of lamp..... Automatic Type H, Form D.</p> <p>Serial No. of lamp..... Not received.</p> <p>Electric or hand control. Both.</p> <p>Material of mirror..... Glass.</p> <p>Date purchased..... Unknown.</p> <p>From whom purchased.... General Electric Co.</p> <p>Date received in district May 25, 1920.</p> <p>From whom received..... Gen. Elect. Co. (A.T. & S.F. Ry.)</p> <p>Age of mirror..... New.</p> <p>Condition of mirror..... Good.</p> <p>Date last repaired..... Not repaired.</p> <p>Switchboard serial No.... 200480.</p>		<p>INSTALLATION</p> <p>General character..... Projector on counter-balanced lift in buried shelter.</p> <p>Date structure transferred to troops..... JUN 14 1921</p> <p>Cost to that date.....</p> <p>Materials of construction. Concrete and steel.</p> <p>Interior dimensions, day shelter..... 13 ft. x 18 ft. x 14 ft. 4 in. height</p> <p>Height and type of tower.. No tower.</p> <p>Means by which projector is placed in operating position..... Counter-balanced elevating device.</p> <p>Reference axis of projector in operating position 221.6 ft. (M.L.L.W. datum)</p> <p>Kind of protection in operating position..... None.</p> <p>Concealment of day shelter from approach channel Buried.</p> <p>Dates & cost of extensive remodeling or reconstruction..... None.</p>	
<p>CABLES #</p> <p>Power plant to switchboard</p> <p>Length and size..... 15' 4/0 R.C. cable.</p> <p>In conduits or in air.. Conduit. 1 duct; no manholes</p> <p>Projector to switchboard</p> <p>Length and size..... 408' 212,000 GM Type R.L.A.S.</p> <p>In conduit or in air... Buried in earth.</p> <p>Controller to light.....</p> <p>Length and size..... 2113' type C.L.A.S., 11 Cond.</p> <p>In conduit or in air... Buried in earth.</p> <p>Aux. controller to light. None.</p> <p>Length and size.....</p> <p>In conduit or in air...</p>		<p>POWER PLANT</p> <p>Location..... Co-ord. 16988.1S, 20740.3W</p> <p>Maximum demand kw..... 20 KW.</p> <p>Type and size..... 25-kw. D.C. gasoline electric, Type M.P.C. 6-25-560, Form G.</p>	
		<p>CONTROLLERS</p> <p>Location..... In First Fire Command Sta.</p> <p>Type..... Form N-12.</p> <p>Serial No..... 400365</p> <p>How protected or concealed..... In concrete shelter with steel roof.</p>	

If in conduit state No. of ducts and manholes. If trenched, state whether cable has armor.

* See 470.31 A - 2302, 12/13/38
Form of Projector N-10

** Fixed Light to be replaced w/ portable.
See 470.3 (San Diego) CM 109917

B25 10/20/44

** 470.3 (San Diego) CM 53580

REPORT OF COMPLETED WORKS - SEACOAST FORTIFICATIONS.
(Electric Plants)

COAST DEFENSES OF SAN DIEGO, CALIF.
FORT ROSECRANS
POWER FOR SEARCHLIGHTS NOS. ~~1 & 2~~ ^{11 & 12} *

Form 5.

Corrected to NOV 9 1920

	Serial No.	Type	Size	Mfr.	Date of transfer	Cost	Con- dition	RPM	Belt or Direct Drive	Radiator for Engine No.	Fuel	Switchboard						
												Material	No. of panels					
Boiler No.1					Nov. 9, 1920	\$5,130.87												
No.2																		
No.3																		
Engine No.1	17758	GM 12	43/54 HP	Gen.Elect.			New	560	Direct		Gas.		115 ac 2	-	No			
No.2	17755	GM 12	43/54 HP	" "			"	560	"		"		115 DC 2	-	No			
No.3																		
Generator																		
No.1	924268	M.P.C. 6	25 KW	Gen.Elect.			"	560	"									
No.2	924265	M.P.C. 6	25 KW	" "			"	560	"									
No.3																		
Radiator																		
No.1	17265	FF 54		" "			"			17 758								
No.2	17262	FF 54		" "			"			17 755								
No.3																		
Fan Motor																		
No.1	956002	R.C.	3 HP	" "			"	1150	"									
No.2	956069	R.C.	3 HP	" "			"	1150	"									
No.3																		
Switchboard(1)	201200	CDG		" "			"											
(2)	200480	CDG		" "			"											
Storage Battery	None																	
Transformer	None																	
No.1																		
No.2																		
No.3																		
Auxiliaries	None																	
No.1																		
No.2																		
No.3																		

DISTRIBUTION OF KW. - Lights Wilkeson and Calof 5.68 kw.; Lights Leath, .84 kw.; Lights T. Brown, .55 kw.;
for EACH of four (4) hoist motors 7.70 kw.

* Fixed p.p.s to be removed and replaced with portable p.p.s
See 470.3 (San Diego) CM 109917 BNS 10/20/20

Transfer Dwg. - O.C.E. 102-40-36

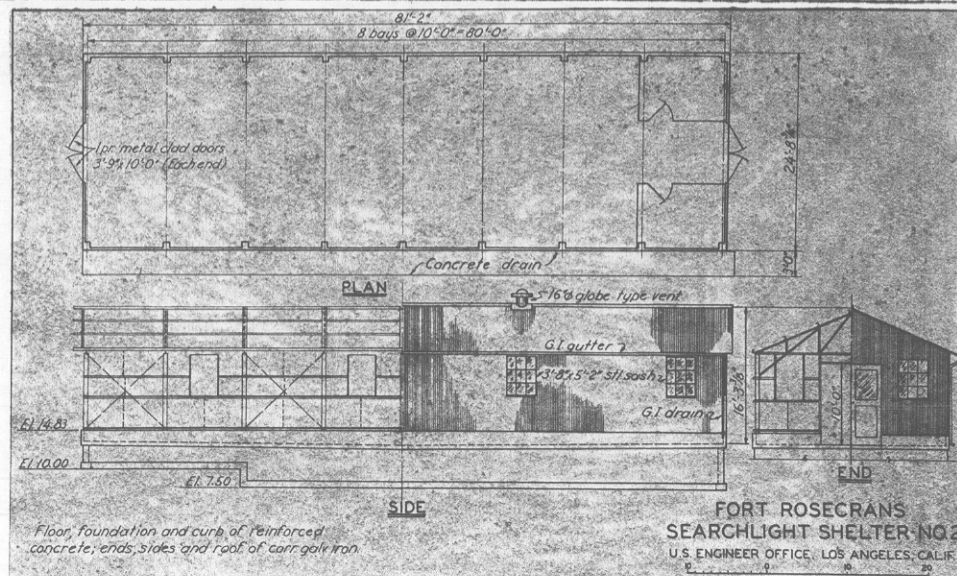
REPORT OF COMPLETED WORKS - SEACOAST FORTIFICATIONS
(Fire control or Torpedo Structures)

HARBOR DEFENSES OF SAN DIEGO, CALIF.
FORT ROSECRANS
STRUCTURE SHELTER No. 2
FOR PORTABLE AA SEARCHLIGHTS

Form 2.

Corrected to December 31, 1940.

STRUCTURE:	:	:	:
Location	: Approx. 200 ft. N.W.	: INSTRUMENTS AND EQUIPMENT:	:
	: Gun No. 1, Bty.	: Type of observing inst.	: None.
	: Fetterman.	: Type of plotting board	: None.
Date of transfer	: November 18, 1940	:	:
Cost to that date	: \$7516.61	: DATA TRANSMISSION:	:
Type of construction	:	: Type of	: None.
(a) Roof	: Corr. Galv. Sheets - Steel:	:	:
(b) Remainder of bldg.	: " " " Frame :	: Note: Single circuit	:
How concealed	: Not concealed.	: 7 reflector lights	:
	:	: 2 double convenience outlets	:
How protected	: Not protected.	: Remarks: Transfer of structure to	:
	:	: Q.M.Gen. for maintenance approved	:
Height above concealment	: 16'-3 3/8"	: by Adj.Gen., 1st Ind., 9-11-40, to	:
Height above protection	: 16'-3 3/8"	: letter from C. of E. to Adj.Gen.,	:
Conspicuous at - yards	:	: "Transfer of Searchlight Shelters,"	:
ELECTRIC CURRENT:	:	: dated 8-19-40. Historical records	:
Source of	: Commercial.	: submitted to Q.M., Ft. Rosecrans,	:
Kilowatts required	: Approx. 2 kw. (See note.)	: California, 11-30-40.	:
Type of lighting fixtures	: Direct industrial		
HEAT:	: reflectors.		
How heated	: Not heated.		
WATER & SEWER:	:		
Connected to water mains	: Yes.		
Connected to sewer	: No.		
Type of latrine	: None.		
Permanent or temporary inst'l.	: Permanent.		
Present condition	: Excellent.		
REFERENCE:	:		
Reference of site	: Floor El. 13.5		
Reference of instrument axis	: -		
Type and capacity of crane	: None.		
Max. dim. of reel handled.	: -		



REPORT OF COMPLETED WORKS - SEACOAST FORTIFICATIONS.
(Searchlights)

COAST DEFENSES OF SAN DIEGO, CALIF.
FORT ROSECRANS.
SEARCHLIGHT NO. ~~TWO~~ No. 12 **

Form 4. Corrected to JUN 14 1921

Size 60-INCH Portable or fixed FIXED **

PROJECTOR	INSTALLATION
Location..... N.74°37' W.1700 ft.from Gun 1, Pit A,Battery Whistler. Co- ord. 16838.4S 20966.2 W. Manufacturer..... General Electric Company. Type of projector..... E.C.Form N. 150 Amp. - N-10 * Serial No.of projector... 21756. Type of lamp..... Automatic Type H, Form D. Serial No. of lamp..... Not received. Electric or hand control. Both. Material of mirror..... Glass. Date purchased..... Unknown. From whom purchased..... General Electric Co. Date received in district May 25, 1920. From whom received..... Gen.Elect.Co. (A.T.& S.F.Ry.) Age of mirror..... New. Condition of mirror..... Good. Date last repaired..... Not repaired. Switchboard serial No.... 201200	General character..... Projector on counter-balanced lift in buried shelter. Date structure transferred to troops..... JUN 14 1921 Cost to that date..... Materials of construction. Concrete and steel. Interior dimensions, day shelter..... 13 ft.x 18 ft.x 14 ft.4 in.height Height and type of tower.. No tower. Means by which projector is placed in operating position..... Counter-balanced elevating device. Reference axis of project- or in operating position 115.9 (M.L.L.W. Datum) Kind of protection in operating position..... None. Concealment of day shelter from approach channel Buried. Dates & cost of extensive remodeling or reconstruc- tion..... None.
CABLES # Power plant to switchboard Length and size..... 15 ft. 4/0 R.L. cable. In conduits or in air.. Conduit. 1 duct; no manholes Projector to switchboard Length and size..... 570' 212,000 CM.Type R.L.A.S. In conduit or in air... Buried in earth. Controller to light..... Length and size..... 1890 ft.Type C.L.A.S.11 condr. In conduit or in air... Buried in earth. Aux. controller to light. Length and size..... None. In conduit or in air...	POWER PLANT Location..... Co-ord.16988.1S, 20740.3W Maximum demand kw..... 20-kw. Type and size..... 25-kw.D.C.gasoline electric Type M.P.C. 6-25-560, Form G.
	CONTROLLERS Location..... In First Fire Command Station. Type..... Form N 12. Serial No..... 400371. How protected or con- cealed..... In concrete shelter with steel roof.

If in conduit state No. of ducts and manholes. If trenched, state whether cable has armor.

* Sec 470.31 A - 2302, 12/13/38:

Form of projector N-10

** 470.2 (San Diego) CM 52500

** Fixed S/L to be replaced w/ portable S/L

Sec 470.3 (San Diego) CM 109917

BM 10/20/40

600.914 (San Diego) 87112

~~CONFIDENTIAL~~REPORT OF COMPLETED WORKS - SEACOAST FORTIFICATIONS
(Searchlights)HARBOR DEFENSES OF SAN DIEGO
FORT ROSECRANS
STRUCTURE SHELTER (MOBILE S.C.S.L. NO. 13)

Part IV (Modified) Corrected to 24 March 1944

STRUCTURE: S 23,140
 Location (by coordinates) W 19,050
 Location: West Fort Rosecrans, Site No. 6
 Date of transfer: 2 July 1943
 Cost to that date: \$1,040.00

87112

Type of construction
 (a) Roof: 12 gage multiplate metal arch
 (b) Remainder of bldg.: Reinforced concrete
 How concealed: Dug-in & native growth
 How protected: Earth cover
 Height above concealment: 10 ft. (at entrance)
 Height above protection: 10 ft. " "
 Conspicuous at 100 yards

REMARKS:

Formerly # 9

" Shelter for mobile seacoast searchlight No. 13; formerly
 No. 9.

" Origin of U.S.E.D. Local Coordinates is U.S.C. & G.S.
 Station "Old Town."

" Elevations are in feet above Mean Lower Low Water.

" See Construction details on reverse.

UTILITIES:

Electric power: None
 Source of: No

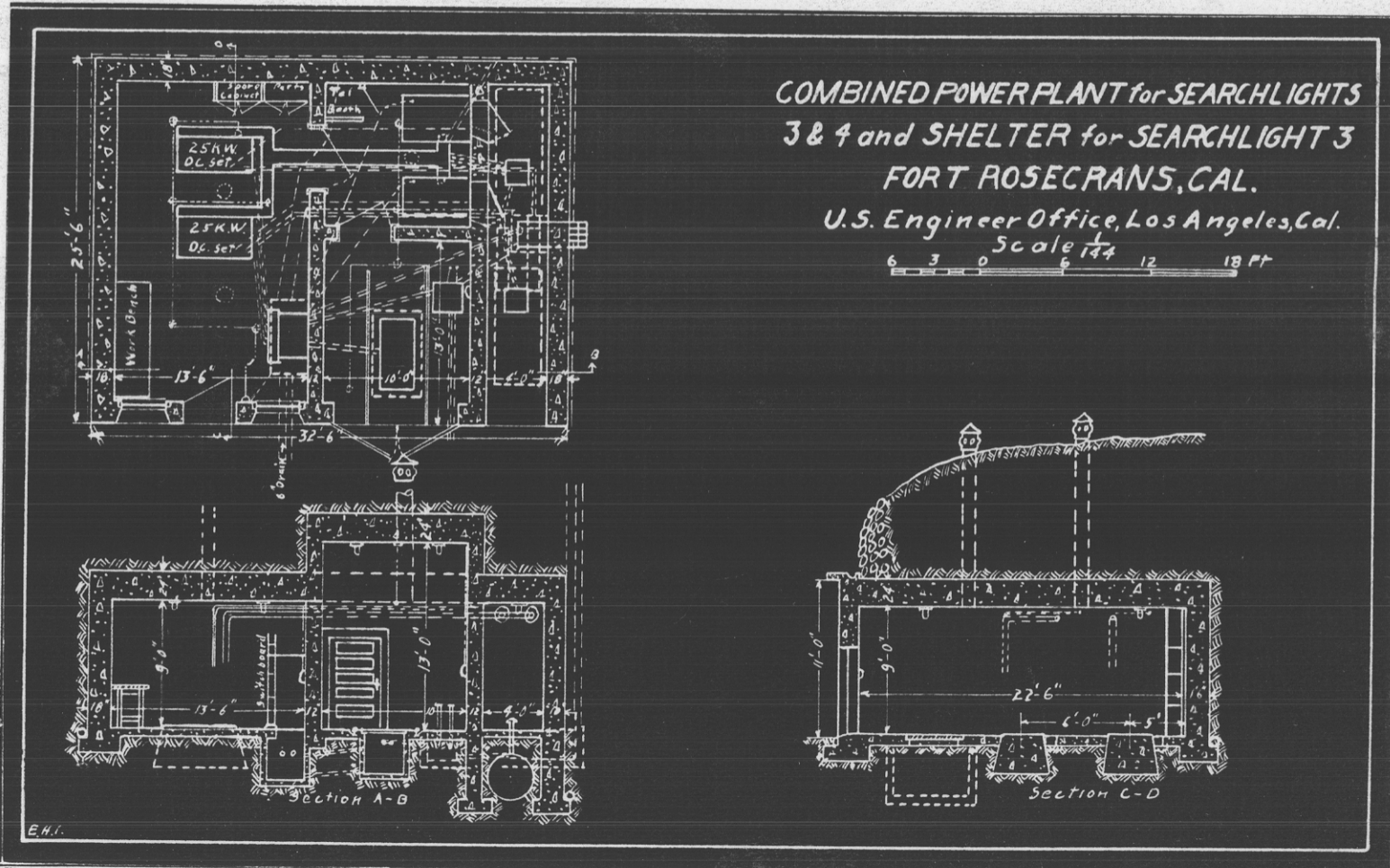
Kilowatts required: None
 Type of lighting fixtures: None

Heat
 Is heated: Not heated

Water sewer
 Connected to water mains: No
 Connected to sewer: No
 Type latrines: None

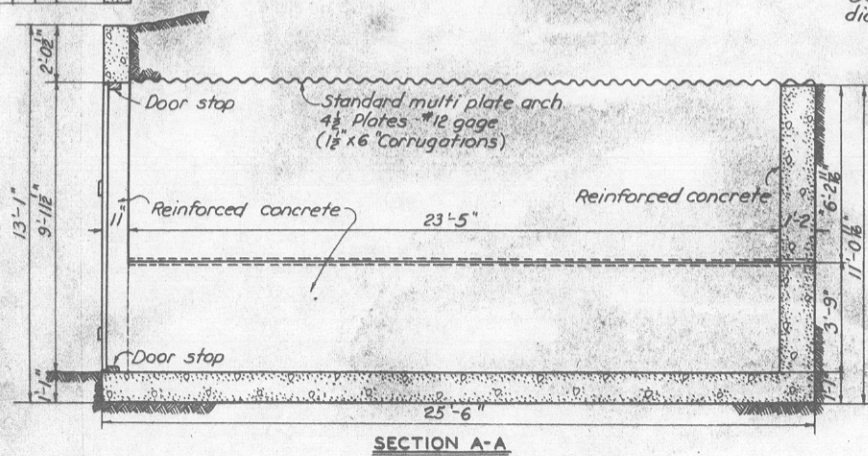
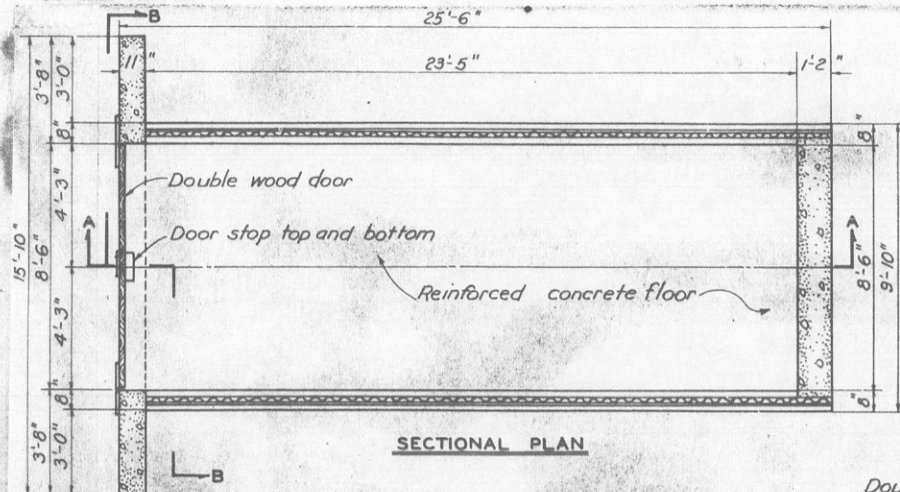
REFERENCE:

Reference of site: Elevation 180'

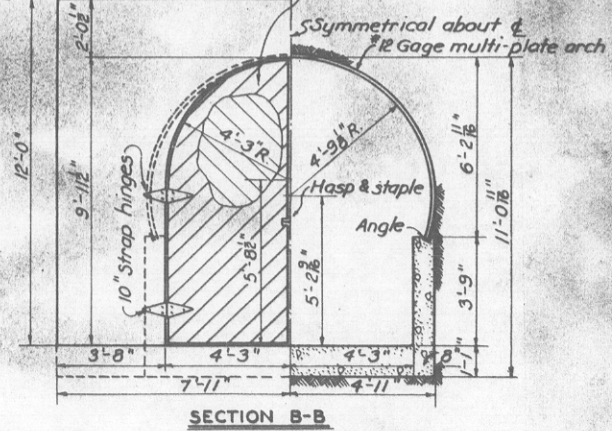


OFFICE OF THE ENGINEER
 U.S. ARMY CORPS OF ENGINEERS
 WASHINGTON, D.C.
 APR 29 2 11 PM '13
 SAN DIEGO, CALIFORNIA

HARBOR DEFENSES OF SAN DIEGO, CALIF
SEARCHLIGHT SHELTER NO. 13
 U. S. ENGINEER OFFICE, LOS ANGELES, CALIF
 NOT TO SCALE



Double door of 1x6" nailed together diagonally and cut to fit door opening



~~CONFIDENTIAL~~

SPEKM-1

600.914 (San Diego) 87112

REPORT OF COMPLETED WORKS - SEACOAST FORTIFICATIONS
(searchlight)

HARBOR DEFENSES OF SAN DIEGO
FORT ROSECRANS
STRUCTURE SHELTER (MOBILE S.C.S.L. No. 14)

Part IV (Modified) Corrected to 24 March 1944

Formerly #10

STRUCTURES:	S 23,180	"	"
Location (by coordinates)	W 19,400	"	REMARKS:
Location:	West Fort Rosecrans, Site No. 6	"	Shelter for mobile seacoast searchlight No. 14; formerly
Date of transfer:	2 July 1943	"	No. 10.
Cost to that date:	\$1,040.00	"	Origin of U.S.E.D. Local Coordinates is U.S.C. & G.S.
Type of construction		"	Station "Old Town."
(a) Roof:	12 gage multiplate metal arch	"	Elevations are in feet above Mean Lower Low Water.
(b) Remainder of bldg.:	Reinforced concrete	"	See Construction details on reverse.
How concealed:	Dug-in & native growth	"	
How protected:	Earth cover	"	
Height above concealment:	10 ft. (at entrance)	"	
Height above protection:	10 ft. " "	"	
Conspicuous at	100 yards	"	

87112

UTILITIES:

Electric power: None
Source of: No

Kilowatts required: None
Type of lighting fixtures: None
at

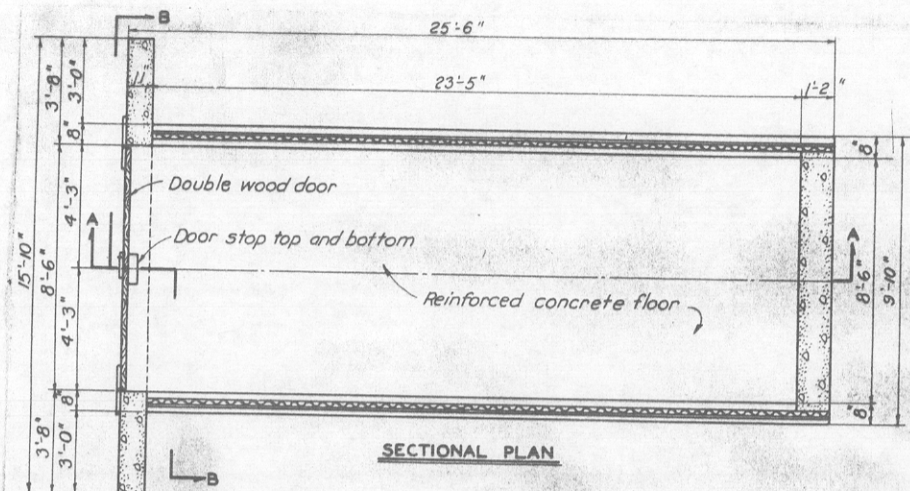
How heated: Not heated
Water sewer

Connected to water mains: No
Connected to sewer: No
Type latrine: None

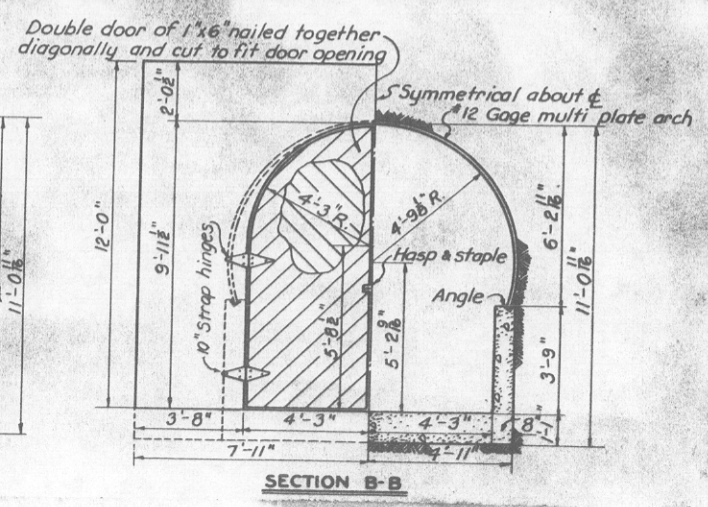
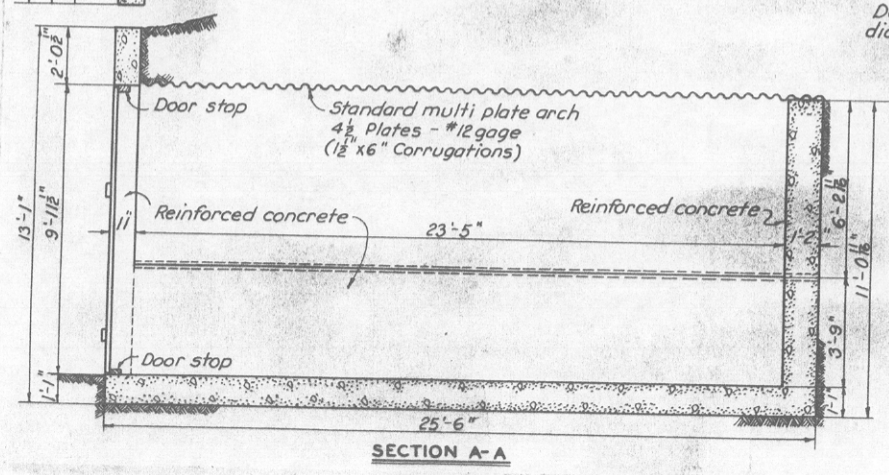
REFERENCE:
Reference of site: Elevation 85'

~~CONFIDENTIAL~~

SEARCHLIGHT SHELTER NO. 14
 U.S. ENGINEER OFFICE, LOS ANGELES, CALIF.
 NOT TO SCALE



HARBOR DEFENSES OF SAN DIEGO, CALIF.
SEARCHLIGHT SHELTER NO. 14
 U.S. ENGINEER OFFICE, LOS ANGELES, CALIF.
 NOT TO SCALE



REPORT OF COMPLETED WORKS - SEACOAST FORTIFICATIONS.
(Searchlights)

COAST DEFENSES OF SAN DIEGO, CALIF.
FORT ROSECRANS.

SEARCHLIGHT NO. ~~THREE~~ No. 15**(?)

Form 4.

Corrected to NOV 9 1920

Size SIXTY-INCH Portable or fixed Portable on fixed track.

<u>PROJECTOR</u>		<u>INSTALLATION</u>	
<p>Location.....</p> <p>Manufacturer.....</p> <p>Type of projector.....</p> <p>Serial No. of projector...</p> <p>Type of lamp.....</p> <p>Serial No. of lamp.....</p> <p>Electric or hand control.</p> <p>Material of mirror.....</p> <p>Date purchased.....</p> <p>From whom purchased.....</p> <p>Date received in district</p> <p>From whom received.....</p> <p>Age of mirror.....</p> <p>Condition of mirror.....</p> <p>Date last repaired.....</p> <p>Switchboard serial No....</p>	<p>S. 0°58' W. 2262.1' from Old Spanish Lighthouse.</p> <p>General Electric Company.</p> <p>E.C. Form N. 150 amps. - N-10 *</p> <p>21747</p> <p>Automatic Type H, Form D. 395</p> <p>Both.</p> <p>Glass.</p> <p>No record</p> <p>General Electric Co.</p> <p>June 5, 1920.</p> <p>D. Q. M. Office, Wash., D. C.</p> <p>New.</p> <p>Good.</p> <p>Not repaired.</p> <p>200497.</p>	<p>General character.....</p> <p>Date structure transferred to troops.....</p> <p>Cost to that date.....</p> <p>Materials of construction.</p> <p>Interior dimensions, day shelter.....</p> <p>Height and type of tower.</p> <p>Means by which projector is placed in operating position.....</p> <p>Reference axis of projector or in operating position</p> <p>Kind of protection in operating position.....</p> <p>Concealment of day shelter from approach channel</p> <p>Dates & cost of extensive remodeling or reconstruction.....</p>	<p>Mounted on push car.</p> <p>NOV 9 1920</p> <p>see B. Report, P. Plant, SL's 3 & 4.</p> <p>Concrete and steel.</p> <p>10'0" x 13'0" x 13'0" height.</p> <p>No tower.</p> <p>Pushed on car to operating position.</p> <p>120.0 ft. (M.L.L.W. Datum)</p> <p>None.</p> <p>In canyon not visible from field of fire.</p> <p>None.</p>
<p><u>CABLES #</u></p> <p>Power plant to switchboard</p> <p>Length and size.....</p> <p>In conduits or in air..</p> <p>Projector to switchboard</p> <p>Length and size.....</p> <p>In conduit or in air...</p> <p>Controller to light.....</p> <p>Length and size.....</p> <p>In conduit or in air...</p> <p>Aux. controller to light..</p> <p>Length and size.....</p> <p>In conduit or in air...</p>	<p>25 ft. 4/0 R.L. cable.</p> <p>Conduit. 1 duct; no manholes</p> <p>146' 212,000 CM Type R.L.A.S.</p> <p>Buried in earth.</p> <p>981 ft. Type C.L.A.S. 11 cond. Buried in earth.</p> <p>None.</p>	<p><u>POWER PLANT</u></p> <p>Location.....</p> <p>Maximum demand kw.....</p> <p>Type and size.....</p>	<p>2114 ft. south of Old Sp. Lighthouse</p> <p>20-kw.</p> <p>25-kw. D.C. gasoline electric type M.P.C. 6-25-560, Form G.</p>
		<p><u>CONTROLLERS</u></p> <p>Location.....</p> <p>Type.....</p> <p>Serial No.....</p> <p>How protected or concealed.....</p>	<p>In Fort Command Station.</p> <p>Form N 12.</p> <p>400374.</p> <p>In concrete shelter with steel roof.</p>

If in conduit state No. of ducts and manholes. If trenched, state whether cable has armor.

* See 470.31 A - 2302, 12/13/38

Form of projector N-10

** 470.31 (San Diego) Form 52520

600.914 (San Diego) 84286

~~CONFIDENTIAL~~

SPECM-1

84286

REPORT OF COMPLETED WORKS - SEACOAST FORTIFICATIONS
(Searchlights)

HARBOR DEFENSES OF SAN DIEGO
FORT OR LOCATION FORT ROSECRANS
SEARCHLIGHT NO. 15
SIZE 60 INCH

Portable or Fixed **FIXED***

Part IV Corrected to 6 March 1944

INSTALLATION: S 28,850 (U.S.C. & G.S. Sta.)
Location by coordinates: W 17,950 (Old Town = 0.0)
Location: Site No. 7, Fort Rosecrans
General Character: Projector on counter balanced lift
Date transferred to troops: 9 November 1943
Cost to that date: \$4,311.33
Shelter
Materials of construction: Reinforced concrete
Interior dimensions: 18' x 13' x 15' high
Height and type of tower: No tower
Means by which projector is placed in operating position: Hand-crank elevator
Reference axis of projector in operating position: 108.36 above M.L.L.W.
Kind of protection in operating position: None
Concealment of day shelter from approach channel: Underground and native growth
Dates and cost of extensive remodeling or reconstruction: New structure

" PROJECTOR:
" Manufacturer: General Electric Company
" Type of projector: Mark 5; Mod - 9 & 10
" Form of projector: E.C. Form N-10
" Serial No. of projector: 21764
" Type of lamp: Automatic - Type H
" Model of lamp: Sperry V, Model 10
" Serial No. of lamp: 396
" Electric or hand control: Both
" Date received in Harbor Defense: 5 June 1920
" From whom received: D.Q.M. Office, Washington, D. C.

" MIRROR:
" Type: Glass
" Date purchased: No record
" Present condition: Good
" Date last repaired: New (installed 27 January 1944)

" SWITCHBOARD:
" Serial No. 201202

POWER PLANT:
Location: 110 ft. S 60° E of Light Shelter
Maximum demand K.W. 16.2
Type and size: G.T. 1508; 16.2 K.W. Engine-Gen. Set
(For Details see Part V)

" CABLES:
" Power Plant to Searchlight
" Type: Lead covered (Armored)
" Length and size: 250 ft., 4/0
" In conduit or in air: Buried
" Controller to light
" Type: Tellerium
" Length and size: 1100 ft., No. 16
" In conduit or in air: Conduit
" Auxiliary Controller to light
" Length and size: None
" In conduit or in air: None

CONTROLLERS:
Location: BC₃ B₂¹ S₃¹ (S 28,220; W 17,178.)
Type: D.L. 191641 (General Electric)
Form: N-12
Serial No. 400561
How protected or concealed: Dug-out type, reinforced concrete fire control station, earth covered & native growth.

" REMARKS: Elevator mechanism & projector salvaged from existing searchlight, originally No. 4, (1921) & No. 10 in Annex "C", CCA-AN-SD(1936), (location abandoned.)

~~CONFIDENTIAL~~

* To be replaced by portable 516
See 470 24 (500)

84286

REPORT OF COMPLETED WORKS - SEACOAST FORTIFICATIONS.
(Electric Plants)

COAST DEFENSES OF SAN DIEGO, CALIF.
FORT ROSECRANS. 15
POWER FOR SEARCHLIGHTS NOS. 8 & X

Form 5.

Corrected to NOV 9 1920

	Serial No.	Type	Size	Mfr.	Date of transfer	Cost	Con- dition	RPM	Belt or Direct Drive	Radiator for Engine No.	Fuel	Switchboard	
												Mate- rial	No. of panels
Boiler No.1					Nov. 9, 1920	\$8,482.71							
No.2													
No.3													
Engine No.1	17762	GM 12	43/54 HP	Gen.Elec.			New	560	Direct		Gas.	115 DC 2	No
No.2	17763	GM 12	43/54 HP	" "			"	560	"		"	115 DC 2	No
No.3													
Generator													
No.1	924272	MPC 6	25 KW	" "			"	560	"				
No.2	924273	MPC 6	25 KW	" "			"	560	"				
No.3													
Radiator													
No.1	17269	FF 54		" "			"			17762			
No.2	17270	FF 54		" "			"			17763			
No.3													
Fan Motor													
No.1	955937	RC 27A	3 HP	" "			"	1150	"				
No.2	955936	RC 27A	3 HP	" "			"	1150	"				
No.3													
Switchboard (1)	201202	CDG		" "			"					Slate	one
(2)	200497	CDG		" "			"					"	"
Storage Battery	None												
Transformer	None												
No.1													
No.2													
No.3													
Auxiliaries	None												
No.1													
No.2													
No.3													

Obsolete

* Fixed powerplant to be replaced with portable

DISTRIBUTION OF KW.

See C.M. 109917 470.3 (San Diego) ~~and obsolete~~

Transfer Dwg. - O.C.E. 102-40-37

~~CONFIDENTIAL~~

SPEK 1

REPORT OF COMPLETED WORKS - SEACOAST FORTIFICATION
(Electric Plants)

HARBOR DEFENSES OF SAN DIEGO
FORT ROSECRANS
POWER FOR FIXED S.C. SEARCHLIGHT NO. 15
PROCURED & INSTALLED BY: ENGINEERS

84286

Part V Corrected to 6 March 1944

	Serial No.	Type	Size	Mfr.	Date of Transfer	Cost	Condition	RPM	Type of Drive	Radiator for Engine No.	Fuel	Material	Switchboard No. of Panels
**Engine No. 1	956097	JxD	6 Cyl. 4" bore 4 1/2" stroke	Hercules	7 Dec 43	*	Good	--	--		Gas		
*Generator No. 1	1790708	G.T. 1508 (Model No. 5GT150B)	16.2 KW	Gen. Elect.	"	*	"	1100	Direct		--	Contained in Unit	
Radiator No. 1	697158	--	--	Perfex	"	--	"	--	--	1	--	--	--
Motor Generator	None												
Switchboard	Contained in unit												
Storage Battery	--	--	17 Pl.	Exide	"	--	"						
Transformer	None												
Auxiliaries	None												

REMARKS:

- * Cost not available (Furnished by Utah General Depot on O.C.E. requisition 11,899).
 - ** Engine-Generator Set: Mobile unit mounted on concrete blocks. General Serial No. 14,575; Designed for: 100v; 160 amp; Sperry V, Model 10 Searchlight (C of E No. 3561-P.O. No. 50885).
- Cost of shelter construction: \$1,804.00.

~~CONFIDENTIAL~~

REPORT OF COMPLETED WORKS - SEACOAST FORTIFICATIONS.
(Searchlights)

COAST DEFENSES OF SAN DIEGO, CALIF.
FORT ROSECRANS.

SEARCHLIGHT NO. ~~FOUR~~ No. 17 **

(2) 2

Form 4. Corrected to JUN 14 1921

Size SIXTY-INCH Portable or fixed FIXED Portables.

<u>PROJECTOR</u>		<u>INSTALLATION</u>	
<p>Location.....</p> <p>Manufacturer.....</p> <p>Type of projector.....</p> <p>Serial No. of projector...</p> <p>Type of lamp.....</p> <p>Serial No. of lamp.....</p> <p>Electric or hand control.</p> <p>Material of mirror.....</p> <p>Date purchased.....</p> <p>From whom purchased.....</p> <p>Date received in district</p> <p>From whom received.....</p> <p>Age of mirror.....</p> <p>Condition of mirror.....</p> <p>Date last repaired.....</p> <p>Switchboard serial No....</p>	<p>S. 12° 04' E. 1971.5 ft. from Old Spanish Lighthouse.</p> <p>General Electric Company. E.C. Form N. 150 amp. N-10 *</p> <p>21764.</p> <p>Automatic Type H, Form D.</p> <p>Not received.</p> <p>Both.</p> <p>Glass.</p> <p>Unknown.</p> <p>General Electric Company. June 5, 1920.</p> <p>General Elect. Co. (A.T. & S.F. Ry)</p> <p>New.</p> <p>Good.</p> <p>Not repaired.</p> <p>201202.</p>	<p>General character.....</p> <p>Date structure transferred to troops.....</p> <p>Cost to that date.....</p> <p>Materials of construction.</p> <p>Interior dimensions, day shelter.....</p> <p>Height and type of tower..</p> <p>Means by which projector is placed in operating position.....</p> <p>Reference axis of project- or in operating position..</p> <p>Kind of protection in operating position.....</p> <p>Concealment of day shelter from approach channel</p> <p>Dates & cost of extensive remodeling or reconstruc- tion.....</p>	<p>Projector on counter-balanced lift in buried shelter.</p> <p>JUN 14 1921</p> <p>Concrete and steel. 13' x 18' x 14'6" height.</p> <p>No tower.</p> <p>Counter-balanced elevating device</p> <p>309.9 ft. (M.L.L.W. Datum)</p> <p>None.</p> <p>Buried.</p> <p>None.</p>
<p><u>CABLES #</u></p> <p>Power plant to switchboard</p> <p>Length and size.....</p> <p>In conduits or in air..</p> <p>Projector to switchboard.</p> <p>Length and size.....</p> <p>In conduit or in air...</p> <p>Controller to light.....</p> <p>Length and size.....</p> <p>In conduit or in air...</p> <p>Aux. controller to light.</p> <p>Length and size.....</p> <p>In conduit or in air...</p>	<p>20 ft. 4/0 R.L. Cable.</p> <p>In conduits. 1 duct; no manholes</p> <p>540 ft. 212,000 CM Type R.L.A.S.</p> <p>Buried in earth.</p> <p>605 ft. type C.L.A.S. 11 cond.</p> <p>Buried in earth.</p> <p>None.</p>	<p><u>POWER PLANT</u></p> <p>Location.....</p> <p>Maximum demand kw.....</p> <p>Type and size.....</p> <p><u>CONTROLLERS</u></p> <p>Location.....</p> <p>Type.....</p> <p>Serial No.....</p> <p>How protected or con- cealed.....</p>	<p>2114' S. of old Spanish Lighthouse</p> <p>20-kw.</p> <p>25-hp. DC gasoline electric type MPC. 6-25-560, Form G.</p> <p>In Fort Commander's Station.</p> <p>Form N. 12.</p> <p>400367.</p> <p>In concrete shelter with steel roof.</p>

If in conduit state No. of ducts and manholes. If trenched, state whether cable has armor.

* See 470.31A - 2302, 12/13/38:

Form of projector N-10

** 440 2/10 7/12/20 1/11 52580

REPORT OF COMPLETED WORKS - SEACOAST FORTIFICATIONS.
(Searchlights)

COAST DEFENSES OF SAN DIEGO, CALIF.
FORT ROSECRANS.

SEARCHLIGHT NO. ~~FIVE~~ No. 18**

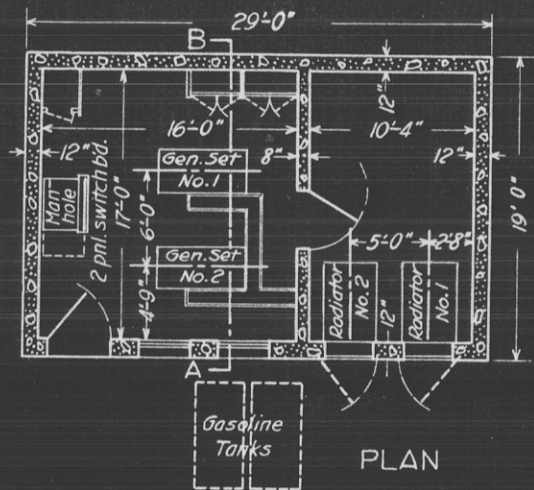
Form 4.

Corrected to JUN 14 1921

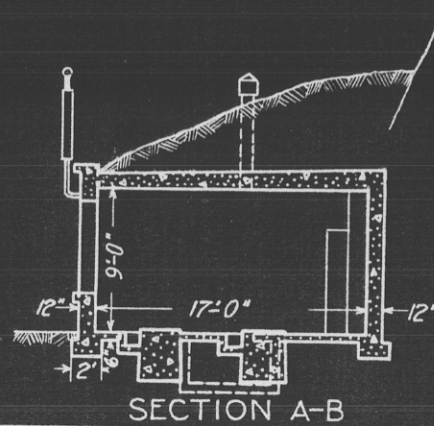
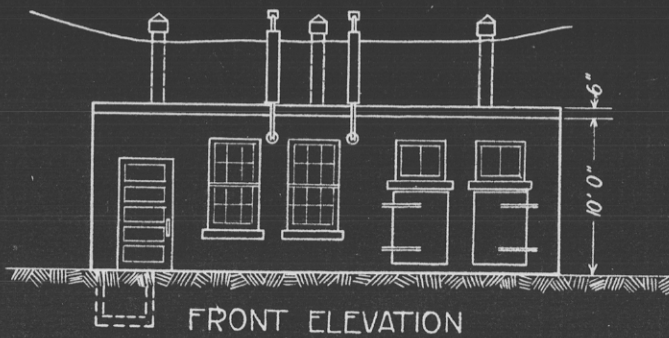
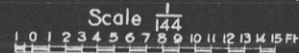
Size SIXTY-INCH Portable or fixed PORTABLE ON FIXED TRACK.

<p><u>PROJECTOR</u> Location..... S.56°16' E.976 ft.from Old Spanish Lighthouse. Manufacturer..... General Electric Company. Type of projector..... Type E.C.Form N, 150 amp. Serial No.of projector... 7791. Type of lamp..... Automatic Type H, Form D. * Serial No.of lamp..... 144, Model 4. Electric or hand control. Both. Material of mirror..... Glass. Date purchased..... Unknown. From whom purchased..... Unknown. Date received in district March 15, 1909. From whom received..... Fort Monroe, Va. Age of mirror..... 10 years. Condition of mirror..... Good. Date last repaired..... Unknown. Converted to Sperry in 1909. Switchboard serial No.... 201703.</p>		<p><u>INSTALLATION</u> General character..... Mounted on push car. Date structure transferred to troops..... JUN 1, 1921 Cost to that date..... Materials of construction Concrete and steel. Interior dimensions, day shelter..... 12' x 16' x 13' height. Height and type of tower.. No tower. Means by which projector is placed in operating position..... Pushed on car to operating position. Reference axis of projector in operating position. 214.6 ft. (M.L.L.W.Datum) Kind of protection in operating position..... None. Concealment of day shelter from approach channel.... Set in side of hill, not visible from field of fire. Dates & cost of extensive remodeling or reconstruction..... None.</p>	
<p><u>CABLES #</u> Power plant to switchboard Length and size..... 25' 4/0 R.L. cable. In conduits or in air.. Conduit. 1 duct, no manholes Projector to switchboard. Length and size..... 340 ft.212,000 CM Type R.L.A.S. In conduit or in air... Buried in earth. Controller to light..... Length and size..... 2266 ft.type C.L.A.S. 11 cond In conduit or in air... Buried in earth. Aux. controller to light. Length and size..... None. In conduit or in air...</p>		<p><u>POWER PLANT</u> Location..... S.55°15' E.840 ft.from Old Spanish Lighthouse. Maximum demand kw..... 20-kw. Type and size..... Type M.P.C.6-25-560 Form A, 25-kw.DC, gasoline electric.</p>	
		<p><u>CONTROLLERS</u> Location..... In Second Fire Command Station. Type..... G.E.Form N. Serial No..... 5881. How protected or concealed..... In concrete shelter.</p>	

If in conduit state No. of ducts and manholes. If trenched, state whether cable has armor.



POWER HOUSE
 FOR SEARCHLIGHTS NOS. 5 AND 6
 FORT ROSECRANS, CAL.
 U.S. ENGINEER OFFICE, LOS ANGELES, CAL.



REPORT OF COMPLETED WORKS - SEACOAST FORTIFICATIONS
(Searchlights)

COAST DEFENSES OF SAN DIEGO, CALIF.
FORT ROSECRANS.

SEARCHLIGHT NO. ~~SIX.~~ No. 19**

Form 4.

Corrected to JUN 14 1921

Size SIXTY-INCH Portable or fixed ~~FIXED~~*

<u>PROJECTOR</u>		<u>INSTALLATION</u>	
Location.....	N.70°37' E.945 ft. from Old Spanish Lighthouse.	General character.....	Projector on counter-balanced lift in buried shelter.
Manufacturer.....	General Electric Company.	Date structure transferred to troops.....	JUN 14 1921
Type of projector.....	Type E.C. Form N, 150 amp.	Cost to that date.....	Concrete and steel.
Serial No. of projector...	7792.	Materials of construction..	13' x 18' x 14' 4" height.
Type of lamp.....	Automatic, Type H, Form D. *	Interior dimensions, day shelter.....	No tower.
Serial No. of lamp.....	139.	Height and type of tower..	Counter-balanced elevating device.
Electric or hand control.	Both.	Means by which projector is placed in operating position.....	223.7 ft. (M.L.L.W. Datum)
Material of mirror.....	Glass.	Reference axis of project- or in operating position.	None.
Date purchased.....	Unknown.	Kind of protection in operating position.....	Buried.
From whom purchased.....	Unknown.	Concealment of day shelter from approach channel....	None.
Date received in district	Unknown.	Dates & cost of extensive remodeling or reconstruc- tion.....	
From whom received.....	Unknown.		
Age of mirror.....	Unknown.		
Condition of mirror.....	Badly spotted, needs resilvering.		
Date last repaired.....	Converted from G.E. Burner to Sperry in 1917.		
Switchboard serial No....	200503.		
<u>CABLES #</u>		<u>POWER PLANT</u>	
Power plant to switchboard		Location.....	S.55°15' E.840 ft. from Old Spanish Lighthouse.
Length and size.....	20 ft. 4/0 R.L. cable.	Maximum demand kw.....	20-kw.
In conduits or in air..	Conduit. 1 duct, no manholes	Type and size.....	Type M.P.C.6-25-560 Form A, 25- kw. D.C. gasoline electric
Projector to switchboard.			
Length and size.....	410 ft. 212,000 CM Type R.L.A.S.		
In conduit or in air...	Buried in earth.		
Controller to light.....			
Length and size.....	2296 ft. Type C.L.A.S. 11 condr.		
In conduit or in air...	Buried in earth.		
Aux. controller to light.			
Length and size.....	None.		
In conduit or in air...			
		<u>CONTROLLERS</u>	
		Location.....	In Second Fire Command Station.
		Type.....	G.E. Form N.
		Serial No.....	5882.
		How protected or con- cealed.....	In concrete shelter.

If in conduit state No. of ducts and manholes. If trenched, state whether cable has armor.

* See 470.31 A - 2302, 12/13/39

Type of lamp - converted Sperry

** 470.3 (San Diego) CM 53580

* Take replacement with portable S/L. See 470.38 (San Diego) CM 109917

REPORT OF COMPLETED WORKS - SEACOAST FORTIFICATIONS.
(Electric Plants)

COAST DEFENSES OF SAN DIEGO, CALIF.
FORT ROSECRANS.
* POWER FOR SEARCHLIGHTS NOS. ~~4~~ & ~~4~~ ^{19*}

Form 5.

Corrected to NOV 9 1920

	Serial No.	Type	Size	Mfr.	Date of transfer	Cost	Con- dition	RPM	Belt or Direct Drive	Radiator for Engine No.	Fuel	Switchboard		
												Material	No. of panels	
Boiler No.1					Nov. 9, 1920	\$5,078.98								
No.2														
No.3														
Engine No.1	5361	GM 12	43/54 HP	Gen.Elec.			Good	560	Direct		Gas.		See 475.1 (9th CA) 1	
No.2	5362	GM 12	43/54 HP	" "			"	560	"		"		Volts	Used For
No.3													Cycle	Wire
Generator														Ort Power
No.1	183143	MPC 6	25 KW	" "			"	560	"				115 DC	- 2
No.2	183127	MPC 6	25 KW	" "			"	560	"				115 DC	- 2
No.3														
Radiator														
No.1	No. no.			" "			"			5361				
No.2	" "			" "			"			5362				
No.3														
Fan Motor														
No.1	177843	CO 3	3 HP	" "			"	1050	"					
No.2	177803	CO 3	3 HP	" "			"	1050	"					
No.3														
Switchboard (1)	201703	CDG		" "			New						slate	One
(2)	200503	CDG		" "			"						"	"
Storage Battery	None													
Transformer	None													
No.1														
No.2														
No.3														
Auxiliaries	None													
No.1														
No.2														
No.3														

DISTRIBUTION OF KW.

* To be replaced w/ portable power plant
See 470.38 (San Diego) CM 109917 10/20/44

REPORT OF COMPLETED WORKS - SEACOAST FORTIFICATIONS
(Searchlights)

COAST DEFENSES OF SAN DIEGO, CALIF.

~~FORT PIC PICO~~ North Island. **
SEARCHLIGHT NO. ~~SEVEN~~ No. 21 **

Form 4. Corrected to JUN 14 1921

Size Sixty In. Portable or fixed. FIXED. **

<p>PROJECTOR Location..... 195 ft. S. from power plant for searchlights Nos. 7 & 8 Co-ord. 22132.5 S 4587.7 W Manufacturer..... General Electric Co. Type of projector..... E.C. Form N 150 Amp. - N-10 * Serial No. of projector.. 21759 Type of lamp..... Automatic Type H Form D Serial No. of lamp Not received Electric or hand control. Both Material of mirror..... Glass Date purchased Unknown From whom purchased General Electric Co. Date received in district May 24, 1920 From whom received..... General Elec. Co. (S.D. & A. Ry) Age of mirror..... New Condition of mirror..... Good Date last repaired Not repaired Switchboard serial No.... 201201</p>		<p>INSTALLATION General character lift in buried shelter. Date structure transferred to troops Projector on counter-balanced/ Cost to that date JUN 14 1921 Materials of construction . Concrete and steel. Interior dimensions, day shelter 13' x 18' x 21' 1/2" Height Height and type of tower... No tower Means by which projector is placed in operating position..... Counter-balanced elevating device. Reference axis of projector in operating position 43.6 ft. (M.L.L.W. Datum) Kind of protection in operating position None. Concealment of day shelter from approach channel Shelter with exception of roof is covered with earth Dates & cost of extensive remodeling or reconstruction None</p>	
<p>CABLES # Power plant to switchboard Length and size 15 ft. 4/0 L. C. Cable In conduits or in air .. conduit - 1 duct, no manholes Projector to switchboard. Length and size 212000 C.M. Type RLAS 470 ft. In conduit or in air ... Buried in earth Controller to light..... Length and size 1054 ft. Type CLAS 11 cond. In conduit or in air ... Buried in earth Aux. controller to light. Length and size None In conduit or in air ...</p>		<p>POWER PLANT Location Co-ord. 22011.5 S 4229.9 W Maximum demand kw..... 20-kw. Type and size 25-kw. Gasoline Electric Type MPC 6-25-560, Form G</p>	
		<p>CONTROLLERS Location Co-ord. 22002.4 S 5518.0 W Type N-12 Serial No. 400367 How protected or concealed In concrete shelter with steel roof</p>	

If in conduit state No. of ducts and manholes. If trenched, state whether cable has armor.

* See 470.31 A - 2302, 12/13/38
Form of projector N-10

** Fixed Light to be replaced w/ portable s/l + moved to new position near ANTB Btry #8, Coronado Beach. Old s/l structure to be abandoned. See 470.3 (San Diego) CM 109917 B75 10/20/44

** 470.3 (San Diego) CM 53580

REPORT OF COMPLETED WORKS - SEACOAST FORTIFICATIONS.
(Fire Control or Torpedo Structures)

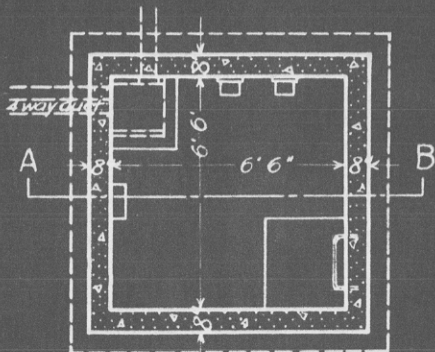
COAST DEFENSES OF SAN DIEGO, CAL.
FORT ROSECRANS

STRUCTURE CONTROLLER STA., SEARCHLIGHT NO. ~~7~~ 21*

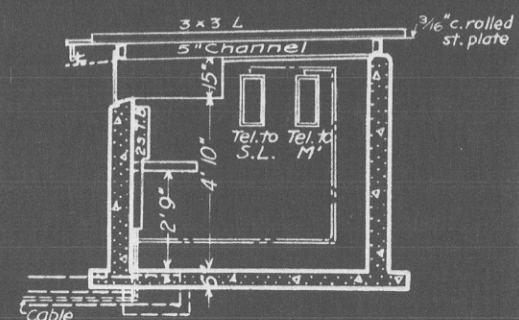
Form 2.

Corrected to JUN 11 1921

Location	N. 82° W. 300' from B#4 Coord. 22002.2 S, 5518.0 W. JUN 11 1921	Type of data transmission	Telephone.
Date of transfer		Date of transfer	
Cost to that date		Cost of data transmission	
Type of construction	Concrete and steel.	equipment	
(a) Roof	Steel	For tide stations give descrip-	
(b) Remainder of bldg.	Concrete reinforced.	tion of tide gauge	
H concealed	Partially concealed.	For datum points give Forts	
How protected	Partially protected.	from which visible	
Height above concealment	3 feet.	For dormitories give	
Height above protection	3 feet.	stations served	
Conspicuous at 7000 yards		For cable hut give	
Source of electric current	None.	S. C. type	
Kilowatts required	None.	<p>* Structure to be abandoned. SL #21 to be moved to new position near A14TB Btry #8, Coronado Bch. & controller to be installed in B3 Btry 134 See 470.3 (San Diego) CM 109917</p>	
Type of lighting fixtures	None.		
How heated	Not heated.		
Connected to water mains	Not connected.		
Connected to sewer	Not connected.		
Type of latrine	None.		
Permanent or temporary installation	Permanent.		
Present condition	Good.		
Reference of site	24.6		
Reference of instrumental axis	None.		
Type of observing inst.	None.		
Type of plotting board	None.		
Type and capacity of crane	None		
Max. dimensions of reel handled	None.		



PLAN



SECTION A-B

470.3 (San Diego) CM 53580

REPORT OF COMPLETED WORKS - SEACOAST FORTIFICATIONS
(Electric Plants)

COAST DEFENSES OF SAN DIEGO, CALIF.
FORT ROSECRANS
* POWER FOR SEARCHLIGHTS NOS. ^{21 22} A & B

Form 5.

Corrected to NOV 9 1920

	Serial No.	Type	Size	Mfgr.	Date of transfer	Cost	Con- dition	RPM	Belt or Direct Drive	Radiator for Engine No.	Fuel	Switchboard Mate-No. of rial Panels
Boiler No.1					Nov. 9, 1920	\$4,857.62						
No.2												
No.3												
Engine No.1	17503	GM 12	43/54HP	Gen.Elec.			New	560	Direct			
No.2	17592	GM 12	43/54HP	" "			"	560	"			
No.3												
Generator												
No.1	923985	MPC 6	25 KW	" "			"	560	"			
No.2	924102	MPC 6	25 KW	" "			"	560	"			
No.3												
Radiator												
No.1	17000	FF 54		" "			"	1150	"	17 503		
No.2	17078	FF 54		" "			"	1150	"	17 592		
No.3												
Motor-generator	None											
No.1												
No.2												
No.3												
Switchboard (1)	200481	CDG		" "			"					Slate-Open
(2)	201201	CDG		" "			"					" "
Transformer	None											
No.1	None											
No.2												
No.3												
Auxiliaries	None											
No.1												
No.2												
No.3												

* Note: Fixed plants to be replaced with portable plants.
Present power house to be abandoned and portable plant
to be installed in temporary shelters at new position near
AMTB Btry no 8 - Coronado Beach.
Sec 470.3 (San Diego) CMT 109917
BFW 10/20/44

DISTRIBUTION OF KW.

REPORT OF COMPLETED WORKS - SEACOAST FORTIFICATIONS
(Searchlights)

COAST DEFENSES OF SAN DIEGO, CALIF.

~~PORT PICO PICO~~ North Island.

SEARCHLIGHT NO. ~~EIGHT~~ No. 22 **

Form 4. Corrected to JUN 1 1921

Size Sixty In. Portable or fixed. ~~FIXED~~ **

<u>PROJECTOR</u>	Location..... 180 ft. S.E. from power plant for searchlights Nos. 7 & 8 Co-ord. 22160.9 S 4384.7 W Manufacturer..... General Electric Co. Type of projector..... EC Form N-10 *150 Amp. Serial No. of projector.. 21761 Type of lamp..... Automatic Type H Form D Serial No. of lamp..... Not received Electric or hand control. Both Material of mirror..... Glass Date purchased..... Unknown From whom purchased..... General Electric Co. Date received in district May 24, 1920 From whom received..... General Elec. Co. (S.D. & A. Ry). Age of mirror..... New Condition of mirror..... Good date last repaired..... Not repaired Switchboard serial No.... 200481	<u>INSTALLATION</u>	lift in buried shelter. Projector on counter-balanced/ JUN 14 1921 Concrete and steel 13' x 18' x 21' 1 1/2" Height No tower Counter-balanced elevating device... 43.2 ft. (M.L.L.W. Datum) None. Shelter with exception of roof is covered with earth None.
<u>Cables #</u>	Power plant to switchboard Length and size 15' 4/0 L.C. Cable In conduit or in air.... In conduit - 1 duct, no manholes Projector to switchboard. Length and size..... 250' 212000 CM Type RLAS In conduit or in air.... Buried in earth Controller to light..... Length and size..... 1161ft. Type CLAS 11 cond. r. In conduit or in air.... Buried in earth Aux. controller to light. Length and size..... None. In conduit or in air....	<u>POWER PLANT</u>	Location..... Co-ord. 22011.5 S 4229.9 W Maximum demand kw..... 20-kw. Type and size..... 25-kw. Gasoline Electric Type MPC 6-25-560 Form G
		<u>CONTROLLERS</u>	Location..... Co-ord. 22016.2 S 5419.0 W Type..... N-12 Serial No..... 400363 How protected or concealed In concrete shelter with steel roof

If in conduit state No. of ducts and manholes. If trenched, state whether cable has armor.

* See 470.31A-2302, 12/13/38
Form of projector N-10

** Fixed Lights to be replaced w/ Portable s/L + moved to new position near AMTB Btry #8, Coronado Bch. See 470.3 (San Diego) CM 109917 10/20/44

** 470.3 (San Diego) CM 53580

REPORT OF COMPLETED WORKS - SEACOAST FORTIFICATIONS.
(Fire Control or Torpedo Structures)

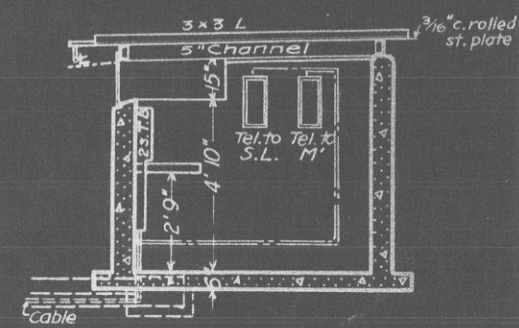
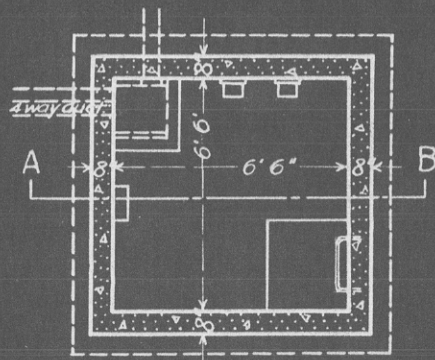
COAST DEFENSES OF SAN DIEGO, CAL.
FORT ROSECRANS.

* STRUCTURE CONTROLLER STA., SEARCHLIGHT NO. ~~8~~ 22*

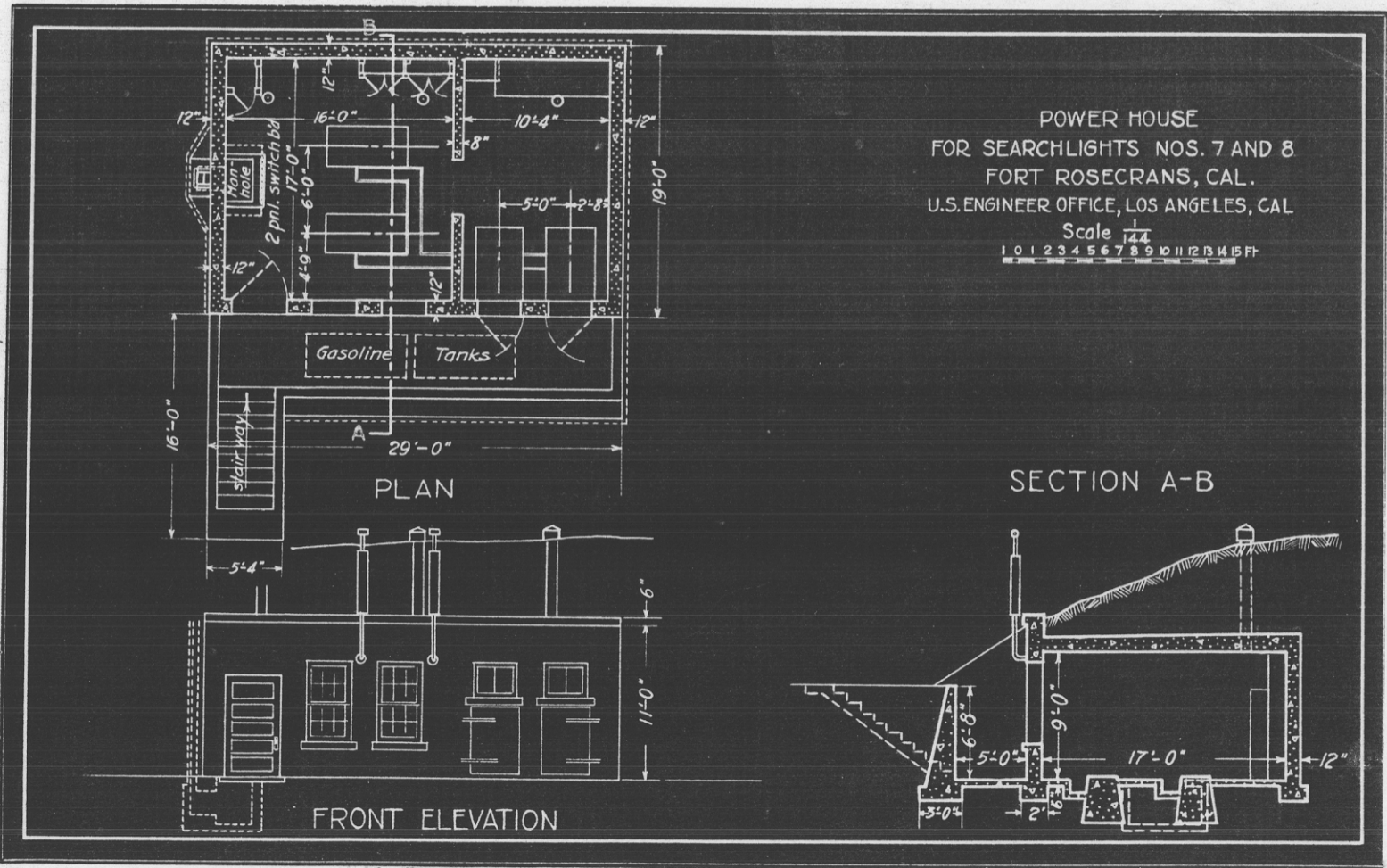
Form 2.

Corrected to JUN 14 1921

Location	N.82° W.200' from B ⁴ . Coord.22016.1 S,5419.0 W.	Type of data transmission	Telephone.
Date of transfer	JUN 11 1921	Date of transfer	
Cost to that date		Cost of data transmission	
Type of construction	Concrete and steel.	equipment	
(a) Roof	Steel.	For tide stations give descrip- tion of tide gauge	
(b) Remainder of bldg.	Concrete reinforced.	For datum points give forts from which visible	
How concealed	Partially concealed.	For dormitories give stations served	
How protected	Partially protected.	For cable hut give S. C. type	
Height above concealment	3 feet.	<p>* Structure to be abandoned. S/L 22 to be moved to new position & controller to be installed in B³ Btry Strong. See 470.3(S. Diego) CM 109917 10/20/44</p>	
Height above protection	3 feet.		
Conspicuous at 7000 yards			
Source of electric current	None.		
Kilowatts required	None.		
Type of lighting fixtures	None.		
How heated	Not heated.		
Connected to water mains	Not connected.		
Connected to sewer	Not connected.		
Type of latrine	None.		
Permanent or temporary installation	Permanent.		
Present condition	Good.		
Reference of site	24.6		
Reference of instrumental axis	None.		
Type of observing inst.	Not installed.		
Type of plotting board	None		
Type and capacity of crane	None		
Max. dimensions of reel handled	None.		



470.3(San Diego) CM 53580



POWER HOUSE
 FOR SEARCHLIGHTS NOS. 7 AND 8
 FORT ROSECRANS, CAL.
 U.S. ENGINEER OFFICE, LOS ANGELES, CAL.

Scale $\frac{1}{4}'' = 1'-0''$
 1 0 1 2 3 4 5 6 7 8 9 10 11 12 13 14 15 FT

REPORT OF COMPLETED WORKS - SEACOAST FORTIFICATIONS
(Electric Plants)

COAST DEFENSES OF SAN DIEGO, CALIF.
FORT ROSECRANS
POWER FOR SEARCHLIGHTS NOS. ^{21 22} 7 & 8

Form 5.

Corrected to NOV 9 1920

6

	Serial No.	Type	Size	Mfgr.	Date of transfer	Cost	Con- dition	RPM	Belt or Direct Drive	Radiator for Engine No.	Fuel	Switchboard Mate-No. of rial Panels
Boiler No.1					Nov. 9, 1920	\$4,857.62						
No.2												
No.3												
Engine No.1	17503	GM 12	43/54HP	Gen.Elec.			New	560	Direct			
No.2	17592	GM 12	43/54HP	" "			"	560	"			
No.3												
Generator												
No.1	923985	MPC 6	25 KW	" "			"	560	"			
No.2	924102	MPC 6	25 KW	" "			"	560	"			
No.3												
Radiator												
No.1	17000	FF 54		" "			"	1150	"	17 503		
No.2	17078	FF 54		" "			"	1150	"	17 592		
No.3												
Motor-generator	None											
No.1												
No.2												
No.3												
S chboard (1)	200481	CDG		" "			"					Slate-One
(2)	201201	CDG		" "			"					" "
Transformer	None											
No.1												
No.2												
No.3												
Auxiliaries	None											
No.1												
No.2												
No.3												

* Note: Fixed plants to be replaced with portable plants.
Present power house to be abandoned and portable plant
to be installed in temporary shelters at new position near
AMTB Btry No 8 - Coronado Beach
Sec 470.3 (San Diego) CMT 109917
BTS 10/20/44

DISTRIBUTION OF KW.

REPORT OF COMPLETED WORKS - SEACOAST FORTIFICATIONS.
(Fire Control or Torpedo Structures)

COAST DEFENSES OF SAN DIEGO, CAL.

FORT ROSECRANS

* STRUCTURE CONTROLLER STA., SEARCHLIGHT NO. ~~7~~ 21*

Form 2.

Corrected to JUN 14 1921

<p>Location Date of transfer Cost to that date Type of construction (a) Roof (b) Remainder of bldg. H concealed How protected Height above concealment Height above protection Conspicuous at 7000 yards Source of electric current Kilowatts required Type of lighting fixtures How heated Connected to water mains Connected to sewer Type of latrine Permanent or temporary installation Present condition</p>	<p>N. 82° W. 300' from B**4 Coord. 22002.2 S, 5518.0 W. JUN 14 1921 Concrete and steel. Steel Concrete reinforced. Partially concealed. Partially protected. 3 feet. 3 feet. None. None. None. Not heated. Not connected. Not connected. None. Permanent. Good.</p>	<p>Type of data transmission Date of transfer Cost of data transmission equipment For tide stations give description of tide gauge For datum points give Forts from which visible For dormitories give stations served For cable hut give S. C. type</p> <p><i>* Structure to be abandoned. S/L #21 to be moved to new position near ARTB Btry #8, Coronado Bch. & Controller to be installed in B³ Btry 134 See 470.3 (San Diego) CM 109917</i></p>	<p>Telephone.</p>
<p>Reference of site Reference of instrumental axis Type of observing inst. Type of plotting board Type and capacity of crane Max. dimensions of reel handled</p>	<p>24.6 None. None. None. None None.</p>	<p>PLAN</p> <p>SECTION A-B</p>	
<p>470.3 (San Diego) CM 53580</p>		<p>U. S. ENGINEER OFFICE, LOS ANGELES, CAL. Scale 1/4"</p>	

REPORT OF COMPLETED WORKS - SEACOAST FORTIFICATIONS.
(Fire Control or Torpedo Structures)

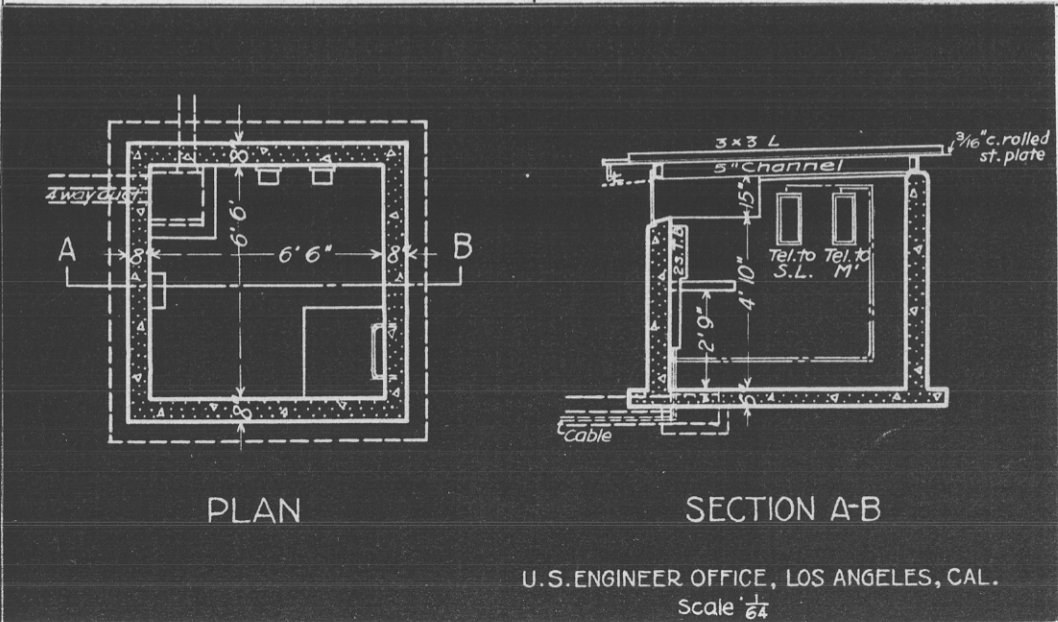
COAST DEFENSES OF SAN DIEGO, CAL.
FORT ROSECRANS.

* STRUCTURE CONTROLLER STA., SEARCHLIGHT NO. ~~8~~. 22*

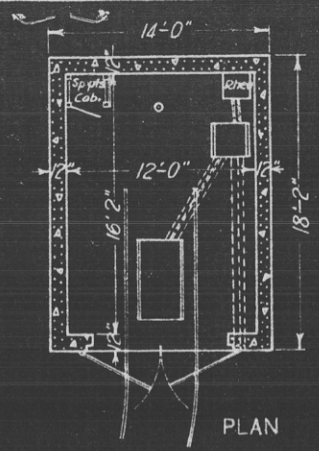
Form 2.

Corrected to JUN 14 1921

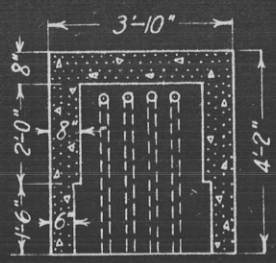
Location	N.82° W.200' from B ⁴ . Coord.22016.1 S,5419.0 W. JUN 14 1921	Type of data transmission	Telephone.
Date of transfer		Date of transfer	
Cost to that date		Cost of data transmission	
Type of construction	Concrete and steel.	equipment	
(a) Roof	Steel.	For tide stations give description of tide gauge	
(b) Remainder of bldg.	Concrete reinforced.	For datum points give forts from which visible	
How concealed	Partially concealed.	For dormitories give stations served	
How protected	Partially protected.	For cable hut give S. C. type	
Height above concealment	3 feet.	<p>* Structure to be abandoned. S/L 22 to be moved to new position & controller to be installed in B³ Btry Strong. See 470.3(S. Diego)CM 109917 10/20/44</p>	
Height above protection	3 feet.		
Conspicuous at 7000 yards			
Source of electric current	None.		
Kilowatts required	None.		
Type of lighting fixtures	None.		
How heated	Not heated.		
Connected to water mains	Not connected.		
Connected to sewer	Not connected.		
Type of latrine	None.		
Permanent or temporary	Permanent.		
CO. installation	Good.		
Present condition			
Reference of site	24.6		
Reference of instrumental axis	None.		
Type of observing inst.	Not installed.		
Type of plotting board	None		
Type and capacity of crane	None		
Max. dimensions of reel handled	None.		



470.3(San Diego)CM 53580

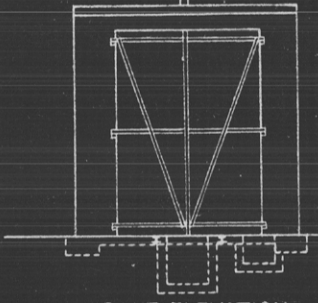
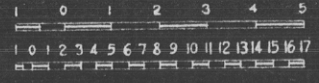


PLAN

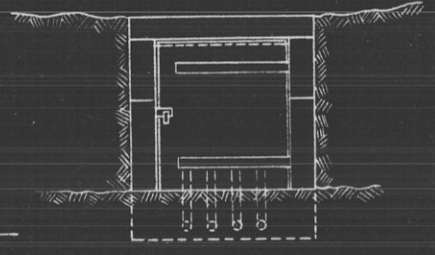


PLAN

SHELTER AND TERMINAL HUT
 SEARCHLIGHT NO.5
 FORT ROSECANS, CAL
 U.S. ENGINEER OFFICE, LOS ANGELES, CAL
 Scale $\frac{1}{48}$ and $\frac{1}{144}$



FRONT ELEVATION
 SHELTER



FRONT ELEVATION
 TERMINAL HUT

REPORT OF COMPLETED WORKS - SEACOAST FORTIFICATIONS.
(Searchlights)

COAST DEFENSES OF SAN DIEGO, CALIF.
FORT ROSECRANS.
SEARCHLIGHT NO. ~~FIVE~~ No. 18**

Form 4.

Corrected to JUN 14 1921

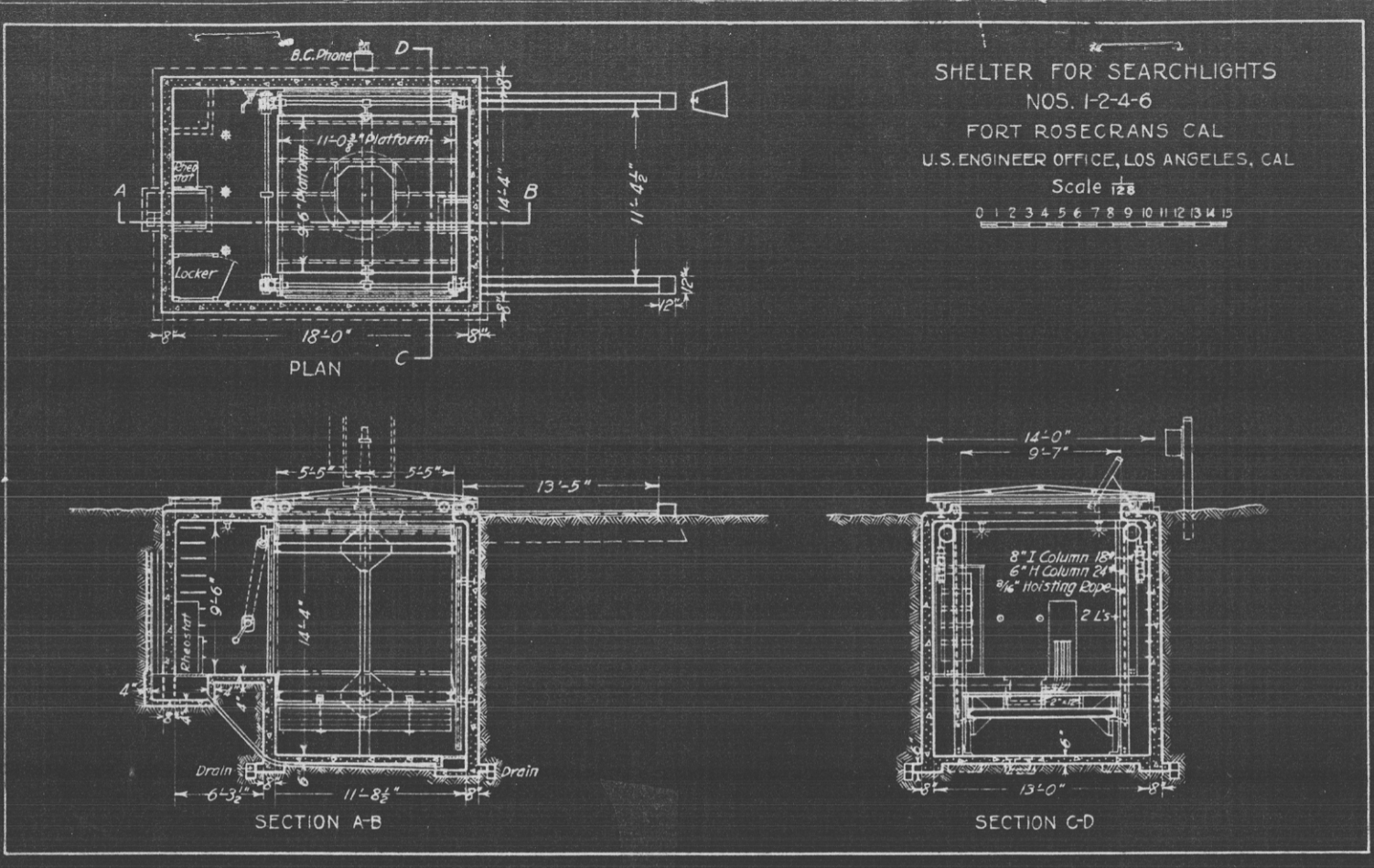
Size SIXTY-INCH Portable or fixed PORTABLE ON FIXED TRACK.

<u>PROJECTOR</u>		<u>INSTALLATION</u>	
Location.....	S.56°16' E.976 ft.from Old Spanish Lighthouse.	General character.....	Mounted on push car.
Manufacturer.....	General Electric Company.	Date structure transferred to troops.....	JUN 14 1921
Type of projector.....	Type E.C.Form N, 150 amp.	Cost to that date.....	
Serial No.of projector...	7791.	Materials of construction	Concrete and steel.
Type of lamp.....	Automatic Type H, Form D. *	Interior dimensions, day shelter.....	12' x 16' x 13' height.
Serial No.of lamp.....	144, Model 4.	Height and type of tower..	No tower.
Electric or hand control.	Both.	Means by which projector is placed in operating position.....	Pushed on car to operating position.
Material of mirror.....	Glass.	Reference axis of projector in operating position.	214.6 ft. (M.L.L.W.Datum)
Date purchased.....	Unknown.	Kind of protection in operating position.....	None.
From whom purchased.....	Unknown.	Concealment of day shelter from approach channel....	Set in side of hill, not visible from field of fire.
Date received in district	March 15, 1909.	Dates & cost of extensive remodeling or reconstruction.....	None.
From whom received.....	Fort Monroe, Va.		
Age of mirror.....	10 years.		
Condition of mirror.....	Good.		
Date last repaired.....	Unknown. Converted to Sperry in 1909.		
Switchboard serial No....	201703.		
<u>CABLES #</u>		<u>POWER PLANT</u>	
Power plant to switchboard		Location.....	S.55°15' E.840 ft.from Old Spanish Lighthouse.
Length and size.....	25' 4/0 R.L. cable.	Maximum demand kw.....	20-kw.
In conduits or in air..	Conduit. 1 duct, no manholes	Type and size.....	Type M.P.C.6-25-560 Form A, 25-kw.DC, gasoline electric.
Projector to switchboard.			
Length and size.....	340 ft.212,000 CM Type R.L.A.S.		
In conduit or in air...	Buried in earth.		
Controller to light.....			
Length and size.....	2266 ft.type C.L.A.S. 11 cond		
In conduit or in air...	Buried in earth.		
Aux. controller to light.			
Length and size.....	None.		
In conduit or in air...			
		<u>CONTROLLERS</u>	
		Location.....	In Second Fire Command Station.
		Type.....	G.E.Form N.
		Serial No.....	5881.
		How protected or concealed.....	In concrete shelter.

If in conduit state No. of ducts and manholes. If trenched, state whether cable has armor.

* See 470.31A - 2302, 12/13/38
Type of lamp - converted Sperry

**470.3(San Diego)CM 53580



SHELTER FOR SEARCHLIGHTS

NOS. 1-2-4-6

FORT ROSECRANS CAL

U.S. ENGINEER OFFICE, LOS ANGELES, CAL

Scale 1/28

0 1 2 3 4 5 6 7 8 9 10 11 12 13 14 15

REPORT OF COMPLETED WORKS - SEACOAST FORTIFICATIONS.
(Searchlights)

COAST DEFENSES OF SAN DIEGO, CALIF.
FORT ROSECRANS.

SEARCHLIGHT NO. ~~FOUR~~ No. 17 **

Form 4.

Corrected to JUN 14 1921

Size SIXTY-INCH Portable or fixed FIXED Portable.

(5) 2

PROJECTOR

Location..... S.12°04' E.1971.5 ft. from Old Spanish Lighthouse.
 Manufacturer..... General Electric Company.
 Type of projector..... E.C. Form N. 150 amp. N-10 *
 Serial No. of projector... 21764.
 Type of lamp..... Automatic Type H, Form D.
 Serial No. of lamp..... Not received.
 Electric or hand control. Both.
 Material of mirror..... Glass.
 Date purchased..... Unknown.
 From whom purchased..... General Electric Company.
 Date received in district June 5, 1920.
 From whom received..... General Elect. Co. (A.T. & S.F. Ry)
 Age of mirror..... New.
 Condition of mirror..... Good.
 Date last repaired..... Not repaired.
 Switchboard serial No.... 201202.

INSTALLATION

General character.....
 Date structure transferred to troops.....
 Cost to that date.....
 Materials of construction.
 Interior dimensions, day shelter.....
 Height and type of tower..
 Means by which projector is placed in operating position.....
 Reference axis of projector or in operating position..
 Kind of protection in operating position.....
 Concealment of day shelter from approach channel
 Dates & cost of extensive remodeling or reconstruction.....

Projector on counter-balanced lift in buried shelter.
 JUN 14 1921
 Concrete and steel.
 13' x 18' x 14'6" height.
 No tower.
 Counter-balanced elevating device
 309.9 ft. (M.L.L.W. Datum)
 None.
 Buried.
 None.

CABLES #

Power plant to switchboard
 Length and size..... 20 ft. 4/0 R.L. Cable.
 In conduits or in air.. In conduits. 1 duct; no manholes
 Projector to switchboard.
 Length and size..... 540 ft. 212,000 CM Type R.L.A.S.
 In conduit or in air... Buried in earth.
 Controller to light.....
 Length and size..... 605 ft. type C.L.A.S. 11 cond.
 In conduit or in air... Buried in earth.
 Aux. controller to light.
 Length and size..... None.
 In conduit or in air...

POWER PLANT

Location.....
 Maximum demand kw.....
 Type and size.....

2114' S. of old Spanish Lighthouse
 20-kw.
 25-hp. DC gasoline electric type MPC. 6-25-560, Form G.

CONTROLLERS

Location.....
 Type.....
 Serial No.....
 How protected or concealed.....

In Fort Commander's Station.
 Form N. 12.
 400367.
 In concrete shelter with steel roof.

If in conduit state No. of ducts and manholes. If trenched, state whether cable has armor.

* See 470.31A - 2302, 12/13/38:

Form of projector N-10

** 470.3 (San Diego) CM 53580

SHELTER FOR SEARCHLIGHTS

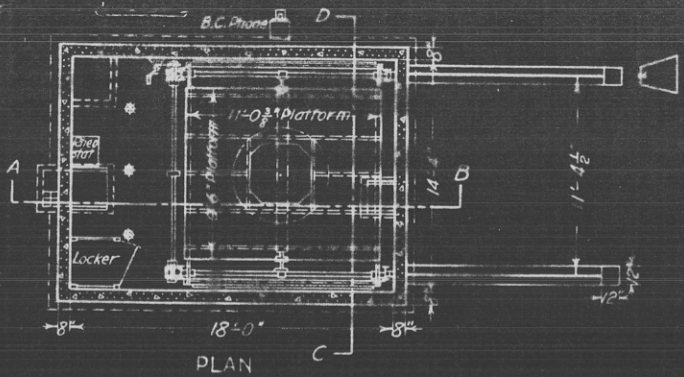
NOS. 1-2-4-6

FORT ROSECRANS CAL

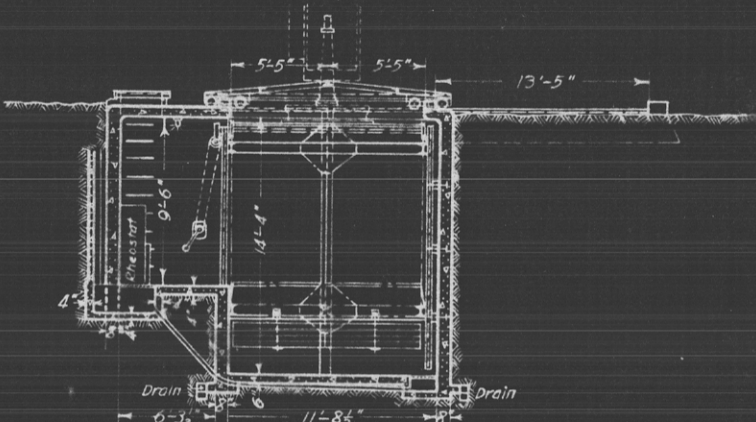
U.S. ENGINEER OFFICE, LOS ANGELES, CAL

Scale $\frac{1}{2}$ " = 1'-0"

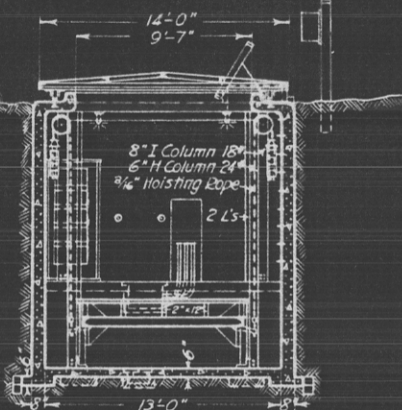
0 1 2 3 4 5 6 7 8 9 10 11 12 13 14 15



PLAN



SECTION A-B



SECTION C-D

REPORT OF COMPLETED WORKS - SEACOAST FORTIFICATIONS
(Searchlights)

COAST DEFENSES OF SAN DIEGO, CALIF.
FORT ROSECRANS.

SEARCHLIGHT NO. ~~SIX.~~ No. 19**

Form 4.

Corrected to JUN 14 1921

Size SIXTY-INCH Portable or fixed ~~FIXED~~*

<p><u>PROJECTOR</u> Location..... N.70°37' E.945 ft. from Old Spanish Lighthouse.</p> <p>Manufacturer..... General Electric Company. Type of projector..... Type E.C. Form N, 150 amp. Serial No. of projector... 7792. Type of lamp..... Automatic, Type H, Form D. * Serial No. of lamp..... 139. Electric or hand control. Both. Material of mirror..... Glass. Date purchased..... Unknown. From whom purchased..... Unknown. Date received in district Unknown. From whom received..... Unknown. Age of mirror..... Unknown. Condition of mirror..... Badly spotted, needs resilvering. Date last repaired..... Converted from G.E. Burner to Sperry in 1917. Switchboard serial No.... 200503.</p>		<p><u>INSTALLATION</u> General character..... Projector on counter-balanced lift in buried shelter.</p> <p>Date structure transferred to troops..... JUN 14 1921 Cost to that date..... Materials of construction.. Concrete and steel. Interior dimensions, day shelter..... 13' x 18' x 14' 4" height. Height and type of tower.. No tower. Means by which projector is placed in operating position..... Counter-balanced elevating device. Reference axis of projector in operating position. 223.7 ft. (M.L.L.W. Datum) Kind of protection in operating position..... None. Concealment of day shelter from approach channel.... Buried. Dates & cost of extensive remodeling or reconstruction..... None.</p>	
<p><u>CABLES #</u> Power plant to switchboard Length and size..... 20 ft. 4/0 R.L. cable. Conduits or in air.. Conduit. 1 duct, no manholes</p> <p>Projector to switchboard. Length and size..... 410 ft. 212,000 CM Type R.L.A.S. In conduit or in air... Buried in earth.</p> <p>Controller to light..... Length and size..... 2296 ft. Type C.L.A.S. 11 condr. In conduit or in air... Buried in earth.</p> <p>Aux. controller to light. Length and size..... None. In conduit or in air...</p>		<p><u>POWER PLANT</u> Location..... S.55°15' E.840 ft. from Old Spanish Lighthouse. Maximum demand kw..... 20-kw. Type and size..... Type M.P.C.6-25-560 Form A, 25-kw. D.C. gasoline electric</p>	
		<p><u>CONTROLLERS</u> Location..... In Second Fire Command Station. Type..... G.E. Form N. Serial No..... 5882. How protected or concealed..... In concrete shelter.</p>	

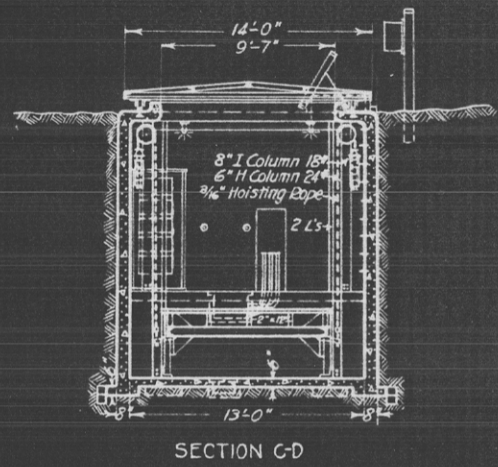
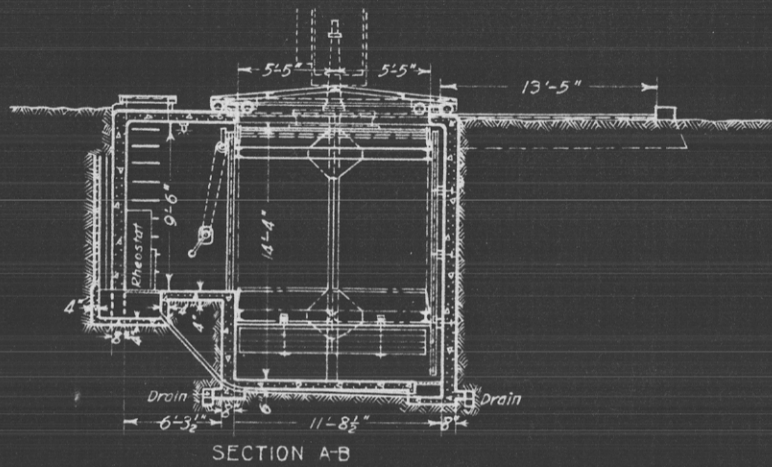
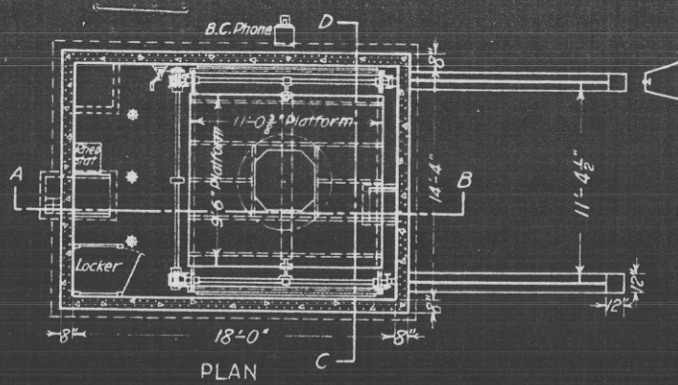
If in conduit state No. of ducts and manholes. If trenched, state whether cable has armor.

* See 470.31 A - 2302, 12/13/39
Type of lamp - converted Sperry

** 470.3 (San Diego) CM 53580

* To be replaced with portable S/L. See 470.31 (San Diego) CM 109917

SHELTER FOR SEARCHLIGHTS
 NOS. 1-2-4-6
 FORT ROSECRANS CAL
 U.S. ENGINEER OFFICE, LOS ANGELES, CAL
 Scale $\frac{1}{28}$
 0 1 2 3 4 5 6 7 8 9 10 11 12 13 14 15



REPORT OF COMPLETED WORKS - SEACOAST FORTIFICATIONS.
(Searchlights)

COAST DEFENSES OF SAN DIEGO, CALIF.
FORT ROSECRANS.
SEARCHLIGHT NO. ~~ONE~~ No. 11**

Form 4.

Corrected to JUN 14 1921

Size 60-INCH Portable or fixed FIXED **

<p><u>PROJECTOR</u> Location..... N.67°25' W.1300 ft.from Gun 1, Pit A,Battery Whistler.Co-ord. 16657.4S - 20625.8W. Manufacturer..... General Electric Co. Type of projector..... E.C.Form N, 150 Amp. - N-10 * Serial No.of projector... 21740 Type of lamp..... Automatic Type H,Form D. Serial No. of lamp..... Not received. Electric or hand control. Both. Material of mirror..... Glass. Date purchased..... Unknown. From whom purchased..... General Electric Co. Date received in district May 25, 1920. From whom received..... Gen.Elect.Co. (A.T.& S.F.Ry.) Age of mirror..... New. Condition of mirror..... Good. Date last repaired..... Not repaired. Switchboard serial No.... 200480.</p>		<p><u>INSTALLATION</u> General character..... Projector on counter-balanced lift in buried shelter. Date structure transferred to troops..... JUN 14 1921 Cost to that date..... Materials of construction. Concrete and steel. Interior dimensions, day shelter..... 13 ft.x 18 ft.x 14.ft.4 in.height Height and type of tower.. No tower. Means by which projector is placed in operating position..... Counter-balanced elevating de- vice. Reference axis of project- or in operating position 221.6 ft. (M.L.L.W. datum) Kind of protection in operating position..... None. Concealment of day shelter from approach channel Buried. Dates & cost of extensive remodeling or reconstruc- tion..... None.</p>	
<p><u>CABLES #</u> Power plant to switchboard Length and size..... 15' 4/0 R.C. cable. In conduits or in air.. Conduit. 1 duct; no manholes Projector to switchboard Length and size..... 408' 212,000 CM Type R.L.A.S. In conduit or in air... Buried in earth. Controller to light..... Length and size..... 2113' type C.L.A.S., 11 Cond. In conduit or in air... Buried in earth. Aux. controller to light. None. Length and size..... In conduit or in air...</p>		<p><u>POWER PLANT</u> Location..... Co-ord.16988.1S, 20740.3W Maximum demand kw..... 20 KW. Type and size..... 25-kw. D.C.gasoline electric, Type M.P.C. 6-25-560, Form G.</p>	
		<p><u>CONTROLLERS</u> Location..... In First Fire Command Sta. Type..... Form N-12. Serial No..... 400365 How protected or con- cealed..... In concrete shelter with steel roof.</p>	

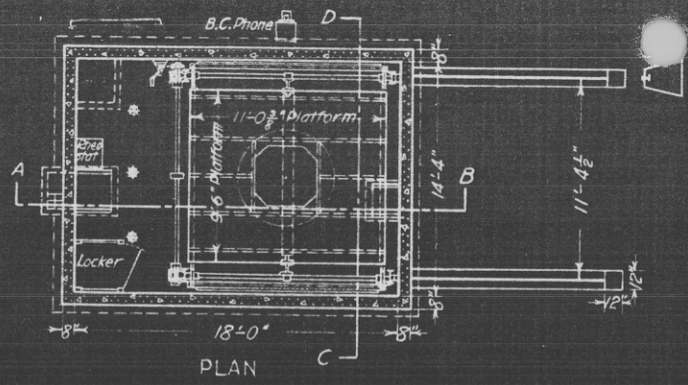
If in conduit state No. of ducts and manholes. If trenched, state whether cable has armor.

* See 470.31 A - 2302, 12/13/38
Form of Projector N-10

** Fixed Light to be replaced w/portable.
See 470.3 (San Diego) CM 109917

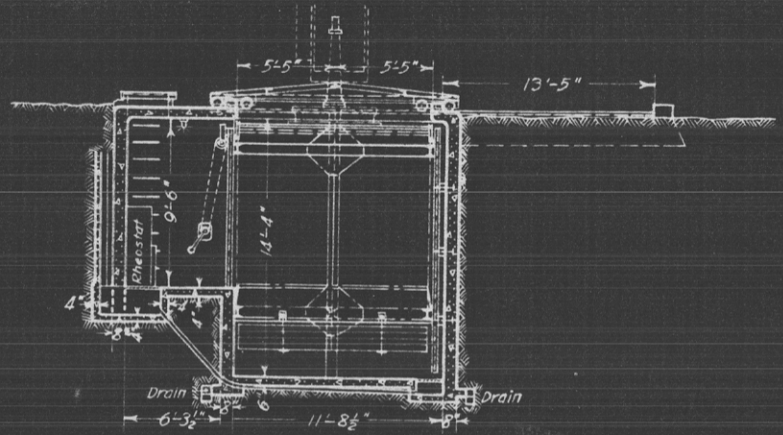
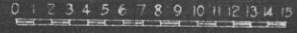
** 470.3 (San Diego) CM 53580

BWS 10/20/44

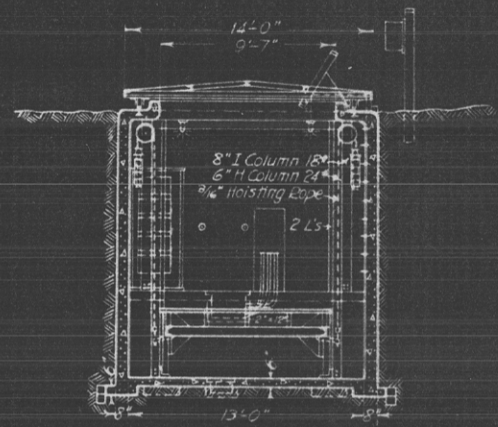


PLAN

SHELTER FOR SEARCHLIGHTS
 NOS. 1-2-4-6
 FORT ROSECRANS, CAL.
 U.S. ENGINEER OFFICE, LOS ANGELES, CAL.
 Scale 1/8"



SECTION A-B



SECTION C-D

REPORT OF COMPLETED WORKS - SEACOAST FORTIFICATIONS.
(Searchlights)

COAST DEFENSES OF SAN DIEGO, CALIF.
FORT ROSECRANS.
SEARCHLIGHT NO. ~~TWO~~ No. 12 **

Form 4.

Corrected to JUN 14 1921

Size 60-INCH Portable or fixed FIXED **

<p><u>PROJECTOR</u> Location..... Manufacturer..... Type of projector..... Serial No. of projector... Type of lamp..... Serial No. of lamp..... Electric or hand control. Material of mirror..... Date purchased..... From whom purchased..... Date received in district From whom received..... Age of mirror..... Condition of mirror..... Date last repaired..... Switchboard serial No....</p>	<p>N.74°37' W.1700 ft. from Gun 1, Pit A, Battery Whistler. Co- ord. 16838.4S 20966.2 W. General Electric Company. E.C. Form N. 150 Amp. - N-10 * 21756. Automatic Type H, Form D. Not received. Both. Glass. Unknown. General Electric Co. May 25, 1920. Gen. Elect. Co. (A.T. & S.F. Ry.) New. Good. Not repaired. 201200</p>	<p><u>INSTALLATION</u> General character..... Date structure transferred to troops..... Cost to that date..... Materials of construction. Interior dimensions, day shelter..... Height and type of tower.. Means by which projector is placed in operating position..... Reference axis of project- or in operating position Kind of protection in operating position..... Concealment of day shelter from approach channel Dates & cost of extensive remodeling or reconstruc- tion.....</p>	<p>Projector on counter-balanced lift in buried shelter. JUN 14 1921 Concrete and steel. 13 ft. x 18 ft. x 14 ft. 4 in. height No tower. Counter-balanced elevating device. 115.9 (M.L.L.W. Datum) None. Buried. None.</p>
<p><u>CABLES #</u> Power plant to switchboard Length and size..... In conduits or in air.. Projector to switchboard Length and size..... In conduit or in air... Controller to light..... Length and size..... In conduit or in air... Aux. controller to light. Length and size..... In conduit or in air...</p>	<p>15 ft. 4/0 R.L. cable. Conduit. 1 duct; no manholes 570' 212,000 CM. Type R.L.A.S. Buried in earth. 1890 ft. Type C.L.A.S. 11 condr. Buried in earth. None.</p>	<p><u>POWER PLANT</u> Location..... Maximum demand kw..... Type and size.....</p>	<p>Co-ord. 16988.1S, 20740.3W 20-kw. 25-kw. D.C. gasoline electric Type M.P.C. 6-25-560, Form G.</p>
	<p><u>CONTROLLERS</u> Location..... Type..... Serial No..... How protected or con- cealed.....</p>	<p>In First Fire Command Station. Form N 12. 400371. In concrete shelter with steel roof.</p>	

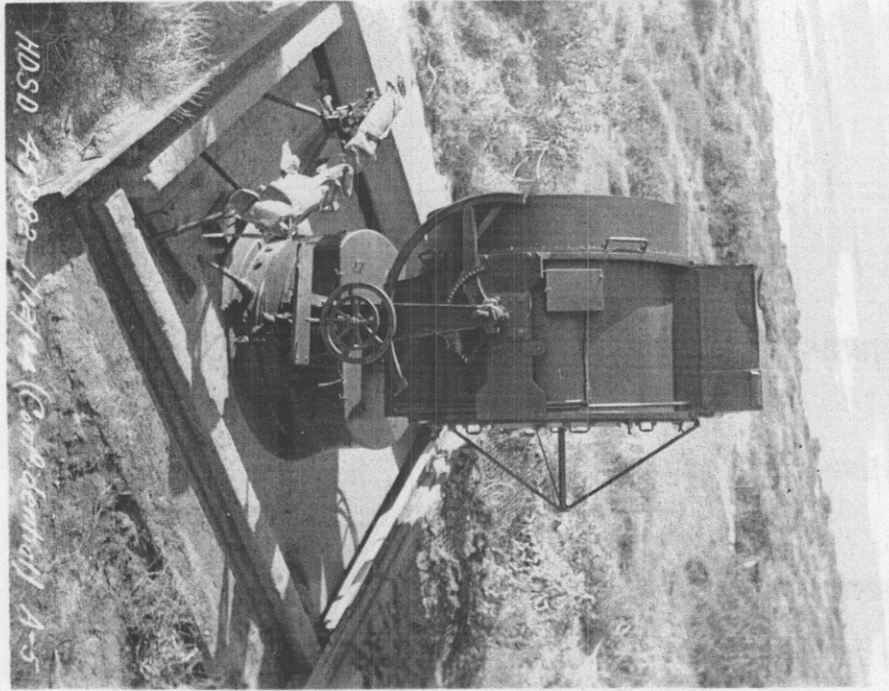
If in conduit state No. of ducts and manholes. If trenched, state whether cable has armor.

* See 470.31 A-2302, 12/13/38:
Form of projector N-10

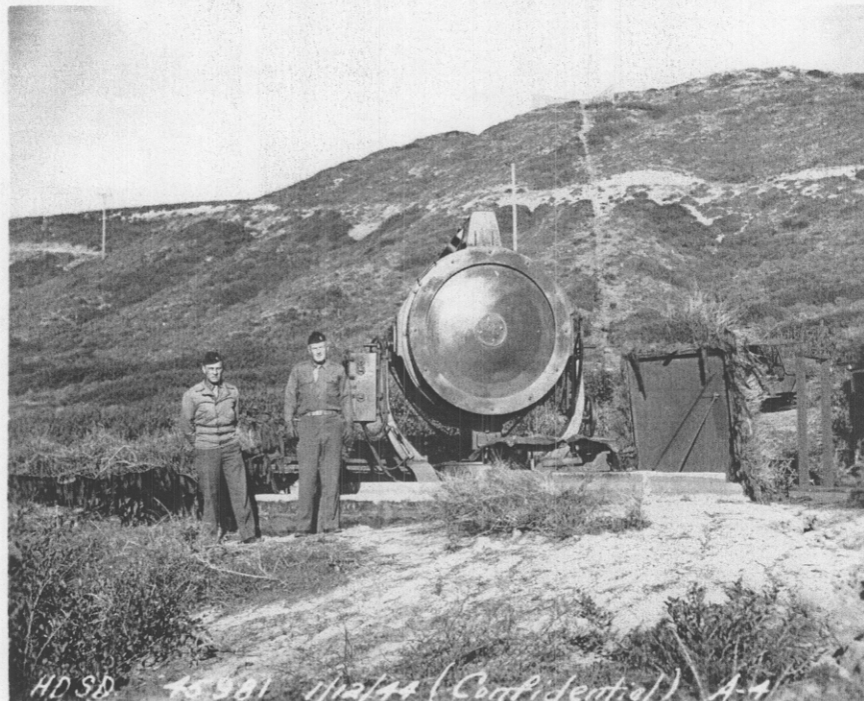
** Fixed S/L to be replaced w/ portable S/L
See 470.3 (San Diego) CM 109917 BA 10/20/40

** 470.3 (San Diego) CM 53580

H. D. S. D.
FIXED S.C.S.L. NO. 15
OPERATING POSITION-FRONT VIEW

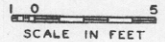


H. D. S. D.
FIXED S.C.S.L. NO. 15
OPERATING POSITION-REAR VIEW



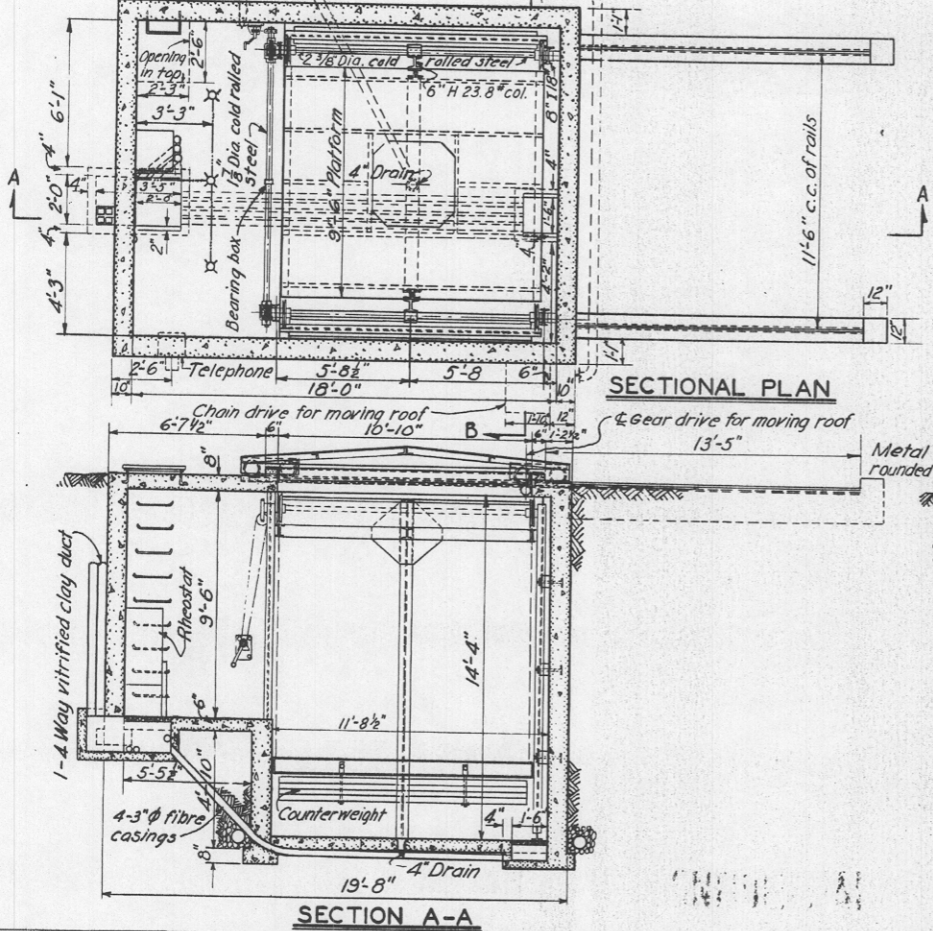
SEARCHLIGHT SHELTER NO. 15

U.S. ENGINEER OFFICE, LOS ANGELES, CALIF.

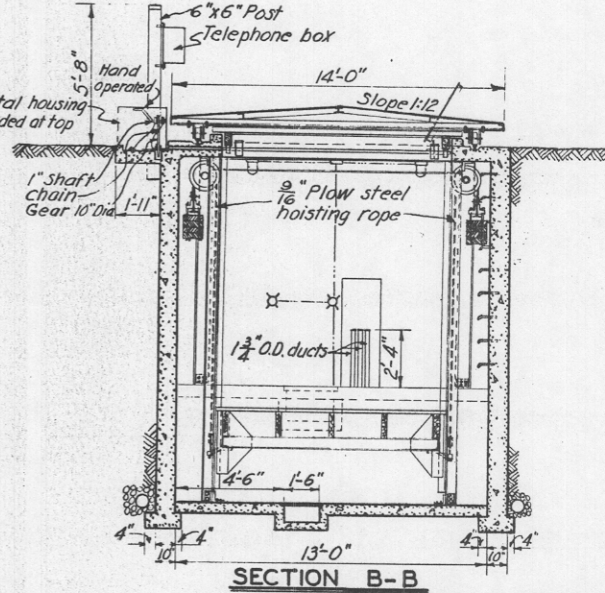


SCALE IN FEET

~~CONFIDENTIAL~~



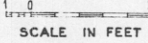
SECTIONAL PLAN



SECTION B-B

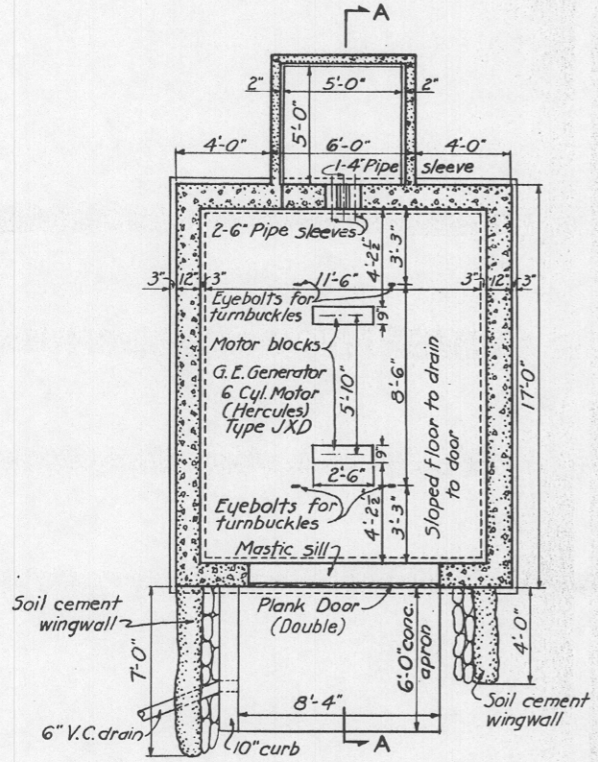
POWER PLANT SHELTER FOR SEARCHLIGHT NO. 15

U.S. ENGINEER OFFICE, LOS ANGELES, CALIF.

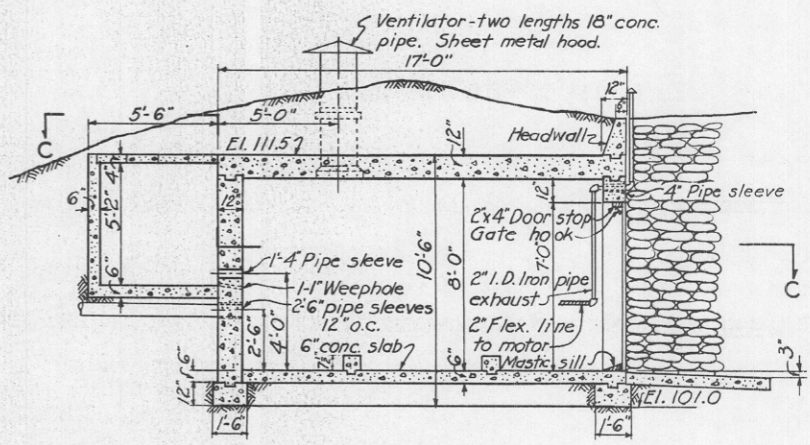


SCALE IN FEET

~~CONFIDENTIAL~~



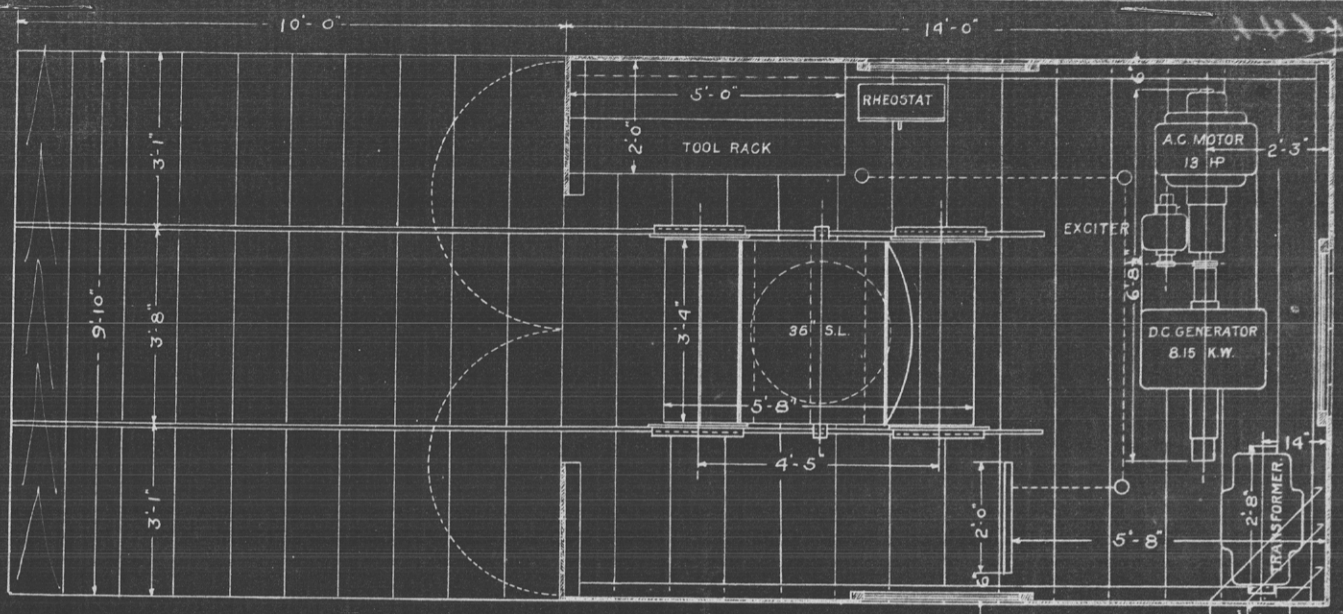
SECTIONAL PLAN C-C



SECTION A A

WAR DEPARTMENT

CORPS OF ENGINEERS U.S. ARMY

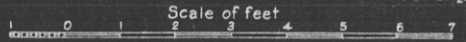


117-2001
198

Note:
Power from Central Power Plant.

36 IN. SEARCHLIGHT
BILLY GOAT POINT,
FORT ROSECRANS, CAL.

In 1 sheet Scale of feet Scale 1/24



U. S. Engineer Office Los Angeles, Cal. May 19, 1917.
Submitted:

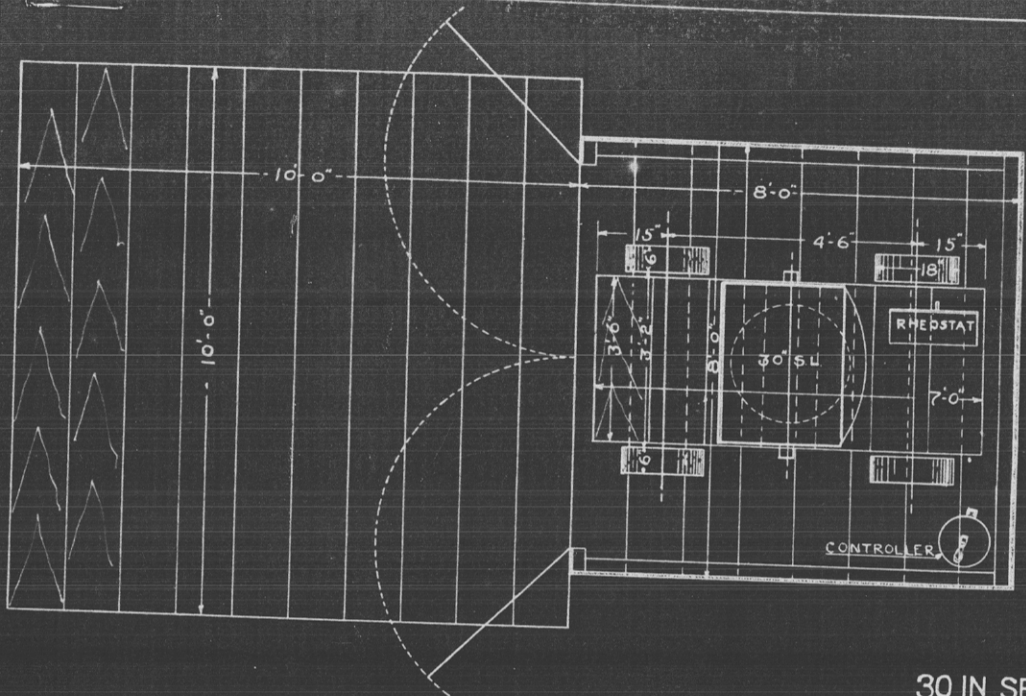
Chas. T. Ludo
Capt. U.S. Army, Retired.

Drawn by F.C.D. File No. 8-22-5A Transmitted with letter dated May 28, 1917.

WAR DEPARTMENT

CORPS OF ENGINEERS U.S. ARMY.

103501
APP



Note:
Power from Battery Calef Sub-station.

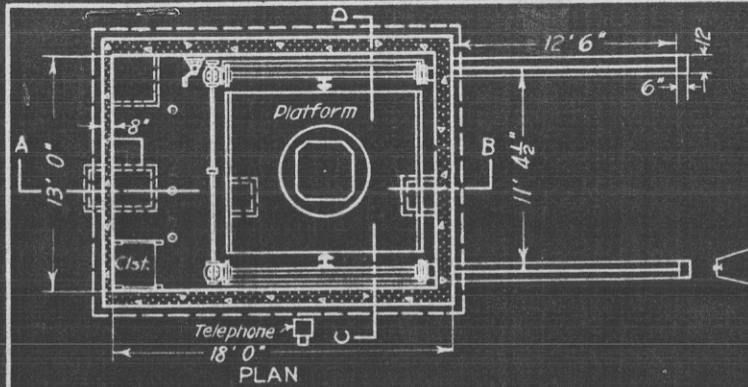
30 IN. SEARCHLIGHT
 RIGHT FLANK BATTERY Mc GRATH
 FORT ROSECRANS, CAL.

In 1 sheet
 Scale of feet
 0 1 2 3 4 5 6 7
 Scale $\frac{1}{4}$

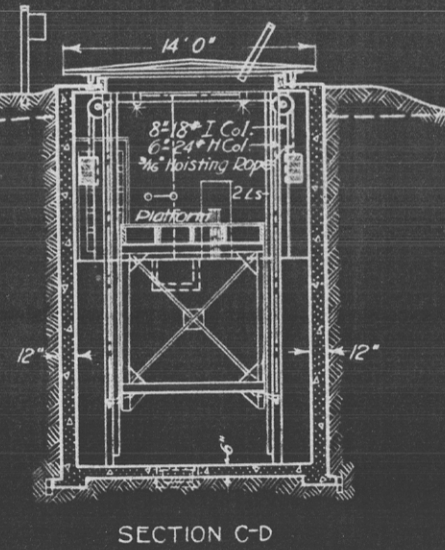
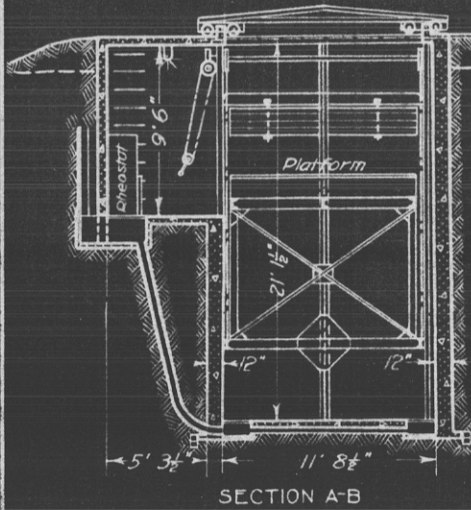
U. S. Engineer Office Los Angeles Cal. May 19, 1917.

Submitted:
Chas. T. Leeds
 Capt. U. S. Army, Retired.

Drawn by F.C.D. File No. 8-22-7A. Transmitted with letter dated May 28, 1917.



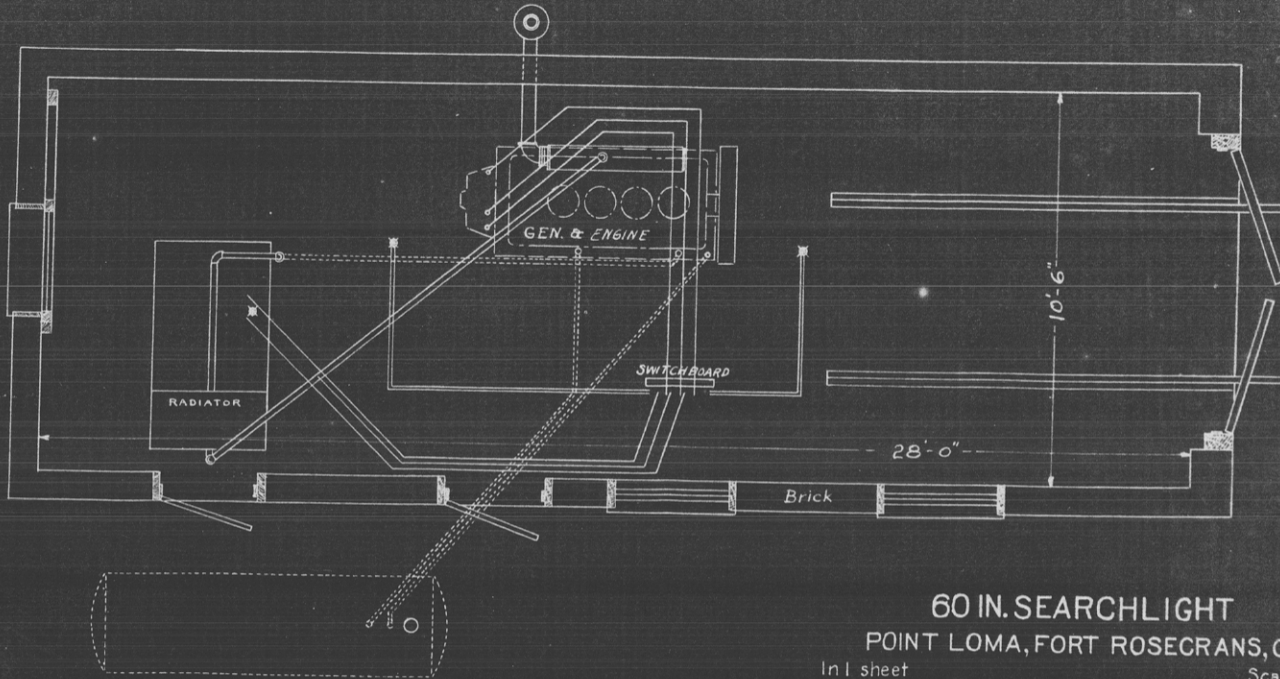
SHELTER FOR SEARCHLIGHTS
 NOS. 7 & 8
 FORT ROSECRANS, CAL.
 U.S. ENGINEER OFFICE, LOS ANGELES, CAL.
 Scale $\frac{1}{128}$
 0 1 2 3 4 5 6 7 8 9 10 11 12 13 14 15



WAR DEPARTMENT

CORPS OF ENGINEERS U.S. ARMY.

10441
298



60 IN. SEARCHLIGHT
POINT LOMA, FORT ROSECRANS, CAL.

In 1 sheet

Scale $\frac{1}{32}$

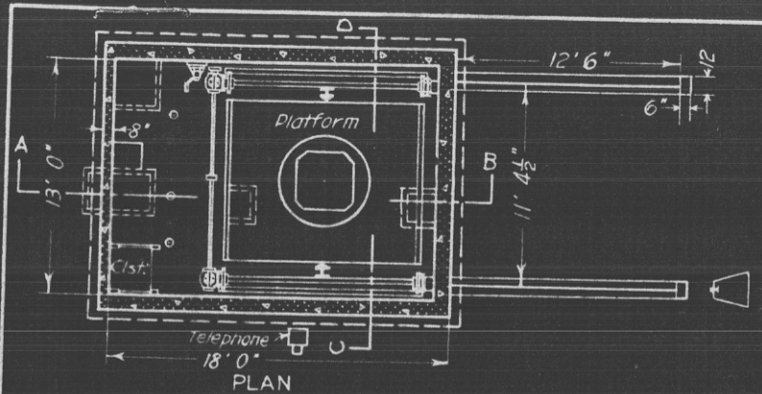
Scale of feet.

U. S. Engineer Office Los Angeles, Cal. May 19, 1917
Submitted.

Chas. T. Leeds

Capt. U. S. Army, Retired.

Drawn by F.C.D. File No. 8-22-64. Transmitted with letter dated May 28, 1917.



SHELTER FOR SEARCHLIGHTS
 NOS. 7 & 8
 FORT ROSECRANS, CAL.
 U.S. ENGINEER OFFICE, LOS ANGELES, CAL.
 Scale $\frac{1}{128}$
 0 1 2 3 4 5 6 7 8 9 10 11 12 13 14 15

