

CONFIDENTIAL

SPEKM-1

600.914 (Los Ang) 92682
REPORT OF COMPLETED WORKS - SEACOAST FORTIFICATIONS
(Batteries)

SEACOAST DEFENSES OF VENTURA, CALIFORNIA
H.Q., SOUTHERN CALIFORNIA SECTOR, W.D.C.
BATTERY - - - No. of guns 2
Caliber 155 MM Carriages MOBILE

Part I

92682

Corrected to 4 May 1944

GENERAL:

Battery commenced: January 1943
Battery completed: July 1943
Date of transfer: 18 April 1944
Cost to date of transfer: \$9,990.25
Materials of construction: Reinforced concrete
Battery new or modernized: New

Runnion elevation in battery: Mobile Mounts
Datum plane: Mean Lower Low Water

UTILITIES:

WATER SUPPLY

Source of: None installed (see remarks)
Alternate source: None installed (see remarks)
Size of main: None installed (see remarks)

SEWER:

Connected to sewer: No
Type of disposal: None
Type of latrine: None

"
"

" UTILITIES: (Contd.)

" ELECTRIC POWER

" Sources of: Commercial
" Procured & installed by: Post Engineer
" Characteristics: Voltage -- Phase --
" Number of units and capacity: None installed
" Max. K.W. required for utilities: --
" Max. K.W. required for nonbattle conditions: --
" Commercial power provided: --
" Auxiliary power unit provided: No
" Type of lighting fixtures: None
" Dehumidifying unit: None
" Rooms wet or dry: None constructed
" How ventilated: Not required
" How heated: Not required

" DATA TRANSMISSION:

" Type: Field telephone
"

" REMARKS:

" Engineer construction consists of two emplacements only;
" including protective concealment measures.
" Plane Coordinates: Lambert Projection, - Zone 5, California.

Emplacement Number	Cal.	Length	Model	Guns		Manufacturer	Mounted	Type	Model	Carriages		Motor
				Serial No.						Serial No.	Manufacturer	
1	"	"	"	"	"	"	"	"	"	"	"	"
2	"	"	"	"	"	"	"	"	"	"	"	"

Mobile - Mounted by Coast Artillery

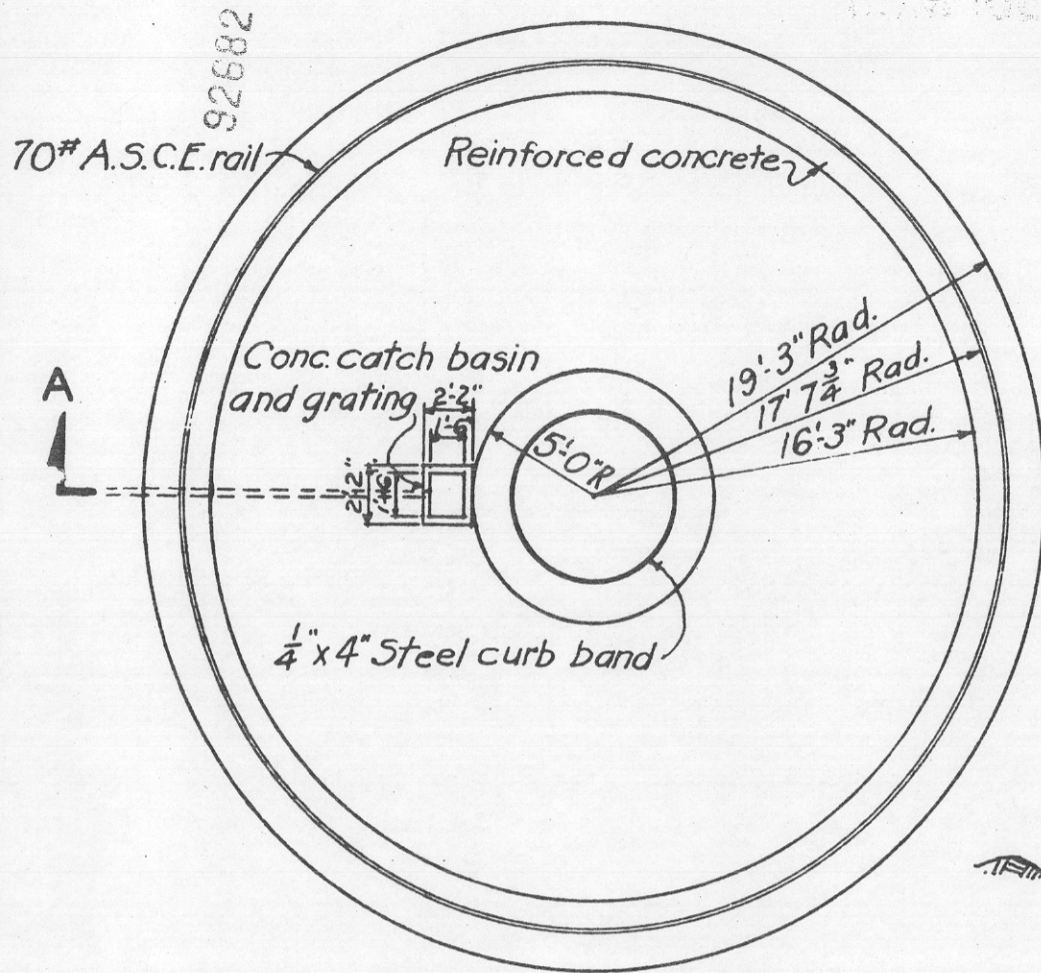
Permy Cards 11, 19 #64

CONFIDENTIAL

Ind 3'

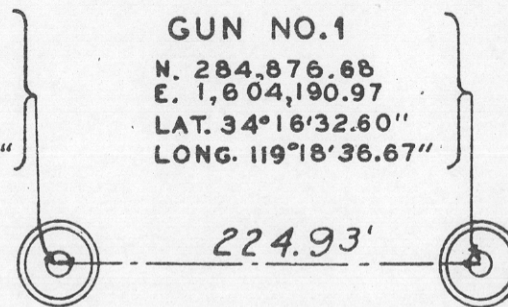
VENTURA PANAMA MOUNTS

U.S. ENGINEER OFFICE, LOS ANGELES, CALIF

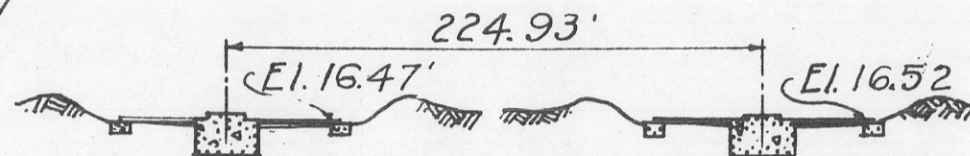


GUN NO. 2
 N. 284,749.09
 E. 1,604,376.21
 LAT. 34°16'31.36"
 LONG. 119°18'34.44"

GUN NO. 1
 N. 284,876.68
 E. 1,604,190.97
 LAT. 34°16'32.60"
 LONG. 119°18'36.67"



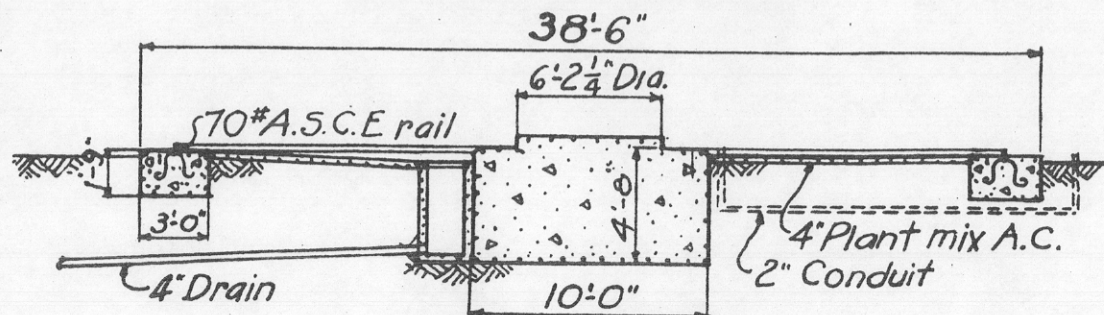
PLAN



GUN NO. 2

GUN NO. 1

PLAN OF PLATFORM



SECTION A-A

SCALE: 1/8" = 1'-0"